



FEA Reference Model Mapping Quick Guide (FY10 Budget Preparation)

August 2008

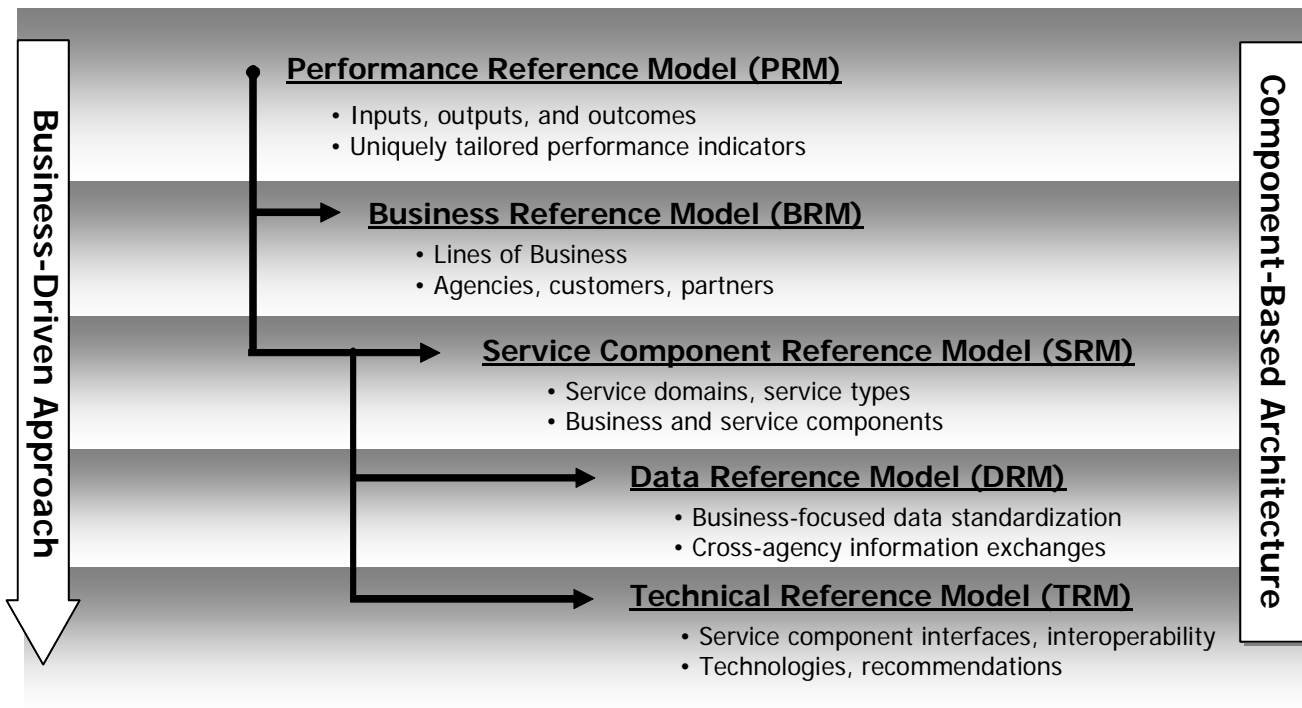


Federal Enterprise Architecture FY10 Reference Model Mapping Quick Guide

Overview

The Federal Enterprise Architecture Framework equips OMB and Federal agencies with a common language and framework to describe and analyze investments, enhance collaboration and ultimately transform the Federal government.

The FEA consists of a set of interrelated “reference models” designed to facilitate cross-agency analysis and the identification of duplicative investments, gaps and opportunities for collaboration within and across agencies. Collectively, the reference models comprise a framework for describing important elements of federal agency operations in a common and consistent way. Through the use of this common framework and vocabulary, agency investments can be better managed and leveraged across the federal government.



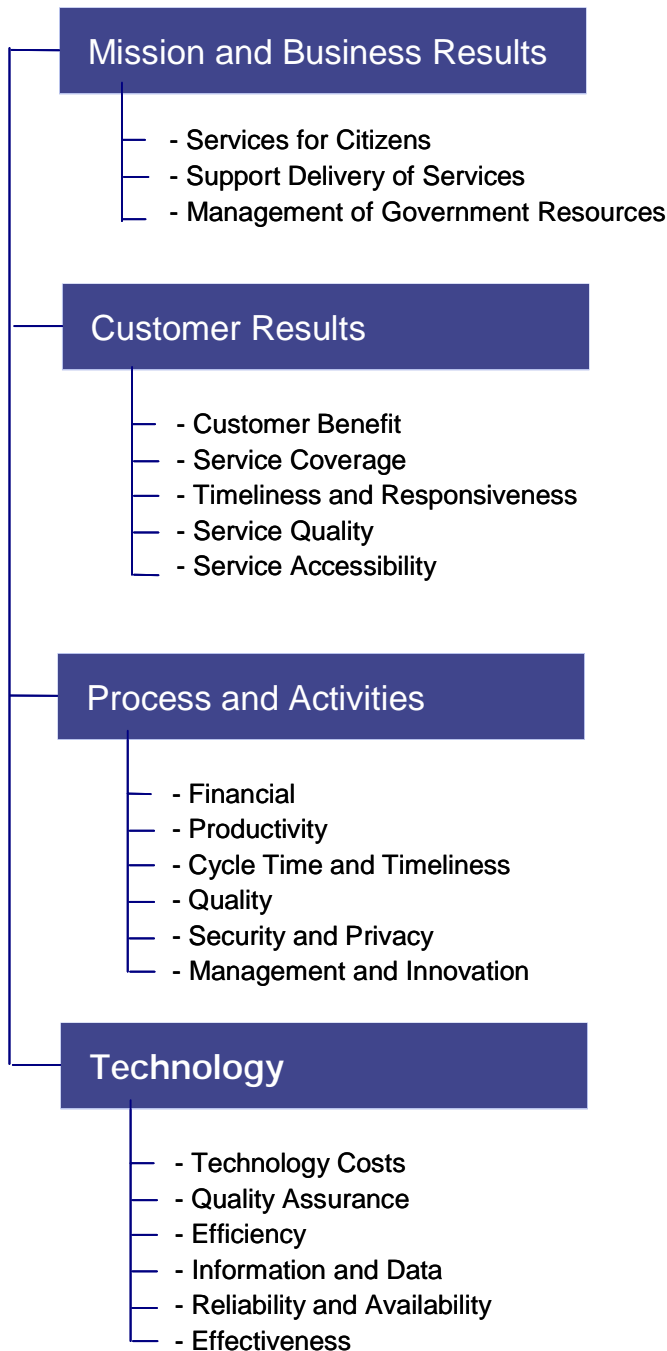
Purpose

The purpose of this guide is to help agencies map their investments to the FEA reference Models, especially for completing the Exhibit 53 and Exhibit 300 in OMB Circular A-11, for the FY10 budget year.

PRM – Measurement Groupings and Indicators

The PRM provides a common language enabling an agency EA to link investments to the agency’s ability to achieve agency and program performance objectives.

PRM Measurement Areas and Categories



The PRM is structured around Measurement Areas, Measurement Categories, Measurement Groupings, and Measurement Indicators.

Measurement Areas – The high-level organizing framework of the PRM capturing aspects of performance at the output levels. This layer is directly linked to the performance objectives established at the agency and program levels. The PRM for FY10 includes four measurement areas: Mission and Business Results, Customer Results, Processes and Activities, and Technology.

Measurement Categories – Collections within each measurement area describing the attribute or characteristic to be measured.

Measurement Groupings – Further refinement of categories into specific types of measurement indicators. For the Mission and Business Results Measurement Area, these groupings align to the Sub-functions of the BRM.

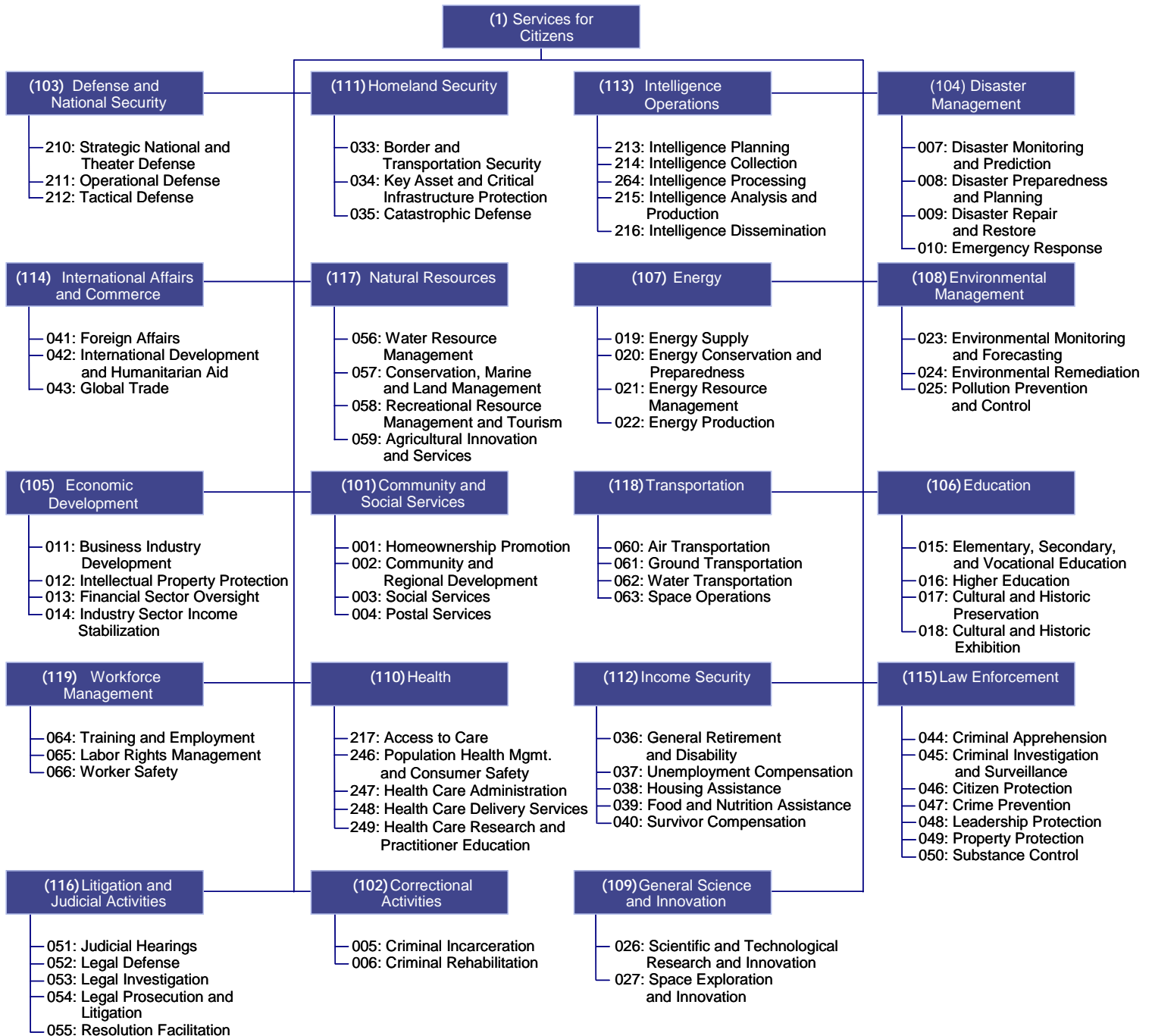
Measurement Indicators – The specific measures, e.g., number and/or percentage of customers satisfied, tailored for a specific BRM Line of Business or Sub-function, agency, program, or IT initiative.

BRM - Lines of Business and Sub-Functions

The BRM provides a framework facilitating a functional (not organizational) view of the federal government’s lines of business (LoB’s). Following are graphical representations of the BRM by Business Area, with corresponding numeric codes, to help agencies identify BRM mappings to complete the Primary FEA Mapping column of the Exhibit 53 (OMB Circular A-11).

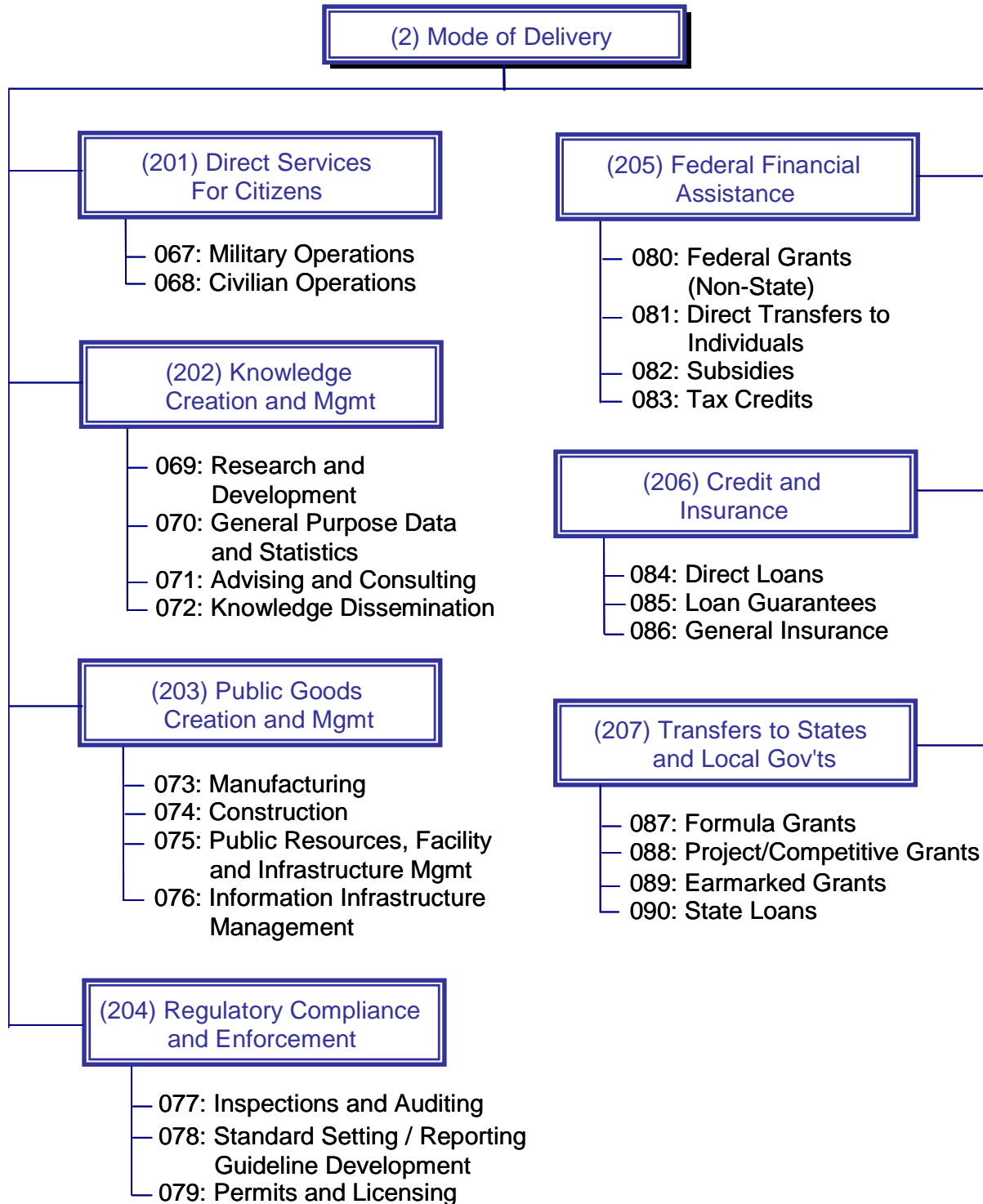
Services for Citizens

The Services for Citizens Business Area describes the mission and purpose of the federal government in terms of the services it provides both to, and on behalf of, the American citizen.



Mode of Delivery

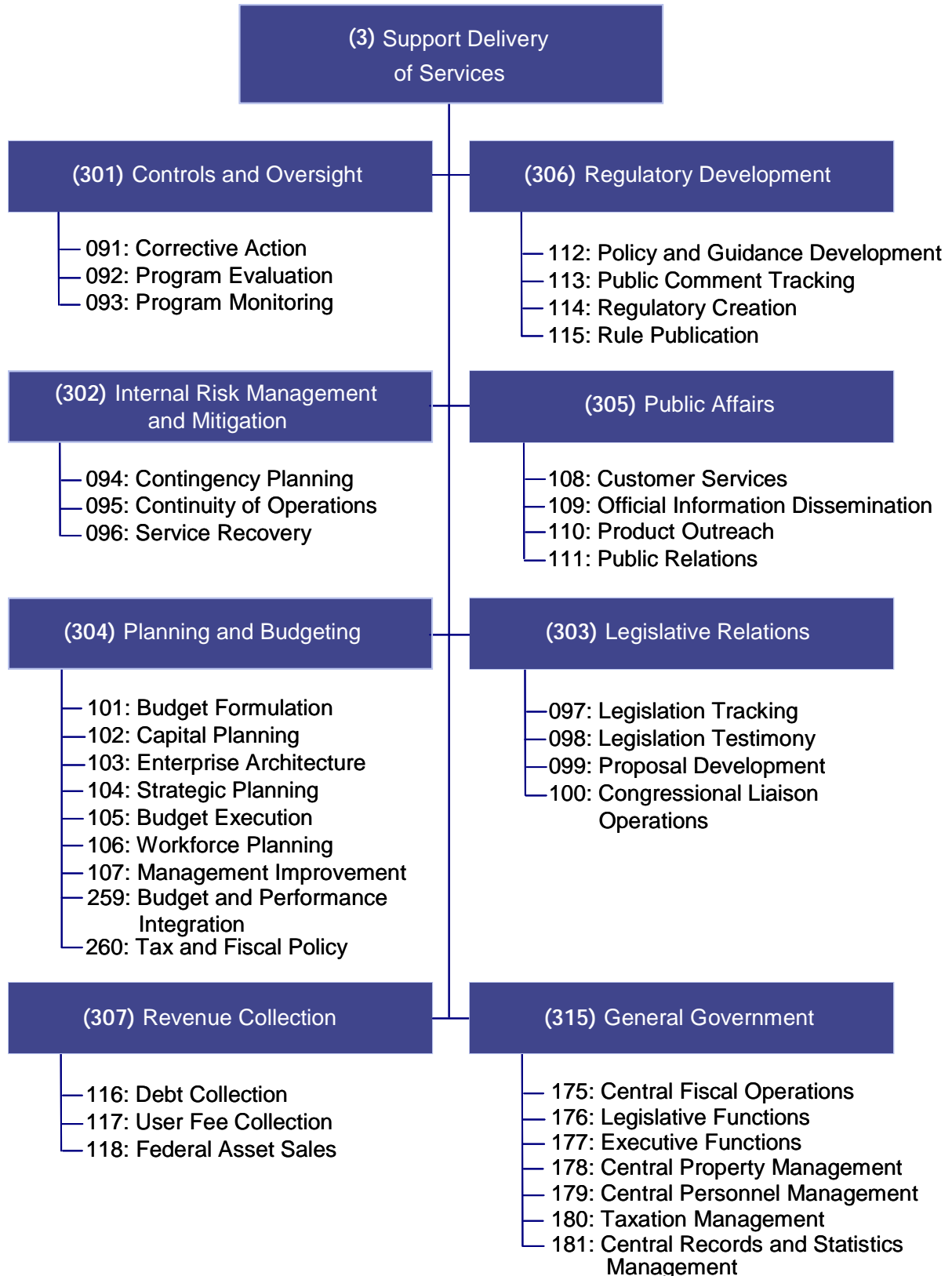
The Mode of Delivery Business Area represents the vehicle the federal government utilizes to deliver its Services to Citizens.



Note: "Mode of Delivery" LoBs and Sub-functions are not valid as a primary FEA mapping on the Exhibit 53.

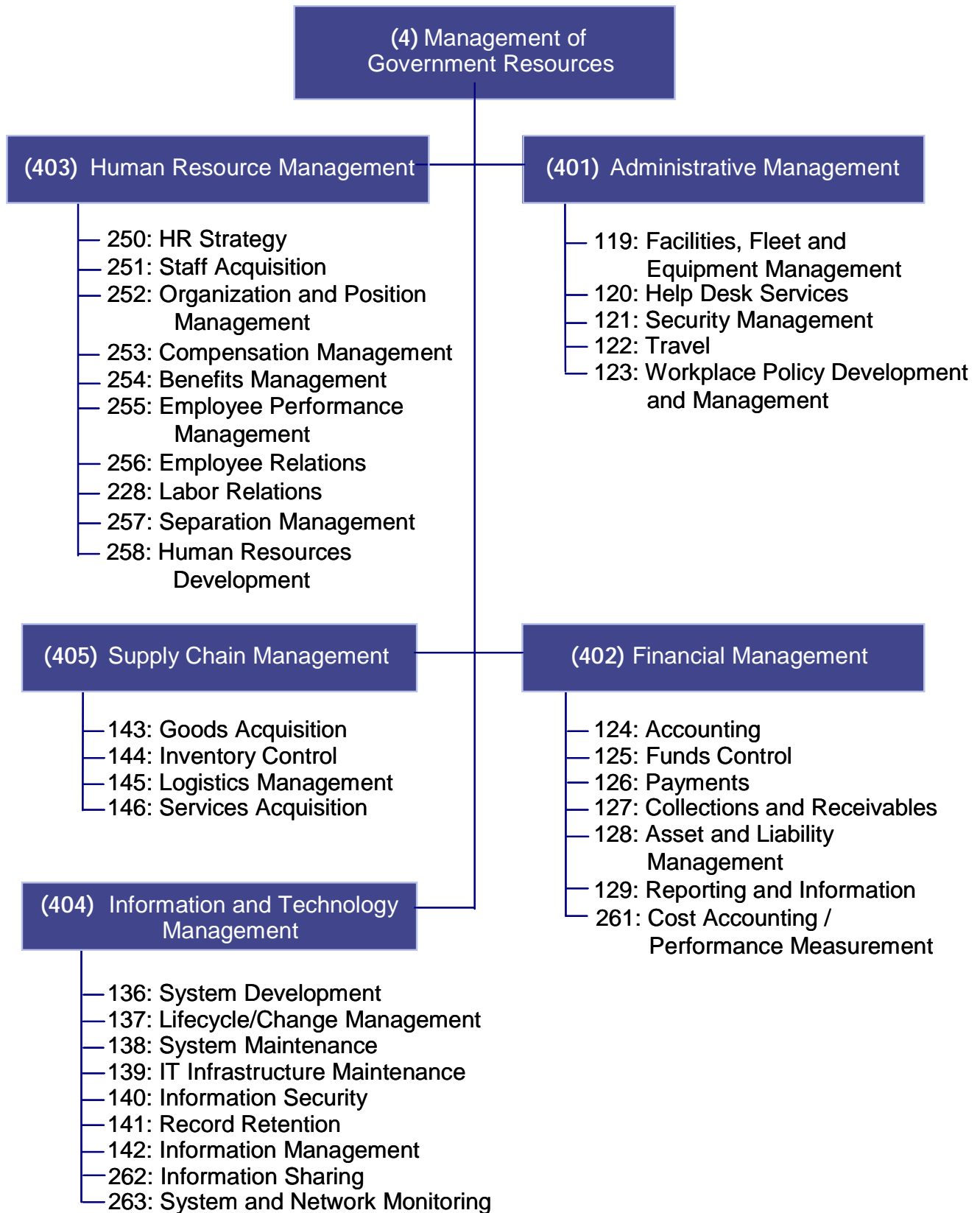
Support Delivery of Services

Support Delivery of Services Business Area provides the critical policy, programmatic and managerial foundation to support federal government operations.



Management of Government Resources

Management of Government Resources Business Area refers to the support activities enabling the government to operate effectively and efficiently.



SRM - Service Types and Components

The SRM provides a framework classifying Service Components according to the capabilities they provide to business functions. Following are graphical representations of the SRM by Service Domain to help agencies identify SRM mappings to complete the Primary FEA Mapping column of the Exhibit 53 (OMB Circular A-11) and the Enterprise Architecture section of the Exhibit 300.

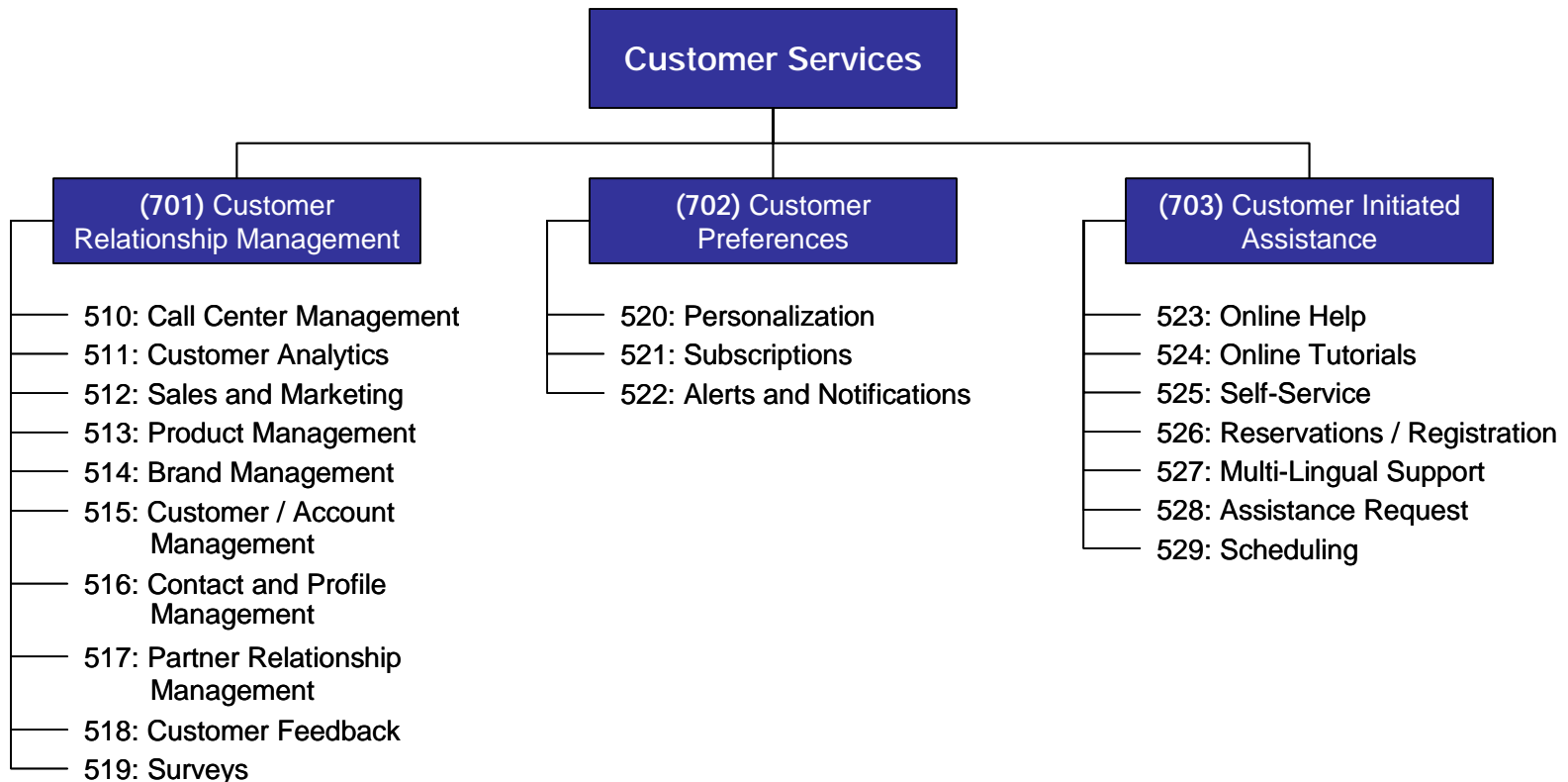
SRM Service Types and Service Components can be used as the primary FEA mapping for an investment on the Exhibit 53. This allows investments providing cross-cutting services for multiple Lines of Business or Sub-Functions to be able to reflect the service they provide versus alignment to a specific BRM Line of Business and Sub-function.

Agencies can use the following codes in the Service Component column to indicate if an investment provides multiple service components within a service type:

- 500 – Delivers all service components within the service type
- 501 – Delivers more than one service component within the service type.

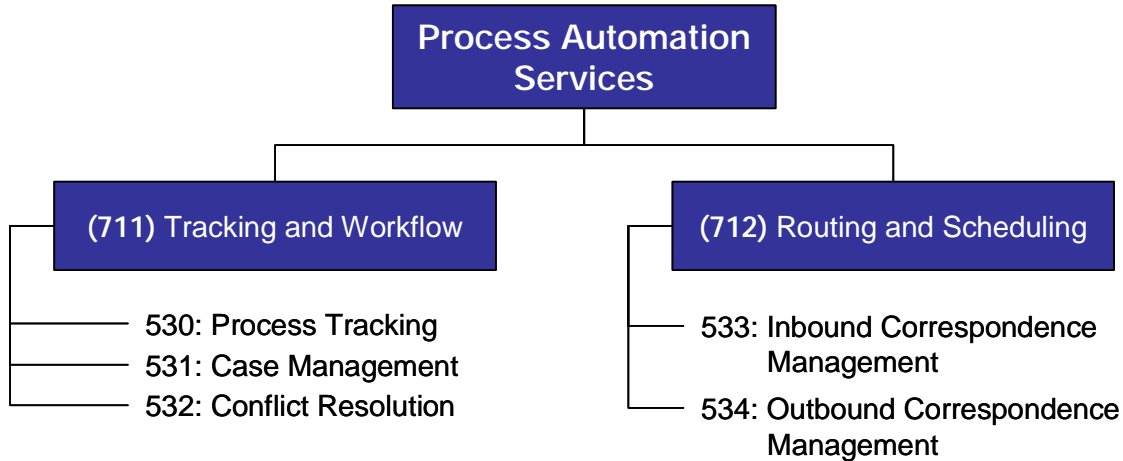
Customer Services

The Customer Services Domain defines the set of capabilities directly related to an internal or external customer, the business’s interaction with the customer, and the customer-driven activities or functions.



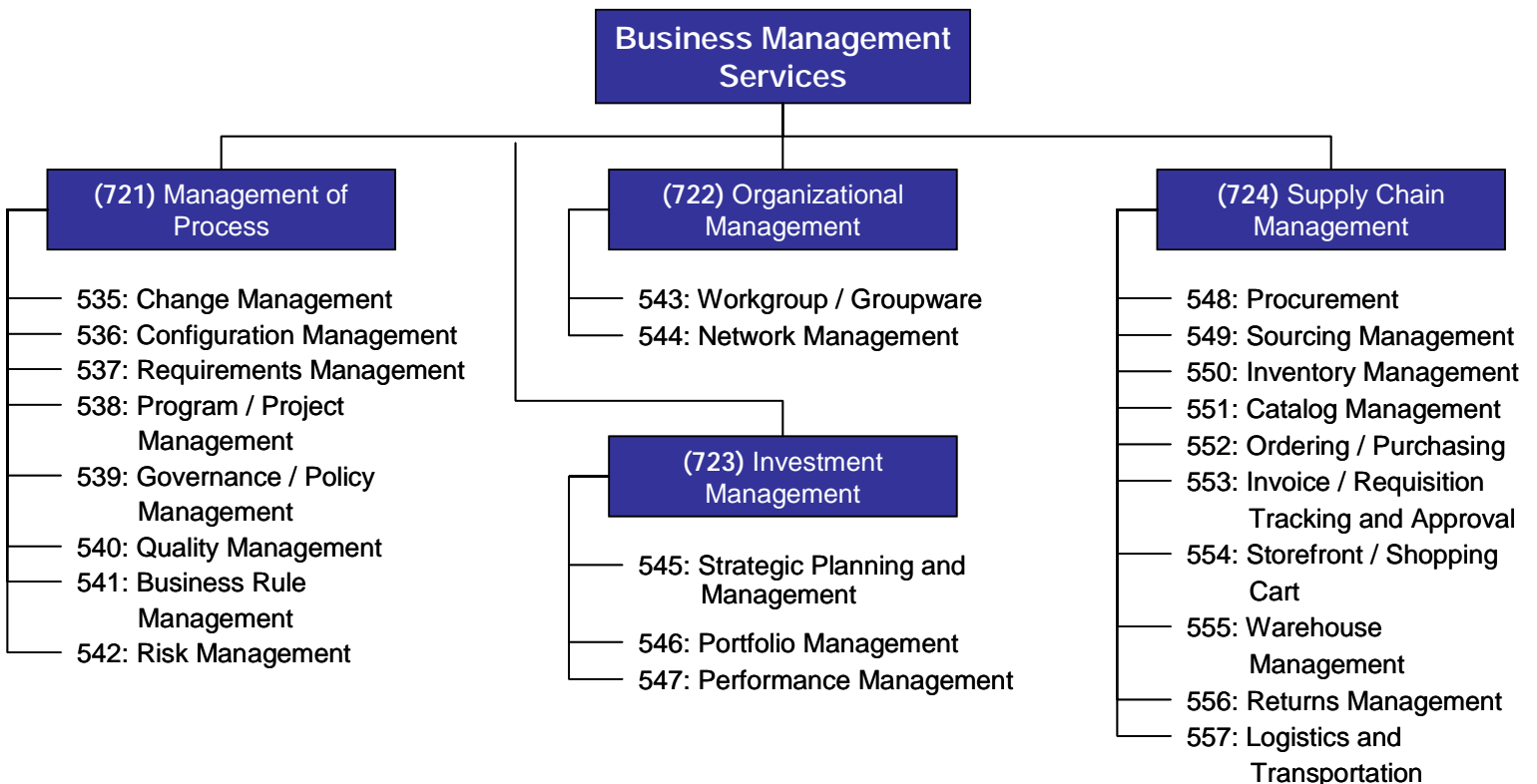
Process Automation Services

The Process Automation Services Domain defines the set of capabilities supporting the automation of process and management activities to assist in effectively managing the business.



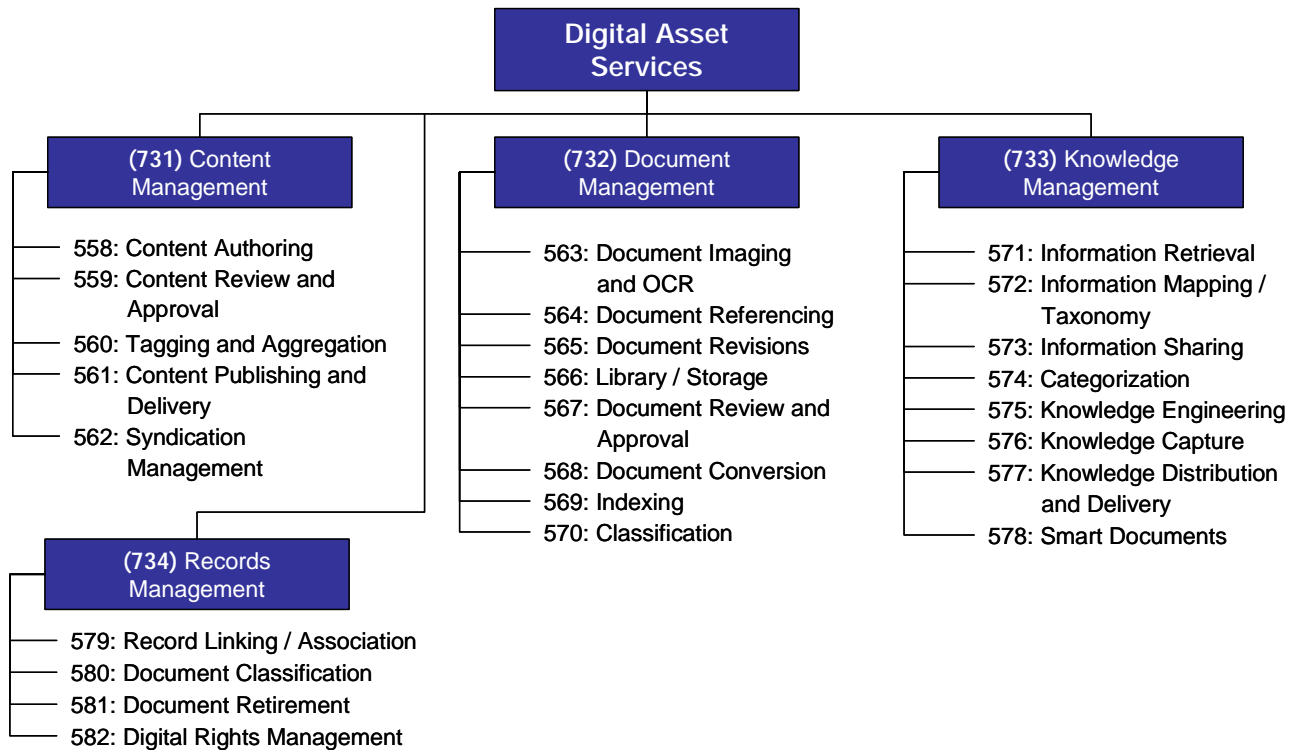
Business Management Services

The Business Management Services Domain represents those capabilities and services necessary for projects, programs and planning to be successfully managed within a business operation.



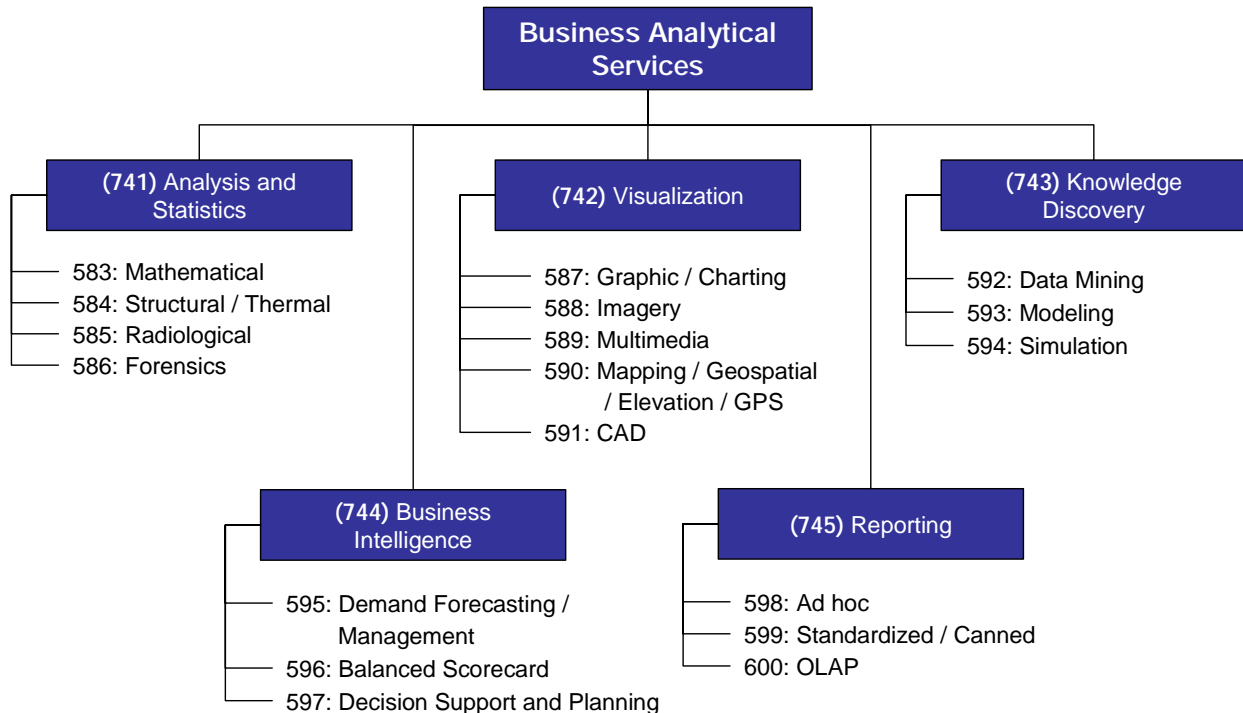
Digital Asset Services

The Digital Asset Services Domain defines the set of capabilities supporting the generation, management, and distribution of intellectual capital and electronic media across the business and extended enterprise.



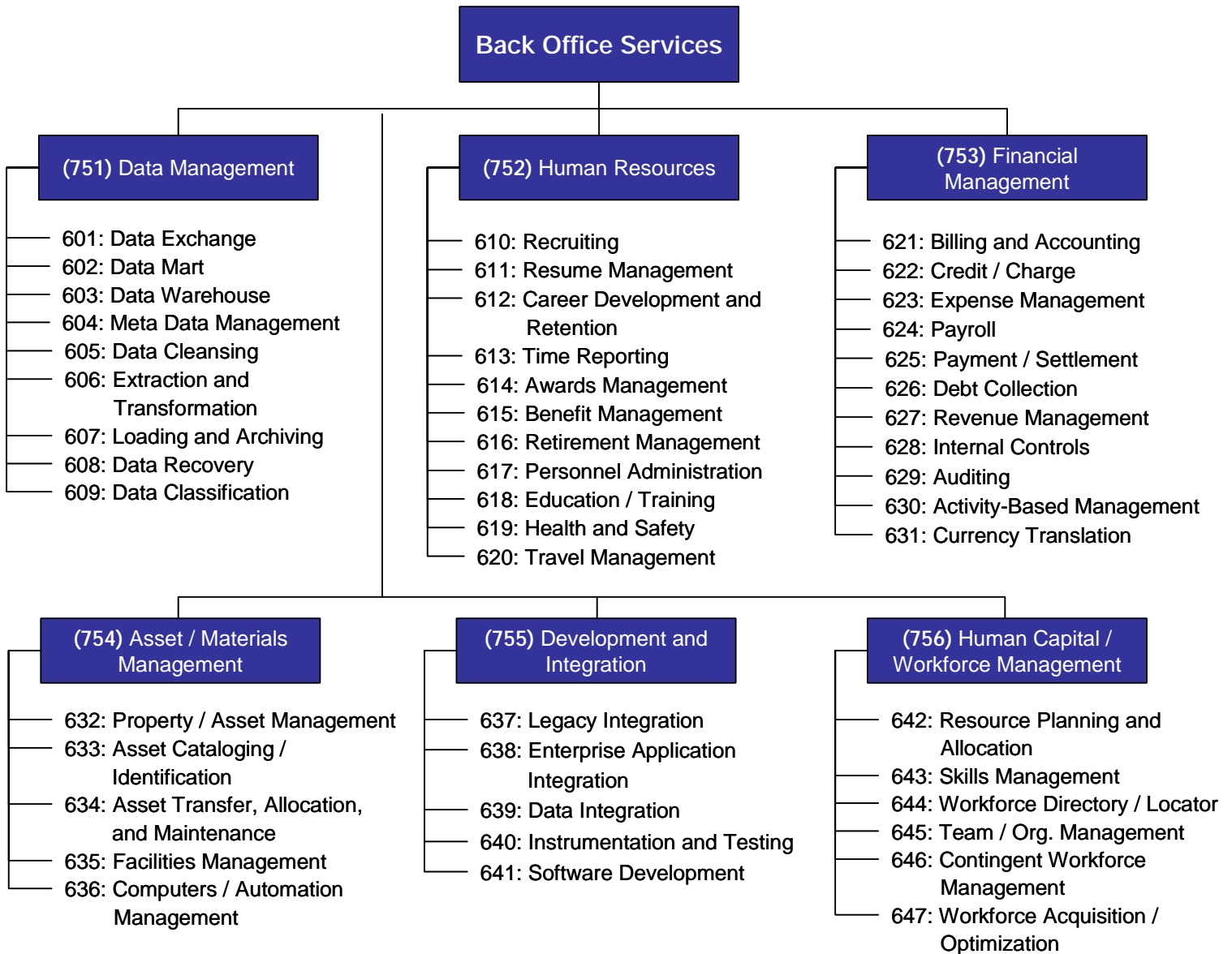
Business Analytical Services

The Business Analytical Services Domain defines the set of capabilities supporting the extraction, aggregation, and presentation of information to facilitate decision analysis and business evaluation.



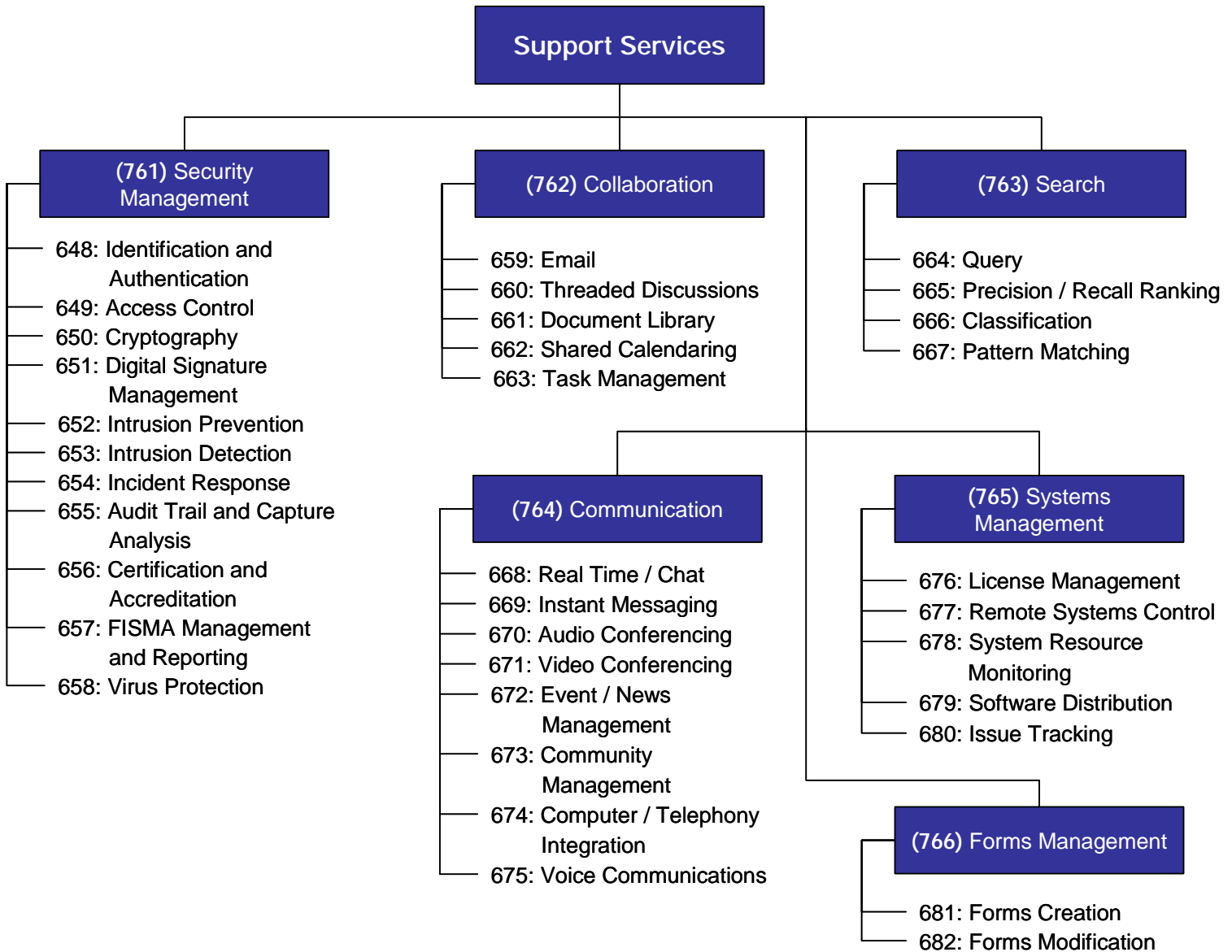
Back Office Services

The Back Office Services Domain defines the set of capabilities supporting the management of enterprise planning and transactional-based functions.



Support Services

The Support Services Domain defines the set of cross-functional capabilities able to be leveraged independent of Service Domain objective and/or mission.



TRM – Service Categories and Standards

The TRM provides a framework to describe how standards and technologies support the secure delivery, exchange, and construction of Service Components.

To demonstrate how a major IT investment aligns with the FEA Technical Reference Model (TRM), list the Service Areas, Categories, and Standards supporting the IT investment. For more information on the TRM, go to www.egov.gov.

Service Access and Delivery			
Access Channels	Delivery Channels	Service Requirements	Service Transport
Web Browser	Internet	Legislative / Compliance	Supporting Network Services
Wireless / PDA	Intranet	Authentication / Single Sign-on	Service Transport
Collaboration / Communications	Extranet	Hosting	
Other Electronic Channels	Peer to Peer (P2P)		
	Virtual Private Network (VPN)		
Service Platform and Infrastructure			
Support Platforms	Delivery Servers	Hardware / Infrastructure	
Wireless / Mobile	Web Servers	Servers / Computers	
Independent Platform	Media Servers	Embedded Technology Devices	
Dependent Platform	Application Servers	Peripherals	
	Portal Servers	Wide Area Network (WAN)	
Software Engineering	Database / Storage	Local Area Network (LAN)	
Integrated Development Environment (IDE)	Database	Network Devices / Standards	
Software Configuration Management	Storage	Video Conferencing	
Test Management			
Modeling			
Component Framework			
Security	User Presentation / Interface	Business Logic	Data Management
Certificates / Digital Signatures	Static Display	Platform Independent Technologies	Database Connectivity
Supporting Security Services	Dynamic Server-Side Display	Platform Dependent Technologies	Reporting and Analysis
	Content Rendering		
	Wireless / Mobile / Voice	Data Interchange	
		Data Exchange	
Service Interface and Integration			
Integration	Interoperability	Interface	
Middleware	Data Format / Classification	Service Discovery	
Enterprise Application Integration	Data Types / Validation	Service Description / Interface	
	Data Transformation		

Note: In the TRM table in the Exhibit 300, agencies should indicate the SRM Service Components supported by the TRM Service Standards listed. Agencies should provide information on the vendor and product mapped to the Service Standard in the "Service Specification" field.

Additional Guidance

The purpose of this guide is to help agencies map their investments to the FEA Reference Models, especially for completing the Exhibit 53 and Exhibit 300 in OMB Circular A-11, for the FY10 budget year.

For Exhibit 53 Mappings:

- The primary mapping to the FEA reference models is no longer included as part of the UPI code; instead, it is captured in columns called “Primary FEA Mapping (BRM or SRM)” in the Exhibit 53.
- Agencies should map investments to the FEA BRM based on the function of the investments; *not* the function of the program or mission of the agency. If the investment provides a service supporting multiple business functions, agencies can map the investment to the SRM.
- Though an IT investment can have a number of valid mappings to the BRM or SRM, the primary mapping should be the line of business and sub-function (BRM) or the service type and service component (SRM) it most directly supports.
- If an investment provides multiple service components within a service type, agencies can use the following codes in the Service Component column:
 - (500) delivers all service components within the service type or
 - (501) delivers more than one service component within the service type.
- The BRM “Mode of Delivery” business area is not valid for primary FEA mappings.
- Agencies should not use the “Information and Technology Management” (404) and “Administrative Management” (401) mappings for investments supporting mission-specific functions. Investments should be mapped to the appropriate mission-specific line of business and sub-function of the BRM.

For Exhibit 300 Mappings:

- In the SRM table, if an agency service component is not represented by a Service Component in the FEA SRM, enter “NEW” in the “FEA SRM Component” field and provide a name and description in the “Agency Component Name” and “Agency Component Description” fields in the Exhibit 300.
- In the SRM table, the percentages in the “BY Funding Percentage” column can, but are not required to, add up to 100%. However, they should not add up to more than 100%.
- In the TRM table in the Exhibit 300, agencies should indicate the SRM Service Components supported by the TRM Service Standards listed. Agencies should provide information on the vendor and product mapped to the Service Standard in the “Service Specification” field.

For More Information:

- Agencies should refer to the updated FEA Reference Model documentation for FY10 located on www.egov.gov. These include:
 - Consolidated Reference Model (CRM) Version 2.3
 - CRM Version 2.3 Revisions Summary document
- For guidance on completing the Exhibit 300 and Exhibit 53 for the FY10 budget year, see OMB Circular A-11, available at http://www.whitehouse.gov/omb/circulars/a11/current_year/a11_toc.html.

Contact Information

For additional information please visit the FEA PMO website:

www.egov.gov

For any questions/comments, e-mail the Federal Enterprise Architecture Program
Management Office (FEA PMO) at:

fea@omb.eop.gov