



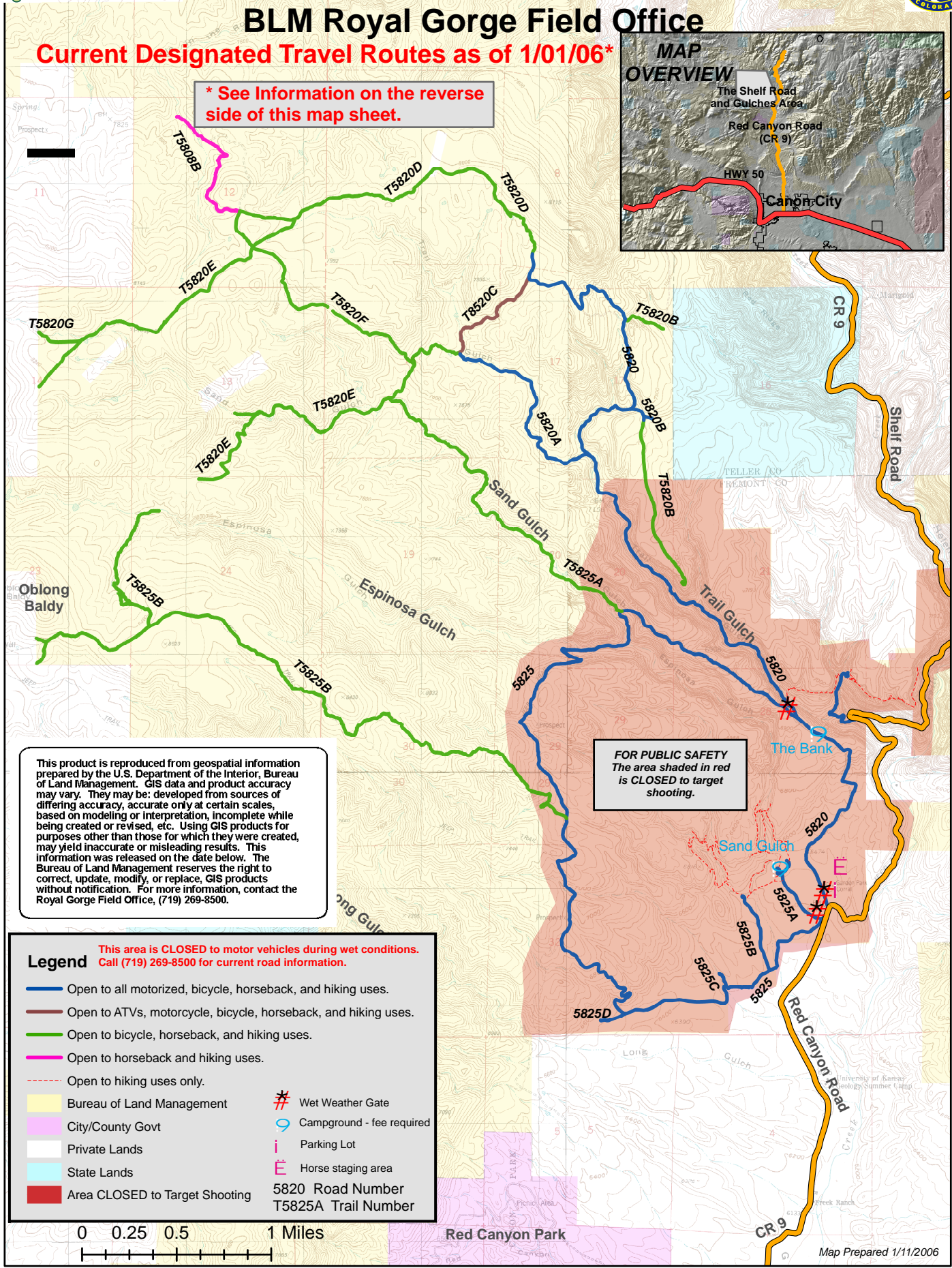
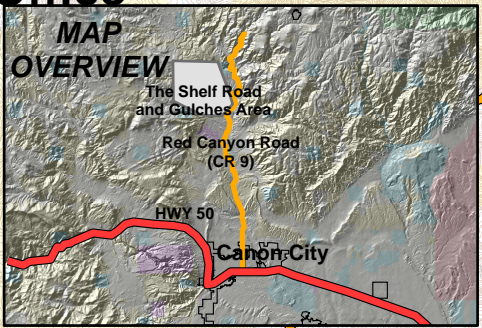
# The Shelf Road and Gulches Area Roads and Trails



## BLM Royal Gorge Field Office

Current Designated Travel Routes as of 1/01/06\*

\* See Information on the reverse side of this map sheet.

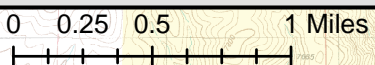


This product is reproduced from geospatial information prepared by the U.S. Department of the Interior, Bureau of Land Management. GIS data and product accuracy may vary. They may be: developed from sources of differing accuracy, accurate only at certain scales, based on modeling or interpretation, incomplete while being created or revised, etc. Using GIS products for purposes other than those for which they were created, may yield inaccurate or misleading results. This information was released on the date below. The Bureau of Land Management reserves the right to correct, update, modify, or replace, GIS products without notification. For more information, contact the Royal Gorge Field Office, (719) 269-8500.

FOR PUBLIC SAFETY  
The area shaded in red is CLOSED to target shooting.

**Legend** This area is CLOSED to motor vehicles during wet conditions. Call (719) 269-8500 for current road information.

- Open to all motorized, bicycle, horseback, and hiking uses.
- Open to ATVs, motorcycle, bicycle, horseback, and hiking uses.
- Open to bicycle, horseback, and hiking uses.
- Open to horseback and hiking uses.
- Open to hiking uses only.
- Bureau of Land Management
- City/County Govt
- Private Lands
- State Lands
- Area CLOSED to Target Shooting
- # Wet Weather Gate
- o Campground - fee required
- i Parking Lot
- E Horse staging area
- 5820 Road Number
- T5825A Trail Number



Red Canyon Park



## BUREAU OF LAND MANAGEMENT

Royal Gorge Field Office

3170 East Main Street, Canon City, CO 81212

(719) 269-8500, [www.co.blm.gov](http://www.co.blm.gov)

**The Shelf Road and Gulches Designated Road and Trail System** – Motorized travel in this area is limited to **designated** roads and trails identified for off-highway vehicle (OHV) travel. Only the routes displayed on the reverse side of this map sheet in **blue** and **brown** are open to motorized travel with off-highway vehicles.



Look for signs like these showing the types of uses permitted on each route.

### Be a Responsible User of Your Public Lands



- **Limit your use** to designated roads and trails identified for off-highway vehicle travel.
- **Do not create** new roads or trails by riding off designated routes.
- **Prevent soil erosion** by protecting vegetation and soils from damage.
- **Park** at existing parking areas and pull-offs.
- **Register** your off-highway vehicle – it is Colorado law! (Available at all State Park Offices and at many recreation vehicle dealerships.)
- **Avoid** motorized travel when conditions are wet to prevent damage to roads and trails. Some of this area is **CLOSED** to motorized travel during wet weather conditions. Call (719) 269-8500 for current road information.

\* **Map Information** – The Shelf Road and Gulches Road and Trails Map shows routes designated for OHV travel as of January 1, 2006. **Changes** in the available routes will occur over the next few years as pending land exchanges take place and new trails are constructed. Revised editions of the map sheet will be available as changes occur. **Please check with BLM to ensure that you have the latest version of the map.** Current maps may be obtained by contacting BLM at the address and phone number listed above or at the Colorado BLM internet site at [www.co.blm.gov/recweb/ohv.htm](http://www.co.blm.gov/recweb/ohv.htm).