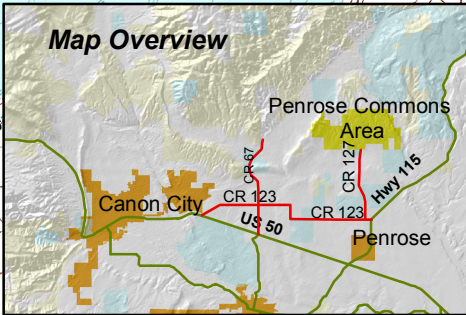
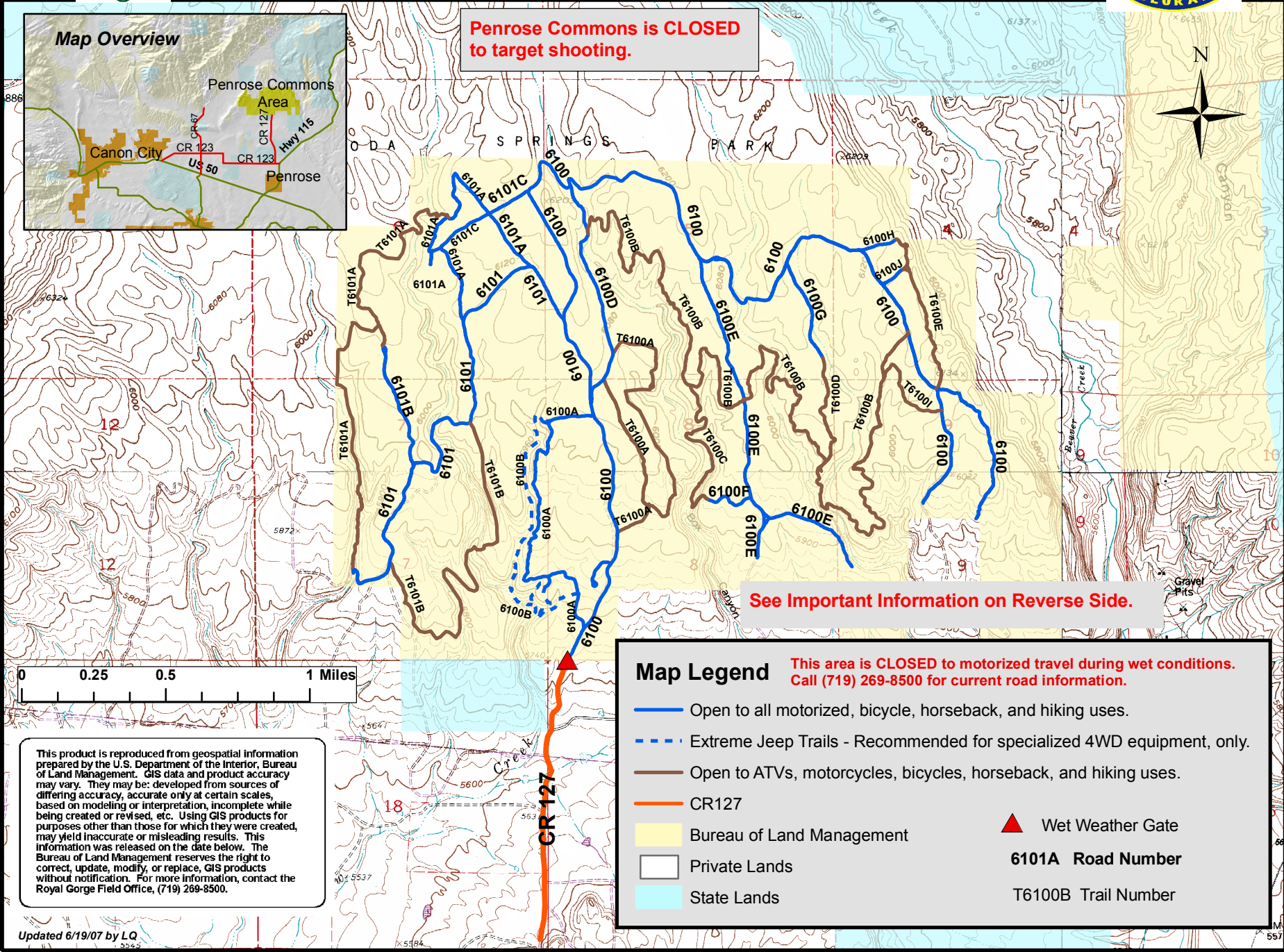




# Penrose Commons Roads and Trails BLM Royal Gorge Field Office



**Penrose Commons is CLOSED to target shooting.**



**See Important Information on Reverse Side.**

This product is reproduced from geospatial information prepared by the U.S. Department of the Interior, Bureau of Land Management. GIS data and product accuracy may vary. They may be developed from sources of differing accuracy, accurate only at certain scales, based on modeling or interpretation, incomplete while being created or revised, etc. Using GIS products for purposes other than those for which they were created, may yield inaccurate or misleading results. This information was released on the date below. The Bureau of Land Management reserves the right to correct, update, modify, or replace, GIS products without notification. For more information, contact the Royal Gorge Field Office, (719) 269-8500.

**Map Legend** This area is **CLOSED** to motorized travel during wet conditions. Call (719) 269-8500 for current road information.

- Open to all motorized, bicycle, horseback, and hiking uses.
- - - Extreme Jeep Trails - Recommended for specialized 4WD equipment, only.
- Open to ATVs, motorcycles, bicycles, horseback, and hiking uses.
- CR127
- ▲ Wet Weather Gate
- 6101A Road Number
- Private Lands
- T6100B Trail Number
- State Lands



## BUREAU OF LAND MANAGEMENT

### Royal Gorge Field Office

3028 East Main Street, Canon City, CO 81212

(719) 269-8500, [www.co.blm.gov](http://www.co.blm.gov)

**The Penrose Area Designated Road and Trail System** – Motorized travel in this area is limited to **designated** roads and trails identified for off-highway vehicle (OHV) travel. Only the routes displayed on the reverse side of this map sheet in **blue** and **brown** are open to motorized travel with off-highway vehicles. Look for the signs that show the types of uses permitted on each route.



### Be a Responsible User of Your Public Lands

- **Limit your use** to designated roads and trails identified for off-highway vehicle travel.
- **Do not create** new roads or trails by riding off designated routes.
- **Prevent soil erosion** by protecting vegetation and soils from damage.
- **Park and camp only** at existing parking areas and pull-offs.
- **Register** your off-highway vehicle – it is Colorado law! (Available at all State Park Offices and at many recreation vehicle dealerships.)
- **Avoid** motorized travel when conditions are wet to prevent damage to roads and trails. The Penrose area is **CLOSED** to motorized travel during wet road conditions. Call (719) 269-8500 for current road information.

### Map User Alert

This map sheet shows roads and trails designated for OHV travel as of June 19, 2007. **Changes** may occur. Revised editions of the map sheet will be available as changes occur. **Please check with BLM to ensure that you have the latest updated version of the map sheet.** Current maps may be obtained by contacting BLM at the address and phone number listed above. They are also available at [www.blm.gov/co/st/en/BLM\\_Programs/recreation/atvreg.html](http://www.blm.gov/co/st/en/BLM_Programs/recreation/atvreg.html).