

SW

A

A'

NE

2.4 MILES

2.1 MILES

WELL NAME: 7-18-298-C
 MAP INDEX: 1719
 T-R-S: 02S-098W-18
 867 FEET 78 FNL
 COMPANY: SHELL
 ELEVATION: 6,907 FT GL
 COUNTY: RIO BLANCO
 STATE: COLORADO

0
100
900
1000
1100
1200
1300
1400
1500
1600
1700
1800
1900
2000
2100
2200
2300
2400
2500
2600

Ulna Formation
 Parachute Creek Member

WELL NAME: Juhari 4-1
 MAP INDEX: 1003
 T-R-S: 02S-098W-4
 1,947 FEET 1,859 FNL
 COMPANY: Juhari Joe T.
 ELEVATION: 6,698 FT GL
 COUNTY: RIO BLANCO
 STATE: COLORADO

PROJECTION OF
 160-Ac R&D TRACT

WELL NAME: MMC-IRI-1
 MAP INDEX: 1063
 T-R-S: 01S-098W-26
 2,452 FEET 193 FNL
 COMPANY: Multi Mineral Corp.
 ELEVATION: 6,682 FT GL
 COUNTY: RIO BLANCO
 STATE: COLORADO

R7-R3 Resource Interval
 Overburden 1,085 Ft.
 Thickness 1,120 Ft.
 Oil Grade 27.8 Gallons/Ton
 Nahcolite Content ~ 7 %
 Dawsonite Content ~ 4 %

LEGEND

- RICH OIL SHALE
- LEAN OIL SHALE
- LEACHED ZONE
- DISSOLUTION SURFACE
- SALINE ZONE

INDEX MAP

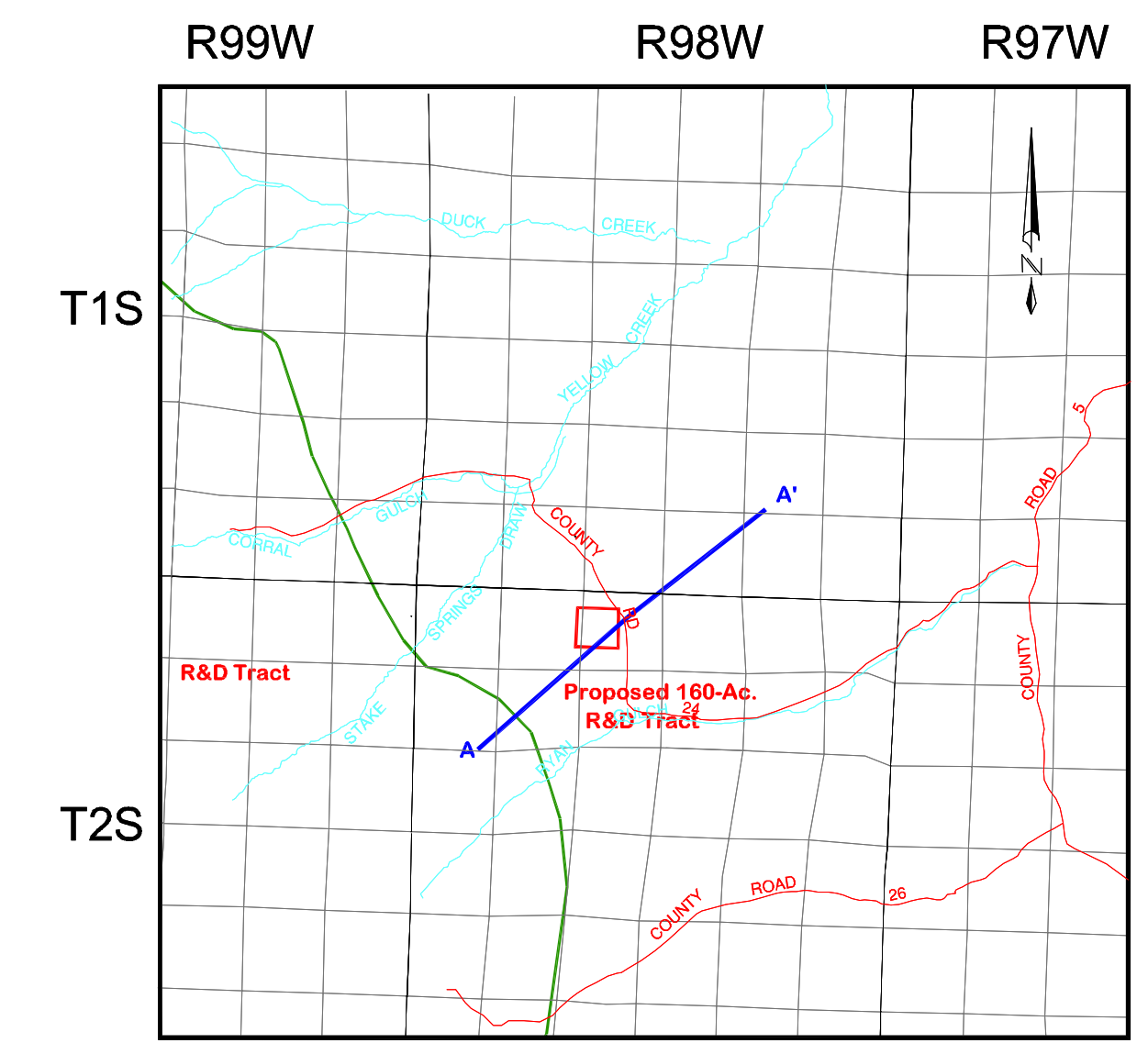


EXHIBIT H
 STRUCTURAL CROSS SECTION A-A'
 2nd GENERATION ICP PROJECT