

SW

A

A'

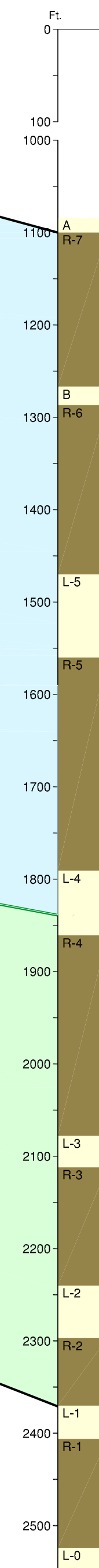
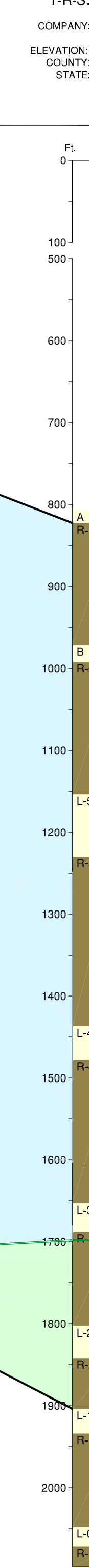
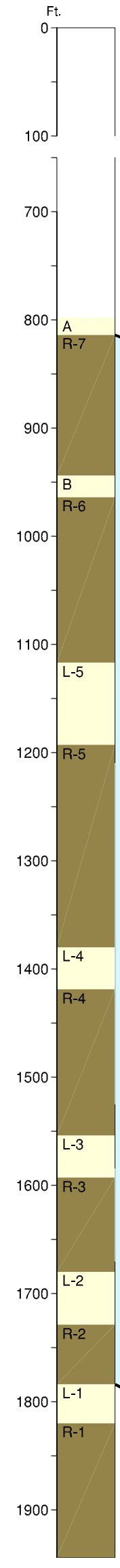
NE

WELL NAME: 1-11
 MAP INDEX: 1719
 T-R-S: 02S-09W-11
 1501 FEET - 1291 FEET
 COMPANY: SHELL
 ELEVATION: 6,899 FT. GL.
 COUNTY: RIO BLANCO
 STATE: COLORADO

WELL NAME: 3-1
 MAP INDEX: 1715
 T-R-S: 02S-09W-1
 325 FEET - 1,996 FEET
 COMPANY: SHELL
 ELEVATION: 6,673 FT. GL.
 COUNTY: RIO BLANCO
 STATE: COLORADO

WELL NAME: 10-32
 MAP INDEX: 1722
 T-R-S: 01S-09W-32
 125 FEET - 1,251 FEET
 COMPANY: SHELL
 ELEVATION: 6,521 FT. GL.
 COUNTY: RIO BLANCO
 STATE: COLORADO

Parachute Creek Member



PROJECTION OF
 160-Ac R&D TRACT

Resource Interval

LEACHED ZONE

SALINE ZONE

DISSOLUTION SURFACE

R7-R2 Resource Interval	
Overburden	870 Ft.
Thickness	1,020 Ft.
Oil Grade	26.5 Gallons/Ton
Nahcolite Content	~ 0.3 %
Dawsonite Content	~ 5.0 %

Limit of Saline Zone

LEGEND

- RICH OIL SHALE
- LEAN OIL SHALE
- LEACHED ZONE
- DISSOLUTION SURFACE
- SALINE ZONE

INDEX MAP

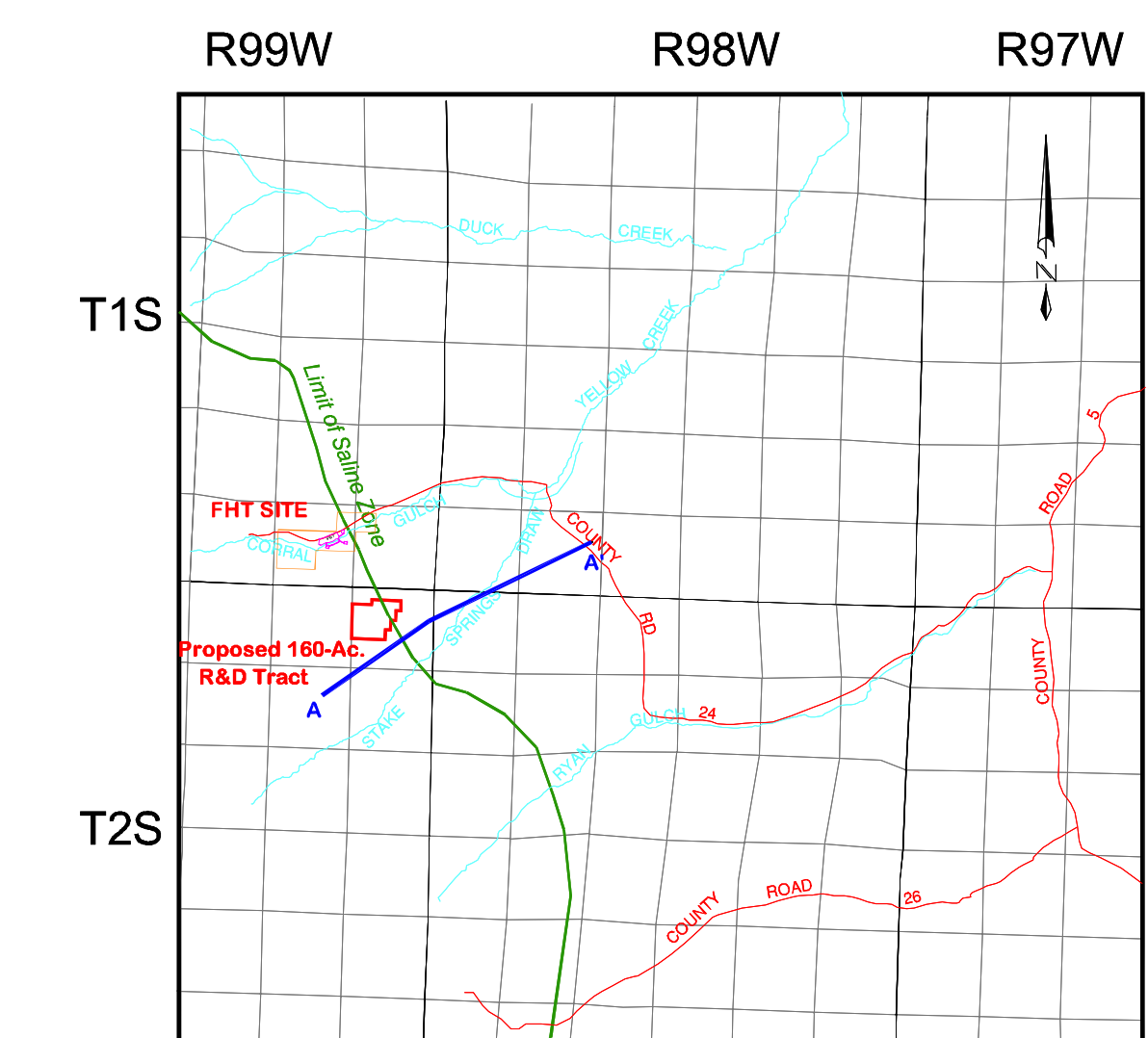


EXHIBIT I

STRUCTURAL CROSS SECTION A-A
 OIL SHALE TEST PROJECT

Drawn By: KW Date: 02/15/2006
 Approved By: Date:

FILE: SECA-A.DWG
 3235\Task 45\POO\FINAL\FEB2006

