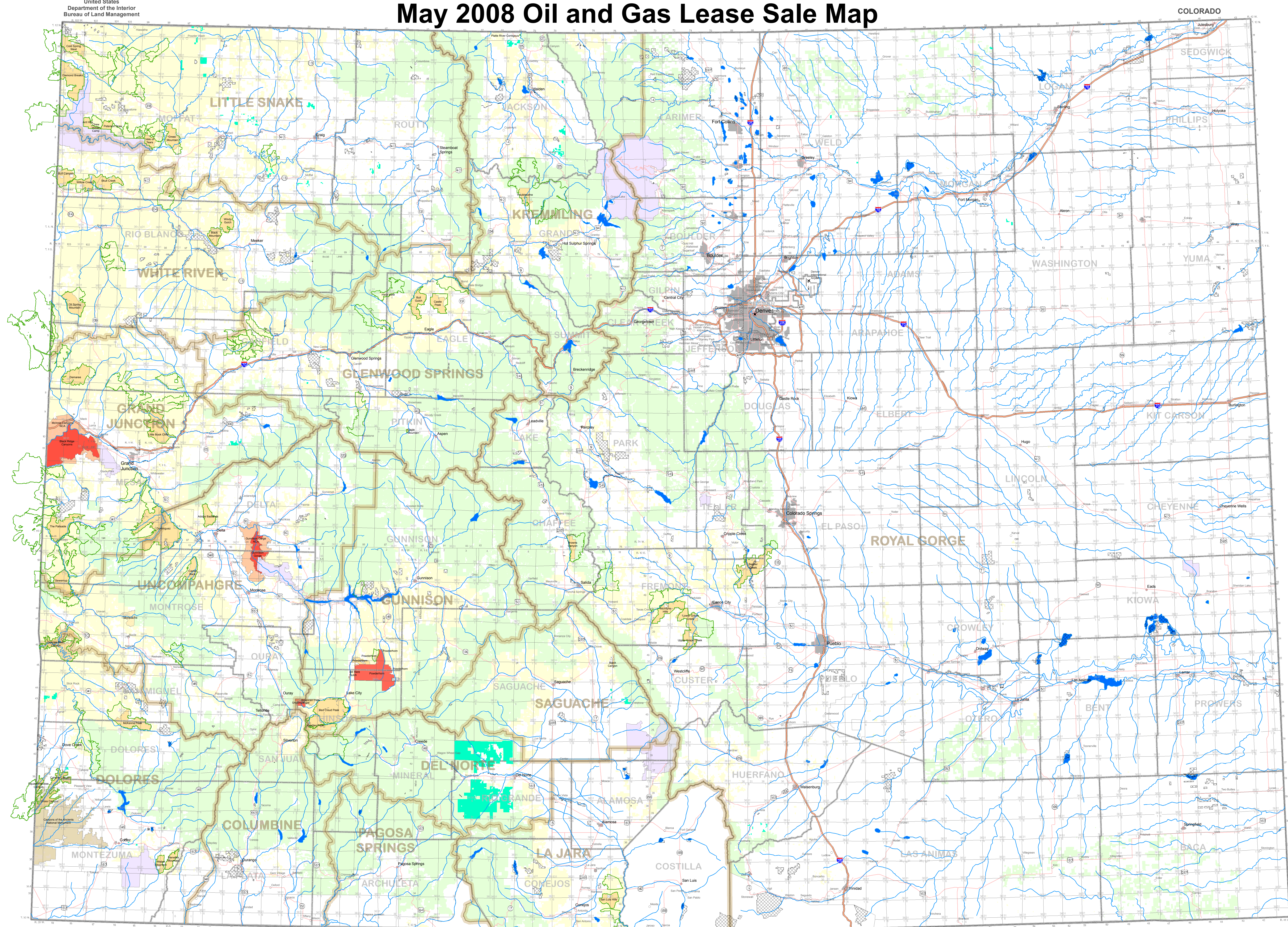


State of Colorado May 2008 Oil and Gas Lease Sale Map

United States
Department of the Interior
Bureau of Land Management

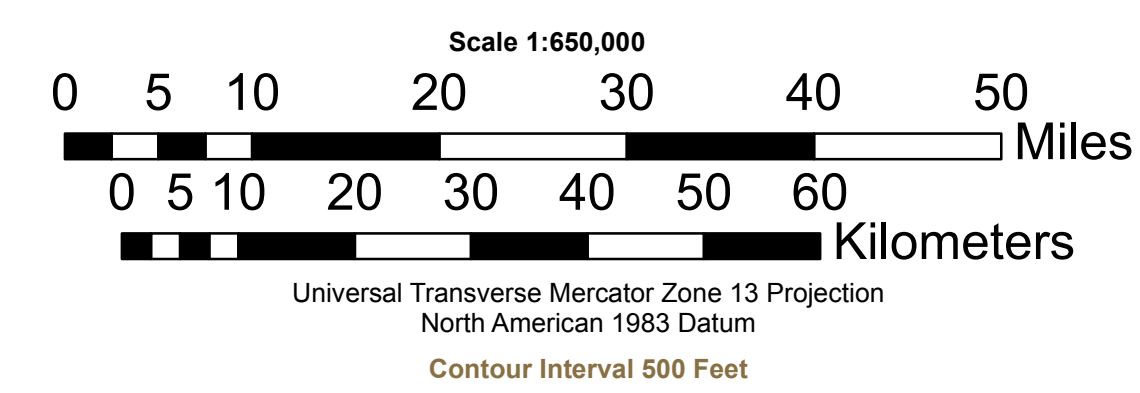
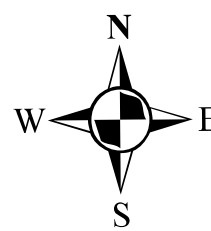


COLORADO



NOTE TO MAP USERS

The land ownership status and administrative boundaries are published as general planning and management tools. Some of the lands and boundaries may be shown incorrectly due to lack of information available to the BLM with respect to the nature of acquisition. The official land records in the respective offices of the Bureau of Land Management or other responsible Federal agencies should be checked for up-to-date status on any specific tract of land.



- ★ State Capital
- County Seats
- Other Cities or Towns
- Interstate Highway
- U.S. Highway
- State Highway
- Urban Areas
- May 2008 Lease Sale Areas
- BLM Field Office Boundaries
- State Boundary
- County Boundaries
- Township and Range
- Private Lands
- CWP Areas (2007)
- Public Lands
- National Forest
- National Parks, Monuments
- BLM Conservatively Designated Management Area
- BLM Wilderness Area
- BLM National Monument
- BLM Wilderness Study Area
- BLM National Conservation Area
- CDOW - State Wildlife Areas (May 2006)

Source: Bureau of Land Management, Last Modified: 2008
Map Prepared by: BLM, GISD, Geographic Services, as of 5/1/08