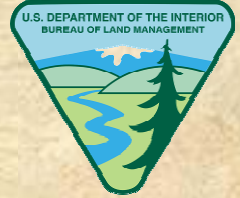




UNCOMPAHGRE FIELD OFFICE
Montrose, Colorado



**TRAVEL MANAGEMENT
PLAN AMENDMENT**

Public Scoping Meetings

Montrose	March 27, 2007
Delta	March 29, 2007
Naturita	April 11, 2007

Overview

- I. Proposed Action - Field Office Wide Changes**
- II. Proposed Actions - Dry Creek Area Changes**
- III. Dry Creek Travel Plan - Objectives & Major Issues**
- IV. Planning Schedule & Comment Period**



Overview

I. Proposed Action - Field Office Wide Changes

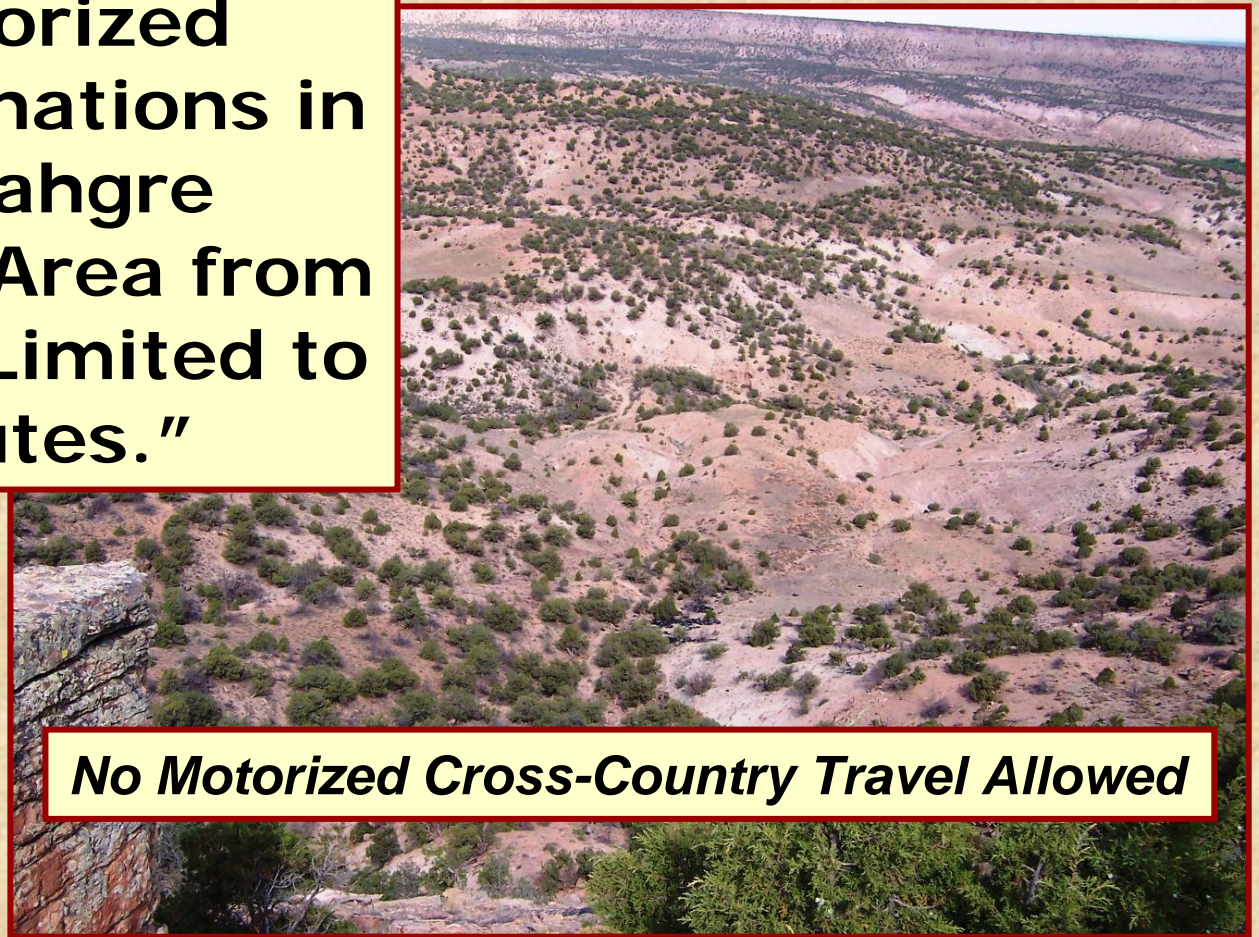
II. Proposed Action - Dry Creek Area Changes

III. Dry Creek Travel Plan - Objectives & Major Issues

IV. Planning Schedule & Comment Period

PROPOSED ACTION

Change motorized travel designations in the Uncompahgre Field Office Area from "Open" to "Limited to Existing Routes."

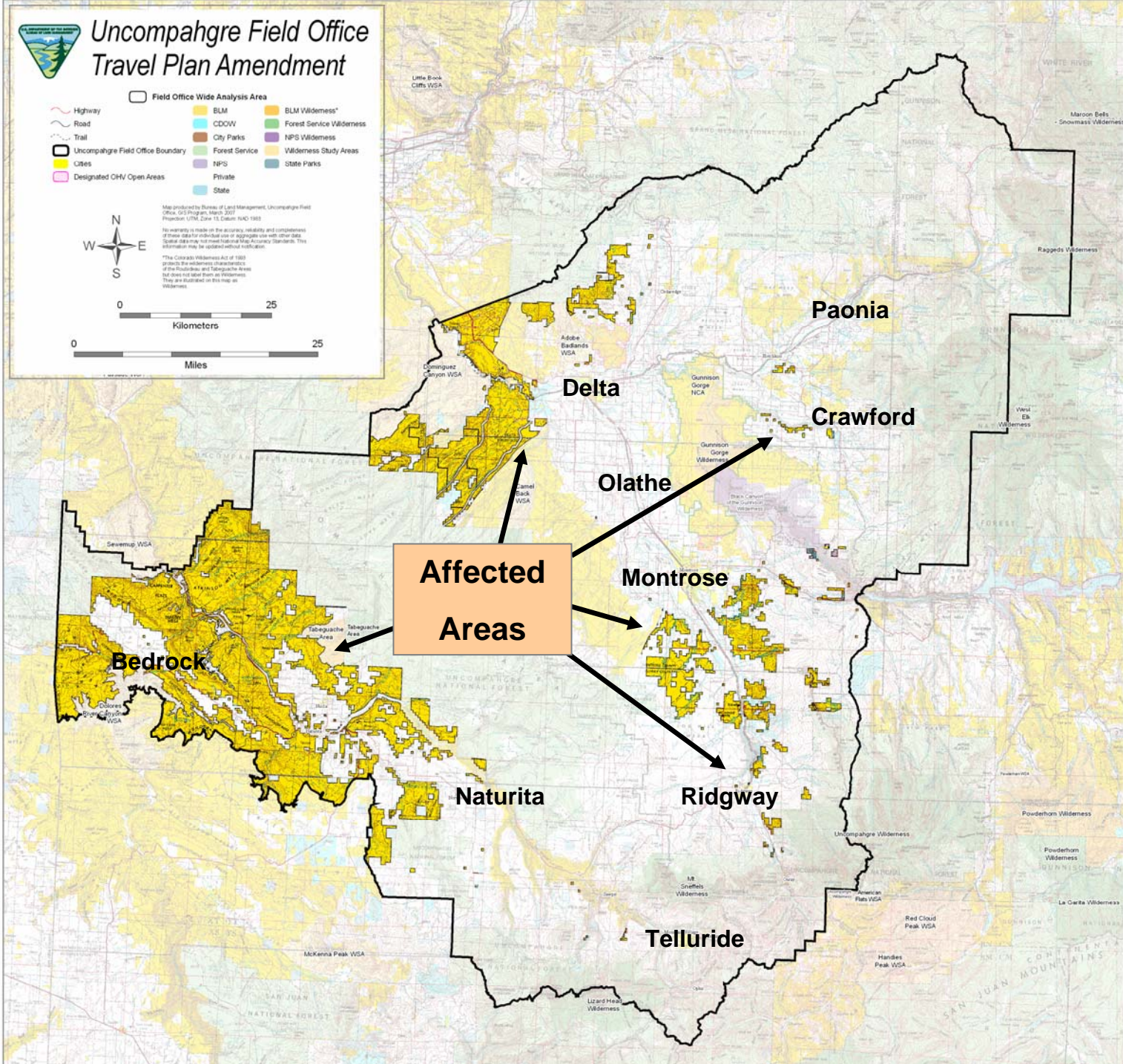
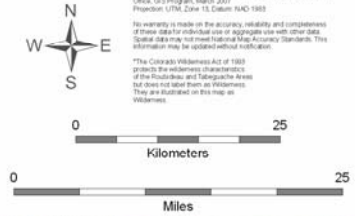


No Motorized Cross-Country Travel Allowed



Uncompahgre Field Office Travel Plan Amendment

- Highway
- Road
- Trail
- Uncompahgre Field Office Boundary
- Cites
- Designated CHV Open Areas
- Field Office Wide Analysis Area
- BLM
- CDDW
- City Parks
- Forest Service
- NPS
- Private
- State
- BLM Wilderness*
- Forest Service Wilderness
- NPS Wilderness
- Wilderness Study Areas
- State Parks



BLM Lands NOT Affected by Proposed Actions

- ❖ *Gunnison Gorge NCA Plan 2004*
Peach Valley Open Area
Flat Top Open Area
- ❖ North Delta Open Area
- ❖ North Fork Travel Management Area
- ❖ Other areas with “Limited to Existing” or “Limited to Designated Routes” Travel Designations.

NOT affected by Transportation Plan



**Fire, Emergency,
Law Enforcement,
and Military Access**



Why Are We Doing This?

- ❖ **Maintain & Improve Public Land Health.**
- ❖ **Protect Public Land resources.**
- ❖ **Address demand for access.**
- ❖ **Address resource & user concerns.**

Why Are We Doing This?

- ❖ **Maintain natural settings for outstanding recreation experiences.**
- ❖ **Comply with regulations regarding OHV designations.**
- ❖ **Implement BLM Travel Management planning guidance & policy.**



Route-by-Route analyses & designations for Field Office areas outside of Dry Creek will be done in a separate planning process at a later date.



Overview

I. Proposed Action - Field Office Wide Changes

II. Proposed Actions - Dry Creek Area Changes

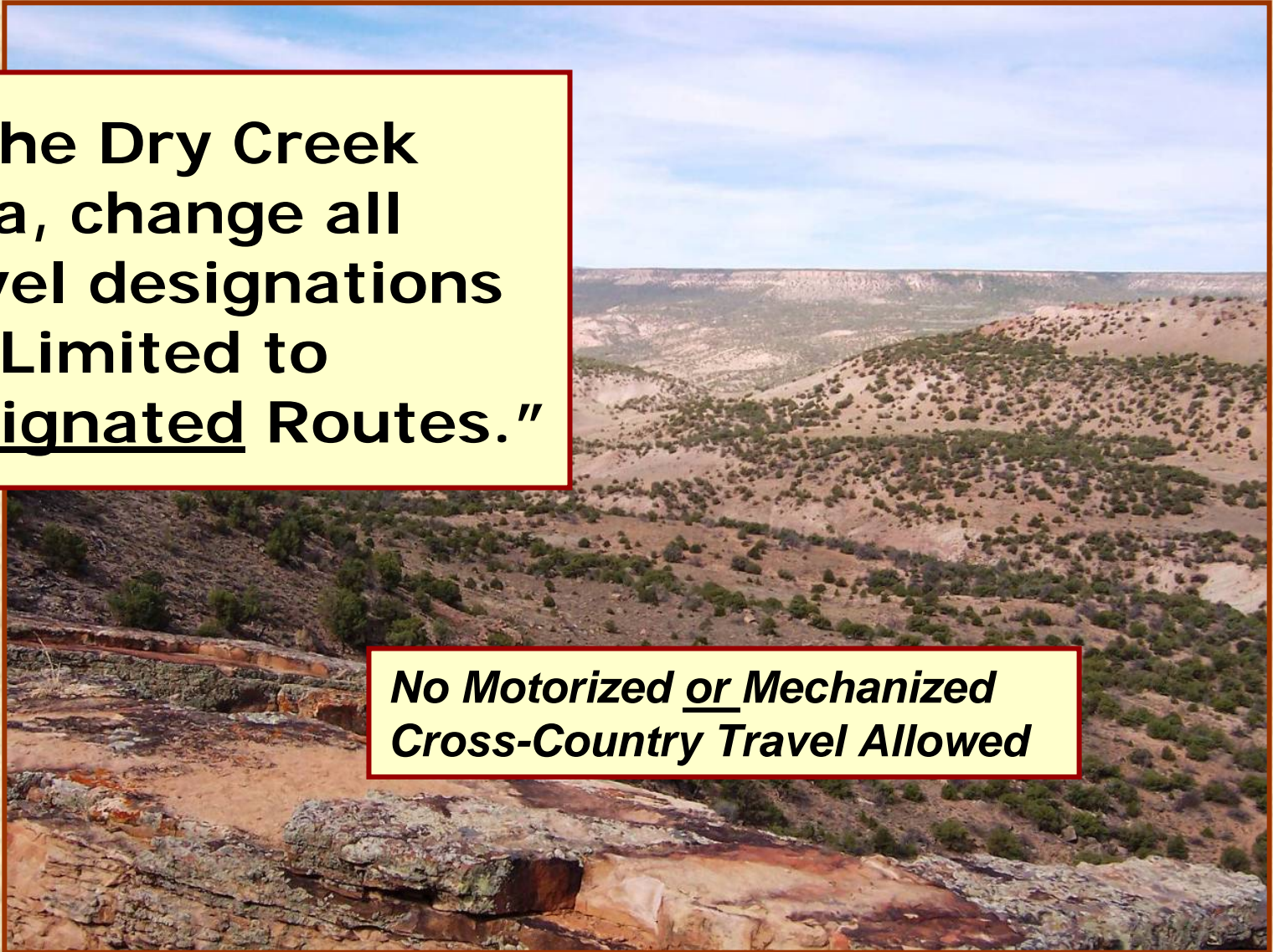
III. Dry Creek Travel Plan - Objectives & Major Issues

IV. Planning Schedule & Comment Period

PROPOSED ACTION

In the Dry Creek Area, change all travel designations to “Limited to Designated Routes.”

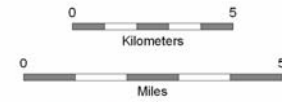
No Motorized or Mechanized Cross-Country Travel Allowed





Dry Creek Travel Plan & Environmental Assessment

- Analysis Boundary**
- Road & Trail Inventory
 - Highways
 - Cities
 - Wilderness Study Areas
 - BLM
 - CDOV
 - City Parks
 - Forest Service Wilderness
 - NPS
 - Private
 - State
 - BLM Wilderness*
 - Forest Service Wilderness
 - NPS Wilderness



Map produced by Bureau of Land Management, Uncompahgre Field Office GIS Program, March 2007
 Projection: UTM, Zone 13, Datum: NAD 1983

*No warranty is made as to the accuracy, reliability and completeness of these data for individual use or aggregate use with other data. Scale 1:50,000. Not used to meet National Map Accuracy Standards. This information may be updated without notification.

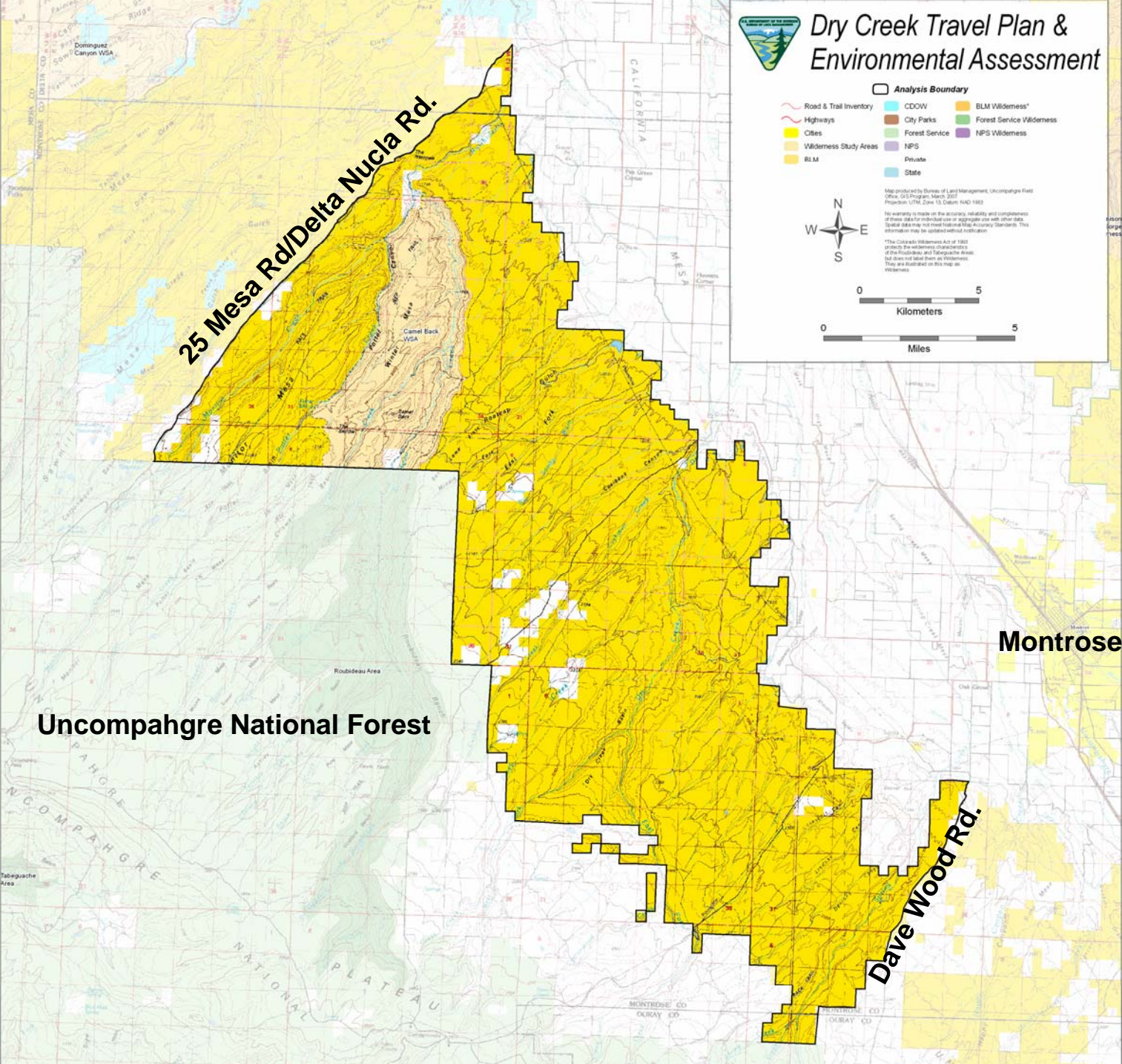
**The Colorado Wilderness Act of 1980 protects the wilderness characteristics of the Routteau and Teton areas, but does not label them as wilderness. They are illustrated on this map as wilderness.

25 Mesa Rd/Delta Nucla Rd.

Montrose

Uncompahgre National Forest

Dave Wood Rd.



PROPOSED ACTION

**Develop a
Comprehensive
Travel Management
Plan for the Dry
Creek Area**



Plan will cover 115,00 acres



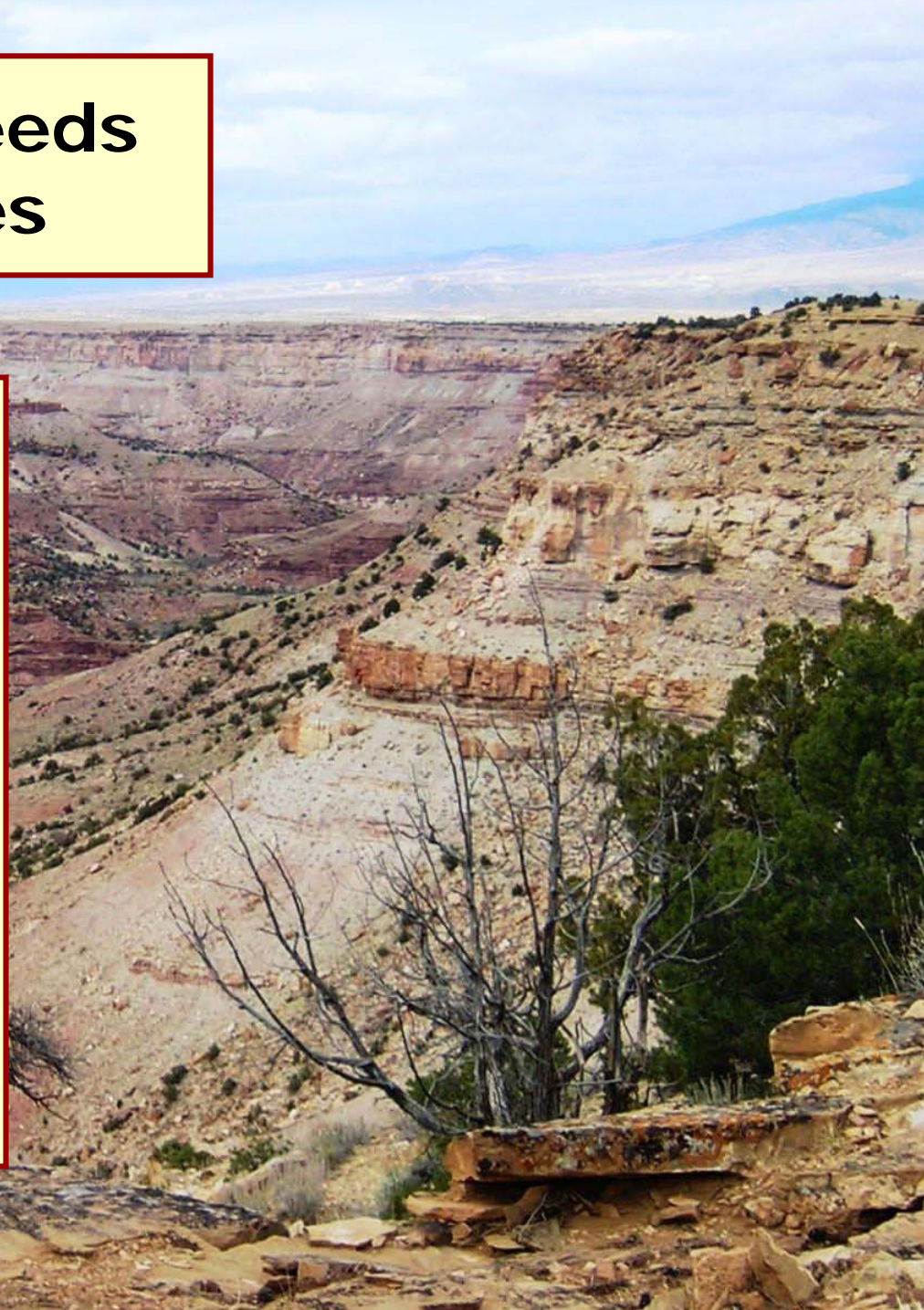


What's the Need?

- ❖ Respond proactively to growth.
- ❖ Address increasing & competing demand.
- ❖ Reduce/mitigate resource damage.
- ❖ Balance traditional & new uses.
- ❖ Resolve access issues.
- ❖ Provide high quality user experiences & benefits.

Address Access Needs for Multiple Uses

- **Recreation**
- **Wilderness**
- **Grazing**
- **Wildlife habitat**
- **Commercial &
Permitted uses**
- **Firewood
cutting**





Overview

I. Proposed Action - Field Office Wide Changes

II. Proposed Action - Dry Creek Area Changes

III. Dry Creek Travel Plan - Objectives & Major Issues

IV. Planning Schedule & Comment Period

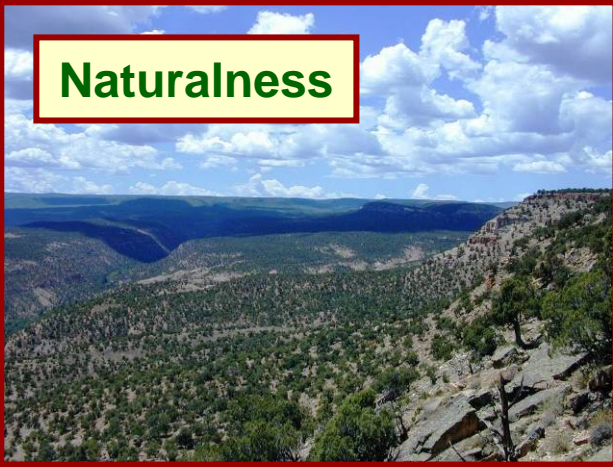
DRY CREEK PLAN OBJECTIVE

***Manage Travel to
Protect Natural &
Wilderness
Resources in the
Dry Creek
Planning Area***



***Issue: Manage Travel to Preserve
Wilderness Resources in Camel Back
Wilderness Study Area (WSA)***

Naturalness



**Geologic &
Scenic Values**



**Opportunities
for Non-
Motorized
Recreation**

**Opportunities for
Solitude**



Issue: Manage Travel to Achieve & Maintain Healthy Plant & Animal Communities & Habitats



Sagebrush



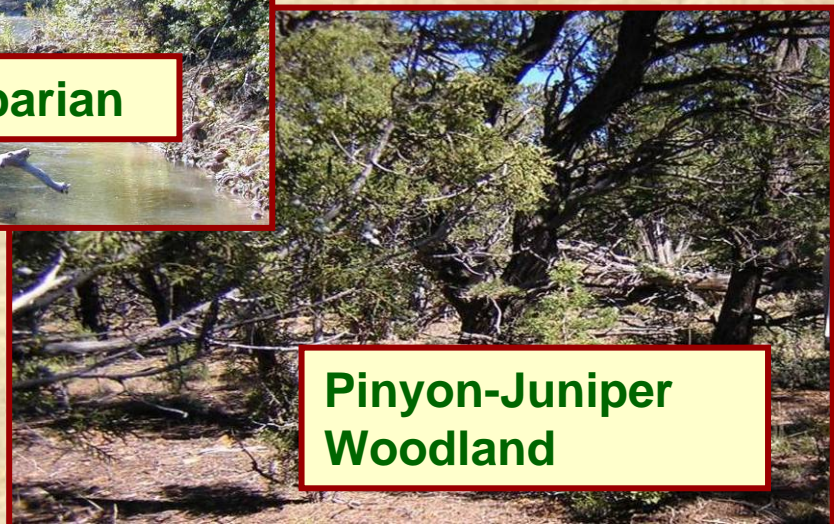
Mountain Shrub



Riparian



Grassland



Pinyon-Juniper Woodland

Issue: Manage Travel to Protect Biodiversity



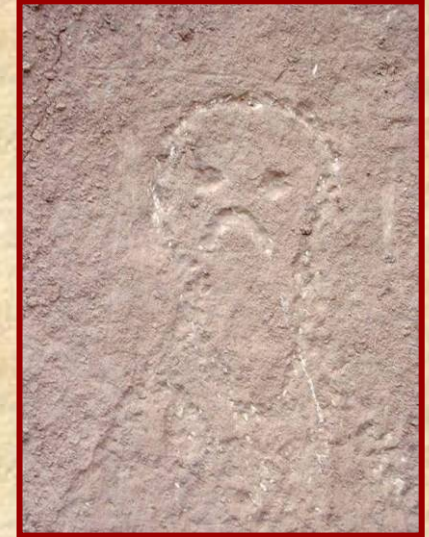
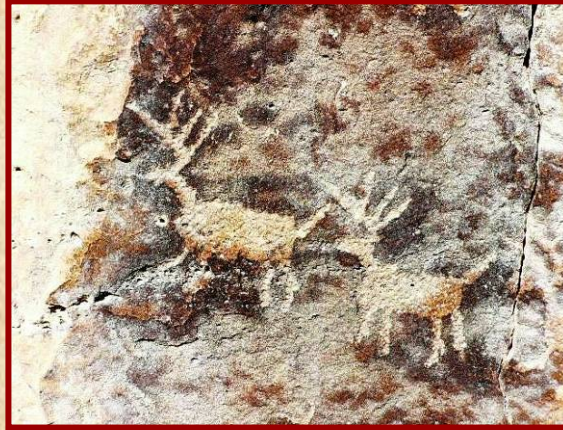
Issue: Manage Travel to Protect Special Status Species & Their Habitat



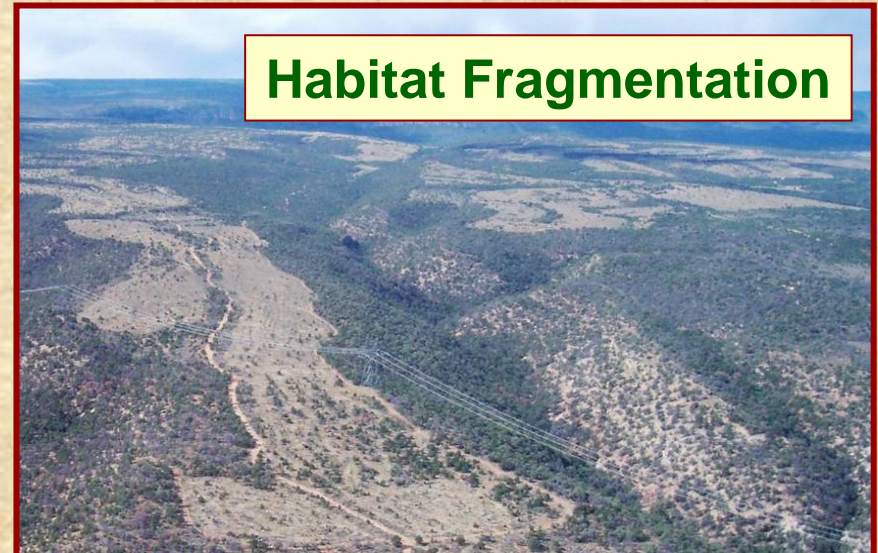
Issue: Manage Travel to Improve Wildlife Habitat



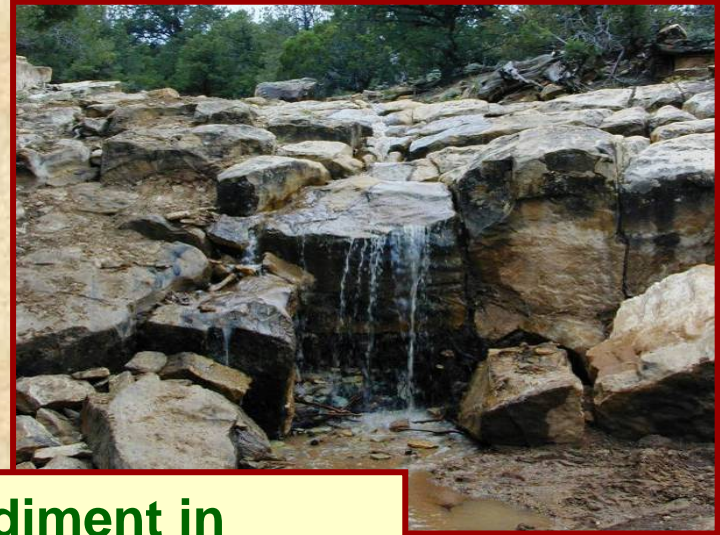
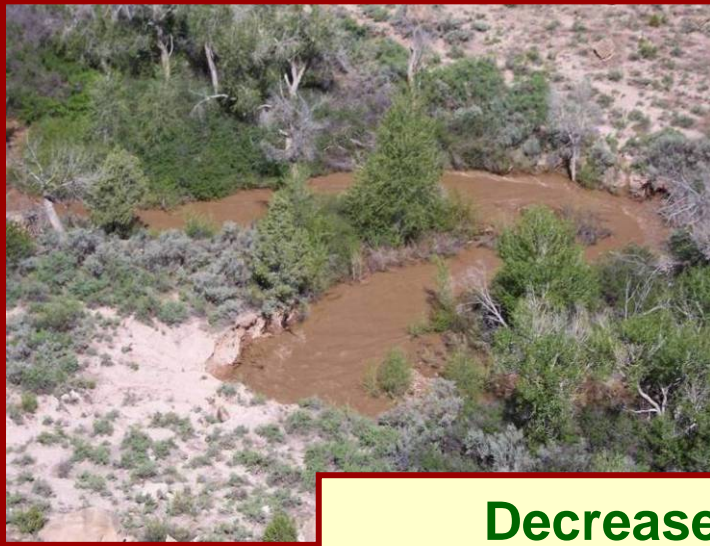
Issue: Manage Travel to Protect Cultural & Heritage Resources



Issue: Manage Travel to Reduce Landscape Health Concerns



Issue: Manage Travel to Reduce On- and Off-Site Impacts



**Decrease Sediment in
Gunnison & Uncompahgre Rivers**



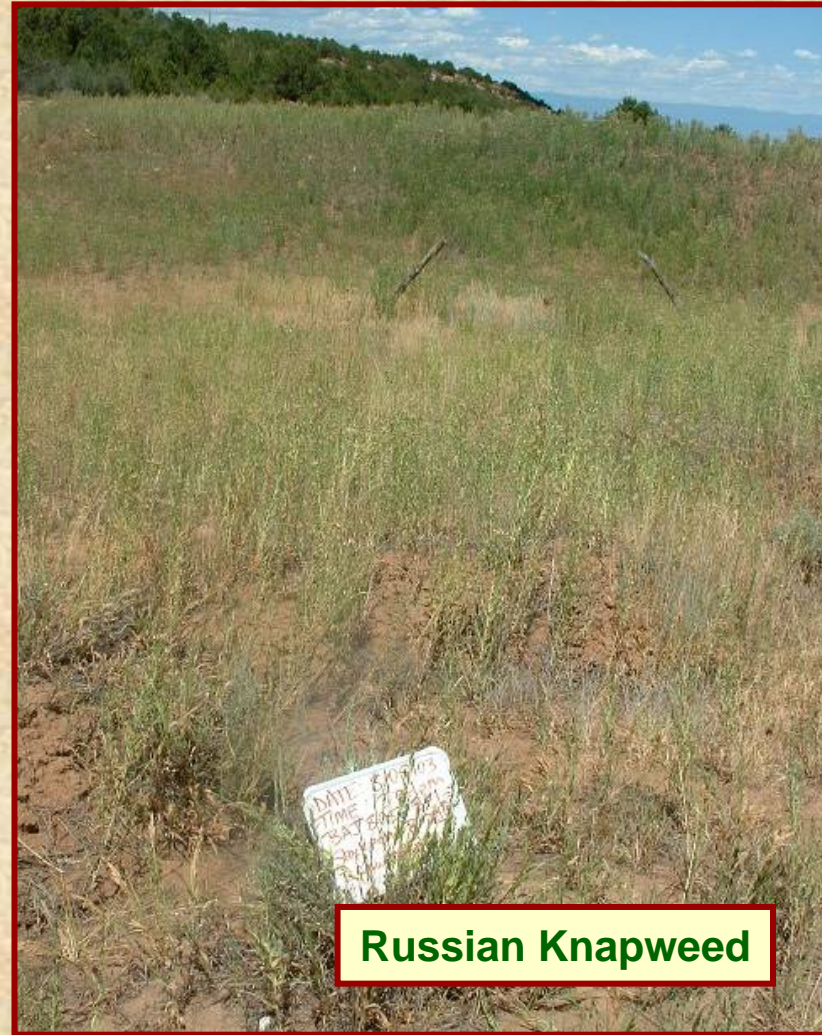
Issue: Manage Travel to Address Riparian & Water Quality Concerns



Issue: Manage Travel to Reduce Spread of Invasive Species & Noxious Weeds



Burdock



Russian Knapweed

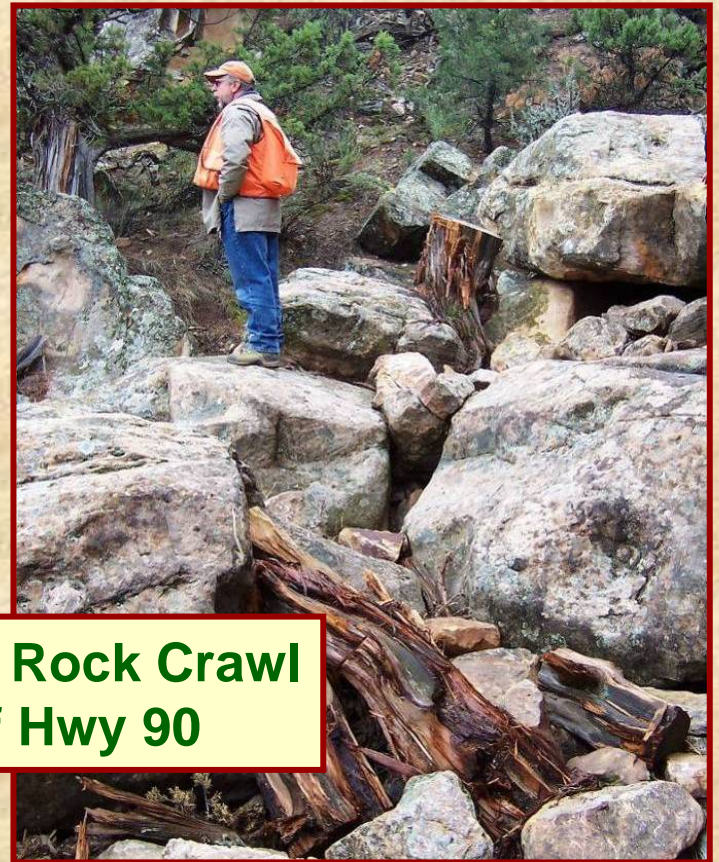
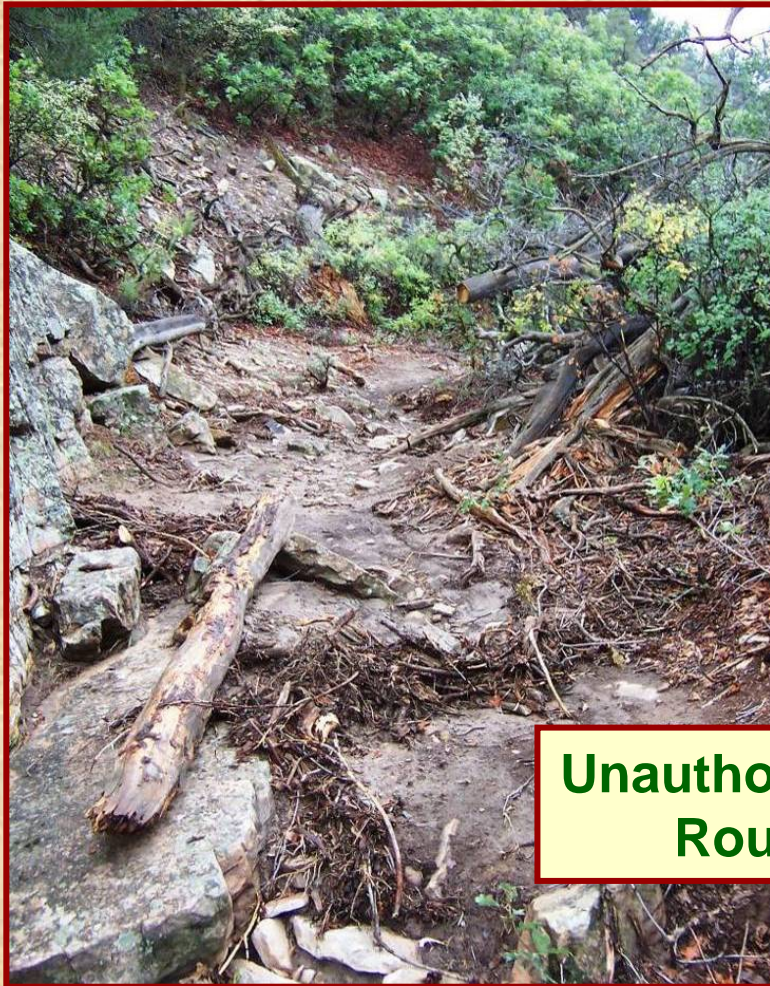


Tamarisk

Issue: Manage Travel to Reduce Resource Damage from Unauthorized Uses



**Issue: Resource Damage
from Unauthorized Route
Construction**



**Unauthorized Rock Crawl
Route off Hwy 90**

Issue: Implementing Effective Travel Management & Monitoring Strategies



Landscape Health Assessments



OHV Monitoring



DRY CREEK PLAN OBJECTIVE

***Provide Adequate Access
for Administrative,
Commercial & Other
Authorized Uses***

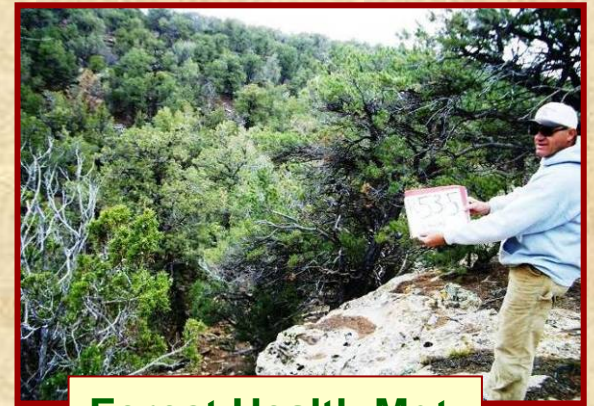




Rangeland Mgt.



Fuels Reduction



Forest Health Mgt.

Issue: Adequate Access for Federal & State Resource Administration Needs



Game Management



Project Maintenance



Monitoring

ACCESS NEEDS associated with **Authorized, Permitted or Officially Approved** uses will be addressed:

- ❖ *County roads*
- ❖ *Rights-of-ways*
- ❖ *Mining, oil & gas activities*
- ❖ *Other land use authorizations*
 - Grazing
 - Recreation permits
 - Moss & landscape rock collection
 - Woodland product harvest, etc.

DRY CREEK PLAN OBJECTIVE

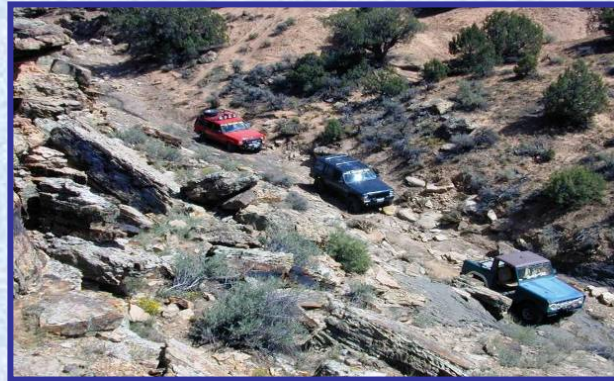
***Provide Adequate Access for
Quality Recreation Experiences
and Responsible Use***

- ❖ *Motorcycle & ATV Riding*
- ❖ *4 Wheeling*
- ❖ *Rock Crawling*
- ❖ *Mountain Biking*
- ❖ *Trials Riding*
- ❖ *Hunting*

- ❖ *Horseback Riding*
- ❖ *Hiking*
- ❖ *Running/Walking*
- ❖ *Rock Climbing*
- ❖ *Camping*
- ❖ *Target Shooting*
- ❖ *Special Events*

PLAN OBJECTIVE

Manage Travel to Provide High Quality Recreation Experiences in Dry Creek



Issue: Increasing Recreation Use



Issue: Increasing Demand for Recreation Trails & Events

OFFROAD EXPOSURE



MONTROSE, CO

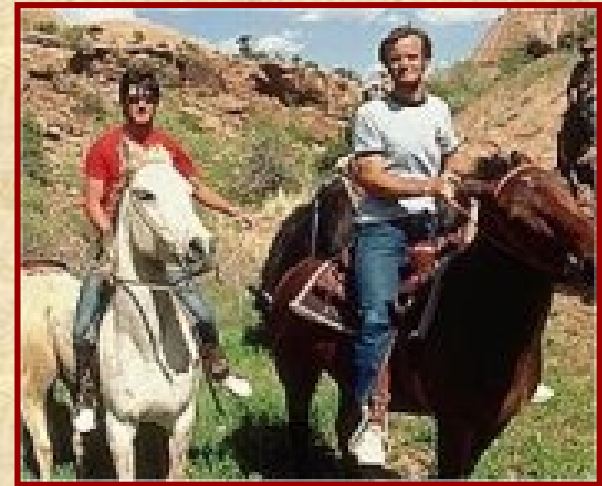
THE TRYING TRAIL
& CALAMITY CANYON

72 MINUTES - 8011

www.offroadexposure.com
Retail \$19.99



Issue: Providing A Spectrum of Travel Experiences for a Diversity of Users





Issue: Providing a Diversity of Motorized Opportunities



Issue: Providing a Diversity of Non-Motorized Opportunities



DRY CREEK PLAN OBJECTIVE

Identify Multiple Use Travel Management Network(s)

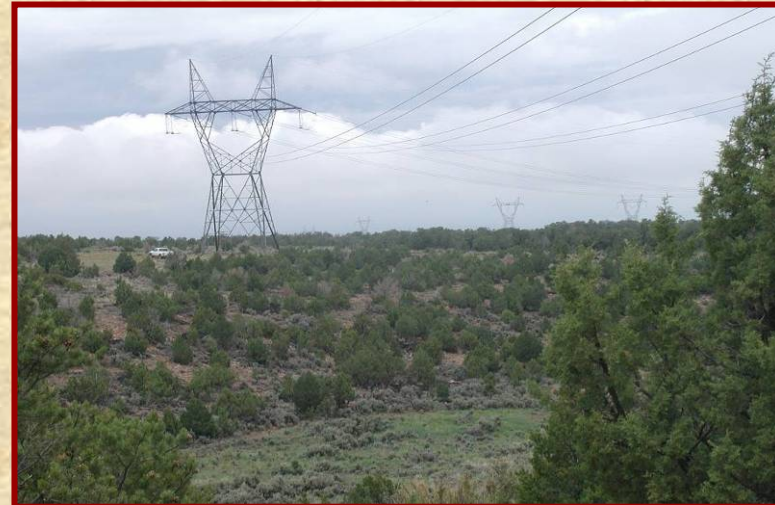


System of roads, trails and areas which include diversity of sites, routes and loop opportunities.

Issue: Sustainable Roads & Trails



Issue: Public Access on Utility Corridors, Rights-of-Ways, & Energy Development Routes



Issue: Road & Trail Maintenance



**Issue: Unauthorized Route
Construction**



Rim Road Area

**Issue: Proliferation
of "User-Created"
Routes**



Issue: Compatibility with USFS Travel Management



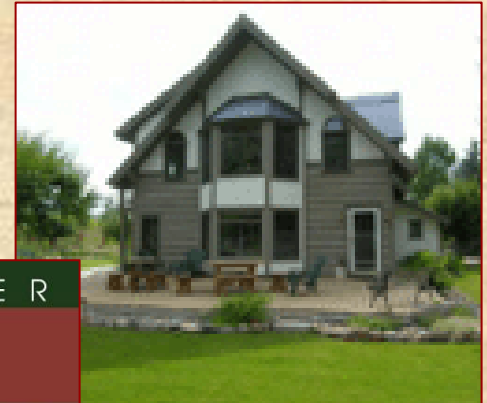
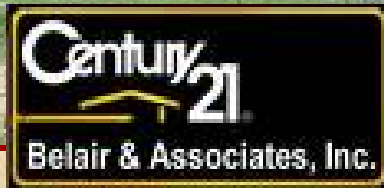
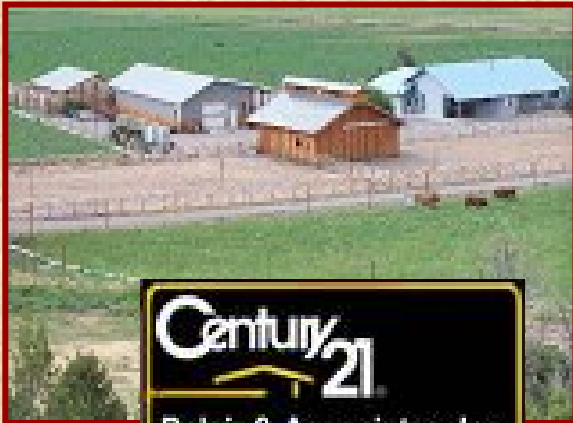
Issue: *Protecting Private Property Rights*



Issue: Increased Development on Adjacent Private Lands



And More Residents With Travel Demands on Public Lands



Issue: Need for Directional & Informational Signs & Maps



Issue: Are New Travel-Related Amenities Needed to Address Use, Safety, & Resource Concerns?





Overview

I. Proposed Action - Field Office Wide Changes

II. Proposed Action - Dry Creek Area Changes

III. Dry Creek Travel Plan - Objectives & Major Issues

IV. Planning Schedule & Comment Period

Schedule

- **Public Scoping Period** **March 7 – April 30, 2007**
- **Public Input on individual trails and travel networks** **July 2007**
- **Draft Environmental Analysis (EA)** **Fall - Winter 2007-08**
- **30-day Comment Period** **Winter 2008**
- **Prepare Final EA** **Winter-Spring 2008**
- **Plan Amendment ROD and Final EA/Signed Record OF Decision (ROD)** **Spring-Summer 2008**

Comment Period Ends

Monday, April 30, 2007

How you can submit comments:

1) Fill out comment form here today.

2) Mail

*Please refer to your handouts
for addresses & fax number.*

3) Fax

4) Email

5) Drop off written comments at our office.

Review Travel Documents & Maps at:

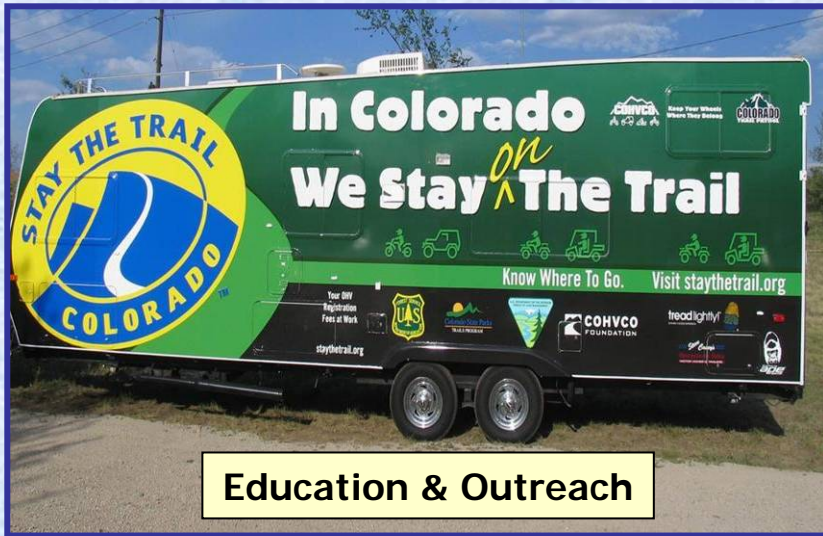
**Montrose Public Lands Center
2505 S. Townsend Avenue
Montrose, CO**



Online at:

**<http://www.co.blm.gov/ubra>
(see handout)**

OUR OBJECTIVE



Education & Outreach



BLM OHV Trail Crew

Get the Message Out!



User Group Involvement



Enforce Regulations



Get YOU Involved!!



A sunset over a mountain range. The sky is filled with soft, colorful clouds in shades of orange, yellow, and purple. The sun is low on the horizon, creating a bright glow. The mountains in the foreground are silhouetted against the bright sky.

**Thanks for Helping us
Manage your Public Lands!**

Presentation will start again in 30 seconds.