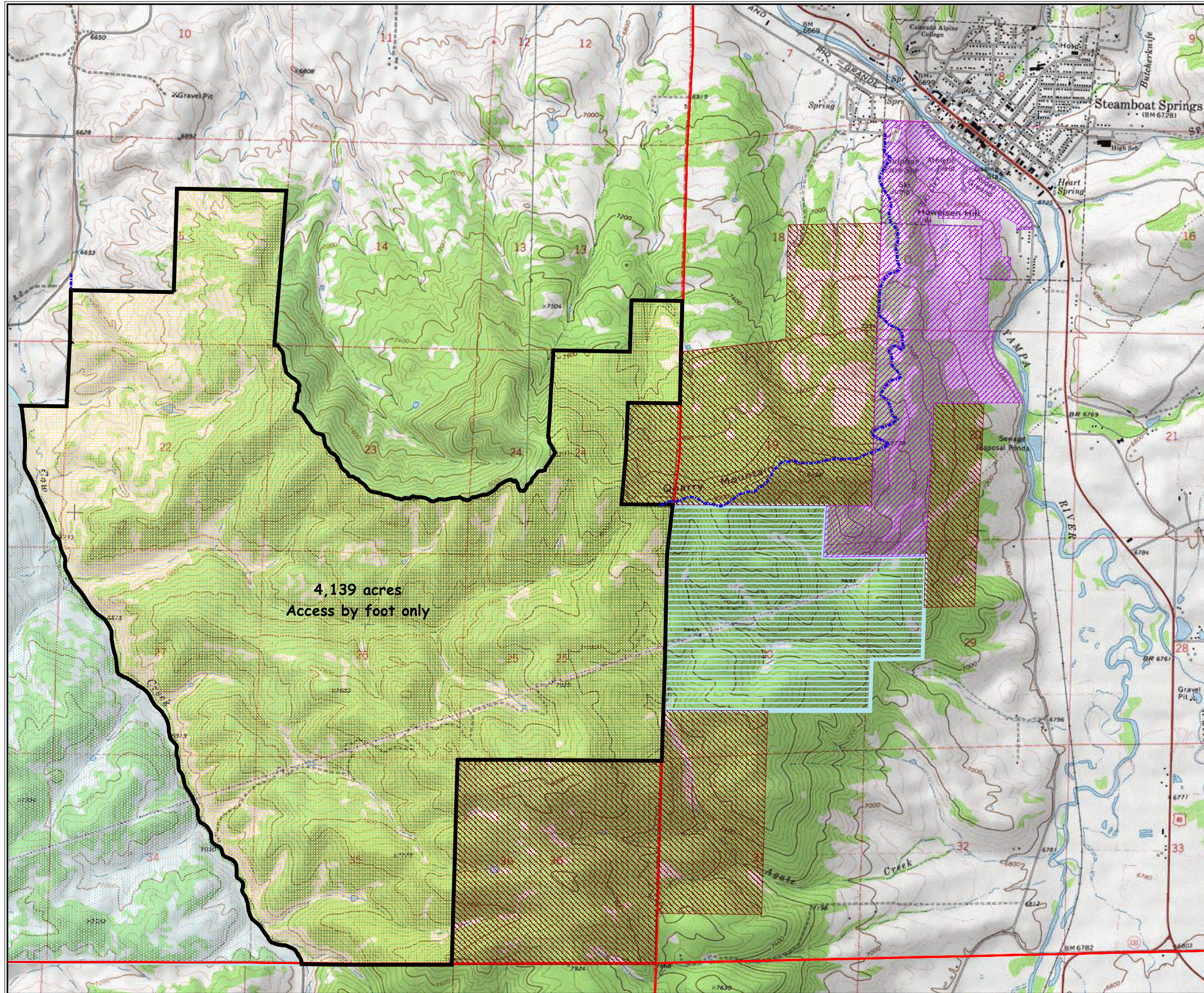


Emerald Mountain T6N R85W (foot access only)

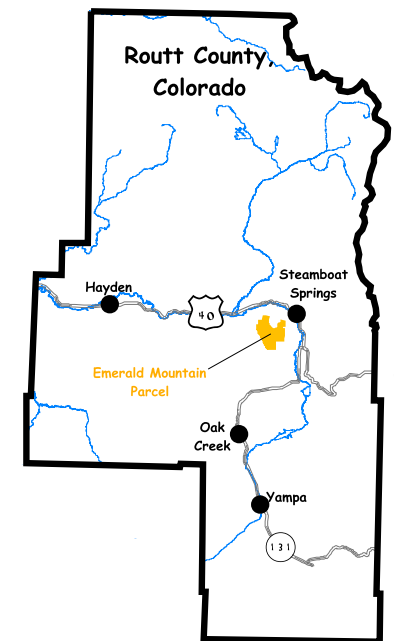


4,139 acres
Access by foot only

Legend

- Public Access
- Emerald Mountain Boundary
- City of Steamboat Springs Property
- Conservation Easements (private land)
- Surface Management Status**
- BLM
- Division of Wildlife
- Private
- State Land Board

Location Map



Map Scale



No warranty is made by the Bureau of Land Management as to the accuracy, reliability, or completeness of these data for individual use or aggregation use with other data. All boundaries are an approximate representation.