



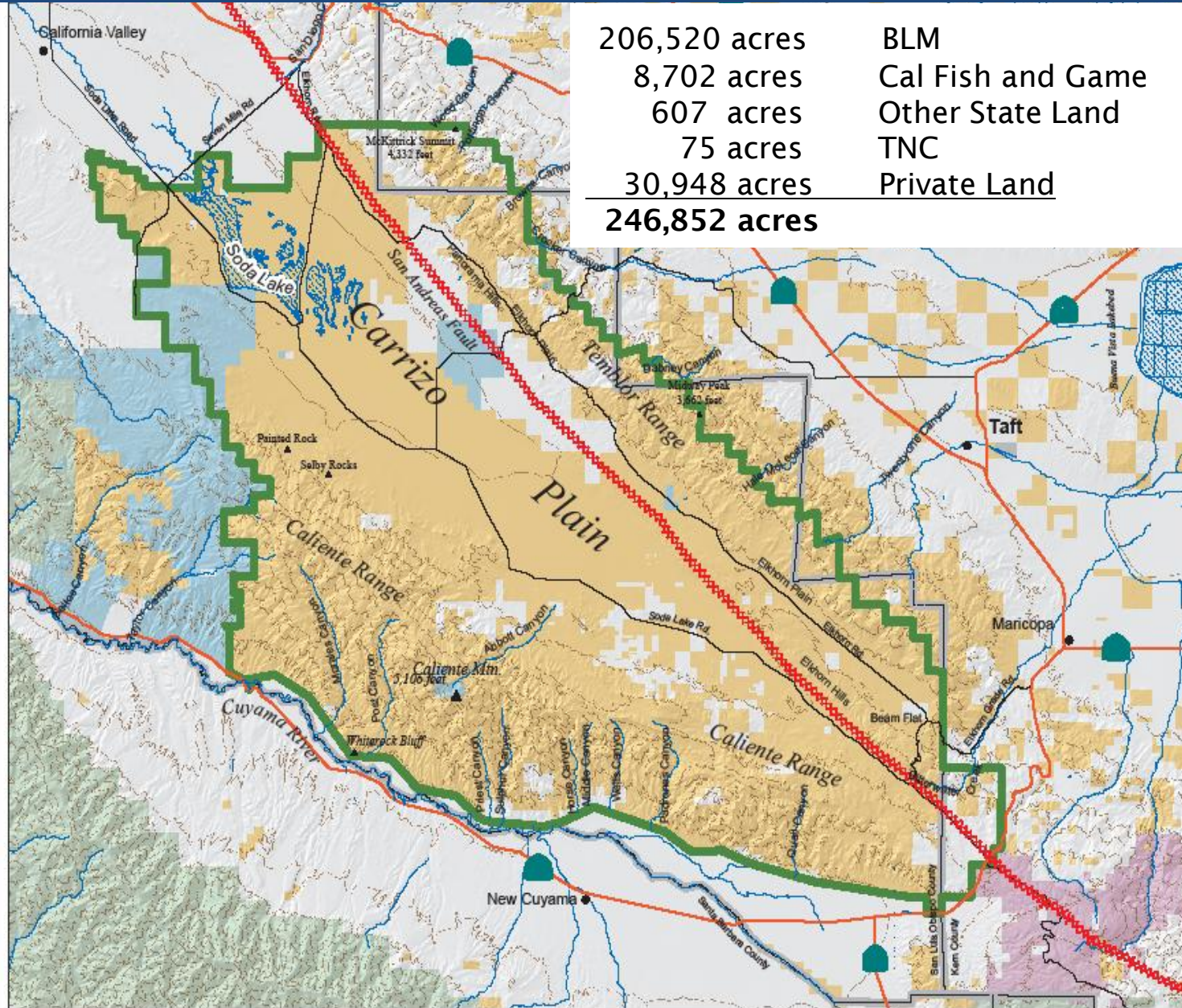
Carrizo Plain National Monument

Draft Resource Management Plan

and

Environmental Impact Statement

Carrizo Plain National Monument

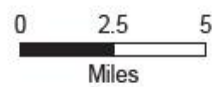


206,520 acres	BLM
8,702 acres	Cal Fish and Game
607 acres	Other State Land
75 acres	TNC
30,948 acres	Private Land
246,852 acres	

Physical Features and Planning Area Boundary

Bureau of Land Management
Bakersfield Field Office
Carrizo Plain National Monument
Resource Management Plan

- Legend**
- Carrizo Plain National Monument and Planning Area Boundary
 - County Boundary
 - County Maintained Road
- Land Ownership**
- Bureau of Land Management
 - Forest Service
 - US Fish and Wildlife Service
 - State Lands
 - County / City / Regional
 - Private/Other



Background

Caliente RMP (1997)

Carrizo Plain Natural Area Management Plan
(1996/1999)

- Builds on the previous Natural Area plan (1996)
- Incorporates National Monument Proclamation guidance
- Includes planning and implementation level decisions.

Coordination Since 2007

Extensive coordination, involvement, and support from general public, diverse interest groups, Native Americans, and managing partners (California Dept. Fish and Game and The Nature Conservancy)

Overall development and support from the Monument Advisory Committee (MAC) with county, ranching, and Native American representation.

- **Three scoping meetings**
- **Six MAC meetings**

Proclamation Sideboards

Protect significant resources

- Biological
- Cultural
- Geological
- Soda Lake

Withdrawn from mineral entry

Subject to valid existing rights

Prohibits cross country

off highway vehicle travel



Public Scoping Themes

- **Maintain undeveloped character**
- **Protect and restore habitat and native species**
- **Preserve unique and world-class cultural resources**
- **Allow public access while protecting objects of the Monument**
- **Use grazing as a vegetation management tool**
- **Disallow new oil and gas development due to risk of resource damage**

Plan Alternatives

Alternative 1 less intensive management and limited public use.

Alt. 2 (preferred) balance protection of Monument resources with compatible public uses.

Alt. 3 intensive management - broader array and higher levels of public use and access while still retaining rustic characteristics. More active biological restoration.

Alt. 4 “no action” – continue management under Caliente RMP and CPNA Plan.

The range of alternatives is constrained by Proclamation direction and, to an extent, scoping responses.

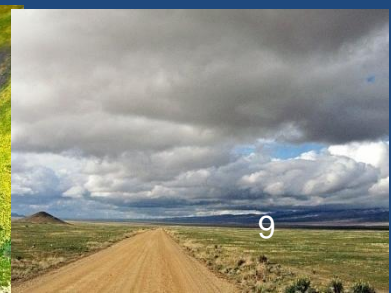
Preferred Alternative

- Focus on native species/T&E habitat and regional conservation
- Maintain undeveloped natural and unique values
- Identify core areas for endangered species management
- Maintain and restore mosaic of natural communities
- Engage Native Americans in protecting traditional use areas
- Foster public uses that are compatible with resource protection
- Cooperatively manage with partners and other agencies
- Promote scientific research and monitoring
- Accommodate valid existing rights

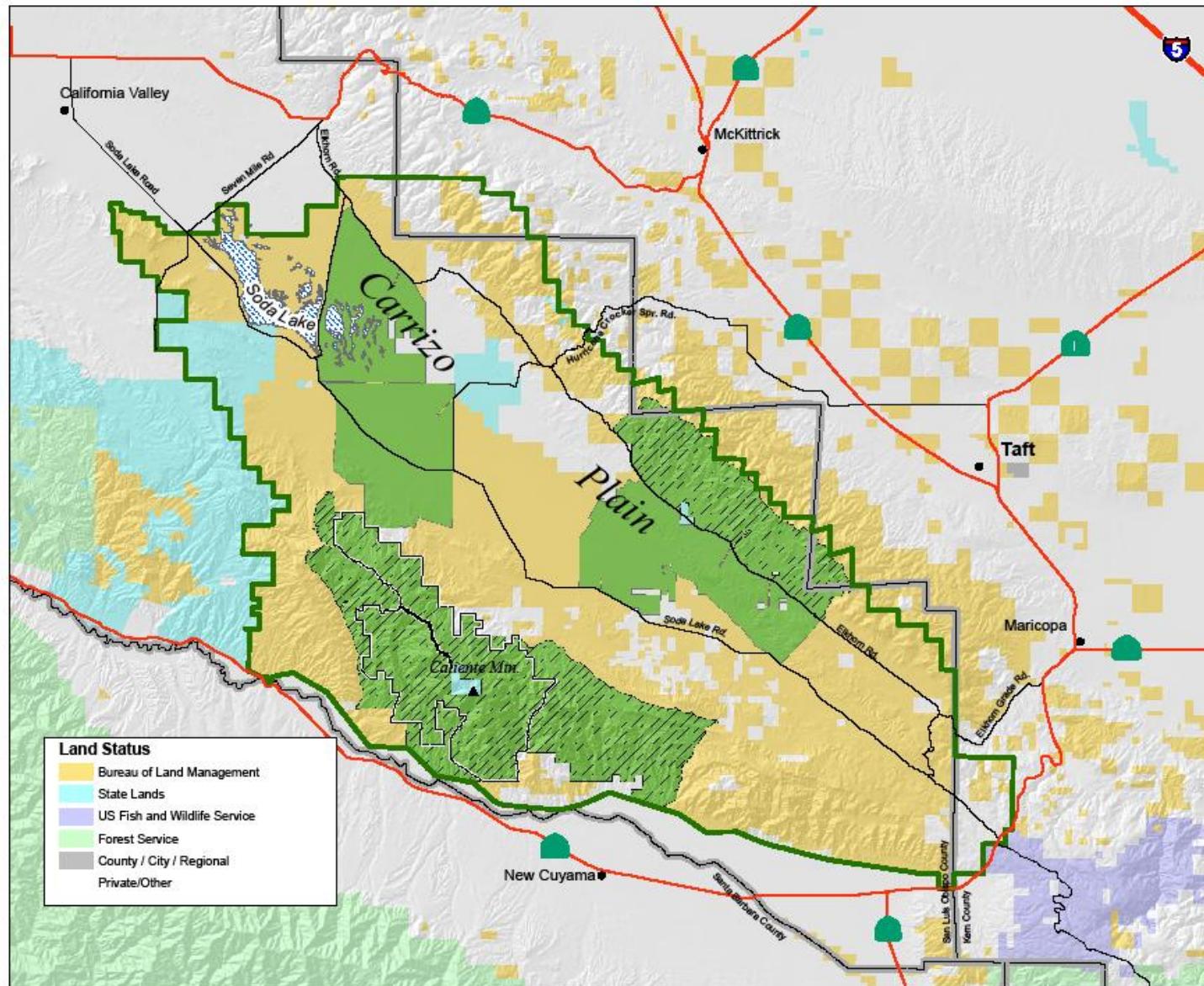
Wilderness Study Areas and Wilderness Characteristics

Areas with wilderness characteristics correspond to Primitive Recreation Management Zones.

Alt. 1	Alt.2 (preferred)	Alt. 3	Alt. 4 (no action)
Continue managing the existing Caliente Wilderness Study Area (WSA) to preserve wilderness characteristics.			
Primitive: 83,202 ac.	Primitive: 54,464 ac.	Primitive: 17,984 ac.	Same as Alt. 3



Wilderness Characteristics



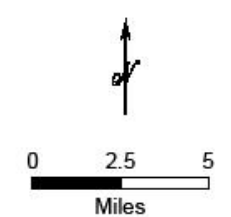
Land Status

- Bureau of Land Management
- State Lands
- US Fish and Wildlife Service
- Forest Service
- County / City / Regional
- Private/Other

Map 2-5
Lands Having Wilderness Characteristics
 Bureau of Land Management
 Bakersfield Field Office
 Carrizo Plain National Monument
 Resource Management Plan

Legend

- CPNM Boundary
- Alternative 1
- Alternative 2
- Alternative 3: Caliente Mtn. WSA



Recreation Management Zones

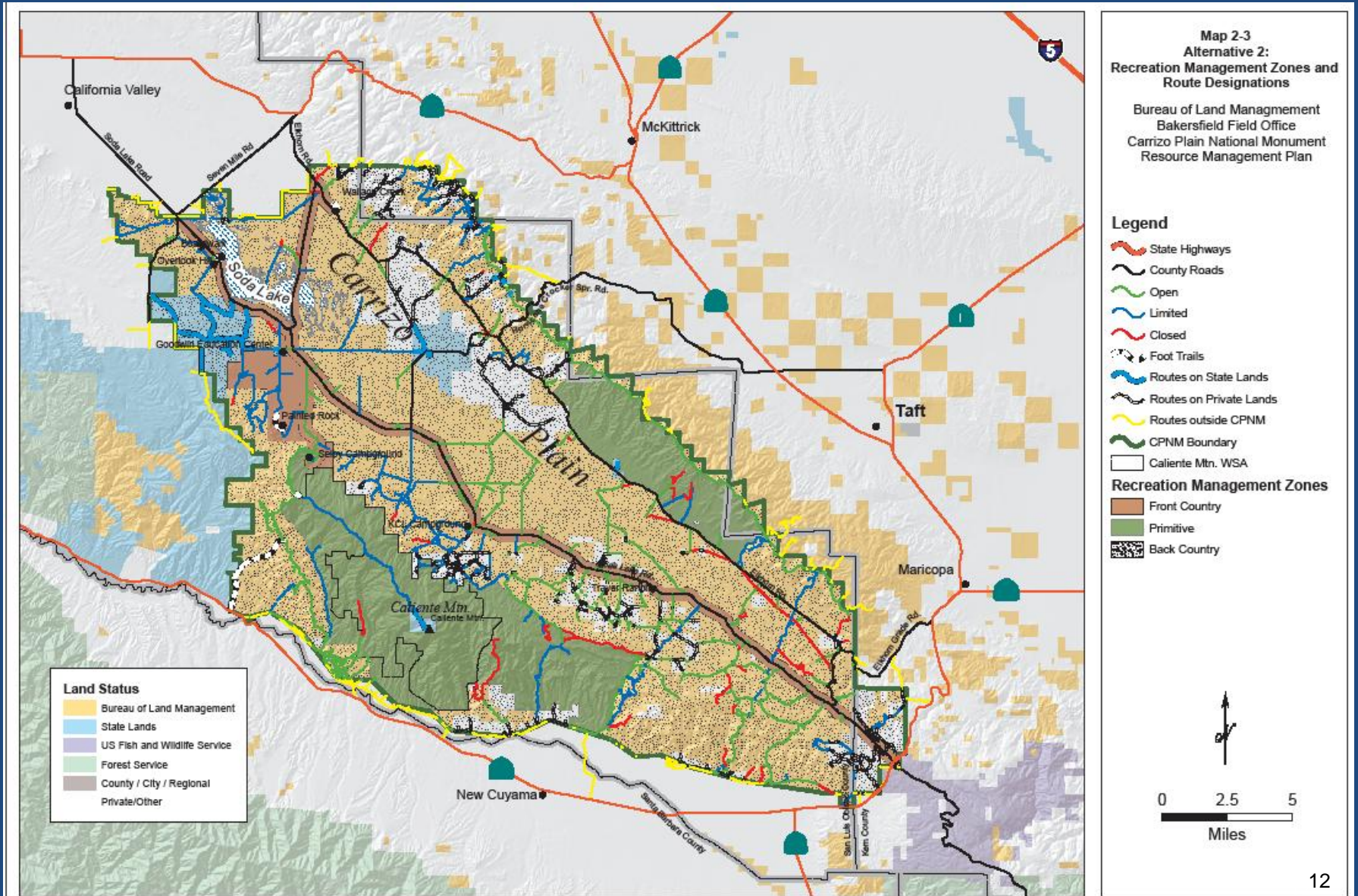
Primitive -- Manage for wilderness characteristics. Closed to vehicles.

Backcountry -- Manage for diverse uses.

Frontcountry --- Majority of the support and interpretive facilities.

Alt. 1	Alt.2 (preferred)	Alt. 3	Alt. 4 (no action)
Primitive: 83,202 acres Backcountry: 158,080 acres Frontcountry: 17,040 acres	Primitive: 54,464 acres Backcountry: 186,819 acres Frontcountry: 20,839 acres	Primitive: 17,984 acres Backcountry: 223,299 acres Frontcountry: 24,944 acres	--Manage as VRM II --Majority Temblor Mtn. Range manage VRM III --Portions of Monument Border manage VRM IV

Recreation Management Zones

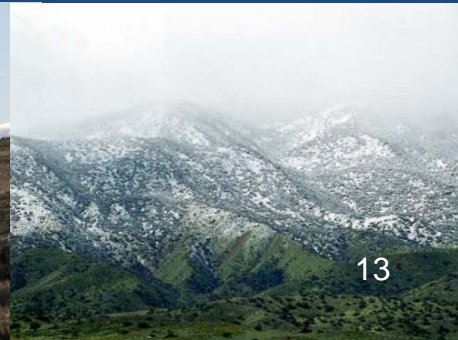


Travel Management (route designation)

Proclamation states no vehicle use off designated roads (no open areas).
 --Vehicle travel limited in Monument to designated routes only.

Road definitions: open= available to all vehicle types at all times
 limited= restrictions on type of vehicle or season of use
 closed= closed to all vehicles at all times

Alt. 1	Alt.2 (preferred)	Alt. 3	Alt. 4 (no action)
Open: 269 mi. Limited: 97 mi. Closed: 81 mi.	Open: 278 mi. Limited: 124 mi. Closed: 45 mi.	Open: 322 mi. Limited: 115 mi. Closed: 10 mi.	Same as Alt. 3

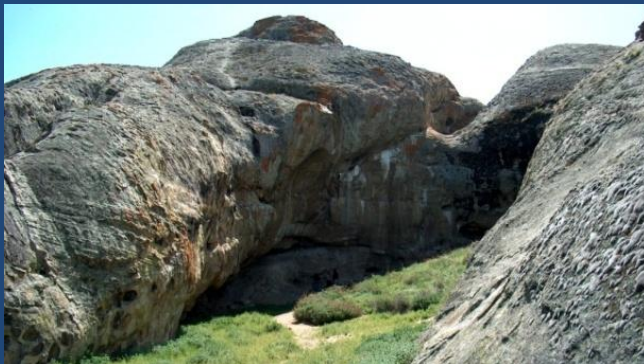


Cultural Resources

All Alternatives allow access for traditional Native Americans uses.
All Alternatives protect or stabilize or restore National Register Sites.

Manage Painted Rock as follows:

Alt. 1	Alt.2 (preferred)	Alt. 3	Alt. 4 (no action)
Close to public access.	Allow guided tours and self guided visitor access.	Allow guided tours only.	Allow public access July through February. Allow guided tours only March through June.





Biological Resources



All Alternatives use adaptive management, establish objectives for special status species, and maintain ecosystems and natural processes.

Alt. 1	Alt.2 (preferred)	Alt. 3	Alt. 4 (no action)
<p>Rely on natural processes to maintain ecologically important communities and populations</p>	<ul style="list-style-type: none"> --Establish objectives for special status species (including T&E) --Incorporate objectives for other native species (e.g., elk, pronghorn, native grasses, saltbush) --Maintain ecosystems and natural processes across the Monument (e.g., Soda Lake and vernal pools) --Use adaptive management 	<p>Similar to the preferred alternative with more emphasis on T&E species.</p>	<p>Similar to the preferred alternative but without designations of core areas.</p>

Livestock Grazing

Manage livestock grazing to meet or exceed the standards for rangeland health.

Manage livestock to meet, and to not be in conflict with, the management objectives for all other resources and programs in the Monument.

Alt. 1 (No Grazing)	Alt.2 (Preferred)	Alt. 3	Alt. 4 (No Action)
<p><u>Available for Grazing:</u> 4,600 acres.</p> <p><u>Unavailable for Grazing:</u> 201,900 acres.</p>	<p><u>Available for Grazing:</u> 173,400 acres.</p> <p><u>Unavailable for Grazing:</u> 33,100 acres.</p>		<p><u>Available for Grazing:</u> 167,100 acres.</p> <p><u>Unavailable for Grazing:</u> 39,400 acres.</p>

Minerals

Proclamation states that all lands are withdrawn from mineral entry.

All alternatives are similar:

- recognize valid existing rights (e.g., allow access to mineral estate while protecting Monument objectives)
- encourage lease holders to minimize visual and other impacts while developing leases
- apply best management practices (BMPs) and standard operating procedures (SOPs)
- site specific actions (e.g., exploration, geophysical survey, drilling) fall under separate environment analysis.

Federal mineral estate: 115,418 acres

Federal leased minerals: 1,675 acres

Mineral estates-private/other: 131,434 acres

In Summary

The Preferred Alternative:

Meets intent of the Proclamation

**Balances protection of Monument resources
while allowing for compatible public uses.**

**Addresses public concerns regarding grazing
and protection of biological and cultural
resources.**

Next Steps

- **Distribute Draft RMP – Jan. 23, 2009**
- **90-day public comment period Jan. 23-April 23, 2009**
- **Receive comments, complete comment analysis**
- **Prepare Proposed RMP/Final EIS Oct. 2009**
- **Protest period ends early Dec. 2009**
- **Protest Resolution Jan. - April 2010**
- **Sign ROD April 2010**
- **Implement Final RMP April 2010**