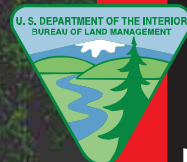


U.S. Department of the Interior
Bureau of Land Management

Resource Management Plans for California's Public Lands

BLM

California



2006

26 plans...

For the past five years, the Bureau of Land Management (BLM) has undertaken a major overhaul of its existing land use plans guiding management of public lands across California and northwestern Nevada.

This effort replaces outdated plans prepared in the 1970s and 80s with eight new resource management plans (RMPs) (Alturas, Eagle Lake, Surprise, Ukiah, Hollister, Sierra, Eastern San Diego County, Clear Creek), completes an RMP for each of three national monuments (California Coastal, Carrizo Plain, Santa Rosa-San Jacinto Mountains), two national conservation areas (King Range, Black Rock Desert-High Rock Canyon), the Headwaters Forest Reserve, and provides necessary refinements to the California Desert Conservation Area plan through six regional amendments (Coachella Valley, Imperial Sand Dunes, Northern and Eastern Colorado Desert, Northern and Eastern Mojave Desert, Western Colorado Desert, Western Mojave Desert).

Many of the plans are now completed, while some are still underway and should be completed soon.

As this new guidance is put in place for California's public lands, it is essential that the investment made by Congress, the BLM, and the many public land stakeholders moves forward through full implementation over the coming years. The partnerships and common goals created through the planning process provide great potential to improve the public lands and surrounding environments.

From outdoor recreation activities to threatened and endangered species habitat; from geothermal development to wilderness conservation; and, from fire protection to land access, the pages that follow describe these 26 resource management plans and regional amendments. The BLM thanks all of those dedicated to this vital effort and looks forward to continued support as each plan is implemented to realize the promise of California's public lands.

Surf's up: The King Range National Conservation Area was the BLM's first-ever NCA. BLM completed a new RMP in 2005.



The forest through the trees: The Headwaters RMP will continue to protect this stand of old-growth forest which offers shelter to wildlife species and solitude to visitors.



WORDS IN ACTION

Plan implementation is the path to realizing the promise of California's public lands.

northern california...

1. King Range National Conservation Area RMP

Recognized by Congress as one of America's last wild and undeveloped coastal landscapes, the King Range was designated as a national conservation area in 1970. The area encompasses 58,000 acres of public lands along the northern California coast, about 75 miles south of Eureka and 200 miles north of San Francisco.

ACECs: 2

Key Issues: Recreation and access, primitive character, and resource conservation.

Completed: May 2005

Contact: 707-986-5400

Website: www.blm.gov/ca/arcata/kingrange

2. Headwaters Forest Reserve RMP

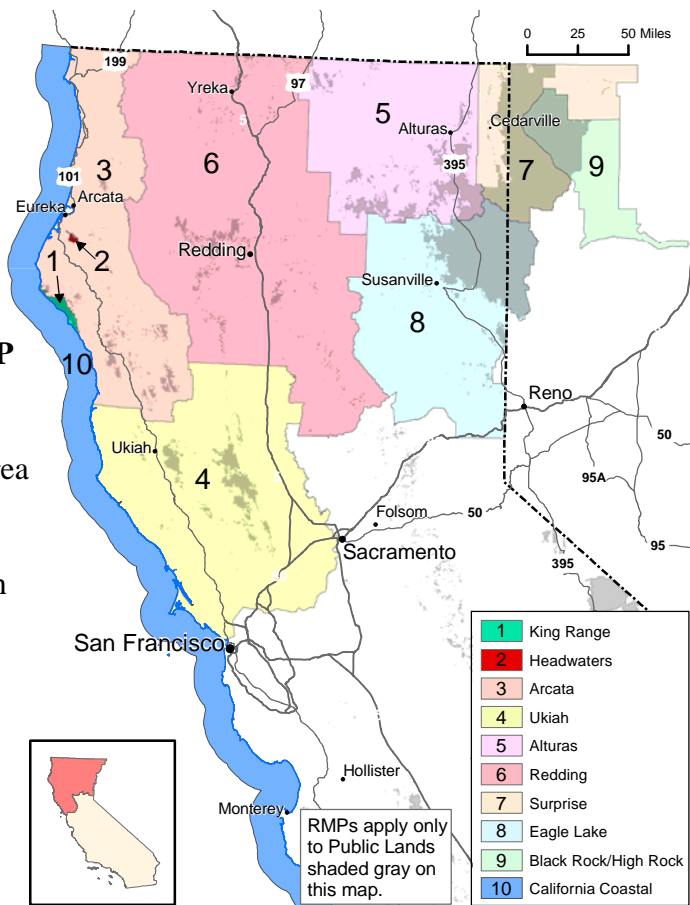
The Headwaters Forest Reserve includes 7,500 acres of public lands located six miles southeast of Eureka. Magnificent stands of fir and redwood old-growth forest reach toward the sky here and are protected, along with the reserve's ecological and wildlife features.

Key Issues: Recreation and access, wilderness, forest and watershed restoration, and endangered species habitat protection/restoration.

Completed: June 2004

Contact: 707-825-2300

Website: www.blm.gov/ca/arcata/headwaters



Map 1: Northern California Plans

3. Arcata RMP

The Arcata RMP provides management guidance for approximately 125,000 acres of public lands managed by the Arcata Field Office located in Humboldt, Mendocino, and Trinity counties. Other lands managed by the Arcata Field Office are addressed by the King Range and Headwaters Forest Reserve RMPs.

ACECs: 6

Key Issues: Recreation, land tenure, access, and forest management.

Completed: April 1992

Contact: 707-825-2300

Website: www.blm.gov/ca/arcata

PLANNING STATS:

Region:	Northern California
RMPs/Amendments:	9
Acres:	3.6 million
ACECs:	44



'Til the cows come home: With some of America's ranching families dating back five generations, BLM grazing permits and leases support more than 525,000 animal unit months statewide each year. RMPs designate lands available for grazing.



Steamed-up: The Ukiah RMP and others emphasize geothermal energy resources. Geothermal production from BLM public lands in California exceeds more than 4,100 gigawatt hours of energy annually.

4. Ukiah RMP

This 280,000-acre area contains the Clear Lake volcanic field, including the Geysers - the largest producing geothermal field in the world. Public lands in the planning area include a popular OHV area, some of the continent's oldest archaeological sites, and a herd of tule elk brought back from the brink of extinction. The RMP includes 1,100 public land acres on the scenic Mendocino coast.

Existing & Proposed ACECs: 10

Key Issues: Recreation, renewable energy development (wind and geothermal), habitat protection, and route designation.

Draft Completed: September 2005

Expected Final Completion: September 2006

Contact: 707-468-4000

Website: www.blm.gov/ca/ukiah/rmp

5. Alturas RMP

The Alturas RMP will provide direction for 503,000 acres of BLM-managed lands in northeastern California. The geographic area includes BLM managed public lands within Lassen, Modoc, Shasta, and Siskiyou counties. The RMP is being developed in coordination with the Eagle Lake and Surprise Field Office RMPs to ensure a consistent framework for managing public lands and resource uses.

Existing & Proposed ACECs: 7

Key Issues: Recreation, fire and fuels management, wildlife habitat, livestock grazing, renewable energy development (biomass and wind), areas of critical environmental concern, wild and scenic rivers, and travel management.

Draft Completed: April 2006

Expected Final Completion: July 2007

Contact: 530-233-4666

Website: www.blm.gov/ca/alturas

6. Redding RMP

The Redding RMP covers over 250,000 acres in north central California within Butte, Shasta, Siskiyou, Tehama, and Trinity counties. Many ACEC and National Wild and Scenic River corridors are included within these easily accessed and heavily used public lands.

ACECs: 9

Key Issues: Recreation, land tenure, access, and forest management.

Completed: June 1993

Contact: 530-224-2100

Website: www.blm.gov/ca/redding

7. Surprise RMP

Crossing the boundaries of two states, the Surprise RMP will provide management guidance for more than 1.2 million acres of BLM-managed lands in northeastern California and northwestern Nevada. The geographic area includes BLM public lands within California's Modoc and Lassen counties, and Nevada's Washoe and Humboldt counties. The Surprise draft RMP is being developed in coordination with the Alturas and Eagle Lake Field Office RMPs to provide a consistent approach for managing public lands and resource uses in northeast California and northwest Nevada.

Proposed ACECs: 3

Key Issues: Fire and fuels management, ACECs, wildlife habitat, livestock grazing, renewable energy development (biomass, wind and geothermal), and travel management.

Draft Completed: April 2006

Expected Final Completion: July 2007

Contact: 530-279-6101

Website: www.blm.gov/ca/surprise

8. Eagle Lake RMP

The Eagle Lake RMP will offer direction for over 1,022,000 acres of BLM public lands in both northeastern California and northwest Nevada. The geographic area includes BLM managed public lands within California's Lassen, Plumas, and Sierra counties, as well as Washoe County in Nevada. The Eagle Lake draft RMP is being put together in coordination with the Alturas and Surprise Field Office RMPs to provide a coordinated approach for managing public lands and resource uses in northeast California and northwest Nevada.

Proposed ACECs: 7

Key Issues: Recreation, fire and fuels management, wildlife habitat, livestock grazing, renewable energy development (biomass, wind and geothermal), ACECs, wild and scenic rivers, and travel management.

Draft Completed: April 2006

Expected Final Completion: July 2007

Contact: 530-252-5345

Website: www.blm.gov/ca/eaglelake

9. Black Rock Desert-High Rock Canyon Emigrant Trails National Conservation Area RMP

The RMP covers public lands in northwest Nevada administered by the California BLM Surprise and Nevada BLM Winnemucca field offices. The planning area includes 1,172,680 acres designated in the Black Rock Desert-High Rock Canyon Emigrant Trails NCA, of which 186,000 are managed by Surprise. Included are 10 wilderness areas and several other small areas adjoining the NCA boundary within Washoe, Pershing, and Humboldt counties, Nevada.

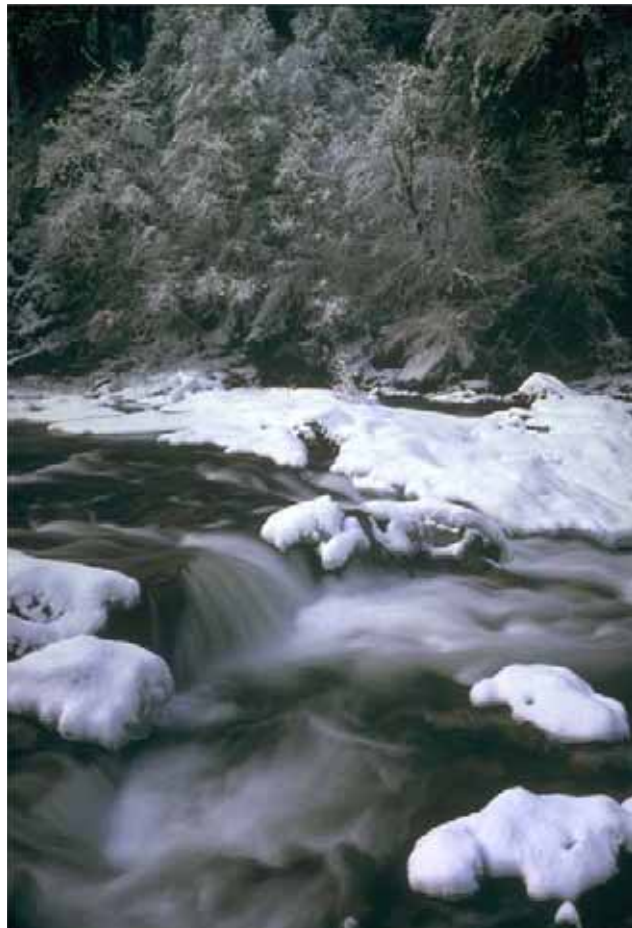
ACECs: 2

Key Issues: Geothermal leasing, OHV use, wildlife management, wilderness, cultural resources

Date Completed: July 2004

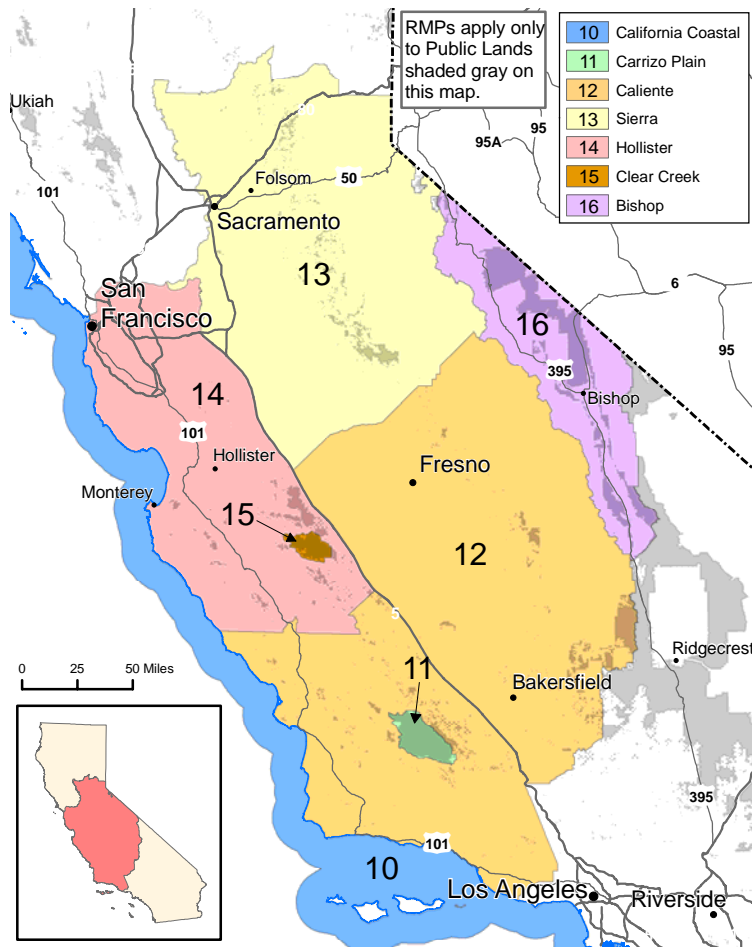
Contact: 530-279-6101

Website: www.blm.gov/ca/surprise/highrock.html



It's critical: RMPs establish 143 Areas of Critical Environmental Concern on public lands in California. These ACECs total more than 1.6 million acres. Pictured above is the Merced River ACEC.

central california...



Map 2: Central California Plans

11. Carrizo Plain National Monument RMP

Designated as a national monument in January 2001 to preserve its unique biological and cultural resources, the Carrizo Plain National Monument is a remnant of the San Joaquin Valley's prairie-like ecosystem. This vast region covers 205,000 acres of public lands in Kern and San Luis Obispo counties.

ACECs: 1

Key Issues: Native plant and animal species, cultural resources, wilderness, livestock grazing, and recreation.

Expected Completion: 2007

Contact: 661-391-6119

Website: www.blm.gov/ca/bakersfield/carrizoplain/carrizoplain.html

10. California Coastal National Monument RMP

The California Coastal National Monument is comprised of over 20,000 rocks and small islands along 1,100 miles of majestic California coastline. This national monument was established by presidential proclamation in 2000 to protect the natural and cultural resources of the rocks and islands.

ACECs: 1

Key Issues: Resource protection, jurisdictional coordination, and human uses and activities.

Completed: September 2005

Contact: 831-372-6105

Website: www.blm.gov/ca/pa/coastal_monument



Pump that jack: Making public lands available for oil and gas leasing is an important priority for the Hollister and Caliente RMPs.

12. Caliente RMP

Stretching across six California counties, the management of nearly 400,000 acres of public lands in the Central Valley are addressed by the Caliente RMP. Cared for by the Bakersfield Field Office, the lands are located in Kern, Kings, San Luis Obispo, Santa Barbara, Tulare, and Ventura counties. Recently acquired by BLM are the former DOE lands at NPR-2. ACECs: 15

Key Issues: Oil and gas leasing, land tenure and use authorizations, and livestock grazing.

Completed: May 1997; revision scheduled for 2007-2008

Contact: 661-391-6000

Website: www.blm.gov/ca/bakersfield/bkformp/rmpcontents.html

13. Sierra RMP

Located primarily in the foothills of the Sierra Nevada mountain range between Yuba and Mariposa Counties, 238,000 acres of public lands are managed by the Folsom Field Office. The Sierra RMP provides management direction for these lands, where unique resources include the Red Hills, Yuba Goldfields, oak woodlands, and wild & scenic river lands.

Existing & Proposed ACECs: 12

Key Issues: Recreation, habitat protection, wild and scenic rivers, and land tenure.

Draft Completed: September 2006

Expected Final Completion: September 2007

Contact: 916-985-4474

Website: www.blm.gov/ca/folsom

PLANNING STATS:

Region:	Central California
RMPs/Amendments:	7
Acres:	1.9 million
ACECs:	40

14. Hollister RMP

The Hollister RMP gives management guidance for approximately 220,000 acres of public lands located primarily in the Southern Diablo mountain range and the central coast area of California, including Fort Ord, Panoche Hills, and San Joaquin Valley.

Existing and Proposed ACECs: 3

Key Issues: Recreation, oil and gas, livestock grazing, habitat protection, and route designation.

Draft Completed: October 2005

Expected Final Completion: September 2006

Contact: 831-630-5000

Website: www.blm.gov/ca/hollister

Across the fields of gold: The BLM cares for more than 290,000 acres designated in three national monuments in California, including the Carrizo Plain National Monument, where a new RMP is underway.





Let it snow, let it snow, let it snow: Snow skiing is a popular activity on BLM lands during the winter months. When the snow melts, recreationists trade in their skis for hiking boots. Above is the eastern Sierra managed by BLM's Bishop field office.

15. Clear Creek Management Area RMP

Featuring the San Benito Mountain Research Natural Area, as well as recreation opportunities, the Clear Creek Management Area Plan covers 63,000 acres of public lands located in San Benito and Fresno counties. Also found here is Serpentine ACEC. The future planning will consider ways to best protect public land health.

ACECs: 2

Key Issues: Motorized recreation, endangered species habitat protection, and naturally occurring asbestos.

Completed: Route designation amendment completed January 2006

Contact: 831-630-5000

Website: www.blm.gov/ca/hollister

16. Bishop RMP

The Bishop RMP provides planning direction for the future use of 750,000 acres of public lands in the eastern Sierra region of Inyo and Mono counties. This countryside boasts six ACECs, including Fish Slough, Bodie Bowl, Travertine Hot Springs, and Crater Mountain.

ACECs: 6

Key Issues: recreation, wildlife habitat, minerals, land tenure adjustment.

Completed: April 1993

Contact: 760-872-5000

Website: www.blm.gov/ca/bishop

Float your boat: There are 78 miles of designated wild and scenic rivers splashing across nearly 25,000 acres of BLM public lands in California.



southern california...

17. California Desert Conservation Area Plan

Approved in 1980, the CDCA plan was prepared to meet congressional direction set out by the Federal Land Policy and Management Act. The plan continues to provide an effective multiple use management blue print for the daunting 25 million acres, nearly half in BLM jurisdiction, encompassing the conservation area in the counties of Imperial, Inyo, Kern, Los Angeles, Mono, Riverside, and San Bernardino.

ACECs: 72

Key Issues: Cultural resources, Native American values, wildlife, vegetation, wilderness, wild horses and burros, livestock grazing, recreation, motorized vehicle access, geology, minerals, energy production and utility corridors, and land tenure adjustment.

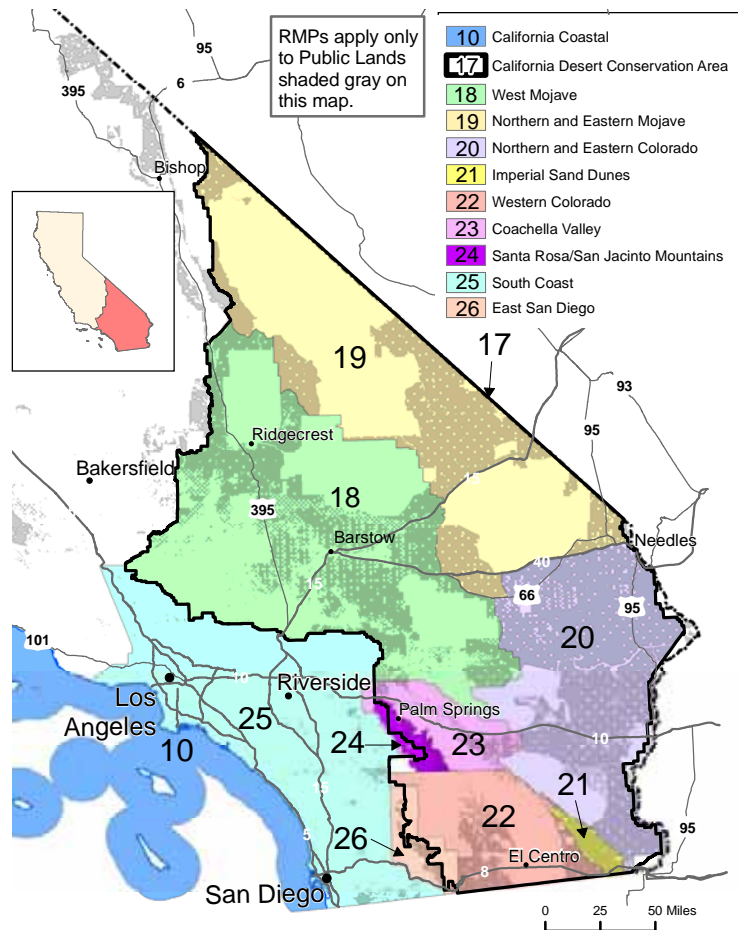
Completed: December 1980

Contact: 951-697-5200

Website: www.blm.gov/ca/cdd

18. West Mojave Desert/CDCA Plan Amendment

Completion of the West Mojave plan comes near the end of an extensive decade-long public planning process. While the record of decision applies only to 3.3 million acres of BLM-managed lands, it will begin the separate approval process by the U.S.



Map 3: Southern California Plans

Fish and Wildlife Service and the California Department of Fish and Game with cooperating cities and counties to approve the habitat conservation plan (HCP) encompassing 9.3 million acres in Inyo, Kern, Los Angeles, and San Bernardino counties. With such famous inhabitants as the desert tortoise and Mohave ground squirrel, no area is too small when it comes to providing for future management. The plan amendment and the HCP will conserve and protect more than 100 listed or sensitive wildlife species and their habitats.

New/modified ACECs: 14

Key Issues: Conservation area adjustments, standards and guidelines for land health, BLM route designation, and establishment of desert wildlife management areas for the desert tortoise.

Completed: March 2006

Contact: 951-697-5200

Website: www.blm.gov/ca/cdd/wemo.html

PLANNING STATS:

Region:	Southern California
RMPs/Amendments:	10
Acres:	12.2 million
ACECs:	102

19. Northern and Eastern Mojave Desert/ CDCA Plan Amendment

This regional amendment for a seemingly endless 2.7 million acres outlines the conservation strategy to manage sensitive species and habitats on public lands within Inyo, Mono and San Bernardino counties.

New/modified ACECs: 5

Key Issues: Standards and guidelines for land health, establishment of desert wildlife management areas for the desert tortoise, ACECs and strategies for other listed and sensitive species, designation of routes of travel, wild and scenic rivers and land acquisition priorities.

Completed: December 2002

Contact: 951-697-5200

Website: www.blm.gov/ca/cdd/nemo

20. Northern and Eastern Colorado Desert/ CDCA Plan Amendment

Conservation management for this vast 3.8 million-acre desert ecosystem is key to this regional amendment, which provides aid in the recovery of the desert tortoise and the Coachella Valley milk-vetch. The plan amendment also focuses on conservation of approximately 60 other sensitive species and their habitats on federal lands within Imperial, Riverside and San Bernardino counties, as well as a streamline process for the issuance of land use permits.

New/modified ACECs: 2

Key Issues: Standards and guidelines for land health, desert wildlife management areas for the desert tortoise, wildlife management areas for bighorn sheep and other species, designation of routes of travel, and land acquisition priorities.

Completed: December 2002

Contact: 951-697-5200

Website: www.blm.gov/ca/cdd/neco

21. Imperial Sand Dunes Recreation Area Management Plan/CDCA Plan Amendment

The Algodones Dunes and its neighboring lands provide a world-class off-highway vehicle adventure. The Recreation Area Management Plan for this 160,000-acre Imperial County region contains new adaptive management measures, vehicle designations, visitor facilities, and management prescriptions to accommodate the approximately 1.2 million visits annually, while protecting federally listed Pierson's milk-vetch and other sensitive plant and animal species.

ACECs: 7

Key Issues: Recreation and OHV use, facility development and access, sensitive plant and species, and law enforcement.

Completed: March 2005

Contact: 760-337-4400

Website: www.blm.gov/ca/elcentro

22. Western Colorado Desert/ CDCA Plan Amendment

With over 2,300 miles of off-highway vehicle routes, this 475,000-acre region is truly one-of-a-kind within the United States. The public lands here lie within Imperial and San Diego counties. The Western Colorado Desert plan amendment provides a balance for the protection of natural resources while offering off-highway vehicle enthusiasts an amazing outdoor adventure.

Key issues: Designation of routes of travel, cultural resources, and sensitive plants and animals.

Completed: January 2003

Contact: 760-337-4400

Website: www.blm.gov/ca/elcentro/weco.html

Born to be wild: RMPs include more than 3.5 million acres of BLM public lands designated as wilderness.



23. Coachella Valley/CDCA Plan Amendment

With more than 500,000 new residents to California each year, southern California's Coachella Valley is a rapidly urbanizing region within Riverside County. This regional amendment for 331,000 public land acres was developed in conjunction with the Coachella Valley Multi-Species Habitat Conservation Plan addressing 27 plant and animal species, 10 federally listed.

ACECs: 7

Key Issues: Habitat conservation, wild and scenic river eligibility, standards and guidelines for land health, designation of routes of travel, criteria for land tenure adjustment, and establishment of a special recreation management area.

Completed: December 2002

Contact: 760-251-4800

Website: www.blm.gov/ca/palmsprings

24. Santa Rosa and San Jacinto Mountains National Monument Management Plan

Designated by Congress in October 2000, the Santa Rosa and San Jacinto Mountains National Monument comprises 150,000 acres of public lands in Riverside County. The BLM co-manages this majestic desert setting with the U.S. Forest Service and partners with other state agencies, local governments and Indian tribes, including the Agua Caliente Band of Cahuilla Indians.

Key Issues: Cultural resources and Native American values, recreation, visual resources, and sensitive plants and animals.

Completed: October 2003

Contact: 760-251-4800

Website: www.blm.gov/ca/palmsprings/santarosa/santa_rosa_national_monument.html

Slow and steady wins the race: CDCA plan amendments provide conservation strategies for the desert tortoise and a careful balance of land uses.



Rev it up: Managing OHVs in the Imperial Sand Dunes and other public land areas is a key RMP issue.

25. South Coast RMP

With nearly half of California's population, or almost 18 million people, living in southern California, planning for public lands in the south half of the state is critical. The South Coast RMP provides direction for 129,000 acres of public lands in the highly urbanized coastal regions of Los Angeles, Orange, Riverside, San Bernardino and San Diego counties.

ACECs: 7

Key Issues: Land tenure adjustment, special status endangered species, open space, recreation/public access, and mineral exploration and development

Completed: June 1994; revision scheduled for 2007-2008

Contact: 951-697-5200

Website: www.blm.gov/ca/palmsprings

26. Eastern San Diego County RMP

Recognized by scientists as a transitional zone are nearly 100,000 acres of public lands in California sitting between the California Peninsular Ranges and the Colorado Desert ecosystem. The Eastern San Diego County RMP addresses the resource concerns within this expanse.

ACECs: 2

Key Issues: Wind energy, recreation, sensitive plant and animal species, fire and fuels, riparian and water resources, cultural resources, and wilderness.

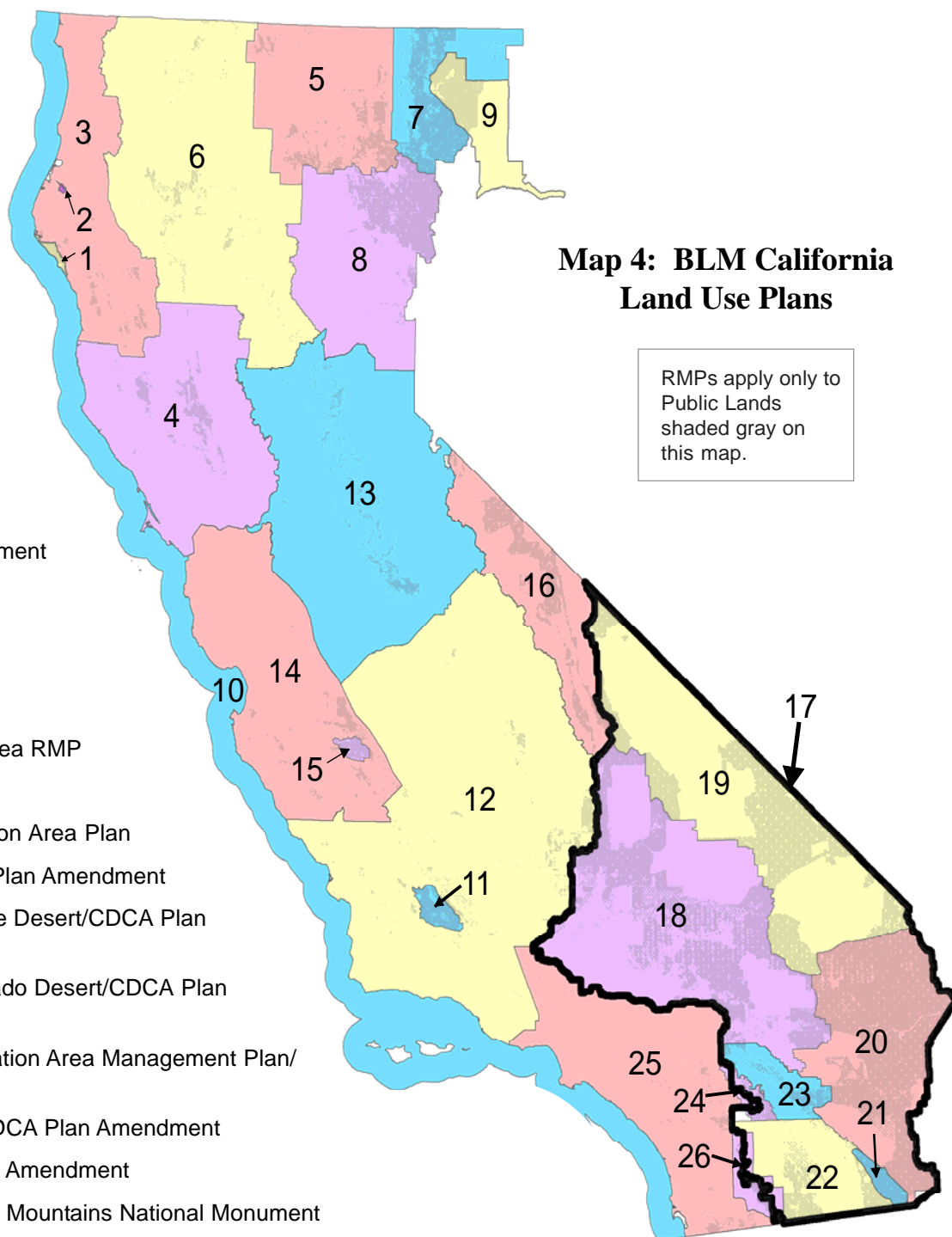
Expected Completion: 2007

Contact: 760-337-4400

Website: www.blm.gov/ca/elcentro/ESDRMP.html

LEGEND

1. King Range National Conservation Area RMP
2. Headwaters Forest Reserve RMP
3. Arcata RMP
4. Ukiah RMP
5. Alturas RMP
6. Redding RMP
7. Surprise RMP
8. Eagle Lake RMP
9. Black Rock Desert-High Rock Canyon Emigrant Trails National Conservation Area RMP
10. California Coastal National Monument RMP
11. Carrizo Plain National Monument RMP
12. Caliente RMP
13. Sierra RMP
14. Hollister RMP
15. Clear Creek Management Area RMP
16. Bishop RMP
17. California Desert Conservation Area Plan
18. West Mojave Desert/CDCA Plan Amendment
19. Northern and Eastern Mojave Desert/CDCA Plan Amendment
20. Northern and Eastern Colorado Desert/CDCA Plan Amendment
21. Imperial Sand Dunes Recreation Area Management Plan/ CDCA Plan Amendment
22. Western Colorado Desert/CDCA Plan Amendment
23. Coachella Valley/CDCA Plan Amendment
24. Santa Rosa and San Jacinto Mountains National Monument Management Plan
25. South Coast RMP
26. Eastern San Diego County RMP



Map 4: BLM California Land Use Plans

RMPs apply only to Public Lands shaded gray on this map.

TO PUT IT IN PERSPECTIVE
 The public land area covered by BLM California's RMPs is greater than the combined land area of four New England States: Connecticut, Massachusetts, New Hampshire, and Rhode Island.

**U.S. Department of the Interior
 Bureau of Land Management**
 California State Office
 2800 Cottage Way, Suite W-1834
 Sacramento, California 95825-1886
 916-978-4400
www.blm.gov/ca