

Welcome



While here, you will experience one of Wyoming's most renowned blue ribbon trout fisheries. The cold water of the North Platte River supports an abundance of rainbow, brown and cutthroat trout. Anglers relish the cool mornings, relatively uncrowded water, and ambient breezes of this central Wyoming waterway.

Bureau of Land Management
 Casper Field Office
 2987 Prospector Drive
 Casper, WY 82604-2968
 (307) 261-7600
www.blm.gov/wy

Wyoming Game and Fish Department
 Casper Regional Office
 3030 Energy Lane, Suite 100
 Casper, WY 82604-2922
 (307) 473-3400
gf.state.wy.us



Public Access

Access to public lands may be obtained only on public roads or on routes having public easements. All public lands intersected by public roads may be used by the general public free-of-charge. You can use public land surrounded by private lands if you obtain permission from the landowner, use a public road or float the river. It is important to determine the availability of access to lands intended for use well in advance of your outing.

The Wyoming Game and Fish Department has a Walk-In Area access program, which provides additional access opportunities on the river. For information on the areas, consult the current Walk-In Area Fishing Atlas or the Game and Fish website at: <http://gf.state.wy.us/wildlife/access/plpw/index.asp>.

Private landowners own the streambed on their property. Wading, anchoring and beaching are prohibited on private land without prior permission. It is your responsibility to determine private and public land boundaries.

Blue and **Red** signs are located on the river bank. When approaching a sign, **RED** indicates entering private land, **BLUE** indicates entering public land.



BLUE signs indicate public access. **RED** signs indicate private lands.

Site Facilities

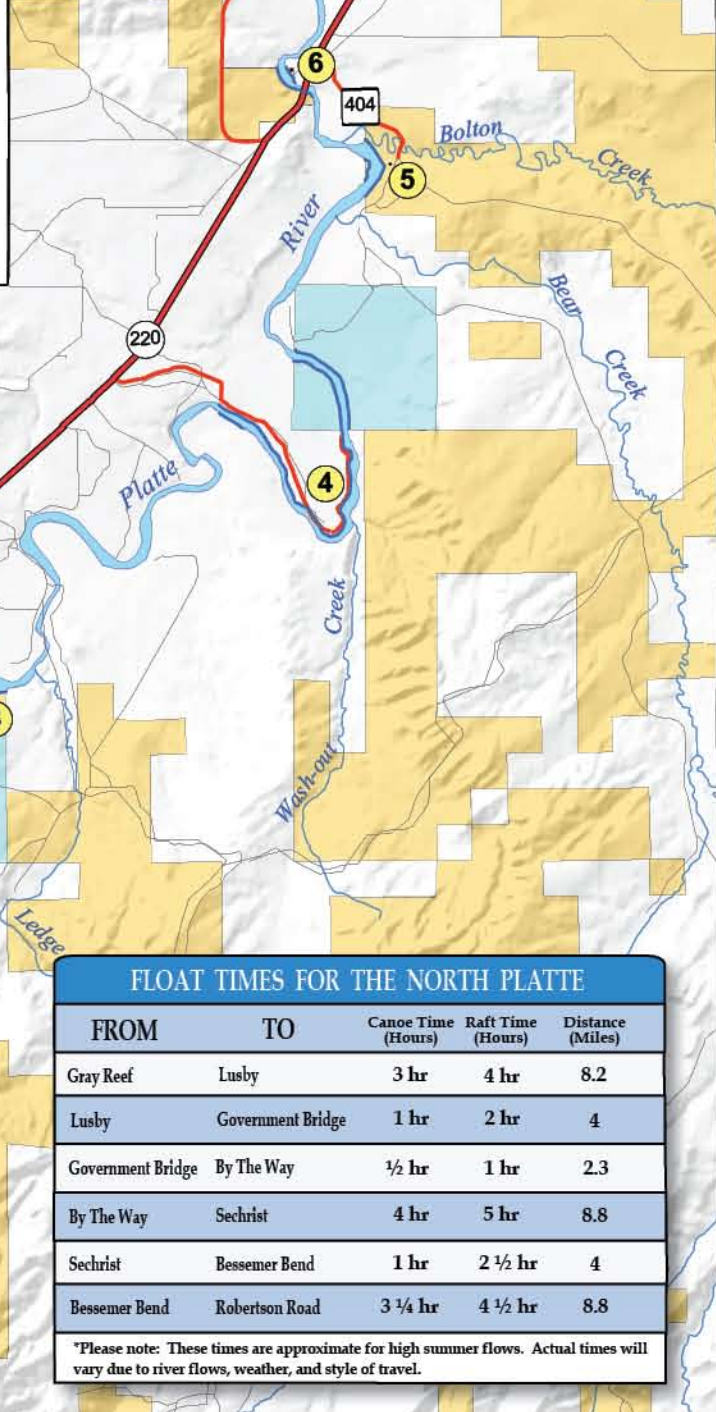
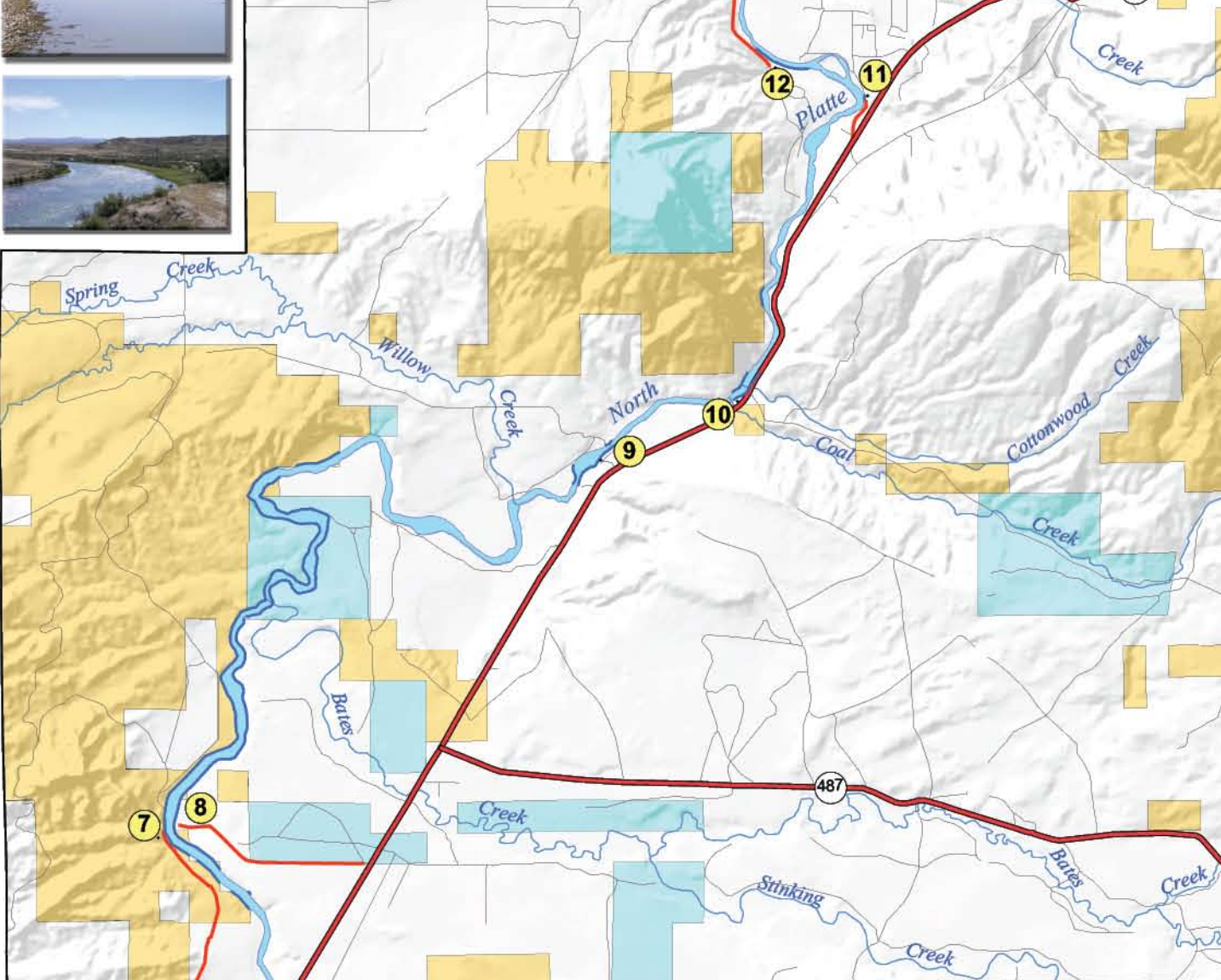
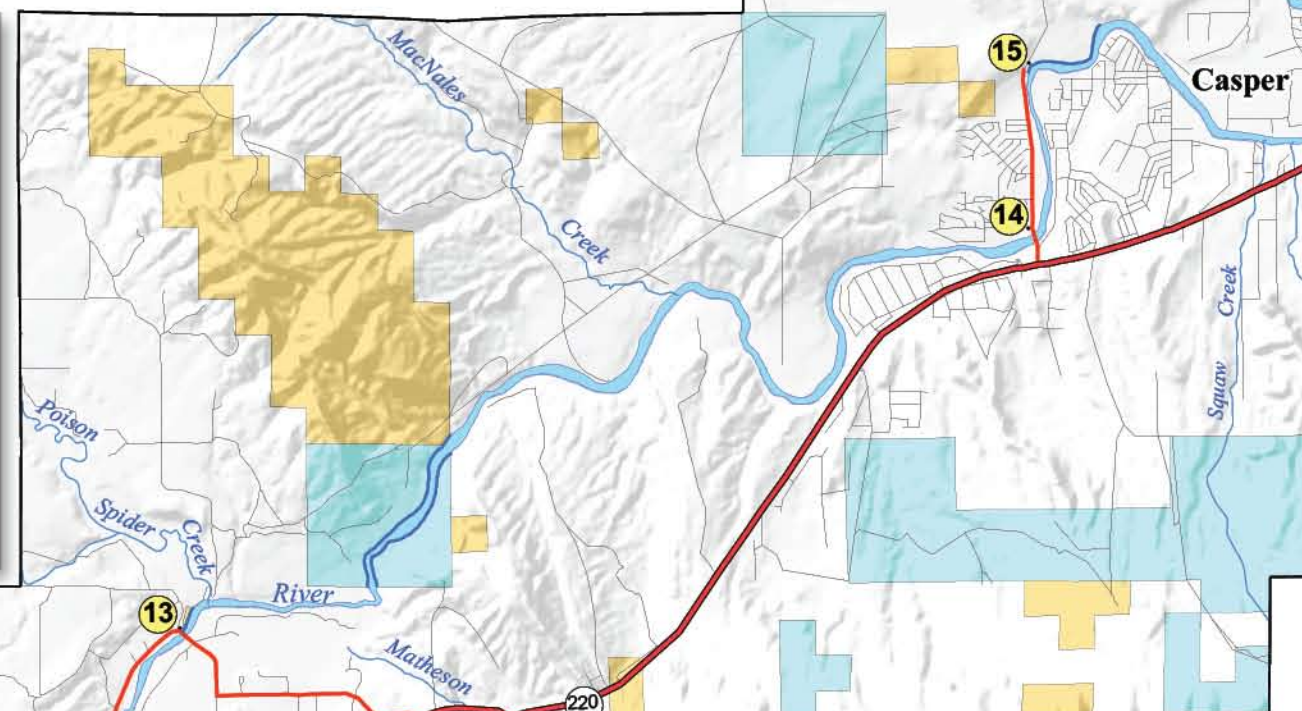
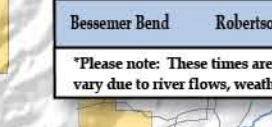
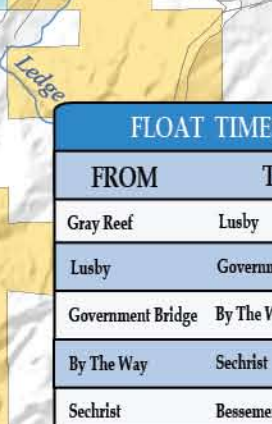
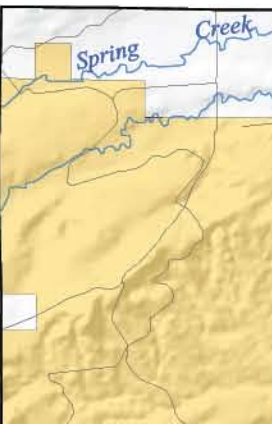
- 1 Gray Reef Access Area
- 2 Trapper's Route #1
- 3 Ledge Creek
- 4 Lusby Public Fishing Area
- 5 Bolton Creek
- 6 Government Bridge / Mile's Landing
- 7 Clarkson Hill
- 8 By-the-Way Ranch Public Fishing Area
- 9 Sechrist Public Fishing Area
- 10 Schmitt Public Access Area
- 11 Hartnet Public Access Area
- 12 Wyoming Flycasters Memorial Access Area
- 13 Speck / Bessemer Bend Public Fishing Area
- 14 Robertson Road Public Fishing Area
- 15 Paradise Valley Access Area

Surface Ownership

- Bureau of Land Management
- Bureau of Reclamation
- Private
- State

Facility Symbols

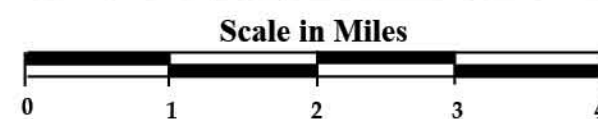
- Camping Allowed
- Public Fishing Area
- Boat Ramp
- Public Restroom
- Interpretive Historical Marker
- Public Access Area
- Public Access Road



Before you go ...

Life is filled with the unexpected. To ensure a safe and enjoyable outdoor experience, careful planning is essential. The following suggestions may be helpful:

1. Plan ahead and provide someone with an itinerary of your trip.
2. Make sure you dress adequately. The weather in Wyoming can vary widely on any given day.
3. Bring high energy food i.e., protein bars, granola, beef jerky.
4. Take extra drinking water.
5. Carry tools and extra fuel for your vehicle and make sure your spare tire is in good condition.
6. Take along a first aid kit.
7. If you're boating, follow Wyoming Watercraft Regulations, avoid the use of alcohol, and watch for changing weather conditions.



Camping along the North Platte

Developed campgrounds along the stretch from Alcova to Casper are limited. Gray Reef and Trapper's Route #1 are the only landings with both restroom facilities and designated campsites. Primitive camping opportunities are available at the remaining BLM administered landings. There is no camping on State land without the lessee's permission. Camping is limited to 14 days.

Camping provides the opportunity to get away from it all and builds family traditions. Help to preserve the natural beauty of this area for yourself and generations to come by camping responsibly. Park only in designated parking areas.

1. Whenever possible, use existing campsites. Camp on durable surfaces and place tents on a non-vegetated area. Do not dig trenches around tents.
2. Camp at least 200 feet from water.
3. For cooking, use a campstove. They are always preferred to campfires because of the impact on the land.
4. Observe all fire restrictions. For campfires, use only fallen timber. Gather firewood well away from camp. Never cut standing trees.
5. Do not wash in the river. Detergents, toothpaste, and soap harm fish and other aquatic life. Scatter wash water 200 feet from the water's edge so that it filters through the soil.
6. In areas without toilets, bury human waste. Human waste should be disposed of in a shallow hole (6"-8" deep) at least 200 feet from water.

License Requirements

A fishing license is required for an angler 14 years or older. Licenses are available at numerous locations in the area where fishing tackle is sold. Fishing regulations vary along this stretch of the river. Check the current Wyoming Game and Fish Commission Fishing Regulations and if you have questions, contact the Wyoming Game and Fish Department at (307) 473-3400 or within Wyoming (800) 233-8544. Remember, it is your responsibility to know the fishing regulations.

FLOAT TIMES FOR THE NORTH PLATTE				
FROM	TO	Canoe Time (Hours)	Raft Time (Hours)	Distance (Miles)
Gray Reef	Lusby	3 hr	4 hr	8.2
Lusby	Government Bridge	1 hr	2 hr	4
Government Bridge	By The Way	½ hr	1 hr	2.3
By The Way	Sechrist	4 hr	5 hr	8.8
Sechrist	Bessemer Bend	1 hr	2 ½ hr	4
Bessemer Bend	Robertson Road	3 ¼ hr	4 ½ hr	8.8

*Please note: These times are approximate for high summer flows. Actual times will vary due to river flows, weather, and style of travel.

All BLM photographs taken along the river route between Grey Reef and Bessemer Mountain.

