

**Figures**

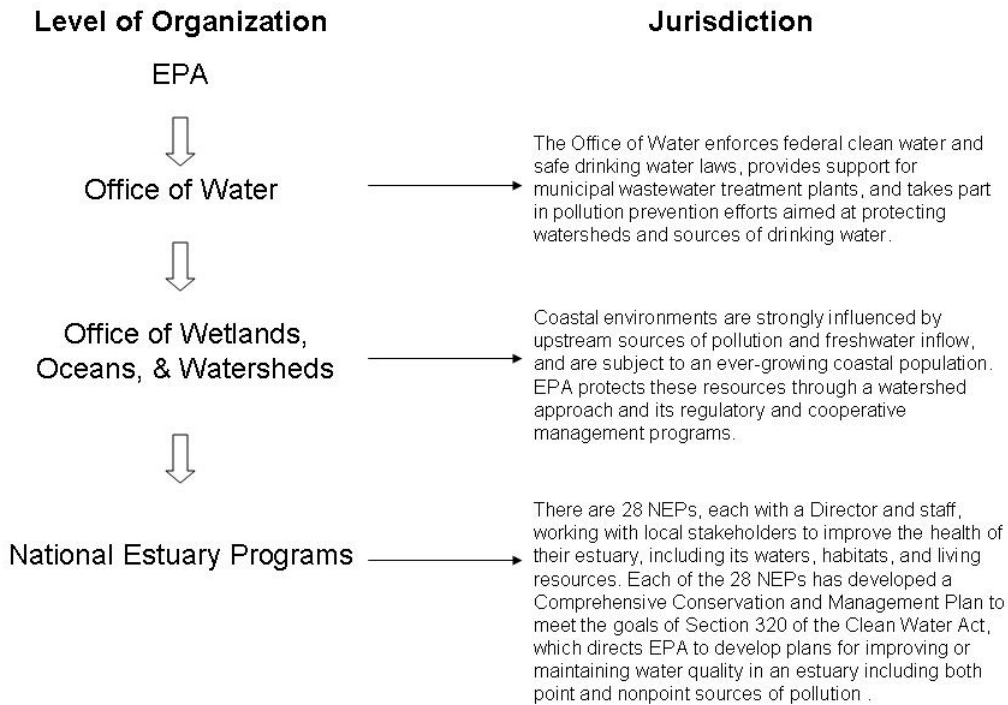
**Figures**

1  
2  
3  
4  
5  
6  
7  
8  
9  
10  
11  
12  
13  
14  
15  
16  
17  
18  
19  
20  
21  
22  
23  
24  
25  
26  
27  
28  
29

**NOTE: This information is distributed solely for the purpose of pre-dissemination peer review under applicable information quality guidelines. It has not been formally disseminated by the U.S. Environmental Protection Agency. It does not represent and should not be construed to represent any agency determination or policy.**

1 **Figures for Chapter 7, National Estuaries**

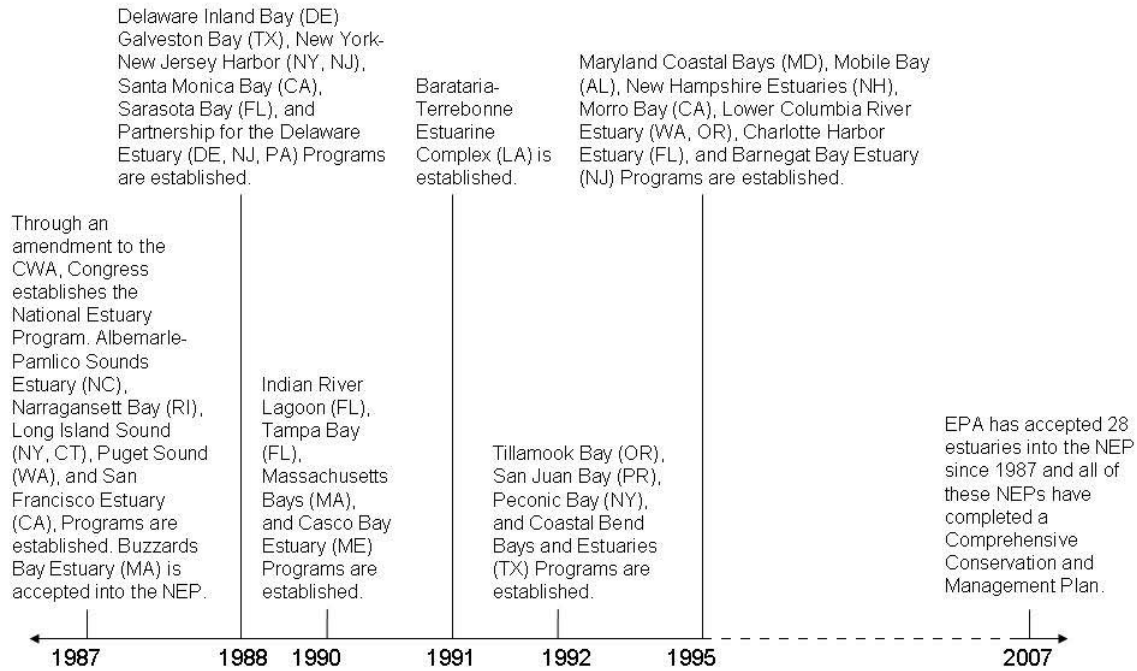
2 **Figure 7.1.** Organization of the NEP system (U.S. Environmental Protection Agency, 2007b).



Adapted from [http://www.epa.gov/water/org\\_chart/index.htm#](http://www.epa.gov/water/org_chart/index.htm#)

3  
4

1 **Figure 7.2.** Timeline of National Estuaries Program formation (U.S. Environmental Protection  
 2 Agency, 2007a).



3

- 1 **Figure 7.3.** The Albermarle-Pamlico National Estuary Program region (Albermarle-Pamlico National Estuary Program, 2007).
- 2

## ALBEMARLE-PAMLICO NATIONAL ESTUARY PROGRAM REGION



- 1 - Chowan River Basin
- 2 - Roanoke River Basin
- 3 - Currituck Sound & Pasquotank River/Albemarle Sound Drainage Basin
- 4 - Tar-Pamlico River & Pamlico Sound Drainage Basin
- 5 - Neuse River Basin & Core Sound/Bogue Sound Drainage Basin



- 3 Map prepared April 30, 1999 by the NC Center for Geographic Information & Analysis

- 1 **Figure 7.4.** Feedbacks between nutrient and sediment exchange and primary production in the
- 2 benthos and water column. A plus symbol indicates enhancement and a minus symbol
- 3 suppression.

4

