

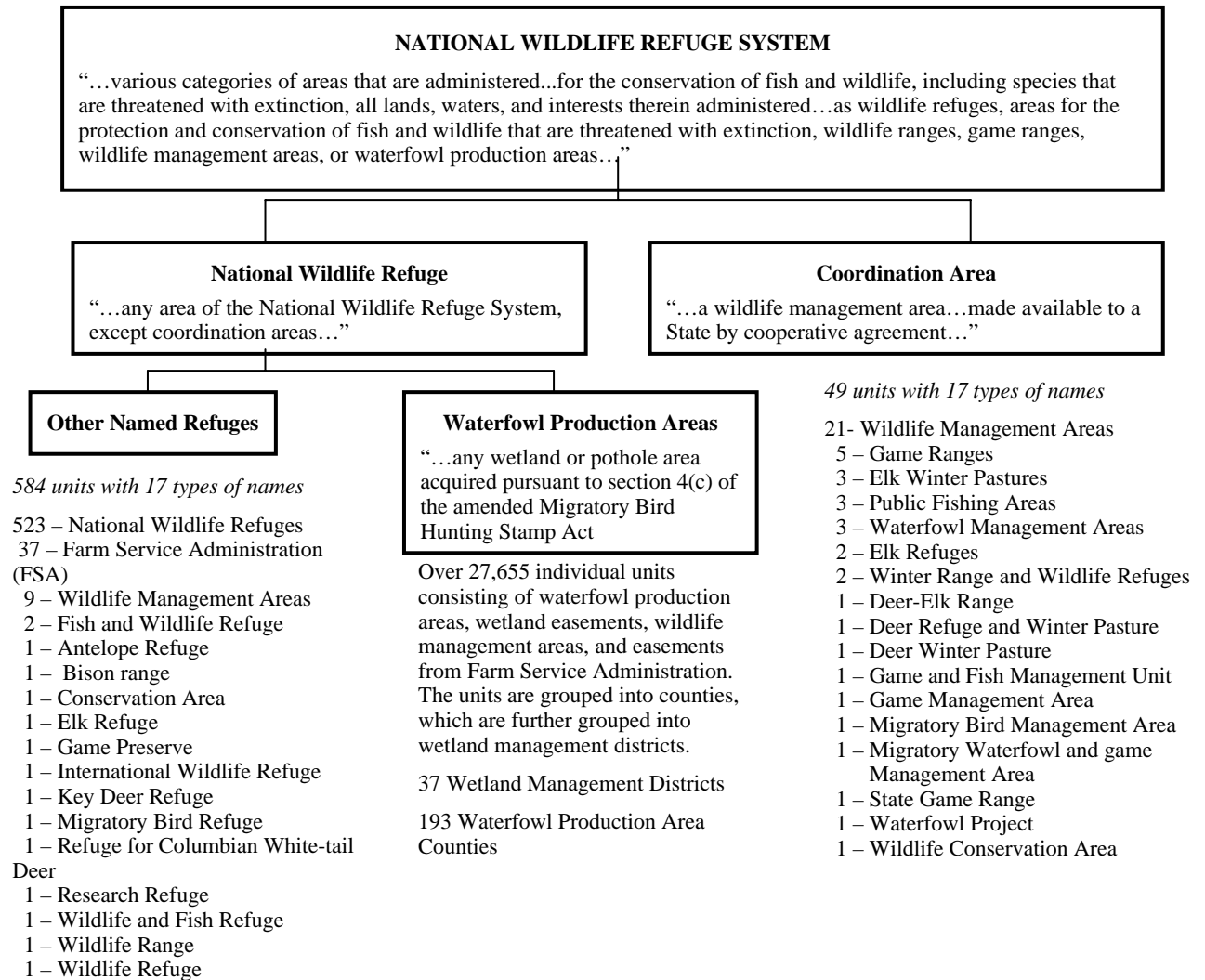
# Figures

1  
2  
3  
4  
5  
6  
7  
8  
9  
10  
11  
12  
13  
14  
15  
16  
17  
18  
19  
20  
21  
22  
23  
24  
25  
26  
27  
28  
29  
30

**NOTE: This information is distributed solely for the purpose of pre-dissemination peer review under applicable information quality guidelines. It has not been formally disseminated by the U.S. Environmental Protection Agency. It does not represent and should not be construed to represent any agency determination or policy.**

1 **Figures for Chapter 5, National Wildlife Refuges**

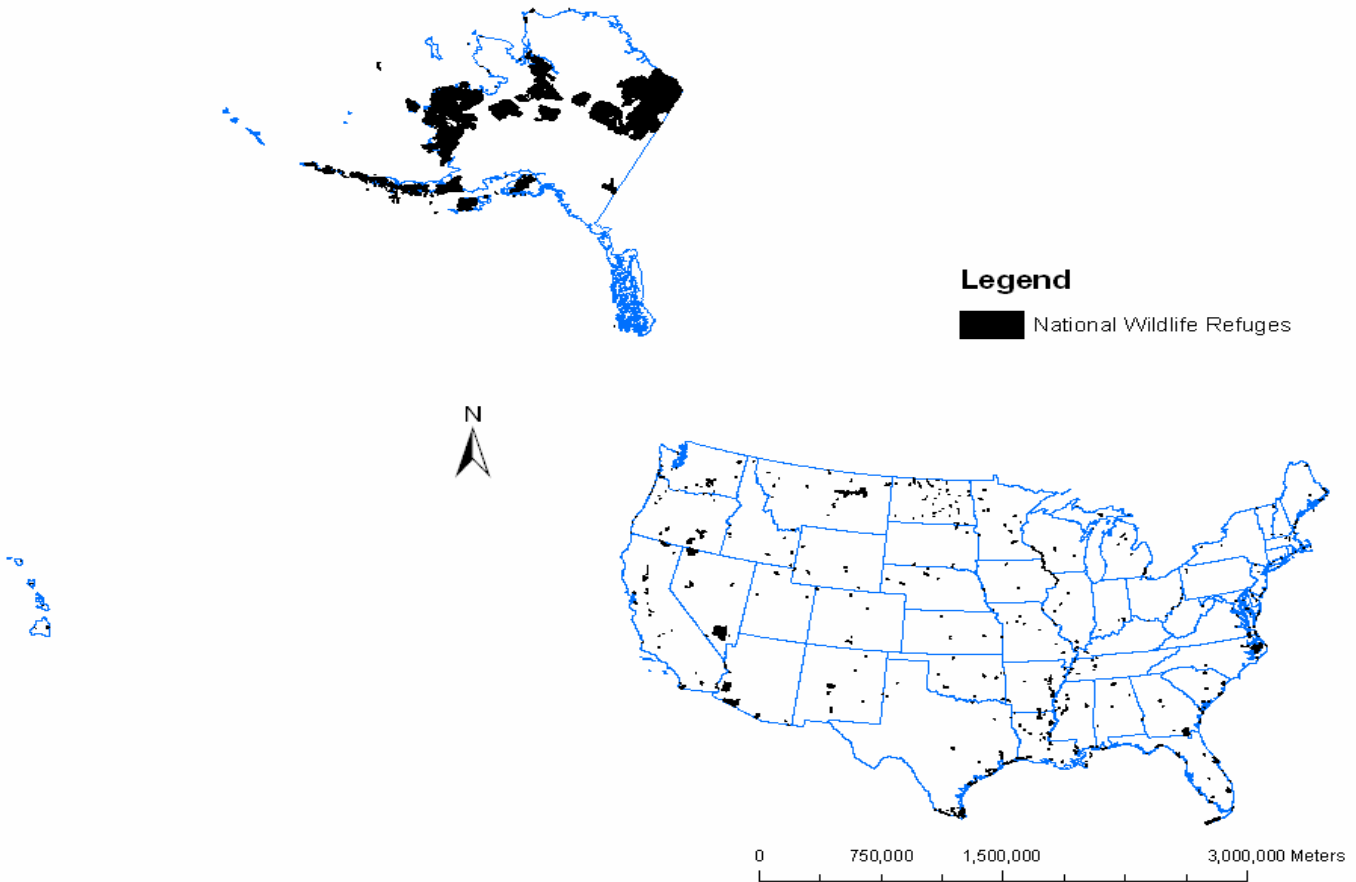
2 **Figure 5.1.** Structure of the NWRS. Adapted from Fischman (2003), Refuge  
 3 Administration Act (1966), and FWS Regulations – CFR 50.  
 4



5  
6

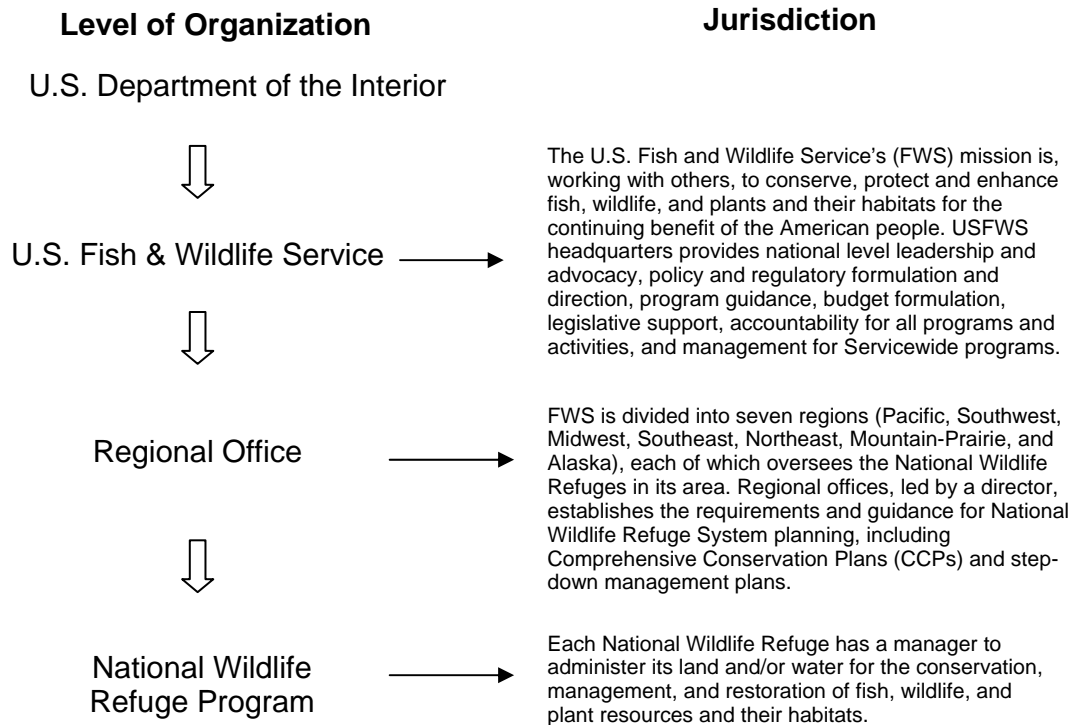
1 **Figure 5.2.** The National Wildlife Refuge System. Adapted from Pidgorna (2007).

2



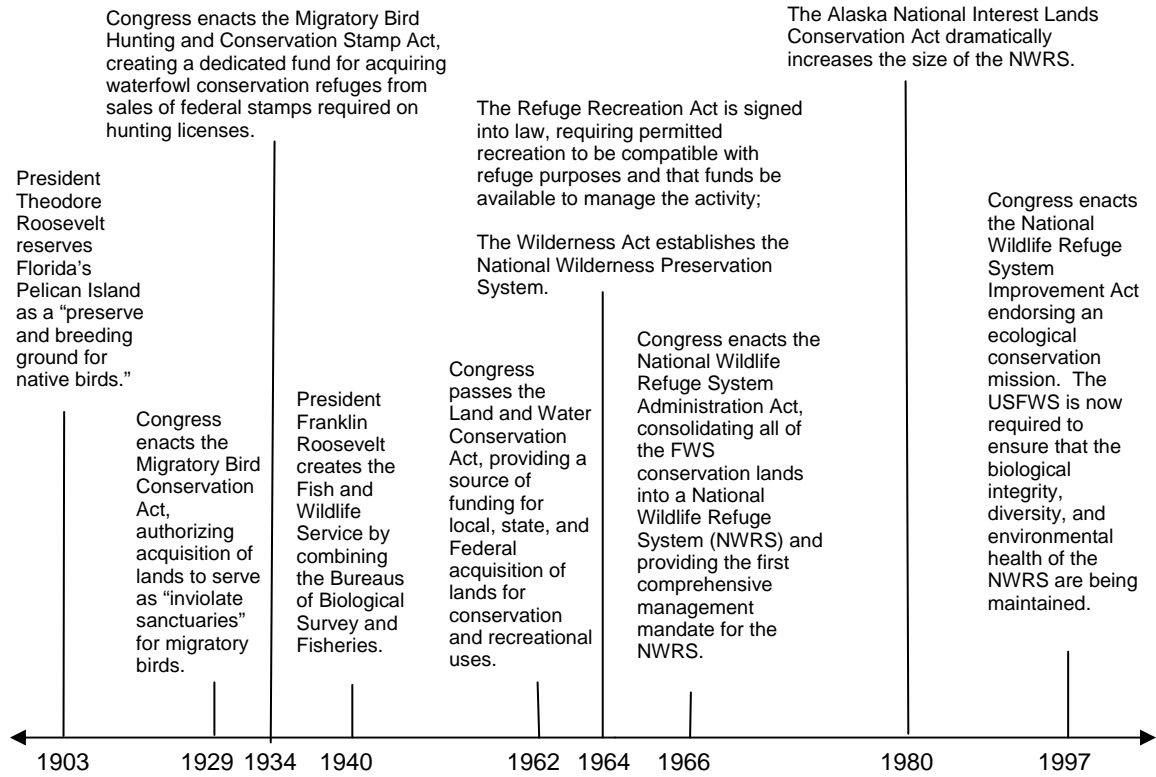
3

1 **Figure 5.3.** Organizational chart (U.S. Fish and Wildlife Service, 2007a).



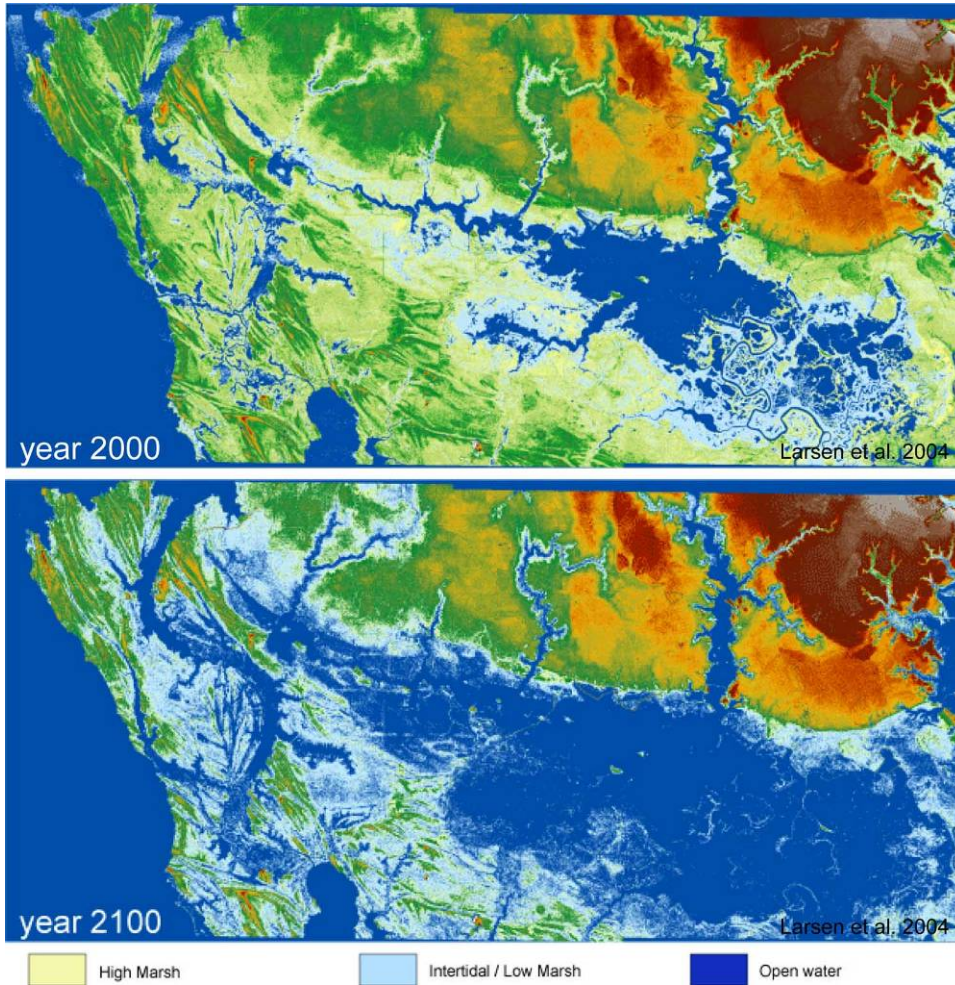
2

1 **Figure 5.4.** Timeline of milestone events of the NWRS (U.S. Fish and Wildlife Service,  
 2 2007d).  
 3



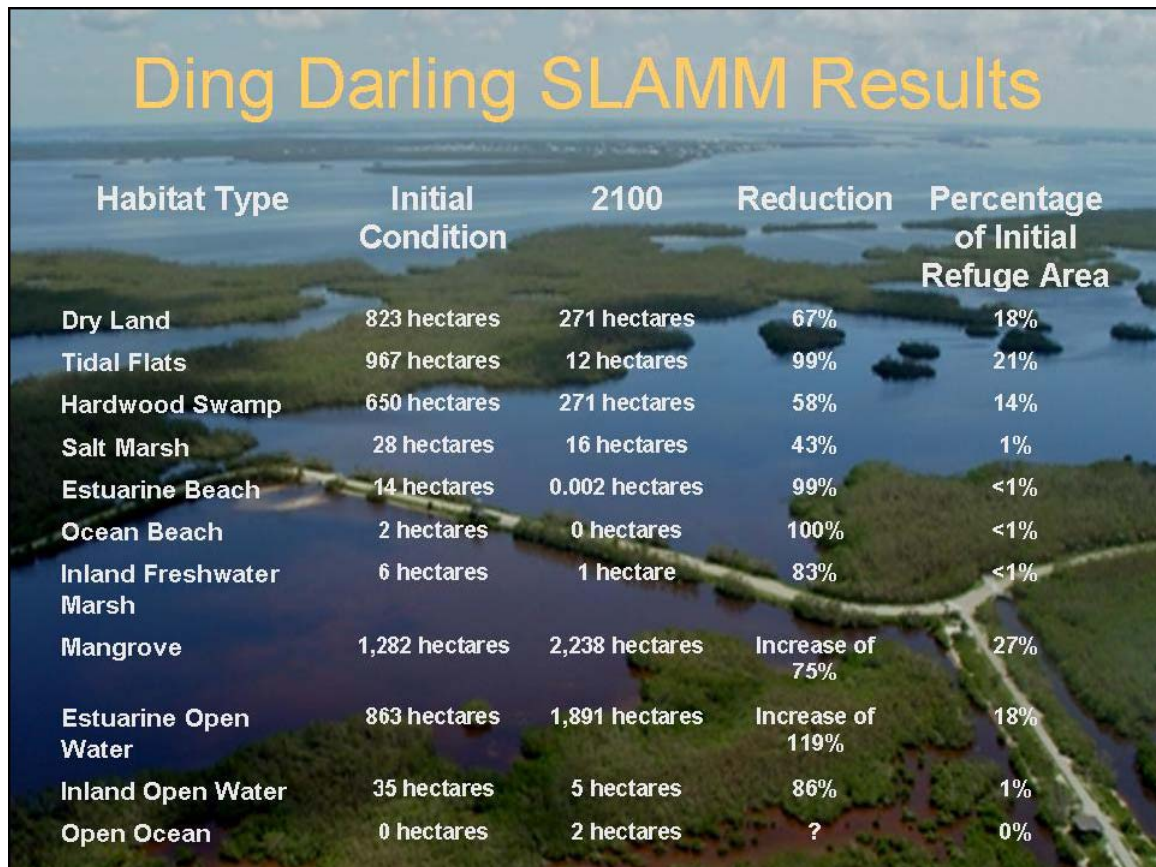
4

1 **Figure 5.5.** Blackwater National Wildlife Refuge, Chesapeake Bay, Maryland. Current  
2 land areas and potential inundation due to climate change (Larsen *et al.*, 2004b).  
3



4  
5

1 **Figure 5.6.** Results of the Sea Level Affecting Marshes Model (SLAMM) for Ding  
 2 Darling National Wildlife Refuge. Source: USFWS unpublished data (McMahon,  
 3 Undated, 2007).  
 4



5  
6

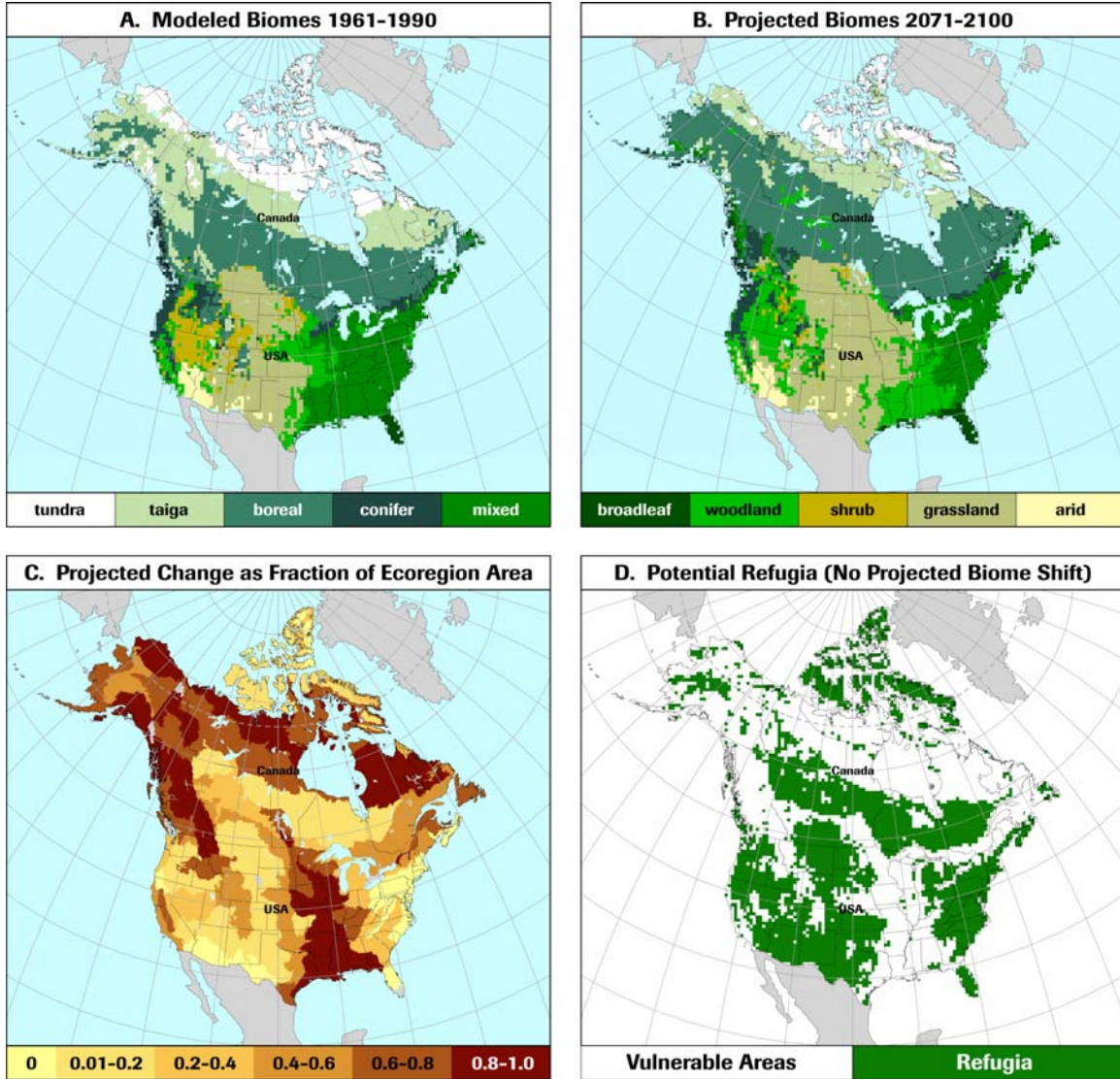
1 **Figure 5.7.** Ecoregions of North America (Level 1) (U.S. Environmental Protection  
2 Agency, 2007).  
3



4

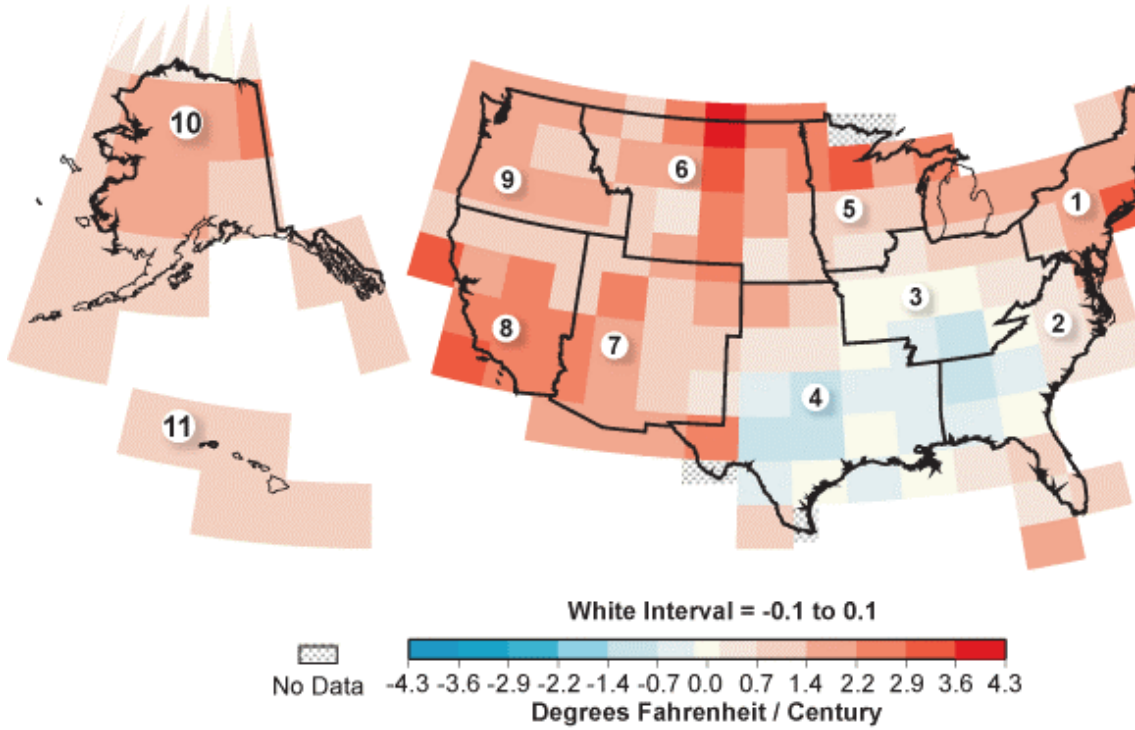


1 **Figure 5.8.** Potential climate change vegetation shifts across North America. A.  
 2 Vegetation 1990. B. Projected vegetation 2100, HadCM3 general circulation model,  
 3 IPCC (2000) SRES A2 emissions scenario. C. Projected change as fraction of ecoregion  
 4 area. D. Potential refugia (Gonzalez, Neilson, and Drapek, 2005).  
 5



6

1 **Figure 5.9.** Annual mean temperature trends 1901–2003. Note warming in northern two-thirds of  
2 Central Flyway and cooling in southern third of the flyway. Data are from NOAA National Climatic  
3 Data Center (2006).



- 1 **Figure 5.10.** Central Flyway Waterfowl Migration Corridor (U.S. Fish and Wildlife Service, 2007b).
- 2



- 3
- 4

1 **Figure 5.11.** Heterogeneity in closed-basin lakes with increasing and decreasing surface area, 1950–  
 2 2000, Yukon Flats NWR, Alaska. Net reduction in lake area was 18% with the area of 566 lakes  
 3 decreasing, 364 lakes increasing, and 462 lakes remaining stable. Adapted from Riordan, Verbyla, and  
 4 McGuire (2006).  
 5

