

Figures

Figures

1
2
3
4
5
6
7
8
9
10
11
12
13
14
15
16
17
18
19
20
21
22
23
24
25
26
27
28
29

NOTE: This information is distributed solely for the purpose of pre-dissemination peer review under applicable information quality guidelines. It has not been formally disseminated by the U.S. Environmental Protection Agency. It does not represent and should not be construed to represent any agency determination or policy.

1 **Figures for Chapter 4, National Parks**

2

3 **Figure 4.1.** Photograph looking up from the Colorado River at the Grand Canyon, courtesy of
4 Jeffrey Lovich, USGS.



5

1 **Figure 4.2.** Everglades National Park, Photo courtesy of National Park Service; photo by
2 Rodney Cammauf.



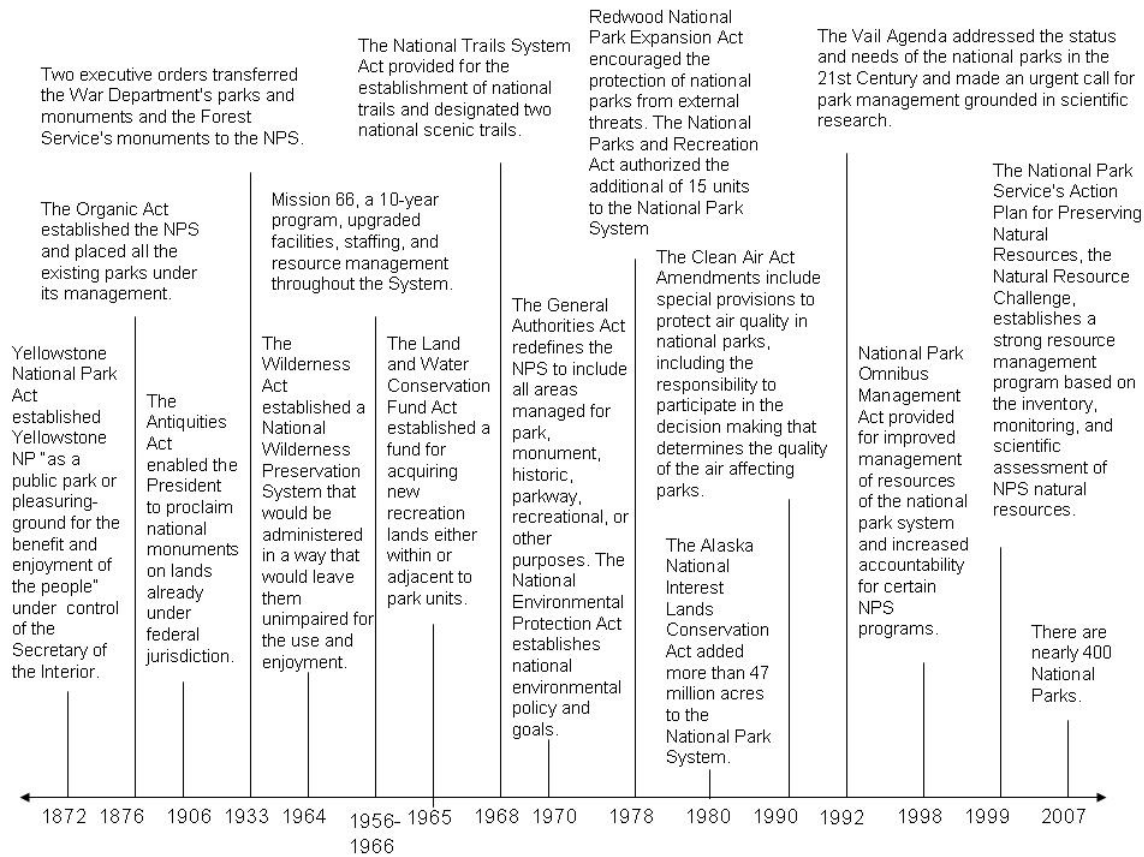
3

1 **Figure 4.3.** Photograph of Joshua tree in Joshua Tree National Park. Photo courtesy of National
2 Park Service.



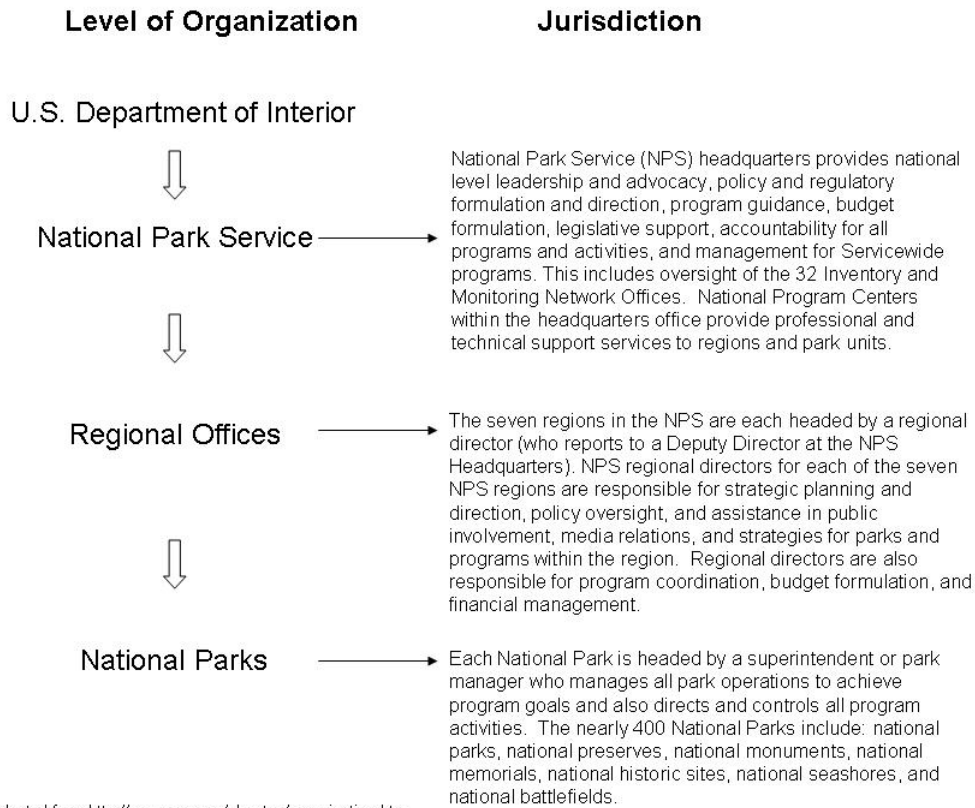
3

1 **Figure 4.4. Historical timeline of the National Park Service. Adapted from the National Park**
 2 **Service (2007a).**



3

1 **Figure 4.5.** Organizational chart of National Park Service. Adapted from the National Park
 2 Service (2007b).



Adapted from <http://www.nps.gov/aboutus/organization.htm>

3

- 1 **Figure 4.6.** Map of the National Park System. Data courtesy of National Park Service, Harpers
- 2 Ferry Center (2007).
- 3

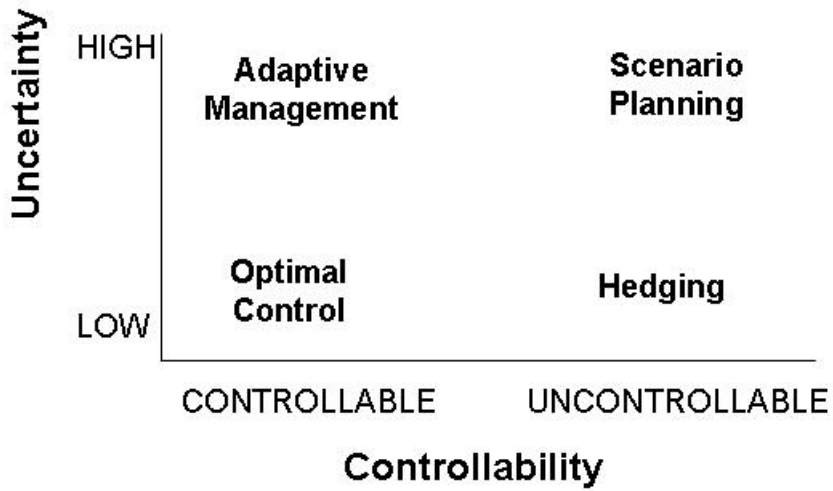


- 4
- 5

1 **Figure 4.7.** Kemp's Ridley hatchlings heading for the water at a hatchling release. Photo
2 courtesy National Park Service, Padre Island National Seashore.

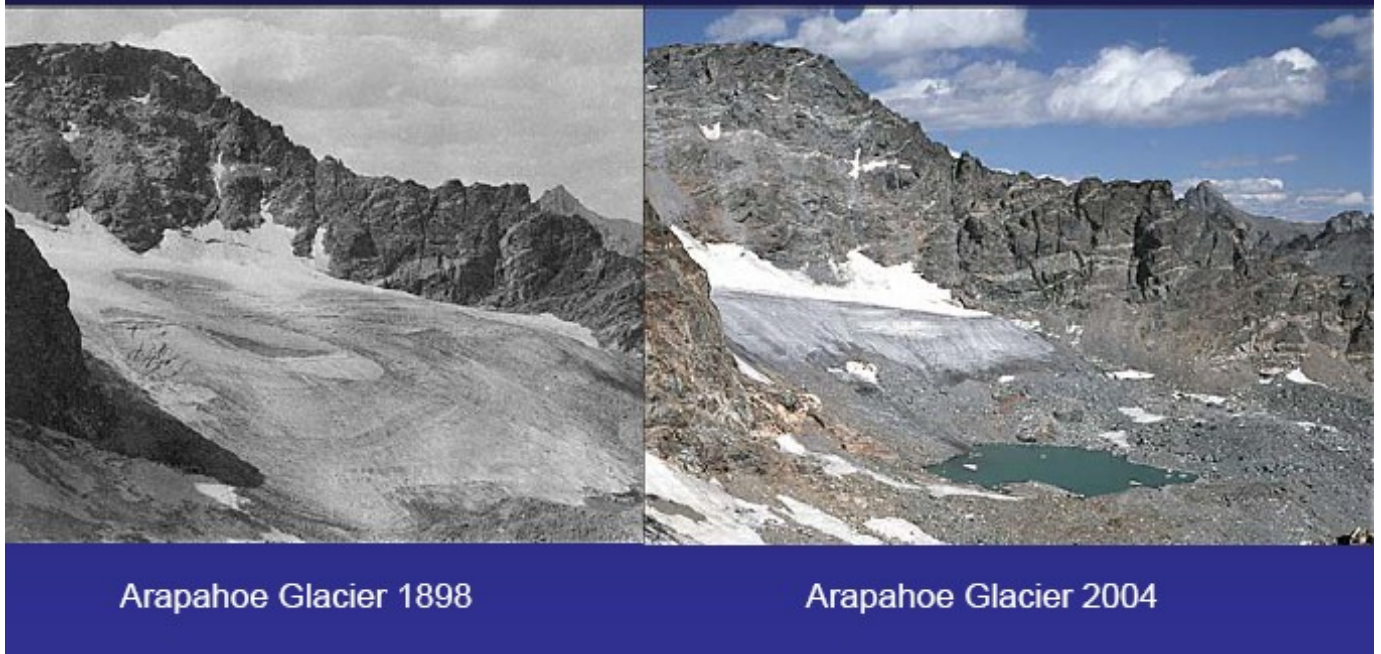


- 1 **Figure 4.8.** Scenario planning is appropriate for systems in which there is a lot of uncertainty
- 2 that is not controllable. In other cases optimal control, hedging, or adaptive management may be
- 3 appropriate responses. Reprinted from Peterson, Cumming, and Carpenter (2003).



- 4
- 5

1 **Figure 4.9.** Photos of Arapahoe Glacier in 1898 and 2004 (NSIDC/WDC for Glaciology,
2 Boulder, Compiler, 2006).



1 **Figure 4.10.** Photo pair of Rowe Glacier, with permissions, NSIDC and leachfam website (Lee,
2 1916; Leach, 1994).



3
4
5
6
7
8