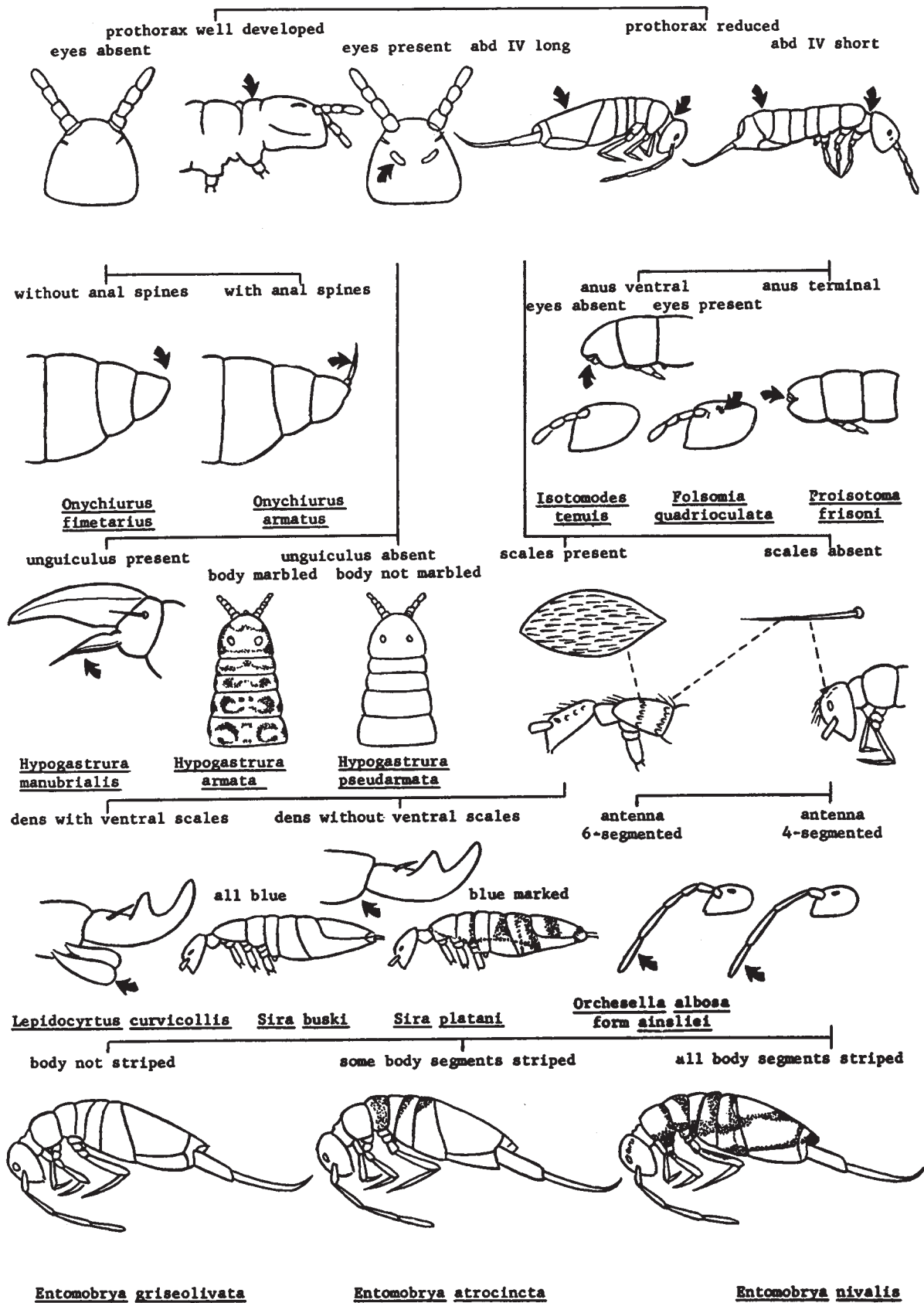
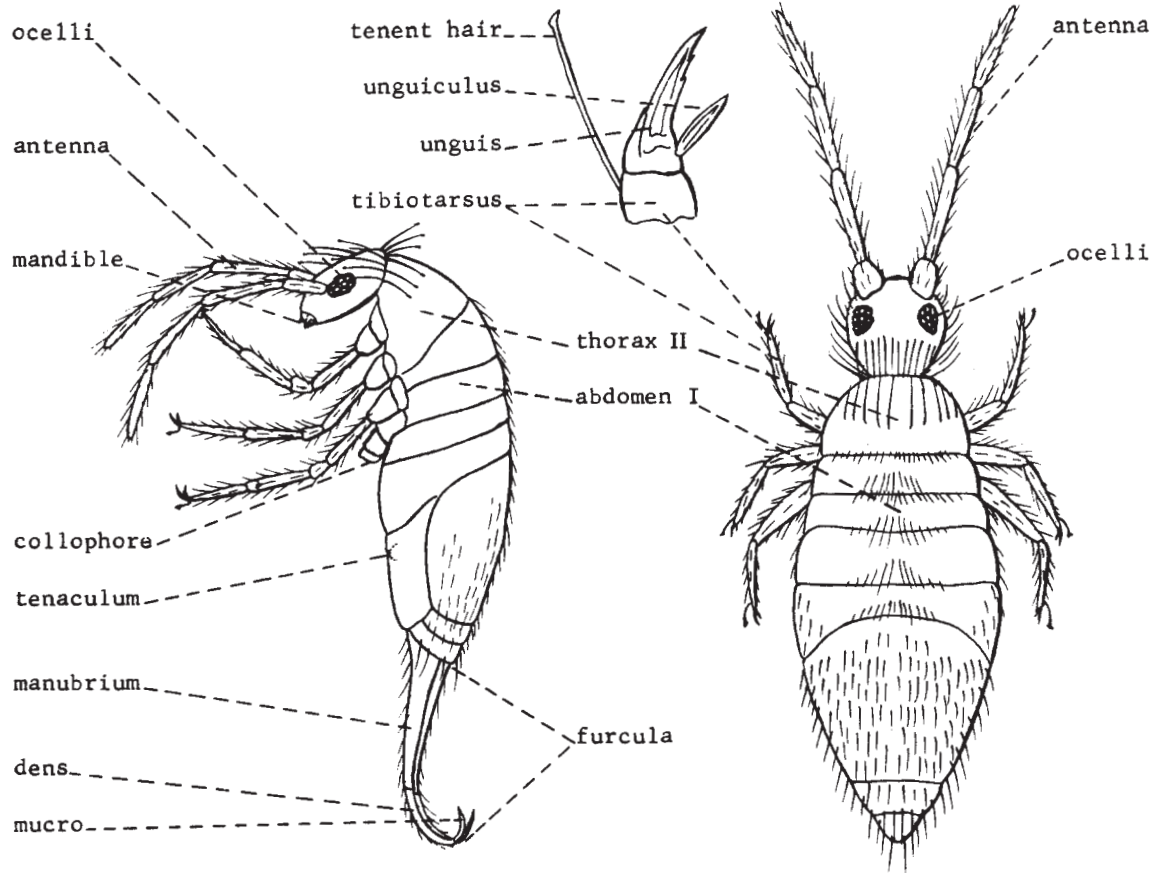


COLLEMBOLA: PICTORIAL KEY TO COMMON DOMESTIC SPECIES

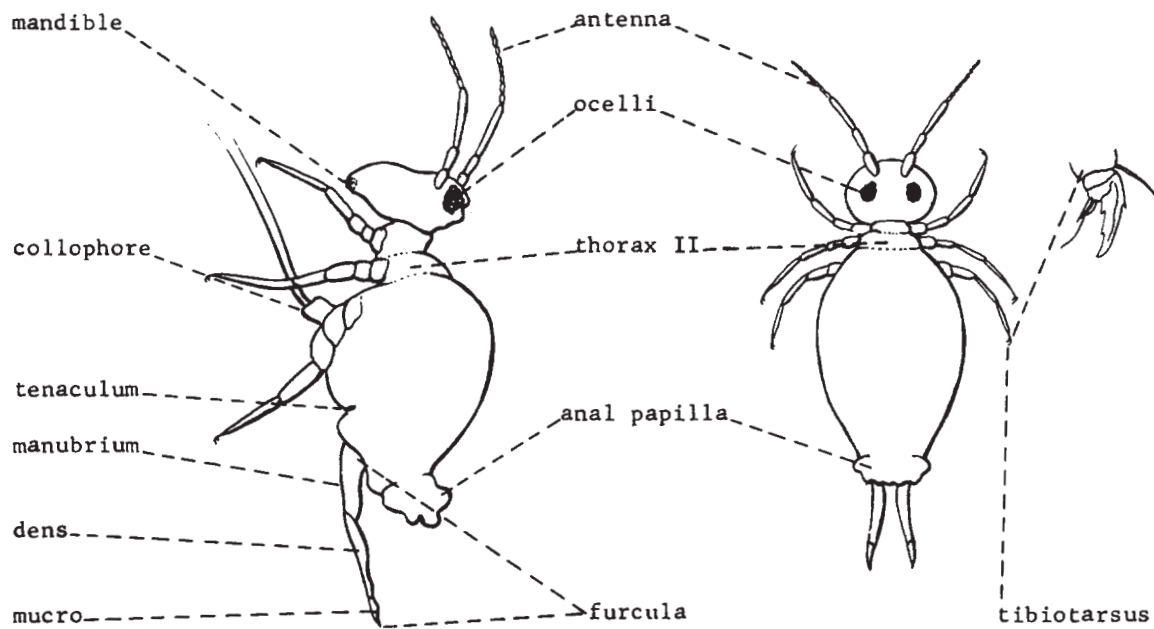
Harold George Scott, and Chester J. Stojanovich



COLLEMBOLA DIAGRAMS
Harold George Scott

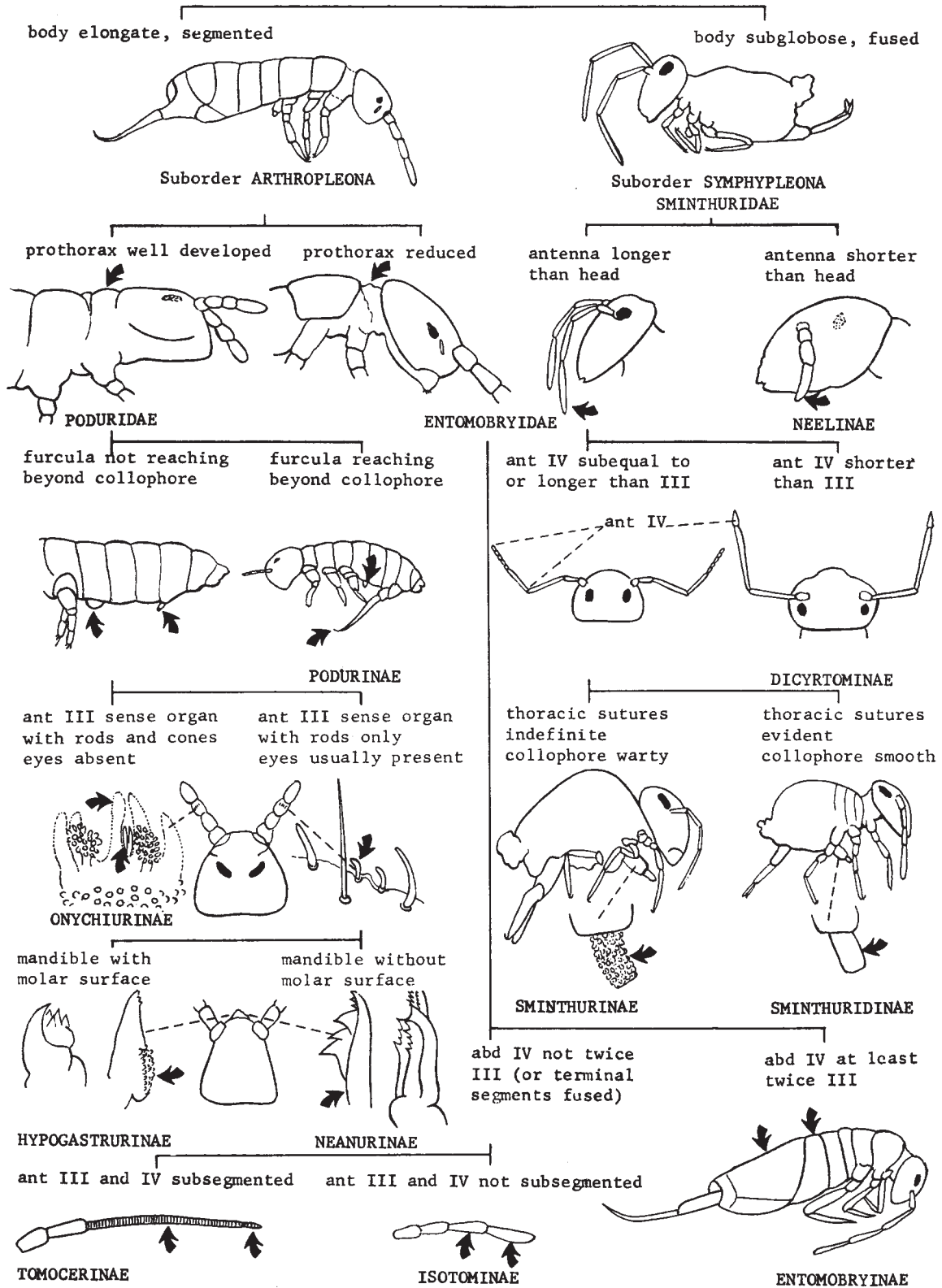


SUBORDER ARTHROPLEONA



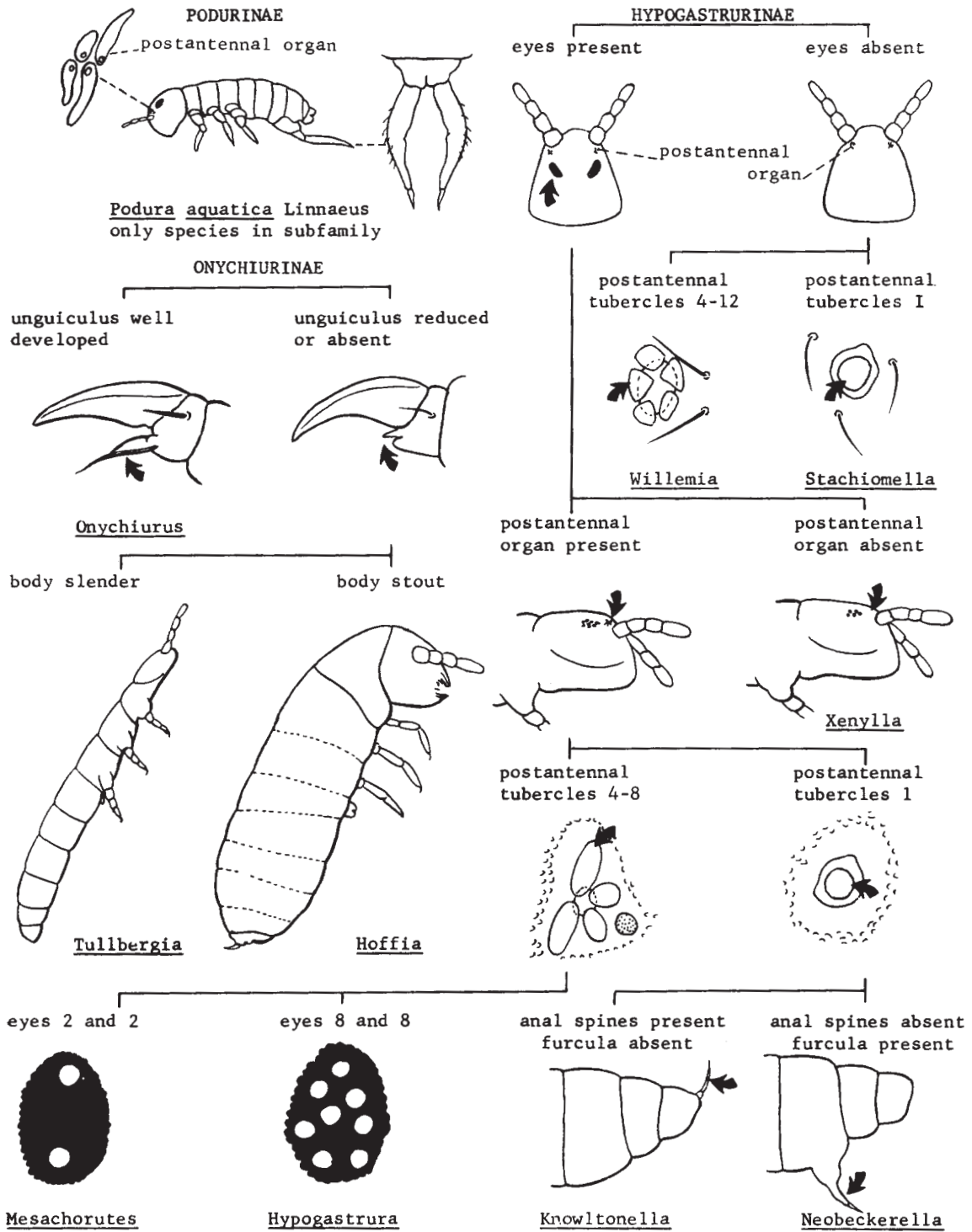
SUBORDER SYMPHOPLEONA

COLLEMBOLA: PICTORIAL KEY TO WORLD SUBFAMILIES
Harold George Scott, Ph.D.



COLLEMBOLA: PICTORIAL KEY TO NEARCTIC GENERA
Harold George Scott, Ph.D.

SUBFAMILIES PODURINAE, HYPOGASTRURINAE, AND ONYCHIURINAE

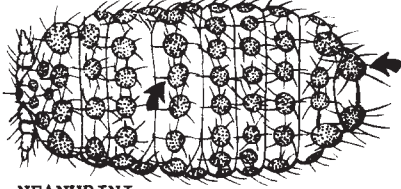


COLLEMBOLA: PICTORIAL KEY TO NEARCTIC GENERA
Harold George Scott, Ph.D.

SUBFAMILY NEANURINAE

abd VI large, bilobed
 segmental tubercles present

abd VI small, rounded
 segmental tubercles absent



NEANURINI

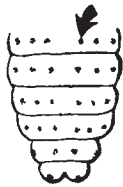
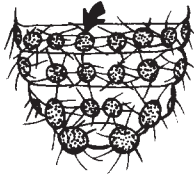
PSEUDACHORUTINI

segmental tubercles large

segmental tubercles small

anal spines present

anal spines absent



Neanura

Neanurodes

furcula present

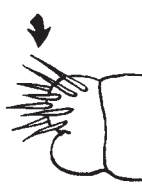
furcula absent



anal spines 2

anal spines 3-5

anal spines 8



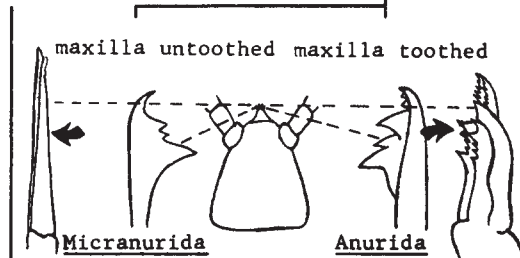
Xenyllodes

Friesea

Prospinanura

maxilla untoothed

maxilla toothed



Micranurida

Anurida

eyes 5 and 5

eyes 6 and 6

eyes 8 and 8



Microgastrura

postantennal tubercles 8

postantennal tubercles 4-5

with buccal cone

without buccal cone



Logacanura

Odontella

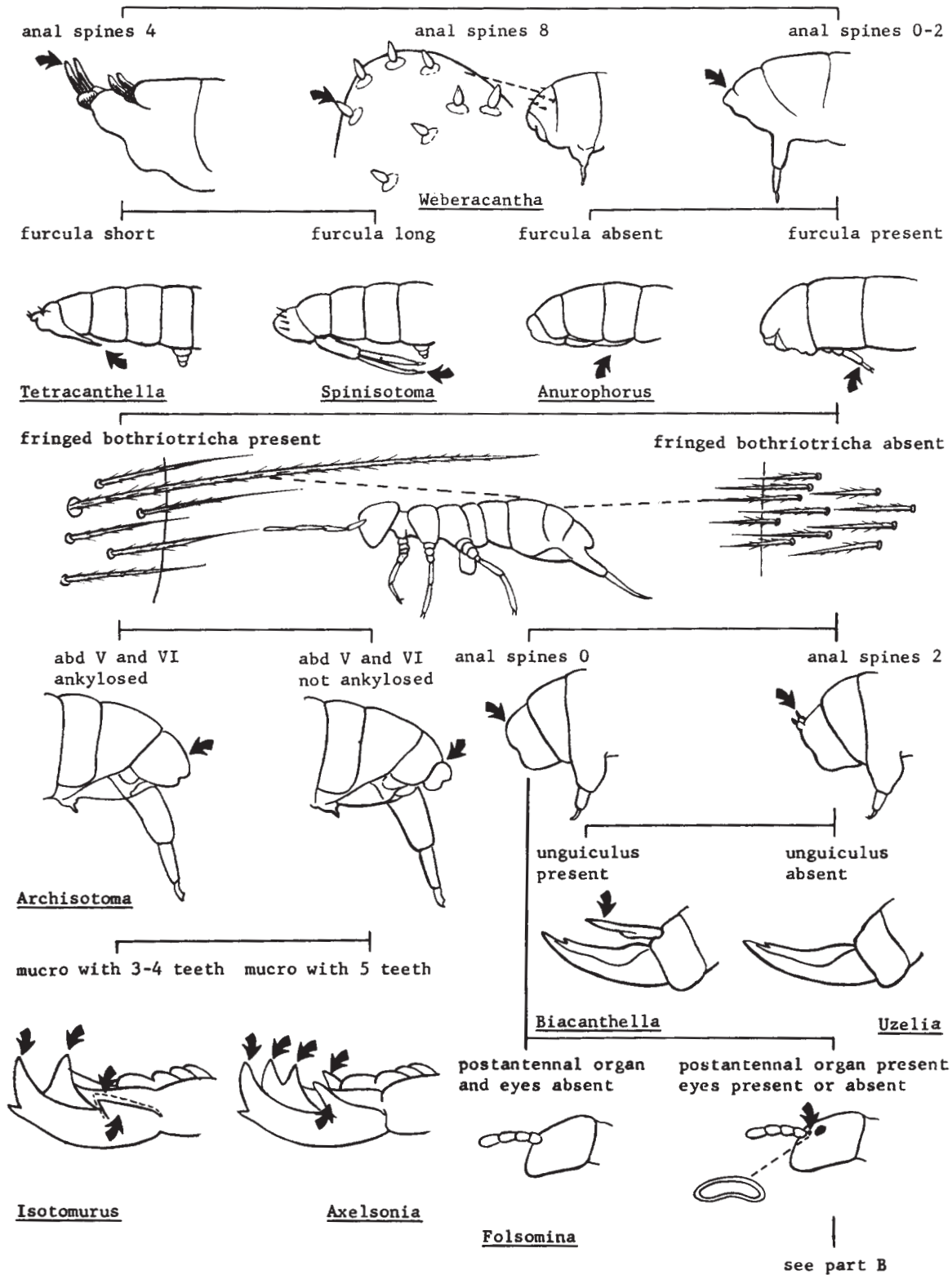
Brachystomella

Pseudachorutes

COLLEMBOLA: PICTORIAL KEY TO NEARCTIC GENERA

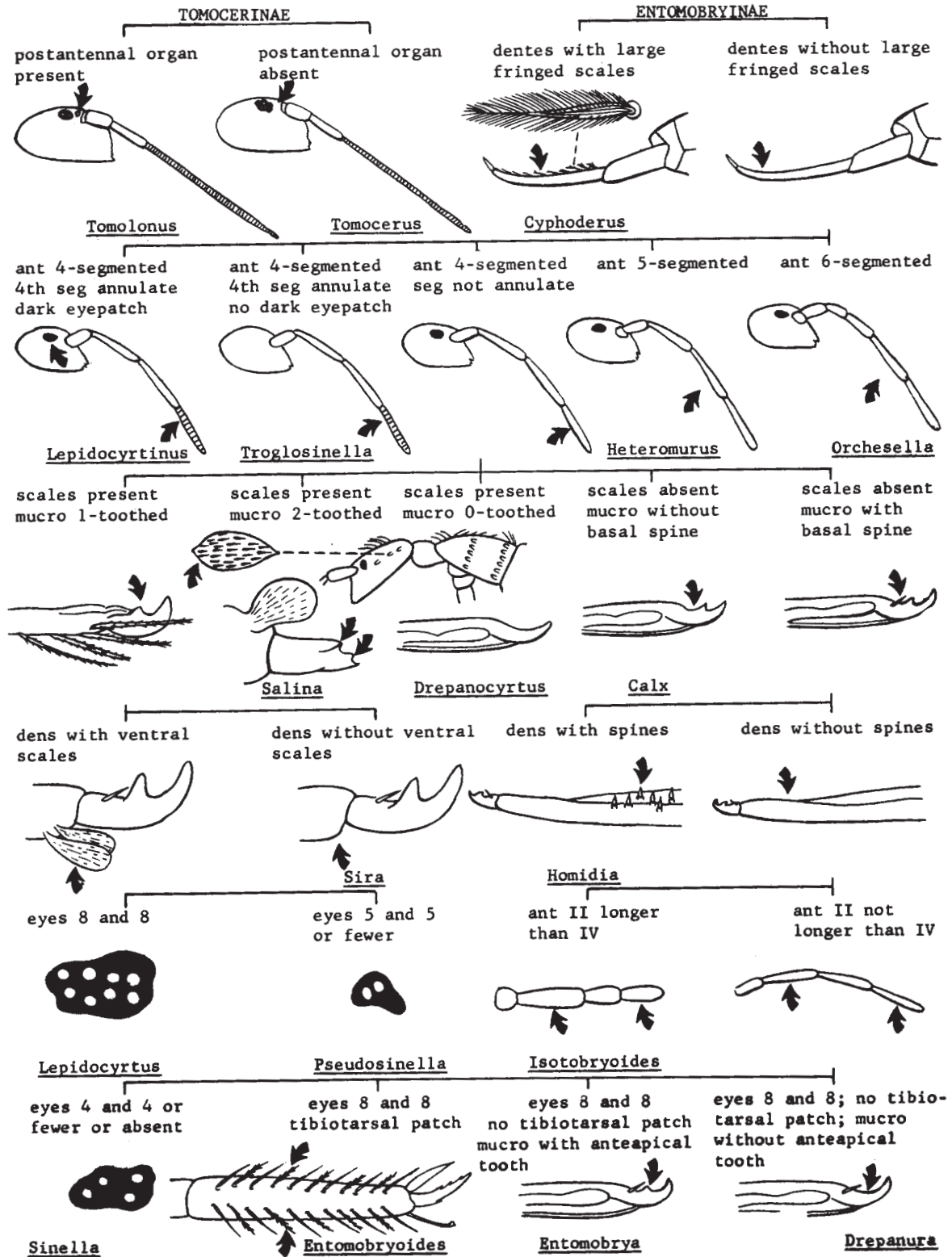
Harold George Scott, Ph.D.

SUBFAMILY ISOTOMINAE - Part A



COLLEMBOLA: PICTORIAL KEY TO NEARCTIC GENERA
Harold George Scott, Ph.D.

SUBFAMILIES TOMOCERINAE AND ENTOMOBRYINAE



COLLEMBOLA: PICTORIAL KEY TO NEARCTIC GENERA
Harold George Scott, Ph.D.
FAMILY SMINTHURIDAE

