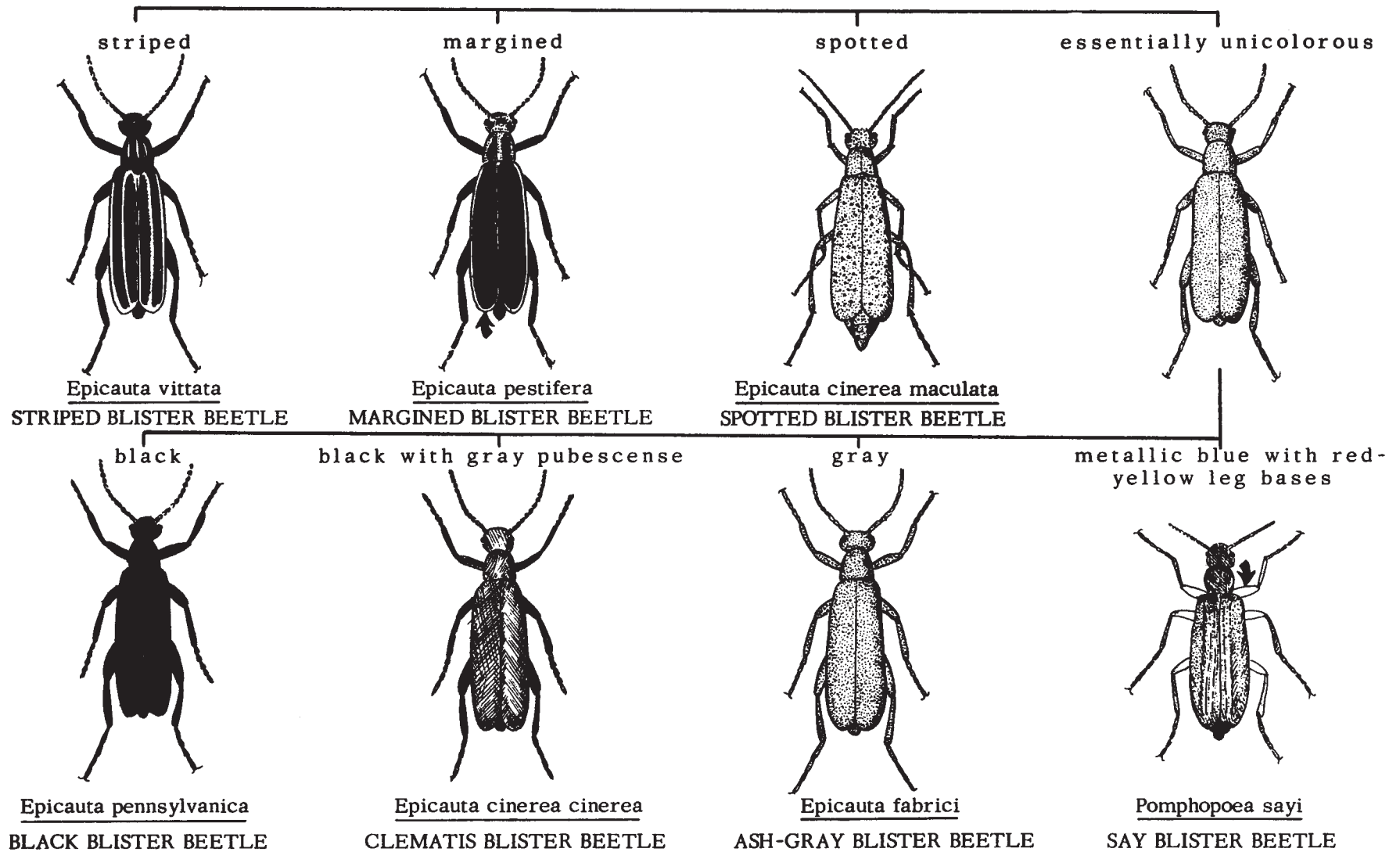


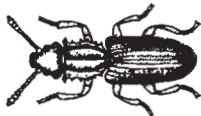
BLISTER BEETLES: KEY TO SOME COMMON UNITED STATES SPECIES
 Harold George Scott and Chester J. Stojanovich



BETLES: PICTORIAL KEY TO SOME SPECIES COMMONLY ASSOCIATED WITH STORED FOODS

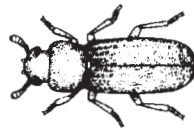
Harry D. Pratt

PRONOTUM WITH 6 TEETH ON EACH SIDE
BEAK ABSENT; SPECIES ABOUT 1/8 INCH LONG



SAW-TOOTHED GRAIN BEETLE
Oryzaephilus surinamensis

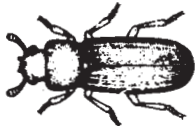
PRONOTUM WITHOUT TEETH ON EACH SIDE
BEAK ABSENT



SMALL BROWNISH SPECIES
LESS THAN 1/4 INCH LONG

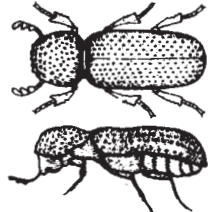
LARGER BLACKISH SPECIES
1/4 TO 3/4 INCH LONG

HEAD VISIBLE FROM ABOVE
1/8 INCH LONG OR MORE

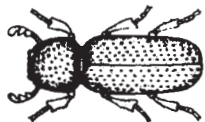


CONFUSED AND RED FLOUR BEETLES
Tribolium confusum AND *castaneum*

HEAD HIDDEN UNDER PRONOTUM
LESS THAN 1/8 INCH LONG



FORE WING WITH ROUGHENED SURFACE



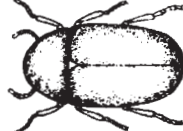
LESSER GRAIN BORER
Rhyzopertha dominica

FORE WING WITH LINES



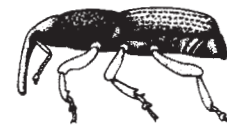
DRUG STORE BEETLE
Stegobium paniceum

FORE WING SMOOTH

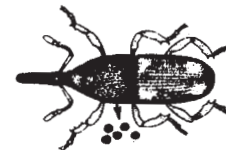


CIGARETTE BEETLE
Lasioderma serricorne

PRONOTUM WITHOUT TEETH ON EACH SIDE
BEAK PRESENT; SPECIES ABOUT 1/8 INCH LONG

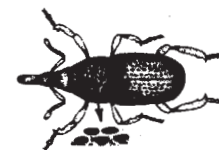


EACH FORE WING WITH 2 PALE SPOTS
PRONOTUM WITH ROUND PUNCTURES



RICE WEEVIL
Sitophilus oryza

EACH FORE WING DARK
PRONOTUM WITH ELONGATE PUNCTURES



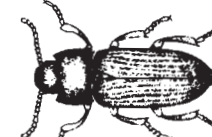
GRANARY WEEVIL
Sitophilus granarius

FLATTENED BEETLES
1/4 TO 1/2 INCH LONG
PRONOTUM SEPARATED BY STRONG
CONSTRICTION FROM BASES OF WINGS



CADELLE
Tenebroides mauritanicus

CONVEX BEETLES
1/2 INCH LONG OR MORE
PRONOTUM NOT SO STRONGLY
SEPARATED FROM BASES OF WINGS



YELLOW MEAL WORM
Tenebrio molitor