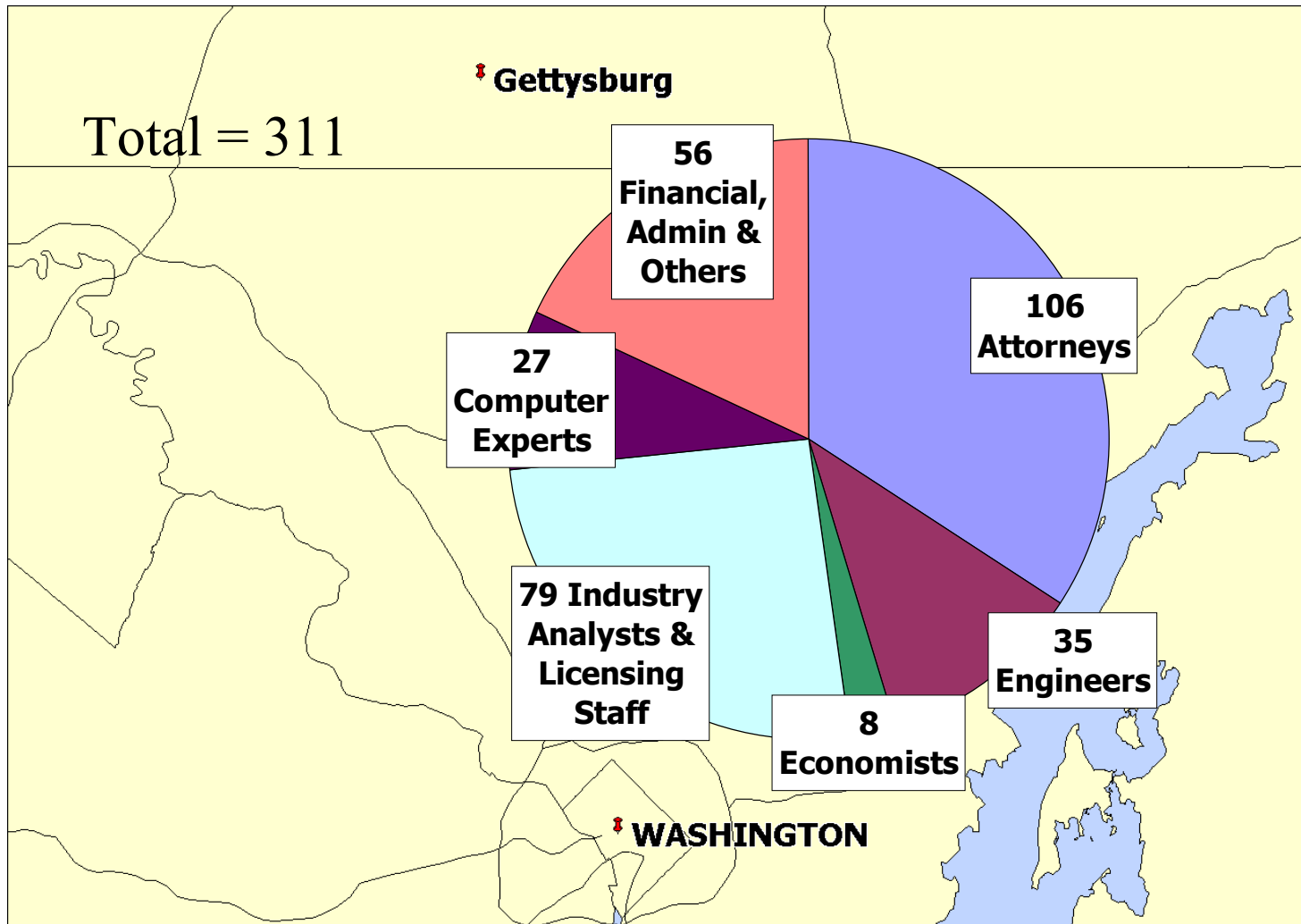


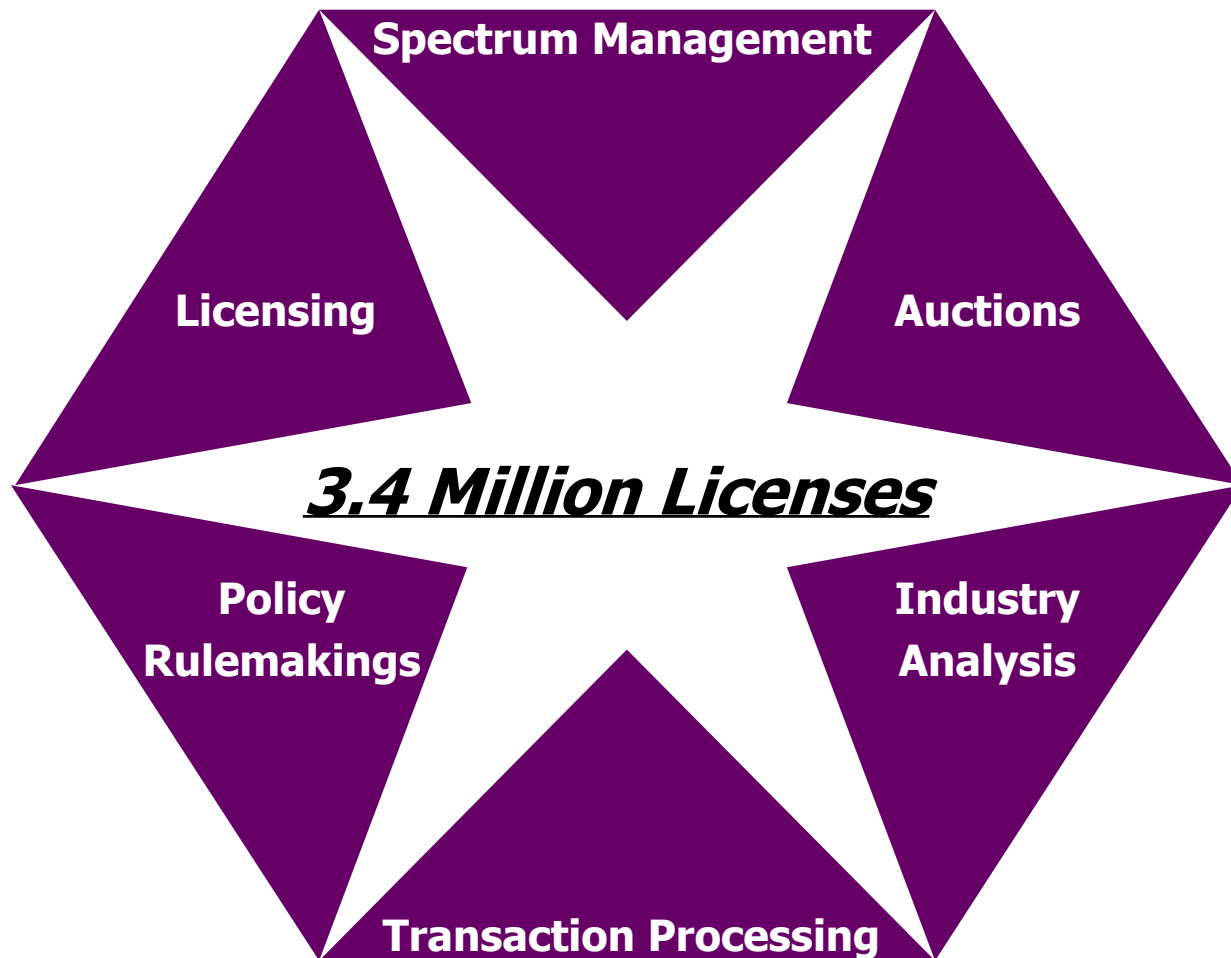
Wireless Telecommunications Bureau

FCC Agenda Meeting
January 17, 2002

Who We Are



What We Do



WTB Organization

**OFFICE OF THE BUREAU
CHIEF**

(13)

Thomas J. Sugrue
Bureau Chief

Policy Division
(34)

Kris Monteith,
Chief

**Commercial
Wireless
Division**
(84)

William Kunze,
Chief

**Data
Management
Division**
(25)

John Chudovan,
Chief

**Auctions and
Industry
Analysis Division**
(65)

**Margaret
Wiener, Chief**

**Public Safety &
Private Wireless
Division**
(78)

D'Wana Terry,
Chief

ReOrg: MMDS/ITFS
licensing and policy

Cultivating Our Top Resource - People

Enhancing Skills

*Pilot 2001
Agency-wide 2002*

*Initiated 2001
Funded for 2002*

Speaker/Presentation Training

“Information Mapping”

Wireless Engineering for Non-Engineers

*Coming in
4Q2002*

2001

2002

Inter-division
Manager
Meetings

Wireless Hot
Topics
Brownbags

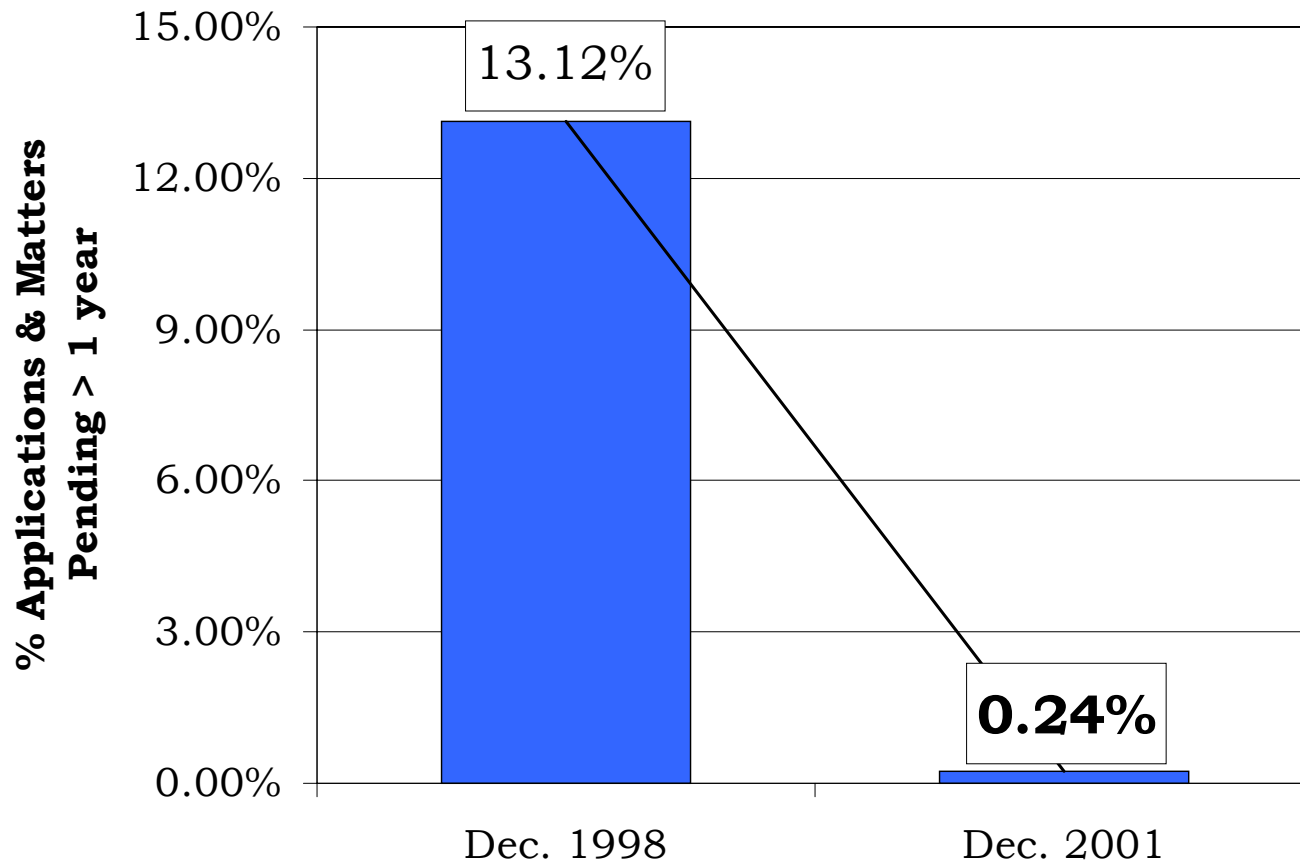
*Soon to be
presented by all
WTB divisions!*

*Wireless Update
Newsletter*

Sharing Information

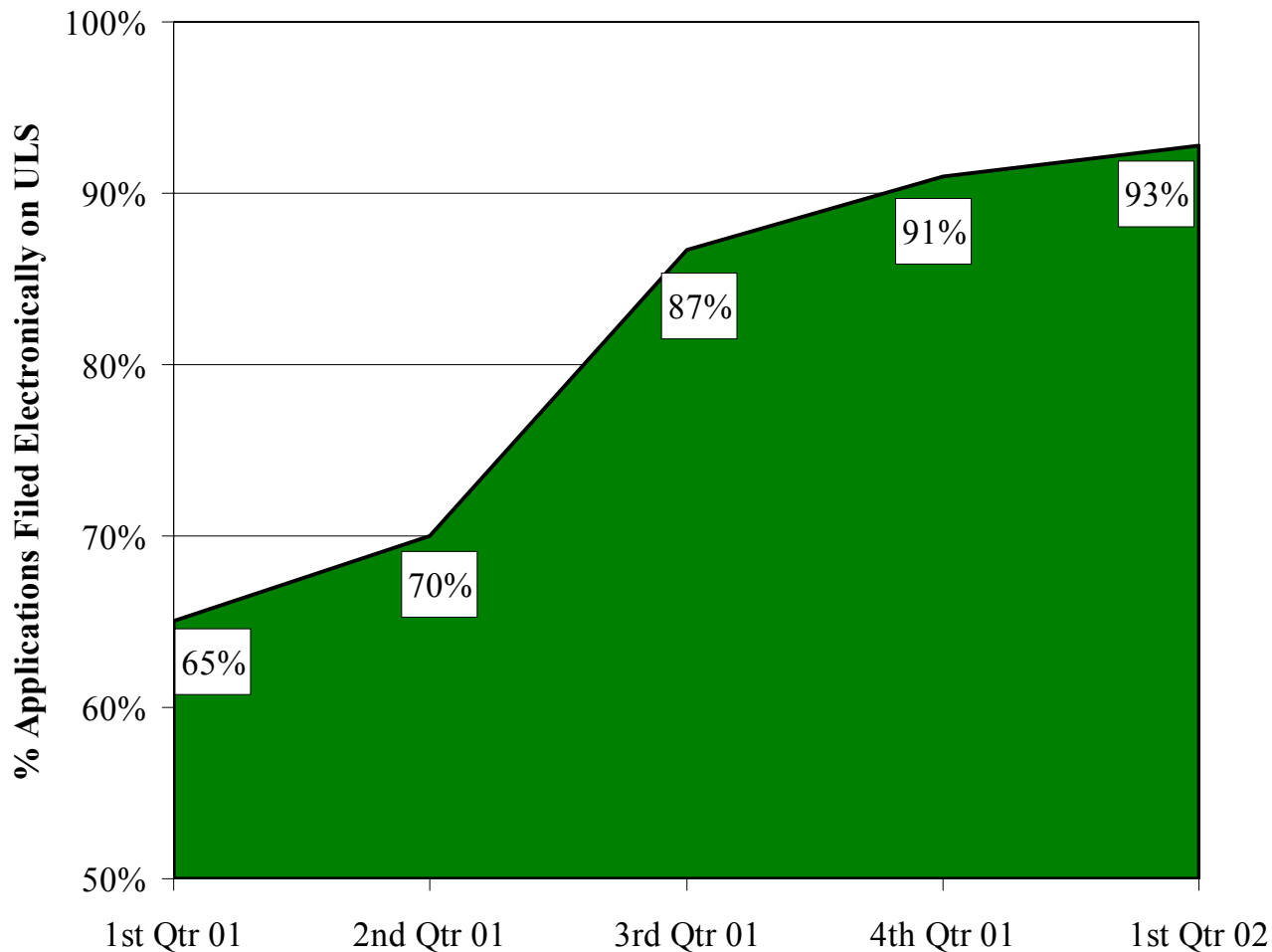
Backlog Reduction

Percent of Items Pending > 1 year



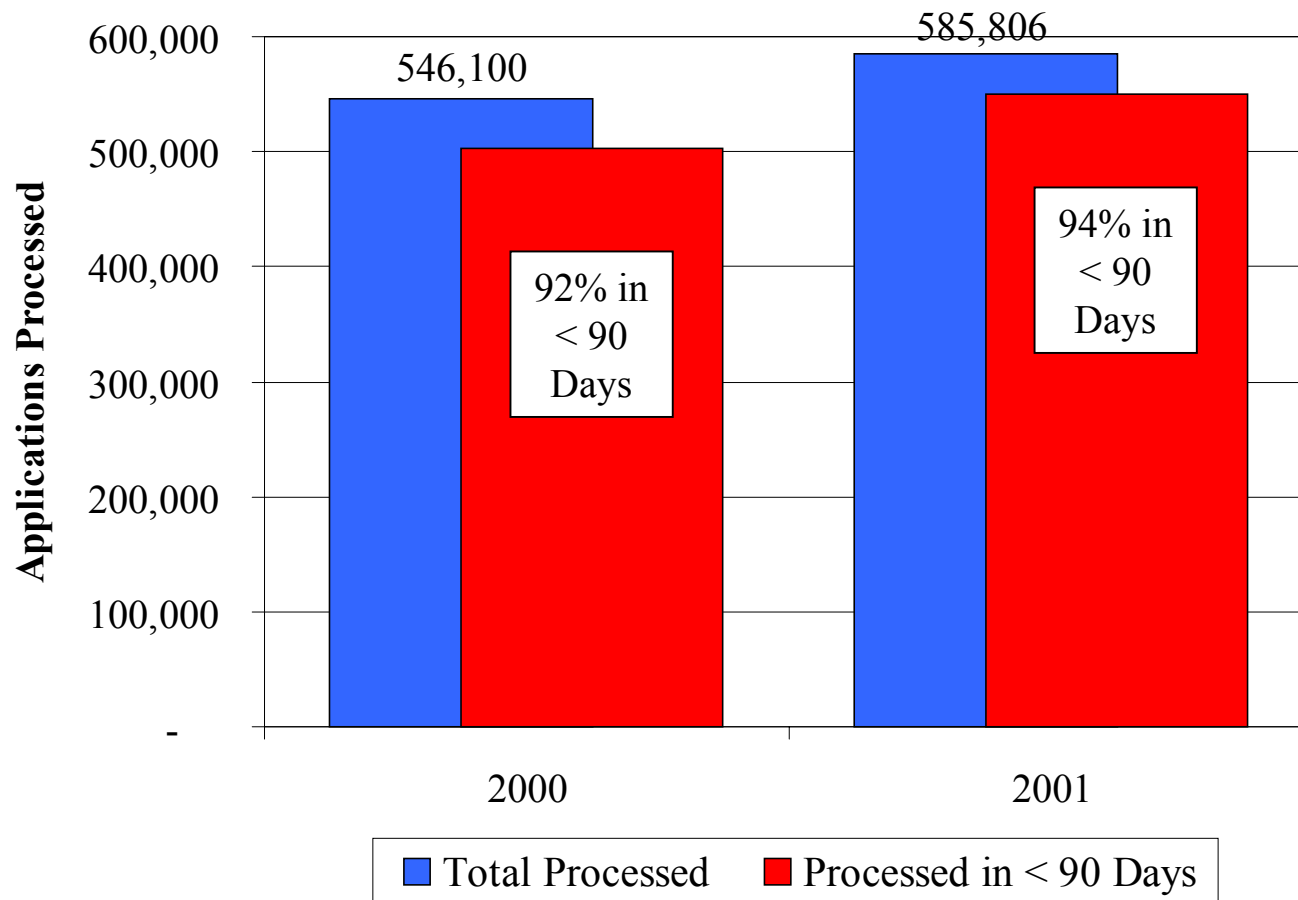
Leveraging Technology in Operations

Electronic Filings on ULS



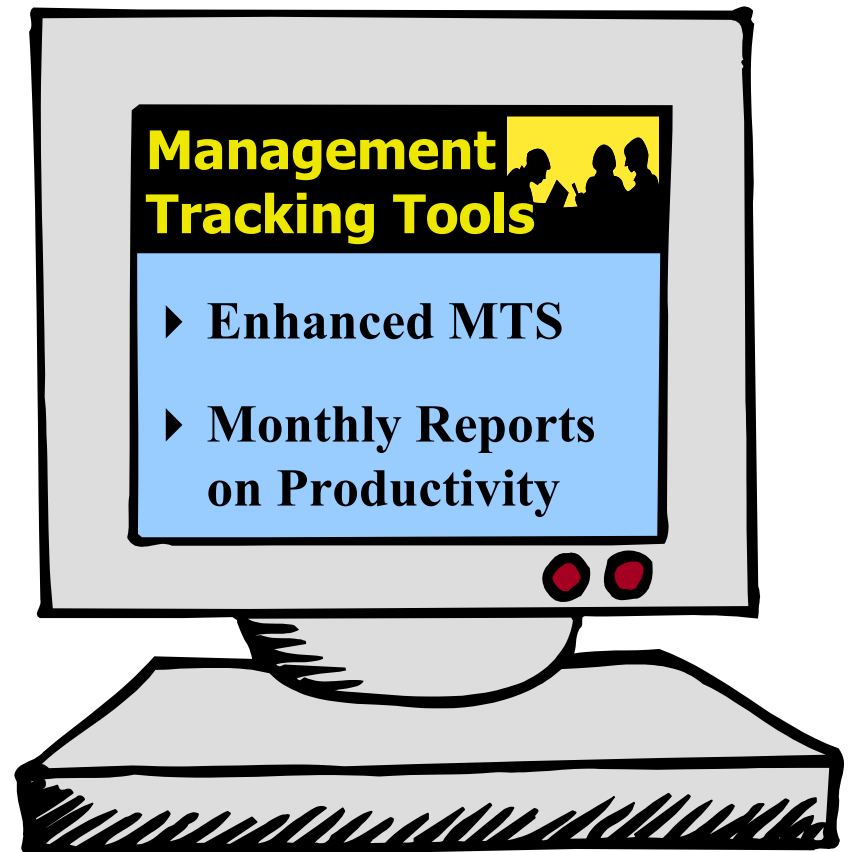
Leveraging Technology in Operations

ULS - Applications Processed



Leveraging Technology in Operations

Auctions and Management



Major Policy Accomplishments in 2001

91 Commission-level Items Completed

Broadband

Steps Towards 3G Deployment

Flexible
Use
Policy

Facilities

Spectrum Policy

27 MHz

Spectrum Cap Sunset

Private
Spectrum
Audit

Channels
52-59

6 Auctions
Completed

Competition Policy

Merger
Review

Numbering
Resources

CMRS
Report

Homeland Security

E911

Public
Safety
Spectrum

CALEA

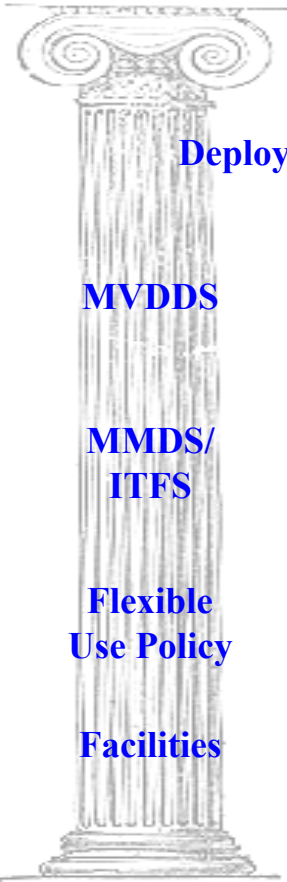
Post 9/11
Status

DTV

Channels
60-69

Major Policy Goals in 2002

Broadband



Deployment of 3G

MVDDS

MMDS/
ITFS

Flexible
Use Policy

Facilities

Spectrum Policy



Combinatorial Bidding

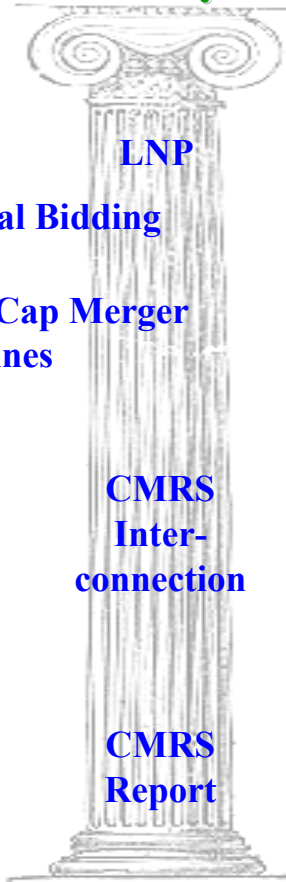
Post-Spectrum Cap Merger
Guidelines

Private
Spectrum
Audit

Secondary
Markets

Major
Auctions

Competition Policy



LNP

CMRS
Inter-
connection

CMRS
Report

Homeland Security



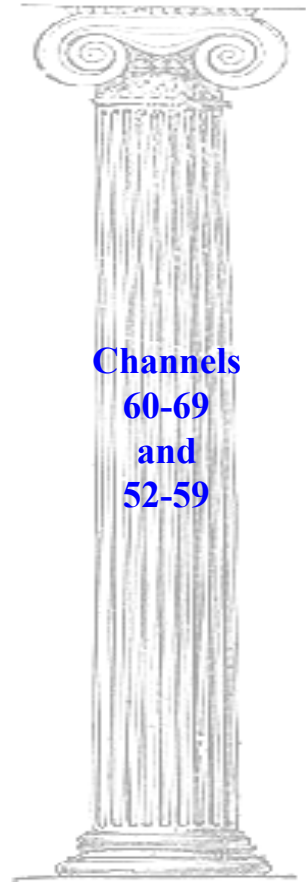
E911

Priority
Access

Public
Safety
Spectrum

Interference
Issues

DTV



Channels
60-69
and
52-59