

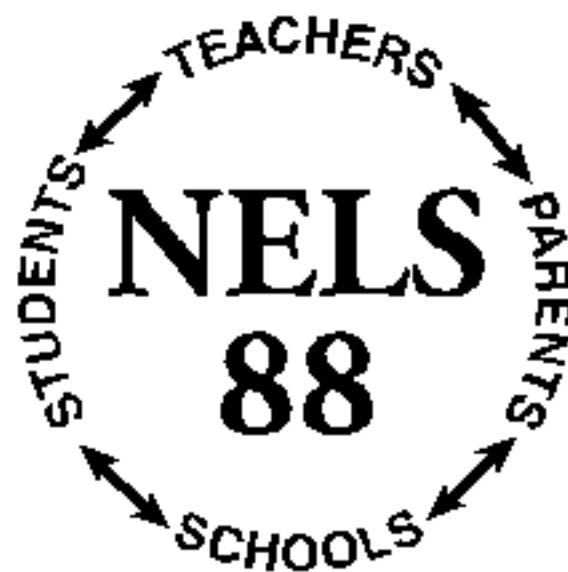
**About This File:**

**This Acrobat pdf file is a scanned image and therefore may not be accessible to assistive technologies. For further assistance with the content of this file, please call (202) 219-7101 or (202) 502-7423 and specify which questionnaire you're enquiring about.**

**You may also e-mail for help at [Ilona.Berkovits@ed.gov](mailto:Ilona.Berkovits@ed.gov) or [Jeffrey.Owings@ed.gov](mailto:Jeffrey.Owings@ed.gov).**

**Thank you.**

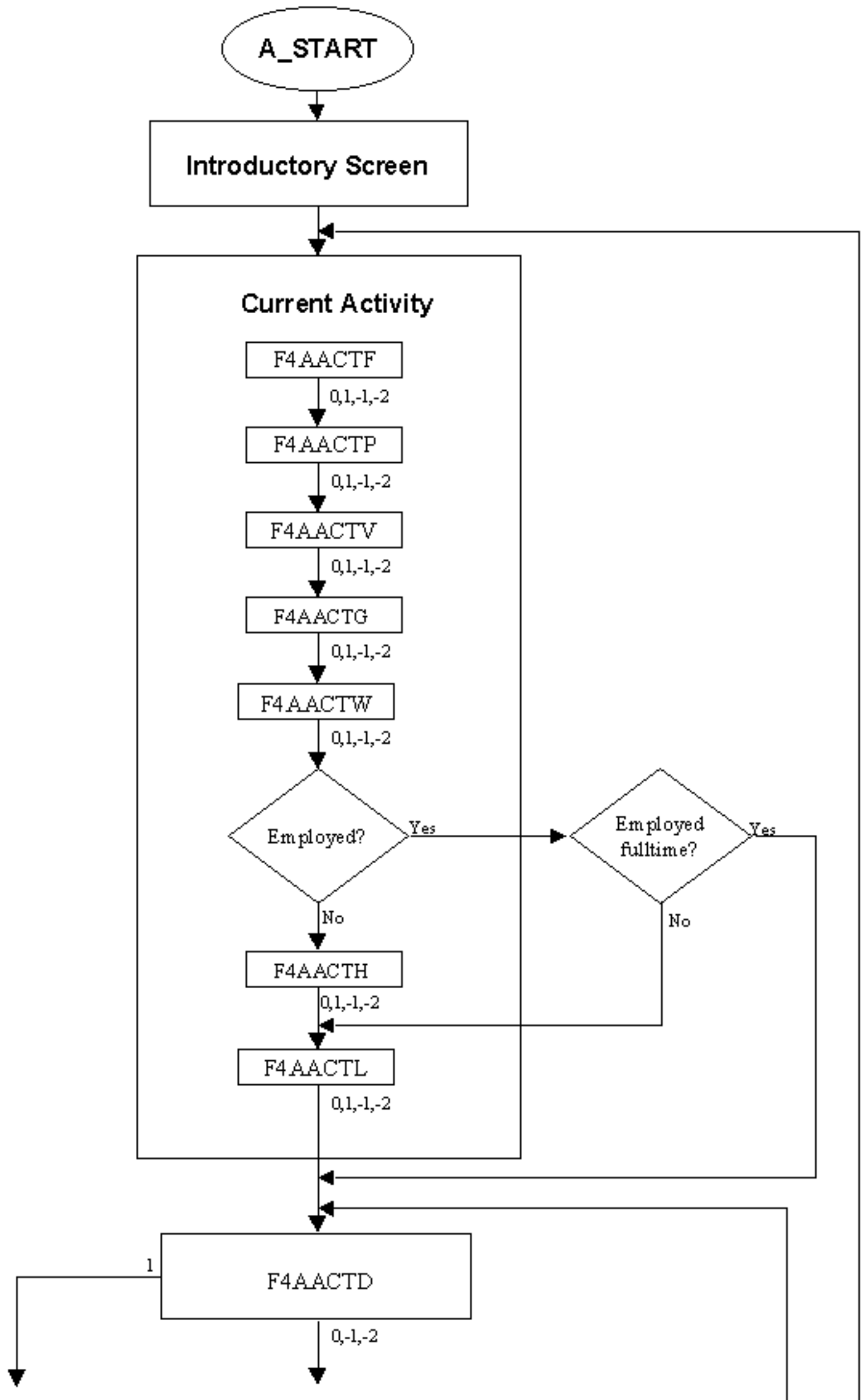
**National Education Longitudinal Study  
Fourth Follow-up: 1988-2000 (NELS:88/2000)**

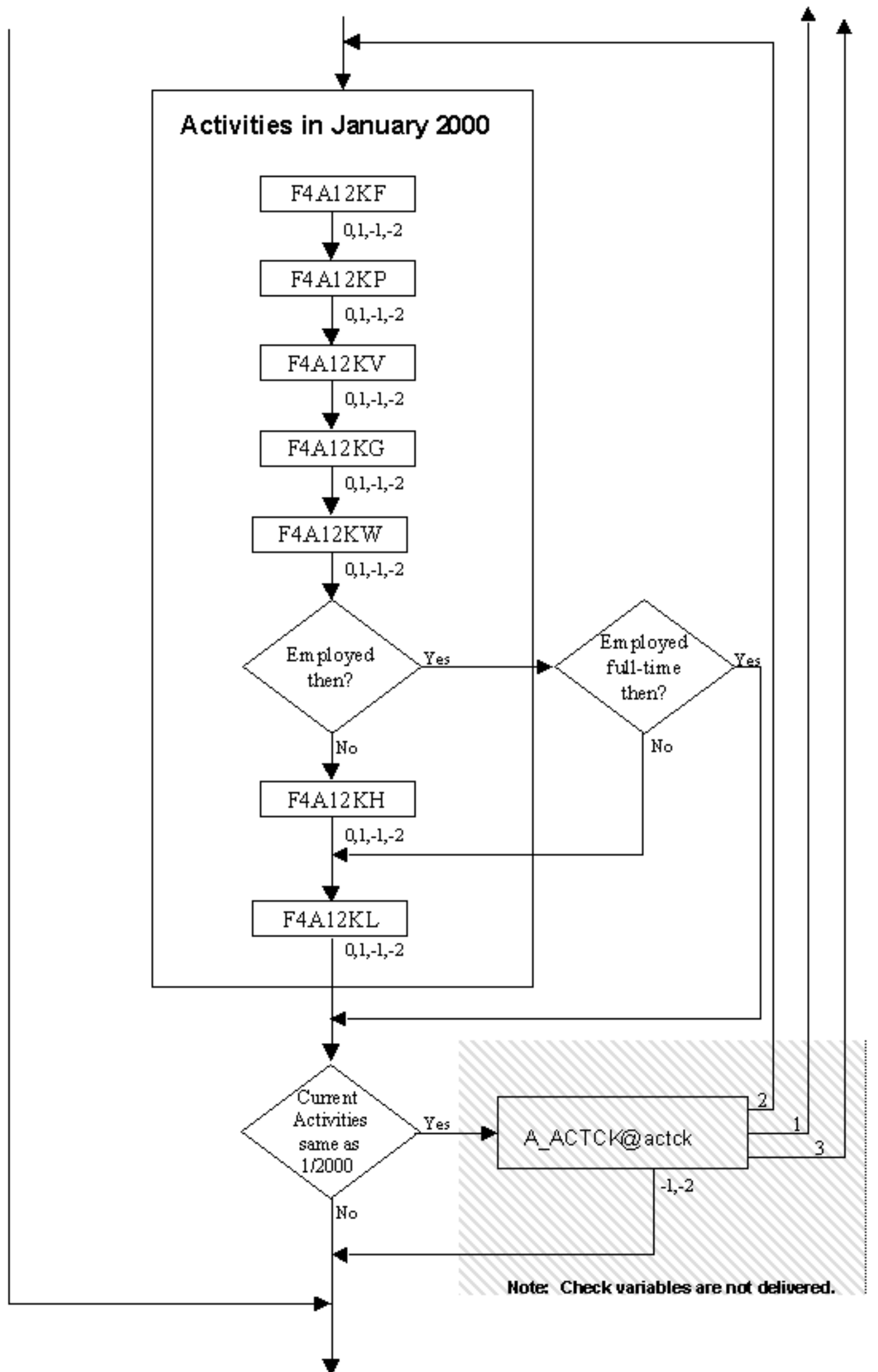


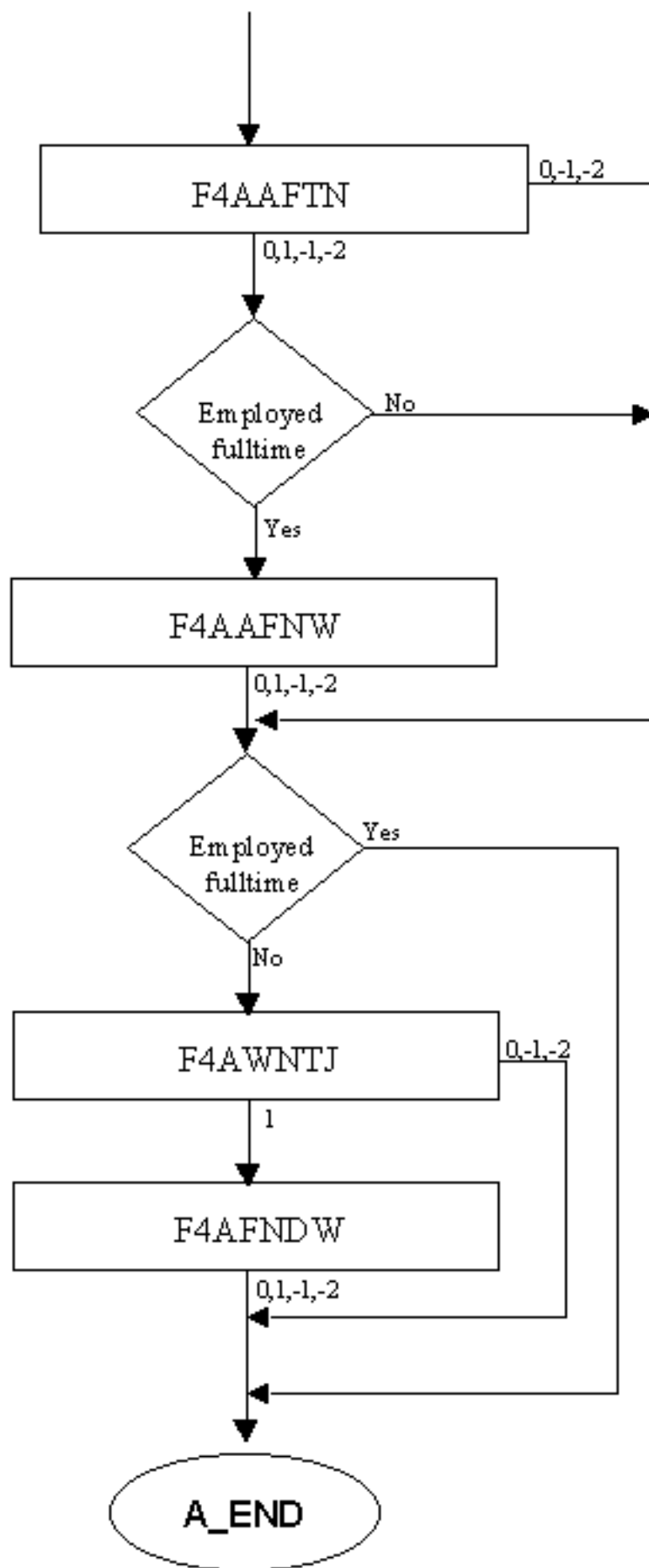
**CATI/CAPI Instrument Flow Charts  
November 14, 2000**



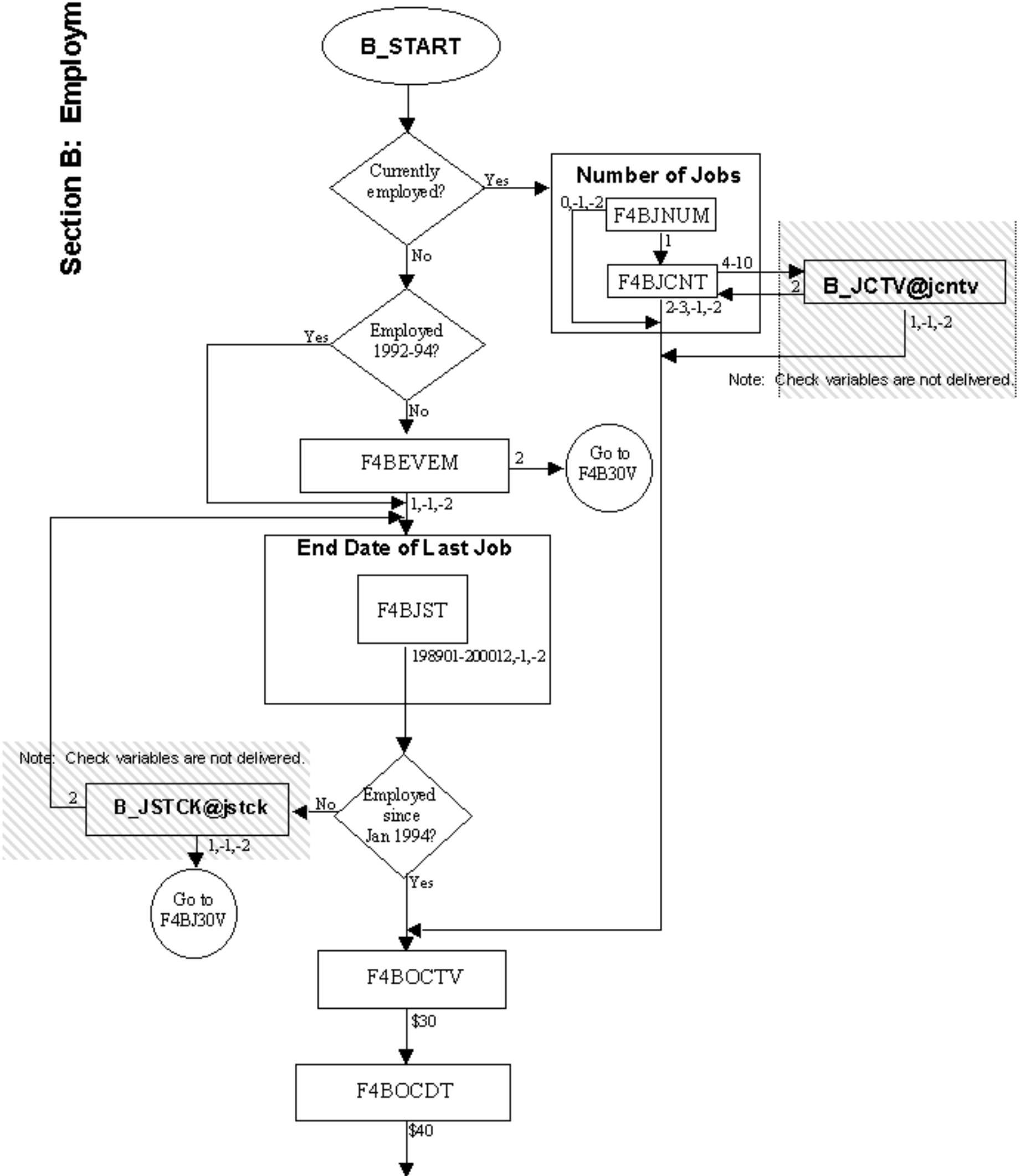
**Section A: Current Activities**

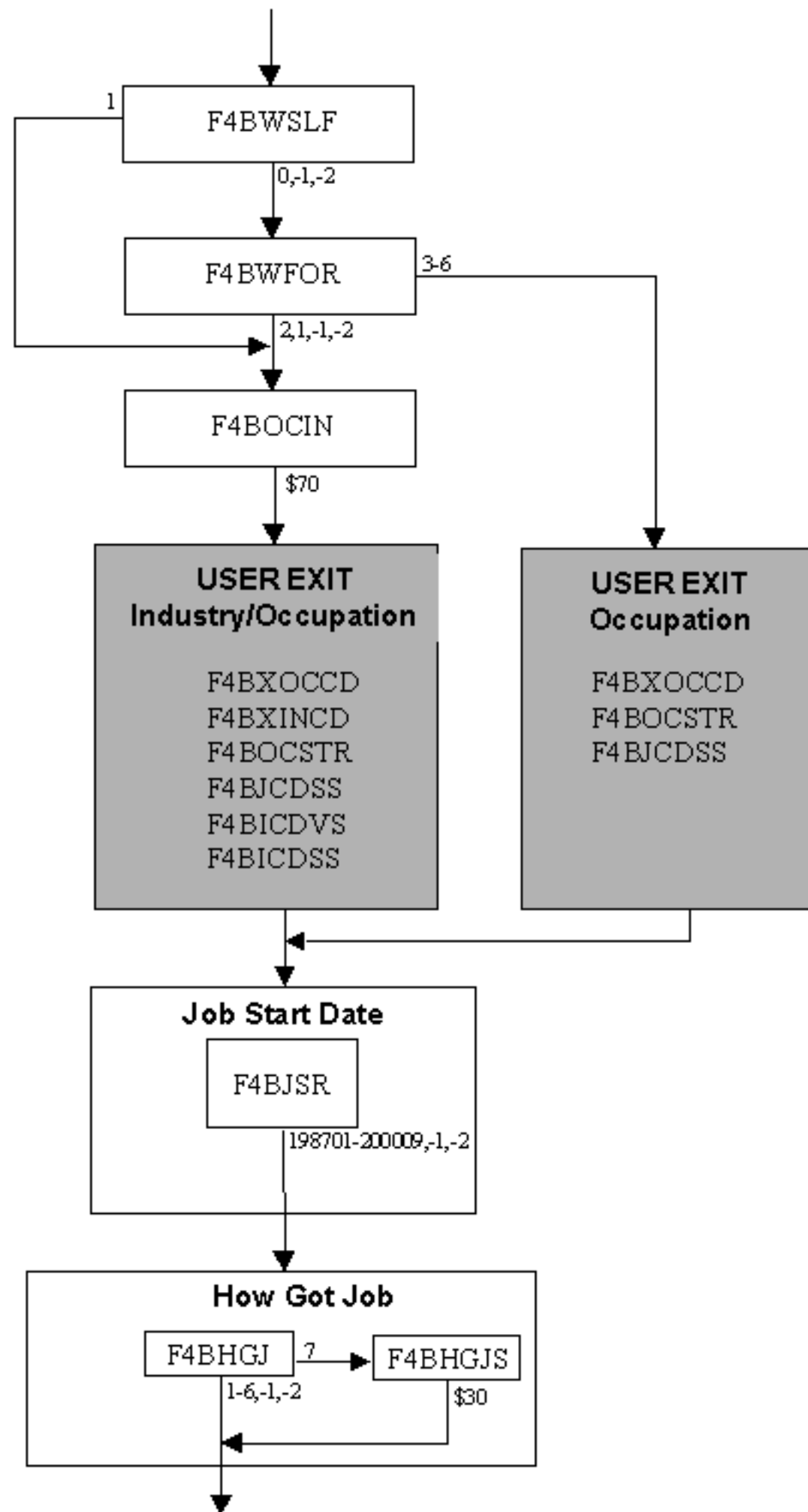




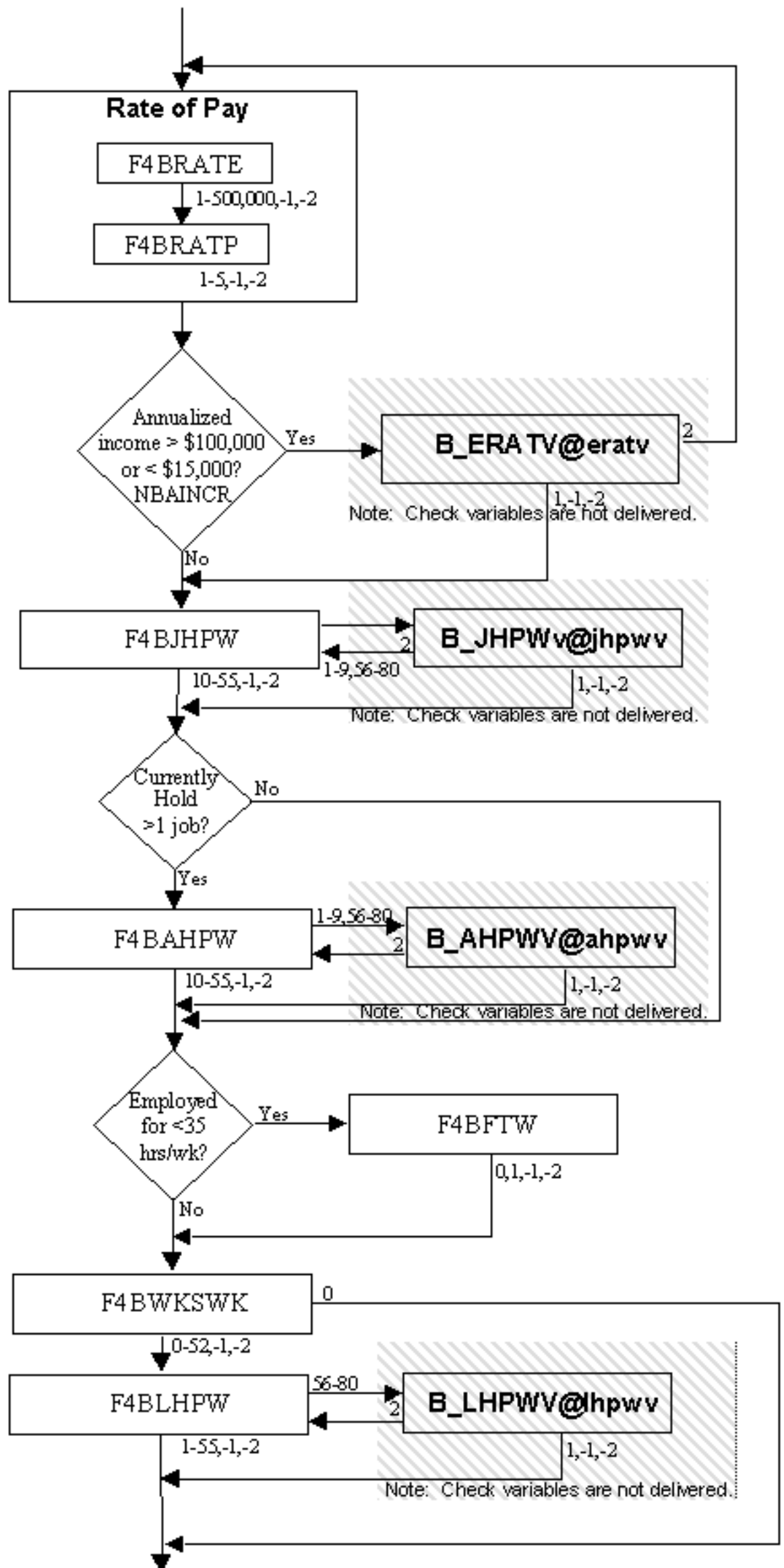


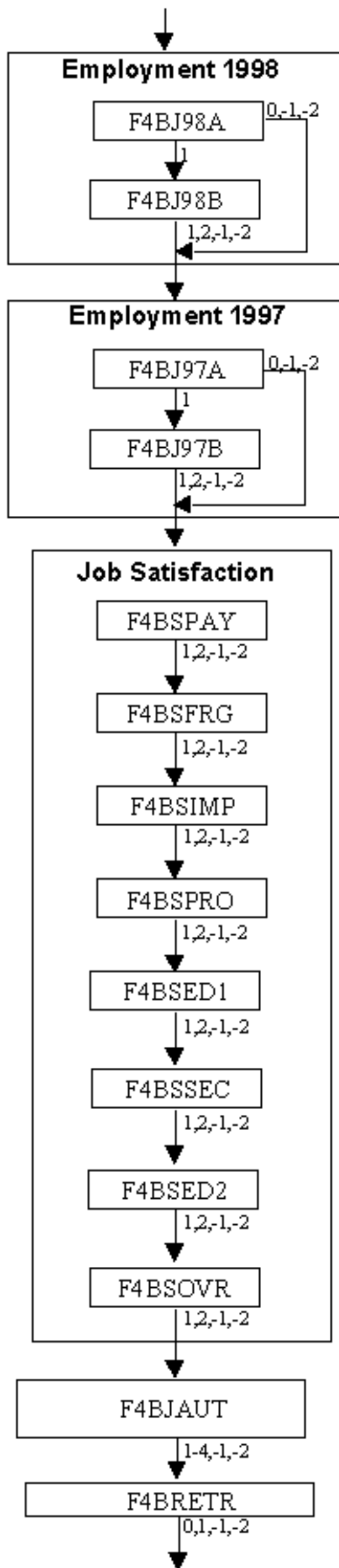
**Section B: Employment**

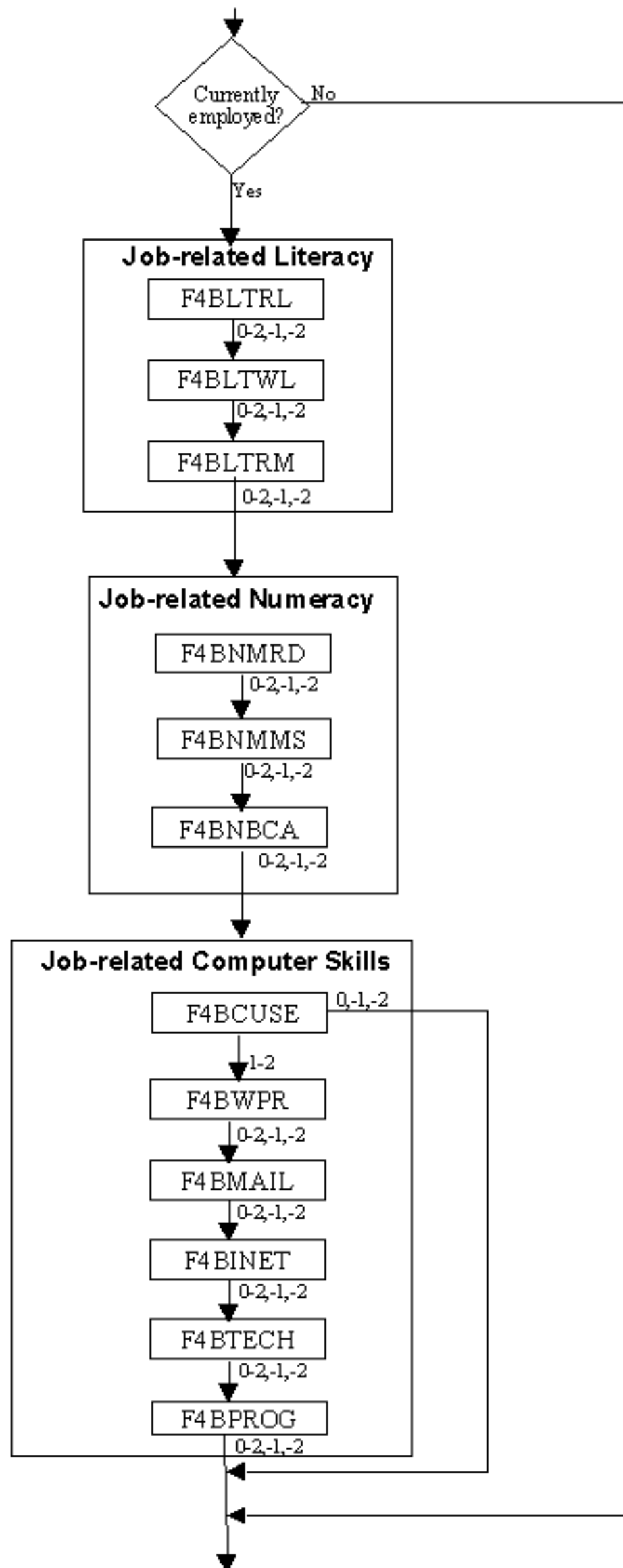


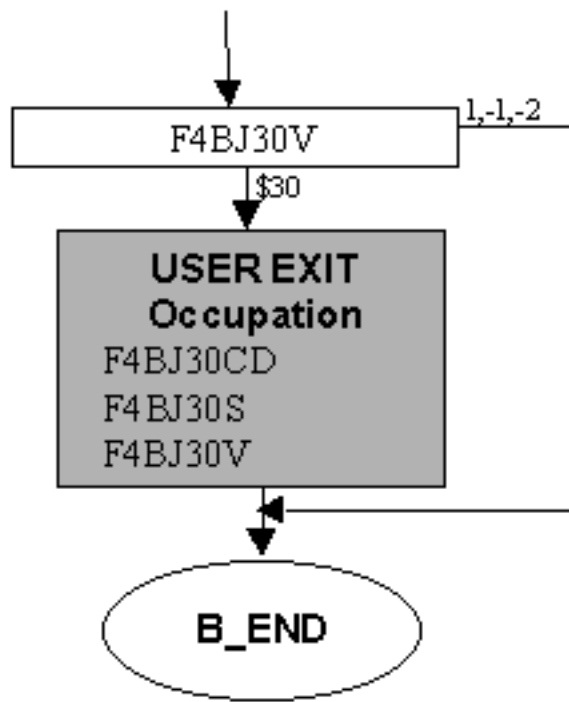




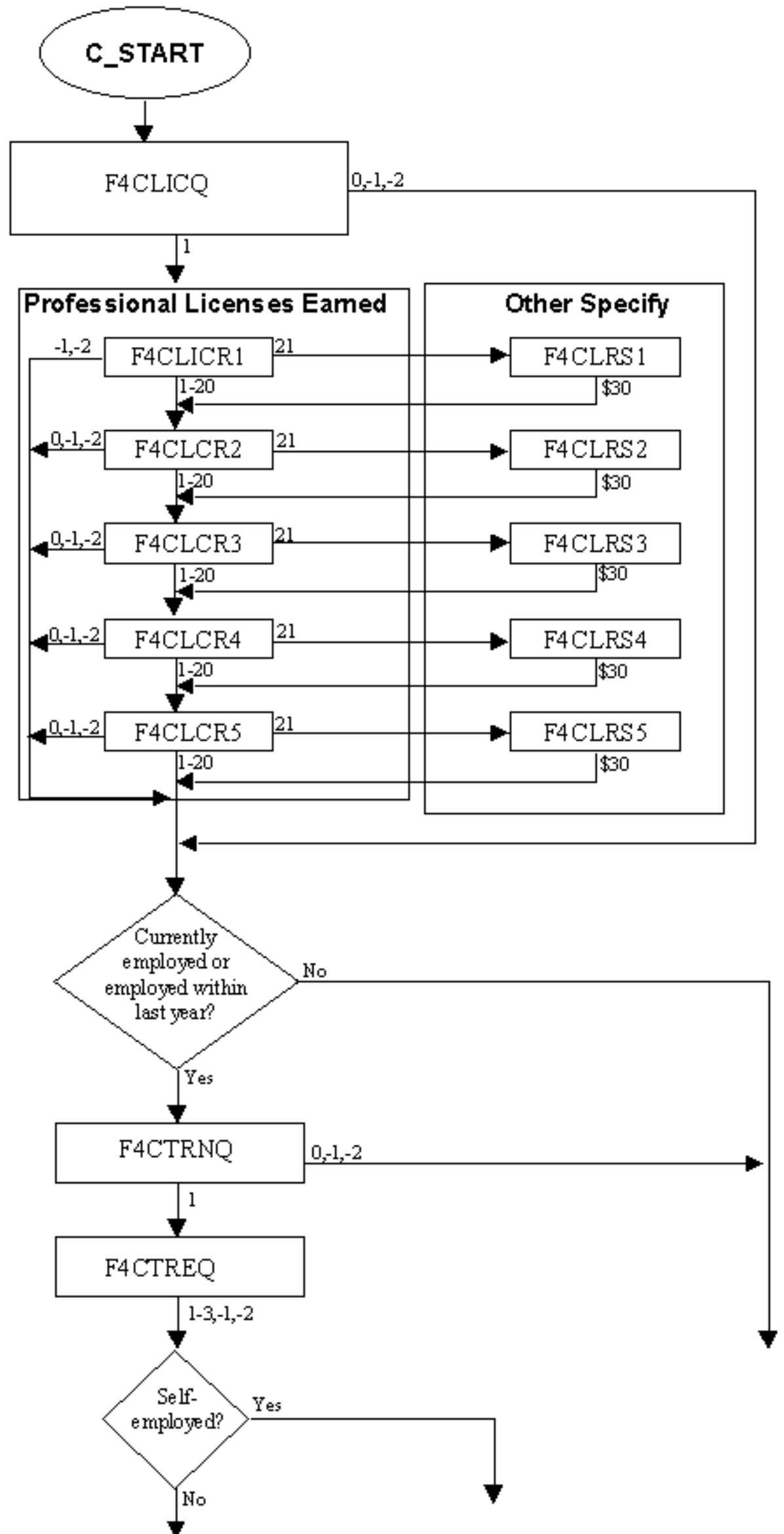


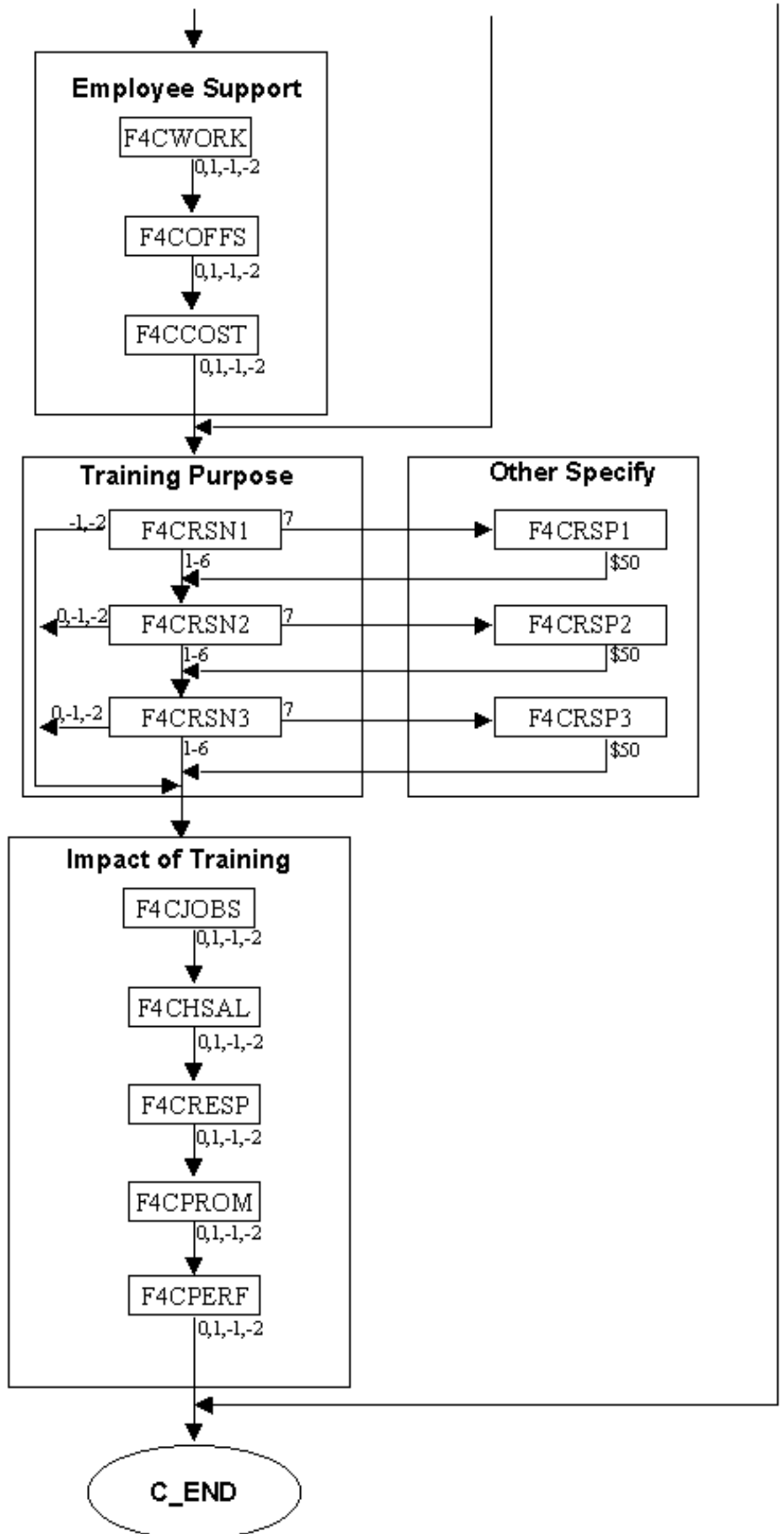




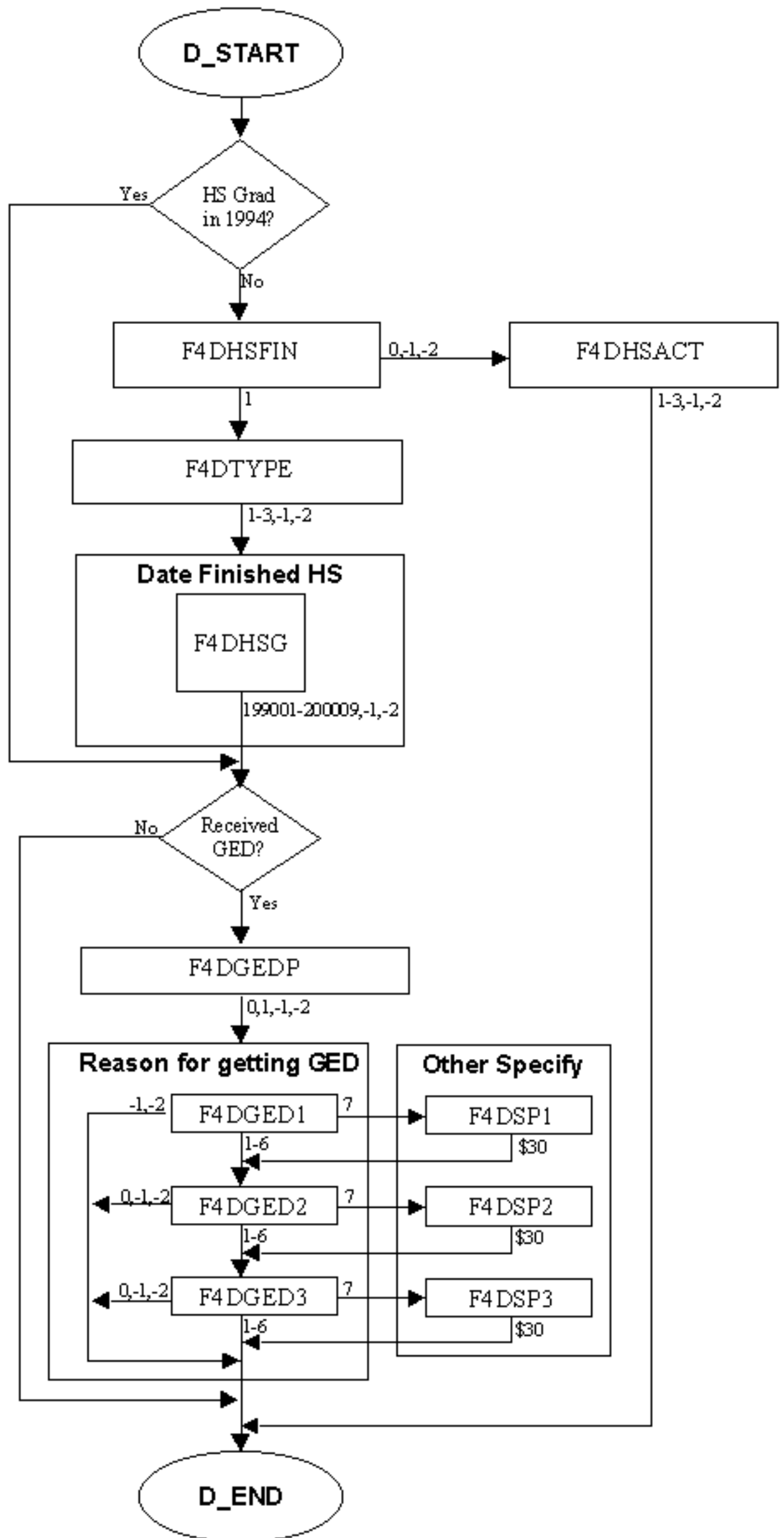


**Section C: Job-Related Training**

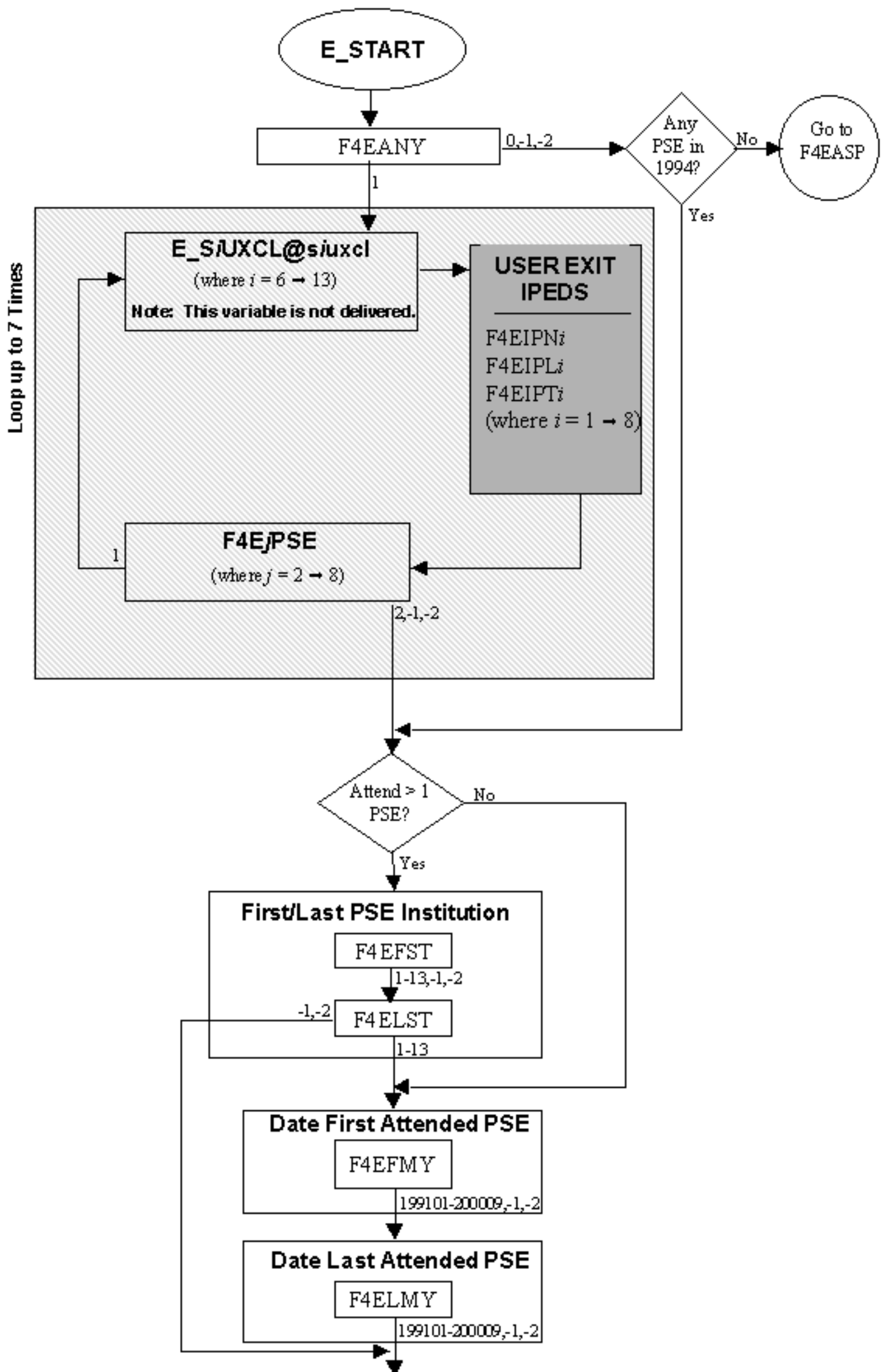




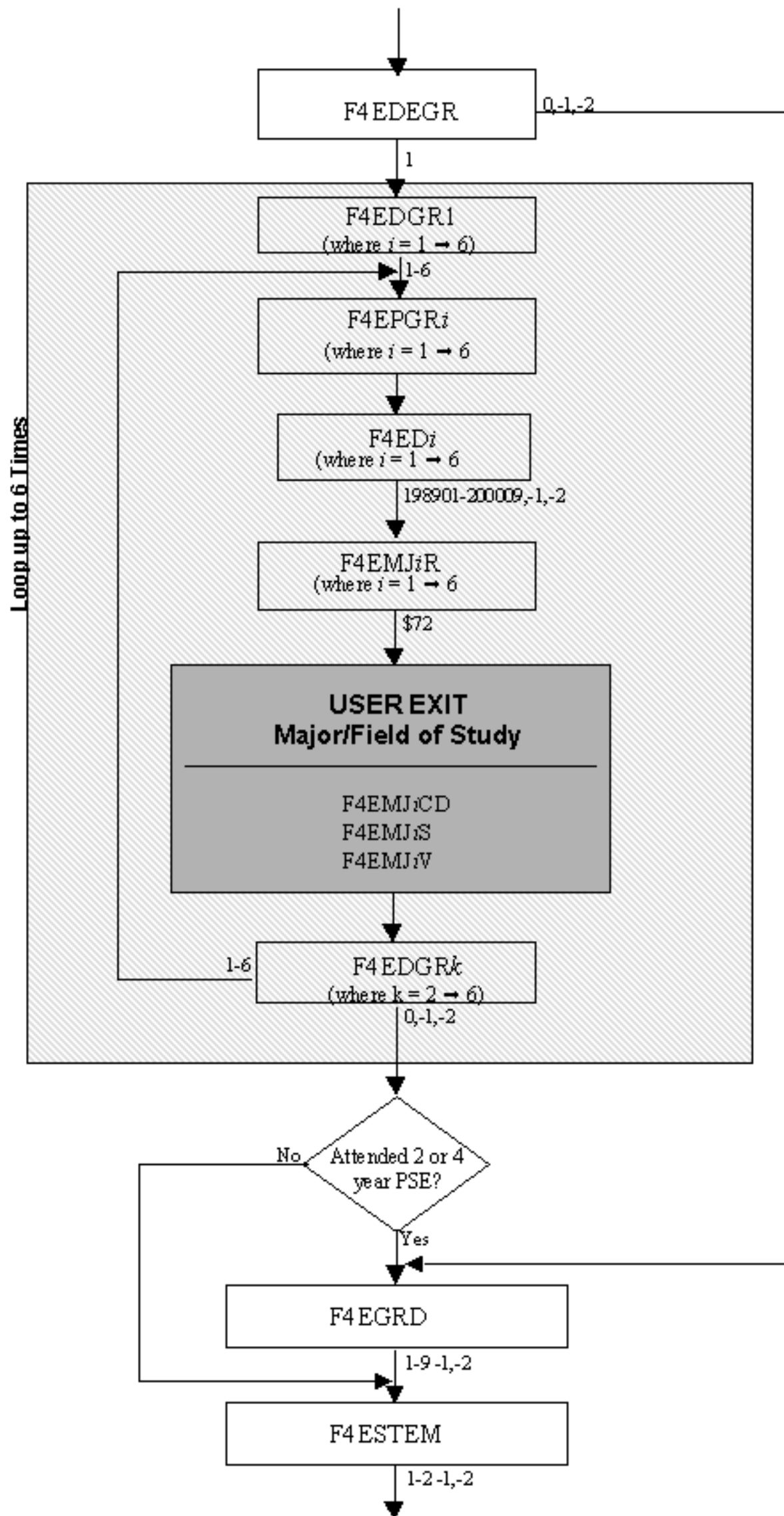
Section D: High School Completion

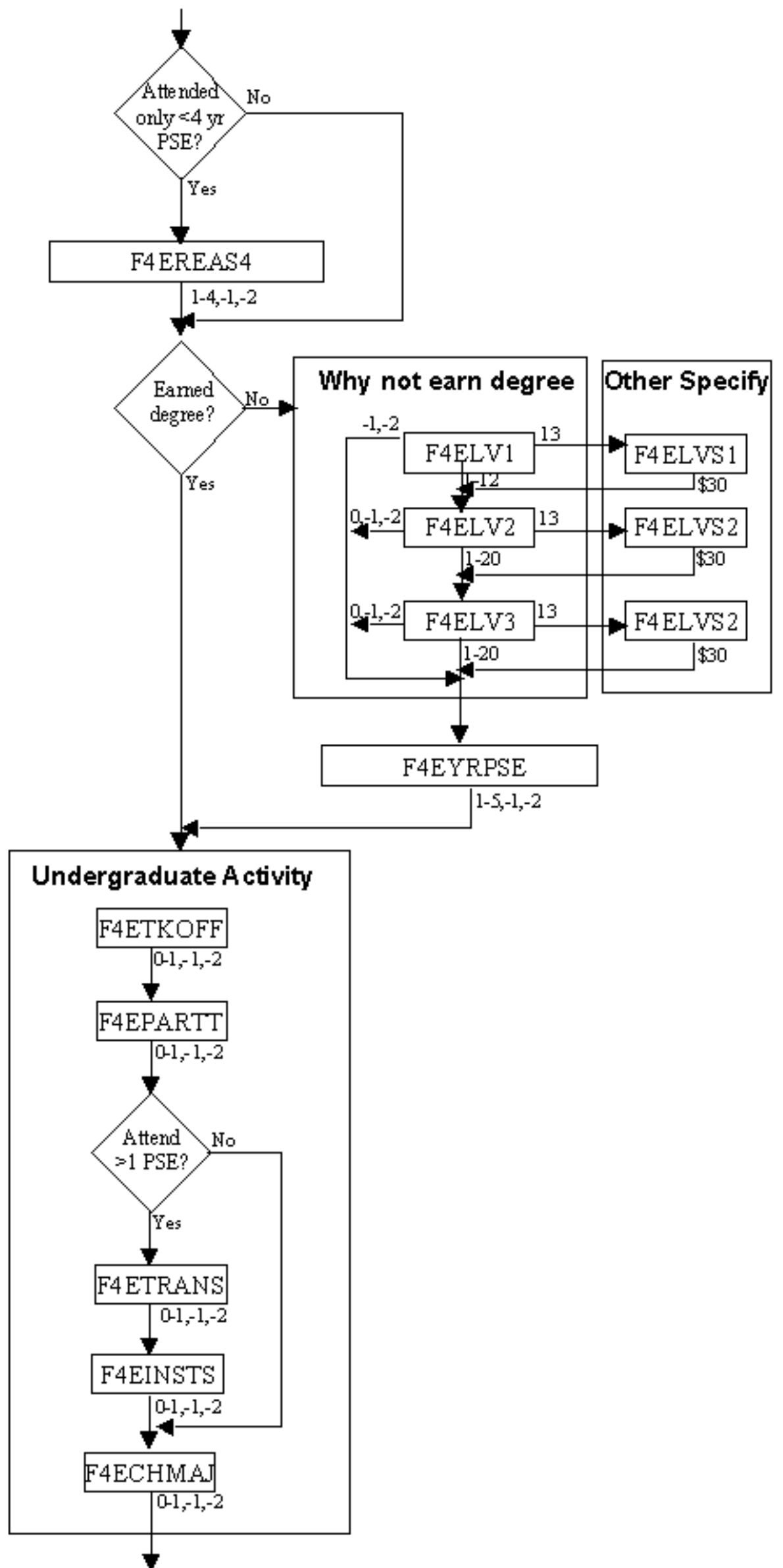


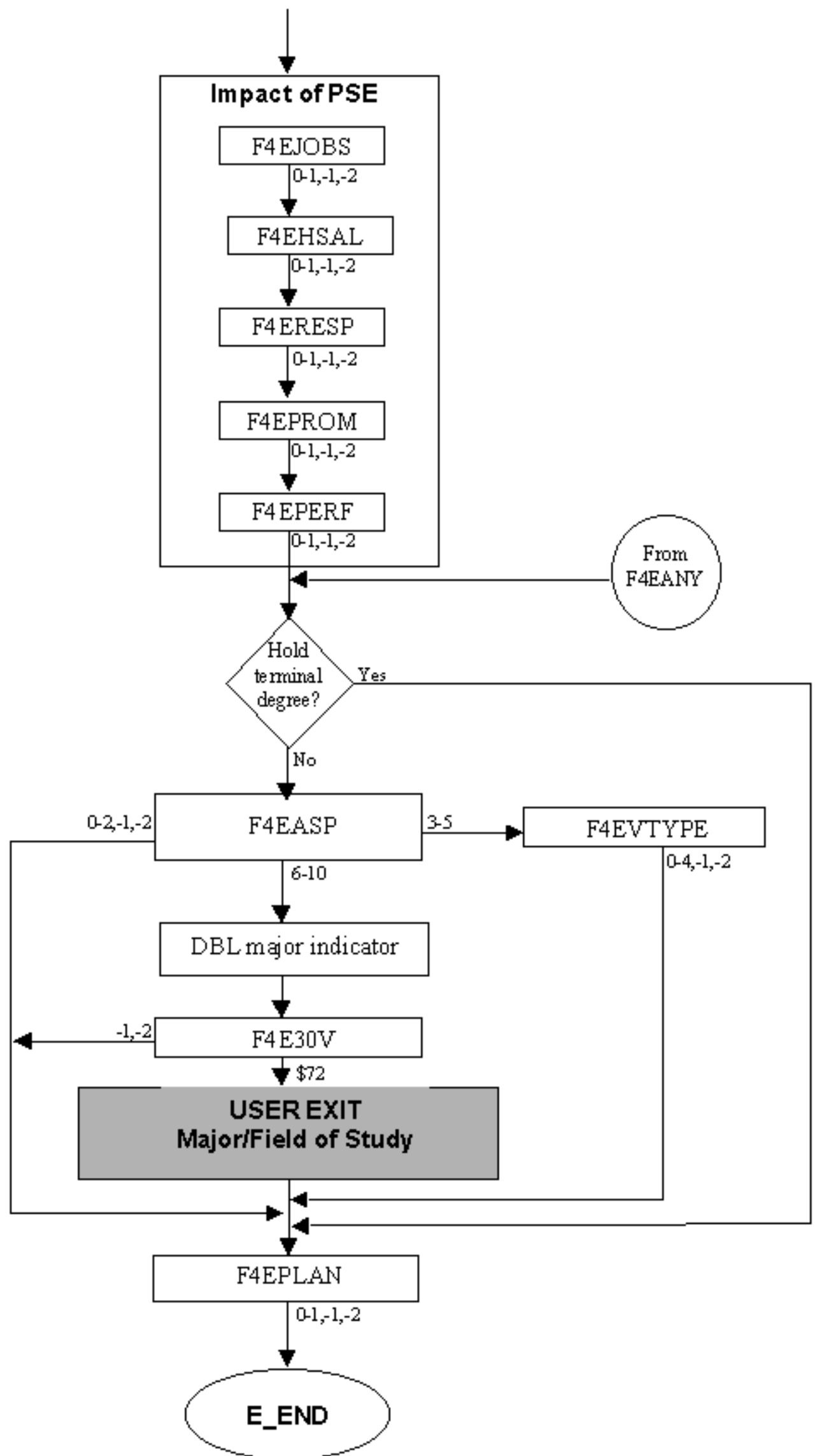
**Section E: Postsecondary Education**



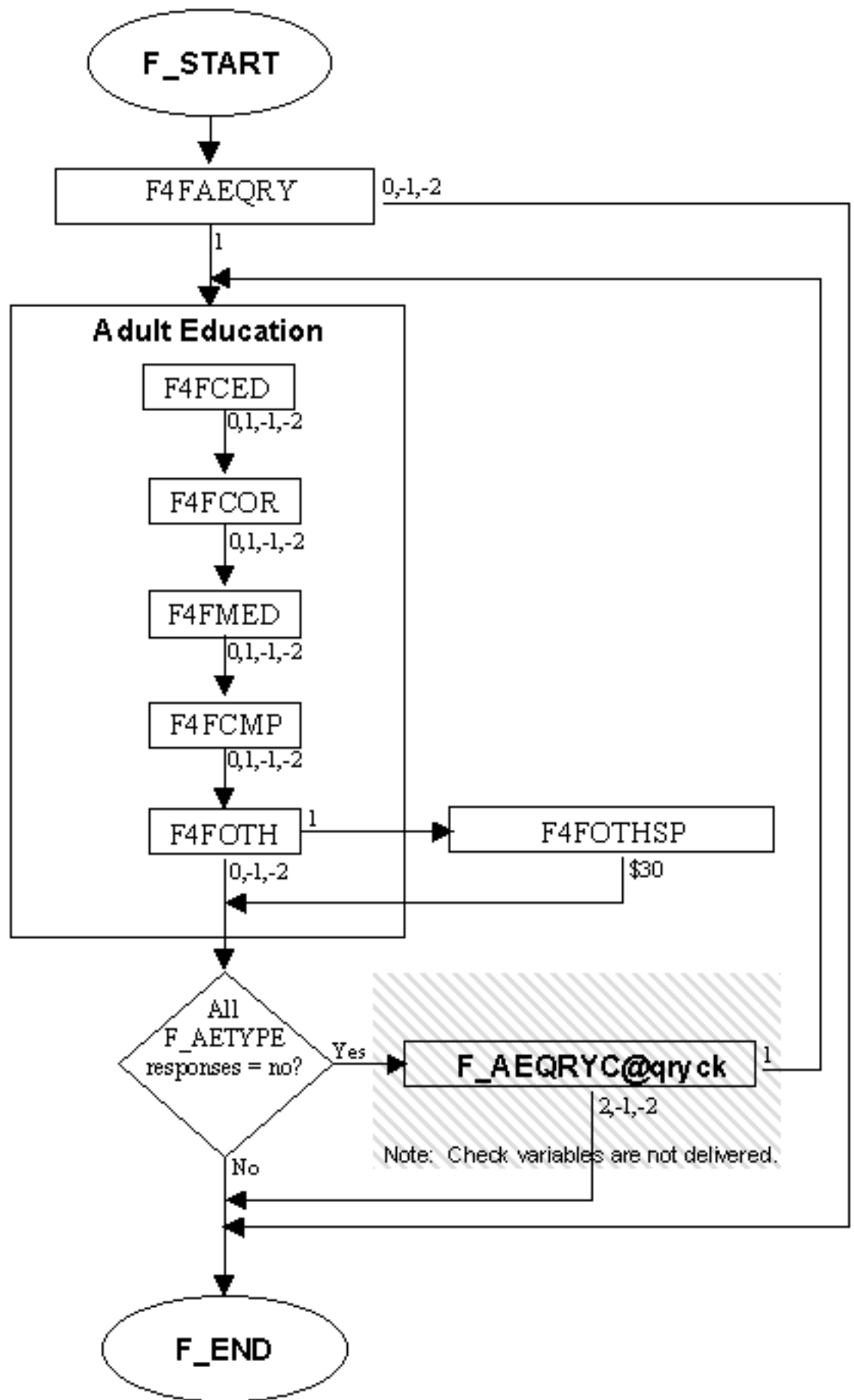




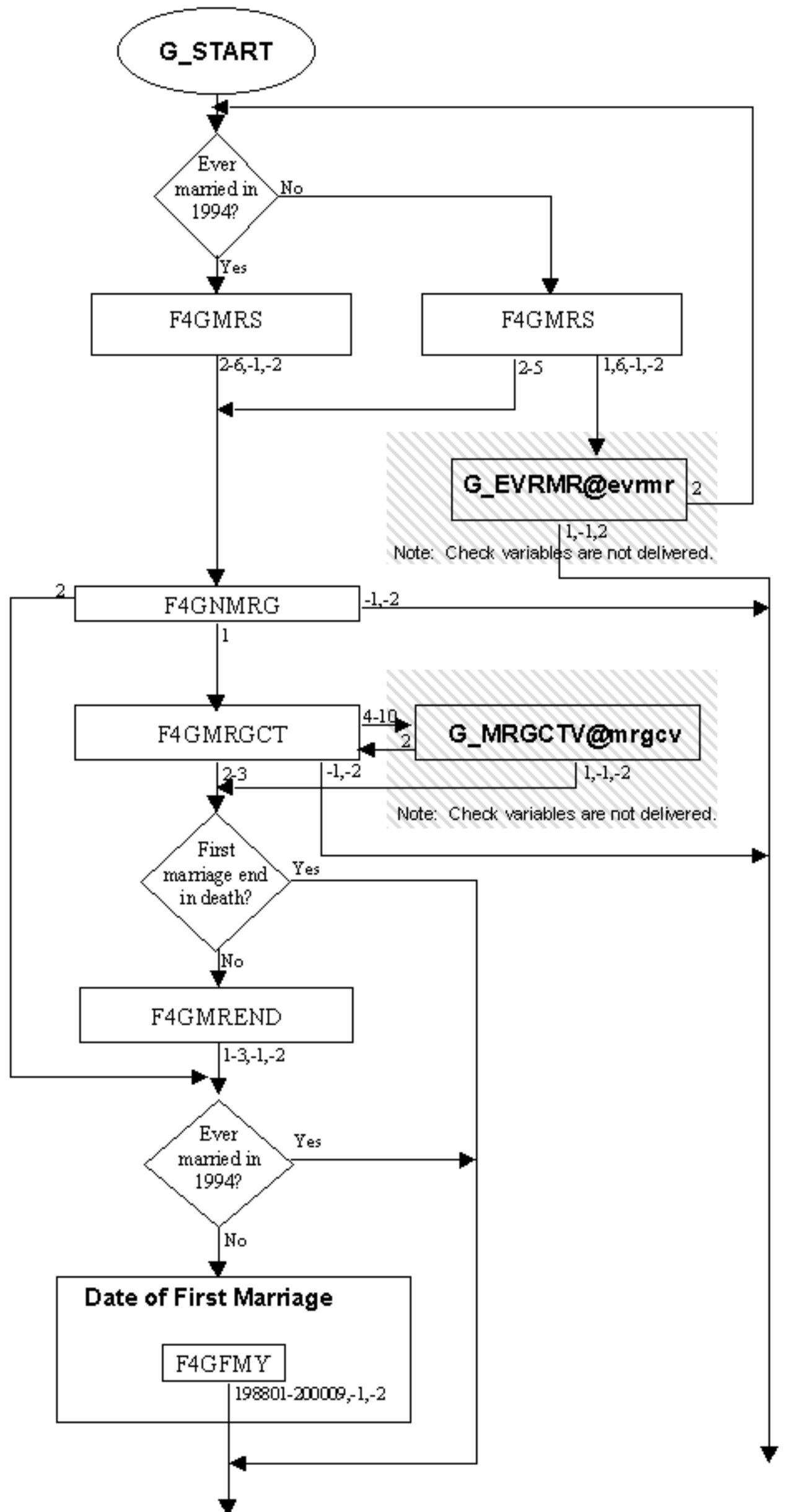


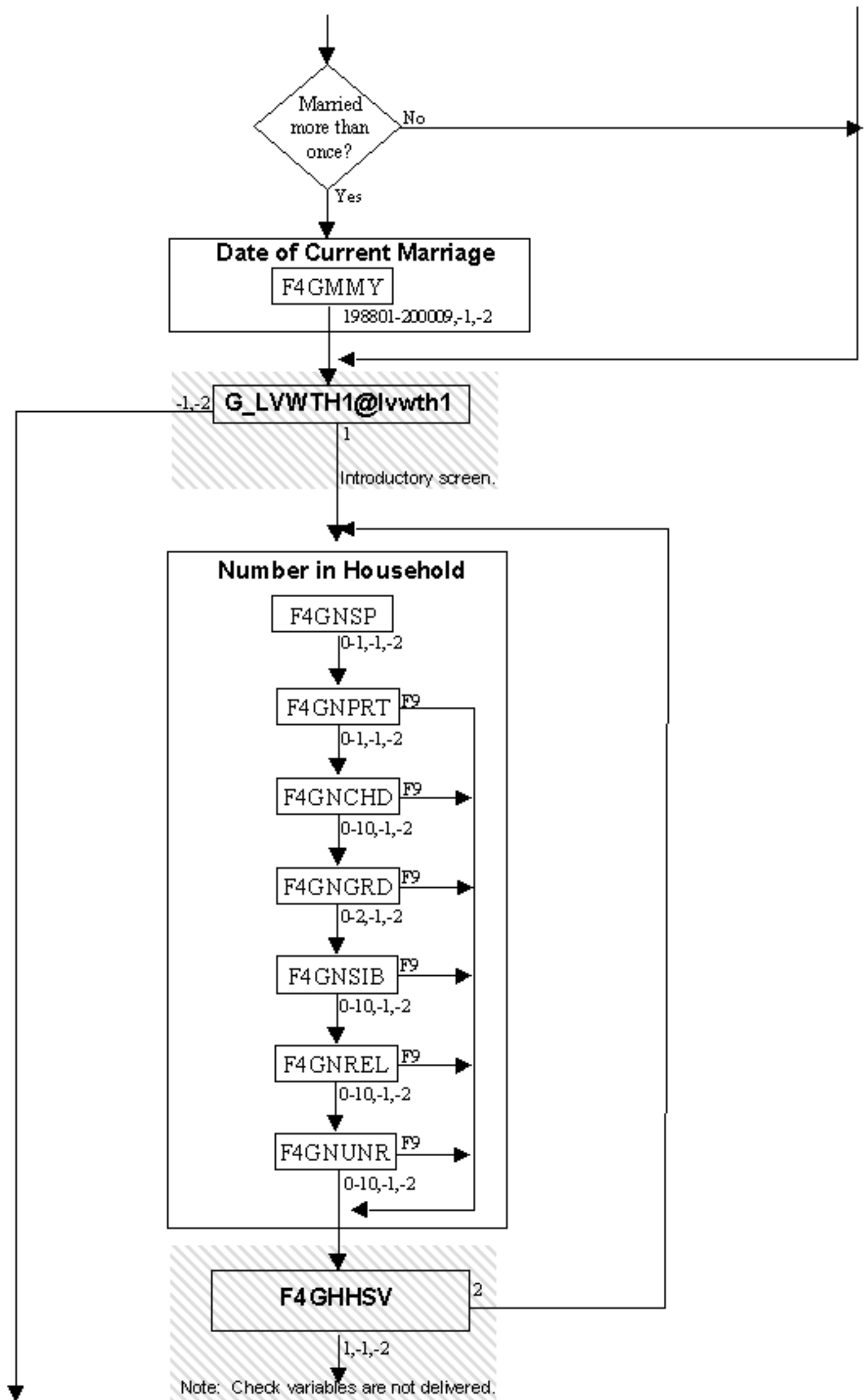


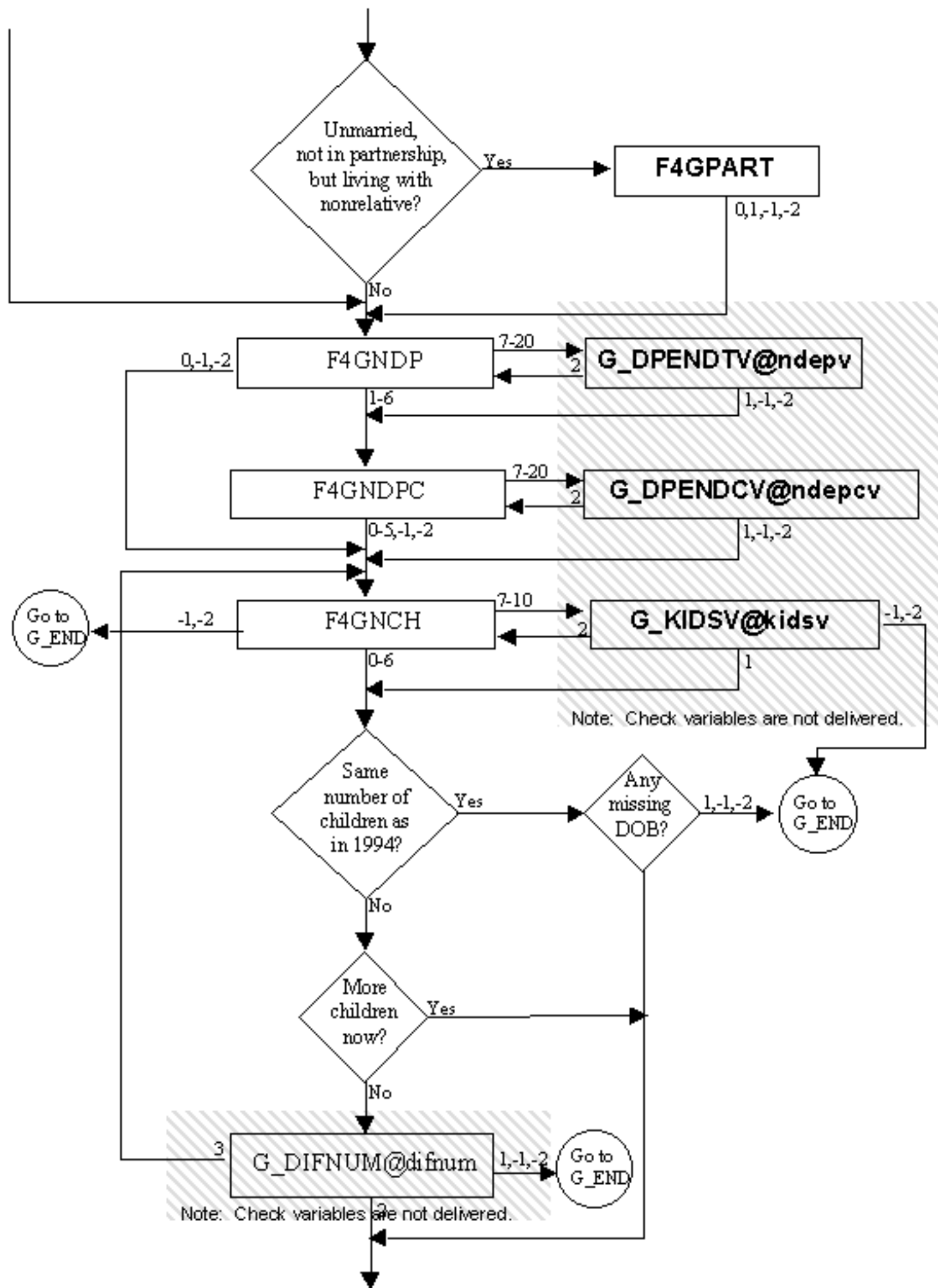
**Section F: Adult Education**

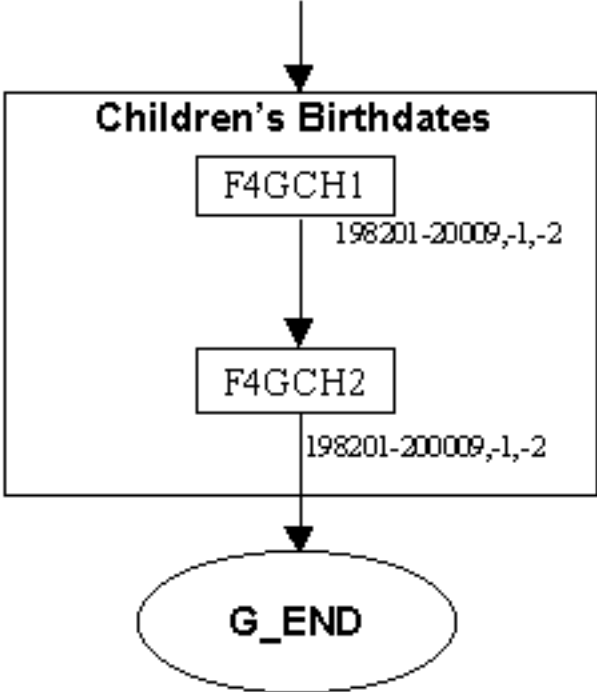


**Section G: Family Formation**



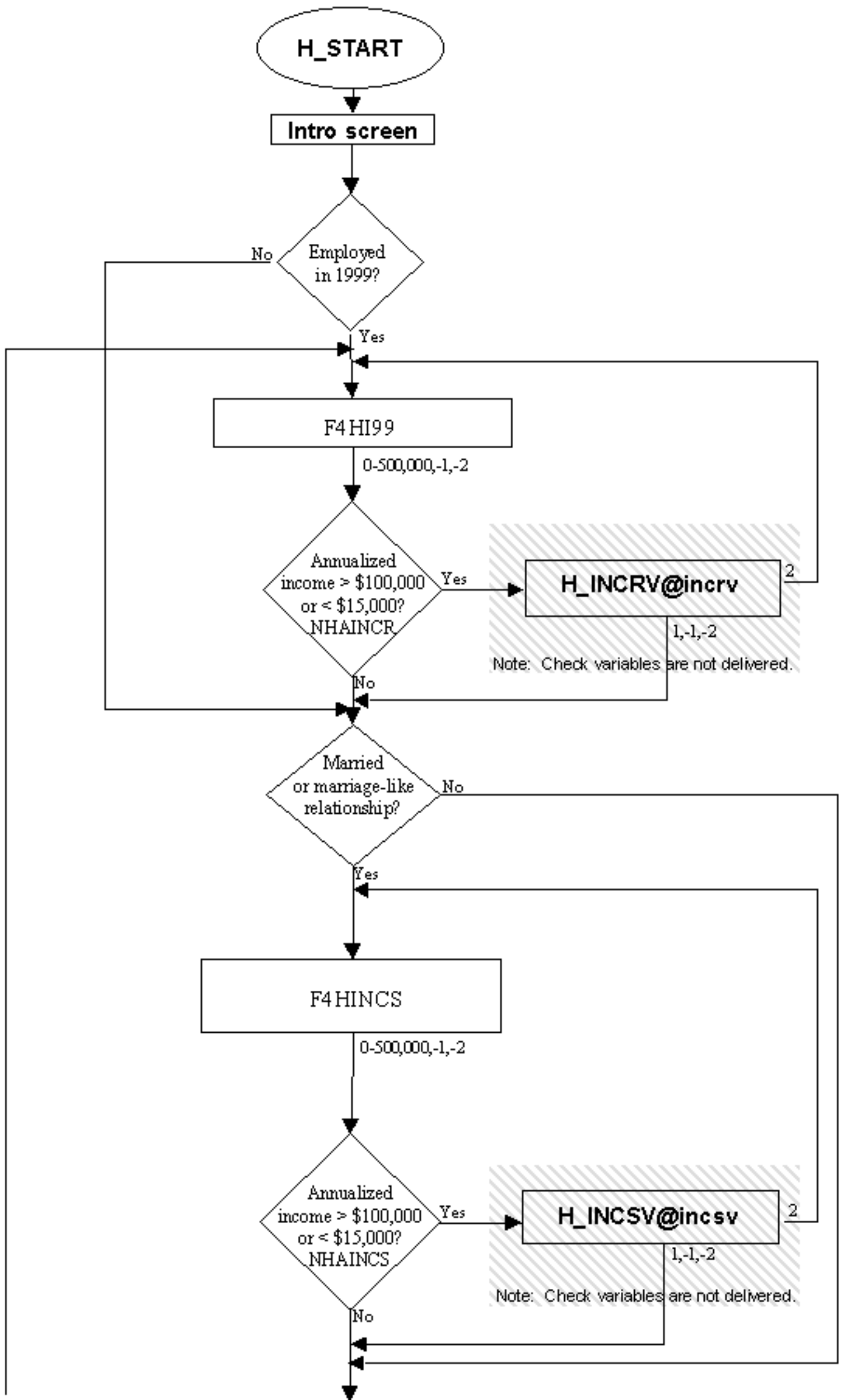


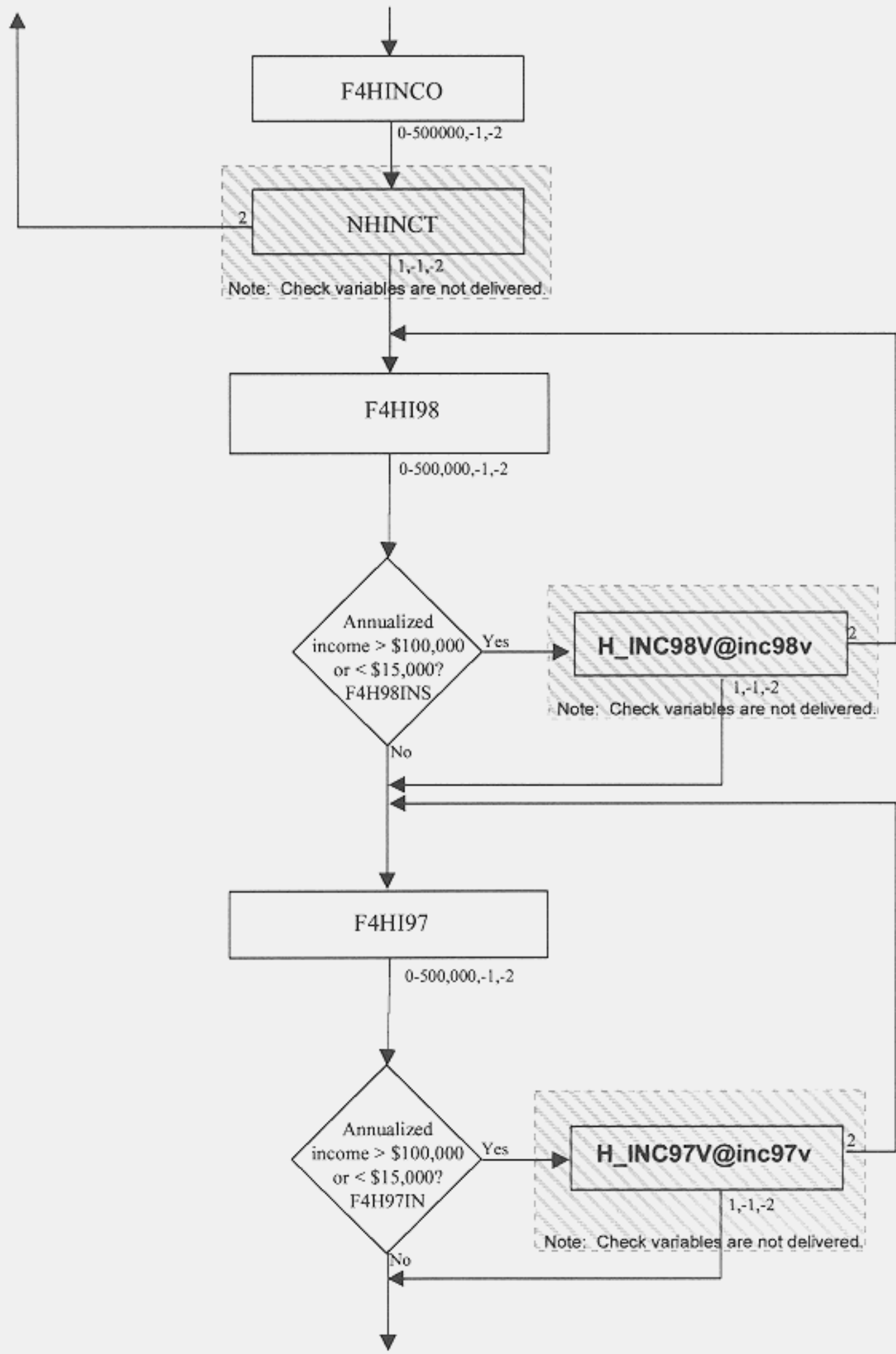


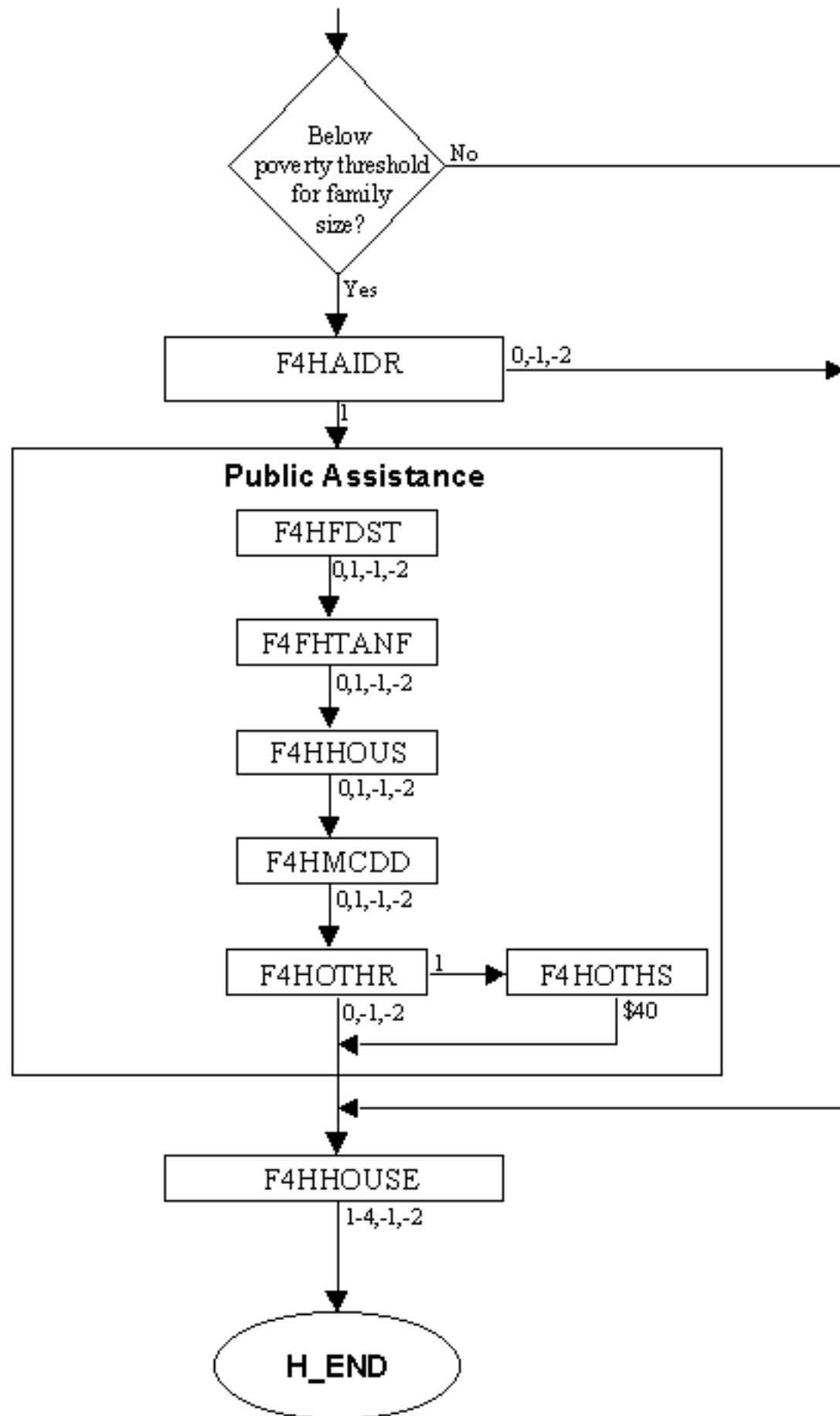




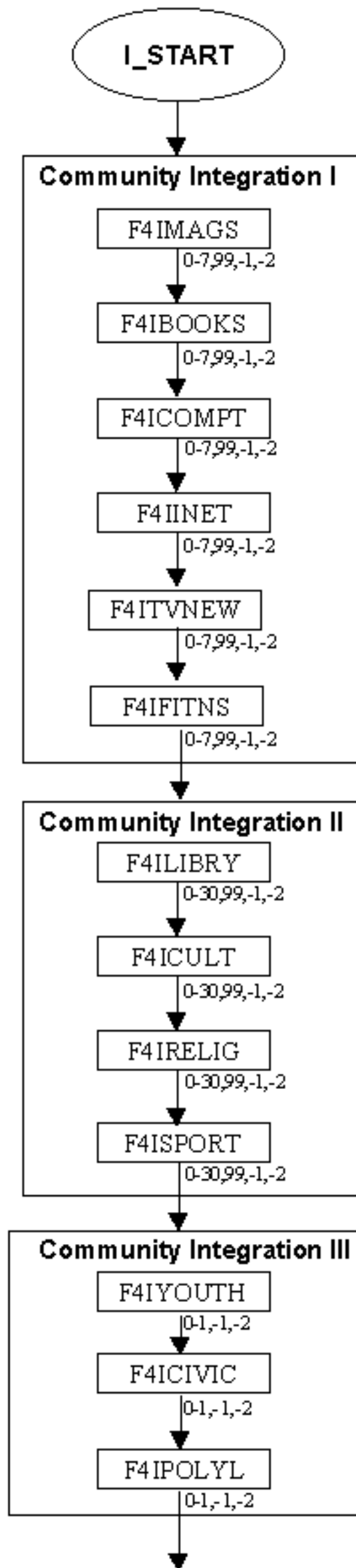
Section H: Income

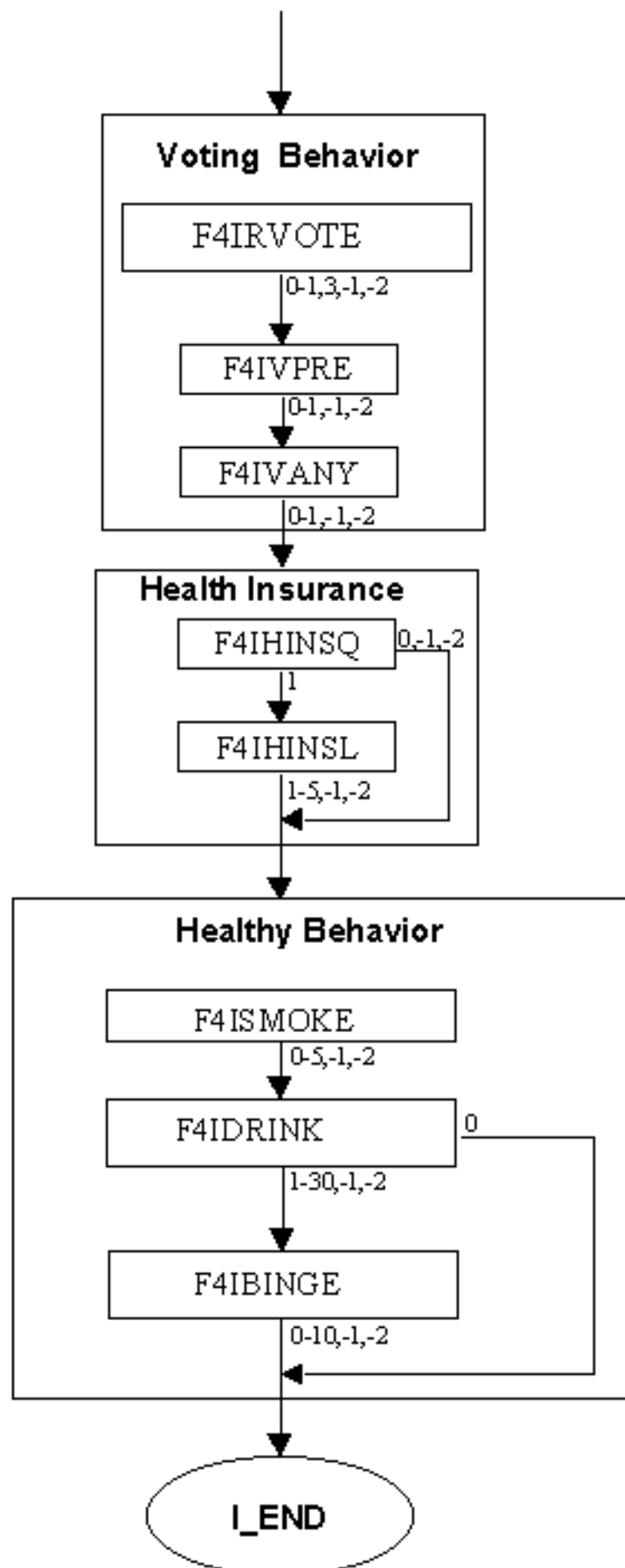






**Section I: Other Outcomes**





**Section J: Race-Ethnicity and Residence**

