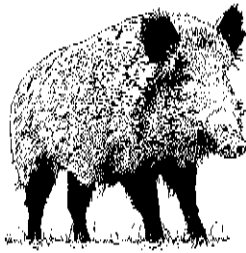




JUNIOR RANGER

We are glad you're here and are participating in the Junior Ranger program. This worksheet is designed to help you explore the visitor center and self-guided interpretive trail in the park and experience activities conducted by the park rangers and volunteers. Complete the booklet and you will earn your Junior Ranger Badge.

San Juan Island National Historical Park belongs to you. It was established to protect and preserve everything within its boundaries, as well as the idea that individuals and nations can settle their differences peacefully. As a Junior Ranger you can help others remember that this national park is for everyone to enjoy and protect.



What is important to you? What is worth preserving? What would life be like without wildlife, wildflowers, trees, clean lakes, oceans and streams? Why would anyone study a piece of broken pottery?

To search for answers, explore San Juan Island National Historical Park. You will find that nature is full of wonders worthy of your efforts.

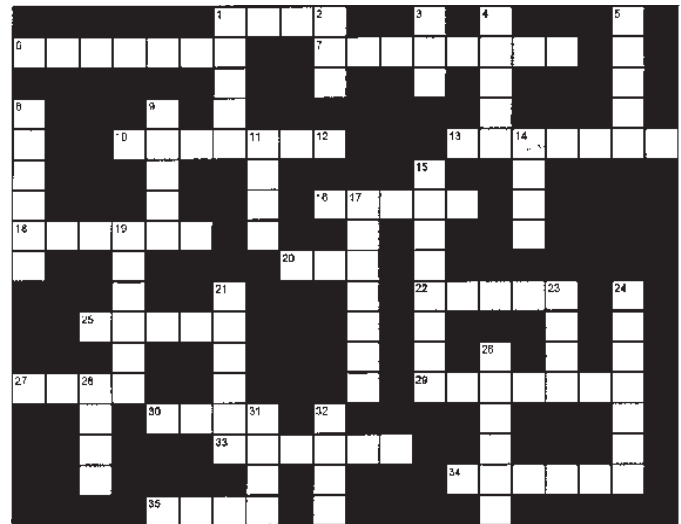
For example, at English Camp, you may spot an osprey pair tending their nest; or a harbor seal exploring Garrison Bay. The tide flats, meanwhile may reveal oysters, clams, mussel and cockle shells, while ospreys skim overhead.

Treasure Hunt

Find the following objects at English Camp and check them off. The barracks is a great place to start.

- Historic map of the Oregon Country
- Royal Marine's shako (hat)
- Iron bedstead
- Juniper trees
- Cisterns
- Headstones
- Monument commemorating peaceful resolution of boundary dispute.

Park Crossword



See Vocabulary on page 3 for clues.

Across

- 1 edible mollusk
- 6 to use again
- 7 object made or worked by humans
- 10 red barked tree
- 13 home to a plant or animal
- 16 a small, light boat
- 18 large bird of prey
- 20 female deer
- 22 to fit in
- 25 a small fruit
- 27 family group of whales
- 29 no longer exists
- 30 predator's victim
- 33 gnawing mammal
- 34 refuse heap from the past
- 35 plays role in natural plant cycles

Down

- 1 fragrant tree
- 2 guide
- 3 young fox or beaver
- 4 animal life
- 5 plant life
- 8 shallow pond
- 9 large bird of prey
- 11 killer whale
- 14 male deer
- 15 marine crustacean
- 17 flower-like sea creature
- 19 blackbirds
- 21 edible mollusk with irregular shell
- 23 small sea bird
- 24 fresh water supply
- 26 narrow waterway
- 28 largest wild mammal on San Juan Island
- 31 the past
- 32 plant with fronds

Matching

1. ____ Don't pick them.
 2. ____ Year Cutlar shot the Pig
 3. ____ Birds that sweep around visitor's feet
 4. ____ Date Royal Marines arrived at English Camp
 5. ____ Source of water for gardens
 6. ____ Okay to pick these
 7. ____ Loop holes
 8. ____ Bird nest overlooking parade ground
 9. ____ Year Royal Marines left San Juan Island
 10. ____ Delacombe
- A. Cisterns
 - B. 1859
 - C. Osprey
 - D. Black berries
 - E. Blockhouse
 - F. March 21, 1860
 - G. Barn swallows
 - H. Flowers
 - I. Second commandant
 - J. 1872

Use the English Camp Historic Guided Walk booklet and the official park map and guide to complete the activities on this page.

Questions:

1. How many historic buildings have been restored at English Camp?
2. What year was the photo taken of the first vegetable garden?
3. The commissary was the first building erected at English Camp. What was its use?
4. Who was English Camp's first commander?
5. Which direction is Young Hill from the parade ground?
6. How high is Young Hill?
7. The blockhouse was designed as a fortification. How was it actually used?
8. From what location at English Camp can I see Vancouver Island?
9. What body of water does English Camp front?
10. Where can I find the Royal Marine cemetery?
11. Where did the British ships dock?
12. The Bigleaf maple adjacent to the formal garden used to be the largest of its species in the world? Why did it drop to the third largest?



Did you know?

There are 388 National Park Service units in the United States.

Eighty-three million acres are available for public use.

More than 260 million people visited the national parks in 2005.

Yellowstone was the first national park, established in 1872.

San Juan Island NHP was established in 1966.

The bigleaf maple at English Camp was a seedling about 1670.

Haro Strait is deeper, wider and provides an easier passage than Rosario Strait.

The Strait of Juan de Fuca was once thought to be the Northwest Passage.

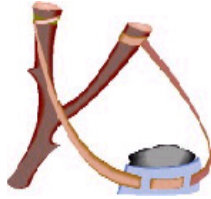
Active Pass, Satellite Bay and Mt. Constitution all are named for ships.



Vocabulary

Adapt: to fit in, change or evolve to survive in an environment.

Artifact: an object made or altered by human beings.



Bald eagle: our national bird is dark with a white-feathered head and tail. The Bald eagle experienced population decline due to habitat destruction and environmental contamination, but in recent years has begun to recover. They eat fish and other small animals. Paired eagles return to the same nest site each year.

Boundary: border; anything marking a limit.

Calcareous: composed of or containing calcium or limestone.

Carnivore: any animal that eats meat.

Cistern: an underground reservoir used to store fresh drinking water.

Clam: any of a large variety of hard-shelled bivalve mollusks, some of which live in the shallows of the sea; others live in fresh water.

Commissary: military storehouse

Conservation: controlled use and systematic protection of natural resources, such as forests, soil and water systems.

Extinct: a species that has vanished from existence.

Fauna: animal life

Fern: a plant characterized by fibrous roots and leaves called fronds. It usually thrives in the shade, does not flower and has spores instead of seeds.



Flora: plant life.

Food Chain: sequence of organisms starting with green plants in which each is food for higher and more complex organisms.

Habitat: the place where a plant or animal lives; an organism's home.

Lagoon: an area of shallow salt water separated from the sea by sand dunes. Also a shallow lake or pond, especially one connected with a larger body of water.

Limestone: rock consisting mainly of calcium carbonate: fossilized shells.

Madrona: The Pacific madrone or madrona is a broadleafed evergreen with reddish, papery bark and dark green, glossy leaves.

Midden: a refuse heap of people's garbage from the past. The shell midden at English Camp is made of clam shells.

Mollusk: large group of marine invertebrates including oysters, clams, mussels, snails, whelks, etc. Typically having a soft unsegmented body enclosed in a calcareous shell.

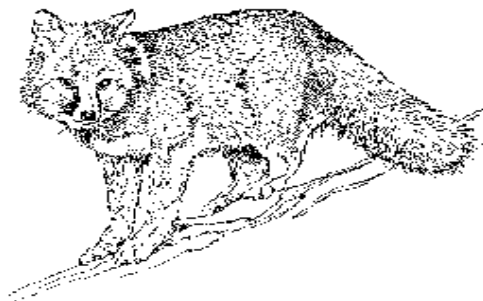
Organism: any living thing.



Osprey: a large bird of prey that plunges feet first into the water to catch its prey. Also called the "fish hawk." It is affected by chemical sprays just like eagles.

Pollution: contamination of soil, air or water.

Predator: Any animal that hunts live animals for food.



Preservation: A process of saving something in its natural state; to keep or maintain intact.

Prey: a predator's victim.

Recycle: to use over again.

Redoubt: an earthen fort.

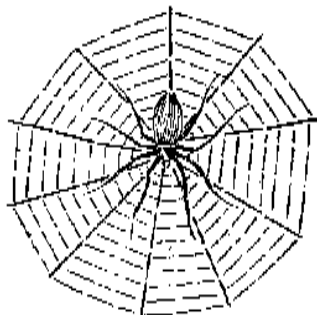
Strait: a narrow waterway connecting two large bodies of water.

Tern: graceful seabird.



Look and listen for surprises throughout the island.

Black-tailed deer
 Whale's blow
 Seals lying on rocks
 Black locust trees
 Red-breasted sapsucker holes in tree
 Slug
 Blue heron
 Ripe berry
 Red fox
 Goldfinch that says "potato chip"
 Clamshell
 Canada Goose
 View of Mt. Baker
 Sword fern
 Spiderweb



English Camp's rock walls on Officers' Hill were constructed by hand by the Royal Marines. The primary purpose was to create terraces where none existed before. The marines would erect the walls stone by stone, then infill the area with wheel barrows of clam shells and dirt from the parade ground. The terraces accommodated officers' quarters, a carriage house and even a tennis court. How many rock walls did you find on the hill? _____. Where do you think the tennis court is located? _____.



Officers' Hill, circa 1870.

Things to do in the Park

Hike
 Pick certain berries
 Observe flowers and trees
 Pick up shells
 Study artifacts in museums
 Go back in time, pretend you are there
 Notice texture and shapes of driftwood
 Boat and kayak
 Picnic
 Observe eagles, osprey, gulls
 Observe deer, fox, snakes, rabbits
 Observe whales, seals, porpoises, otters
 Observe crabs, clams and barnacles
 Watch a sunset
 Look at the stars

Answers to Questions (page 2)

1. Four 2. 1860 3. Storehouse 4. Capt. George Bazalgette 5. East 6. 650 feet 7. Guardhouse 8. Commandant's terrace 9. Garrison Bay 10. Young Hill trail 11. Dock adjacent to formal garden 12. It lost a portion of its crown (a major limb) to a lightning strike.

Key to Matching

1-H, 2-B, 3-G, 4-F, 5-A, 6-D, 7-E, 8-C, 9-J, 10-I

Crossword Answer

