



Introduction & NSF Overview

Dr. Deborah L. Crawford
Deputy Assistant Director
Directorate for Computer & Information
Science and Engineering

April 13, 2007

Miami, FL

NSF - HSI Workshop



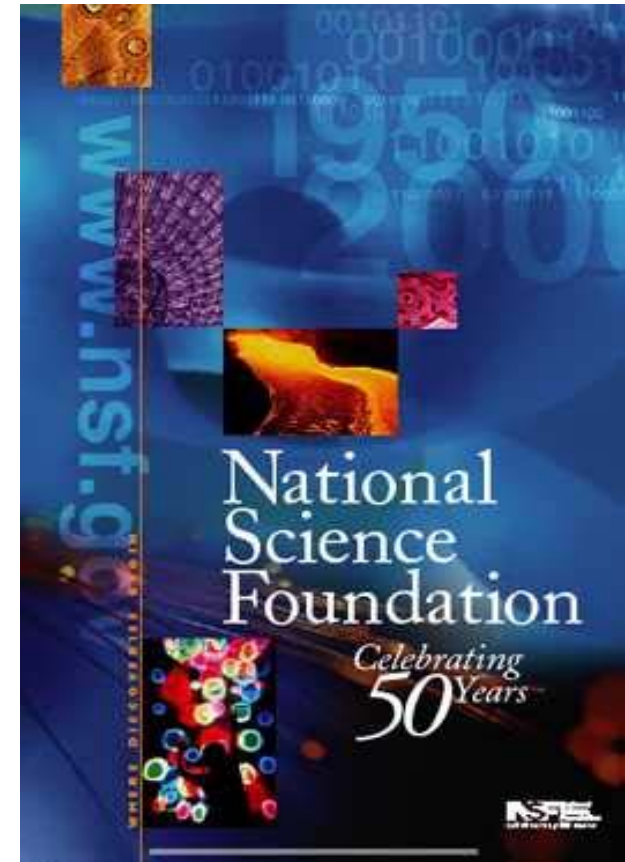
Main Topics

- About NSF
- Current Federal Budget Context
- Current Support for Minority Serving Institutions
- Proposal Funding Trends
- Programmatic Opportunities



Origins of NSF

- “The Government should accept new responsibilities for promoting the flow of scientific knowledge and the development of scientific talent in our youth.”
 - Science, The Endless Frontier, 1945
- 1950: Bill Approved & Signed by Truman





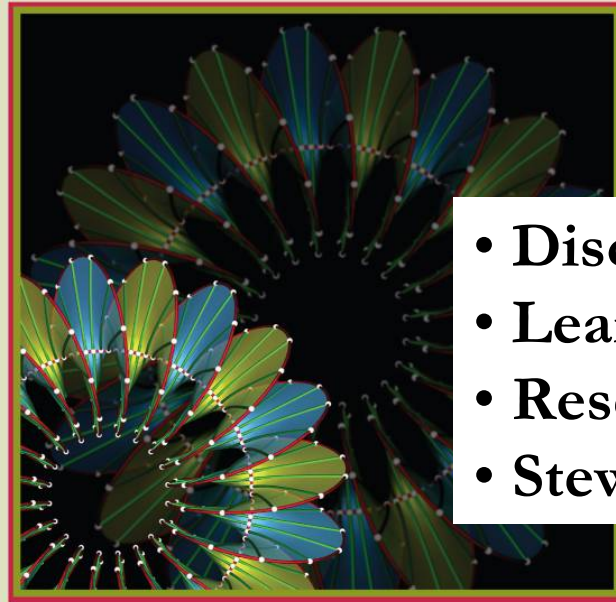
NSF Act of 1950

- “To promote the progress of science...”
- NSB (24) and 1 Director, appointed by the President
- Encourage & develop a national policy for the promotion of basic research and education in the math, physical, medical, biological, engineering and other sciences
- Initiate & support basic science and engineering
- Evaluate the research programs undertaken by agencies of the Federal government
- Provide information for S&E policy formation



National Science Foundation

INVESTING IN AMERICA'S FUTURE



- Discovery
- Learning
- Research Infrastructure
- Stewardship

STRATEGIC PLAN

FY 2006-2011



NSF Vision

**Advancing discovery, innovation and
education**

**beyond the frontiers of current knowledge, and
empowering future generations in science and
engineering**

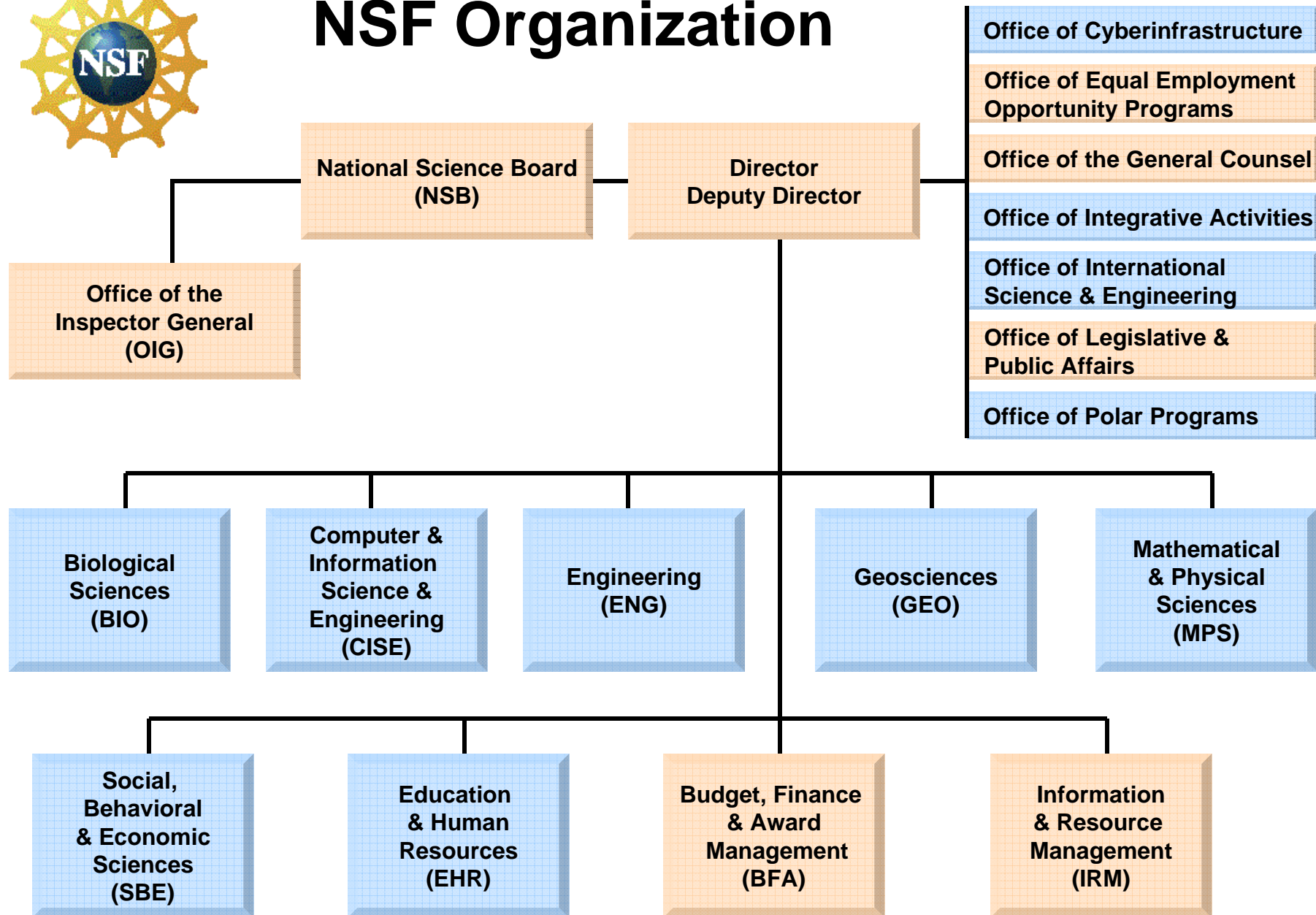


NSF in a Nutshell

- Independent Agency
- National Science Board
- Supports basic research & education
- Uses grant mechanism
- Use of Rotators/IPAs
- Highly automated
- Discipline-based structure
- Cross-disciplinary opportunities



NSF Organization



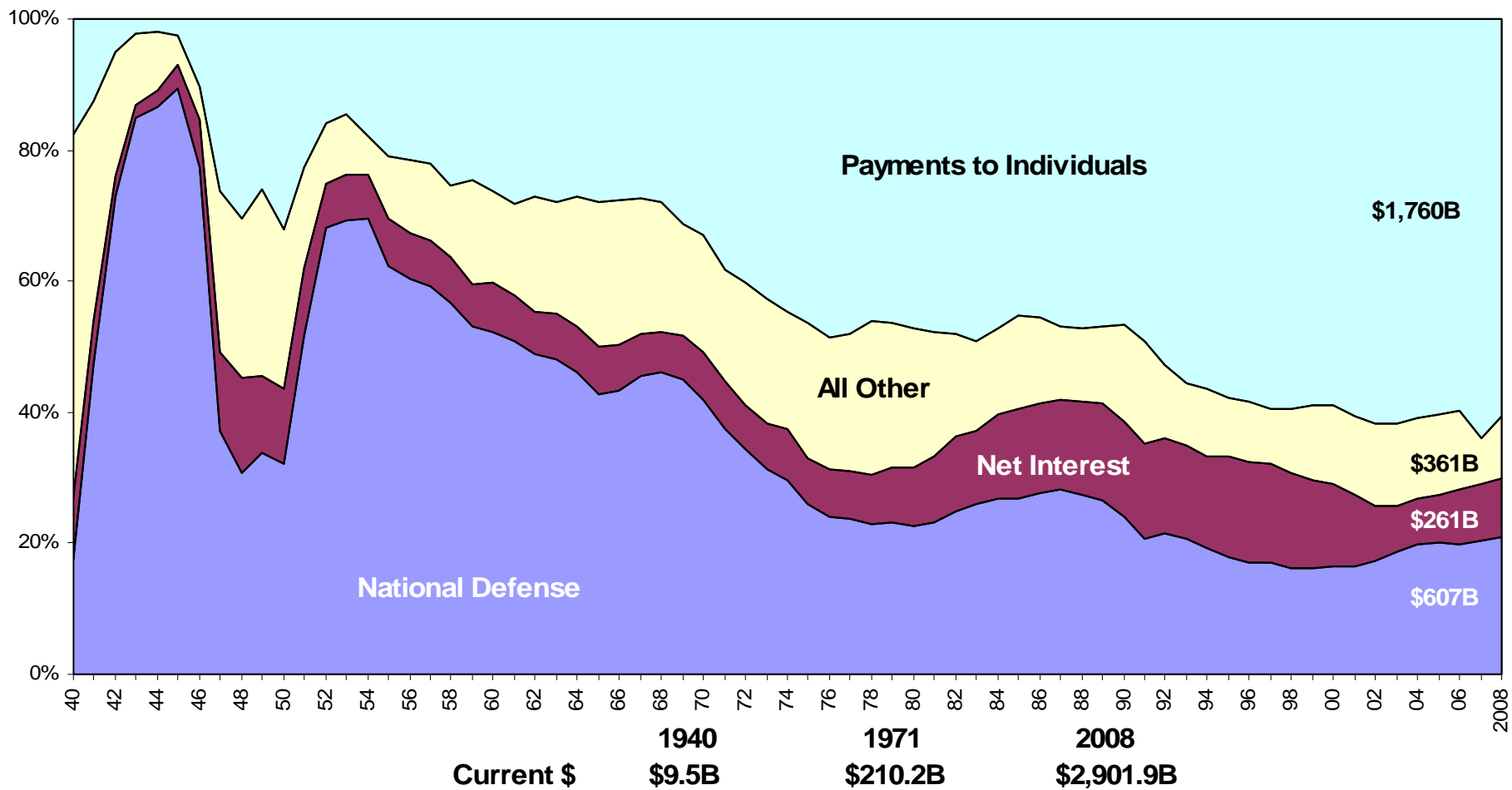


Current Federal Budget Context



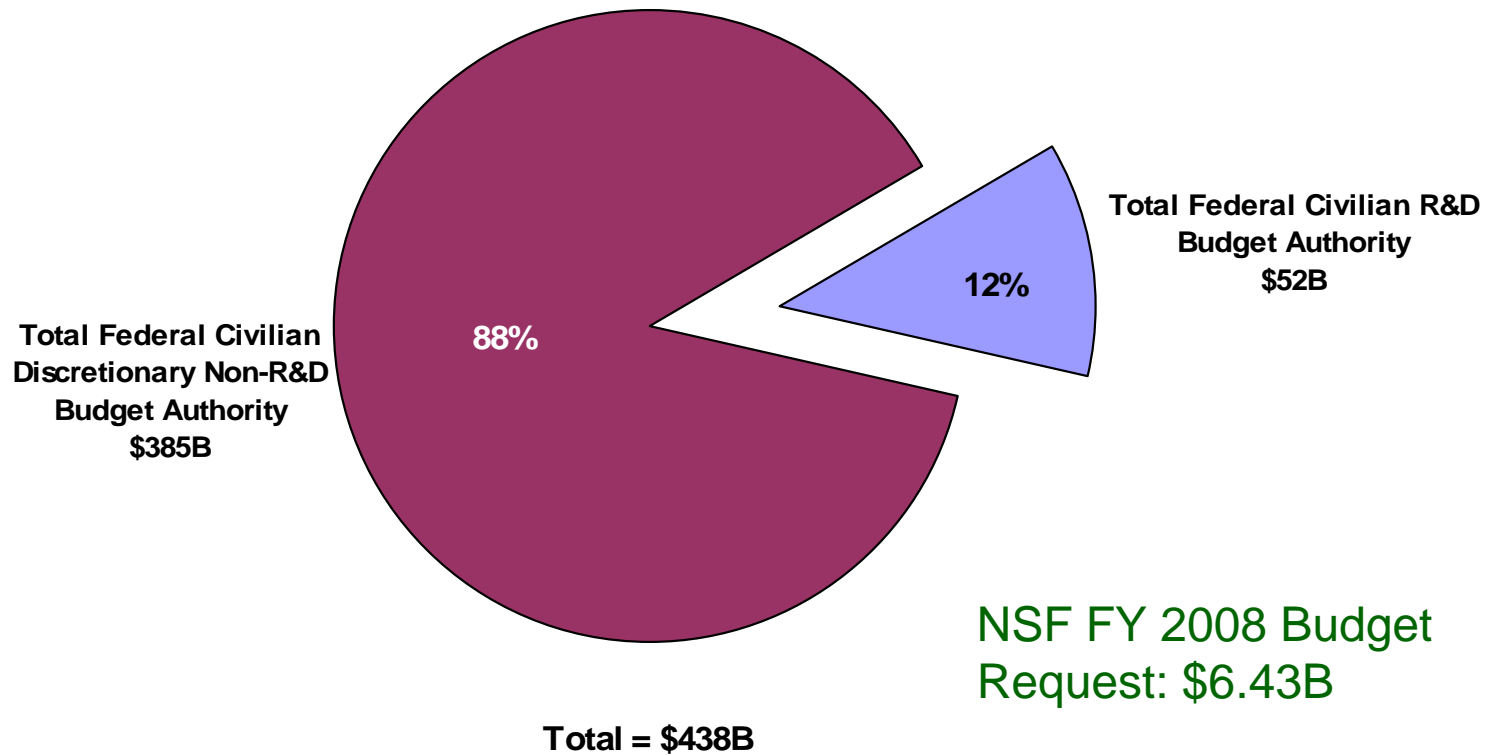


Percentage Composition of Federal Government Outlays





Federal Civilian R&D as a Percent of Total Civilian Discretionary Budget Authority -- FY 2008





Support for Minority Serving Institutions at NSF



A Minority Serving Institution (MSI) is defined in 20 U.S.C. § 1067k(3), as an institution of higher education whose enrollment of a single minority or a combination of minorities... exceeds 50 percent of the total enrollment. The Secretary of Education shall verify this information from the data on enrollments in the higher education information surveys (HEGIS) furnished by the institution to the Office for Civil Rights, Department of Education.

Identified minority groups are those underrepresented in science and engineering and include:

- Black or African-American
- Hispanic
- Native American and Alaska Native

Categories of Minority Serving Institutions

The U.S. Department of Education recognizes six discrete categories:

1. Alaska Native Serving Institutions
 2. Hispanic Serving Institutions (HSIs)
 3. Historically Black Colleges & Universities (HBCUs)
 4. Native Hawaiian Serving Institutions
 5. Tribal Colleges and Universities (TCUs)
- and
6. Minority Serving Institutions (MSIs) – it is possible to be an MSI and not be in one of the other categories

NSF Top Five MSI Funding Recipients*

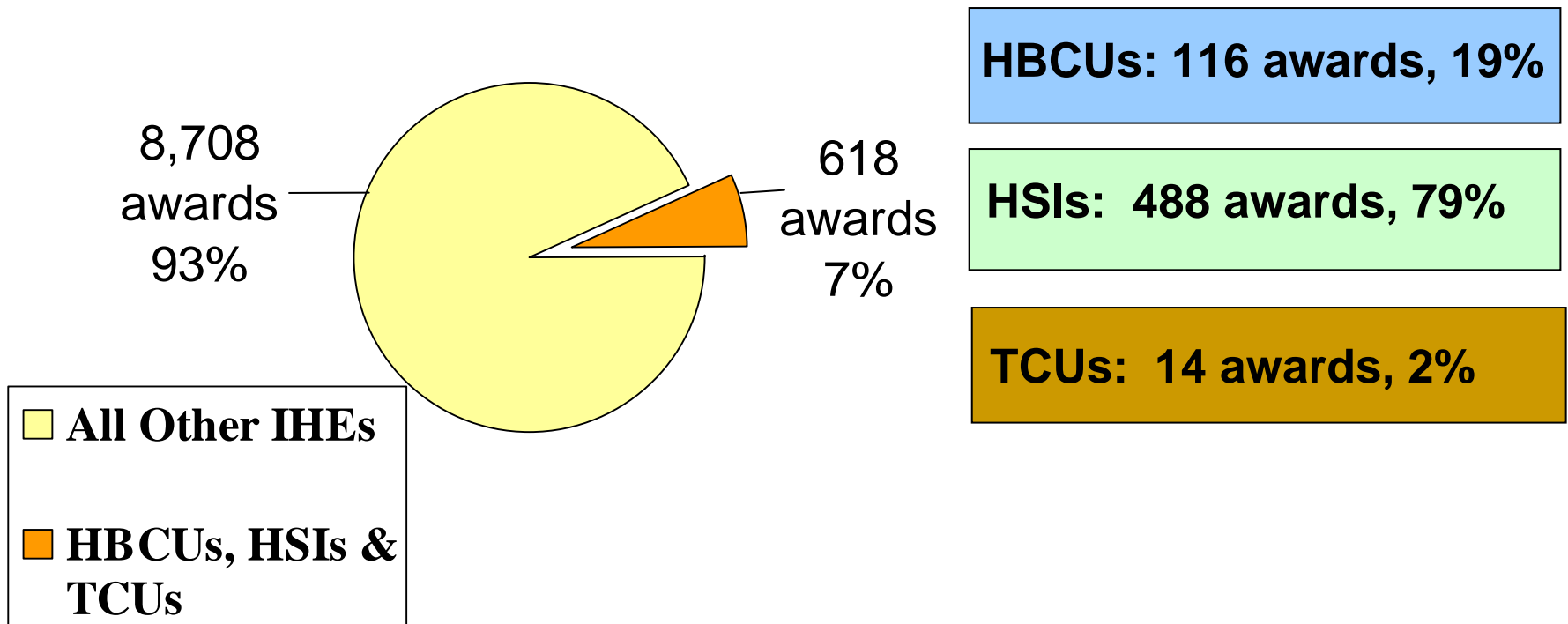
Dollars in Millions

FY 2005			FY 2006		
	<u>Rank</u>	<u>Funds</u>		<u>Rank</u>	<u>Funds</u>
UC Berkeley	5	\$80.6	U of So. Cal**	28	\$40.0
UCLA	9	65.2	Oregon State U**	39	31.7
UC Irvine	33	36.1	U of New Mexico**	74	17.3
U of Hawaii	44	28.7	New Mexico St U	93	11.2
UC Riverside	71	16.0	CUNY City Col**	100	9.7

* Dept of Education's 2006 revised guidelines resulted in the elimination of the MSI designation for all FY 2005 institutions.

** Hispanic Serving Institutions

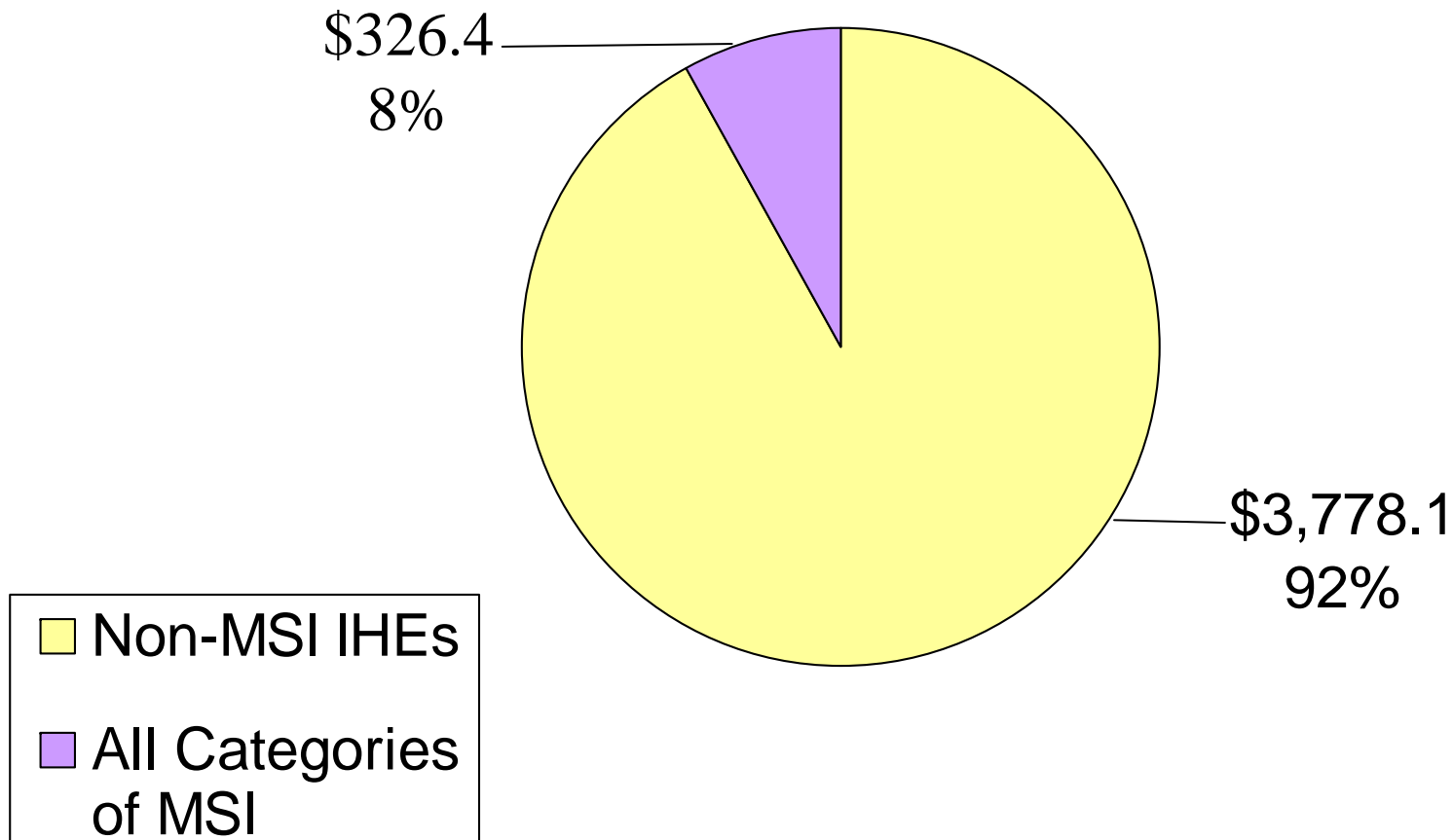
NSF FY 2006 Awards Issued to HBCUs, HSIs, & TCUs



Total number of awards = 9,326

NSF FY 2006 Direct Funding to Minority Serving Institutions

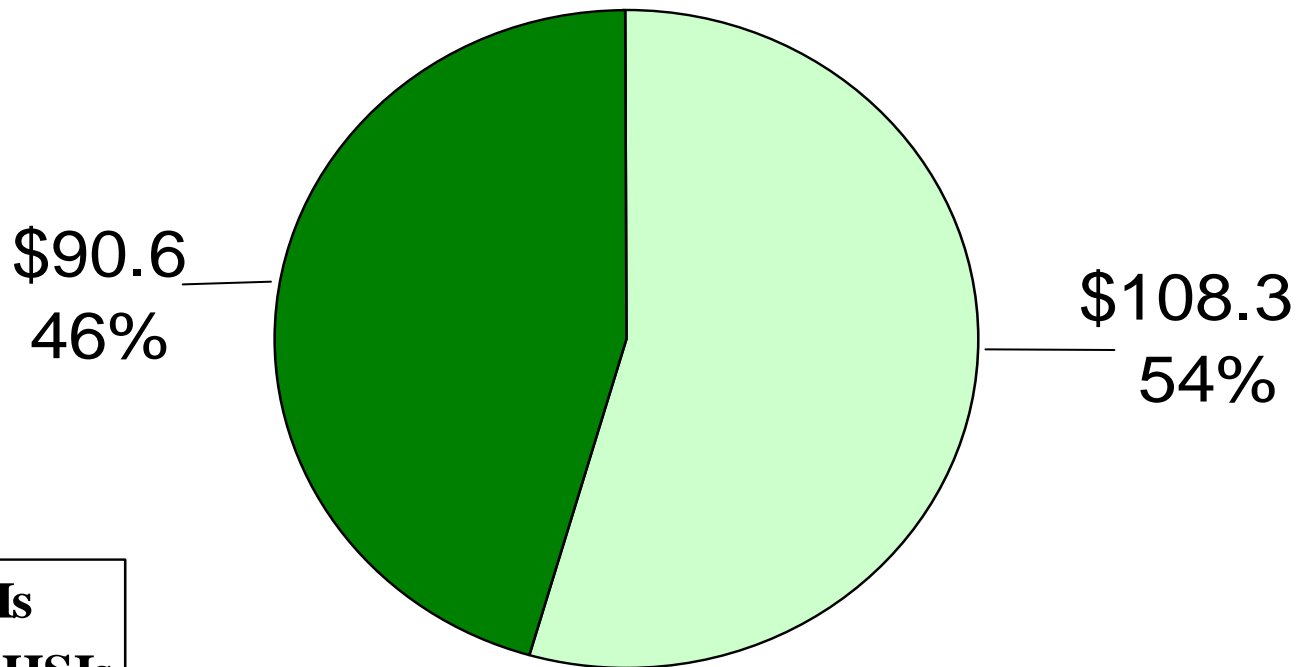
Dollars in Millions



Total = \$4,104.5

NSF FY 2006 Direct Funding to HSIs

Dollars in Millions

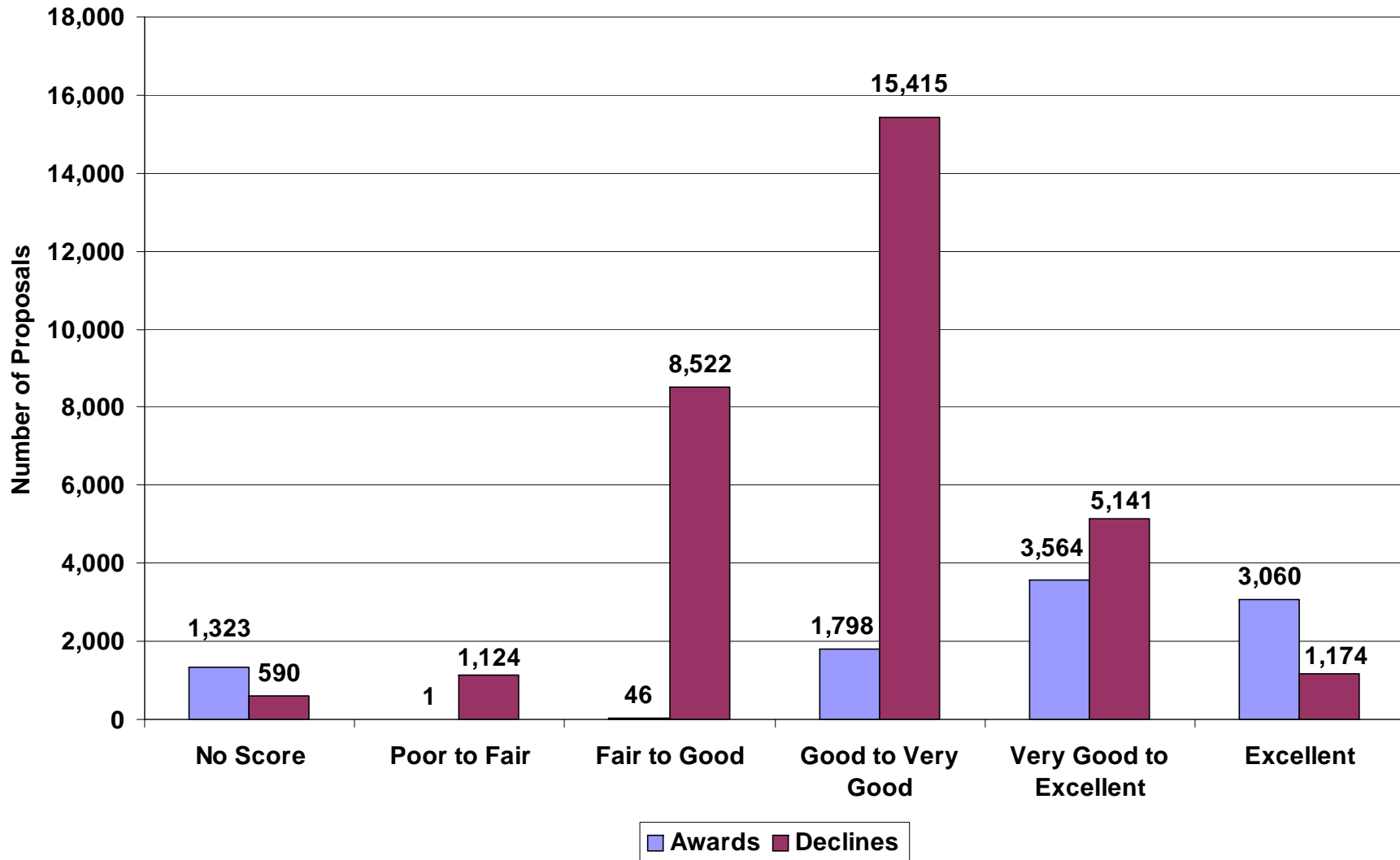


Total = \$198.9



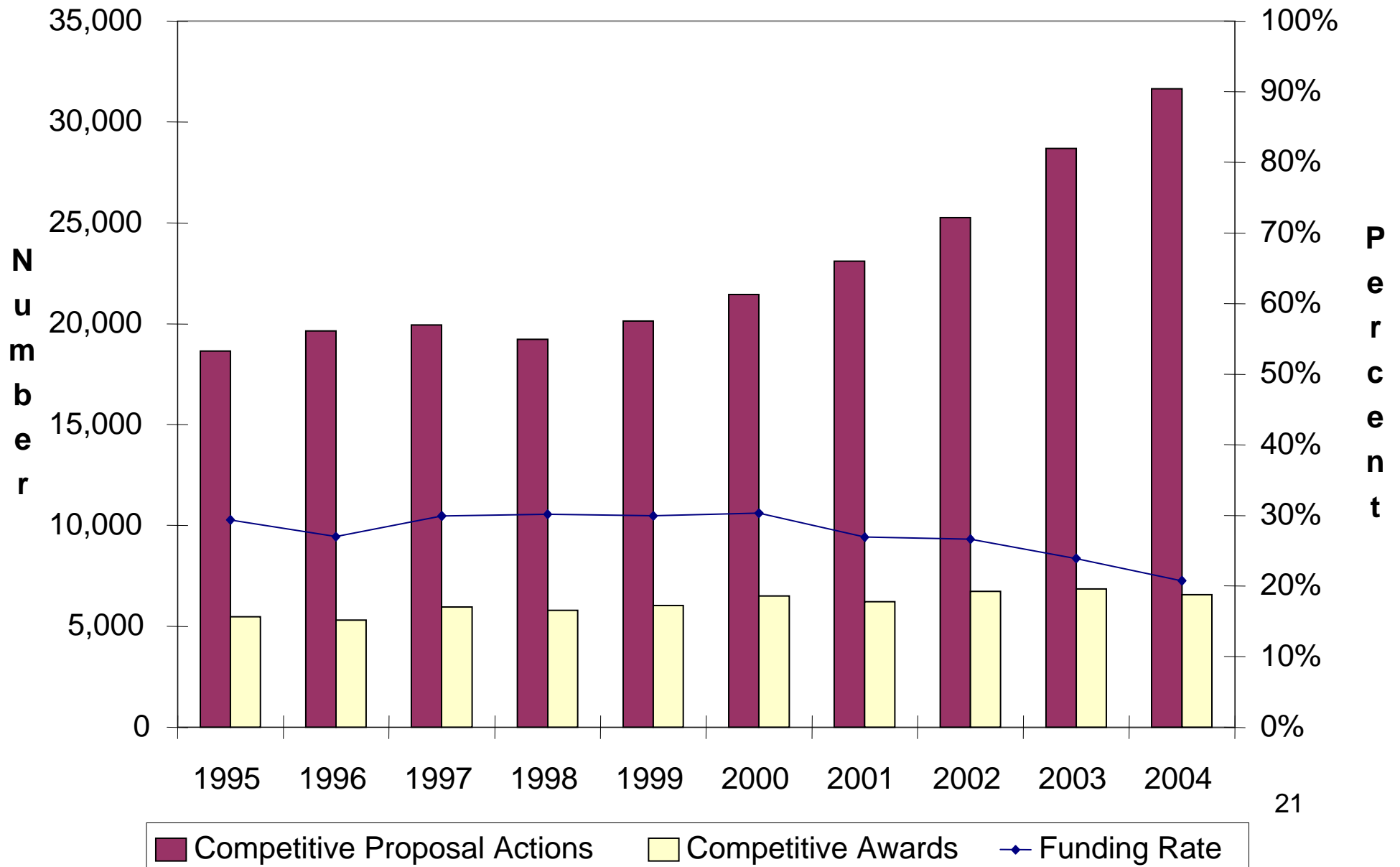
Proposal Funding Trends

Distribution of Average Reviewer Ratings FY 2005

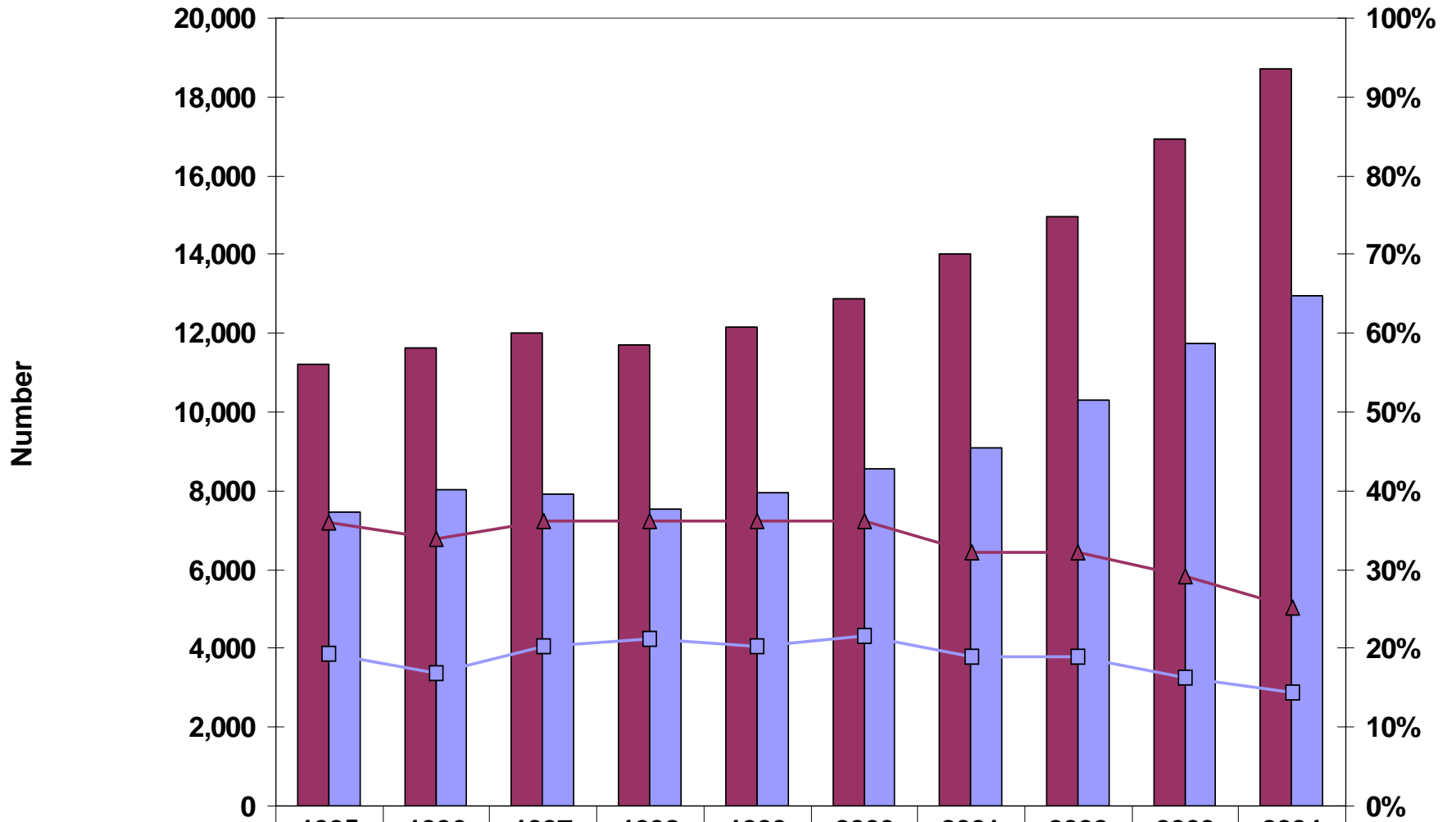


Number of Proposals: 31,966 Declines, 9,792 Awards

NSF Funding Rate for Competitive Awards - Competitive Research Grants

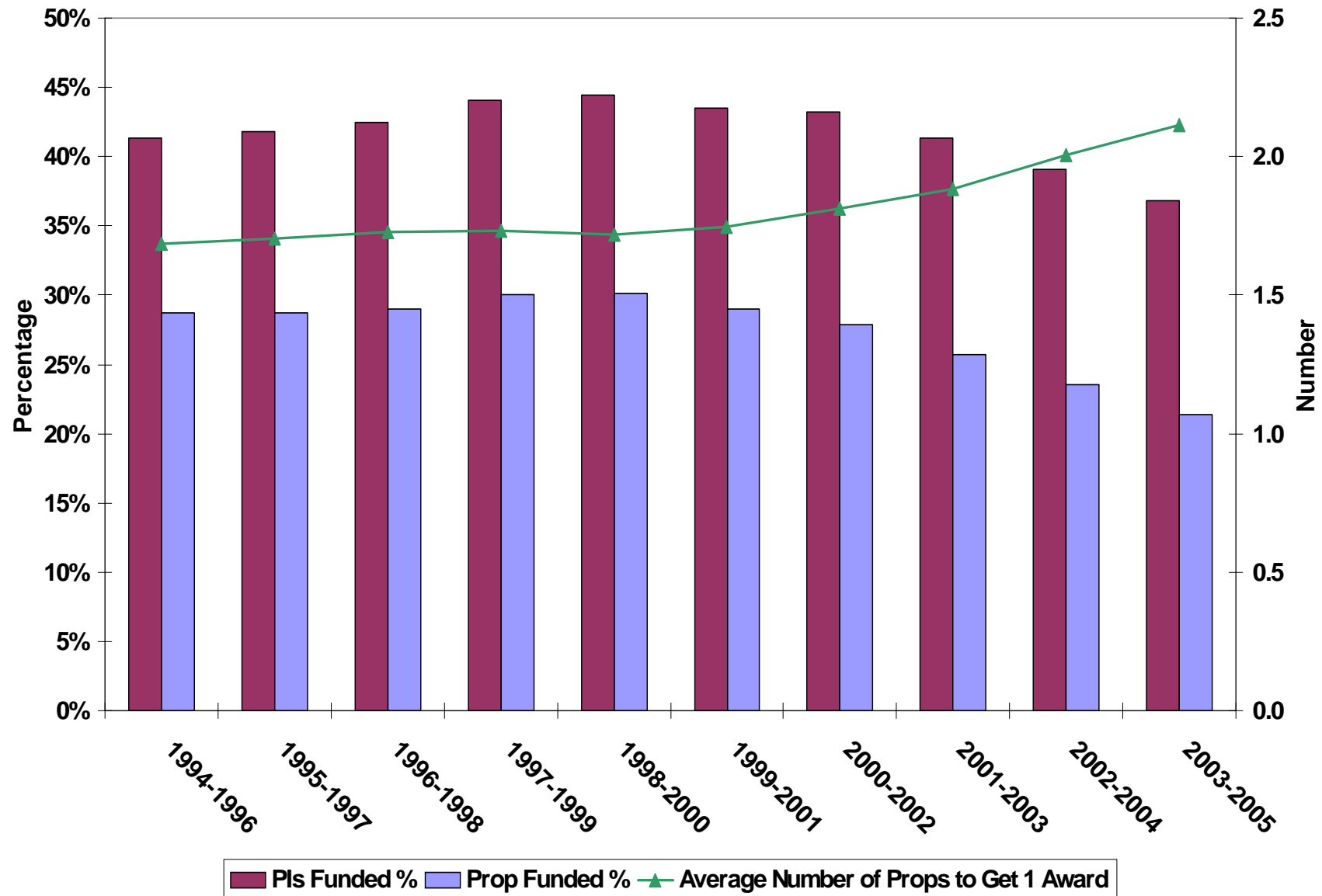


Research Grant Proposals by PI Type

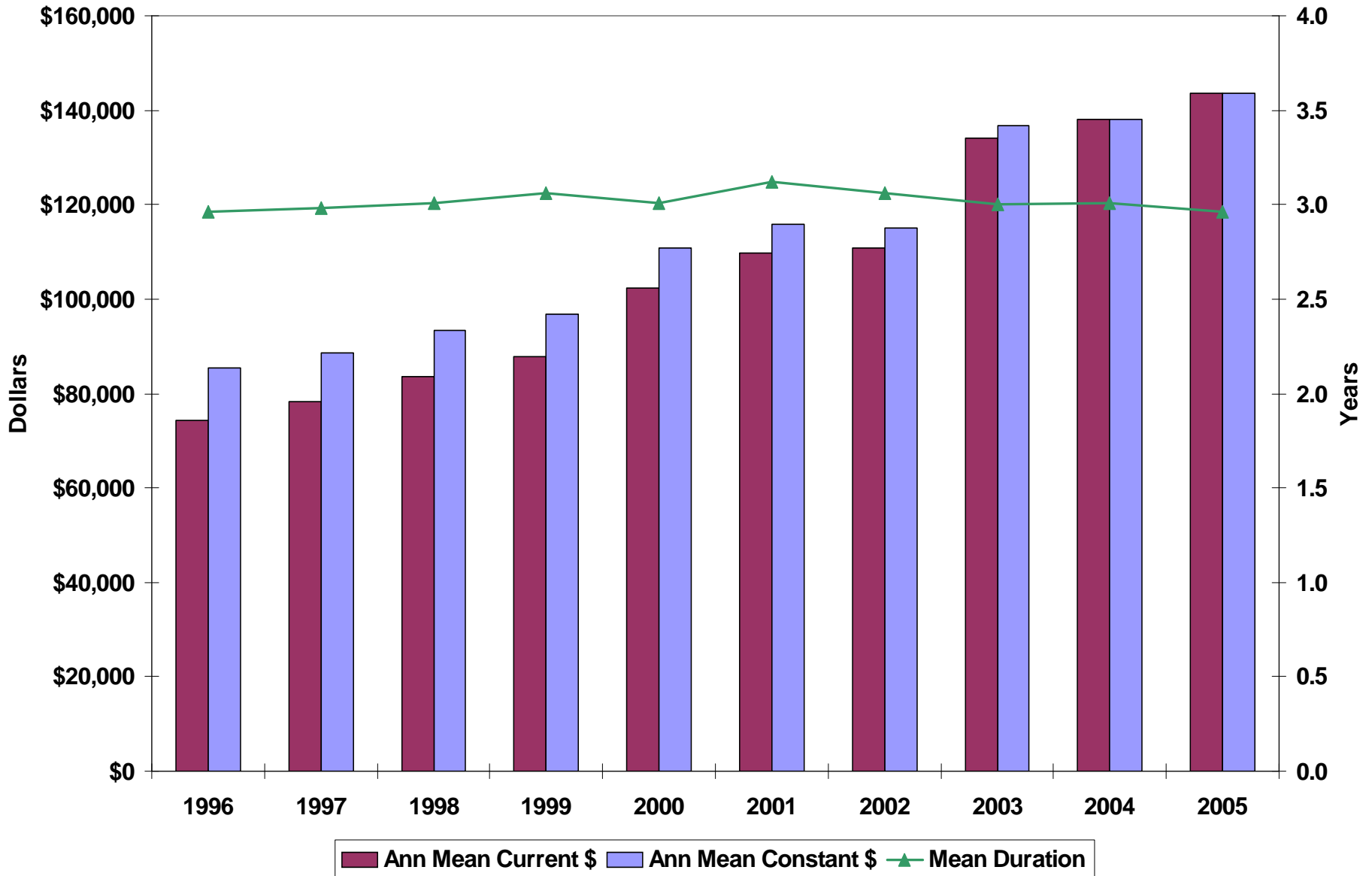


	1995	1996	1997	1998	1999	2000	2001	2002	2003	2004
Proposals - Prior PI	11,203	11,635	12,026	11,693	12,172	12,885	14,013	14,965	16,944	18,700
Proposals - New PI	7,446	8,013	7,910	7,526	7,951	8,561	9,084	10,286	11,752	12,941
Funding Rate - Prior PI	36%	34%	36%	36%	36%	36%	32%	32%	29%	25%
Funding Rate - New PI	19%	17%	20%	21%	20%	22%	19%	19%	16%	14%

PI vs Proposal Funding Rate - Research Grants Based on 3 Year Intervals



NSF Competitive Award Size and Duration - Research Grants



*Based on estimated 2003-2004 Deflators



Opportunities for Funding



FY 2008 Budget Request

2008
BUDGET
REQUEST

\$6.43 billion

Increase over FY 2007 Request:

\$409 million, 6.8%





Programmatic Opportunities

- Many, many programmatic opportunities
- Ask early, ask often
- Participate in merit review process
- Get to know your NSF Program Directors
- Consider serving as IPAs, VSEEEs



Key Documents

- FY 2007 NSF Budget Request
 - <http://www.nsf.gov/about/budget/fy2007>
- FY 2008 NSF Budget Request
 - <http://www.nsf.gov/about/budget/fy2008/index.jsp>
- Grant Proposal Guide (NSF 04-23)
 - http://www.nsf.gov/publications/pub_summ.jsp?ods_key=GPG
- Science and Engineering Indicators
 - <http://www.nsf.gov/statistics/seind06/>
- When in doubt:
 - <http://www.nsf.gov/>



NSF Websites

National Science Board	http://www.nsf.gov/nsb/
Director/Deputy Director	http://www.nsf.gov/od/
Inspector General	http://www.nsf.gov/oig/
Office of Cyberinfrastructure	http://www.nsf.gov/dir/index.jsp?org=OCI
Office of International Science and Engineering	http://www.nsf.gov/div/index.jsp?div=OISE
Office of Equal Opportunity Programs	http://www.nsf.gov/od/oeo/index.jsp
Office of Legislative and Public Affairs	http://www.nsf.gov/od/lpa/index.jsp
Office of the General Counsel	http://www.nsf.gov/od/ogc/index.jsp
Office of Polar Programs	http://www.nsf.gov/dir/index.jsp?org=opp
Office of Integrative Activities	http://www.nsf.gov/od/oia/index.jsp
Biological Sciences	http://www.nsf.gov/dir/index.jsp?dir=BIO
Social, Behavioral & Economic Sciences	http://www.nsf.gov/dir/index.jsp?dir=SBE
Computer & Information Science & Engineering	http://www.nsf.gov/dir/index.jsp?dir=CISE
Education & Human Resources	http://www.nsf.gov/dir/index.jsp?dir=EHR
Engineering	http://www.nsf.gov/dir/index.jsp?dir=ENG
Budget, Finance & Award Management	http://www.nsf.gov/bfa/
Geosciences	http://www.nsf.gov/dir/index.jsp?dir=GEO
Information Resource Management	http://www.nsf.gov/oirm/
Mathematical & Physical Sciences	http://www.nsf.gov/dir/index.jsp?dir=MPS