

Beef Breeding Research

75th Anniversary Sire Summary for Line 1 Hereford cattle



Bibliographic Information: M. D. MacNeil. 2009. Beef Breeding Research: 75th Anniversary Sire Summary for Line 1 Hereford cattle. USDA Agricultural Research Service, Miles City, Montana.

Research conducted by USDA Agricultural Research Service at Miles City, Montana, is in collaboration with the Montana Agricultural Experiment Station, Montana State University, Bozeman.

Information in this publication is public property and may be reprinted without permission. Digital files containing the illustrations may be obtained from USDA-ARS, 243 Fort Keogh Rd., Miles City, MT 59301. Phone (406) 874-8200 or FAX (406) 874-8289

Reference to any commercial product or service is made with the understanding that no discrimination is intended and no endorsement by USDA is implied.

The U.S. Department of Agriculture (USDA) prohibits discrimination in all its programs and activities on the basis of race, color, national origin, age, disability, and where applicable, sex, marital status, familial status, parental status, religion, sexual orientation, genetic information, political beliefs, reprisal, or because all or part of an individual's income is derived from any public assistance program. USDA is an equal opportunity employer.

PREFACE: The vision that created Line 1 Hereford cattle was long-term and fraught with risk--the hallmarks of research conducted by the USDA's Agricultural Research Service (ARS). The journey toward fulfilling this vision laid many building blocks in the scientific foundation for modern-day national and international genetic improvement programs.

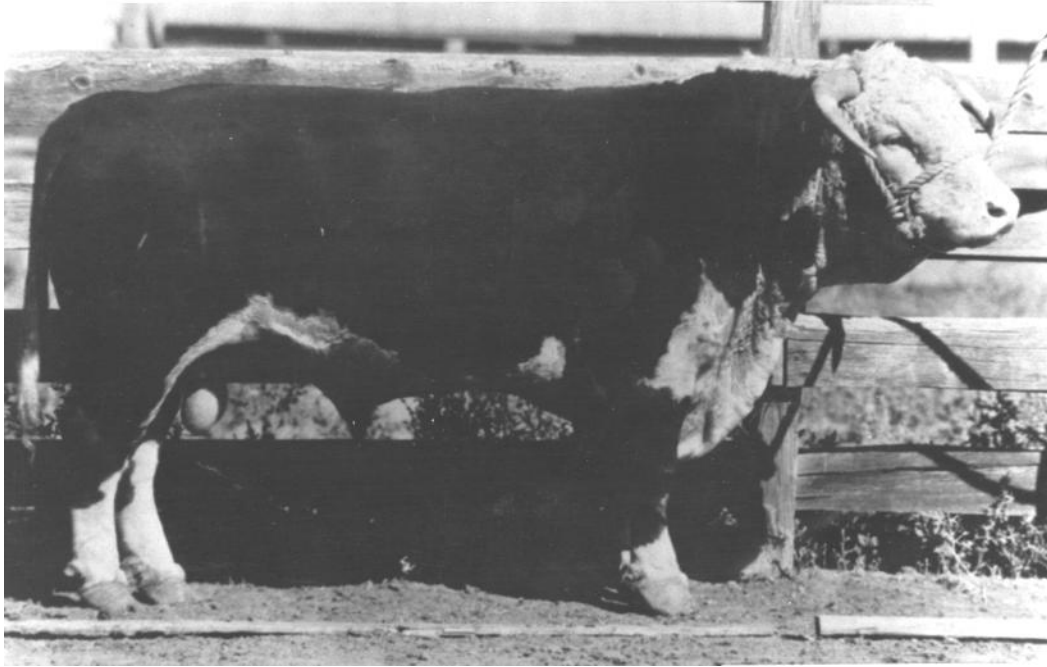
The procedures for performance recording programs, first developed at Miles City, Montana, using Line 1 cattle, have been adopted worldwide to the extent that they are today considered "common knowledge" and used without reference. The collaborative study of genotype-environment interaction conducted at Miles City, Montana and at Brooksville, Florida with Line 1 Hereford cattle was the first of its kind and even today the resulting publications are considered landmark references.

The 75-year commitment to examining the effects of selection in Line 1 Hereford cattle could only have been made by ARS. It was this commitment that insured the availability of Line 1 Hereford cattle as a unique 21st Century resource for sequencing the bovine genome. Yet, the story is not complete. Future studies can lead to an even greater understanding of how genotype and environment, both separately and jointly, determine performance.

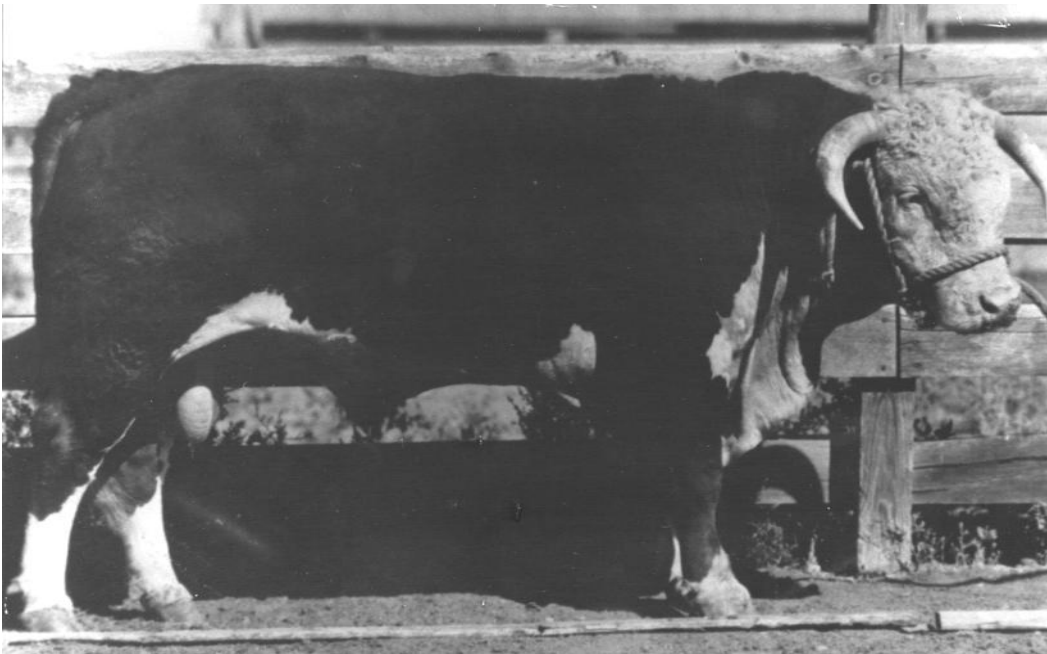
Beef producers, regardless of their breed preference, have benefitted from the research conducted with Line 1 Hereford cattle. National cattle evaluation summarizes performance records and provides genetic predictions that enable producers to increase efficiency and profitability. Direct use of Line 1 Hereford germplasm also has benefitted Hereford breeders and beef producers worldwide.

This sire summary reflects the long-term commitment to consistent data collection inherent in the Line 1 Hereford breeding program and state-of-the art statistical procedures for genetic evaluation.

75th Anniversary Sire Summary for Line 1 Hereford cattle



Advance Domino 20: One of two paternal half-sib foundation sires for Line 1 Hereford cattle. His progeny were noted for their maternal qualities.



Advance Domino 54: One of two paternal half-sib foundation sires for Line 1 Hereford cattle. His progeny were noted for their growth potential.

Inbreeding (F_x , %), generation number, birth years (Year) and number of progeny (N), and genetic evaluation of sires used in the Line 1 Hereford herd producing calves from 1934 to 2008. Breeding values were predicted using single- (daughter calving date (CD) and stayability (ST)) or multiple-(birth weight (BW), preweaning gain (G1), maternal preweaning gain (MM) and postweaning gain (G2), kg) trait animal models. Greater values of the growth trait breeding values indicate progeny that are genetically heavier or faster gaining. Greater breeding values for maternal preweaning gain indicate genetic potential to sire daughters with greater milk production. Greater breeding values indicate greater genetic potential for daughters to calve later. Greater breeding values for stayability indicate greater genetic potential for daughters to remain in production through 5 years of age.

Sire	F_x	Generation number	Year	N	Growth traits			Maternal qualities		
					BW	G1	G2	MM	CD	ST
Advance Domino 20	9	1.00	35-42	161	-2.0	-6	-7	17	0.7	0.13
Advance Domino 54	7	1.00	35-42	155	3.5	6	3	-11	-3.2	-0.01
Prairie Domino	2	2.00	40-44	125	0.3	-1	1	4	0.0	0.05
Chief Domino 1	2	2.00	41	23	1.3	1	2	-14	-2.1	-0.05
Alton Domino	5	2.25	43-46	100	0.9	5	1	1	-1.3	0.01
Clayton Domino	10	2.50	43-47	95	-0.1	1	-1	0	0.9	0.01
L1B Domino 1	11	2.50	46	13	1.3	-1	-7	1	-1.6	0.00
L1B Domino 2	12	2.50	44-47	67	1.9	2	7	-12	-1.5	-0.01
AA Domino 2	17	3.12	45-46	41	1.9	2	7	8	1.2	0.16
Adams Domino	20	3.12	47-50	87	4.5	8	8	12	-3.3	0.03
Carroll Domino	14	3.75	48	22	1.3	9	10	13	0.7	0.04
Albion Domino	17	3.12	48	31	0.4	1	8	3	-0.7	0.00
Carson Domino	15	3.25	48-51	86	2.6	3	5	4	-3.7	0.14
Chase Domino	15	3.25	47-48	48	2.4	9	14	-6	-0.1	0.07
Chico Domino	14	3.25	47	24	3.8	8	15	-1	-1.9	0.04
L1 Domino 10	16	4.12	49-54	148	1.3	11	10	1	-0.4	-0.00
L1 Domino 29	27	4.19	51-52	38	3.9	6	-2	8	-3.3	0.02
L1 Domino 35	13	3.62	52	28	1.2	2	3	-4	-2.8	0.04
L1 Domino 67	15	4.12	53-56	90	6.3	9	14	19	-1.0	0.15
L1 Domino 72	11	4.19	52	8	3.3	8	13	2	-2.6	0.02
L1 Domino 73	12	4.28	53-54	43	5.9	11	5	10	-4.4	0.08
L1 Domino 94	16	4.25	53-54	53	3.3	10	9	5	-4.1	-0.01
L1 Domino 122	21	4.72	56	23	6.3	9	13	16	-3.1	0.10
L1 Domino 112	17	4.69	55-56	53	2.1	11	16	12	-2.4	0.04
L1 Domino 115	14	4.69	53-54	48	5.5	12	14	10	-0.3	-0.03
L1 Domino 168	27	5.25	59-60	43	3.4	11	14	7	-6.8	0.03
L1 Domino 171	21	5.19	55-58	62	3.6	12	12	17	-1.6	0.02
L1 Domino 181	25	5.17	55-61	123	3.4	7	10	8	-3.9	0.10
L1 Domino 220	27	5.20	56-61	79	6.2	19	6	19	-4.5	0.06
L1 Domino 253	27	5.79	57-59	61	4.3	6	9	21	-3.2	-0.03
L1 Domino 284	18	5.71	58-60	67	3.5	5	11	5	-2.9	0.06

Sire	F _x	Generation number	Year	N	Growth traits			Maternal qualities		
					BW	G1	G2	MM	CD	ST
L1 Domino 286	18	6.15	58-61	92	6.2	15	18	7	0.0	0.16
L1 Domino 308	15	6.27	60	25	3.9	11	13	11	-1.5	-0.04
L1 Domino 311	16	6.33	59	22	5.9	13	15	12	-1.1	0.01
L1 Domino 359	30	6.48	60	11	6.0	9	14	13	-4.4	0.02
L1 Domino 428	32	6.68	62	20	3.8	7	11	4	-2.6	0.04
L1 Domino 444	23	6.49	61-63	46	4.8	11	12	12	0.2	0.02
L1 Domino 464	27	6.57	61	18	5.6	15	17	16	-3.1	0.11
L1 Domino 410	20	6.42	61-62	19	2.0	4	12	7	-0.9	0.13
L1 Domino 433	23	6.32	61-63	49	4.5	4	7	12	-2.8	0.06
L1 Domino 499	22	6.42	62-63	21	1.7	3	8	11	-0.7	0.13
L1 Domino 489	26	6.67	62	15	4.7	13	21	12	-8.6	0.05
L1 Domino 483	20	6.61	63-64	46	6.7	21	16	10	3.3	0.09
L1 Domino 474	33	7.36	64	4	4.8	10	15	14	-4.1	0.01
L1 Domino 490	17	6.09	65-66,68	36	5.4	9	6	15	-2.0	0.08
L1 Domino 525	22	7.03	63	2	5.6	15	23	13	-3.1	0.13
L1 Domino 556	20	7.00	64	16	4.0	13	16	20	-3.7	0.11
L1 Domino 571	26	7.00	63	13	3.0	5	13	13	-3.2	0.07
L1 Domino 573	20	6.63	64	31	8.9	23	28	11	-3.7	0.06
L1 Domino 559	19	7.06	63	19	5.9	14	16	19	-3.1	0.03
L1 Domino 549	23	7.36	63	5	6.6	17	23	8	0.0	0.01
L1 Domino 584	25	7.16	64-66	30	0.7	2	18	16	-4.2	0.12
L1 Domino 616	23	7.51	64	8	4.6	11	20	18	-6.7	0.07
L1 Domino 597	20	7.25	65-66	23	4.6	7	11	15	-0.9	0.08
L1 Domino 614	30	6.77	64	3	4.7	11	13	21	-0.2	0.15
L1 Domino 644	19	7.21	67	12	7.0	19	24	10	1.0	0.07
L1 Domino 626	21	7.41	65	3	6.5	15	20	15	0.5	0.04
L1 Domino 655	21	7.27	66	4	5.6	14	17	8	-2.1	0.06
L1 Domino 656	22	6.95	66-67	22	5.5	15	17	14	-0.6	0.03
L1 Domino 694	23	7.43	67-68	17	7.9	21	24	17	-4.3	0.02
L1 Domino 696	21	7.59	67	20	7.3	24	24	11	-3.3	0.11
L1 Domino 709	24	7.99	67-68	19	4.0	8	9	18	-4.1	0.08
L1 Domino 735	21	7.51	68-69	25	6.0	24	26	10	-2.5	0.06
L1 Domino 716	26	8.25	68-69	22	6.9	9	9	16	-0.2	0.09
L1 Domino 772	23	7.28	68	11	2.5	10	16	23	-4.7	0.08
L1 Domino 745	21	7.50	69-70	27	4.8	15	19	9	-2.1	0.06
L1 Domino 777	21	7.65	69	6	0.8	7	13	10	-4.8	0.10
L1 Domino 755	23	8.41	69-70	28	6.4	9	14	7	-1.3	0.06
L1 Domino 67164	22	7.79	69	16	7.2	26	30	8	-2.5	0.09
L1 Domino 67253	22	8.35	70	13	5.9	19	16	14	-2.0	0.10
L1 Domino 67598	27	8.06	70-71	29	6.0	11	21	15	-1.0	0.06

Sire	F _x	Generation number	Year	N	Growth traits			Maternal qualities		
					BW	G1	G2	MM	CD	ST
L1 Domino 67676	20	8.32	70-71	28	4.6	21	26	24	-5.9	0.05
L1 Domino 68183	23	8.23	70	17	3.1	12	22	21	-3.9	0.09
L1 Domino 68215	28	8.09	71-72	21	9.3	22	28	18	-2.7	0.02
L1 Domino 68314	22	8.20	71	14	2.2	9	10	25	-2.7	0.10
L1 Domino 68632	23	8.62	71-72	31	5.2	19	17	12	-1.7	0.02
L1 Domino 69086	22	8.73	72	18	4.3	20	31	8	-4.6	0.07
L1 Domino 69126	22	8.57	71	14	6.8	21	21	12	-3.4	0.13
L1 Domino 69137	22	9.03	72-73	32	9.8	20	17	22	-2.4	0.08
L1 Domino 69470	21	8.93	72	18	5.5	21	37	16	-3.9	0.07
L1 Domino 69632	26	8.92	72-73	25	4.8	15	15	8	-2.5	0.08
L1 Domino 69998	25	9.11	75	27	5.3	16	16	8	-3.0	0.06
L1 Domino 70057	21	8.82	73	14	3.1	14	19	18	-6.2	0.10
L1 Domino 70066	24	8.40	73	17	8.1	16	18	14	-5.1	0.06
L1 Domino 70262	22	8.84	73	19	4.3	8	20	17	-5.4	0.10
L1 Domino 70546	22	8.56	73	15	4.6	16	16	13	-1.9	0.11
L1 Domino 70643	25	9.27	74	21	1.8	8	18	20	-7.2	0.08
L1 CL3 Domino 71166	27	9.54	74-75	35	5.5	21	22	14	-3.8	0.11
L1 Domino 71175	23	9.21	74	14	5.1	16	14	14	-2.2	0.4
L1 Domino 71451	23	8.89	74-76	52	4.0	23	29	21	-8.0	0.09
L1 CL3 Domino 71488	26	9.45	75	17	7.5	15	14	12	-1.9	0.07
L1 CL3 Domino 71556	29	8.80	74	15	2.8	12	15	22	-5.8	0.09
L1 Domino 71662	26	9.13	74	17	9.6	21	24	13	-1.6	0.06
L1 Domino 72006	24	9.26	75-77	47	5.4	21	26	13	-1.6	0.03
L1 Domino 72335	26	9.44	75	15	5.0	16	20	13	-5.6	0.08
L1 Domino 73088	25	10.11	76-78	27	6.2	21	26	20	-4.3	0.04
L1 CL3 Domino 73147	23	9.43	76-77	31	5.7	17	19	10	-3.8	0.06
L1 Domino 73182	28	9.64	76	9	6.3	15	22	15	-4.8	0.06
L1 Domino 73186	24	9.75	76	11	11.5	26	17	21	-2.8	0.12
L1 CL3 Domino 74084	23	9.23	78	4	6.6	18	23	15	-4.8	0.09
L1 CL3 Domino 74503	27	9.72	77-78	11	7.0	23	26	16	-5.8	0.10
L1 CL3 Domino 74557	27	10.21	77	7	8.5	23	20	17	-4.5	0.12
L1 Domino 74772	27	9.70	77	7	5.5	22	17	19	0.4	0.06
L1 Domino 74776	24	9.88	77-78	20	2.0	13	14	25	-4.2	0.08
L1 Domino 74789	23	10.07	77	6	11.5	26	30	13	0.6	0.09
L1 CL3 Domino 75302	27	10.17	77	9	10.2	23	22	12	-1.4	0.08
L1 Domino 75809	25	10.08	78-79	24	5.0	25	36	19	-5.4	0.07
L1 Domino 75814	27	10.50	78	9	6.9	23	24	16	-5.2	0.09
L1 Domino 75827	25	10.11	77-78	27	6.4	19	23	26	-4.3	0.07
L1 Domino 76726	24	10.61	78-79	23	8.2	22	30	7	-1.9	0.05
L1 Domino 76744	21	9.52	78-79	19	6.9	20	27	13	-4.9	0.04
L1 Domino 76761	24	10.65	78-79	25	4.9	19	28	14	-2.4	0.05



L1 Domino 77618: Popular herd sire at Fort Keogh selling in 1980 to Cooper Hereford Ranch, Willow Creek, Montana and Lone Star Hereford Ranch, Henrietta, Texas for \$160,000.

Sire	F _x	Generation number	Year	N	Growth traits			Maternal qualities		
					BW	G1	G2	MM	CD	ST
L1 Domino 77260	24	10.93	79	3	5.1	18	20	17	-3.3	0.07
L1 Domino 77291	25	10.08	79-80	18	6.4	22	28	11	-3.3	0.05
L1 Domino 77426	23	10.97	79-80	25	5.1	16	24	19	-4.8	0.11
L1 Domino 77554	23	10.91	79-80	20	3.0	17	20	17	-4.4	0.07
L1 Domino 77618	22	10.48	79-80	25	8.4	24	23	16	-3.5	0.07
L1 Domino 78033	25	10.98	81-82	30	7.8	27	37	20	-3.8	0.07
L1 Domino 78045	27	9.53	80-81	26	6.4	21	23	8	-5.7	0.14
L1 Domino 78318	26	10.76	80-81	23	7.7	27	38	23	-2.9	0.08
L1 Domino 78325	25	11.16	80-81	26	7.2	22	32	14	-3.0	0.05
L1 Domino 78639	22	10.18	80-81	26	10.3	18	23	15	-2.1	0.08
L1 Domino 79435	25	11.65	81	10	4.5	19	24	23	-4.7	0.10
L1 Domino 79476	25	10.99	81-82	21	10.8	30	29	10	-2.5	0.05
L1 Domino 79484	27	10.66	81-82	23	8.0	21	22	10	-3.1	0.05
L1 Domino 80142	23	11.29	82-83	29	5.7	18	26	8	-8.6	0.10
L1 Domino 80626	25	12.05	82-83	28	7.3	18	32	26	-4.1	0.13
L1 Domino 80713	28	11.84	82-83	33	9.7	28	40	26	-0.8	0.10
L1 Domino 80813	26	12.23	82-83	32	8.4	27	34	14	-2.0	0.05
L1 Domino 80859	22	11.39	82	12	5.8	18	27	15	-3.3	0.07
L1 Domino 80878	24	11.48	83-84	32	8.8	26	34	23	-6.0	0.13
L1 Domino 810052	23	10.76	84-85	32	5.1	23	18	21	-7.3	0.12

Sire	F _x	Generation number	Year	N	Growth traits			Maternal qualities		
					BW	G1	G2	MM	CD	ST
L1 Domino 810066	26	11.98	83-84	37	9.5	27	27	8	-2.2	0.03
L1 Domino 810075	26	11.38	83	2	6.1	19	21	16	-5.0	0.12
L1 Domino 810287	25	11.30	84-85	23	8.5	16	18	24	-2.7	0.08
L1 Domino 810573	27	11.65	83-84	30	6.1	25	35	20	-3.3	0.07
L1 Domino 820112	24	11.60	85-86	14	3.8	18	29	29	-5.2	0.04
L1 Domino 820225	26	12.00	84-85	22	7.3	22	20	17	-2.5	0.05
L1 Domino 820603	24	12.28	84-85	29	7.2	25	38	13	-2.6	0.03
L1 Domino 820608	27	12.07	84-85	19	6.2	21	24	20	-2.3	0.12
L1 Domino 820673	29	12.46	85-86	25	7.5	23	32	34	-2.7	0.12
L1 Domino 820683	24	11.90	85-86	29	9.5	25	29	12	-2.3	0.04
L1 Domino 830184	27	12.44	86-87	18	6.5	18	22	17	-3.0	0.09
L1 Domino 830517	31	12.50	86-87	19	6.2	20	31	16	-4.0	0.11
L1 Domino 830577	27	12.62	86-87	25	3.6	22	25	11	-4.8	0.08
L1 Domino 830582	29	12.39	86-87	26	6.9	23	19	14	-2.7	0.04
L1 Domino 830709	27	12.67	85-86	14	4.3	18	21	18	-3.6	0.07
L1 Domino 840110	30	12.66	87-88	25	8.6	24	22	10	-3.3	0.10
L1 Domino 840509	31	12.59	87-88	22	7.2	22	21	24	-0.6	0.04
L1 Domino 840662	27	12.47	87-88	21	6.5	27	41	10	-3.9	0.09
L1 Domino 850044	26	12.50	87-88	25	7.2	26	38	12	-3.6	0.04
L1 Domino 850136	30	12.54	87-88	29	8.9	21	22	2	-1.6	0.06
L1 Domino 850227	25	13.18	87-88	24	5.6	22	34	16	-3.9	0.07
L1 Domino 860041	26	13.26	89	12	2.1	19	20	10	-8.9	0.10
L1 Domino 860046	28	13.59	88-89	27	5.3	21	27	20	-0.7	0.03
L1 Domino 860308	27	12.74	88	6	5.0	19	23	23	-5.8	0.14
L1 Domino 860321	28	12.60	88-89	26	6.3	15	19	21	-3.7	0.12
L1 Domino 860336	32	13.41	88-89	27	8.9	19	28	16	-2.2	0.09
L1 Domino 860445	26	12.62	89	12	8.8	22	23	13	-5.8	0.06
L1 Domino 870130	25	13.35	89-90	25	5.9	30	34	2	-4.6	0.06
L1 Domino 870135	27	13.63	89-90	20	10.1	26	29	12	-1.1	0.07
L1 Domino 870253	34	13.26	90	14	6.9	24	26	8	-1.6	0.06
L1 Domino 870274	27	13.48	89	12	7.6	28	41	21	-2.4	0.04
L1 Domino 870351	27	12.62	89	13	10.9	29	26	13	-3.5	0.07
L1 Domino 870485	28	13.81	90	12	6.9	25	30	15	-3.1	0.06
L1 Domino 870486	28	13.42	90	10	7.8	24	29	18	-4.3	0.07
L1 Domino 880118	28	13.35	90	16	5.9	22	18	22	-3.6	0.11
L1 Domino 880122	35	13.44	90-91	26	6.8	28	52	18	-2.8	0.08
L1 Domino 880171	28	13.72	90	15	6.3	23	30	18	-2.8	0.09
L1 Domino 880243	32	14.25	91	20	10.9	27	34	27	0.8	0.07
L1 Domino 880253	32	13.73	91	20	9.5	26	24	12	-2.5	0.11
L1 Domino 880412	25	13.22	90-91	18	4.8	22	27	21	-5.2	0.08
L1 Domino 880470	26	13.07	90-91	20	1.9	14	23	18	-6.6	0.11

Sire	F _x	Generation number	Year	N	Growth traits			Maternal qualities		
					BW	G1	G2	MM	CD	ST
L1 Domino 890020	27	14.33	91	14	6.7	28	35	28	-3.8	0.08
L1 Domino 890029	30	14.12	91-92,98	29	8.9	28	43	34	-4.0	0.12
L1 Domino 890173	27	13.55	91-92	25	5.6	24	20	16	-4.7	0.08
L1 Domino 890262	29	14.08	91-92	18	0.9	12	9	17	-7.5	0.12
L1 Domino 890302	26	13.71	91-92	34	11.2	26	34	24	-4.3	0.05
L1 Domino 890325	29	14.13	91-92	28	10.5	25	27	23	-4.4	0.06
L1 Domino 900098	27	14.30	92-93	16	5.9	28	37	7	-4.9	0.04
L1 Domino 900200	26	13.47	92-93	17	6.6	34	31	16	-5.4	0.08
L1 Domino 900234	28	14.12	92-93	26	10.2	29	39	14	-0.4	0.03
L1 Domino 900289	32	14.35	92-93	25	7.5	25	26	18	-2.8	0.10
L1 Domino 900304	27	14.05	92-93	22	10.7	28	39	22	-4.3	0.13
L1 Domino 900308	27	14.49	92-93	27	7.8	28	46	29	-2.5	0.10
L1 Domino 900383	28	14.47	93	14	9.5	24	26	20	-3.2	0.16
L1 Domino 900401	30	14.49	93	14	8.8	32	27	29	-4.9	0.07
L1 Domino 910026	29	14.53	93-94	23	9.9	24	33	22	-3.7	0.06
L1 Domino 910057	28	14.23	94	13	9.7	26	28	17	-3.1	0.06
L1 Domino 910079	28	14.18	93-94	31	9.4	25	34	35	-4.2	0.10
L1 Domino 910205	27	14.13	93	10	5.3	21	27	19	-5.0	0.09
L1 Domino 910218	28	14.69	93-94	32	10.2	33	26	33	-5.1	0.01
L1 Domino 910402	27	13.50	93-94	29	3.6	16	26	22	-5.2	0.11
L1 Domino 920416	31	15.12	94	7	7.6	27	34	18	-2.9	0.10
L1 Domino 920421	30	14.65	94-95	24	7.8	20	26	30	-3.7	0.09
L1 Domino 920448	26	14.13	94-95	28	8.8	39	35	24	-5.1	0.13
L1 Domino 920449	27	14.19	94-95	22	7.0	22	24	24	-3.5	0.09
L1 Domino 920454	29	14.46	94-95	28	8.4	22	32	30	0.6	0.07
L1 Domino 920498	28	14.55	94	11	7.3	34	41	14	-5.8	0.13
L1 Domino 920501	28	14.68	94-95	24	10.9	32	47	31	-5.0	0.12
L1 Domino 920540	25	11.46	95	14	10.8	30	22	26	-1.9	0.10
L1 Domino 93452	28	15.04	95-96	14	5.2	23	35	24	-5.5	0.14
L1 Domino 93469	30	15.44	95	13	11.0	32	36	33	-3.7	0.08
L1 Domino 93502	30	14.40	95	13	6.5	24	26	19	-0.8	0.08
L1 Domino 93507	30	15.59	95	14	7.7	29	33	32	-6.1	0.06
L1 Domino 93515	28	15.38	95	11	10.8	32	37	27	-3.1	0.06
L1 Domino 93546	29	14.76	96	18	13.2	31	36	29	-1.2	0.12
L1 Domino 93552	30	14.90	96	16	8.0	27	30	19	-6.6	0.18
L1 Domino 93567	30	15.44	95	10	9.8	25	26	30	-4.6	0.13
L1 Domino 93572	34	14.89	95	16	8.6	26	25	31	-4.9	0.08
L1 Domino 94325	31	15.25	96-97	20	7.6	27	31	20	-5.6	0.08
L1 Domino 94446	27	14.11	96-97	35	7.8	22	27	22	-8.1	0.10
L1 Domino 94458	30	15.69	96	11	6.0	21	26	27	-1.0	0.08
L1 Domino 95344	26	14.63	97-98	24	9.0	29	43	28	-4.5	0.12



L1 Domino 99375: Source of DNA for bacterial artificial chromosome library used in genetic research and sire of the Line 1 Hereford cow that provided the basis for the bovine genome sequence.

Sire	F _x	Generation number	Year	N	Growth traits			Maternal qualities		
					BW	G1	G2	MM	CD	ST
L1 Domino 95430	26	15.12	97-98	20	7.7	29	40	26	-7.6	0.11
L1 Domino 95439	31	16.47	97-98	44	7.0	27	42	31	-3.4	0.05
L1 Domino 95465	27	15.48	97-98	28	8.2	34	37	20	-4.9	0.15
L1 Domino 96855	28	15.52	99	27	10.0	26	31	38	0.2	0.13
L1 Domino 96868	26	15.11	98-99	66	9.1	25	31	14	-0.6	0.09
L1 Domino 96871	26	14.88	99	15	9.0	30	37	24	-6.2	0.07
L1 Domino 96882	28	16.60	98-99	5	7.5	24	33	22	-1.1	0.10
L1 Domino 96961	30	16.13	99	15	11.3	34	41	29	-1.8	0.12
L1 Domino 96988	31	16.32	99	23	5.1	21	18	27	-2.3	0.09
L1 Domino 97315	27	16.27	99-00	27	8.2	28	33	22	-3.6	0.05
L1 Domino 97329	28	16.04	99-00	29	6.2	29	23	26	-5.4	0.12
L1 Domino 97349	30	16.24	99-00	30	7.8	27	46	29	-2.2	0.13
L1 Domino 97363	27	15.90	99-00	33	9.7	30	25	19	-3.4	0.09
L1 Domino 98273	28	16.56	00	15	7.0	30	35	27	-4.3	0.17
L1 Domino 98281	28	16.11	00-01	20	3.9	18	28	26	-7.1	0.13
L1 Domino 98300	30	17.21	00-01	46	8.8	33	45	33	-4.3	0.10
L1 Domino 98318	31	16.41	00	7	8.9	36	36	25	-5.4	0.08
L1 Domino 98324	29	16.20	00-01	21	8.2	28	34	25	-6.9	0.11
L1 Domino 98361	30	17.31	00	1	10.2	33	45	35	-3.3	0.08
L1 Domino 98364	29	16.01	00	20	9.7	25	32	21	-0.6	0.07
L1 Domino 98367	27	15.83	00-01	33	7.8	28	35	39	-8.1	0.14

Sire	F _x	Generation number	Year	N	Growth traits			Maternal qualities		
					BW	G1	G2	MM	CD	ST
L1 Domino 98377	30	16.30	00	15	10.0	33	40	26	-6.3	0.12
L1 Domino 99360	30	16.85	01-02	23	11.4	38	47	32	-0.6	0.14
L1 Domino 99371	30	16.55	01-02	20	9.1	31	30	36	-2.6	0.03
L1 Domino 99375	30	17.19	01	18	8.0	26	36	14	-2.0	0.08
L1 Domino 99402	29	17.08	01-02	32	9.6	29	25	31	-4.6	0.11
L1 Domino 99428	29	16.99	01-02	33	7.3	30	22	22	-2.7	0.11
L1 Domino 99441	29	16.94	01	9	8.6	28	31	13	-1.8	0.08
L1 Domino 99496	29	17.19	01-02	34	9.6	29	41	37	-3.5	0.13
L1 Domino 99513	28	15.78	01-02	24	8.4	34	44	20	-4.1	0.12
L1 Domino 00478	28	17.02	02-03	31	6.5	32	32	25	-5.8	0.17
L1 Domino 00489	29	17.08	02-03	33	10.1	30	34	29	-0.7	0.06
L1 Domino 00499	29	17.09	02-03	35	9.1	30	45	24	1.0	0.10
L1 Domino 00525	30	16.94	02	4	7.7	27	33	28	-4.1	0.13
L1 Domino 00546	29	17.87	02-03	48	11.6	35	48	35	-2.0	0.07
L1 Domino 00549	34	17.55	03	20	11.4	35	39	27	-4.2	0.07
L1 Domino 00552	28	16.74	02-03	24	12.2	28	34	23	-0.6	0.10
L1 Domino 01347	28	16.89	03-04	23	8.2	29	28	31	-5.4	0.19
L1 Domino 01354	28	16.90	03-04	19	8.4	28	38	22	-8.5	0.13
L1 Domino 01362	28	17.22	03-04	12	9.8	32	40	30	-5.9	0.16
L1 Domino 01384	31	18.18	03-04	41	7.0	34	48	33	-4.7	0.12
L1 Domino 01418	27	16.92	03-04	42	7.8	31	40	41	-4.6	0.09
L1 Domino 01460	30	17.22	03	13	8.2	29	30	28	-0.1	0.07
L1 Domino 01475	29	16.76	04	11	6.8	31	41	25	-4.1	0.16
L1 Domino 02336	32	17.67	04-05	22	10.7	32	43	25	-2.9	0.11
L1 Domino 02347	30	17.90	04-05	29	12.8	35	50	31	-3.3	0.16
L1 Domino 02349	29	17.45	04-05	28	8.9	30	33	33	-2.0	0.10
L1 Domino 02382	30	17.82	04-05	22	10.5	38	38	26	-3.2	0.08
L1 Domino 02423	29	17.78	04-05	19	9.9	34	42	31	-7.4	0.15
L1 Domino 02492	28	17.13	04-05	32	11.4	36	41	34	-1.3	0.04
L1 Domino 03426	31	18.68	05-06	30	7.9	35	44	36	-5.9	0.08
L1 Domino 03442	29	17.60	05	1	10.6	29	35	29	-1.1	0.09
L1 Domino 03447	31	18.20	05-06	36	11.6	36	40	30	-3.3	0.16
L1 Domino 03473	29	17.44	05-06	32	9.4	32	37	46	-4.1	0.08
L1 Domino 03490	30	17.70	05-06	33	12.6	36	34	32	1.2	0.09
L1 Domino 03541	31	17.96	05-06	26	9.4	34	40	24	-2.7	0.10
L1 Domino 03564	30	17.49	05-06	27	7.9	30	42	26	-5.4	0.13
L1 Domino 04380	30	18.42	06-07	34	12.2	36	49	38	-5.2	0.14
L1 Domino 04434	31	17.91	06-07	36	8.6	31	43	35	-3.8	0.08
L1 Domino 04457	30	18.89	06-07	27	11.7	39	45	27	-5.1	0.12
L1 Domino 04490	29	18.04	07	18	6.4	29	38	26	-4.8	0.16
L1 Domino 04570	28	18.01	06-07	38	12.4	31	43	36	-2.5	0.15

Sire	F _x	Generation number	Years	N	Growth traits			Maternal qualities		
					BW	G1	G2	MM	CD	ST
L1 Domino 05426	30	19.15	08	24	11.0	38	49	34	-4.7	0.10
L1 Domino 05469	31	19.24	08	17	9.1	34	42	33	-3.6	0.12
L1 Domino 05496	30	17.97	07-08	28	12.9	36	36	32	-2.4	0.13
L1 Domino 05505	30	18.21	07-08	36	10.1	37	51	23	-4.6	0.12
L1 Domino 05516	28	18.28	07-08	32	10.5	37	54	31	-2.7	0.13
L1 Domino 06453	30	18.84	08	19	10.9	35	43	27	-4.9	0.14
L1 Domino 06474	30	18.93	08	15	9.7	34	44	30	-4.9	0.12
L1 Domino 06509	30	19.18	08	17	9.6	33	44	35	-6.0	0.15
L1 Domino 06575	28	18.16	08	20	10.0	31	36	31	-2.4	0.15



Fort Keogh Livestock and Range Research Laboratory
243 Fort Keogh Rd.
Miles City, MT 59301



Visit us on the Web at <http://www.ars.usda.gov/Main/docs.htm?docid=3087>