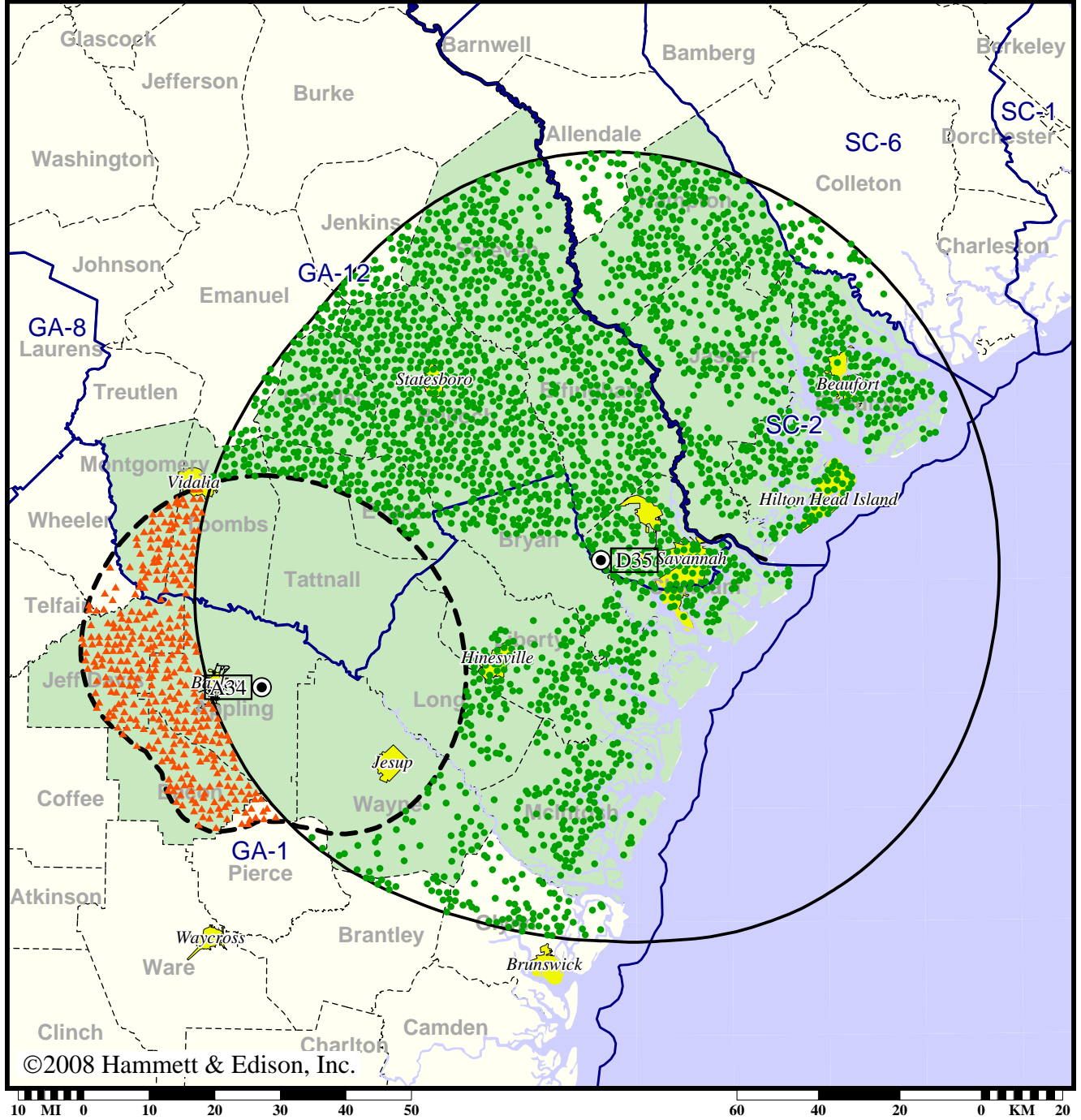


TV Station WGSA • Analog Channel 34, DTV Channel 35 • Baxley, GA

Expected Change In Coverage: Licensed Operation

Licensed (solid): 1000 kW ERP at 349 m HAAT
vs. Analog (dashed): 316 kW ERP at 147 m HAAT

Market: Savannah, GA



©2008 Hammett & Edison, Inc.

- Coverage gained after DTV transition
- (no symbol) No change in coverage
- ▲ Coverage lost after DTV transition

Savannah, GA

WGSA

Population Receiving Analog Service	106,192
Population Receiving Digital Service.....	728,975

The following statistics pertain only to the area outside the analog service contour:

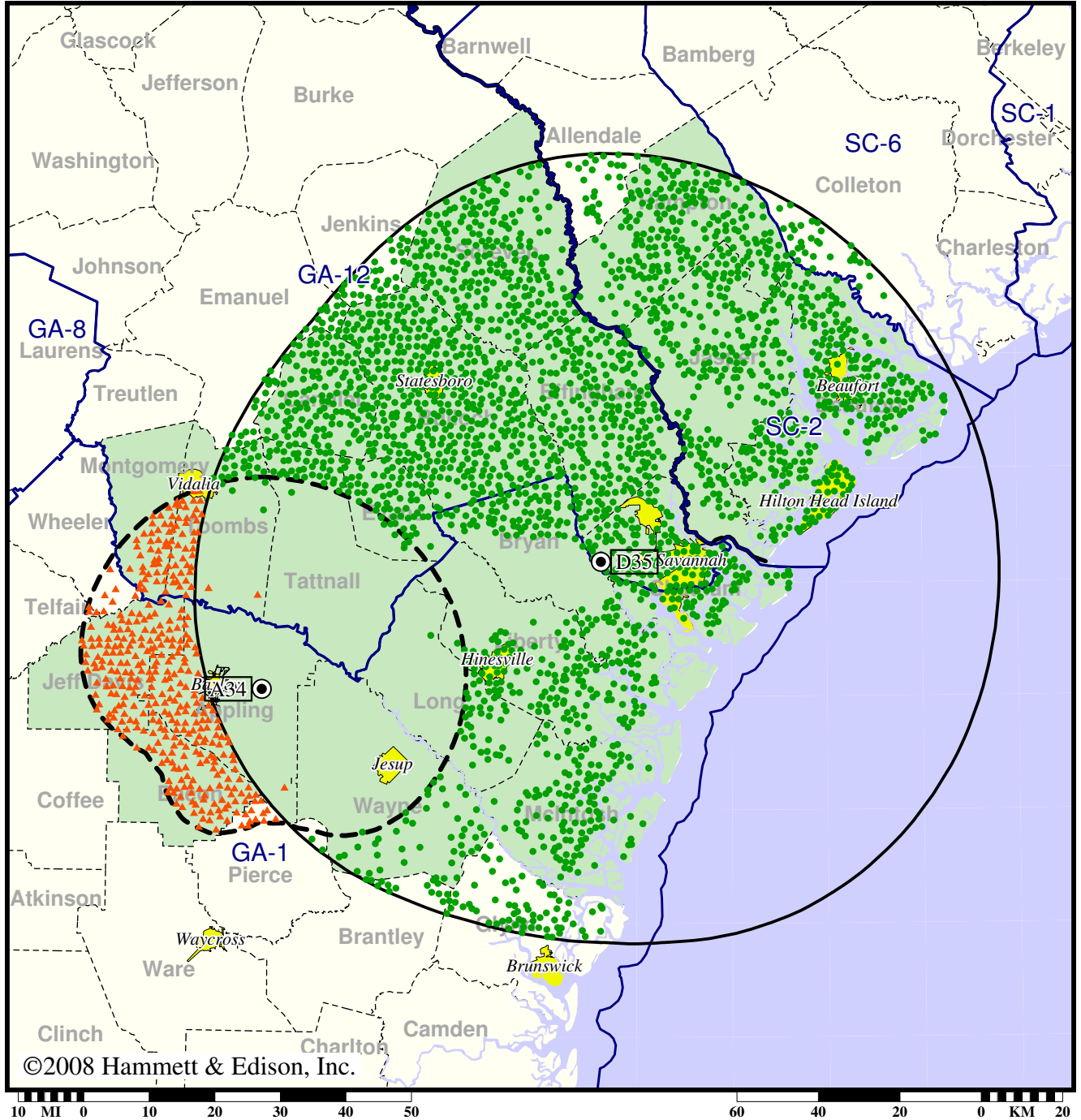
Analog Population Losing Service	29,359
Population Gaining Digital Service	650,466
Net Gain	621,107

TV Station WGSA • Analog Channel 34, DTV Channel 35 • Baxley, GA

Expected Change In Coverage: Licensed Operation

Licensed (solid): 1000 kW ERP at 349 m HAAT
vs. Analog (dashed): 316 kW ERP at 147 m HAAT

Market: Savannah, GA



- Coverage gained after DTV transition
- (no symbol) No change in coverage
- ▲ Coverage lost after DTV transition

Savannah, GA

WGSA

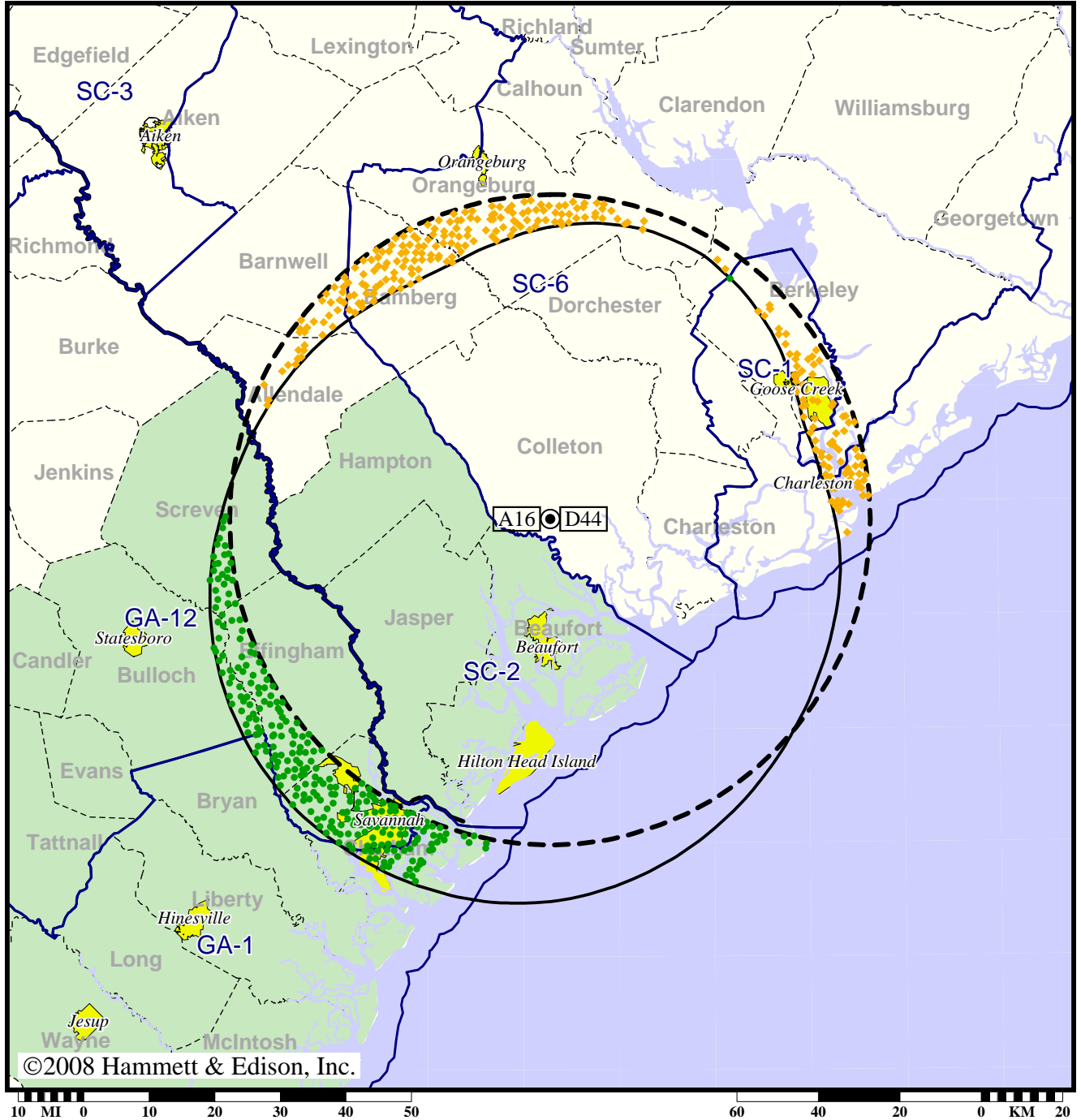
Population Receiving Analog Service	106,192
Population Receiving Digital Service.....	728,975
Analog Population Losing Service	29,435
Population Gaining Digital Service	652,218
Net Gain	622,783

Station WJWJ-TV • Analog Channel 16, DTV Channel 44 • Beaufort, SC

Expected Change In Coverage: Licensed Operation

Licensed (solid): 440 kW ERP at 364 m HAAT, Network: PBS
vs. Analog (dashed): 847 kW ERP at 388 m HAAT, Network: PBS

Market: Savannah, GA



- Coverage gained after DTV transition
- (no symbol) No change in coverage
- ◆ Coverage lost but still served by same network

Savannah, GA

WJWJ-TV

Population Receiving Analog Service	738,508
Population Receiving Digital Service.....	833,767

The following statistics pertain only to the area outside the analog service contour:

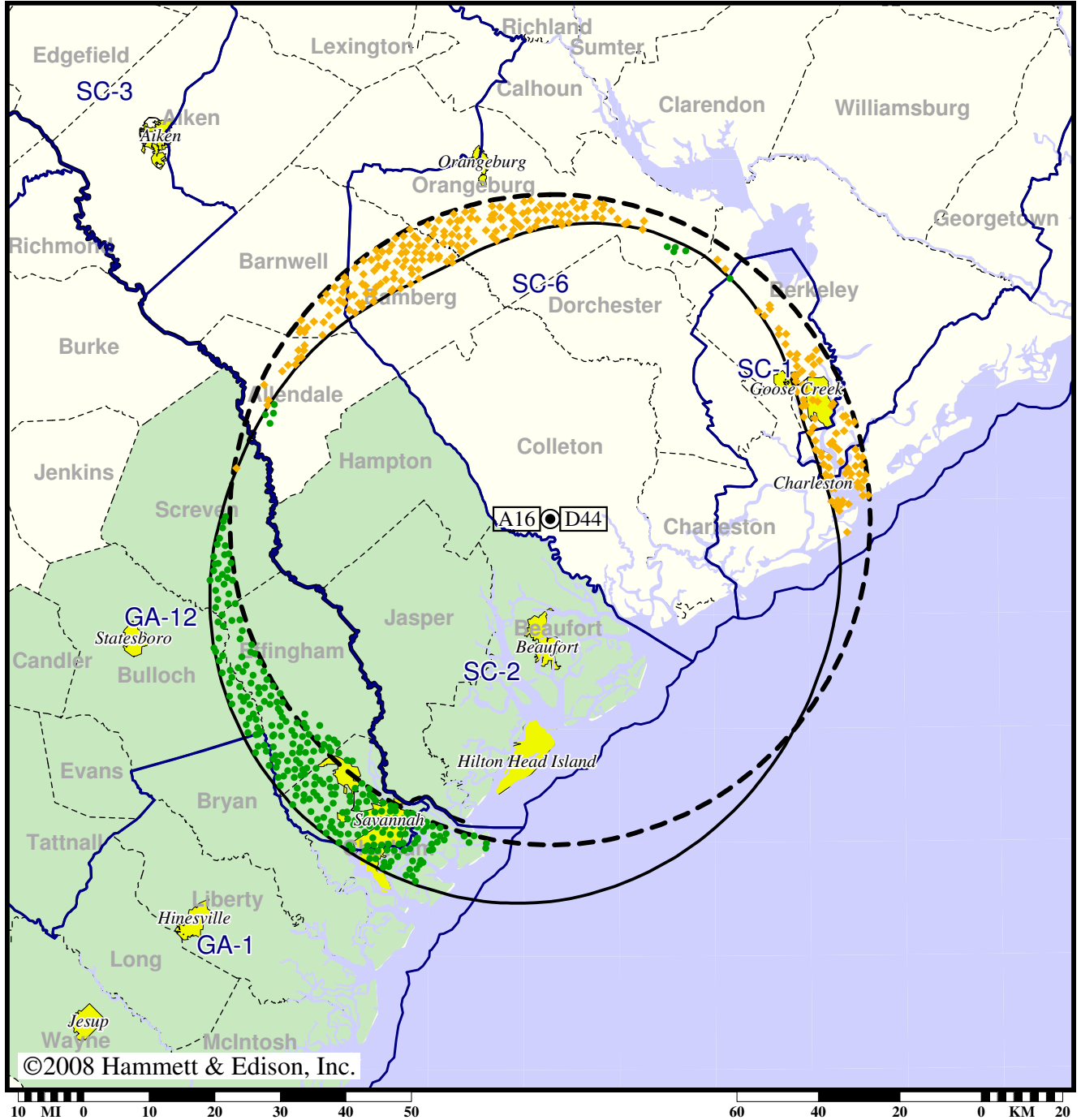
Analog Population Losing Service	134,867
Population Gaining Digital Service	226,956
Net Gain	92,089

Station WJWJ-TV • Analog Channel 16, DTV Channel 44 • Beaufort, SC

Expected Change In Coverage: Licensed Operation

Licensed (solid): 440 kW ERP at 364 m HAAT, Network: PBS
vs. Analog (dashed): 847 kW ERP at 388 m HAAT, Network: PBS

Market: Savannah, GA



©2008 Hammett & Edison, Inc.

- Coverage gained after DTV transition
- (no symbol) No change in coverage
- ◆ Coverage lost but still served by same network

Savannah, GA

WJWJ-TV

Population Receiving Analog Service	738,508
Population Receiving Digital Service.....	833,767
Analog Population Losing Service	135,258
Population Gaining Digital Service	230,517
Net Gain	95,259