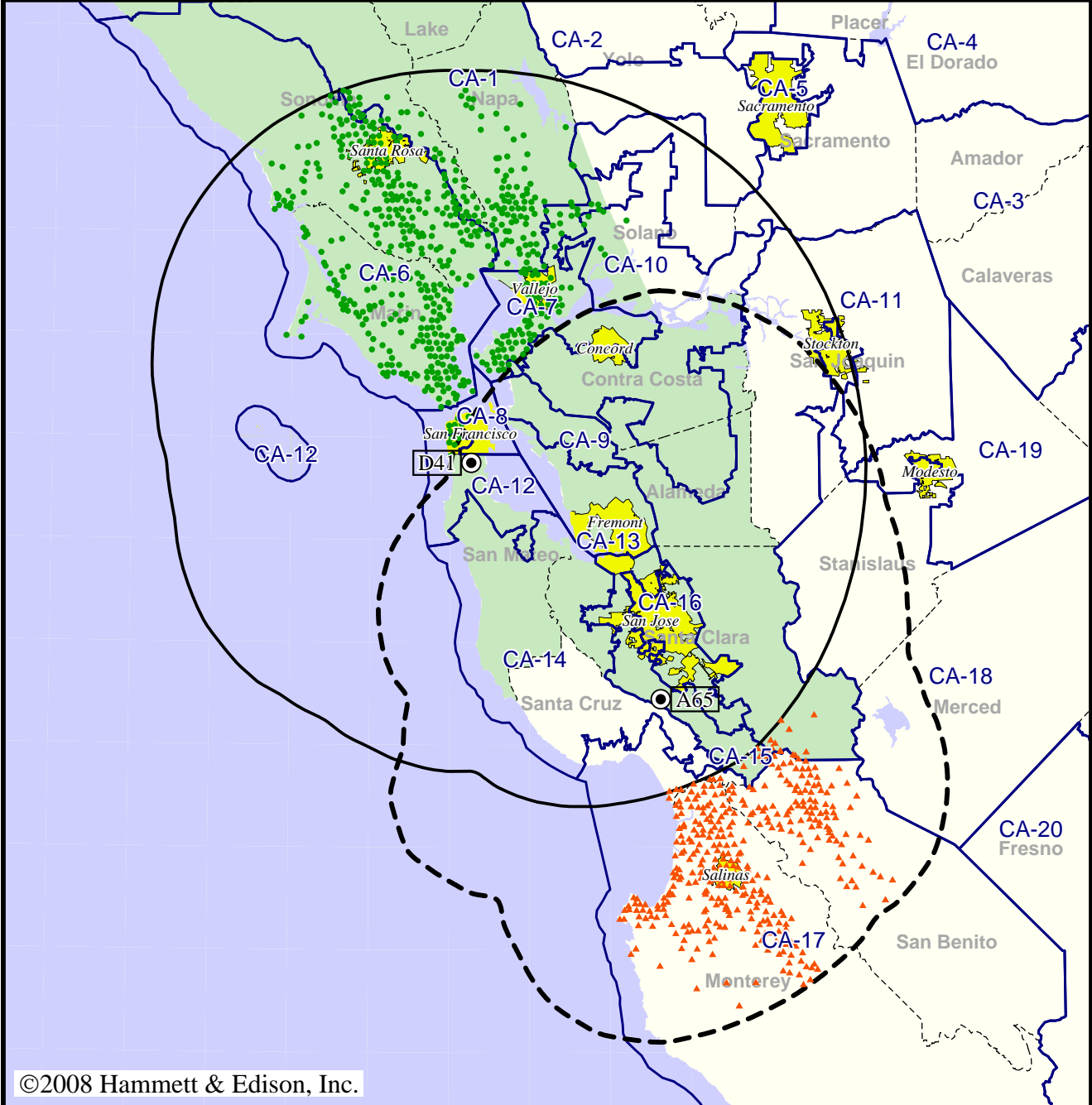


TV Station KKPX • Analog Channel 65, DTV Channel 41 • San Jose, CA

Expected Change In Coverage: Licensed Operation

Licensed (solid): 1000 kW ERP at 418 m HAAT
vs. Analog (dashed): 3090 kW ERP at 812 m HAAT

Market: San Francisco-Oakland-San Jose, CA



©2008 Hammett & Edison, Inc.

- Coverage gained after DTV transition
- (no symbol) No change in coverage
- ▲ Coverage lost after DTV transition

San Francisco-Oakland-San Jose, CA

KKPX

Population Receiving Analog Service 4,430,872
Population Receiving Digital Service..... 5,974,604

The following statistics pertain only to the area outside
the analog service contour:

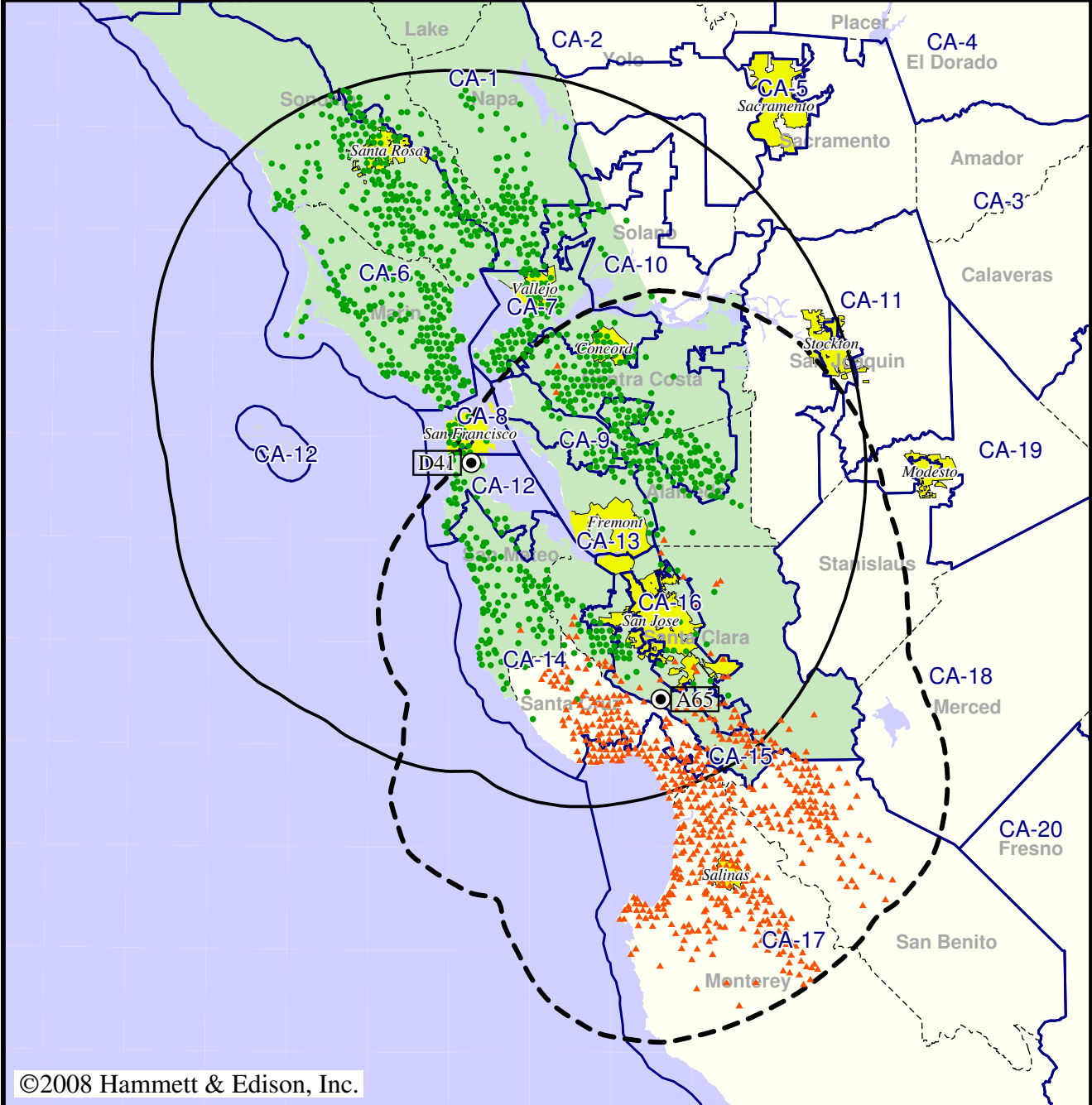
Analog Population Losing Service 388,372
Population Gaining Digital Service 1,193,293
Net Gain 804,921

TV Station KKPX • Analog Channel 65, DTV Channel 41 • San Jose, CA

Expected Change In Coverage: Licensed Operation

Licensed (solid): 1000 kW ERP at 418 m HAAT
vs. Analog (dashed): 3090 kW ERP at 812 m HAAT

Market: San Francisco-Oakland-San Jose, CA



©2008 Hammett & Edison, Inc.

- Coverage gained after DTV transition
- (no symbol) No change in coverage
- ▲ Coverage lost after DTV transition

San Francisco-Oakland-San Jose, CA

KKPX

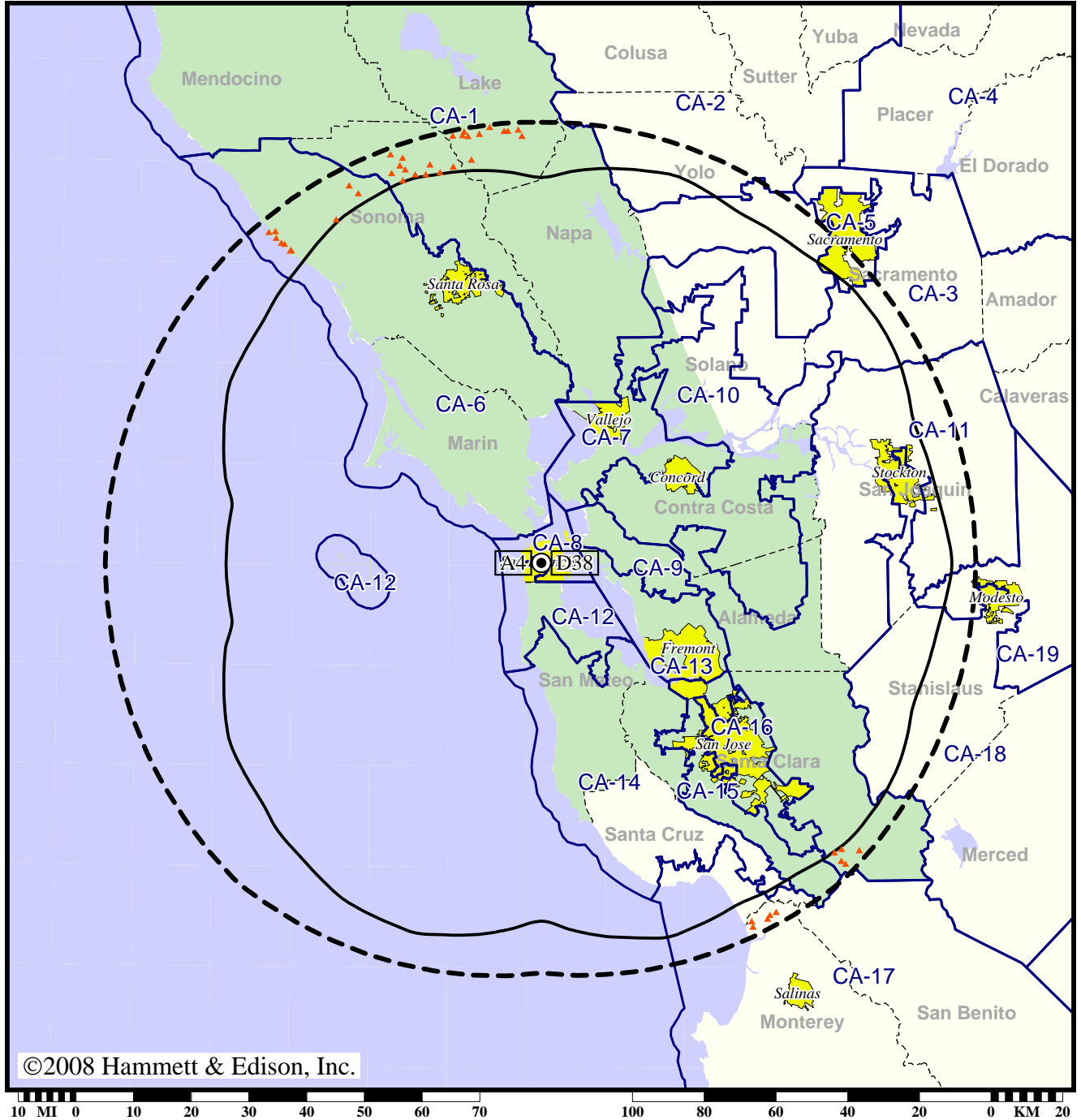
Population Receiving Analog Service	4,430,872
Population Receiving Digital Service.....	5,974,604
Analog Population Losing Service	686,916
Population Gaining Digital Service	2,230,648
Net Gain	1,543,732

Station KRON-TV • Analog Channel 4, DTV Channel 38 • San Francisco, CA

Expected Change In Coverage: Granted Construction Permit

CP (solid): 1000 kW ERP at 512 m HAAT
vs. Analog (dashed): 100 kW ERP at 506 m HAAT

Market: San Francisco-Oakland-San Jose, CA



©2008 Hammett & Edison, Inc.

- (no symbol) No change in coverage
- ▲ Coverage lost after DTV transition

San Francisco-Oakland-San Jose, CA

KRON-TV

Population Receiving Analog Service6,177,762
Population Receiving Digital Service.....6,392,816

The following statistics pertain only to the area outside
the analog service contour:

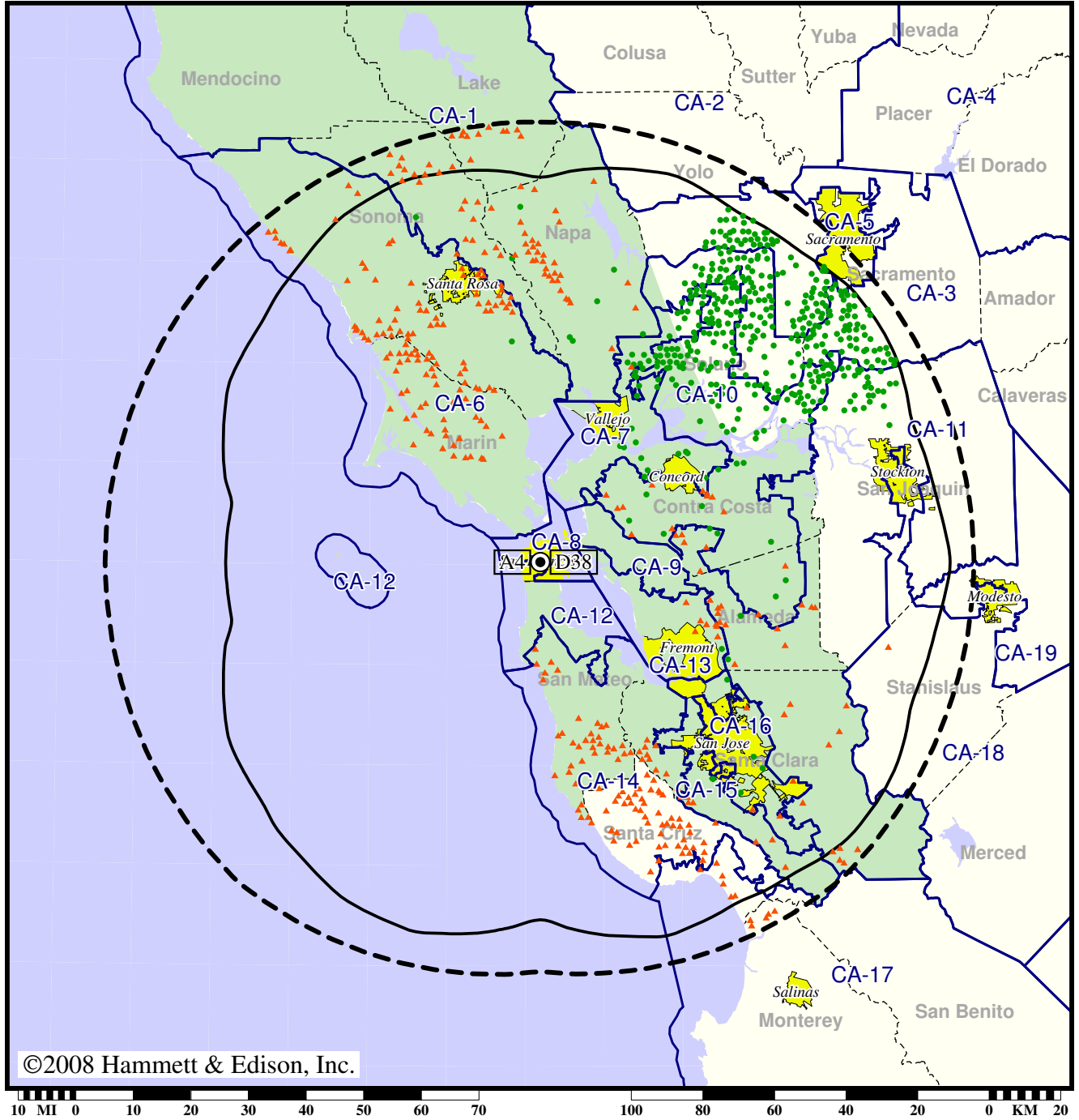
Analog Population Losing Service7,891
Population Gaining Digital Service0
Net Gain-7,891

Station KRON-TV • Analog Channel 4, DTV Channel 38 • San Francisco, CA

Expected Change In Coverage: Granted Construction Permit

CP (solid): 1000 kW ERP at 512 m HAAT
vs. Analog (dashed): 100 kW ERP at 506 m HAAT

Market: San Francisco-Oakland-San Jose, CA



©2008 Hammett & Edison, Inc.

- Coverage gained after DTV transition
- (no symbol) No change in coverage
- ▲ Coverage lost after DTV transition

San Francisco-Oakland-San Jose, CA

KRON-TV

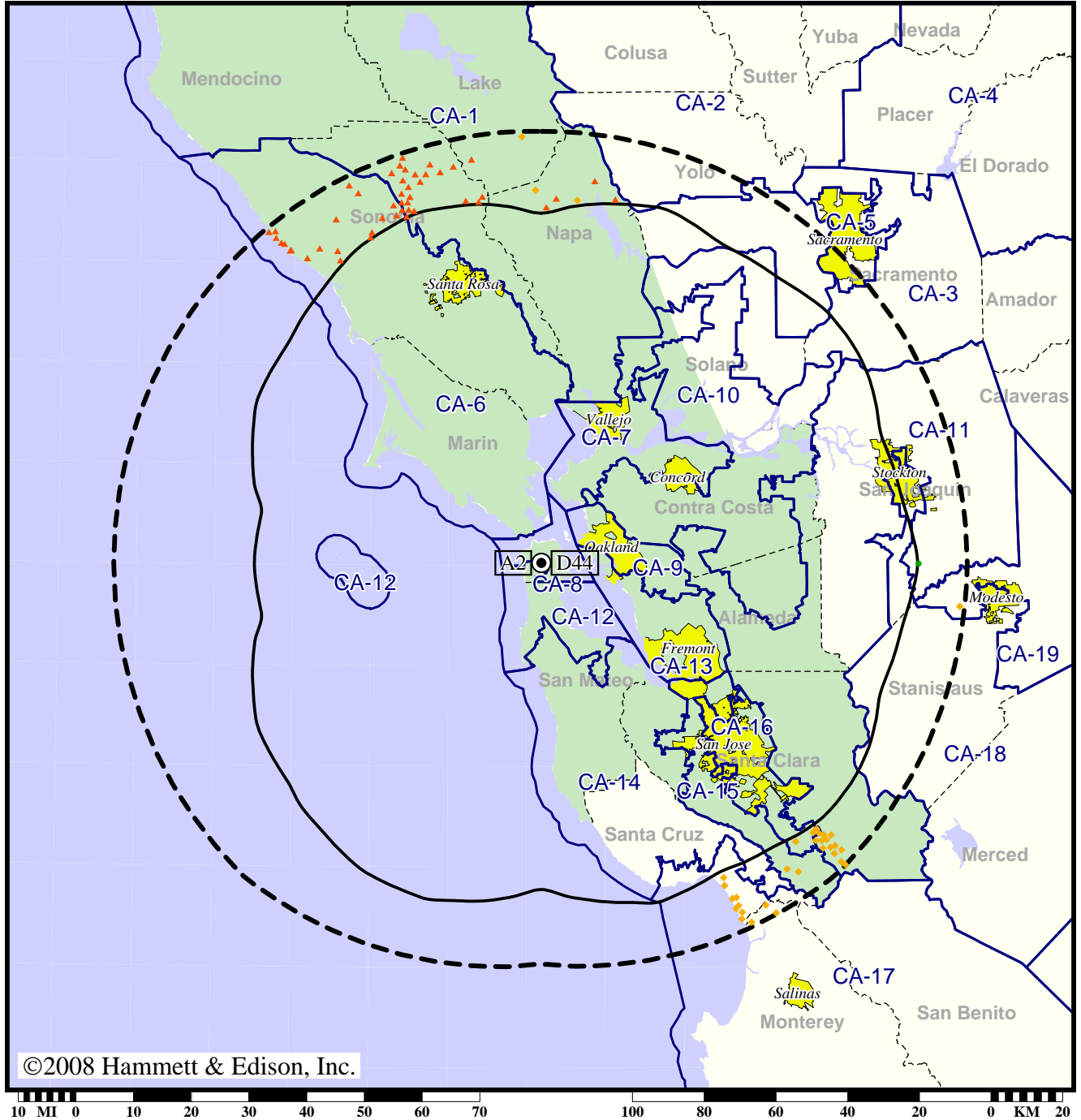
Population Receiving Analog Service	6,177,762
Population Receiving Digital Service.....	6,392,816
Analog Population Losing Service	148,348
Population Gaining Digital Service	363,402
Net Gain	215,054

TV Station KTVU • Analog Channel 2, DTV Channel 44 • Oakland, CA

Expected Change In Coverage: Granted Construction Permit

CP (solid): 400 kW ERP at 512 m HAAT, Network: Fox
vs. Analog (dashed): 100 kW ERP at 479 m HAAT, Network: Fox

Market: San Francisco-Oakland-San Jose, CA



- Coverage gained after DTV transition
- (no symbol) No change in coverage
- ◆ Coverage lost but still served by same network
- ▲ Coverage lost and no other service by same network

San Francisco-Oakland-San Jose, CA

KTVU

Population Receiving Analog Service6,326,012
Population Receiving Digital Service.....6,091,267

The following statistics pertain only to the area outside
the analog service contour:

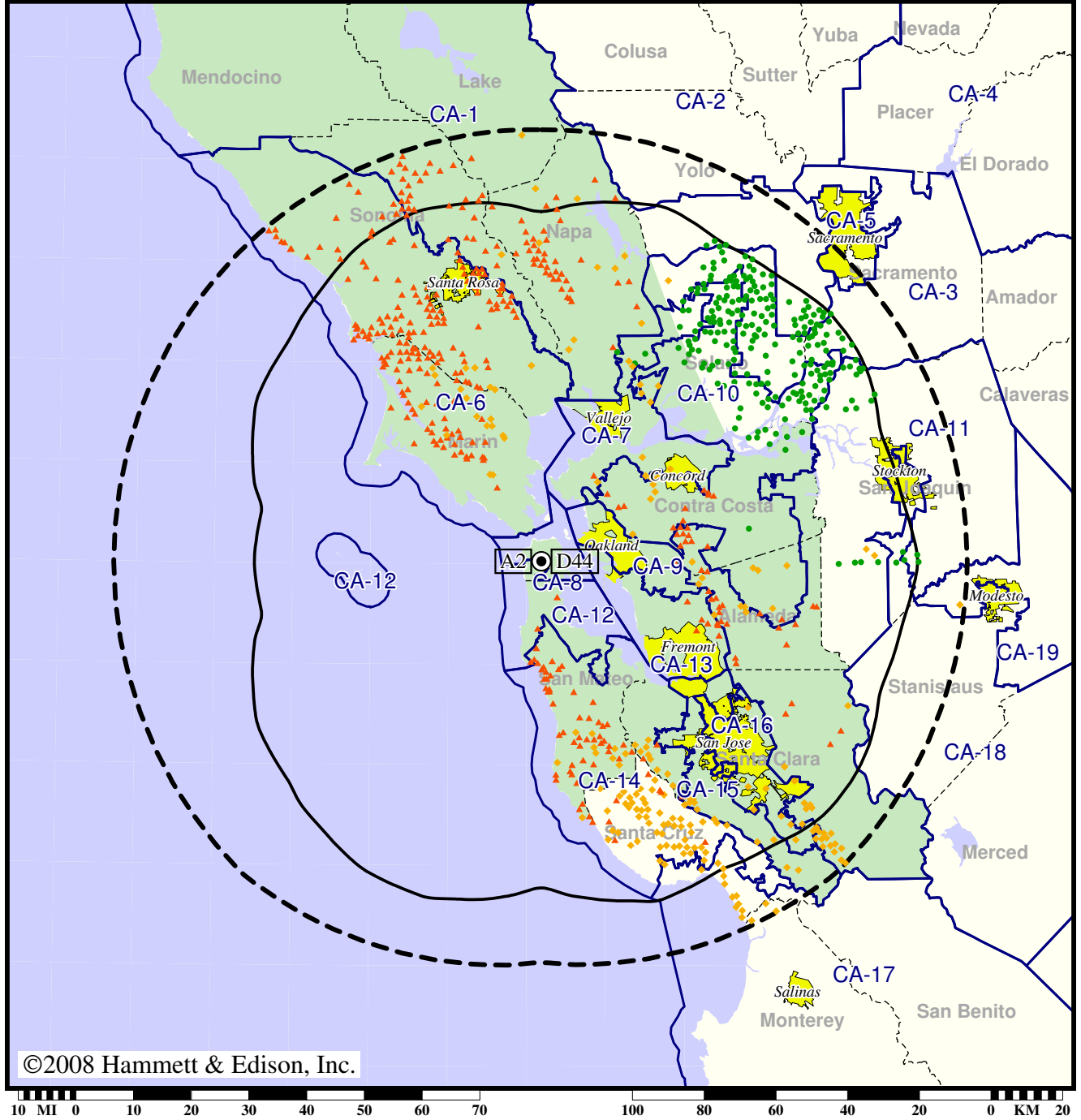
Analog Population Losing Service22,224
Population Gaining Digital Service0
Net Gain-22,224

TV Station KTVU • Analog Channel 2, DTV Channel 44 • Oakland, CA

Expected Change In Coverage: Granted Construction Permit

CP (solid): 400 kW ERP at 512 m HAAT, Network: Fox
 vs. Analog (dashed): 100 kW ERP at 479 m HAAT, Network: Fox

Market: San Francisco-Oakland-San Jose, CA



©2008 Hammett & Edison, Inc.



- Coverage gained after DTV transition
- (no symbol) No change in coverage
- ◆ Coverage lost but still served by same network
- ▲ Coverage lost and no other service by same network

San Francisco-Oakland-San Jose, CA

KTVU

Population Receiving Analog Service	6,326,012
Population Receiving Digital Service.....	6,091,267
Analog Population Losing Service	337,193
Population Gaining Digital Service	102,448
Net Gain	-234,745