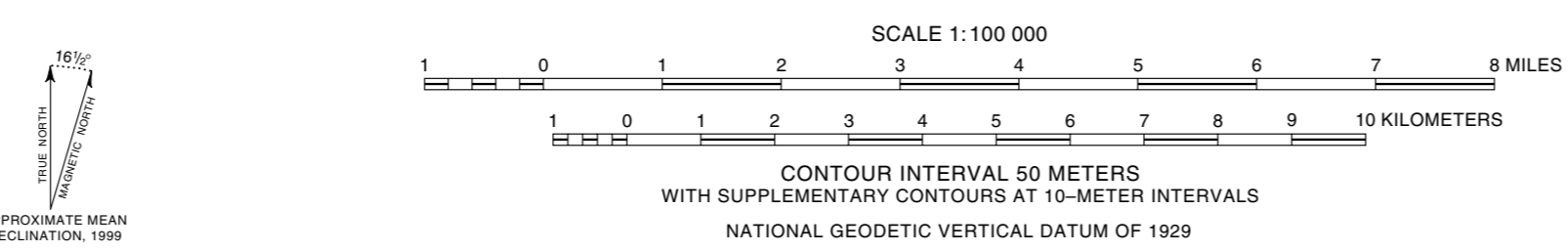
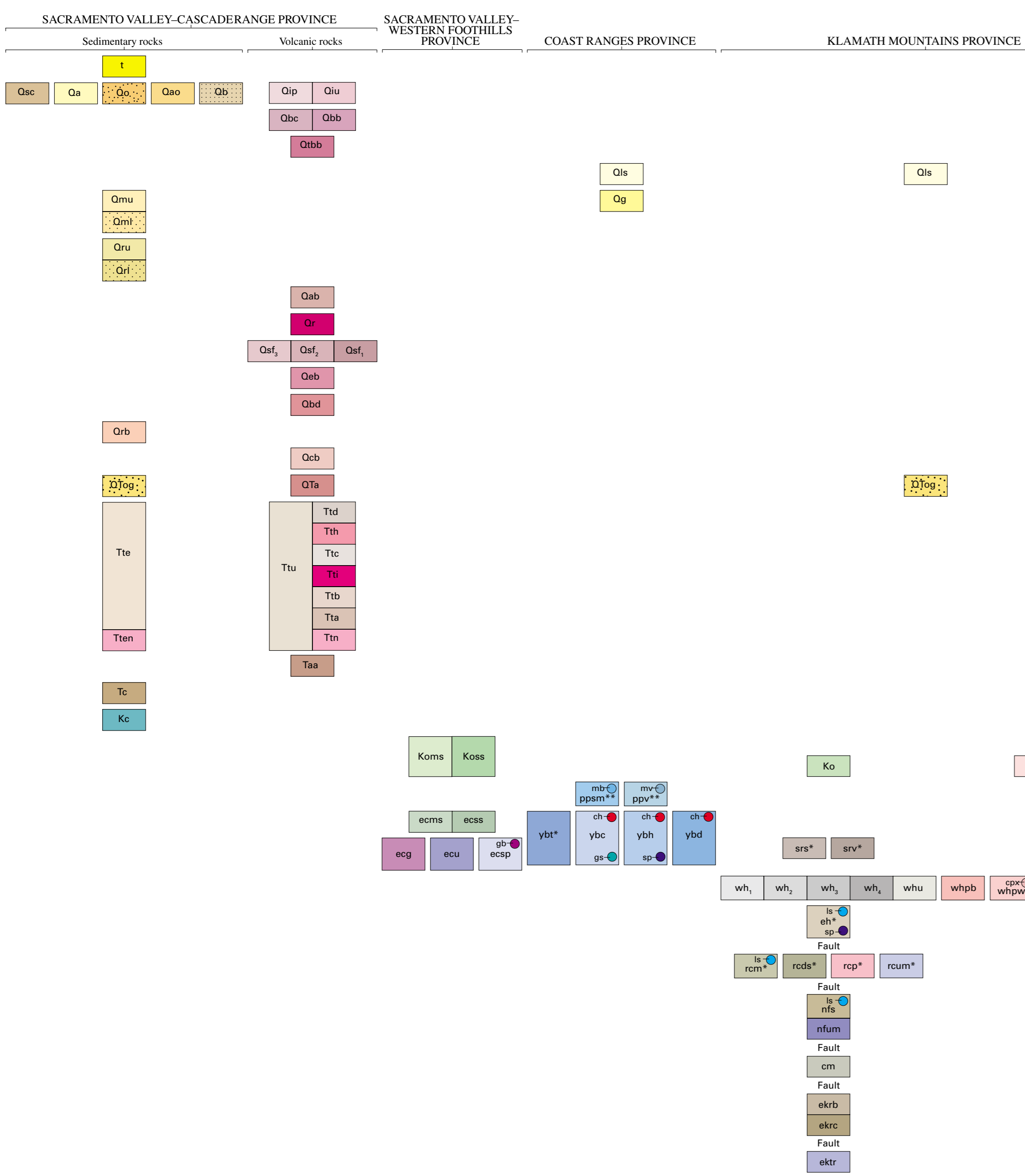


Base from U.S. Geological Survey, 1979
Universal Transverse Mercator projection



Geology compiled by 1989-91 GIS compilation by J.D. Coel, 1994-5
Edited by Taryn A. Lindquist and Glenn M. Stone; digital cartography by Taryn A. Lindquist, with assistance from Sara Boone, Susan Mayfield, and David Lardoff
Manuscript approved for publication March 6, 1995

CORRELATION OF MAP UNITS
[*See List of Map Units for precise unit ages. **Age shows is metamorphic age (protolith age unknown)]



LIST OF MAP UNITS
[See Description of Map Units for complete unit descriptions]

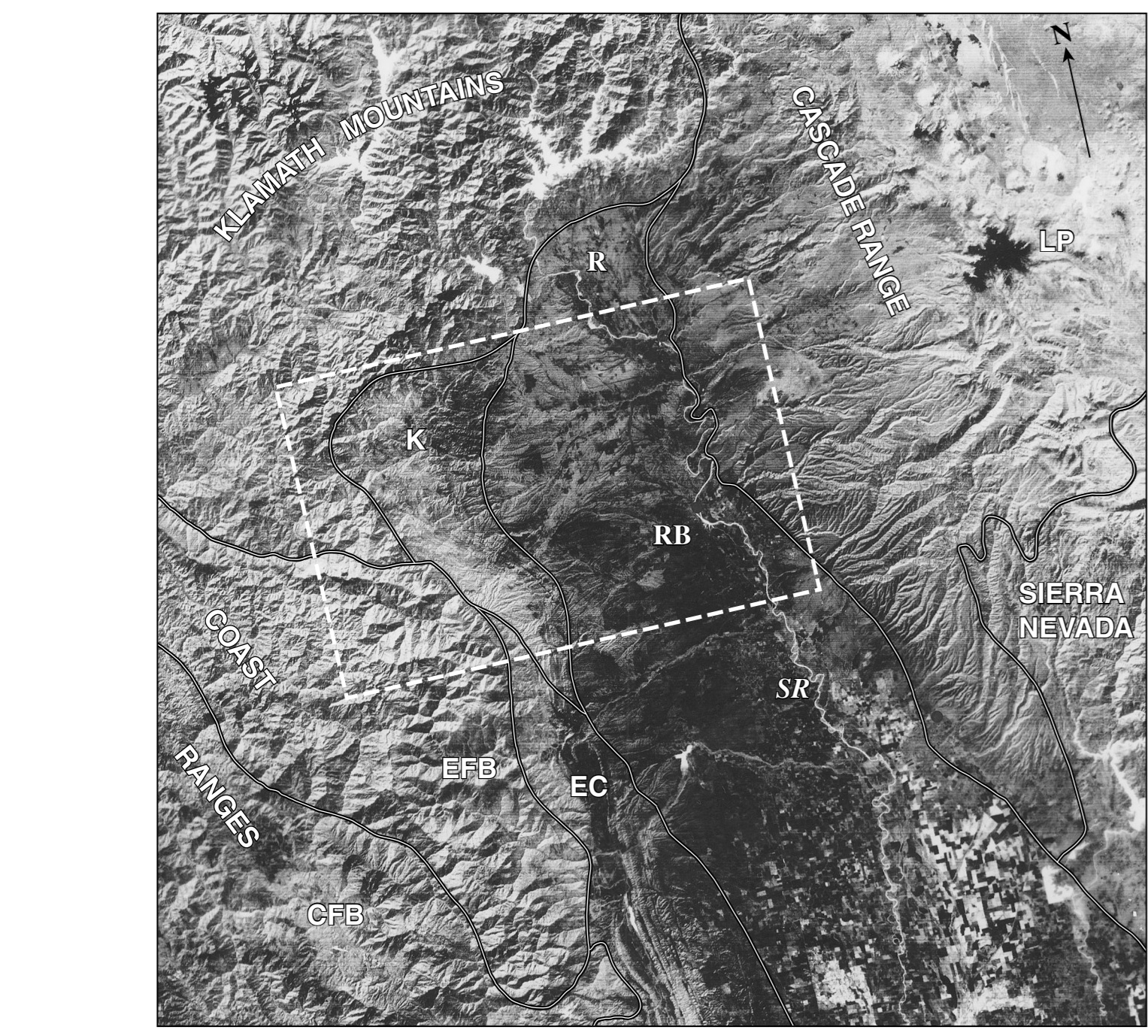
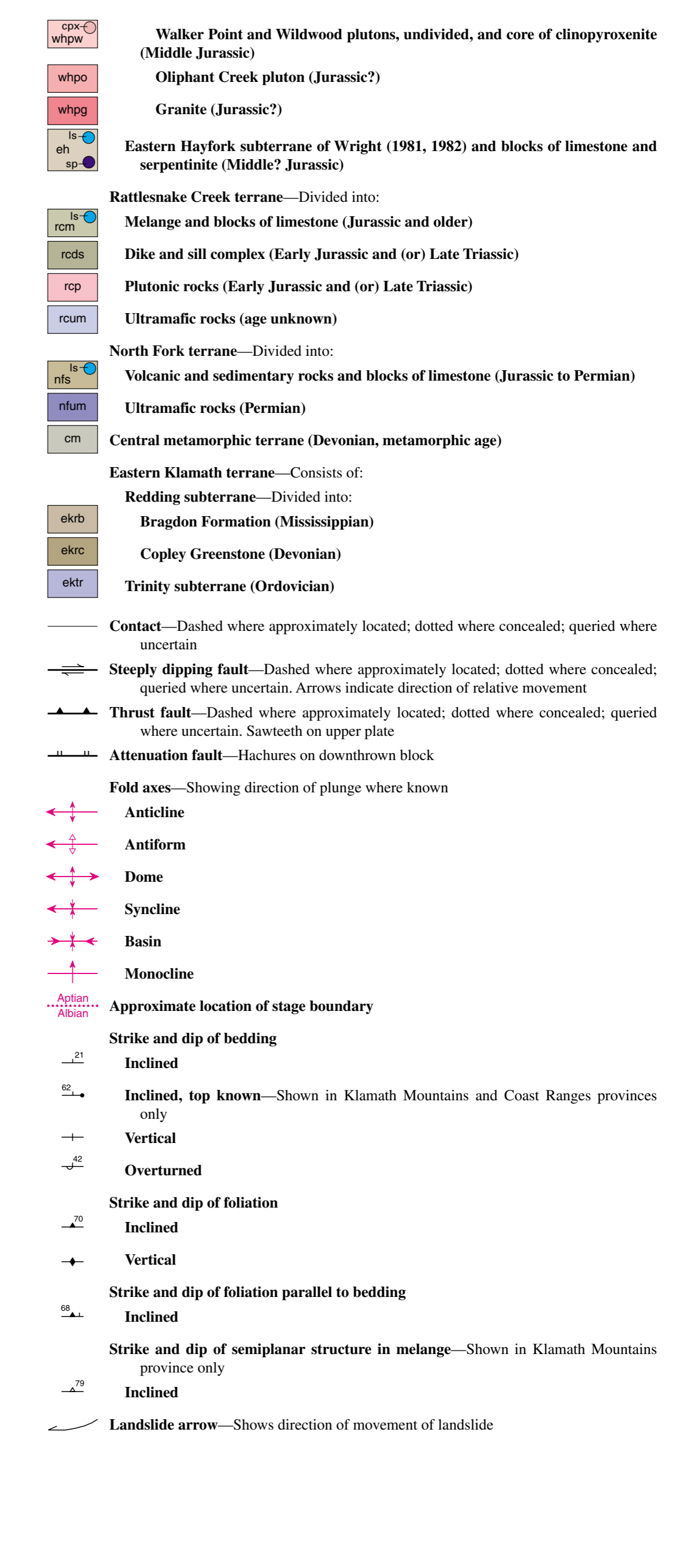
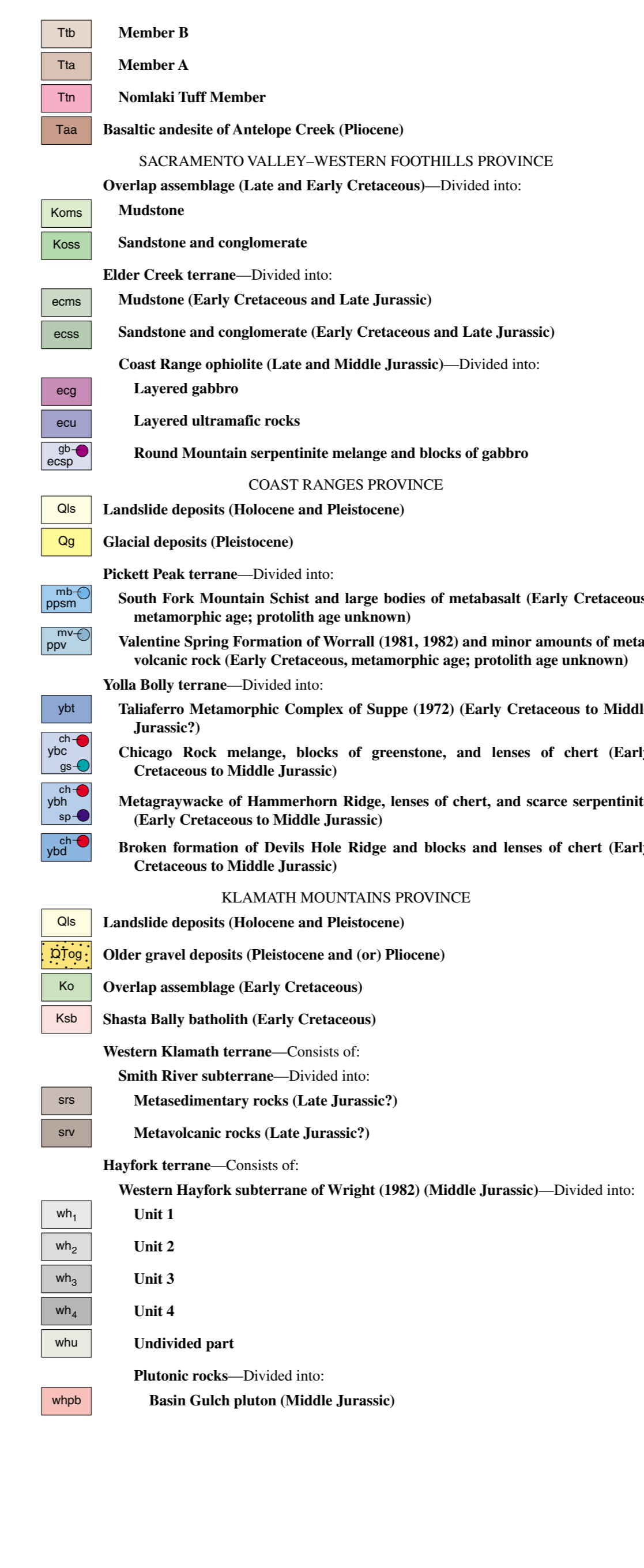
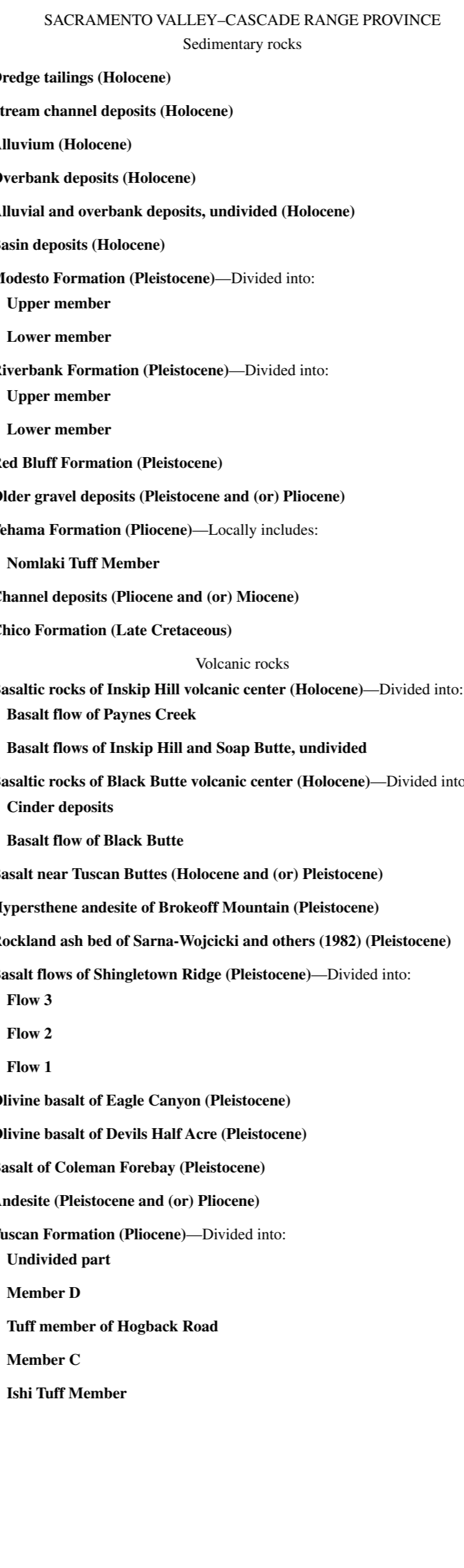
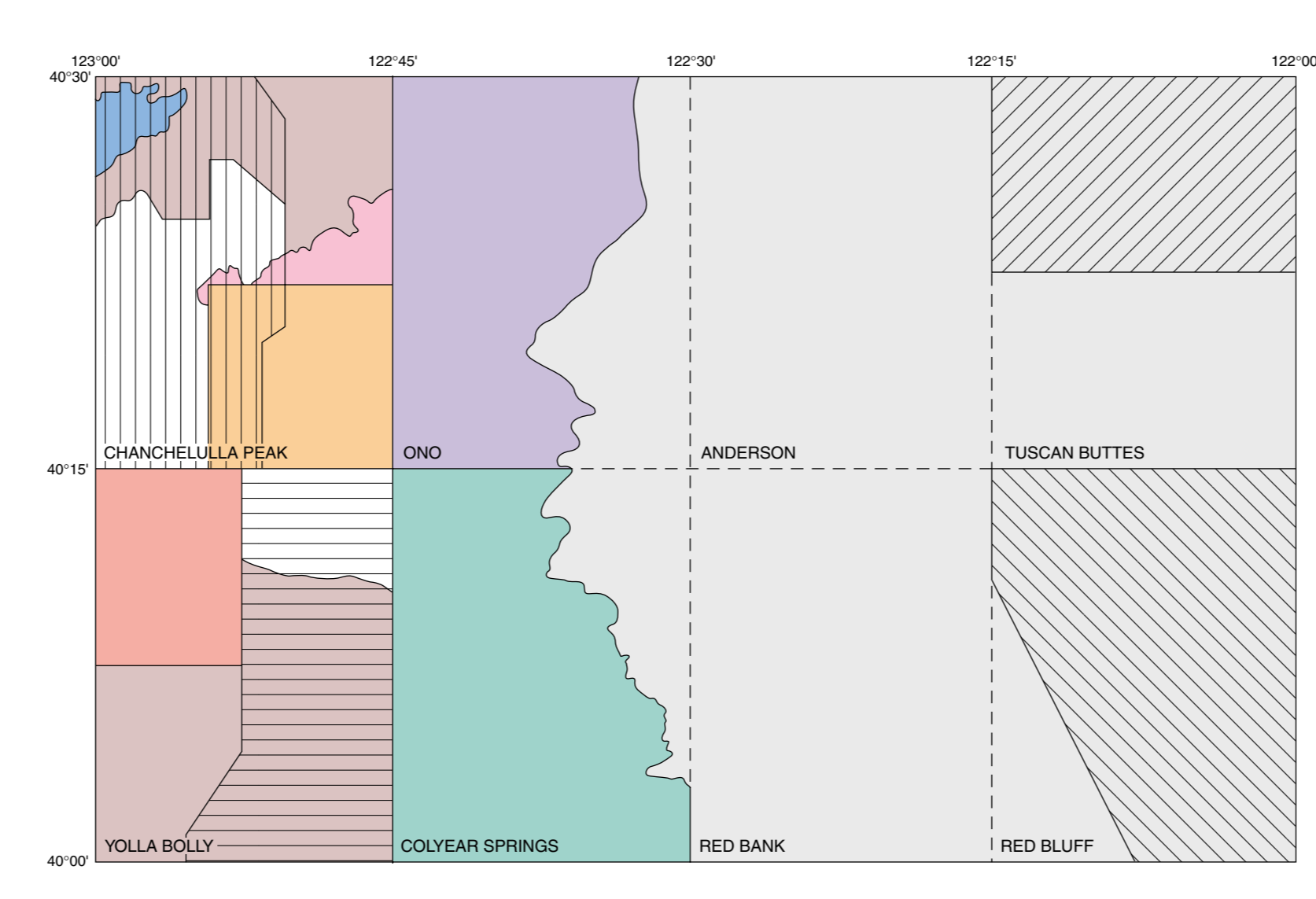
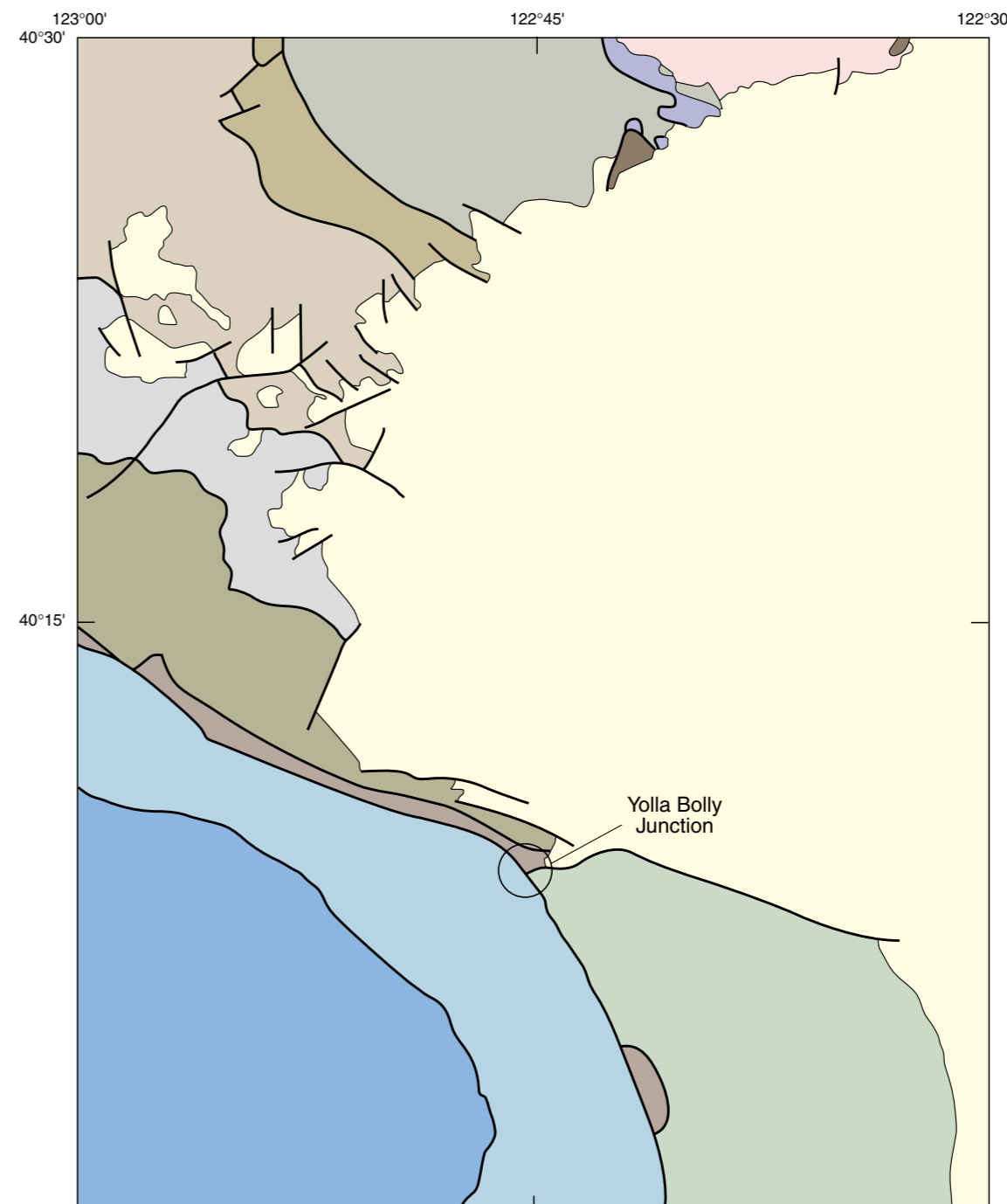


Figure 1. LANDSAT image centered on the Sacramento Valley, showing location of geologic map of Red Bluff 30' x 60' scale quadrangle (dashed white outline) within approximately 85 km in relation to geologic provinces in northern California. Abbreviations: CFB, Central belt (Franciscan Complex); EC, Elder Creek terrane (Great Valley province); EFB, Eastern belt (Franciscan Complex); K, Cretaceous overlap assemblage (Great Valley province); LP, Lassen Peak; R, city of Redding; RB, city of Red Bluff; SR, Sacramento River.



EXPLANATION
Bailey and Jones, 1973
Blake, 1965
Blake and others, 1984
Harwood and others, 1980
Harwood and others, 1981
Helley and others, 1981; see also, Helley and Harwood, 1983
Fisher and others, 1983
Mayhew, 1967
Murphy and others, 1969
Gary Peterson, unpub. mapping, in Helley and Harwood, 1983
Wright, 1981



EXPLANATION
Cenozoic and Cretaceous overlap deposits, undivided
Elder Creek terrane
COAST RANGES PROVINCE
Pickett Peak terrane
Yolla Bolly terrane
KLAMATH MOUNTAINS PROVINCE
Shasta Bally batholith
Western Klamath terrane—Divided into:
Smith River subterrane
Hayfork terrane—Divided into:
Western Hayfork subterrane
Eastern Hayfork subterrane
Rattlesnake Creek terrane
North Fork terrane
Central melanorphic terrane
Eastern Klamath terrane—Divided into:
Trinity subterrane
Trinity subterrane
Contact
Fault
15 KILOMETERS

GEOLOGIC MAP OF THE RED BLUFF 30' x 60' QUADRANGLE, CALIFORNIA

By
M.C. Blake, Jr., D.S. Harwood, E.J. Helley, W.P. Irwin, A.S. Jayko, and D.L. Jones
1999