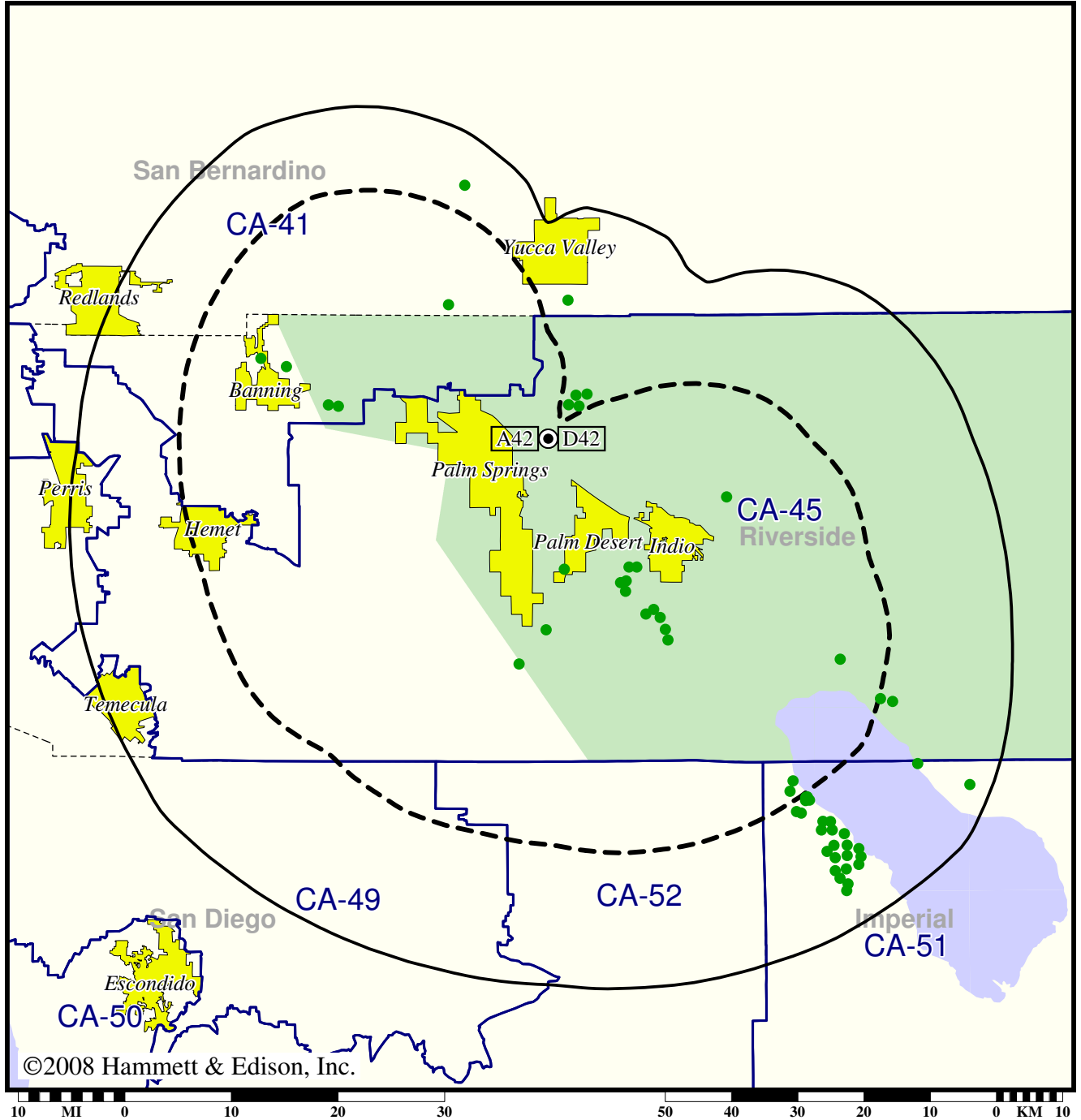


Station KESQ-TV • Analog Channel 42, DTV Channel 42 • Palm Springs, CA

Expected Change In Coverage: Granted Construction Permit

CP (solid): 100 kW ERP at 227 m HAAT, Network: ABC
vs. Analog (dashed): 316 kW ERP at 227 m HAAT, Network: ABC

Market: Palm Springs, CA



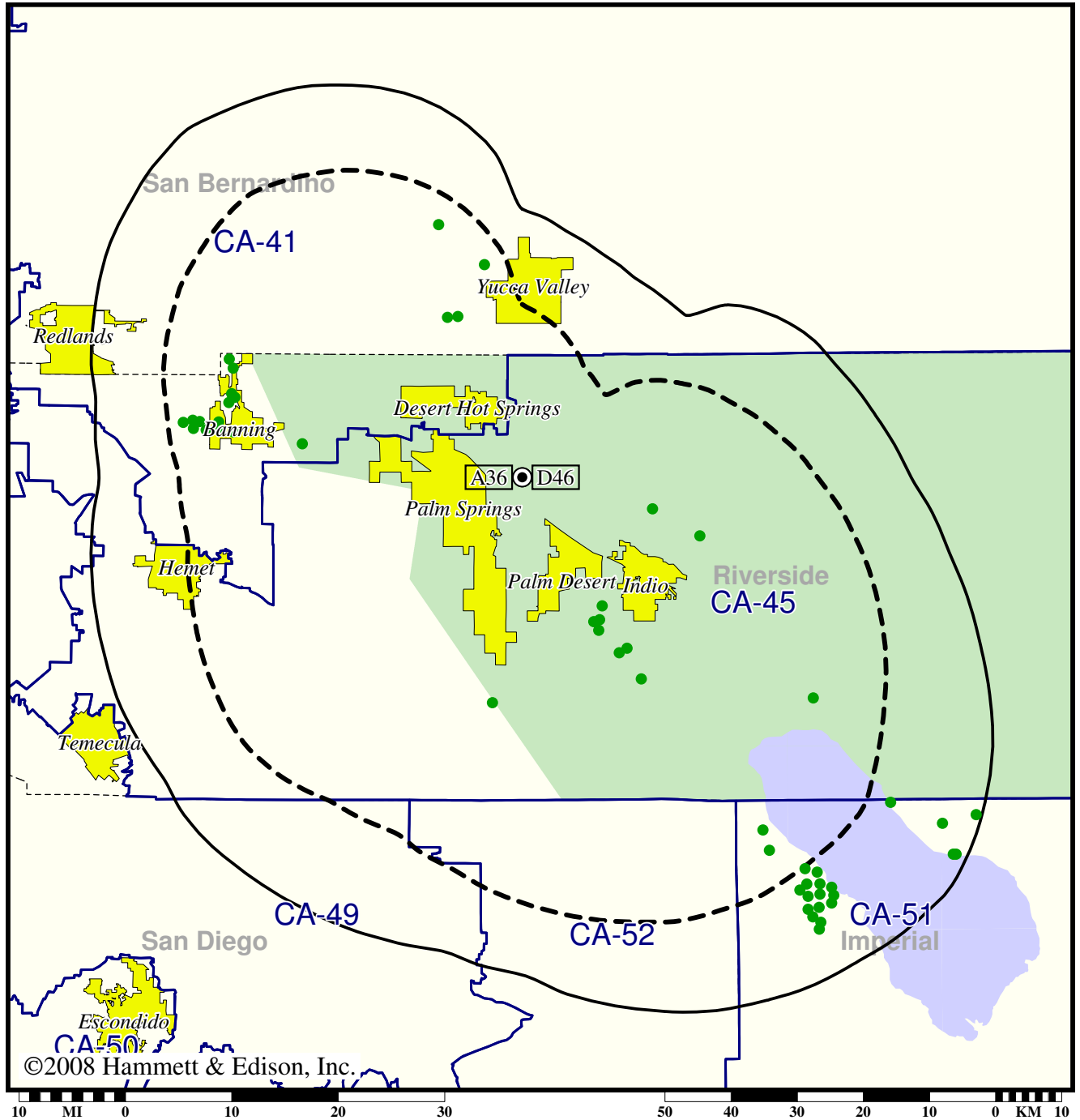
- Coverage gained after DTV transition
- (no symbol) No change in coverage

Station KMIR-TV • Analog Channel 36, DTV Channel 46 • Palm Springs, CA

Expected Change In Coverage: Granted Construction Permit

CP (solid): 120 kW ERP at 212 m HAAT, Network: NBC
vs. Analog (dashed): 490 kW ERP at 207 m HAAT, Network: NBC

Market: Palm Springs, CA



©2008 Hammett & Edison, Inc.

10 MI 0 10 20 30 40 50 60 70 80 90 100 KM 10

- Coverage gained after DTV transition
- (no symbol) No change in coverage