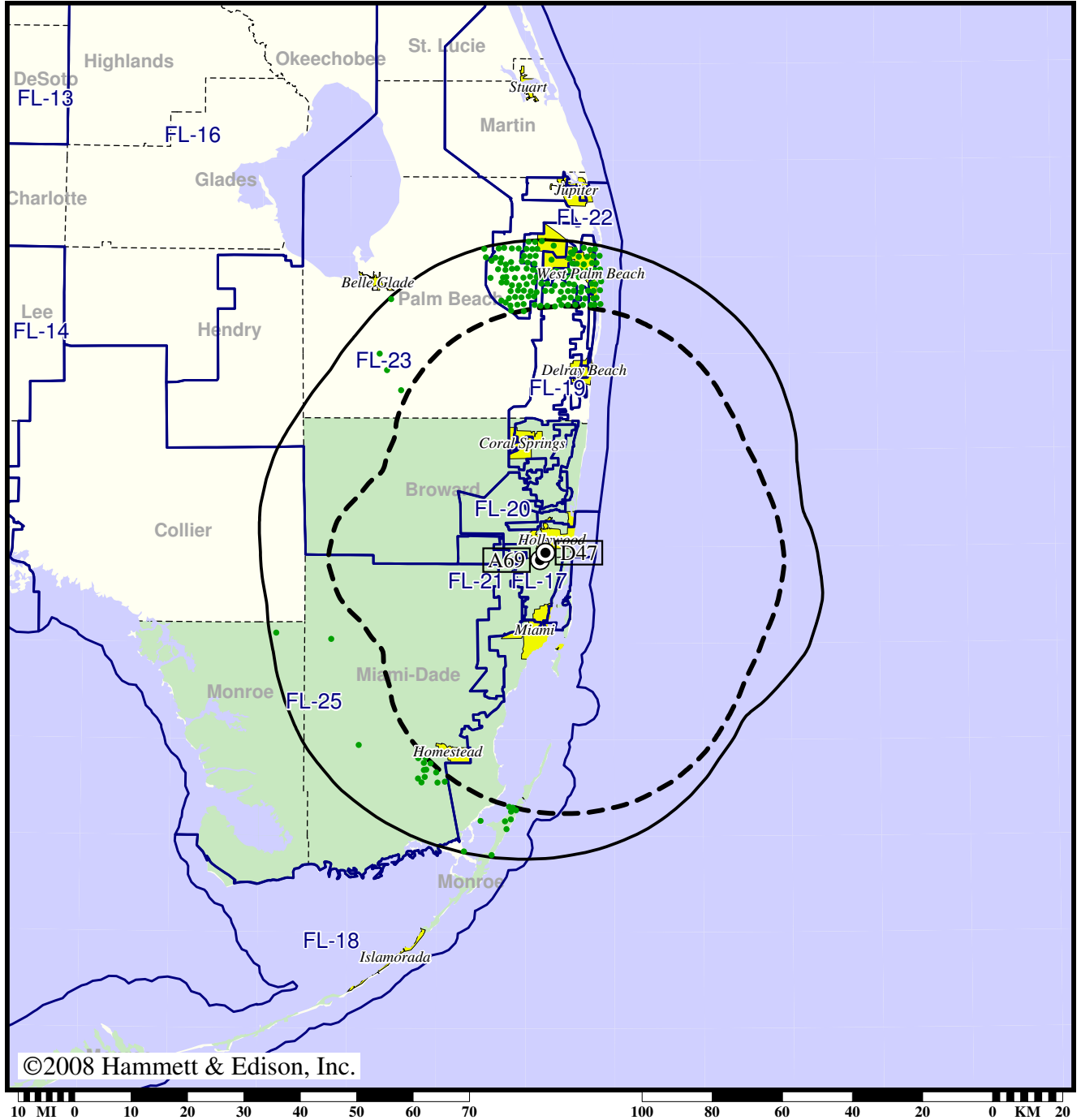


Station WAMI-TV • Analog Channel 69, DTV Channel 47 • Hollywood, FL

Expected Change In Coverage: Licensed Operation

Licensed (solid): 575 kW ERP at 297 m HAAT
vs. Analog (dashed): 5000 kW ERP at 264 m HAAT

Market: Miami-Ft. Lauderdale, FL



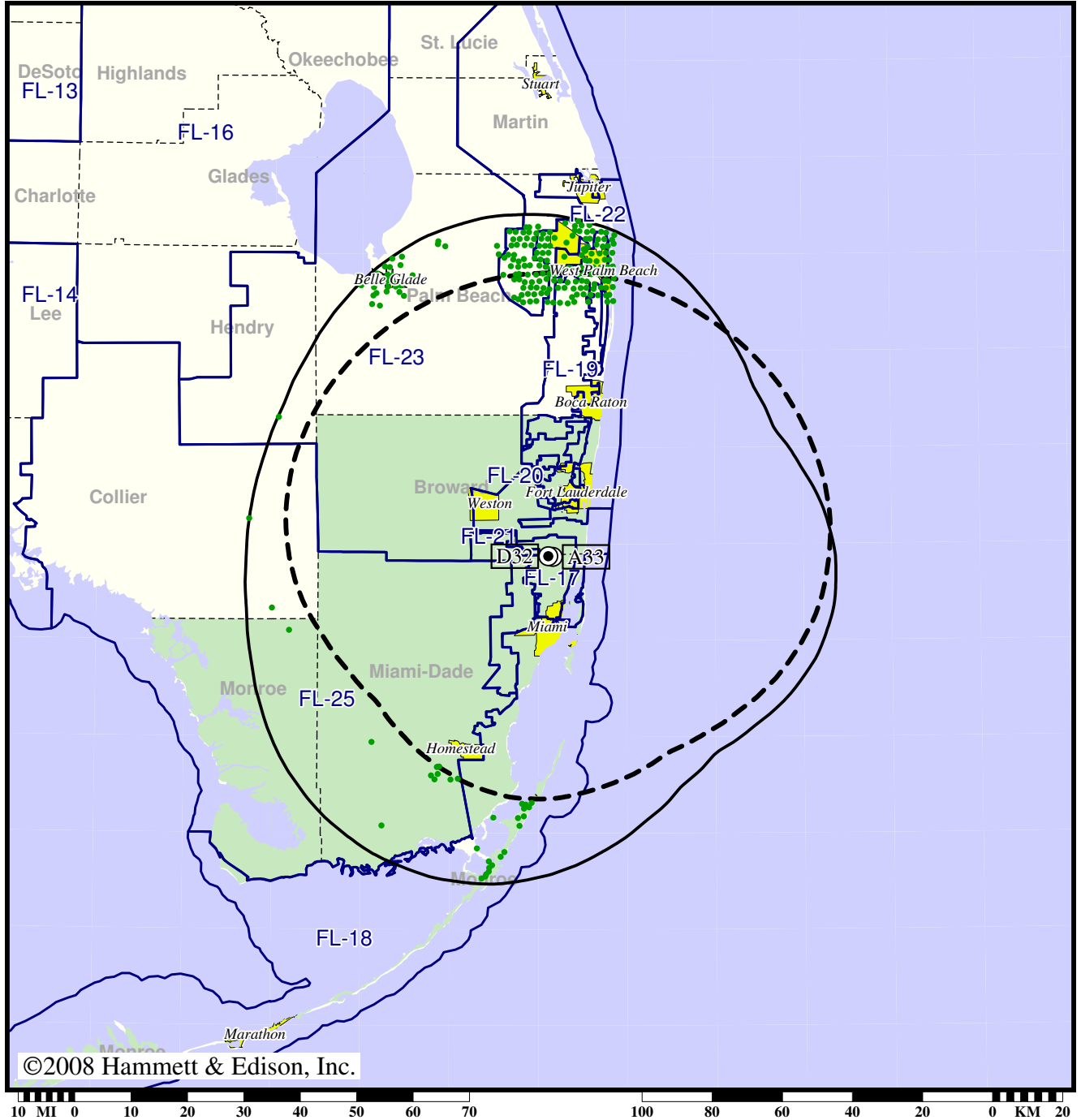
- Coverage gained after DTV transition
- (no symbol) No change in coverage

Station WBFS-TV • Analog Channel 33, DTV Channel 32 • Miami, FL

Expected Change In Coverage: Granted Construction Permit

CP (solid): 1000 kW ERP at 308 m HAAT
vs. Analog (dashed): 5000 kW ERP at 282 m HAAT

Market: Miami-Ft. Lauderdale, FL



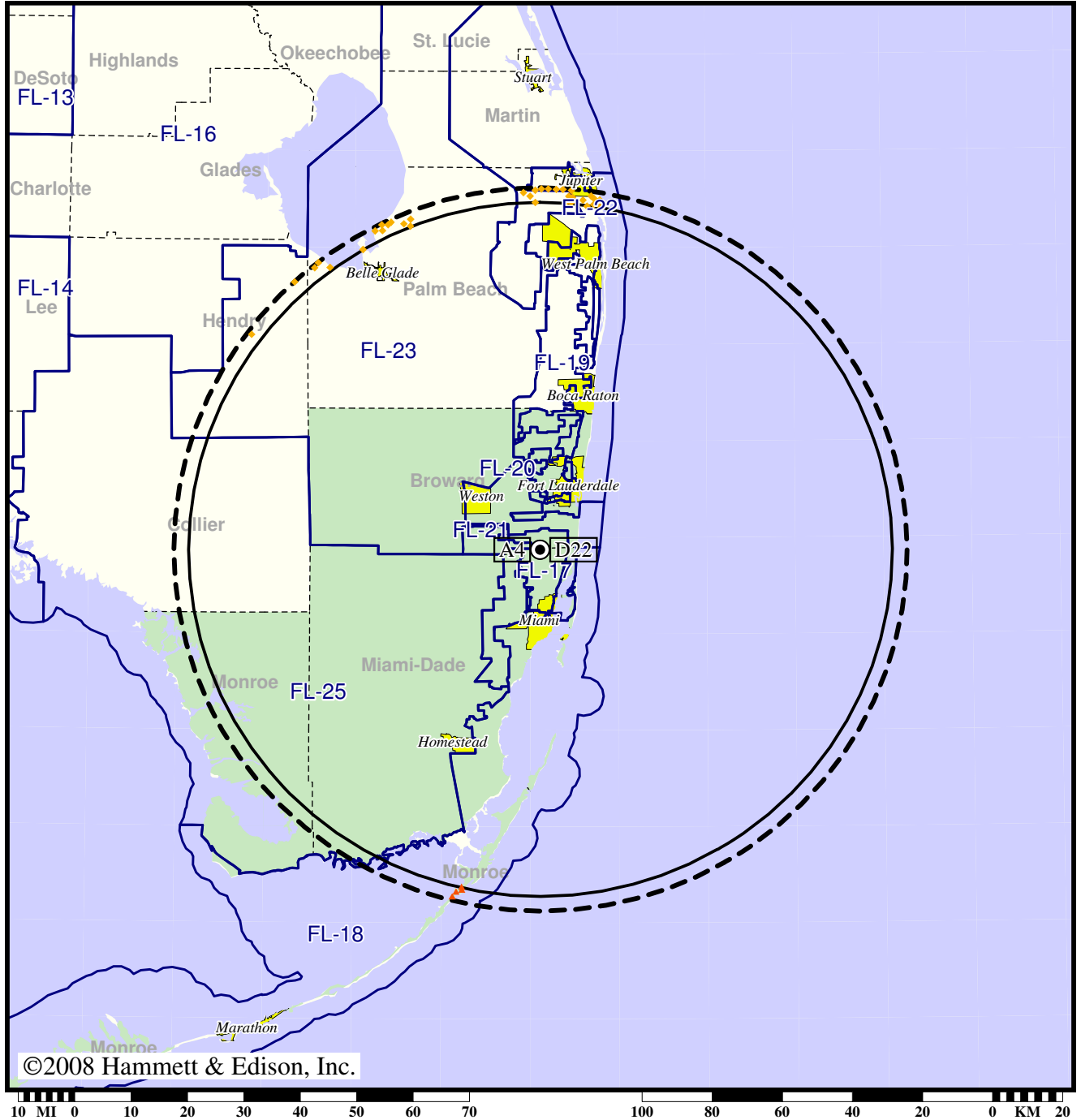
- Coverage gained after DTV transition
- (no symbol) No change in coverage

Station WFOR-TV • Analog Channel 4, DTV Channel 22 • Miami, FL

Expected Change In Coverage: Licensed Operation

Licensed (solid): 1000 kW ERP at 298 m HAAT, Network: CBS
vs. Analog (dashed): 100 kW ERP at 304 m HAAT, Network: CBS

Market: Miami-Ft. Lauderdale, FL



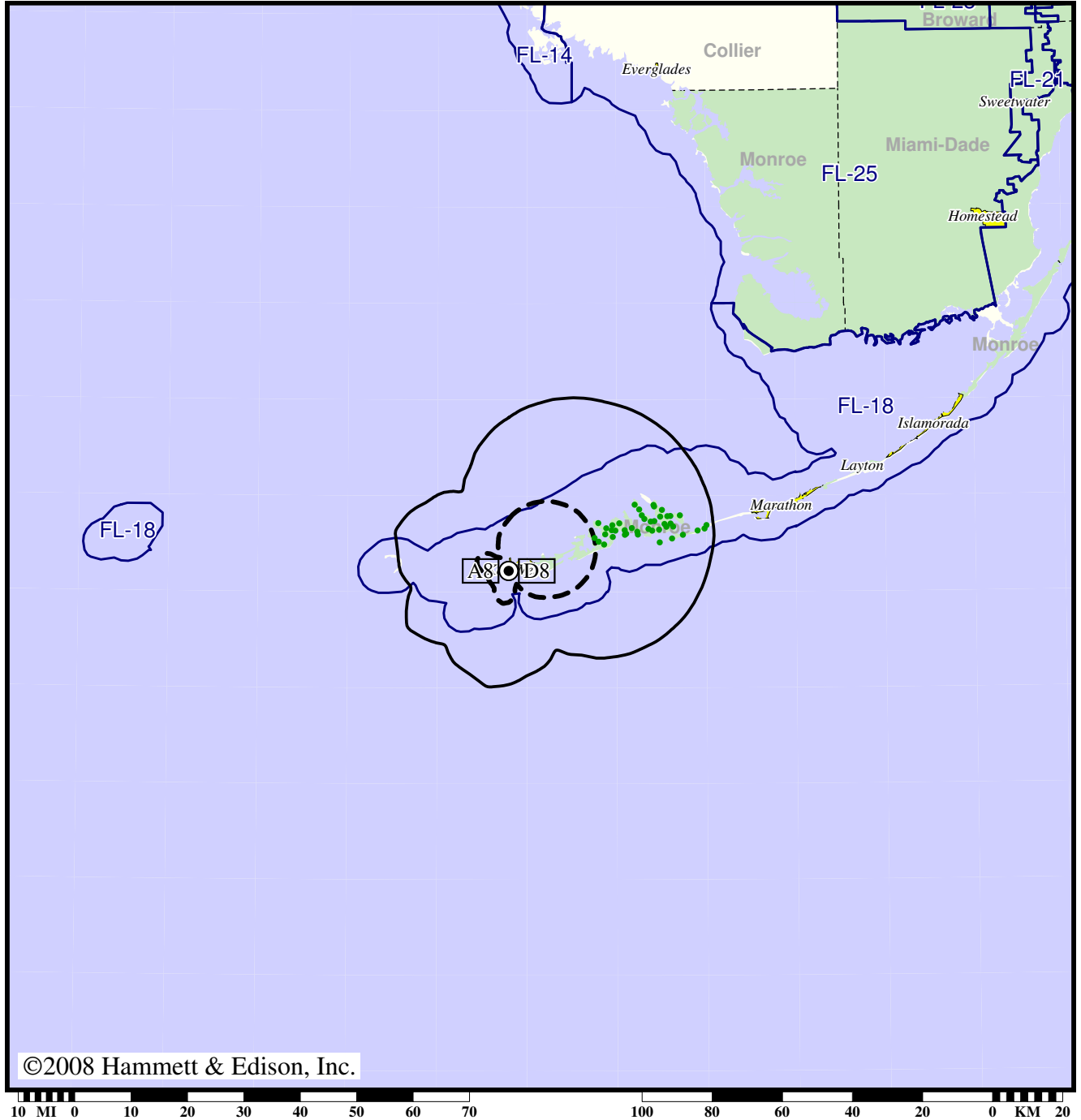
- (no symbol) No change in coverage
- ◆ Coverage lost but still served by same network
- ▲ Coverage lost and no other service by same network

Station WGEN-TV • Analog Channel 8, DTV Channel 8 • Key West, FL

Expected Change In Coverage: Granted Construction Permit

CP (solid): 7.00 kW ERP at 56 m HAAT
vs. Analog (dashed): 2.65 kW ERP at 55 m HAAT

Market: Miami-Ft. Lauderdale, FL



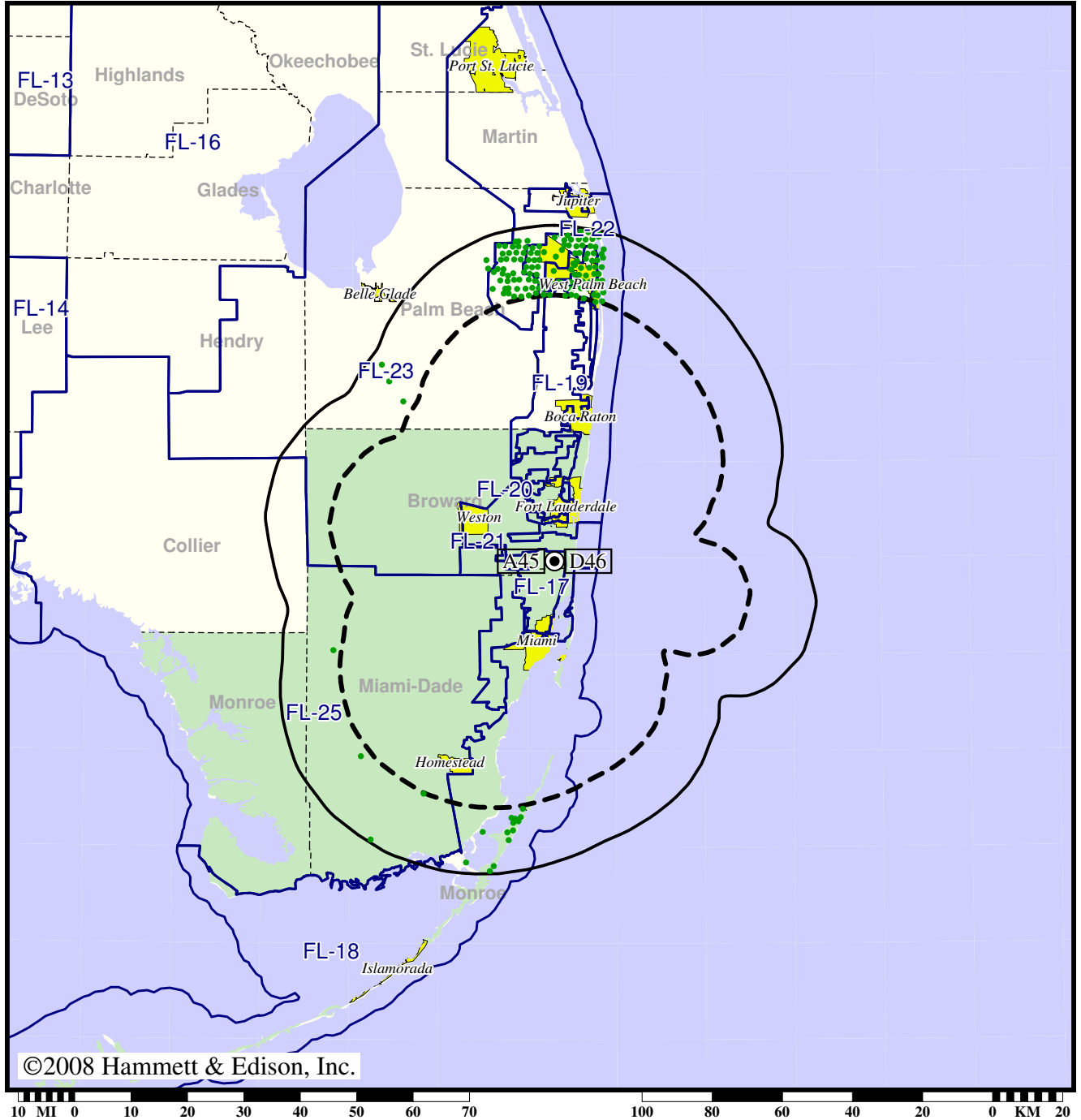
- Coverage gained after DTV transition
- (no symbol) No change in coverage

Station WHFT-TV • Analog Channel 45, DTV Channel 46 • Miami, FL

Expected Change In Coverage: Granted Construction Permit

CP (solid): 1000 kW ERP at 308 m HAAT
vs. Analog (dashed): 2570 kW ERP at 308 m HAAT

Market: Miami-Ft. Lauderdale, FL



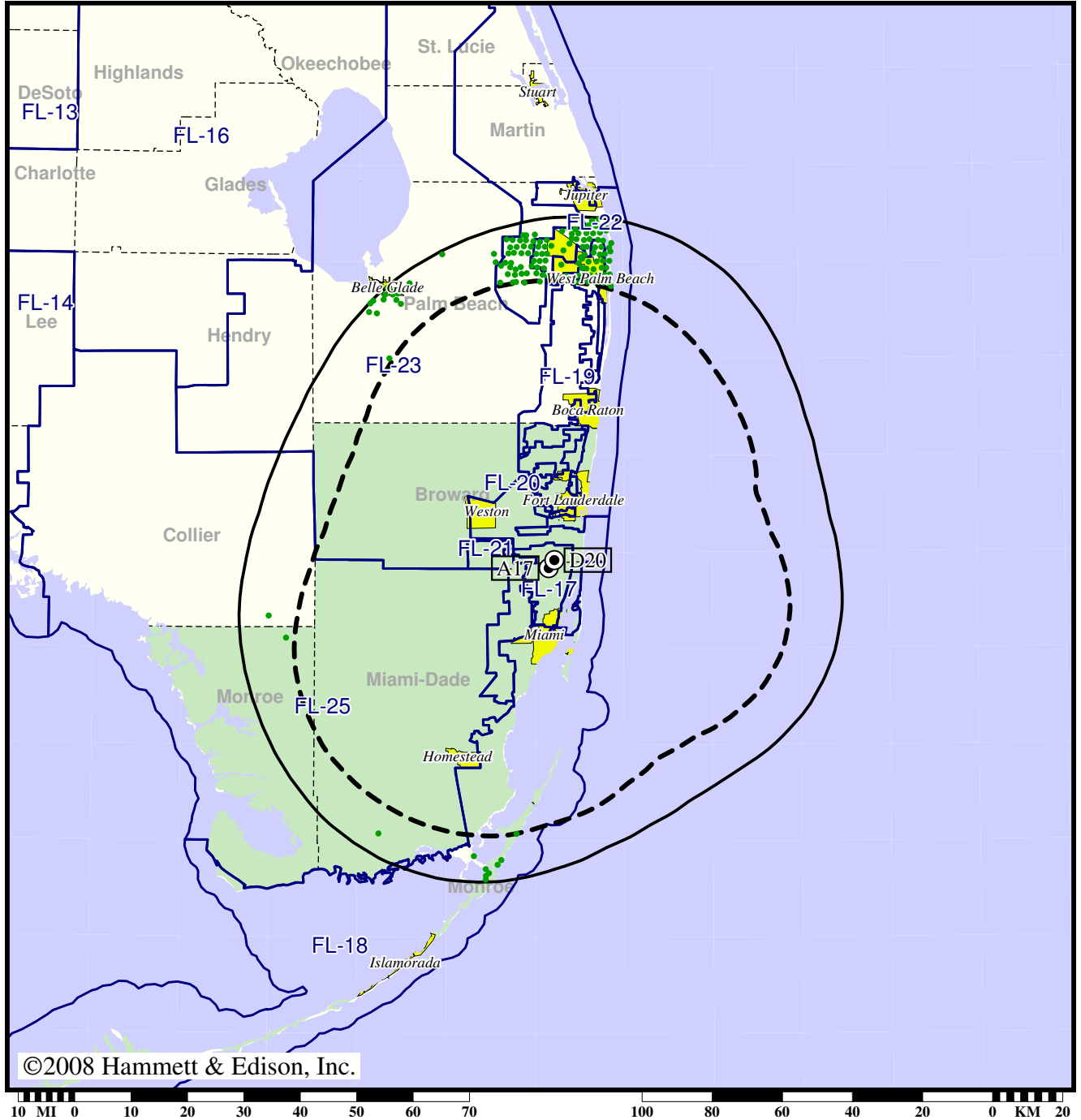
- Coverage gained after DTV transition
- (no symbol) No change in coverage

Station WLRN-TV • Analog Channel 17, DTV Channel 20 • Miami, FL

Expected Change In Coverage: Granted Construction Permit

CP (solid): 870 kW ERP at 301 m HAAT, Network: PBS
vs. Analog (dashed): 2820 kW ERP at 309 m HAAT, Network: PBS

Market: Miami-Ft. Lauderdale, FL



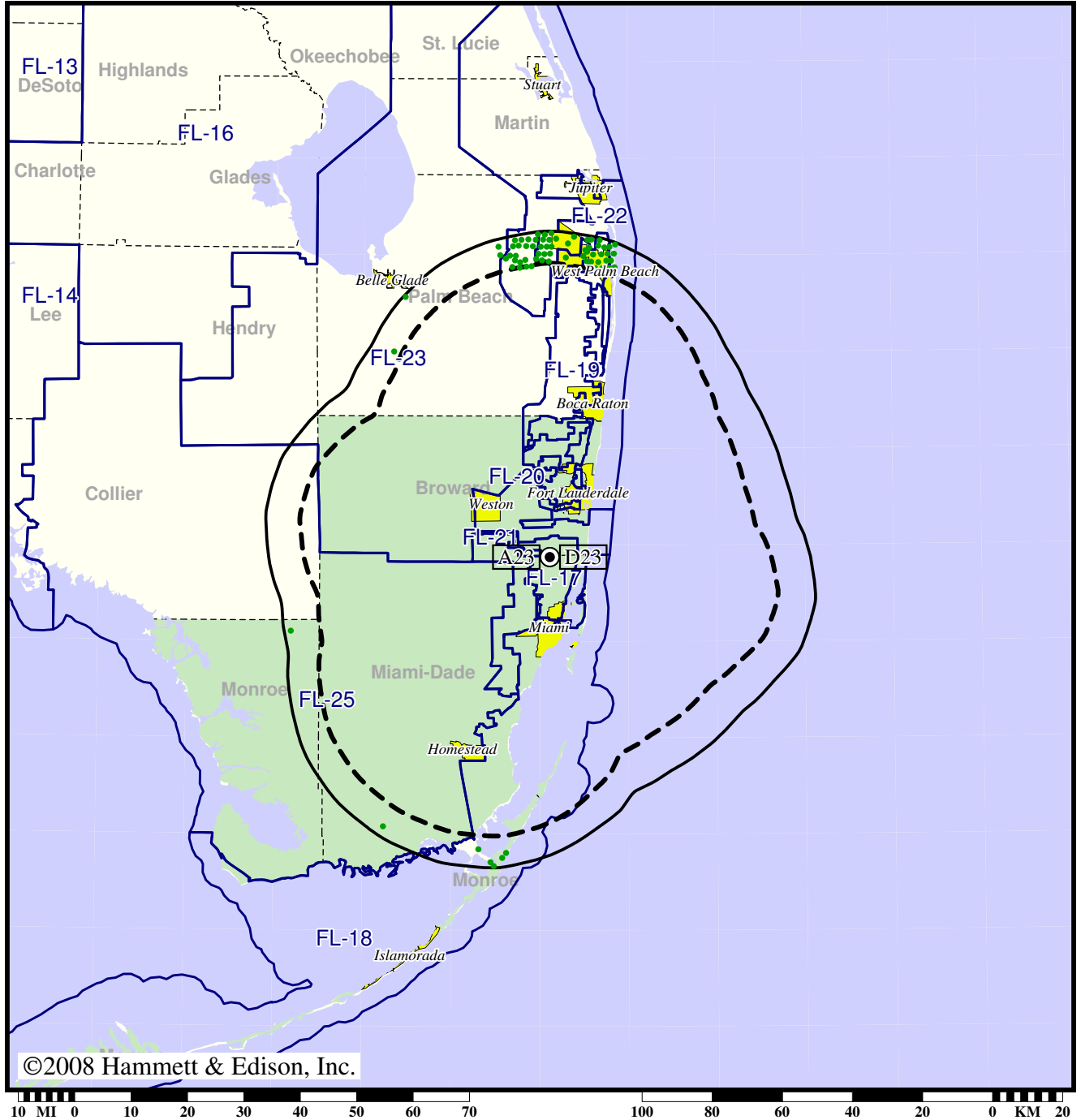
- Coverage gained after DTV transition
- (no symbol) No change in coverage

TV Station WLTV • Analog Channel 23, DTV Channel 23 • Miami, FL

Expected Change In Coverage: Granted Construction Permit

CP (solid): 535 kW ERP at 297 m HAAT
vs. Analog (dashed): 4470 kW ERP at 297 m HAAT

Market: Miami-Ft. Lauderdale, FL



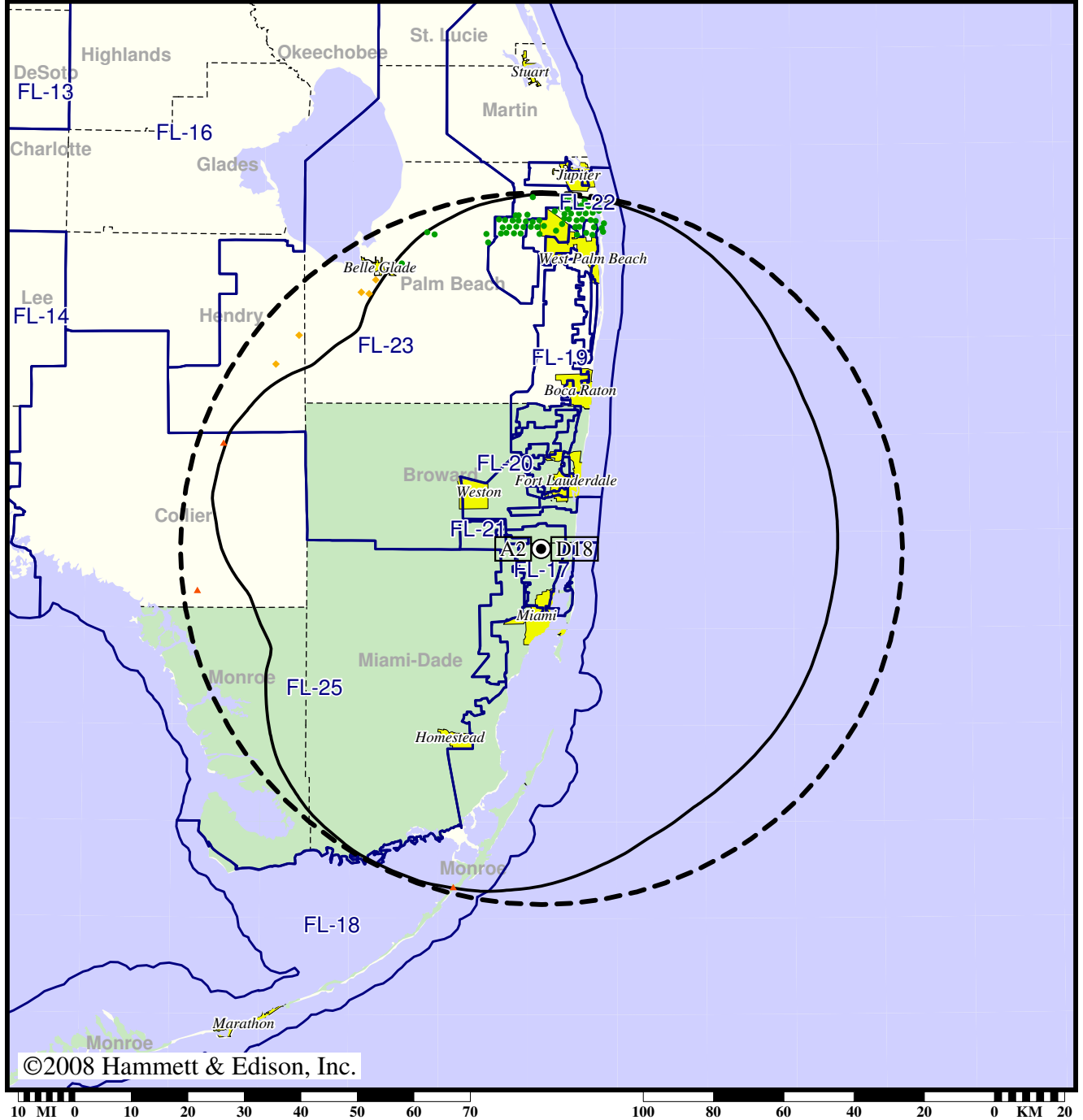
- Coverage gained after DTV transition
- (no symbol) No change in coverage

TV Station WPBT • Analog Channel 2, DTV Channel 18 • Miami, FL

Expected Change In Coverage: Licensed Operation

Licensed (solid): 1000 kW ERP at 309 m HAAT, Network: PBS
vs. Analog (dashed): 100 kW ERP at 283 m HAAT, Network: PBS

Market: Miami-Ft. Lauderdale, FL



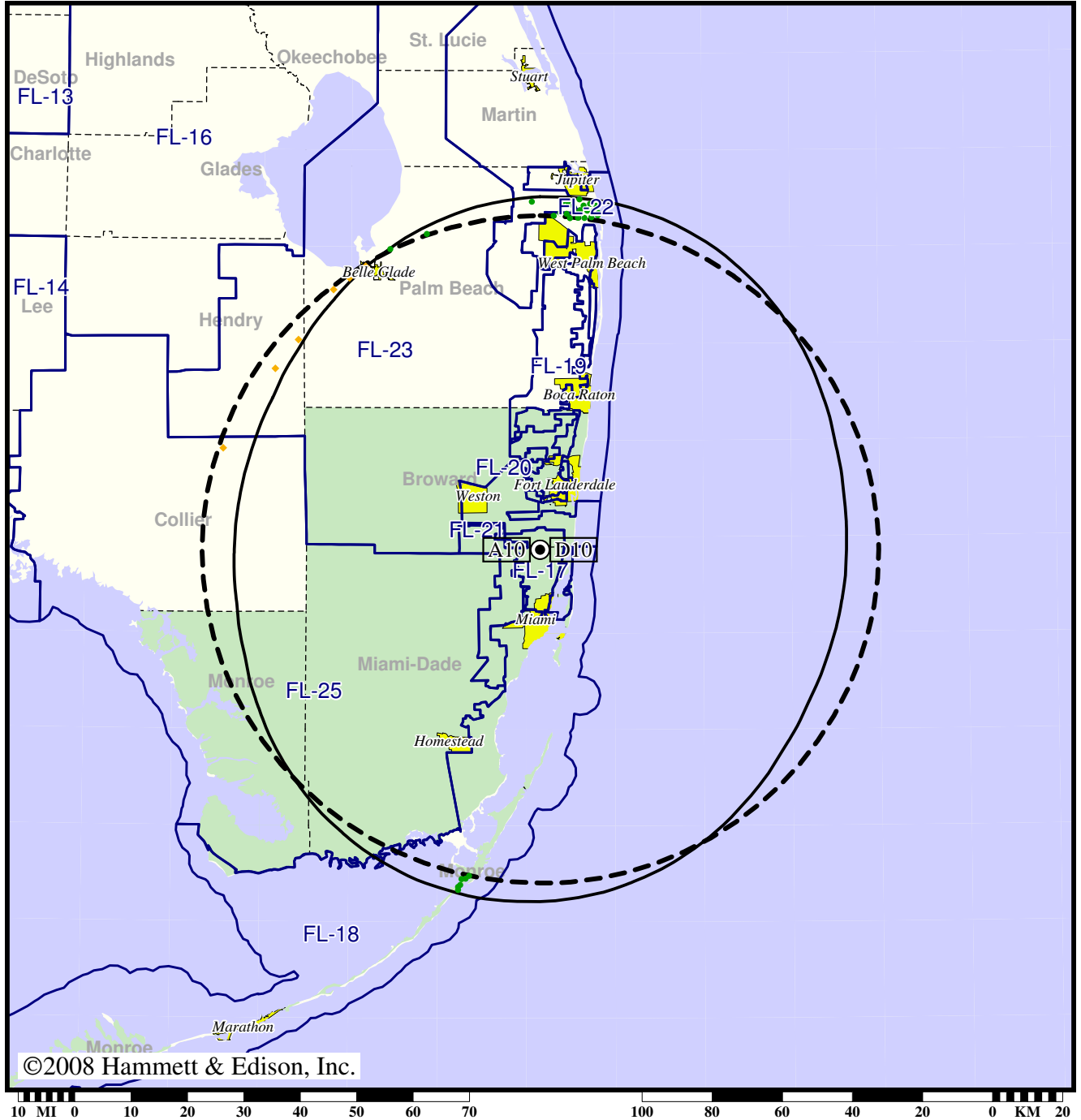
- Coverage gained after DTV transition
- (no symbol) No change in coverage
- ◆ Coverage lost but still served by same network
- ▲ Coverage lost and no other service by same network

TV Station WPLG • Analog Channel 10, DTV Channel 10 • Miami, FL

Expected Change In Coverage: Granted Construction Permit

CP (solid): 30.0 kW ERP at 309 m HAAT, Network: ABC
vs. Analog (dashed): 316 kW ERP at 307 m HAAT, Network: ABC

Market: Miami-Ft. Lauderdale, FL



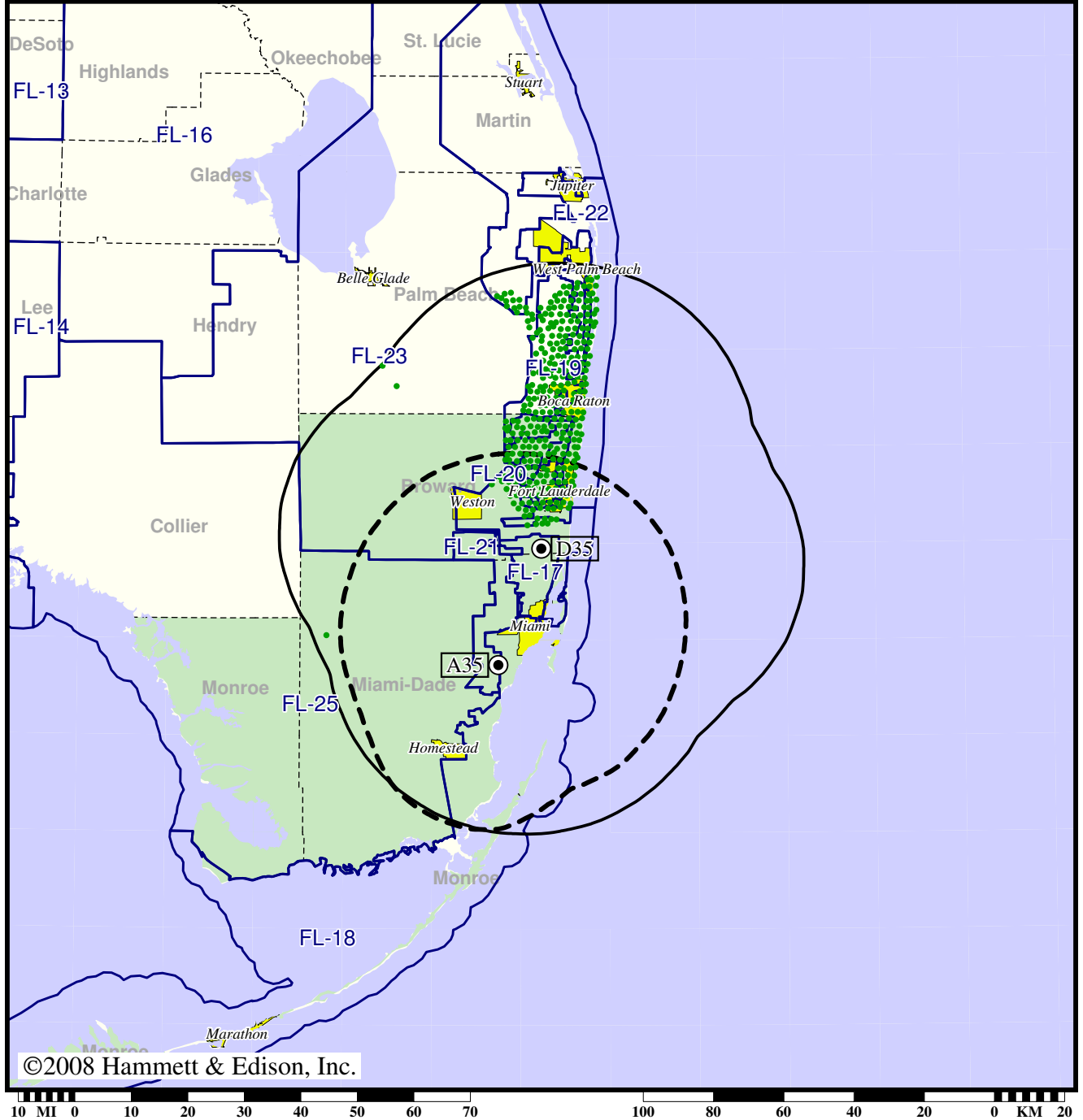
- Coverage gained after DTV transition
- (no symbol) No change in coverage
- ◆ Coverage lost but still served by same network

TV Station WPXM • Analog Channel 35, DTV Channel 35 • Miami, FL

Expected Change In Coverage: Granted Construction Permit

CP (solid): 242 kW ERP at 282 m HAAT
vs. Analog (dashed): 3240 kW ERP at 102 m HAAT

Market: Miami-Ft. Lauderdale, FL



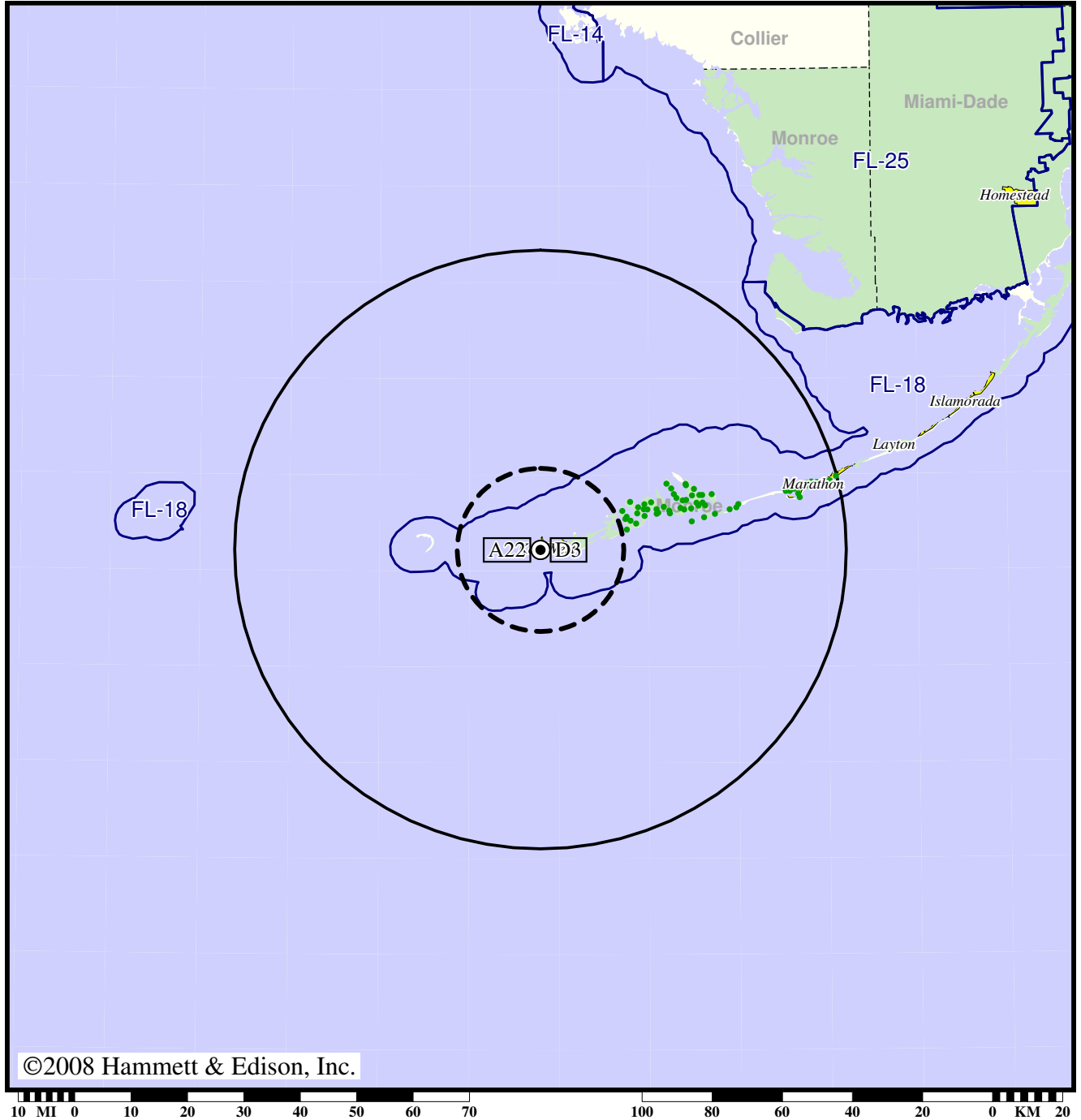
- Coverage gained after DTV transition
- (no symbol) No change in coverage

Station WSBS-TV • Analog Channel 22, DTV Channel 3 • Key West, FL

Expected Change In Coverage: Granted Construction Permit

CP (solid): 45.0 kW ERP at 54 m HAAT
vs. Analog (dashed): 11.2 kW ERP at 62 m HAAT

Market: Miami-Ft. Lauderdale, FL



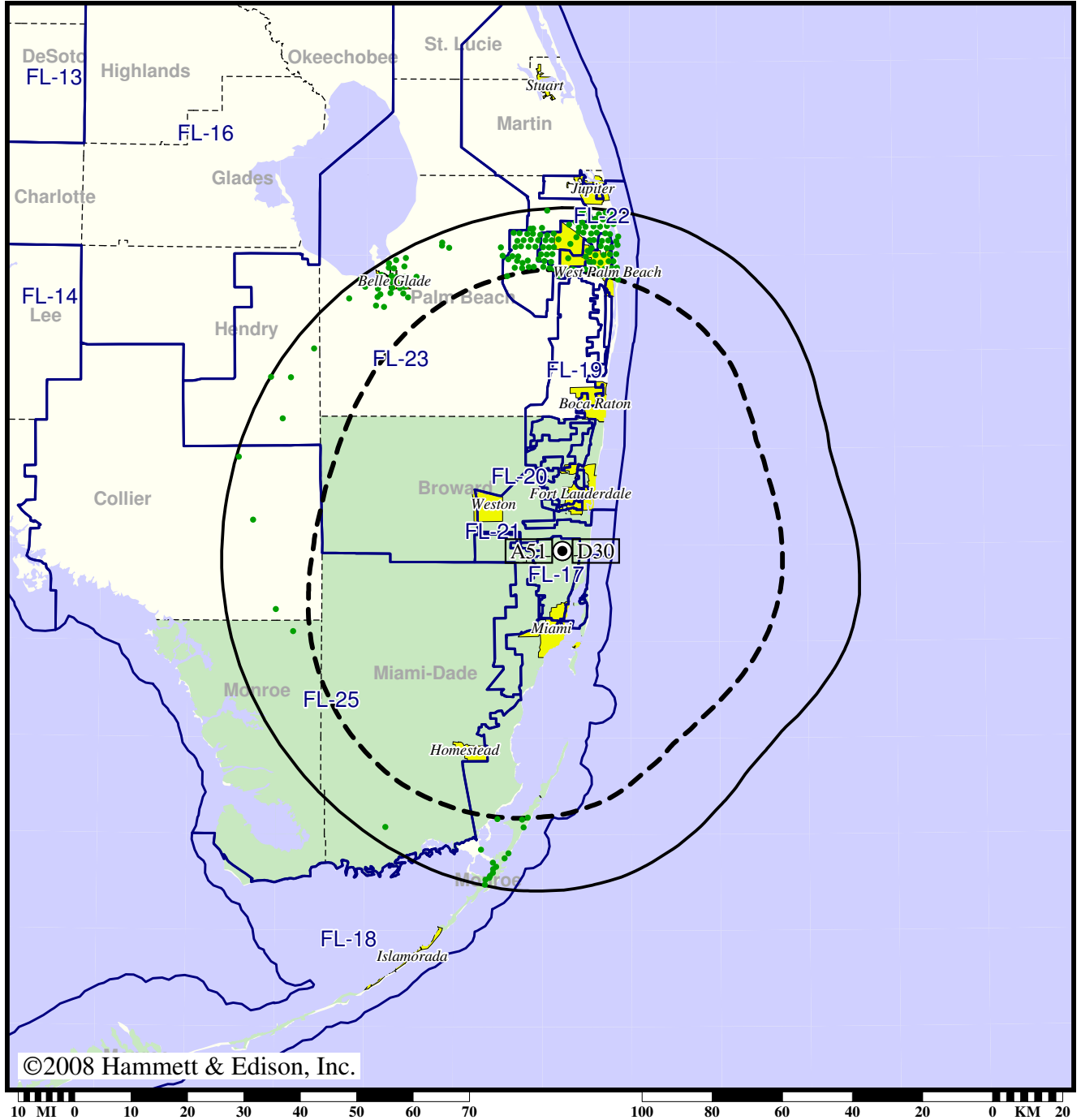
- Coverage gained after DTV transition
- (no symbol) No change in coverage

TV Station WSCV • Analog Channel 51, DTV Channel 30 • Fort Lauderdale, FL

Expected Change In Coverage: Granted Construction Permit

CP (solid): 1000 kW ERP at 304 m HAAT
vs. Analog (dashed): 5000 kW ERP at 304 m HAAT

Market: Miami-Ft. Lauderdale, FL



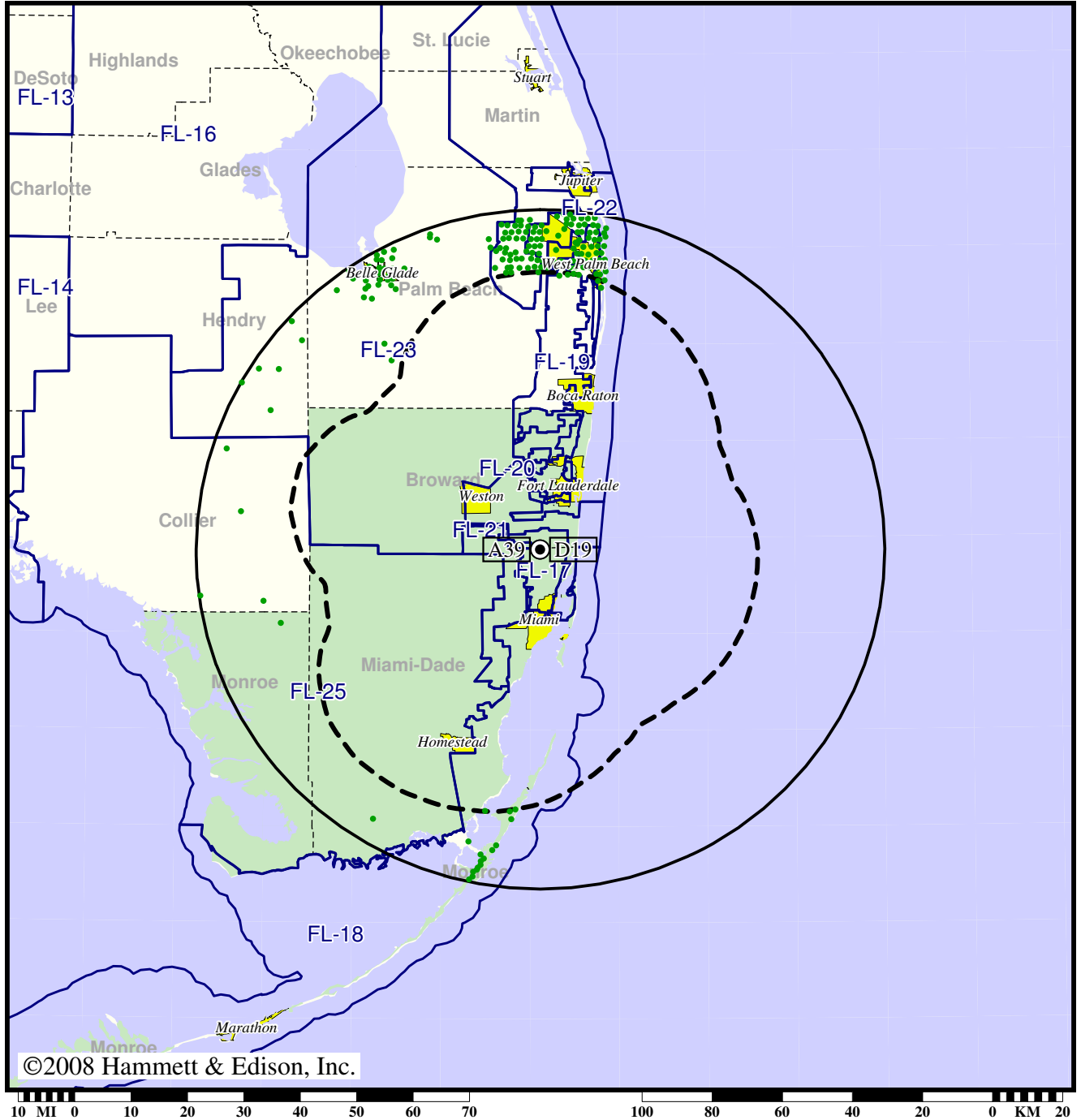
- Coverage gained after DTV transition
- (no symbol) No change in coverage

Station WSFL-TV • Analog Channel 39, DTV Channel 19 • Miami, FL

Expected Change In Coverage: Granted Construction Permit

CP (solid): 1000 kW ERP at 276 m HAAT
vs. Analog (dashed): 5000 kW ERP at 276 m HAAT

Market: Miami-Ft. Lauderdale, FL



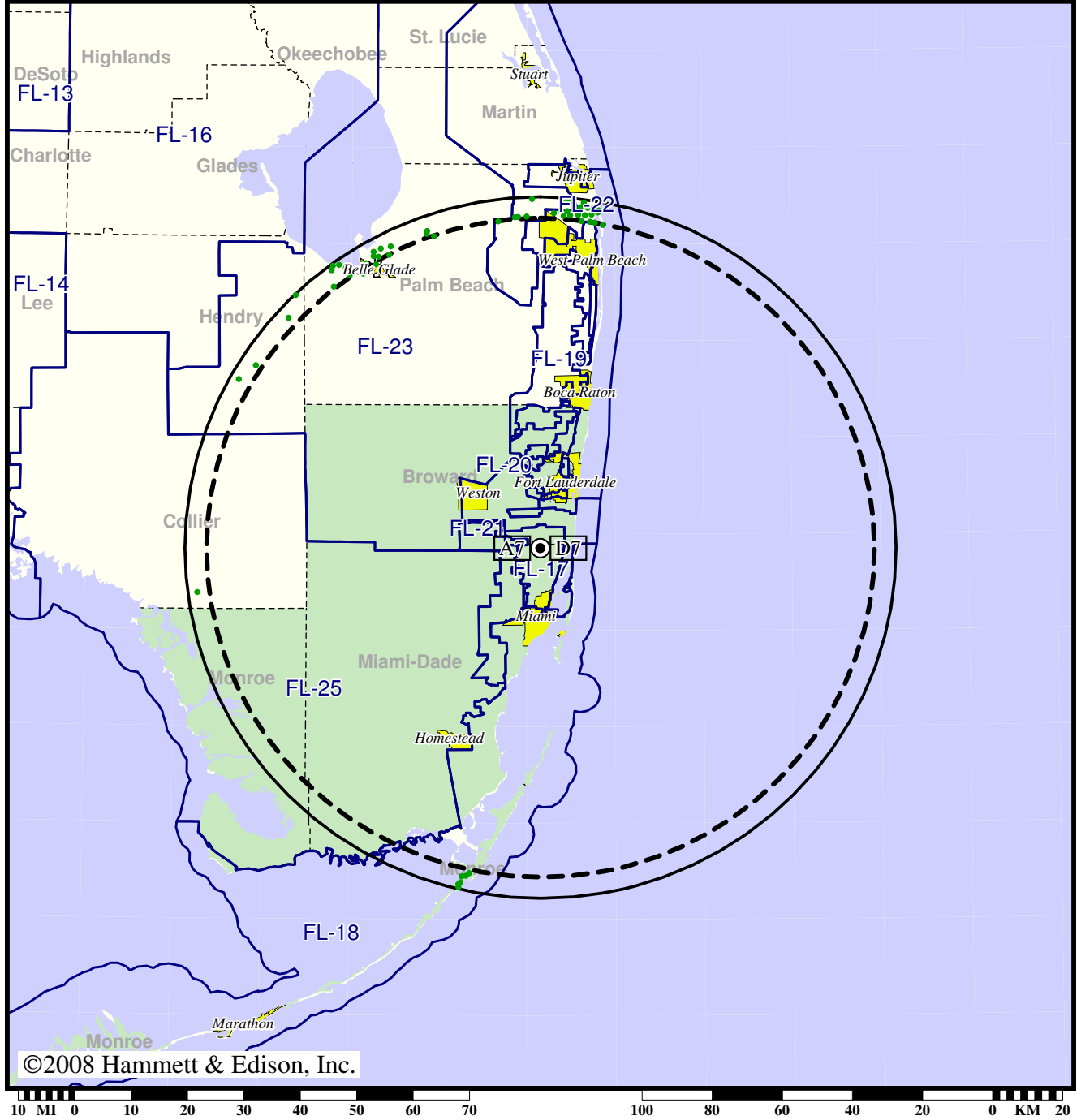
- Coverage gained after DTV transition
- (no symbol) No change in coverage

TV Station WSVN • Analog Channel 7, DTV Channel 7 • Miami, FL

Expected Change In Coverage: Granted Construction Permit

CP (solid): 31.0 kW ERP at 293 m HAAT, Network: Fox
vs. Analog (dashed): 316 kW ERP at 293 m HAAT, Network: Fox

Market: Miami-Ft. Lauderdale, FL



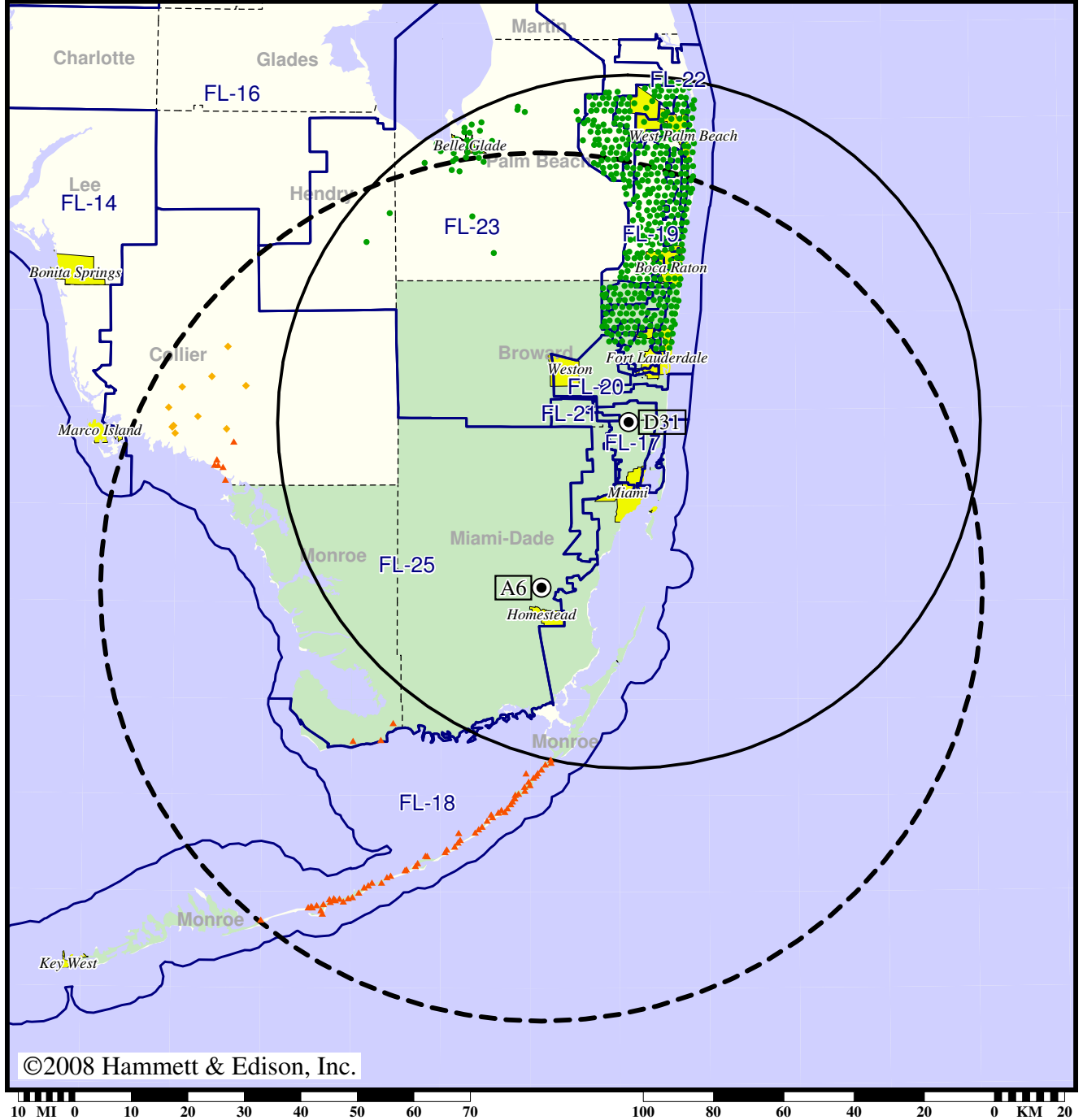
- Coverage gained after DTV transition
- (no symbol) No change in coverage

TV Station WTVJ • Analog Channel 6, DTV Channel 31 • Miami, FL

Expected Change In Coverage: Licensed Operation

Licensed (solid): 1000 kW ERP at 311 m HAAT, Network: NBC
vs. Analog (dashed): 100 kW ERP at 549 m HAAT, Network: NBC

Market: Miami-Ft. Lauderdale, FL



- Coverage gained after DTV transition
- (no symbol) No change in coverage
- ◆ Coverage lost but still served by same network
- ▲ Coverage lost and no other service by same network