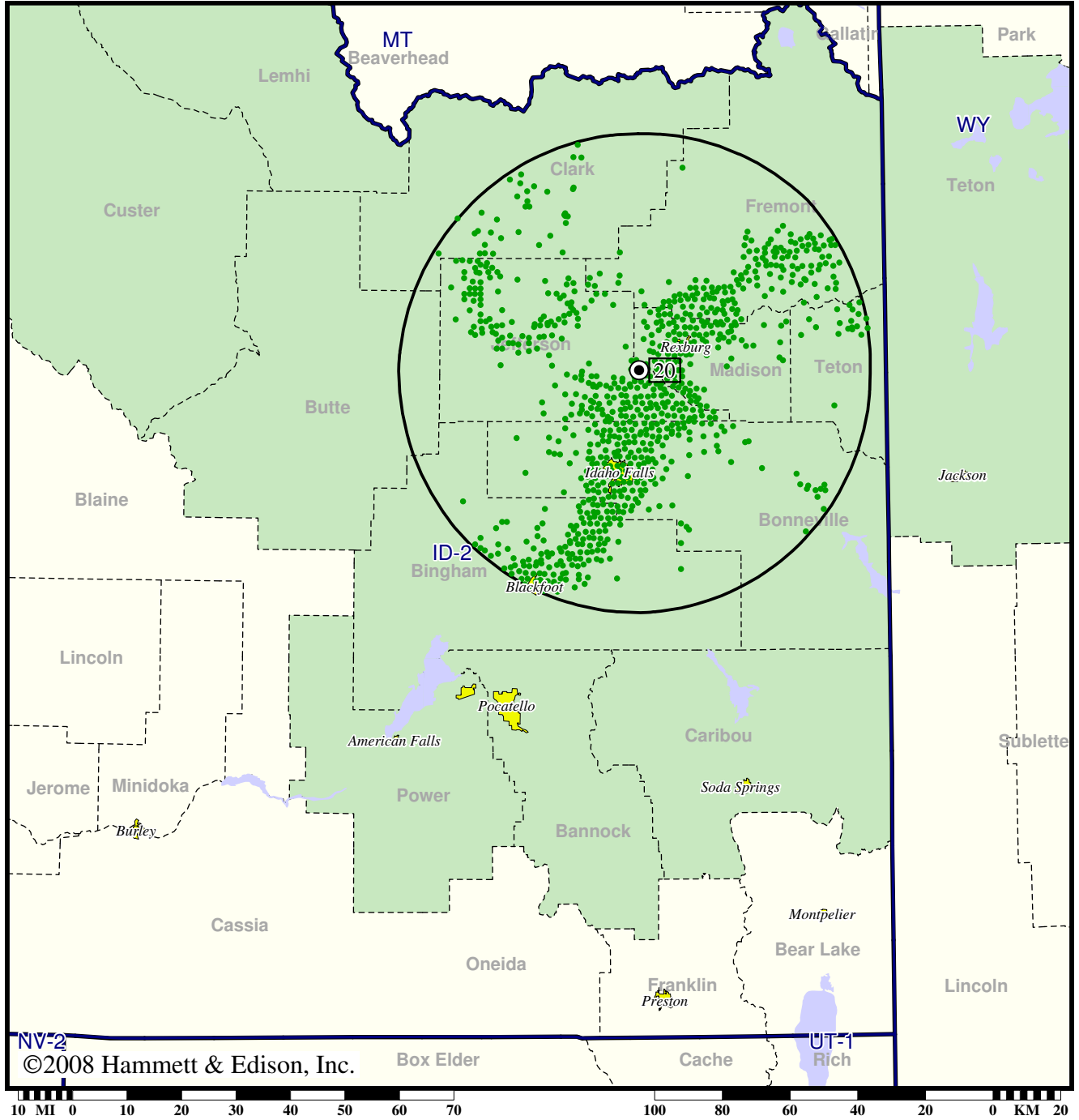


New DTV Station • Channel 20 • Idaho Falls, ID

Expected Change In Coverage: Post-Transition Appendix B Facility

Appendix B (solid): 50.0 kW ERP at 223 m HAAT

Market: Idaho Falls-Pocatello, ID



©2008 Hammett & Edison, Inc.

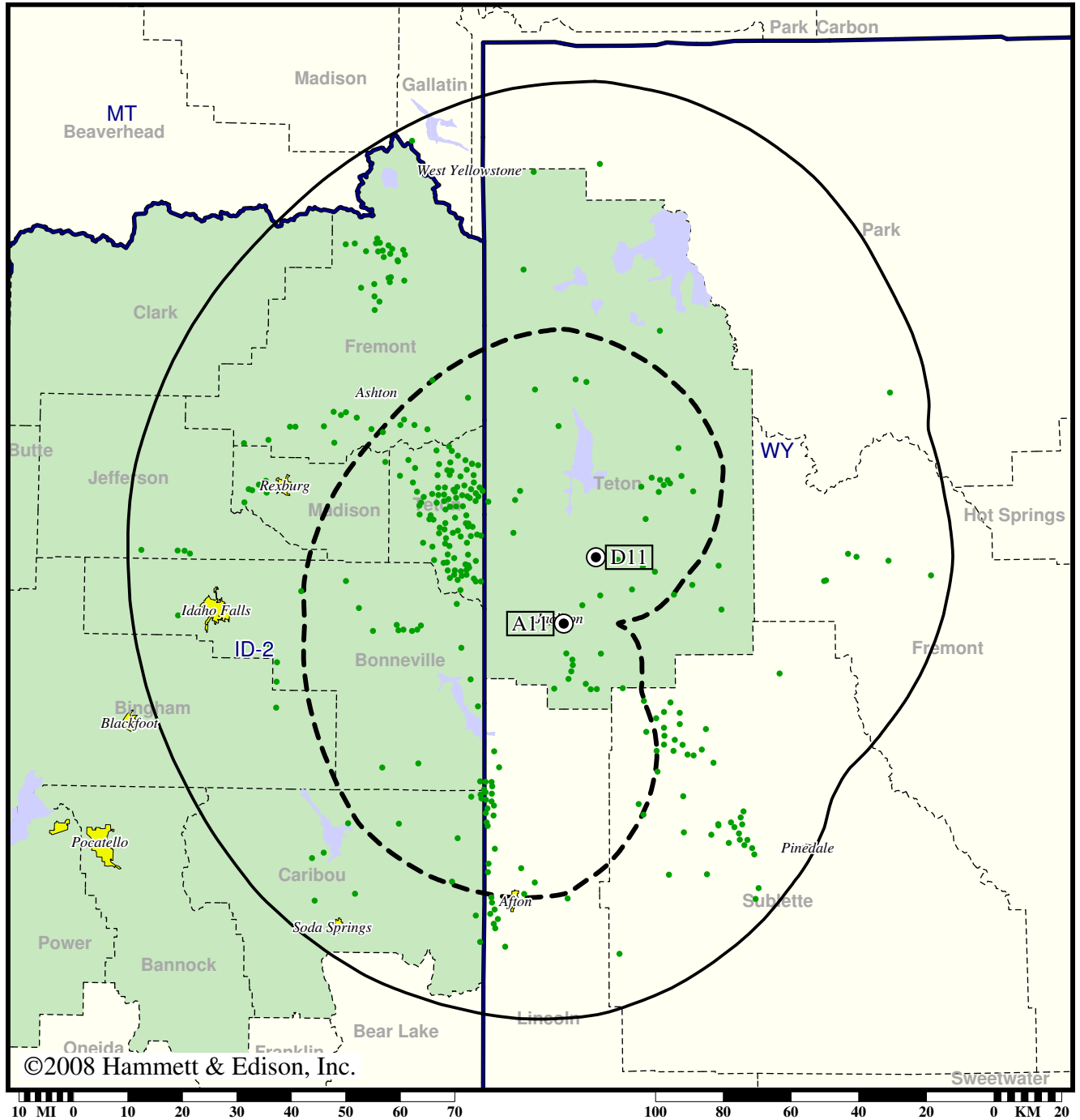
- Coverage gained after DTV transition
- (no symbol) No change in coverage

TV Station KBEO • Analog Channel 11, DTV Channel 11 • Jackson, WY

Expected Change In Coverage: Granted Construction Permit

CP (solid): 30.0 kW ERP at 603 m HAAT  
vs. Analog (dashed): 21.9 kW ERP at 327 m HAAT

Market: Idaho Falls-Pocatello, ID



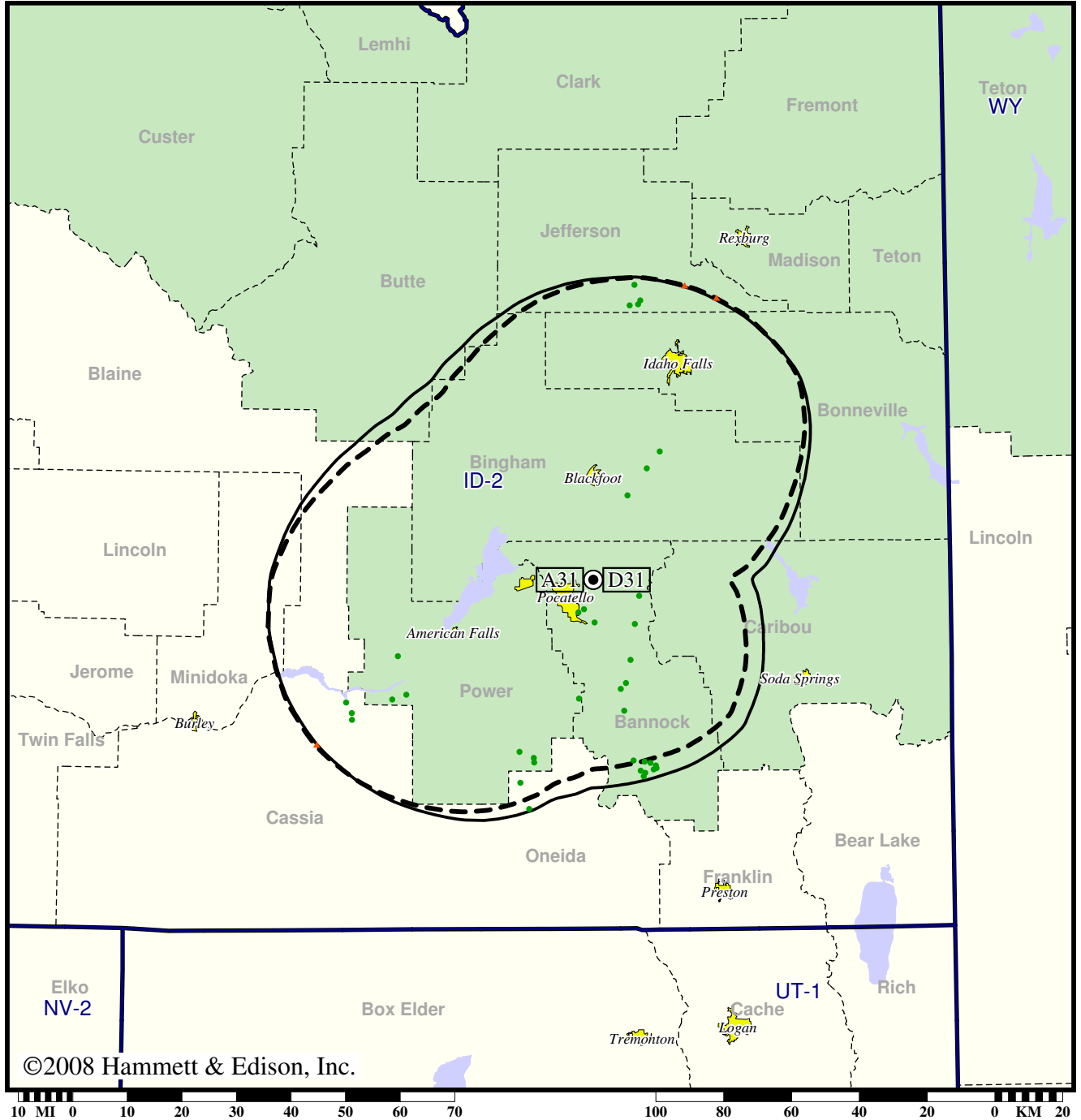
- Coverage gained after DTV transition
- (no symbol) No change in coverage

TV Station KFXP • Analog Channel 31, DTV Channel 31 • Pocatello, ID

Expected Change In Coverage: Granted Construction Permit

CP (solid): 68.5 kW ERP at 447 m HAAT, Network: Fox  
vs. Analog (dashed): 2140 kW ERP at 447 m HAAT, Network: Fox

Market: Idaho Falls-Pocatello, ID



©2008 Hammett & Edison, Inc.

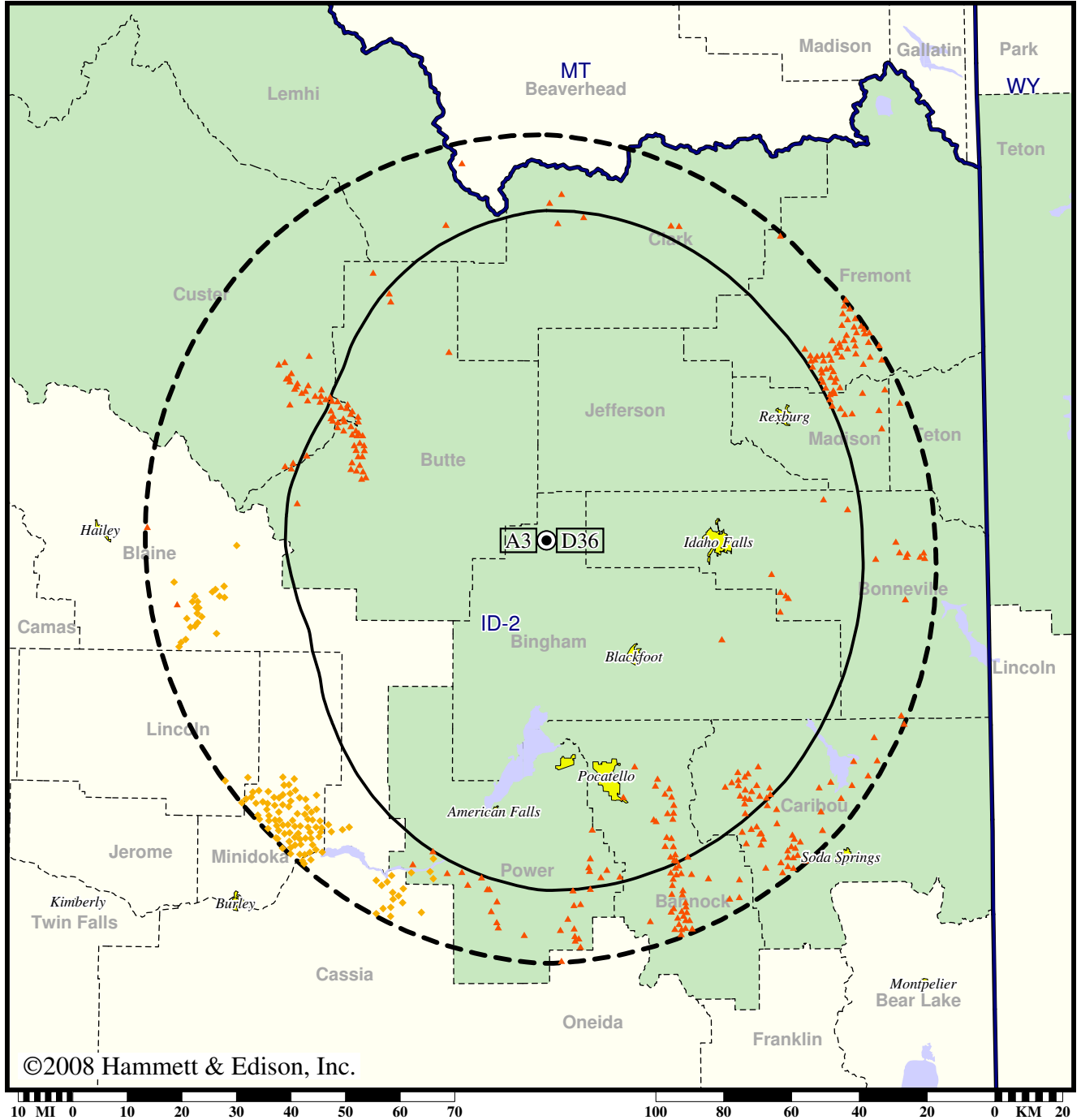
- Coverage gained after DTV transition
- (no symbol) No change in coverage
- ▲ Coverage lost after DTV transition

TV Station KIDK • Analog Channel 3, DTV Channel 36 • Idaho Falls, ID

Expected Change In Coverage: Granted Construction Permit

CP (solid): 200 kW ERP at 489 m HAAT, Network: CBS  
vs. Analog (dashed): 100 kW ERP at 488 m HAAT, Network: CBS

Market: Idaho Falls-Pocatello, ID



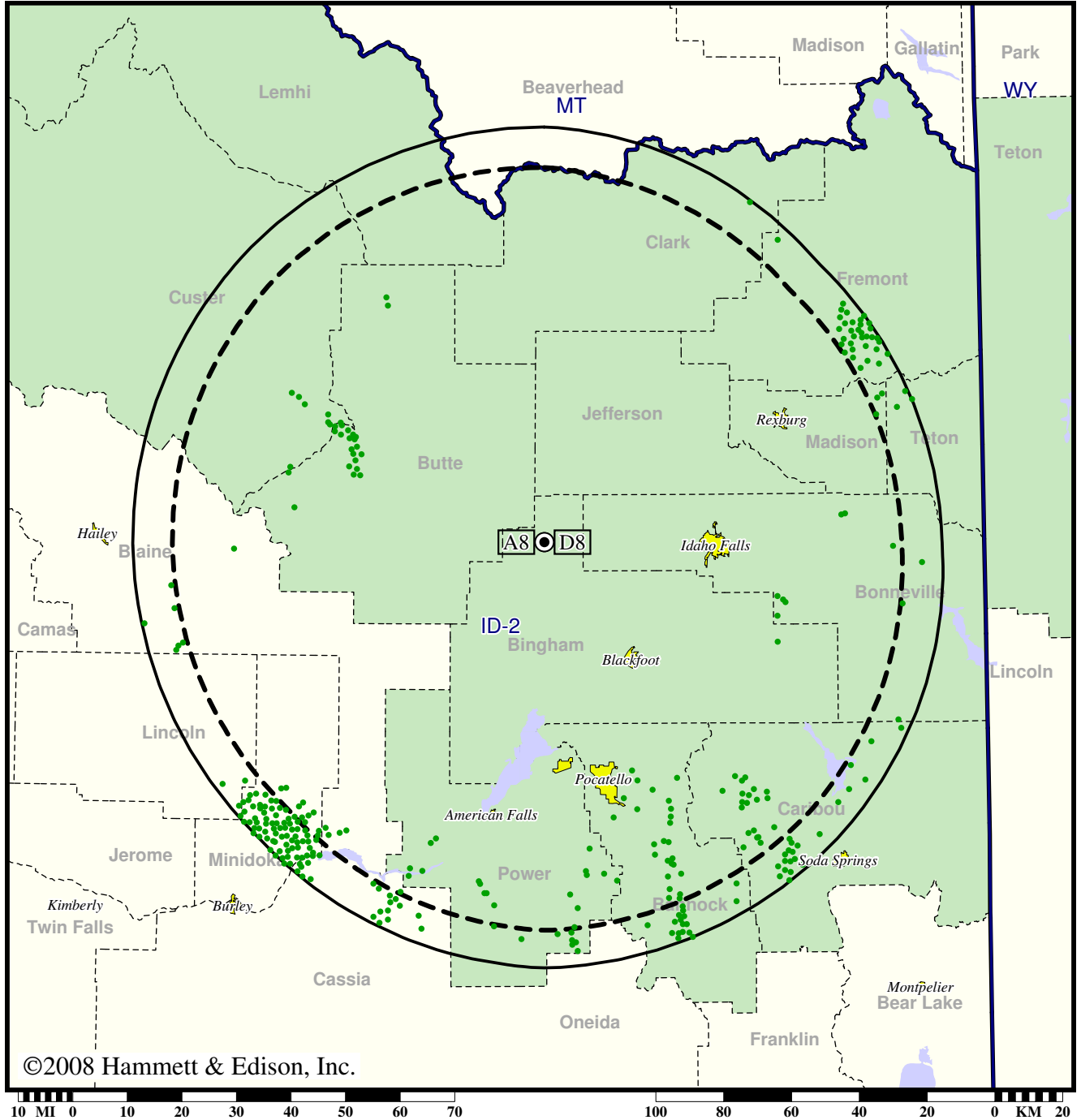
- (no symbol) No change in coverage
- ◆ Coverage lost but still served by same network
- ▲ Coverage lost and no other service by same network

Station KIFI-TV • Analog Channel 8, DTV Channel 8 • Idaho Falls, ID

Expected Change In Coverage: Granted Construction Permit

CP (solid): 63.0 kW ERP at 464 m HAAT, Network: ABC  
vs. Analog (dashed): 316 kW ERP at 464 m HAAT, Network: ABC

Market: Idaho Falls-Pocatello, ID



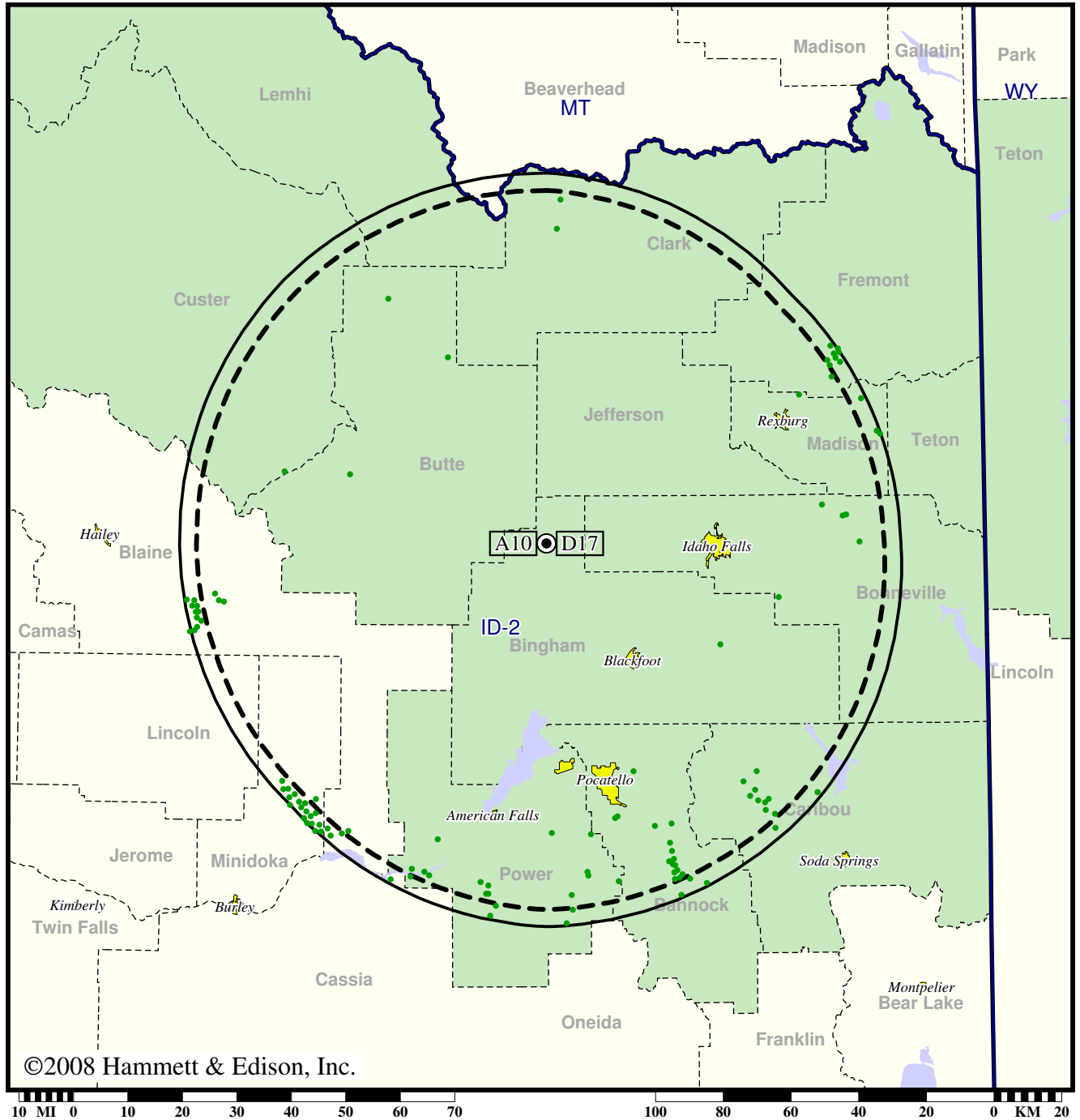
- Coverage gained after DTV transition
- (no symbol) No change in coverage

Station KISU-TV • Analog Channel 10, DTV Channel 17 • Pocatello, ID

Expected Change In Coverage: Granted Construction Permit

CP (solid): 378 kW ERP at 445 m HAAT, Network: PBS  
vs. Analog (dashed): 123 kW ERP at 465 m HAAT, Network: PBS

Market: Idaho Falls-Pocatello, ID



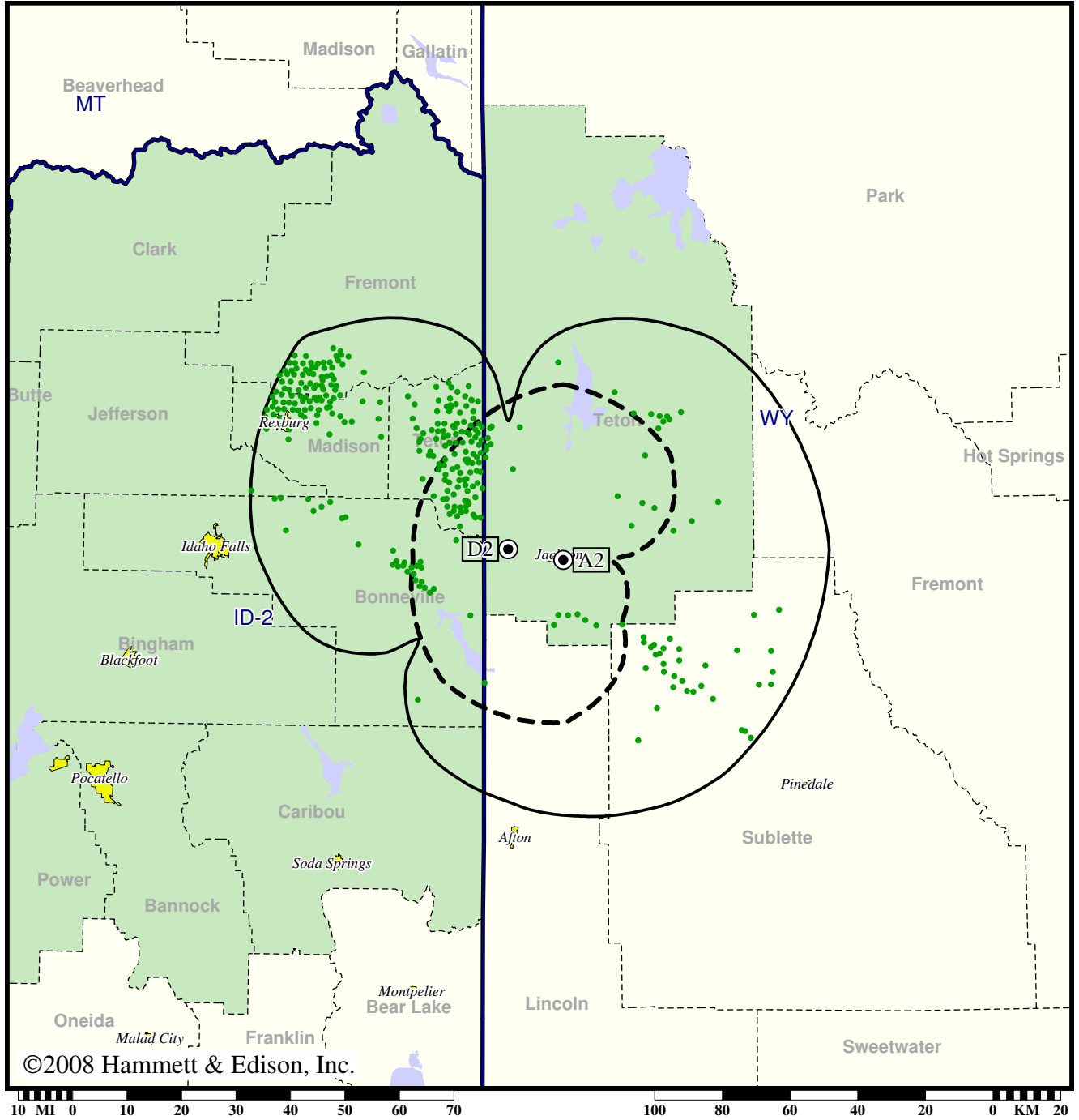
● Coverage gained after DTV transition  
(no symbol) No change in coverage

TV Station KJWY • Analog Channel 2, DTV Channel 2 • Jackson, WY

Expected Change In Coverage: Granted Construction Permit

CP (solid): 0.270 kW ERP at 334 m HAAT, Network: NBC  
vs. Analog (dashed): 0.178 kW ERP at 304 m HAAT, Network: NBC

Market: Idaho Falls-Pocatello, ID



©2008 Hammett & Edison, Inc.

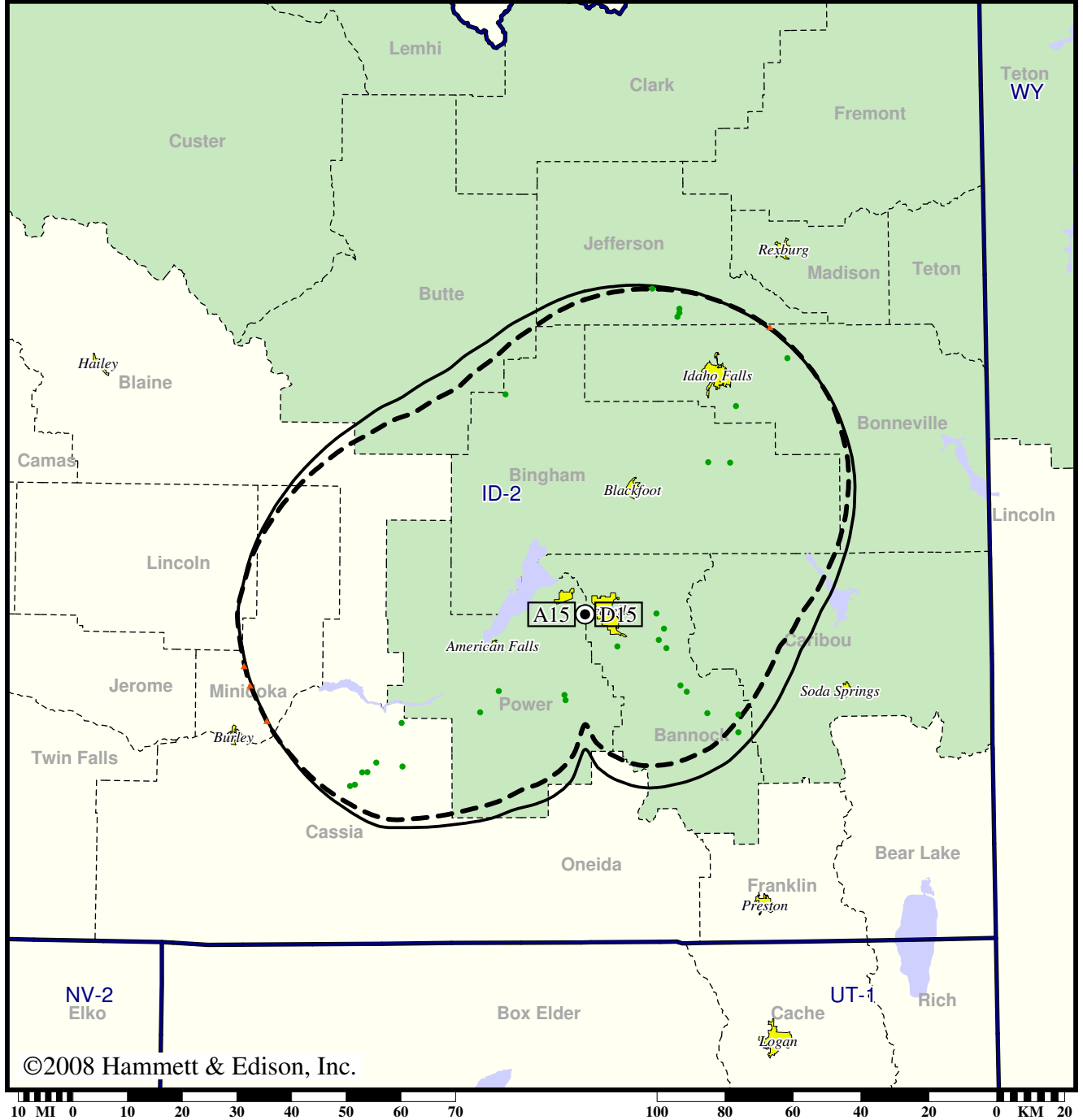
- Coverage gained after DTV transition
- (no symbol) No change in coverage

TV Station KPIF • Analog Channel 15, DTV Channel 15 • Pocatello, ID

Expected Change In Coverage: Granted Construction Permit

CP (solid): 239 kW ERP at 327 m HAAT  
vs. Analog (dashed): 5000 kW ERP at 327 m HAAT

Market: Idaho Falls-Pocatello, ID



©2008 Hammett & Edison, Inc.

- Coverage gained after DTV transition
- (no symbol) No change in coverage
- ▲ Coverage lost after DTV transition

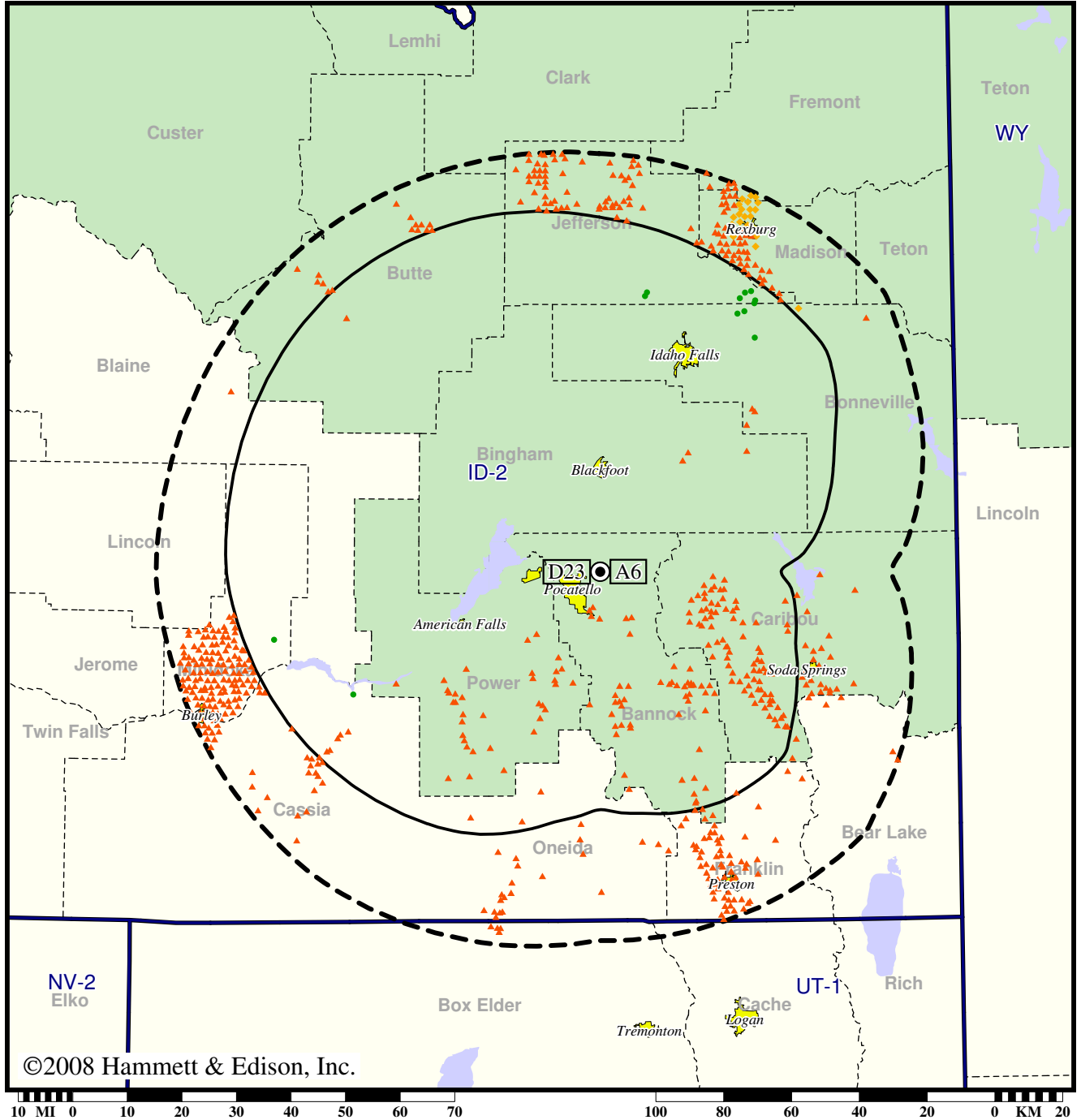


TV Station KPVI • Analog Channel 6, DTV Channel 23 • Pocatello, ID

Expected Change In Coverage: Licensed Operation

Licensed (solid): 505 kW ERP at 398 m HAAT, Network: NBC  
vs. Analog (dashed): 100 kW ERP at 466 m HAAT, Network: NBC

Market: Idaho Falls-Pocatello, ID



©2008 Hammett & Edison, Inc.

10 MI 0 10 20 30 40 50 60 70 100 80 60 40 20 0 KM 20

- Coverage gained after DTV transition
- (no symbol) No change in coverage
- ◆ Coverage lost but still served by same network
- ▲ Coverage lost and no other service by same network