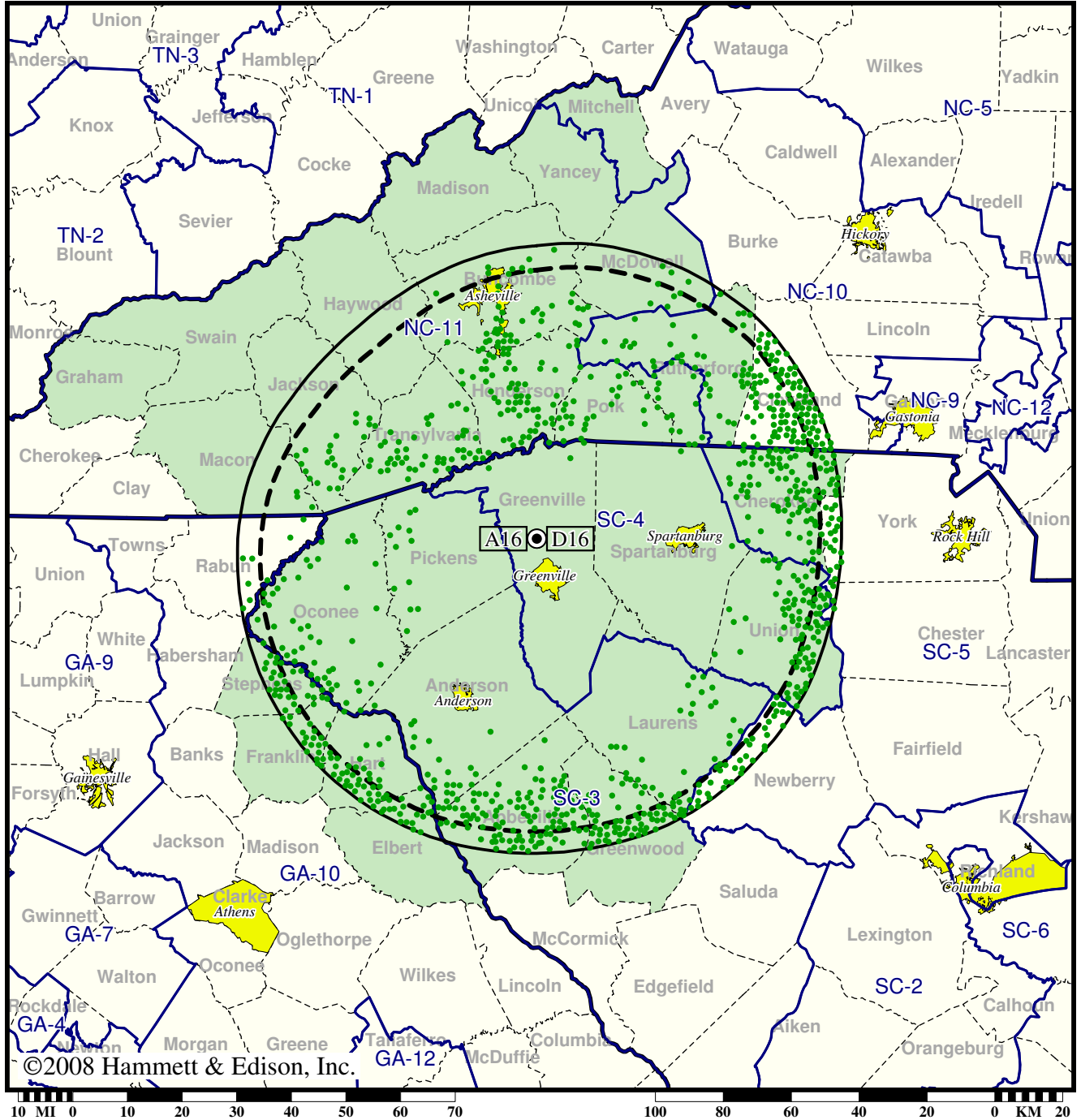


Station WGGG-TV • Analog Channel 16, DTV Channel 16 • Greenville, SC

Expected Change In Coverage: Granted Construction Permit

CP (solid): 175 kW ERP at 360 m HAAT
vs. Analog (dashed): 2240 kW ERP at 349 m HAAT

Market: Greenville-Spartanburg, SC-Asheville, NC



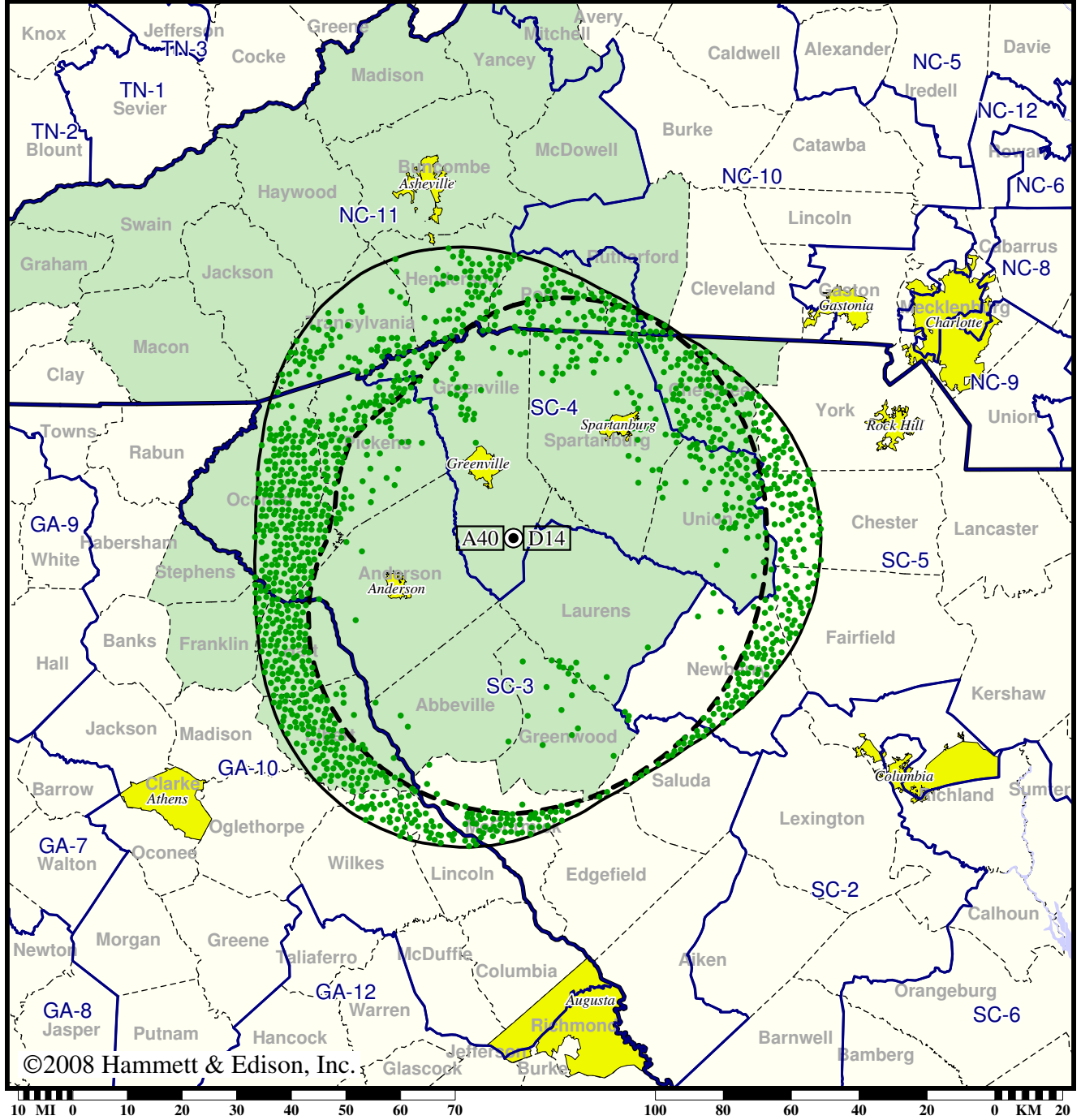
- Coverage gained after DTV transition
- (no symbol) No change in coverage

Station WMYA-TV • Analog Channel 40, DTV Channel 14 • Anderson, SC

Expected Change In Coverage: Post-Transition Appendix B Facility

Appendix B (solid): 310 kW ERP at 311 m HAAT
vs. Analog (dashed): 2570 kW ERP at 311 m HAAT

Market: Greenville-Spartanburg, SC-Asheville, NC



©2008 Hammett & Edison, Inc.

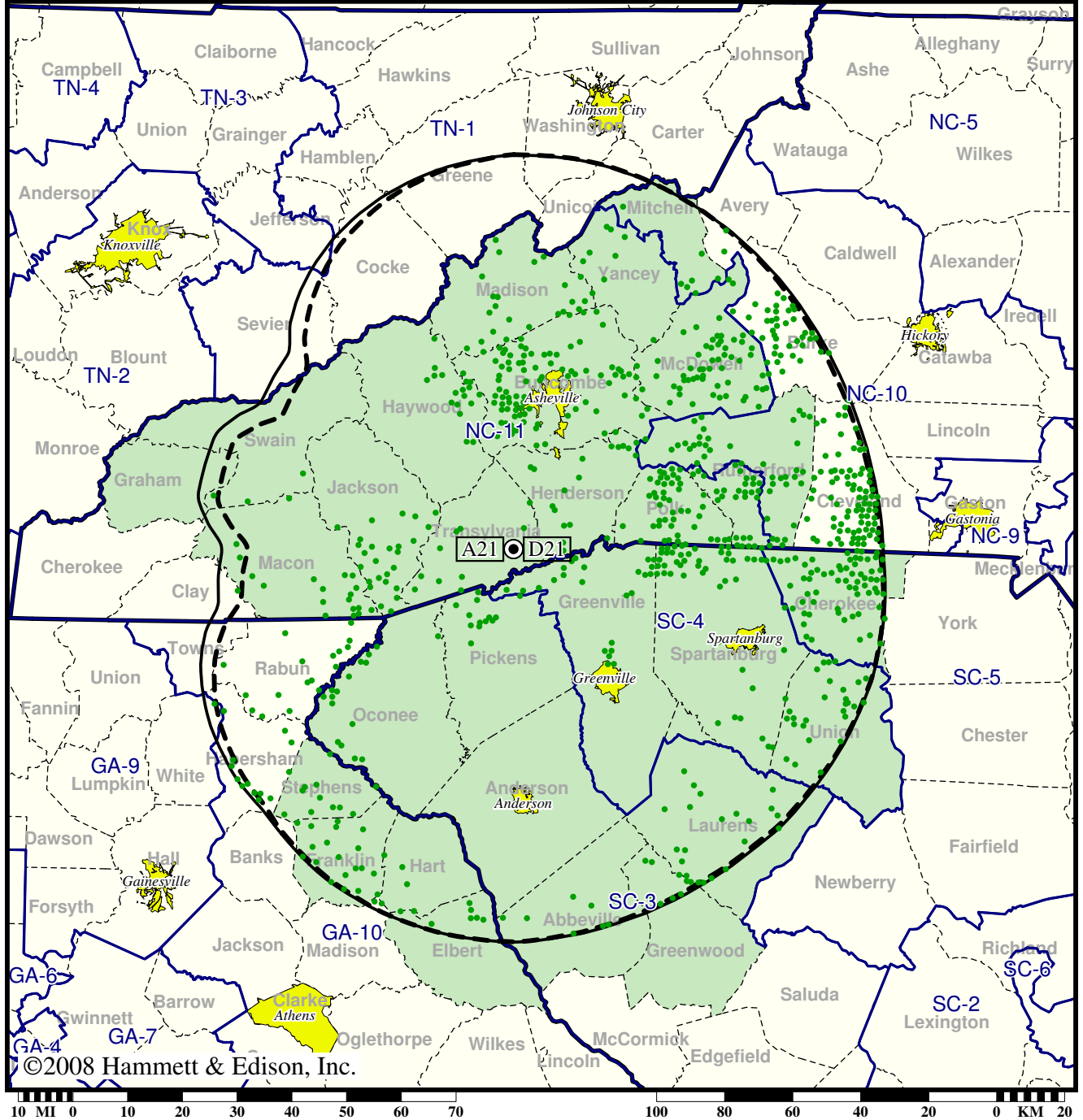
- Coverage gained after DTV transition
- (no symbol) No change in coverage

TV Station WHNS • Analog Channel 21, DTV Channel 21 • Greenville, SC

Expected Change In Coverage: Granted Construction Permit

CP (solid): 160 kW ERP at 761 m HAAT, Network: Fox
vs. Analog (dashed): 3390 kW ERP at 761 m HAAT, Network: Fox

Market: Greenville-Spartanburg, SC-Asheville, NC



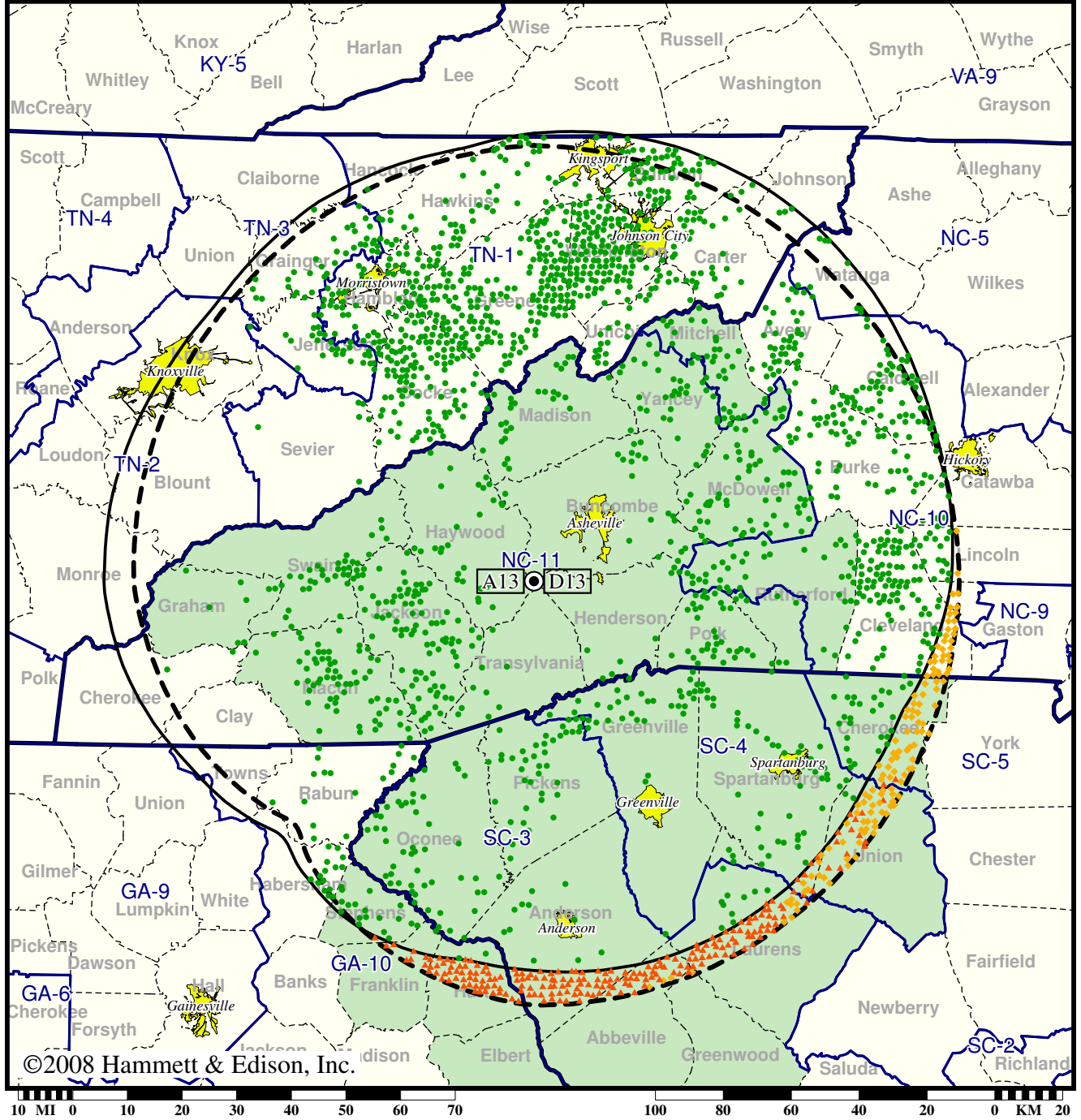
- Coverage gained after DTV transition
- (no symbol) No change in coverage

TV Station WLOS • Analog Channel 13, DTV Channel 13 • Asheville, NC

Expected Change In Coverage: Granted Construction Permit

CP (solid): 29.8 kW ERP at 853 m HAAT, Network: ABC
 vs. Analog (dashed): 178 kW ERP at 853 m HAAT, Network: ABC

Market: Greenville-Spartanburg, SC-Asheville, NC



©2008 Hammett & Edison, Inc.

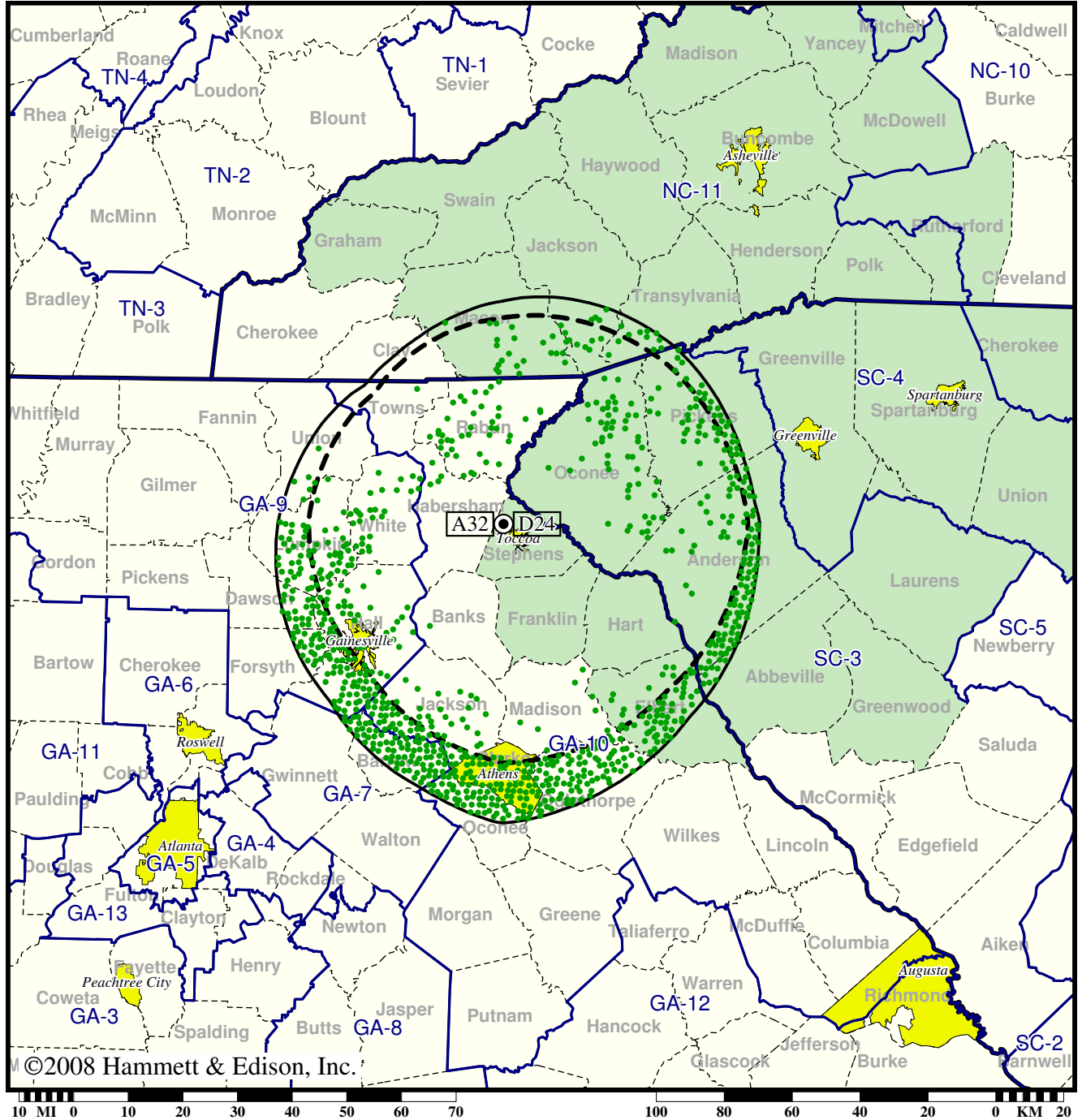
- Coverage gained after DTV transition
- (no symbol) No change in coverage
- ◆ Coverage lost but still served by same network
- ▲ Coverage lost and no other service by same network

Station WNEG-TV • Analog Channel 32, DTV Channel 24 • Toccoa, GA

Expected Change In Coverage: Granted Construction Permit

CP (solid): 240 kW ERP at 235 m HAAT, Network: CBS
vs. Analog (dashed): 646 kW ERP at 253 m HAAT, Network: CBS

Market: Greenville-Spartanburg, SC-Asheville, NC



©2008 Hammett & Edison, Inc.

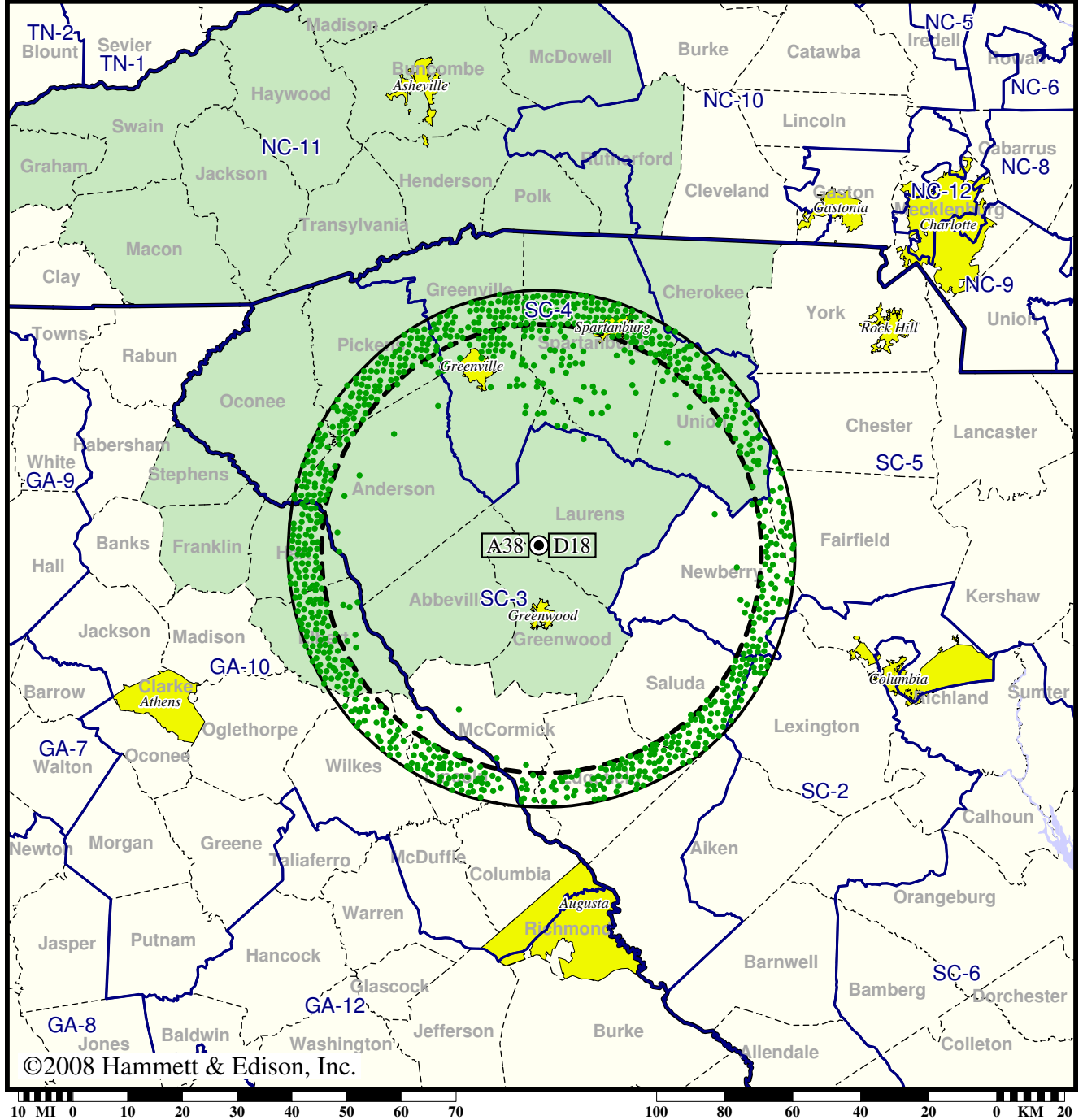
- Coverage gained after DTV transition
- (no symbol) No change in coverage

TV Station WNEH • Analog Channel 38, DTV Channel 18 • Greenwood, SC

Expected Change In Coverage: Granted Construction Permit

CP (solid): 107 kW ERP at 230 m HAAT, Network: PBS
vs. Analog (dashed): 1225 kW ERP at 230 m HAAT, Network: PBS

Market: Greenville-Spartanburg, SC-Asheville, NC



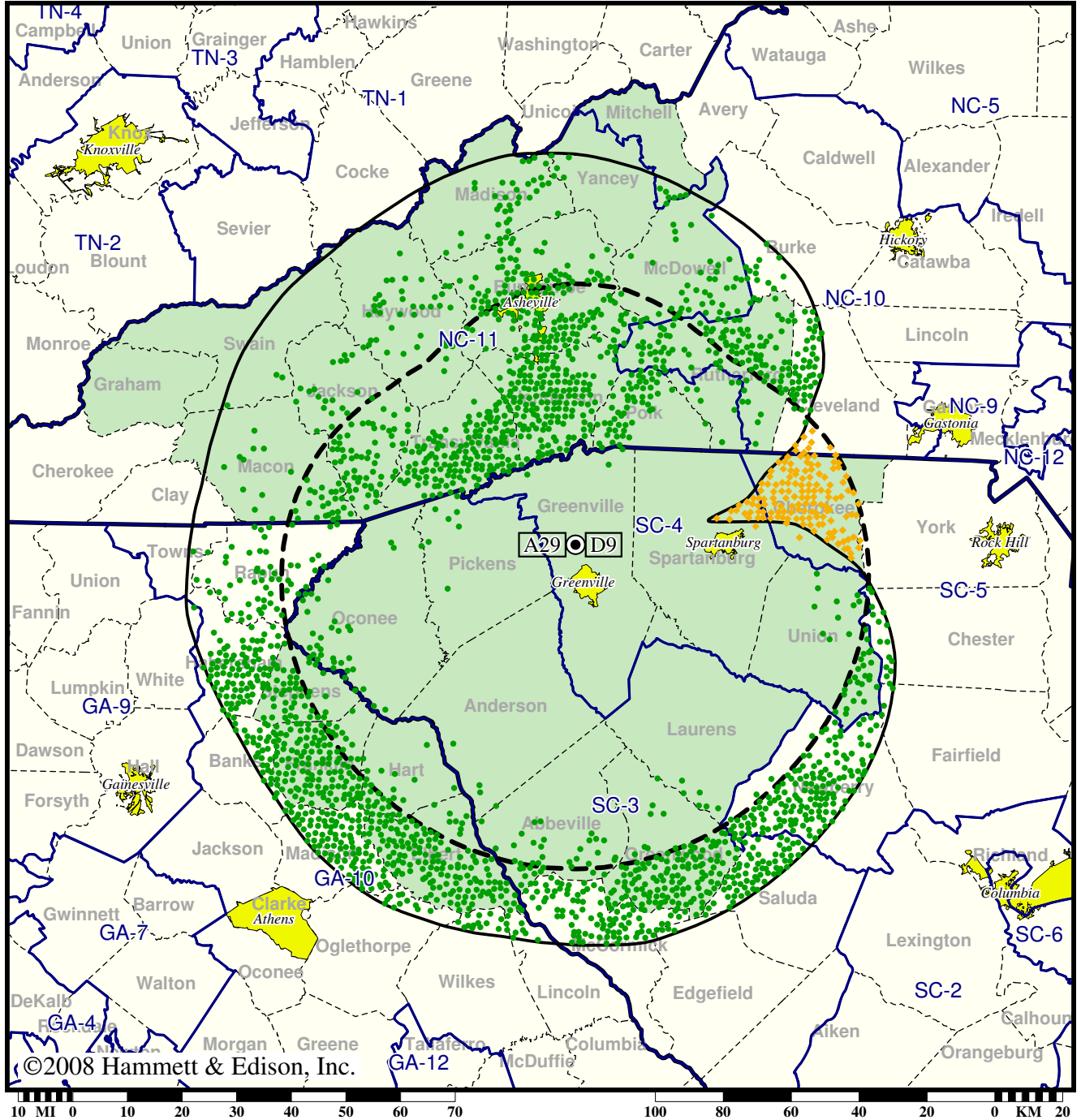
- Coverage gained after DTV transition
- (no symbol) No change in coverage

TV Station WNTV • Analog Channel 29, DTV Channel 9 • Greenville, SC

Expected Change In Coverage: Granted Construction Permit

CP (solid): 102 kW ERP at 378 m HAAT, Network: PBS
vs. Analog (dashed): 5000 kW ERP at 392 m HAAT, Network: PBS

Market: Greenville-Spartanburg, SC-Asheville, NC



©2008 Hammett & Edison, Inc.

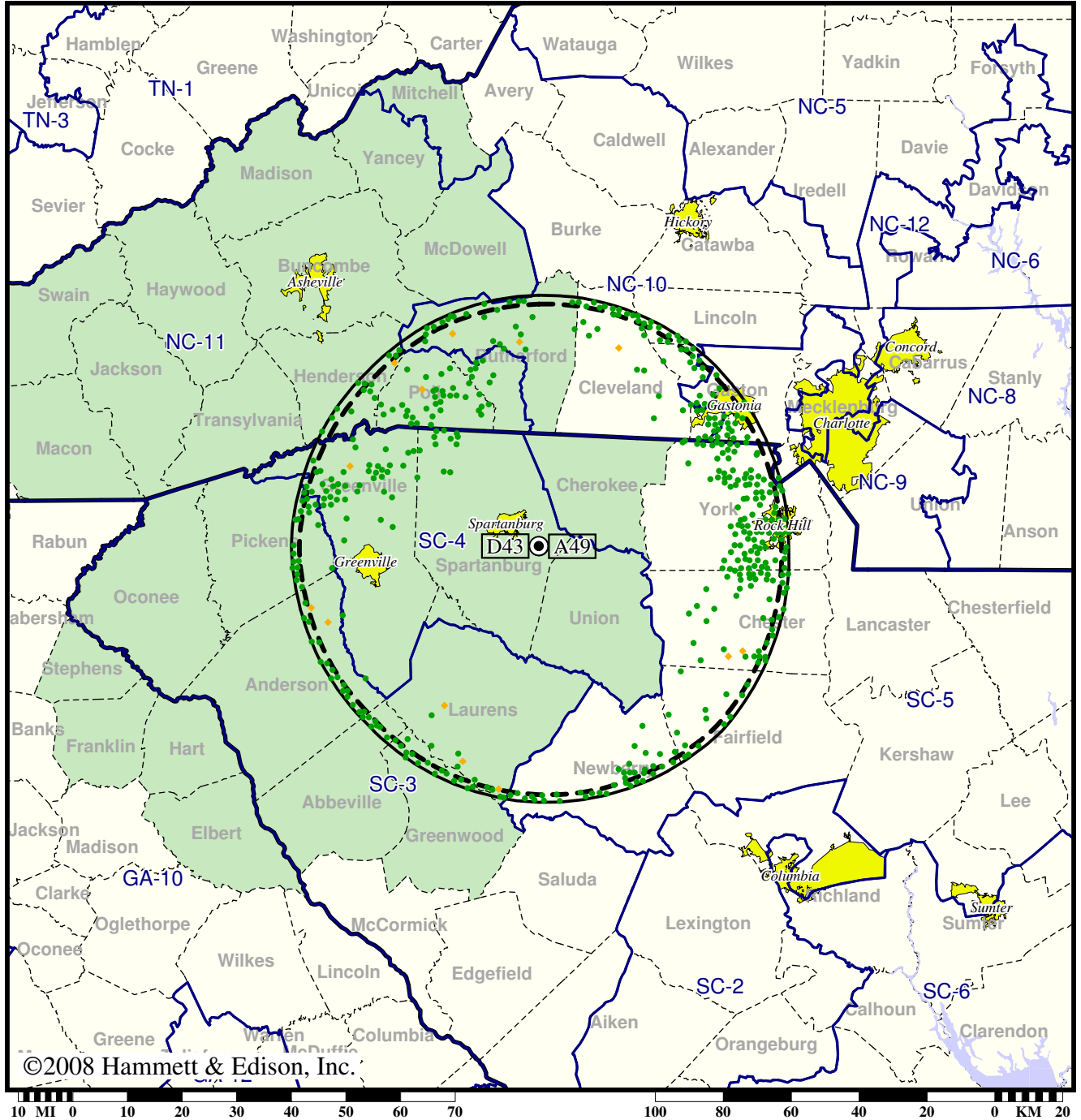
- Coverage gained after DTV transition
- (no symbol) No change in coverage
- ◆ Coverage lost but still served by same network

Station WRET-TV • Analog Channel 49, DTV Channel 43 • Spartanburg, SC

Expected Change In Coverage: Licensed Operation

Licensed (solid): 50.0 kW ERP at 302 m HAAT, Network: PBS
vs. Analog (dashed): 1740 kW ERP at 296 m HAAT, Network: PBS

Market: Greenville-Spartanburg, SC-Asheville, NC



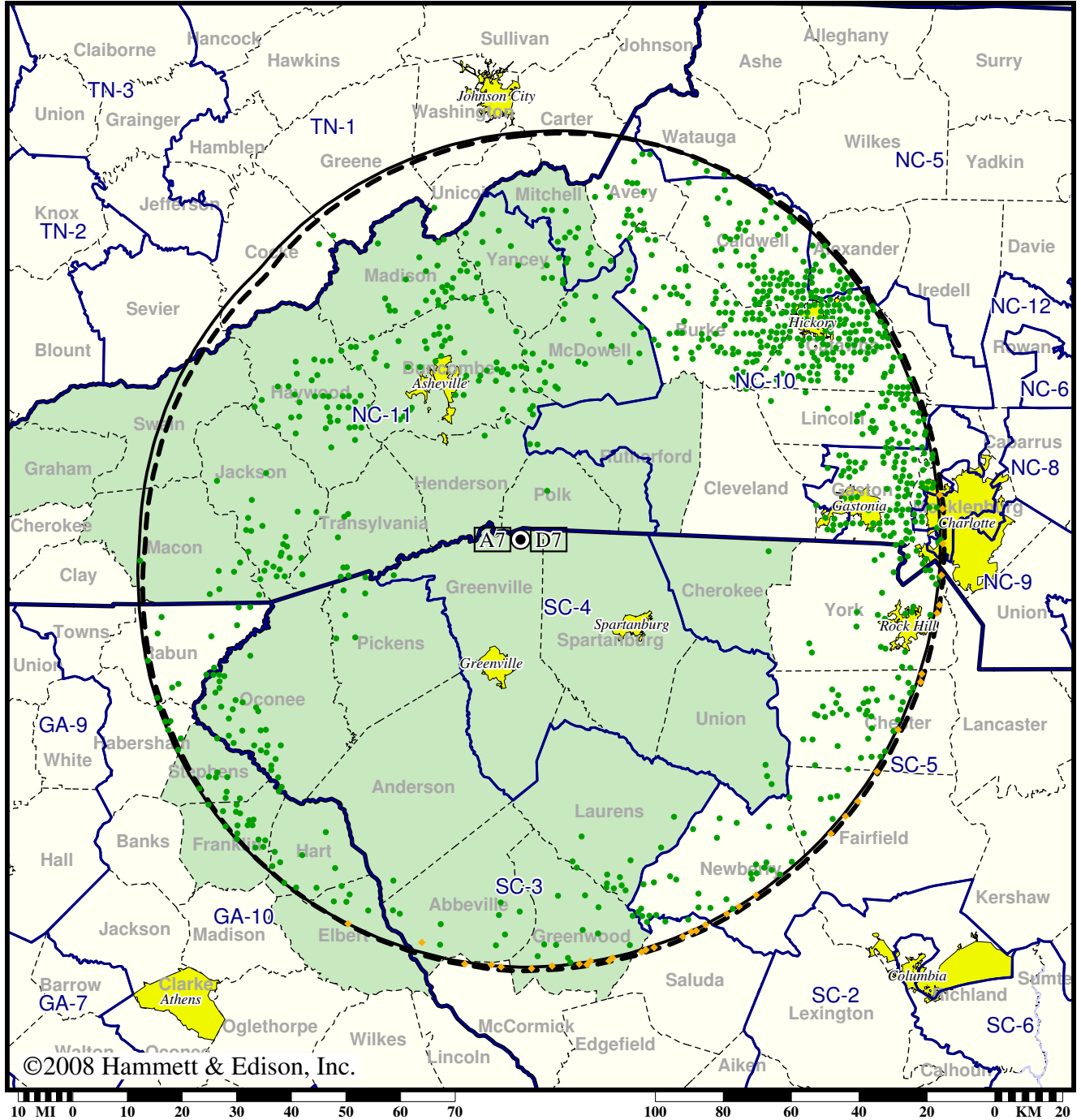
- Coverage gained after DTV transition
- (no symbol) No change in coverage
- ◆ Coverage lost but still served by same network

Station WSPA-TV • Analog Channel 7, DTV Channel 7 • Spartanburg, SC

Expected Change In Coverage: Granted Construction Permit

CP (solid): 20.0 kW ERP at 676 m HAAT, Network: CBS
vs. Analog (dashed): 265 kW ERP at 676 m HAAT, Network: CBS

Market: Greenville-Spartanburg, SC-Asheville, NC



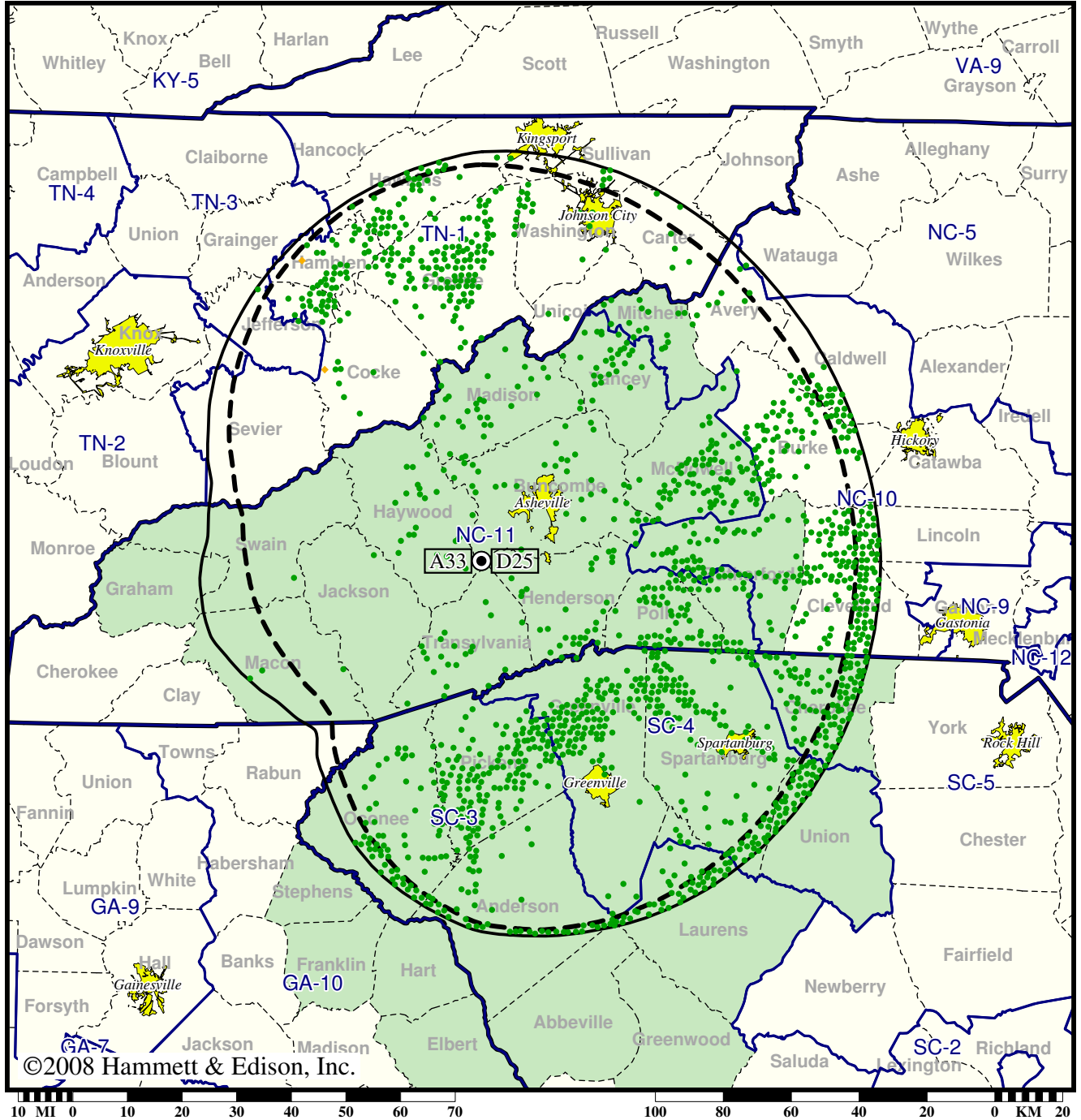
- Coverage gained after DTV transition
- (no symbol) No change in coverage
- ◆ Coverage lost but still served by same network

Station WUNF-TV • Analog Channel 33, DTV Channel 25 • Asheville, NC

Expected Change In Coverage: Licensed Operation

Licensed (solid): 185 kW ERP at 797 m HAAT, Network: PBS
vs. Analog (dashed): 2690 kW ERP at 816 m HAAT, Network: PBS

Market: Greenville-Spartanburg, SC-Asheville, NC



©2008 Hammett & Edison, Inc.

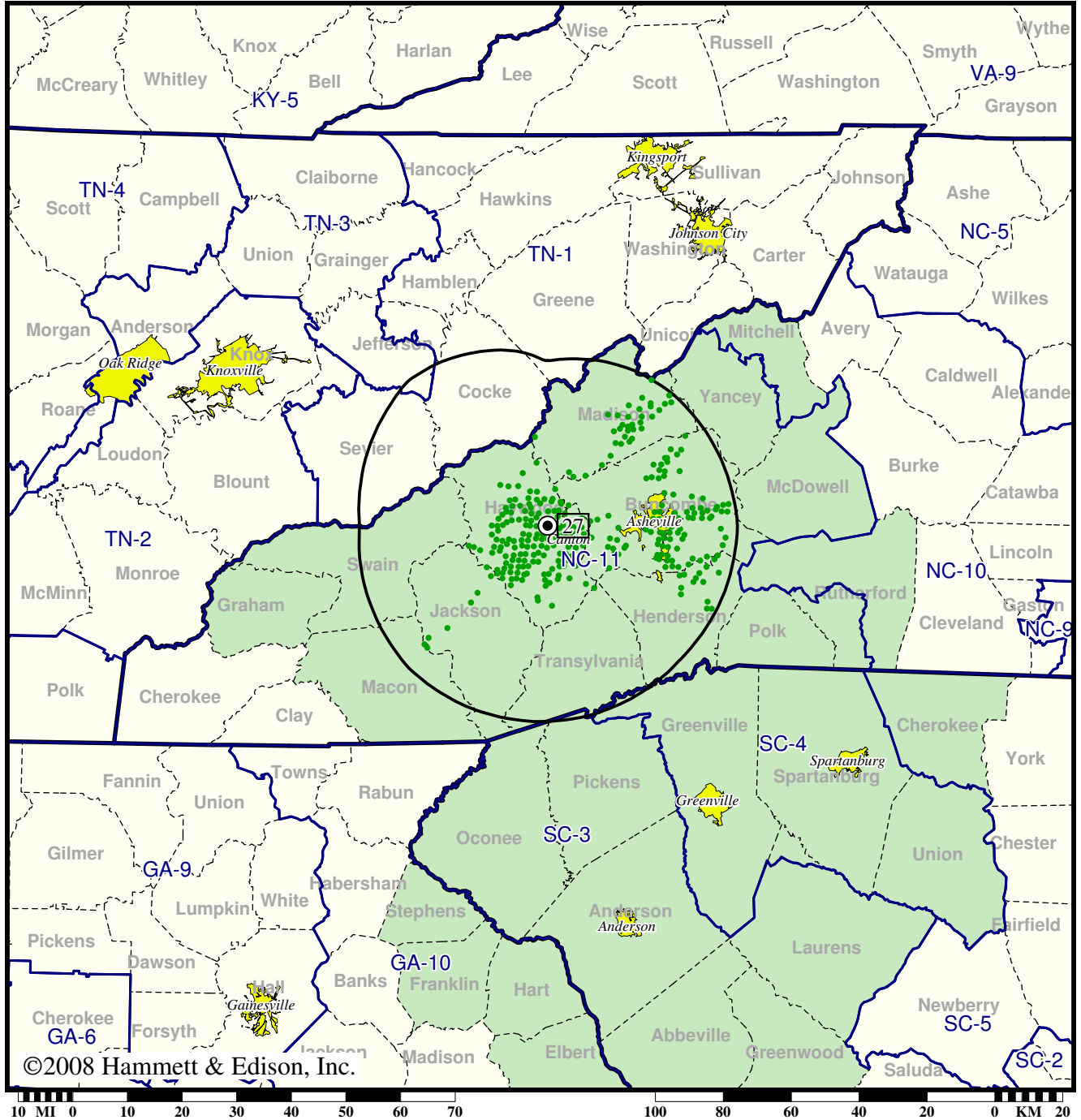
- Coverage gained after DTV transition
- (no symbol) No change in coverage
- ◆ Coverage lost but still served by same network

DTV Station WUNW • Channel 27 • Canton, NC

Expected Change In Coverage: Granted Construction Permit

CP (solid): 0.350 kW ERP at 474 m HAAT

Market: Greenville-Spartanburg, SC-Asheville, NC



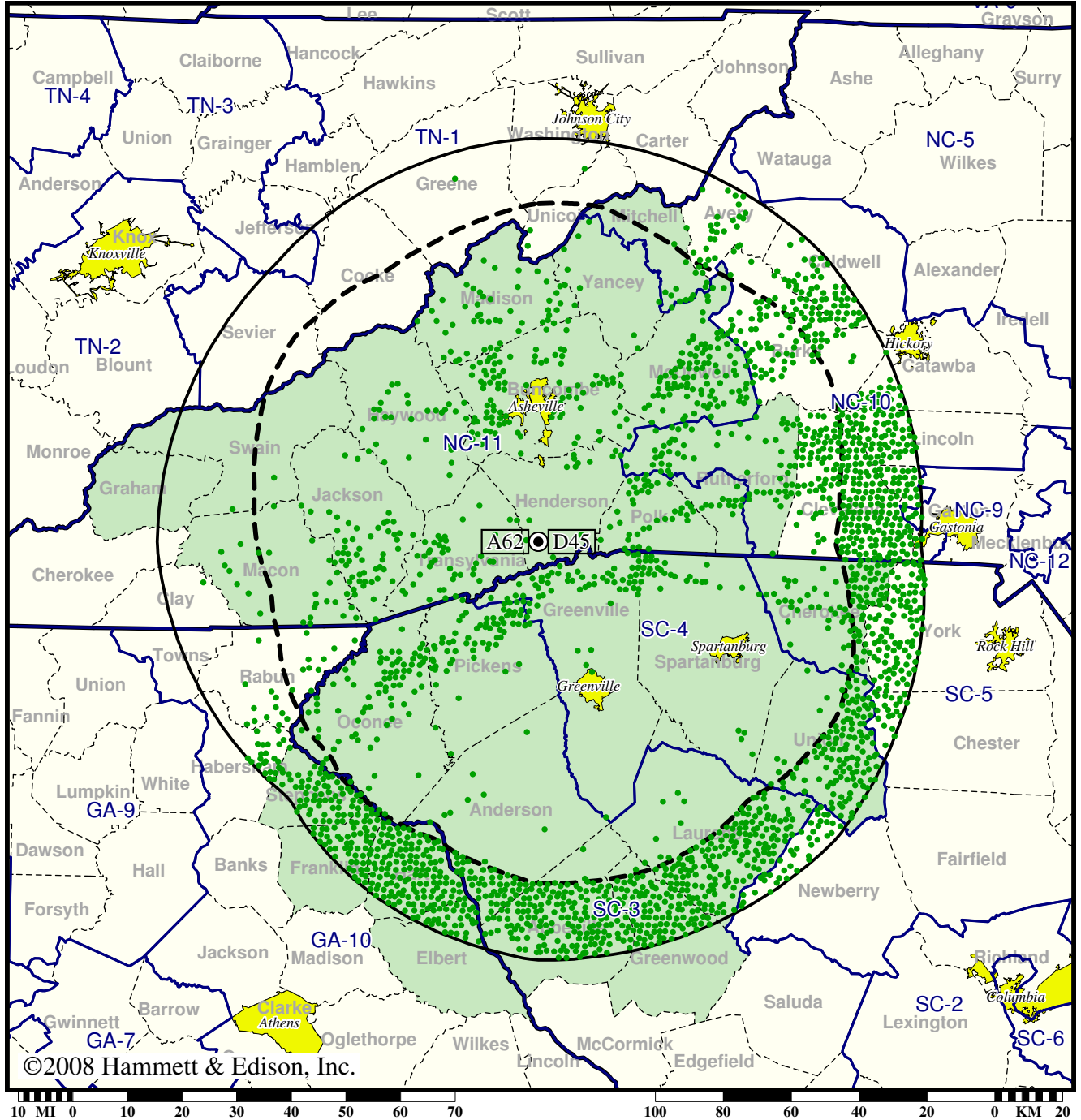
- Coverage gained after DTV transition
- (no symbol) No change in coverage

TV Station WYCW • Analog Channel 62, DTV Channel 45 • Asheville, NC

Expected Change In Coverage: Post-Transition Appendix B Facility

Appendix B (solid): 1000 kW ERP at 555 m HAAT
vs. Analog (dashed): 5000 kW ERP at 556 m HAAT

Market: Greenville-Spartanburg, SC-Asheville, NC



©2008 Hammett & Edison, Inc.

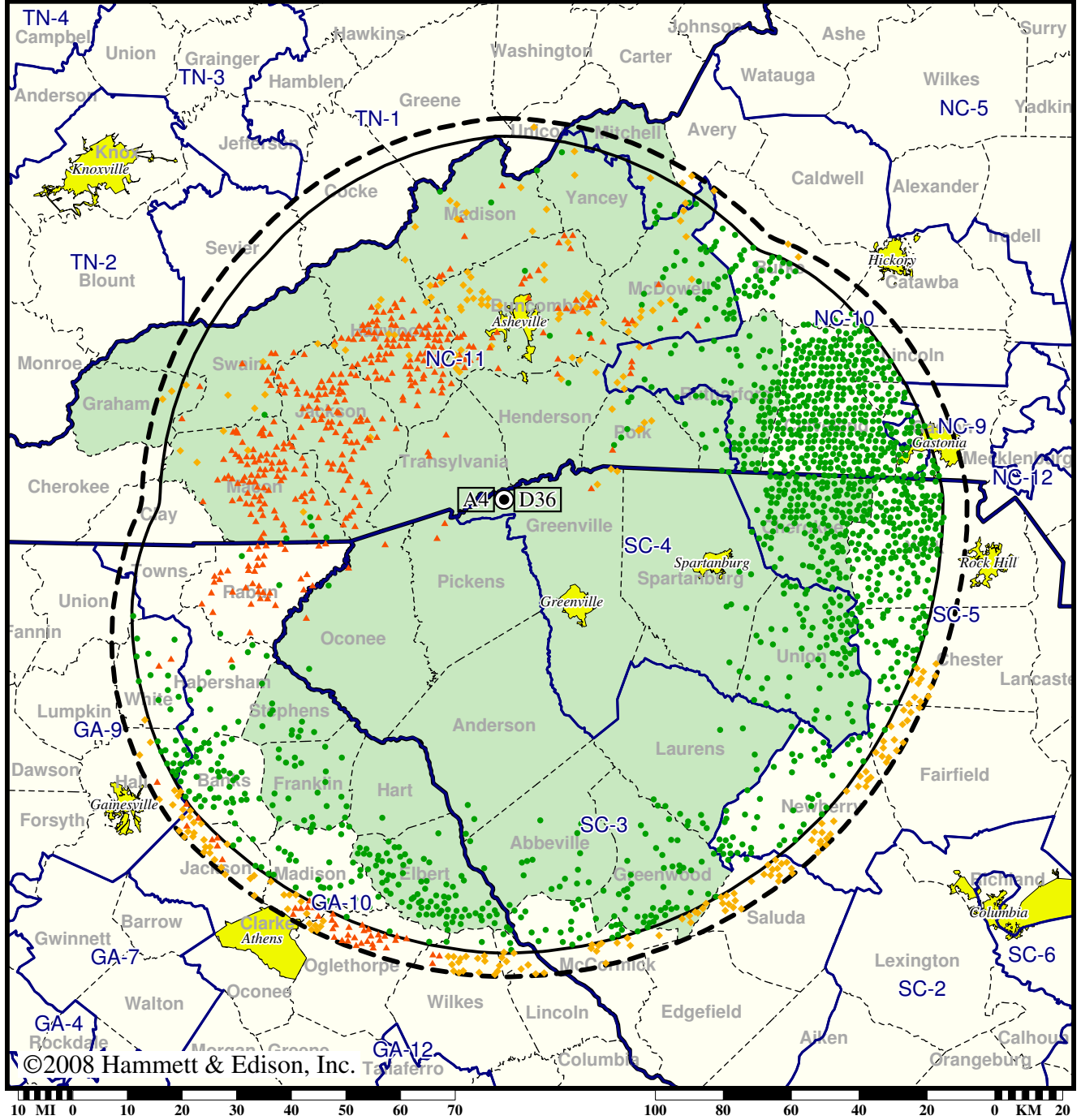
- Coverage gained after DTV transition
- (no symbol) No change in coverage

TV Station WYFF • Analog Channel 4, DTV Channel 36 • Greenville, SC

Expected Change In Coverage: Granted Construction Permit

CP (solid): 1000 kW ERP at 596 m HAAT, Network: NBC
 vs. Analog (dashed): 100 kW ERP at 610 m HAAT, Network: NBC

Market: Greenville-Spartanburg, SC-Asheville, NC



©2008 Hammett & Edison, Inc.

- Coverage gained after DTV transition
- (no symbol) No change in coverage
- ◆ Coverage lost but still served by same network
- ▲ Coverage lost and no other service by same network