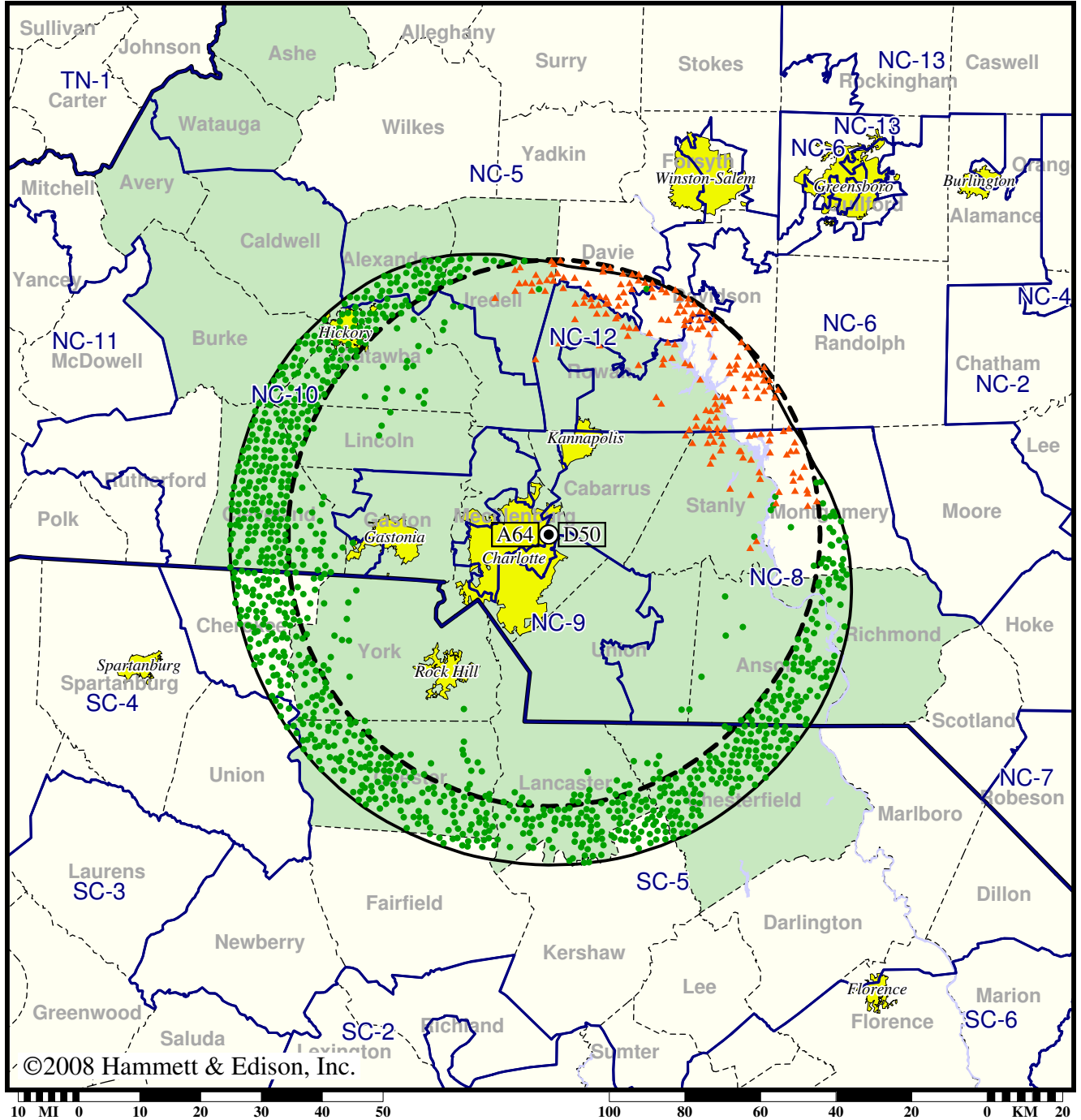


Station WAXN-TV • Analog Channel 64, DTV Channel 50 • Kannapolis, NC

Expected Change In Coverage: Granted Construction Permit

CP (solid): 150 kW ERP at 364 m HAAT  
vs. Analog (dashed): 1100 kW ERP at 348 m HAAT

Market: Charlotte, NC



©2008 Hammett & Edison, Inc.

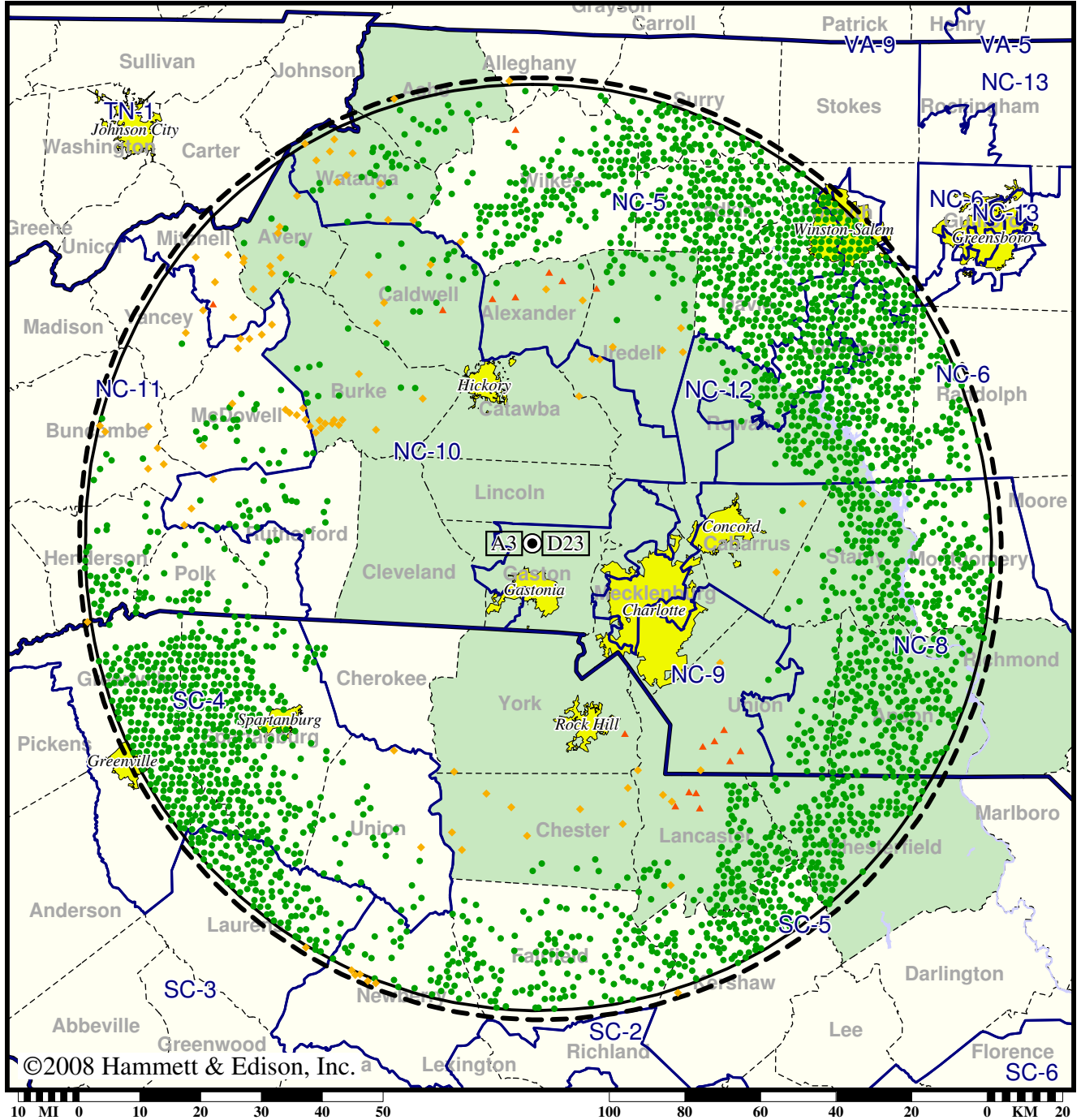
- Coverage gained after DTV transition
- (no symbol) No change in coverage
- ▲ Coverage lost after DTV transition

TV Station WBTV • Analog Channel 3, DTV Channel 23 • Charlotte, NC

Expected Change In Coverage: Licensed Operation

Licensed (solid): 1000 kW ERP at 565 m HAAT, Network: CBS  
vs. Analog (dashed): 100 kW ERP at 541 m HAAT, Network: CBS

Market: Charlotte, NC



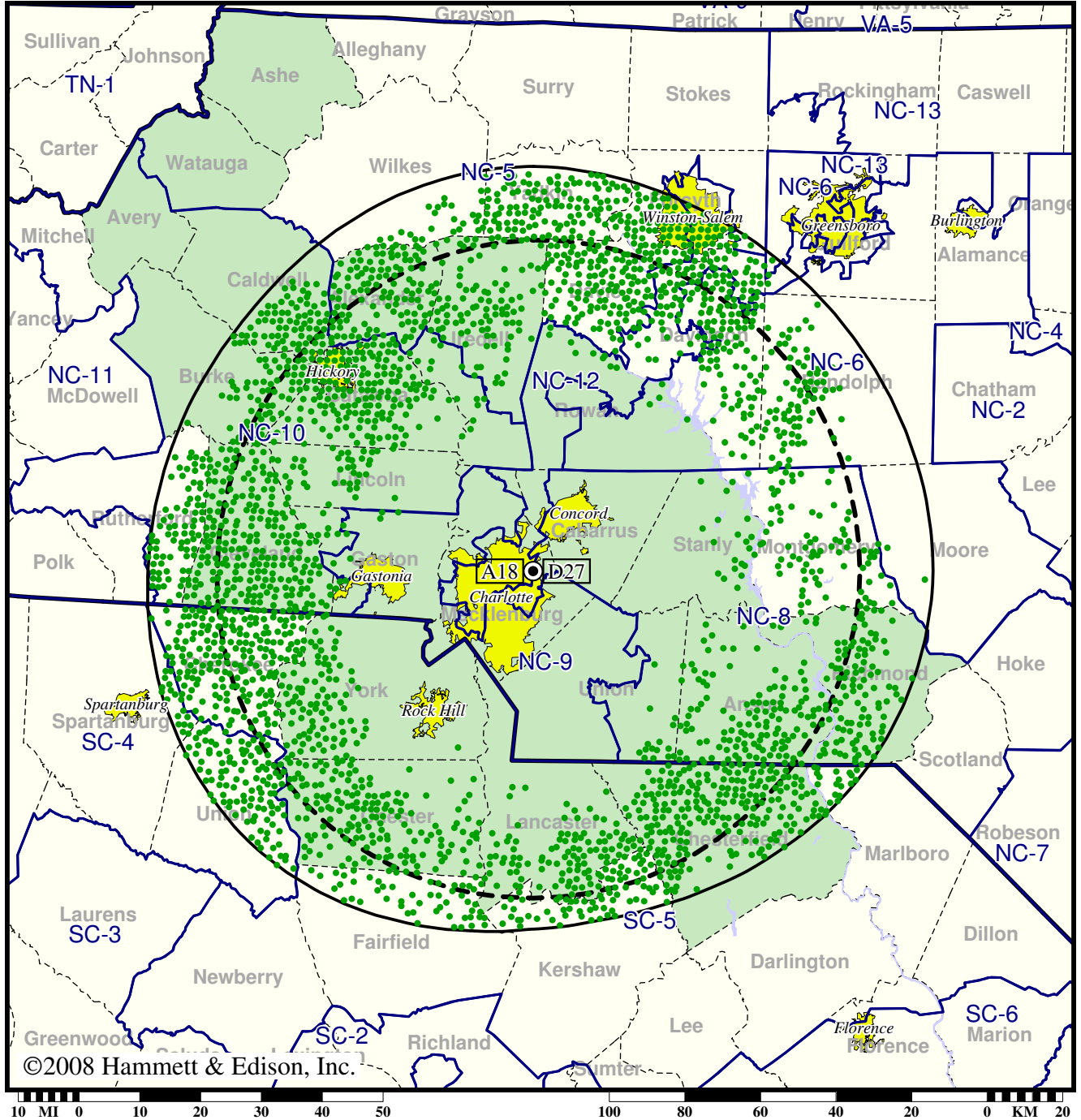
- Coverage gained after DTV transition
- (no symbol) No change in coverage
- ◆ Coverage lost but still served by same network
- ▲ Coverage lost and no other service by same network

TV Station WCCB • Analog Channel 18, DTV Channel 27 • Charlotte, NC

Expected Change In Coverage: Licensed Operation

Licensed (solid): 1000 kW ERP at 368 m HAAT, Network: Fox  
vs. Analog (dashed): 2090 kW ERP at 389 m HAAT, Network: Fox

Market: Charlotte, NC



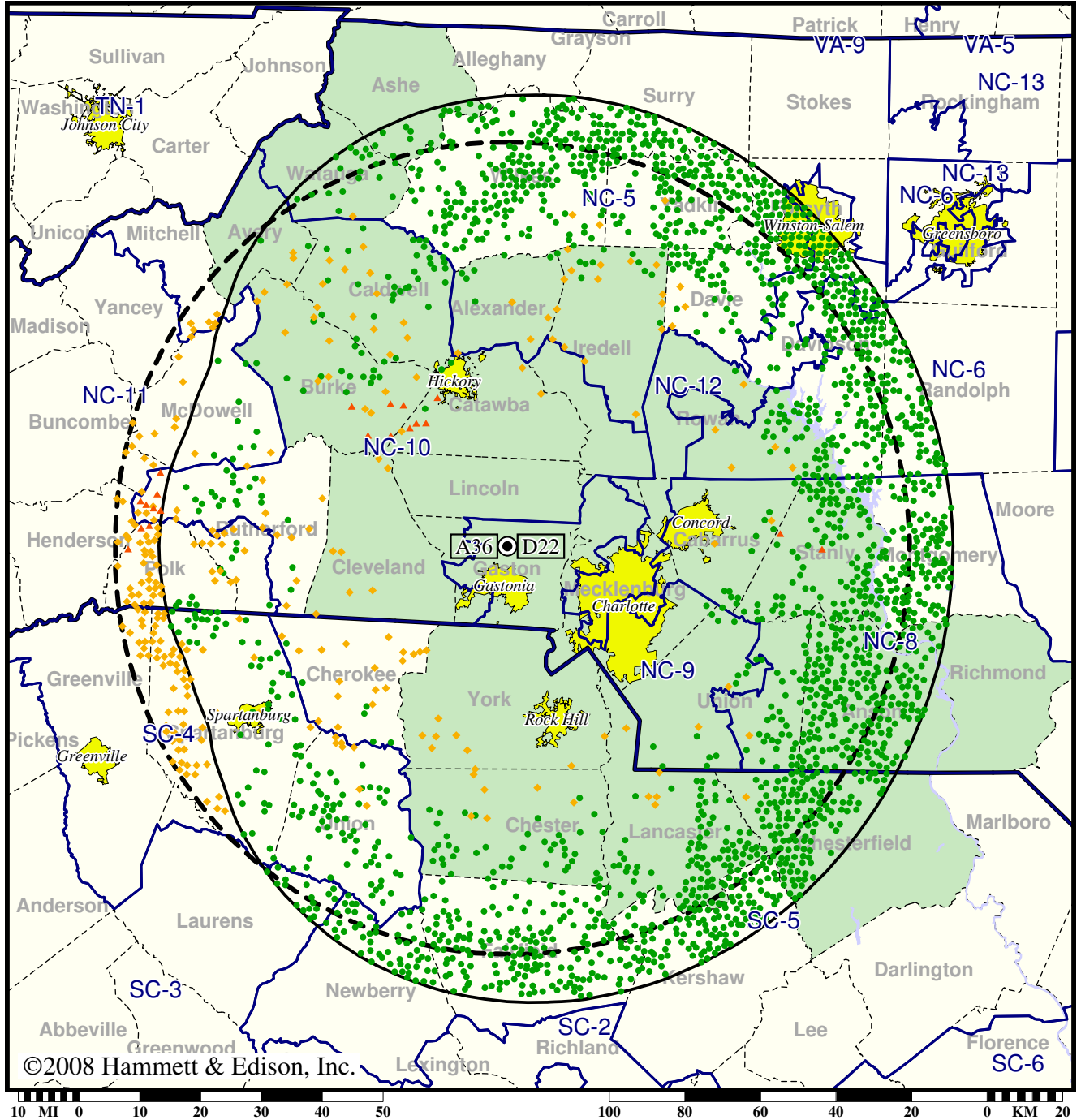
- Coverage gained after DTV transition
- (no symbol) No change in coverage

Station WCNC-TV • Analog Channel 36, DTV Channel 22 • Charlotte, NC

Expected Change In Coverage: Licensed Operation

Licensed (solid): 791 kW ERP at 577 m HAAT, Network: NBC  
vs. Analog (dashed): 5000 kW ERP at 595 m HAAT, Network: NBC

Market: Charlotte, NC



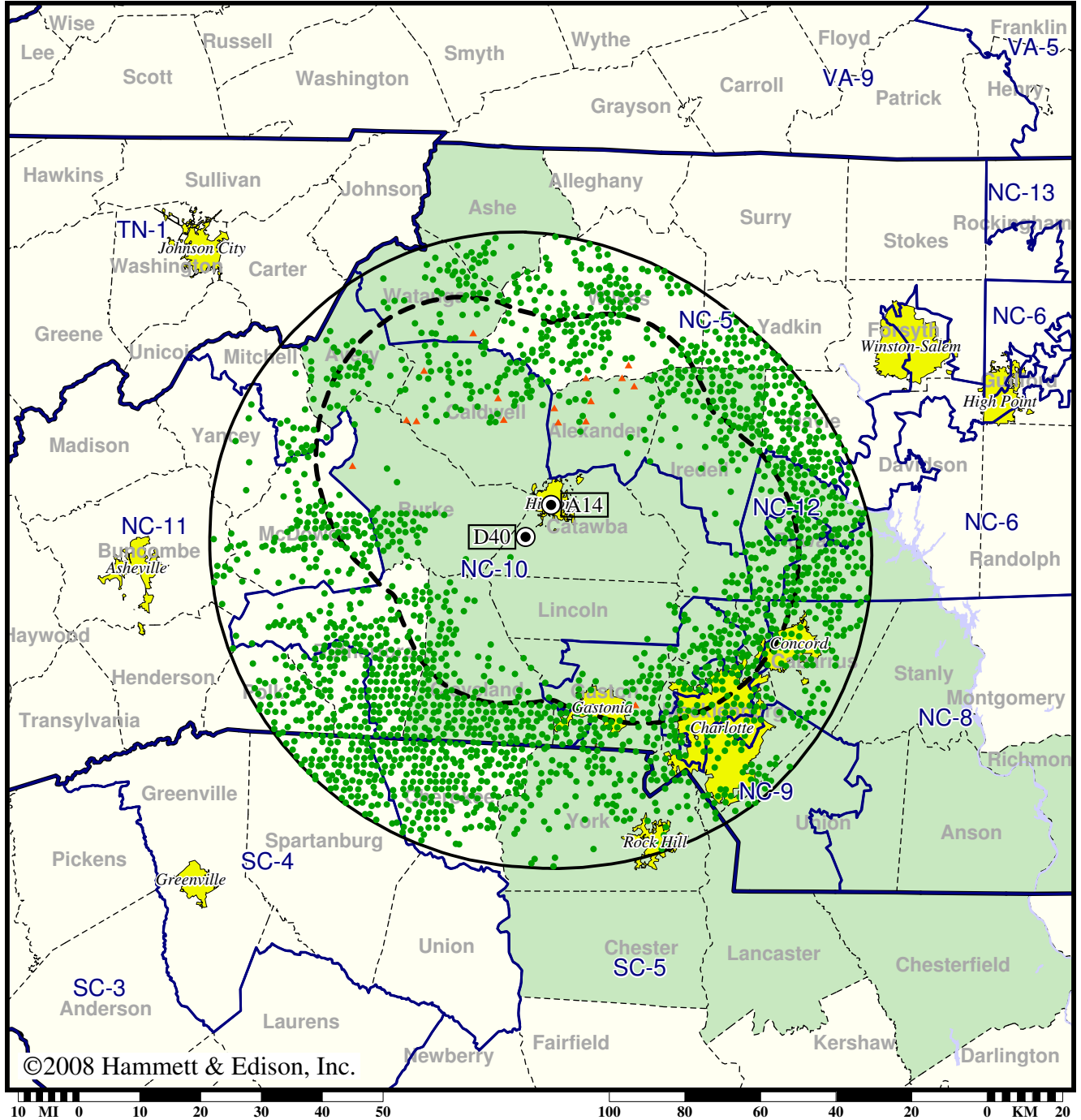
- Coverage gained after DTV transition
- (no symbol) No change in coverage
- ◆ Coverage lost but still served by same network
- ▲ Coverage lost and no other service by same network

Station WHKY-TV • Analog Channel 14, DTV Channel 40 • Hickory, NC

Expected Change In Coverage: Granted Construction Permit

CP (solid): 950 kW ERP at 251 m HAAT  
vs. Analog (dashed): 2000 kW ERP at 182 m HAAT

Market: Charlotte, NC



©2008 Hammett & Edison, Inc.

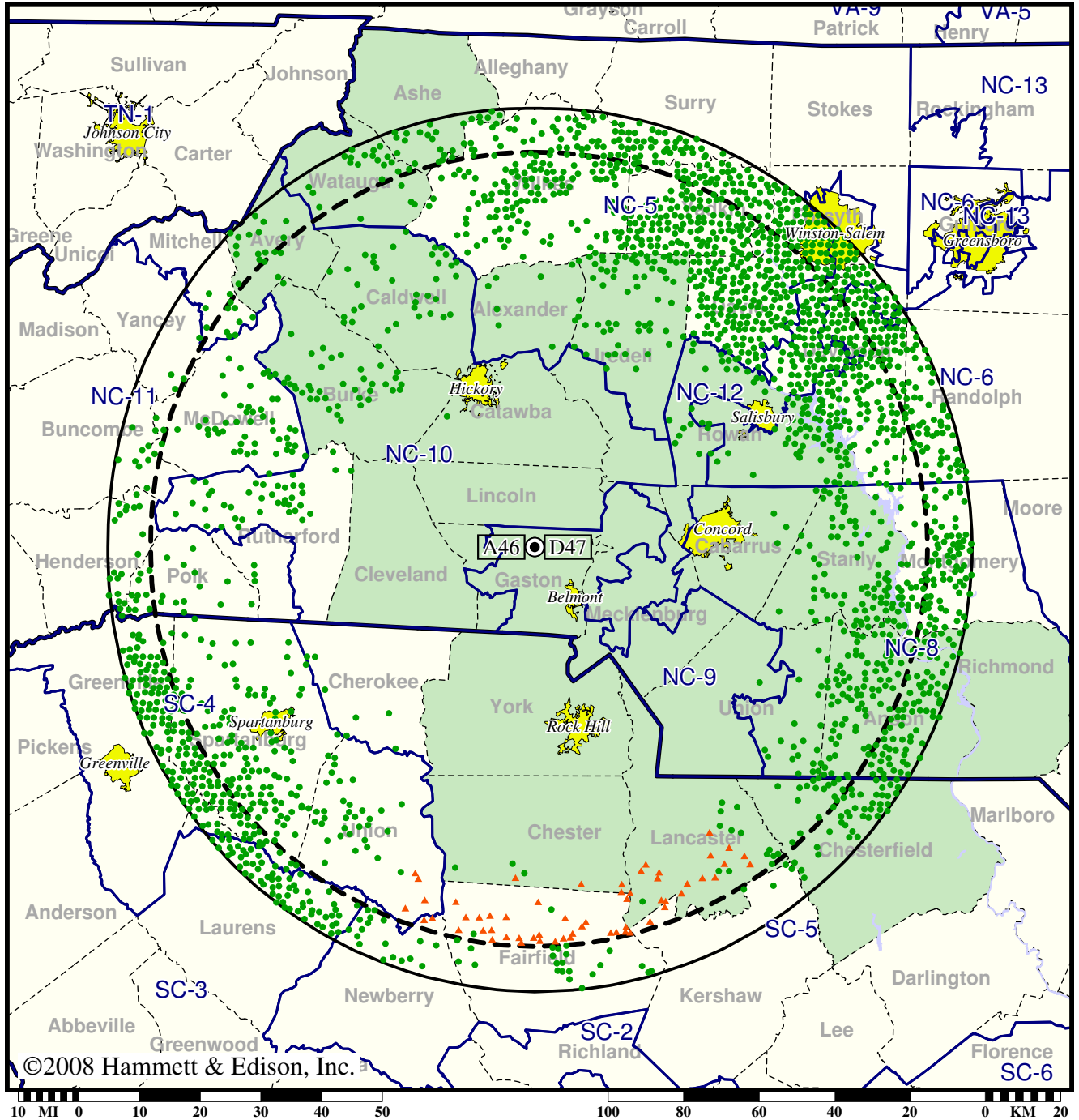
- Coverage gained after DTV transition
- (no symbol) No change in coverage
- ▲ Coverage lost after DTV transition

TV Station WJZY • Analog Channel 46, DTV Channel 47 • Belmont, NC

Expected Change In Coverage: Granted Construction Permit

CP (solid): 1000 kW ERP at 554 m HAAT  
vs. Analog (dashed): 5000 kW ERP at 594 m HAAT

Market: Charlotte, NC



©2008 Hammett & Edison, Inc.



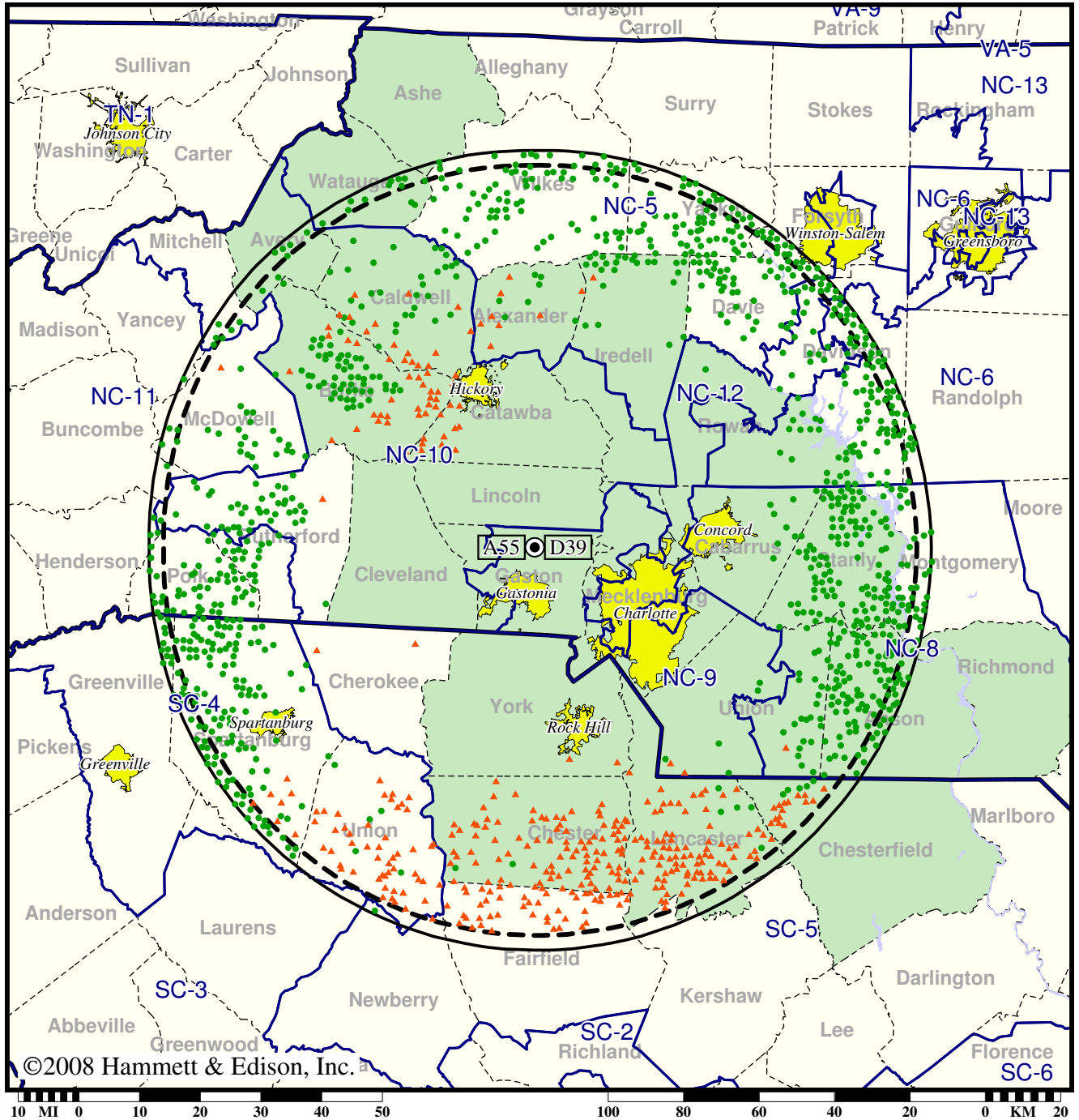
- Coverage gained after DTV transition
- (no symbol) No change in coverage
- ▲ Coverage lost after DTV transition

Station WMYT-TV • Analog Channel 55, DTV Channel 39 • Rock Hill, SC

Expected Change In Coverage: Granted Construction Permit

CP (solid): 225 kW ERP at 571 m HAAT  
vs. Analog (dashed): 5000 kW ERP at 570 m HAAT

Market: Charlotte, NC



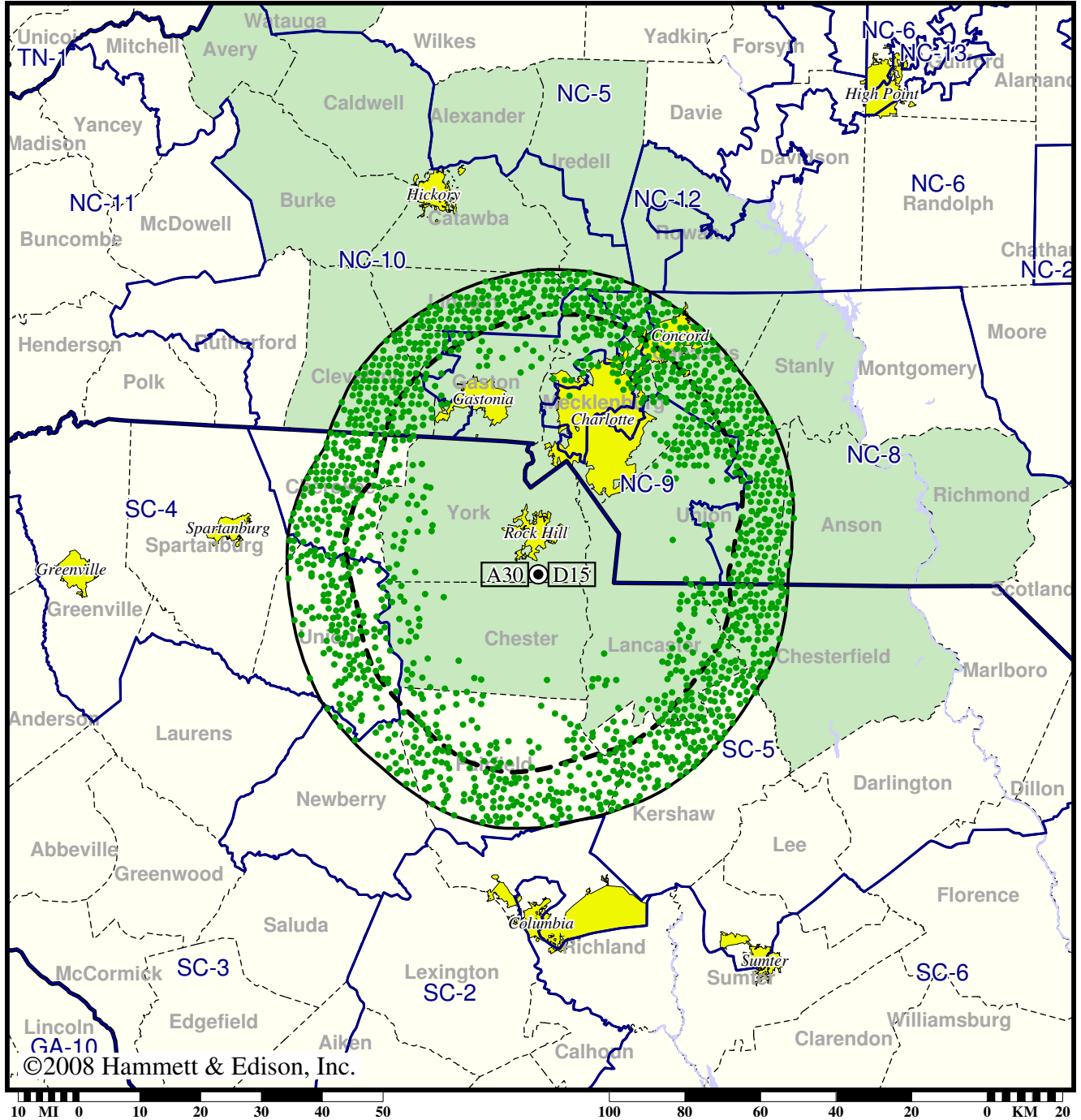
- Coverage gained after DTV transition
- (no symbol) No change in coverage
- ▲ Coverage lost after DTV transition

Station WNSC-TV • Analog Channel 30, DTV Channel 15 • Rock Hill, SC

Expected Change In Coverage: Licensed Operation

Licensed (solid): 403 kW ERP at 212 m HAAT, Network: PBS  
vs. Analog (dashed): 2674 kW ERP at 212 m HAAT, Network: PBS

Market: Charlotte, NC



- Coverage gained after DTV transition
- (no symbol) No change in coverage

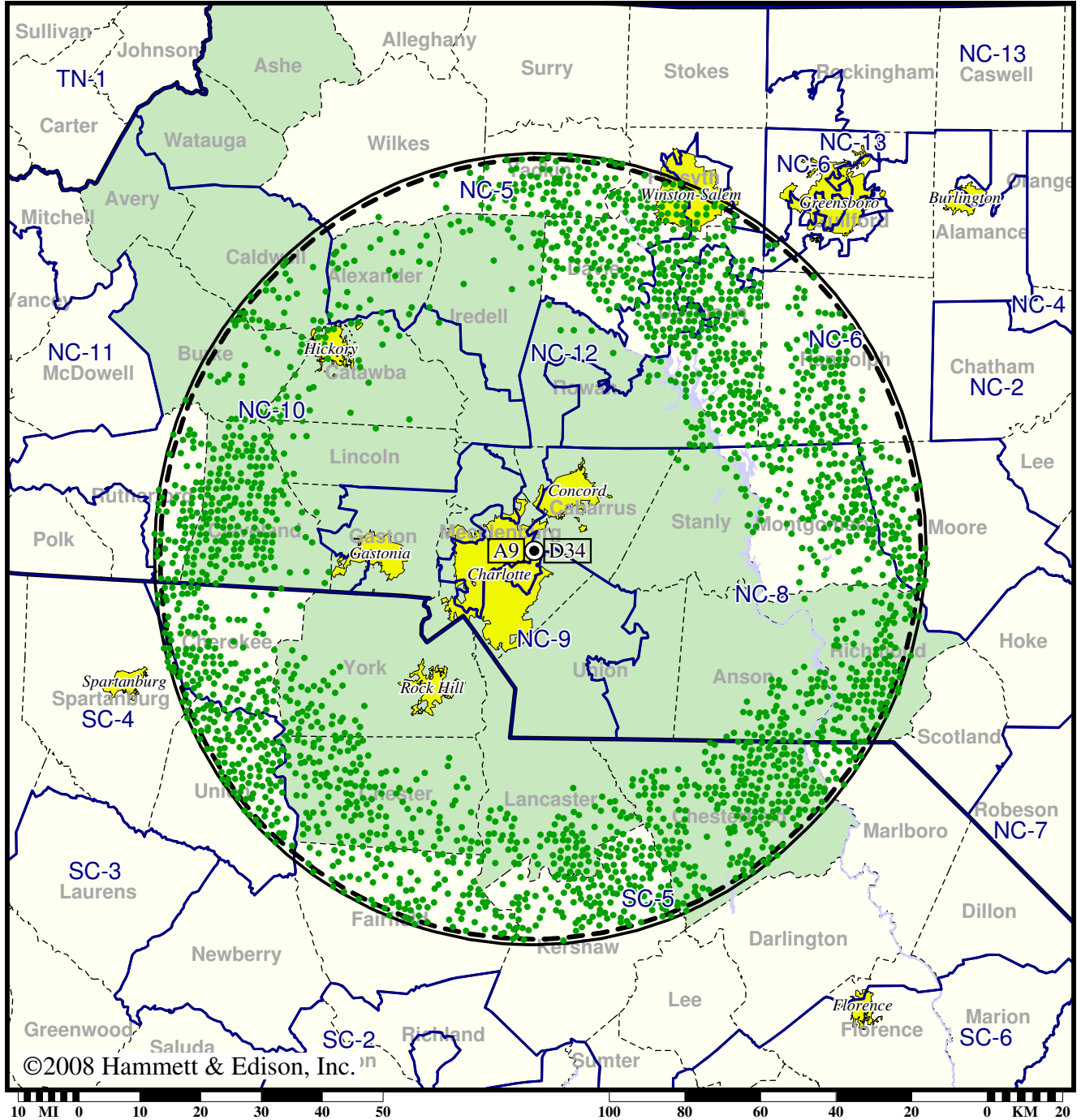


Station WSOC-TV • Analog Channel 9, DTV Channel 34 • Charlotte, NC

Expected Change In Coverage: Licensed Operation

Licensed (solid): 1000 kW ERP at 348 m HAAT, Network: ABC  
vs. Analog (dashed): 316 kW ERP at 364 m HAAT, Network: ABC

Market: Charlotte, NC



©2008 Hammett & Edison, Inc.

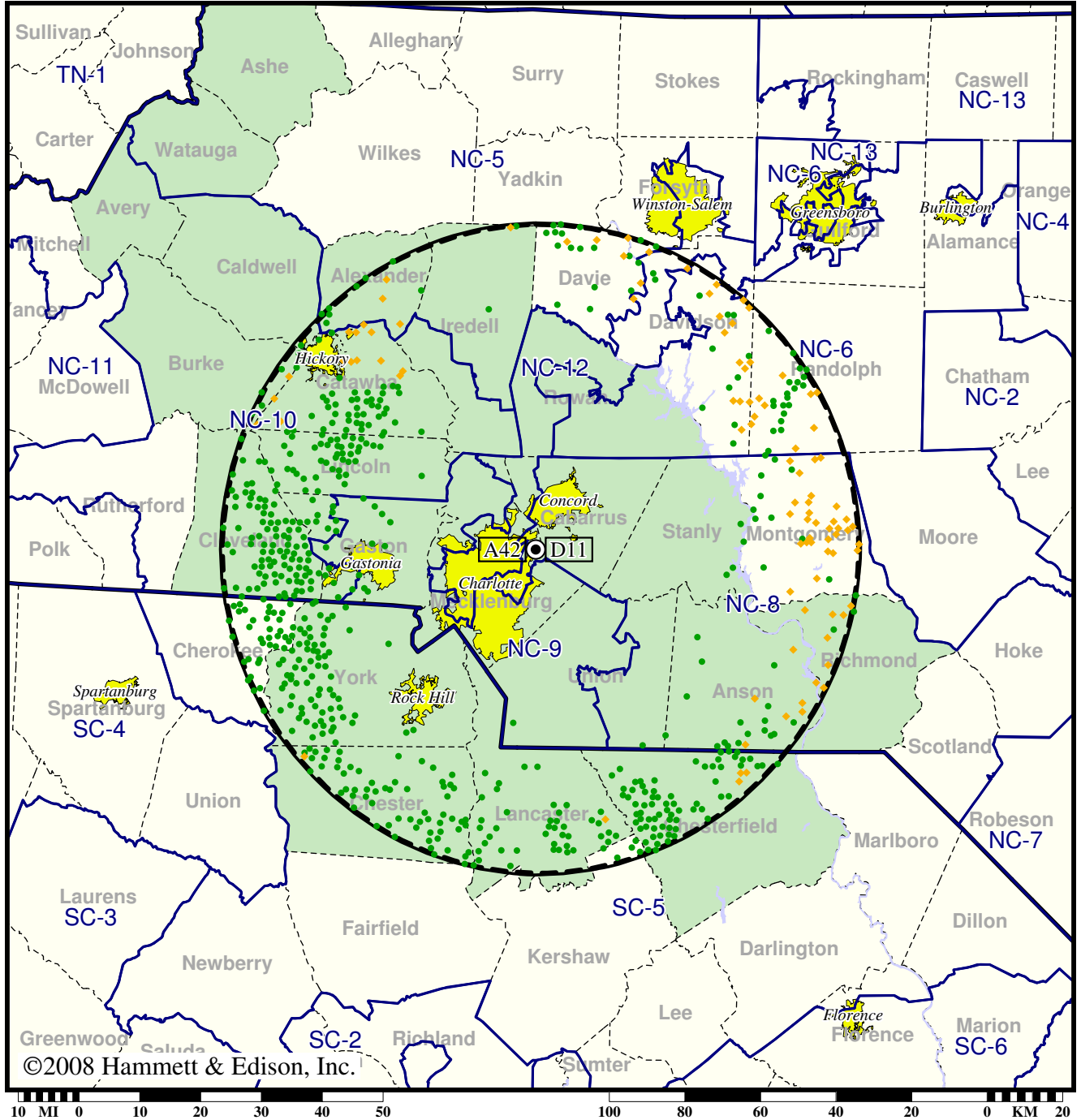
- Coverage gained after DTV transition
- (no symbol) No change in coverage

TV Station WTVI • Analog Channel 42, DTV Channel 11 • Charlotte, NC

Expected Change In Coverage: Licensed Operation

Licensed (solid): 2.20 kW ERP at 363 m HAAT, Network: PBS  
vs. Analog (dashed): 2750 kW ERP at 390 m HAAT, Network: PBS

Market: Charlotte, NC



©2008 Hammett & Edison, Inc.

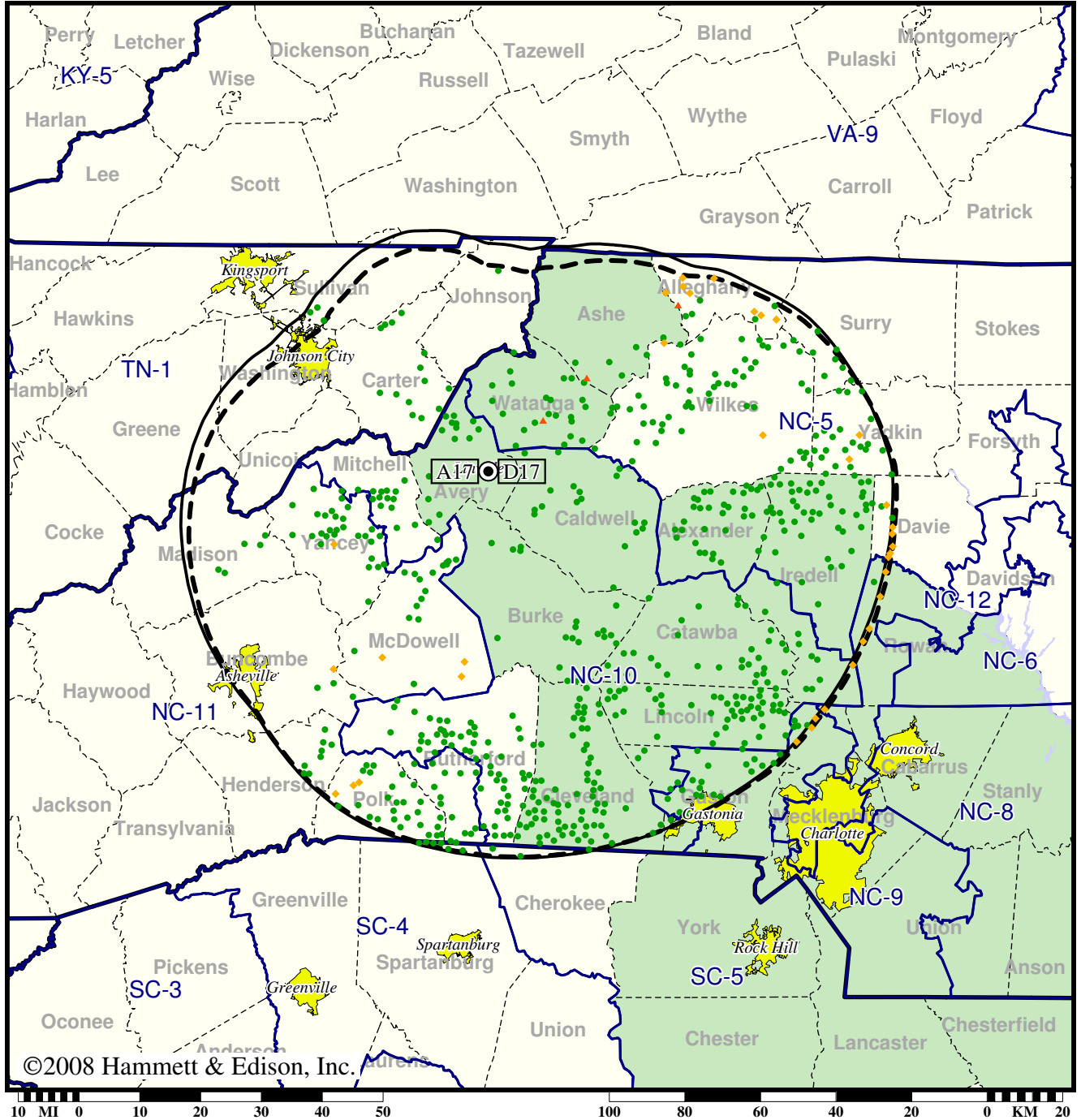
- Coverage gained after DTV transition
- (no symbol) No change in coverage
- ◆ Coverage lost but still served by same network

Station WUNE-TV • Analog Channel 17, DTV Channel 17 • Linville, NC

Expected Change In Coverage: Granted Construction Permit

CP (solid): 55.0 kW ERP at 546 m HAAT, Network: PBS  
vs. Analog (dashed): 1550 kW ERP at 546 m HAAT, Network: PBS

Market: Charlotte, NC



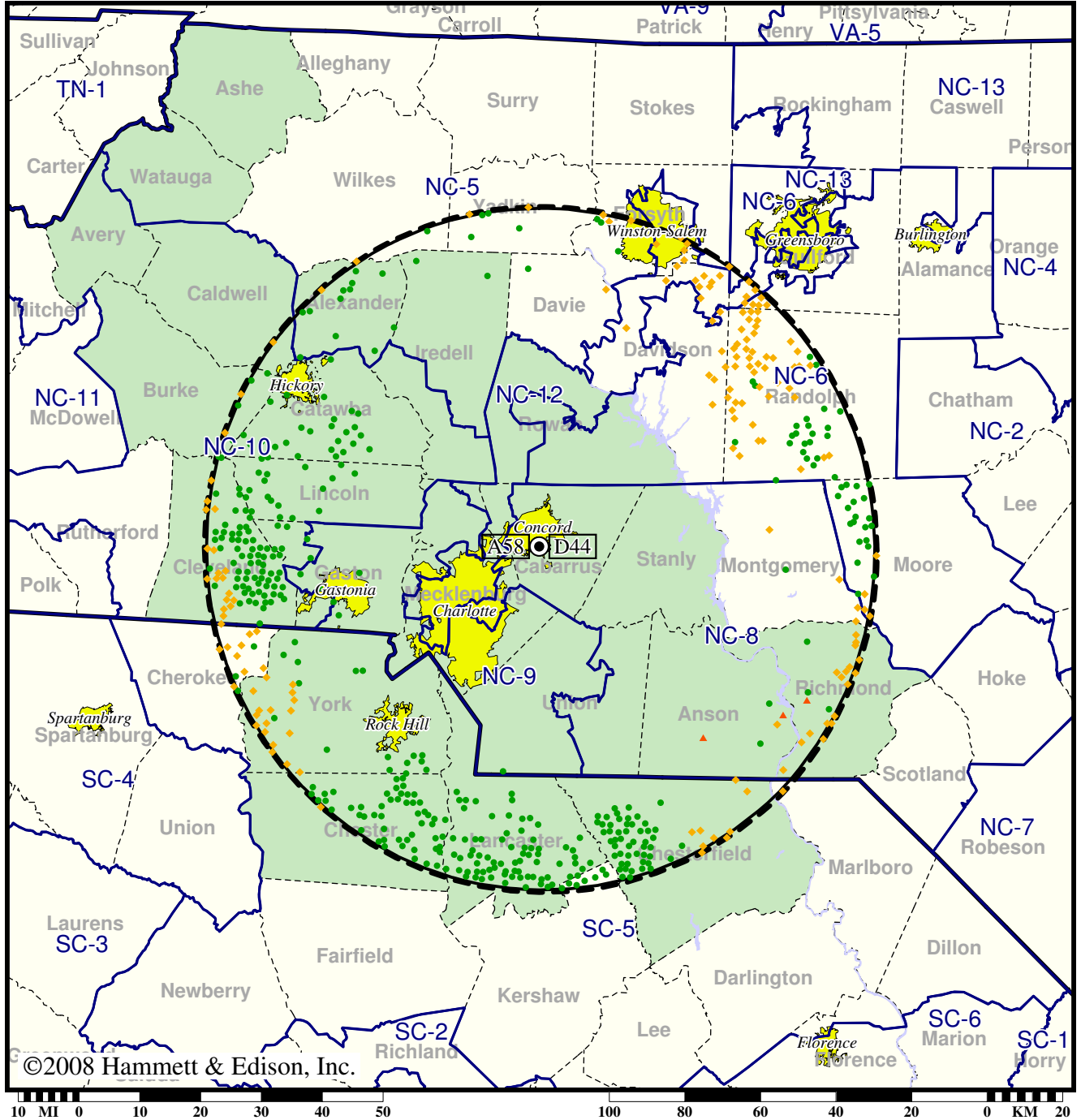
- Coverage gained after DTV transition
- (no symbol) No change in coverage
- ◆ Coverage lost but still served by same network
- ▲ Coverage lost and no other service by same network

Station WUNG-TV • Analog Channel 58, DTV Channel 44 • Concord, NC

Expected Change In Coverage: Licensed Operation

Licensed (solid): 150 kW ERP at 404 m HAAT, Network: PBS  
vs. Analog (dashed): 5000 kW ERP at 422 m HAAT, Network: PBS

Market: Charlotte, NC



- Coverage gained after DTV transition
- (no symbol) No change in coverage
- ◆ Coverage lost but still served by same network
- ▲ Coverage lost and no other service by same network