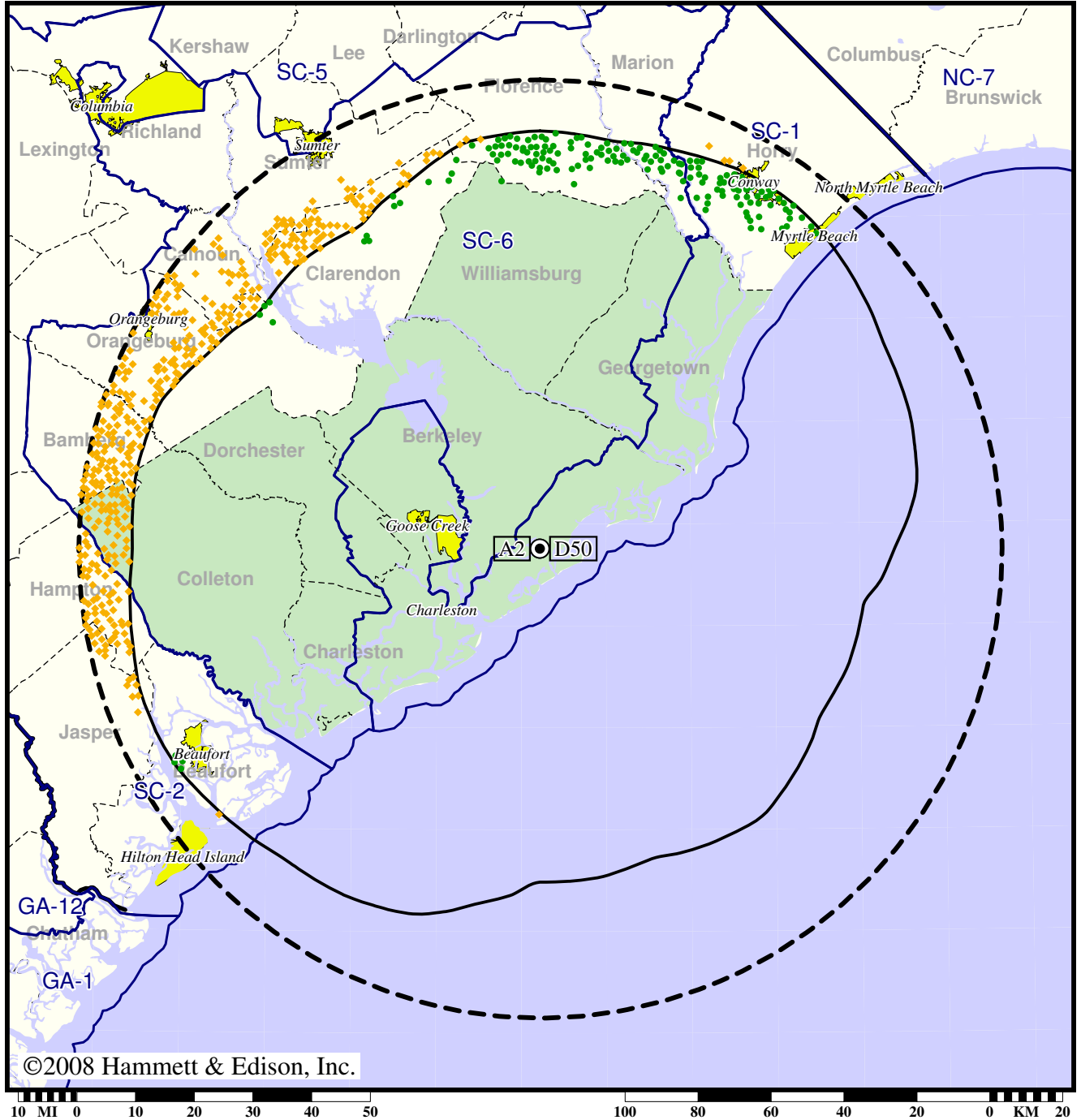


Station WCBD-TV • Analog Channel 2, DTV Channel 50 • Charleston, SC

Expected Change In Coverage: Post-Transition Appendix B Facility

Appendix B (solid): 1000 kW ERP at 581 m HAAT, Network: NBC  
vs. Analog (dashed): 100 kW ERP at 594 m HAAT, Network: NBC

Market: Charleston, SC



©2008 Hammett & Edison, Inc.

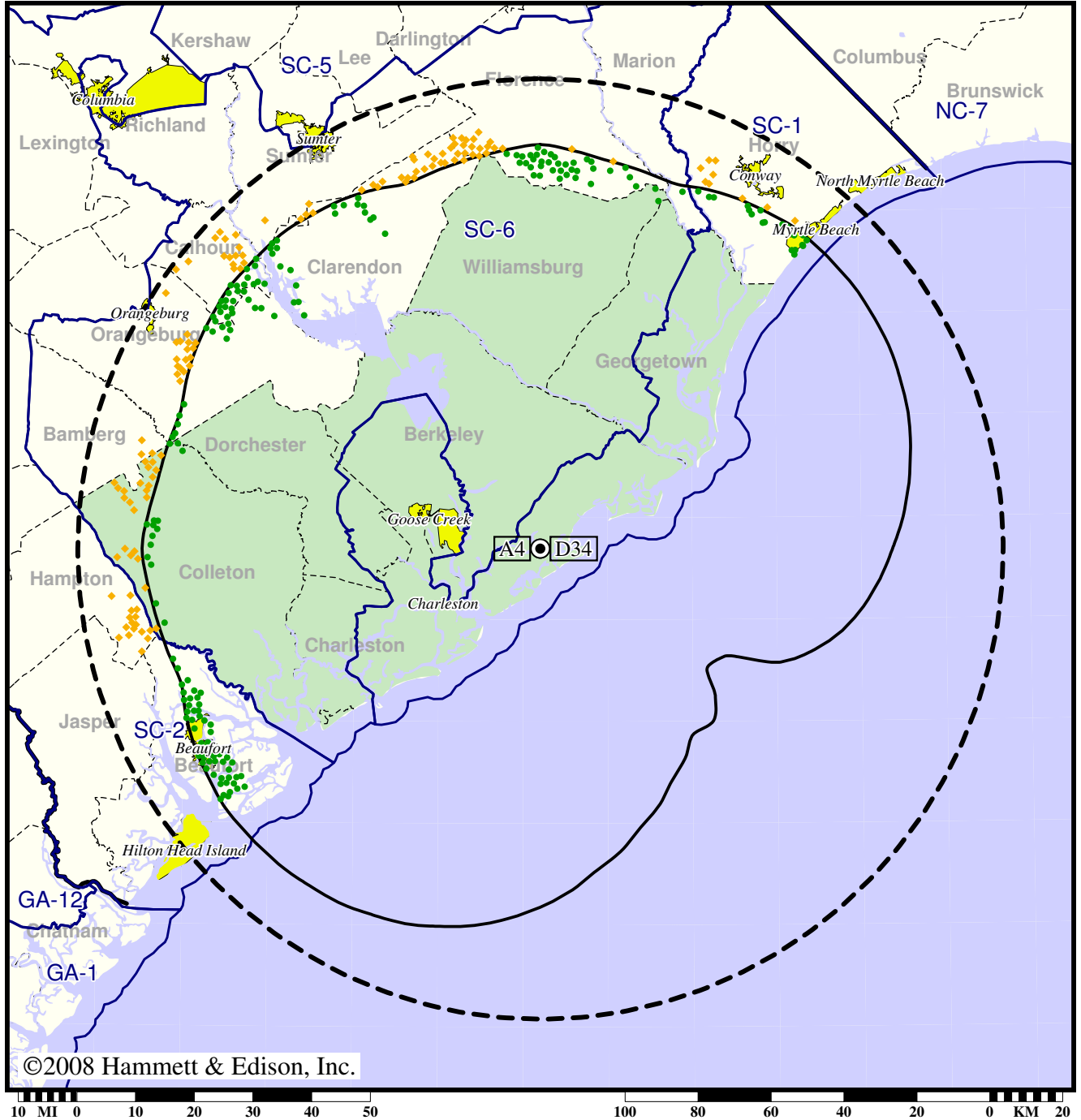
- Coverage gained after DTV transition
- (no symbol) No change in coverage
- ◆ Coverage lost but still served by same network

TV Station WCIV • Analog Channel 4, DTV Channel 34 • Charleston, SC

Expected Change In Coverage: Licensed Operation

Licensed (solid): 630 kW ERP at 522 m HAAT, Network: ABC  
vs. Analog (dashed): 100 kW ERP at 596 m HAAT, Network: ABC

Market: Charleston, SC



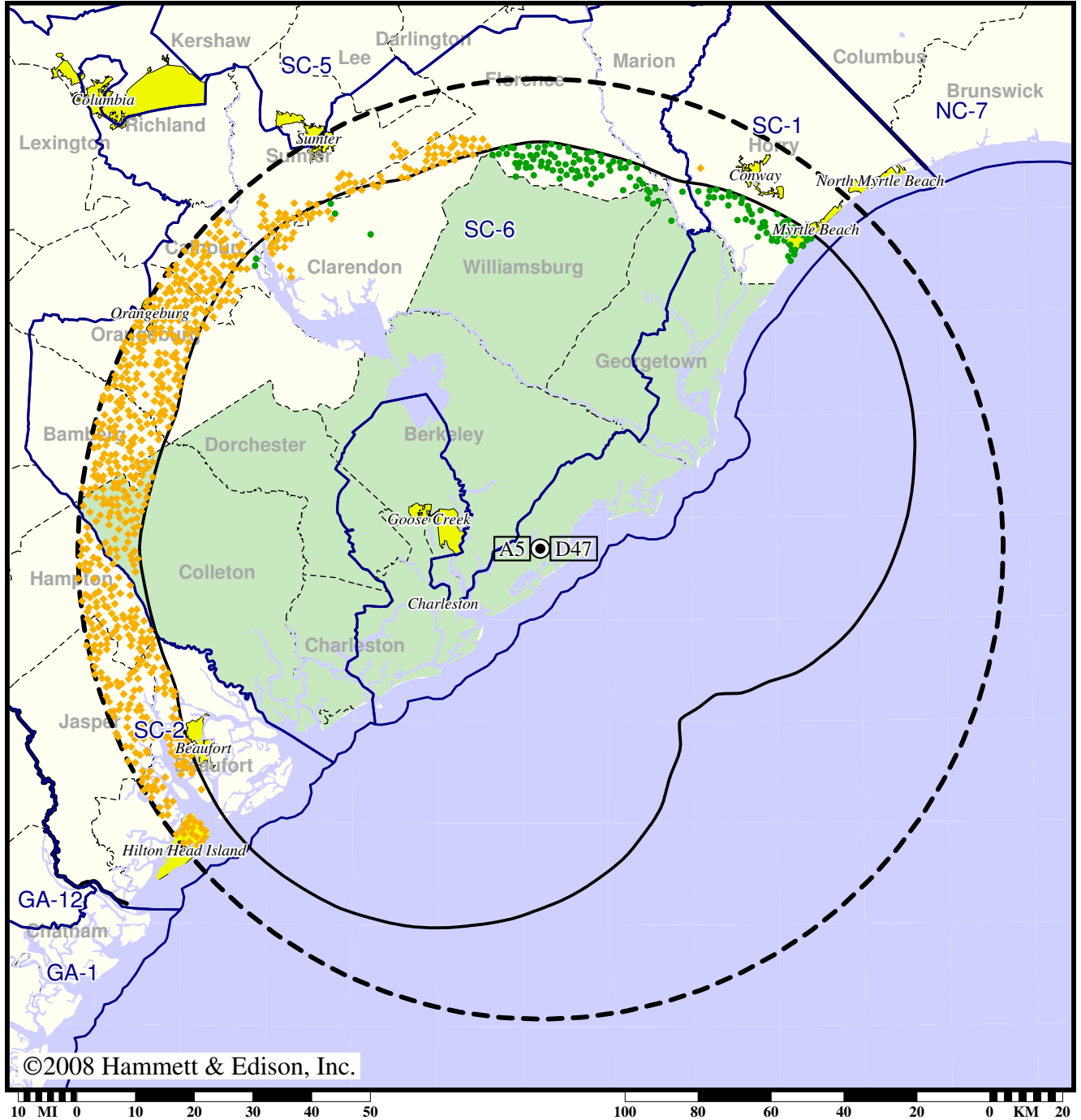
- Coverage gained after DTV transition
- (no symbol) No change in coverage
- ◆ Coverage lost but still served by same network

Station WCSC-TV • Analog Channel 5, DTV Channel 47 • Charleston, SC

Expected Change In Coverage: Licensed Operation

Licensed (solid): 1000 kW ERP at 521 m HAAT, Network: CBS  
vs. Analog (dashed): 100 kW ERP at 596 m HAAT, Network: CBS

Market: Charleston, SC



©2008 Hammett & Edison, Inc.

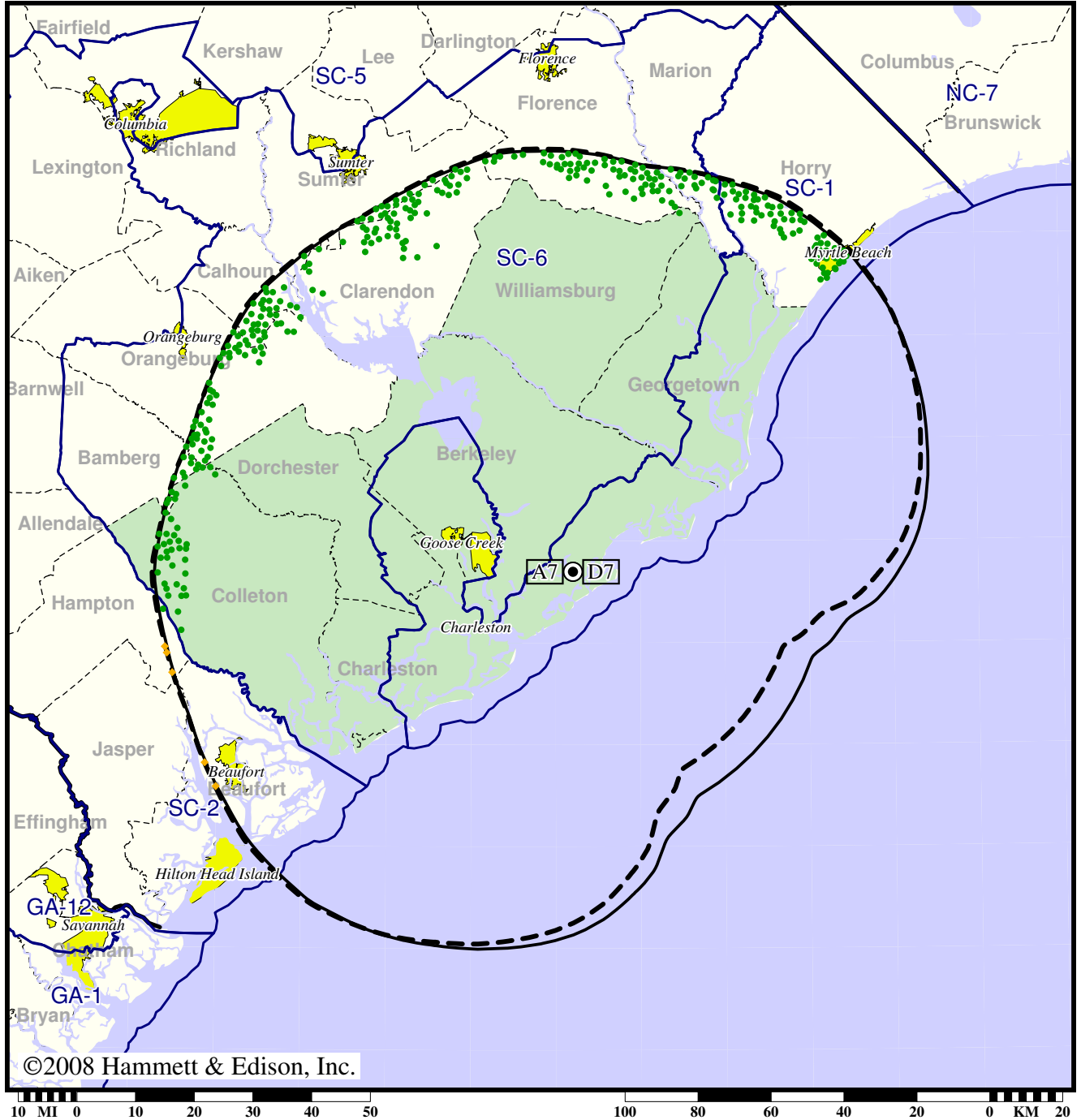
- Coverage gained after DTV transition
- (no symbol) No change in coverage
- ◆ Coverage lost but still served by same network

TV Station WITV • Analog Channel 7, DTV Channel 7 • Charleston, SC

Expected Change In Coverage: Granted Construction Permit

CP (solid): 20.0 kW ERP at 562 m HAAT, Network: PBS  
vs. Analog (dashed): 316 kW ERP at 564 m HAAT, Network: PBS

Market: Charleston, SC



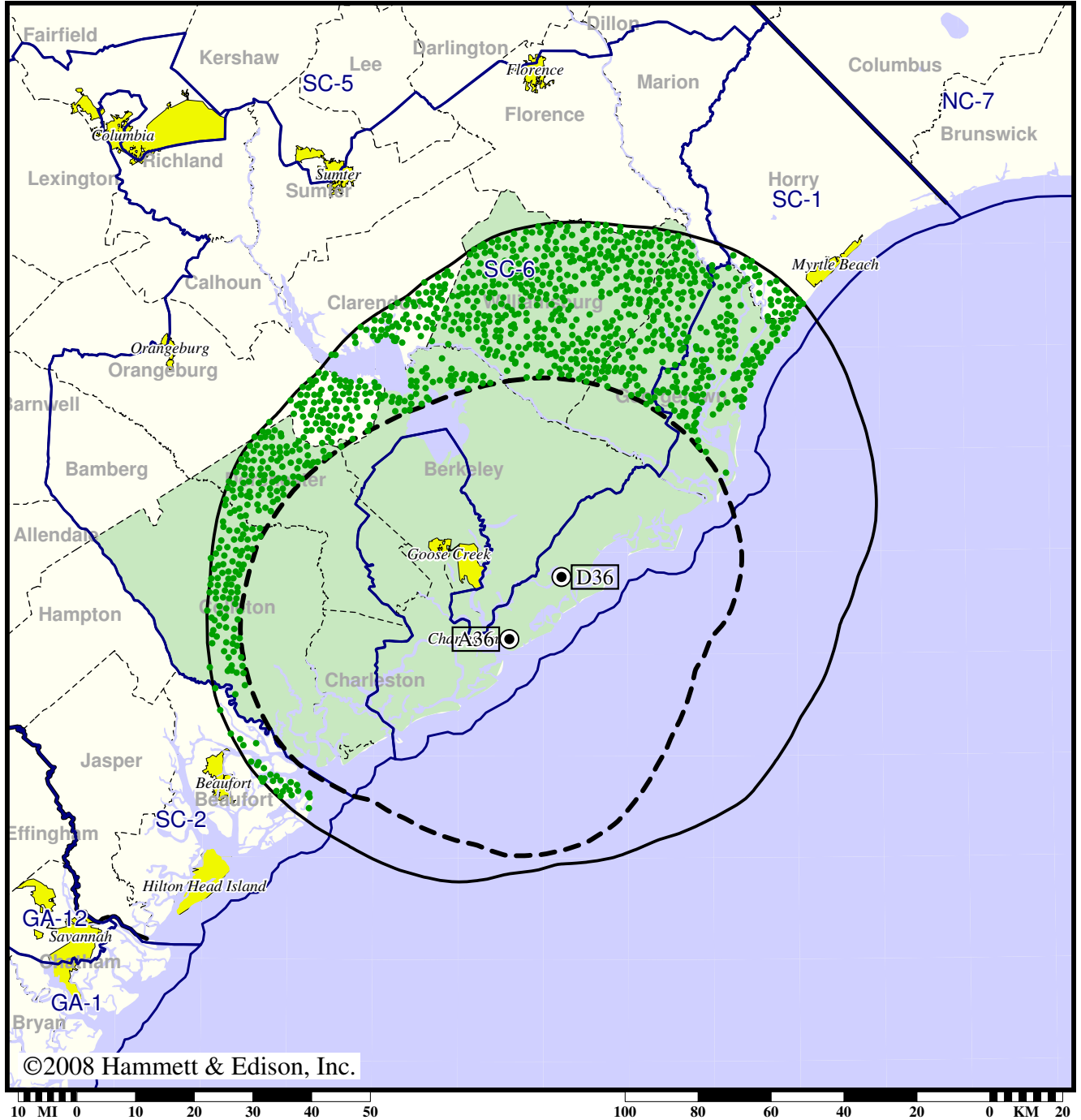
- Coverage gained after DTV transition
- (no symbol) No change in coverage
- ◆ Coverage lost but still served by same network

TV Station WMMP • Analog Channel 36, DTV Channel 36 • Charleston, SC

Expected Change In Coverage: Granted Construction Permit

CP (solid): 125 kW ERP at 583 m HAAT  
vs. Analog (dashed): 3310 kW ERP at 256 m HAAT

Market: Charleston, SC



©2008 Hammett & Edison, Inc.

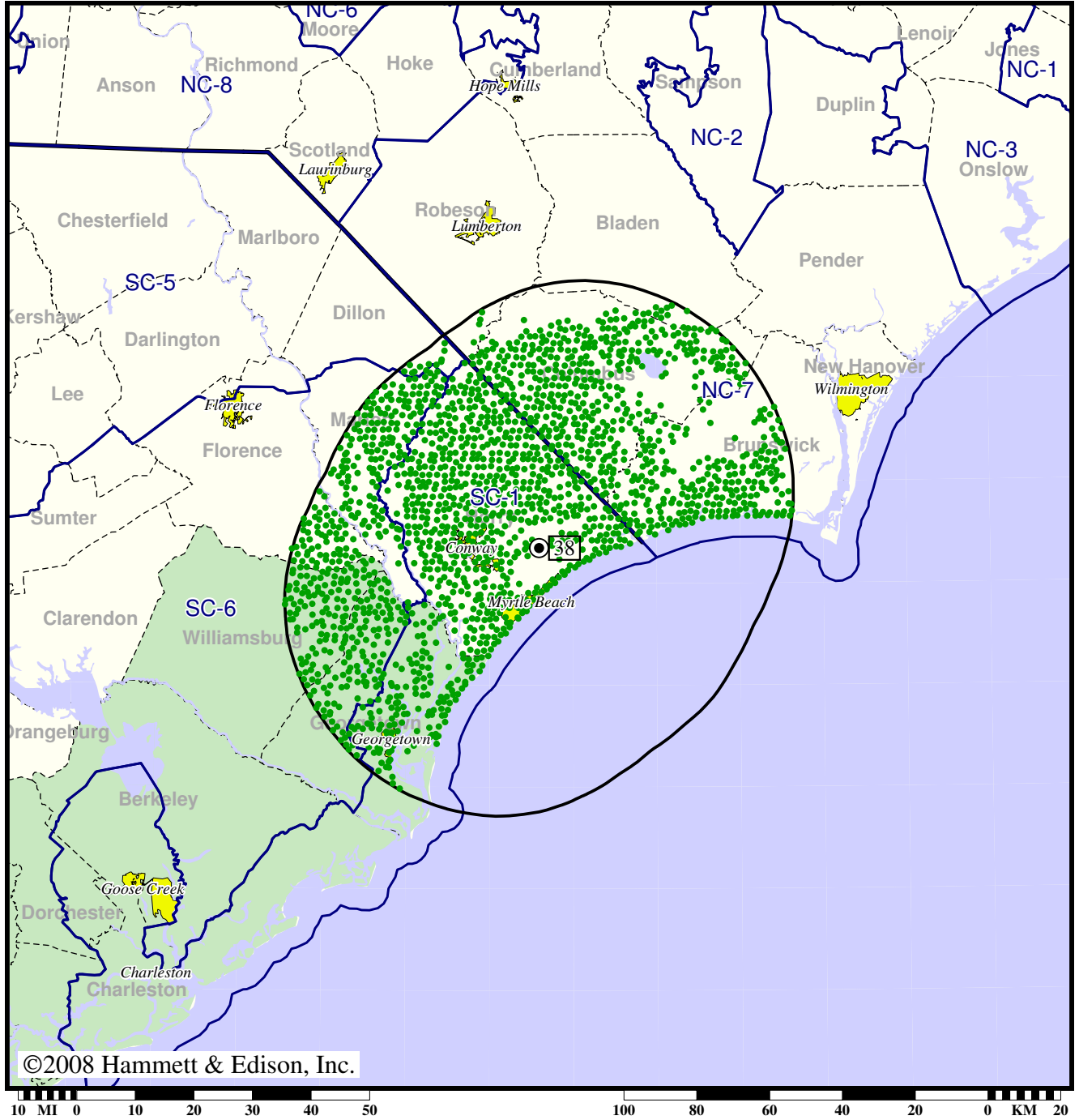
- Coverage gained after DTV transition
- (no symbol) No change in coverage

DTV Station WPJT-DT • Channel 38 • Georgetown, SC

Expected Change In Coverage: Post-Transition Appendix B Facility

Appendix B (solid): 500 kW ERP at 171 m HAAT

Market: Charleston, SC



©2008 Hammett & Edison, Inc.

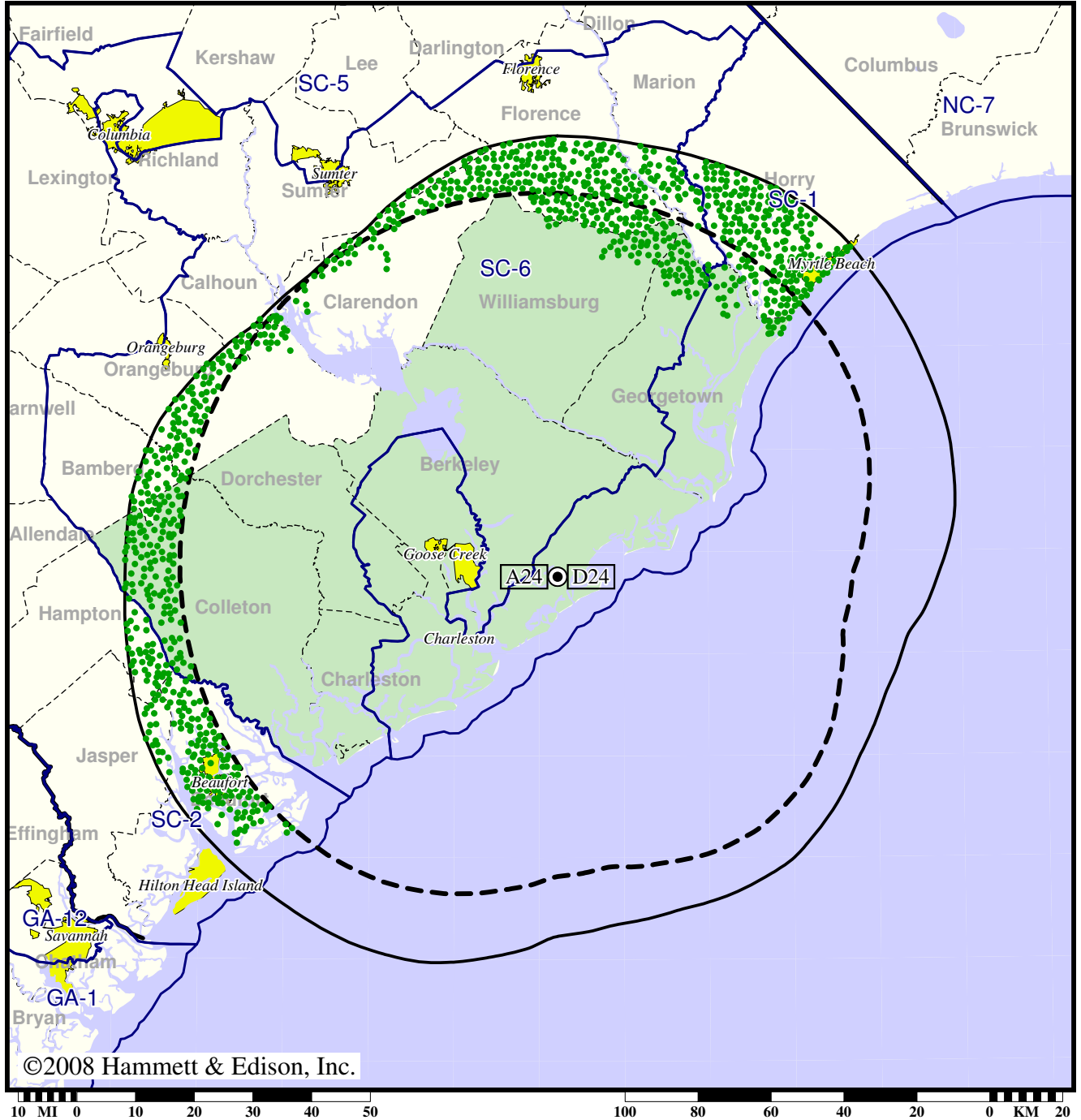
- Coverage gained after DTV transition
- (no symbol) No change in coverage

Station WTAT-TV • Analog Channel 24, DTV Channel 24 • Charleston, SC

Expected Change In Coverage: Granted Construction Permit

CP (solid): 1000 kW ERP at 583 m HAAT, Network: Fox  
vs. Analog (dashed): 5000 kW ERP at 542 m HAAT, Network: Fox

Market: Charleston, SC



● Coverage gained after DTV transition  
(no symbol) No change in coverage