

Content Domain	Main Topic	Cognitive Domain
MEASUREMENT	Attributes and Units	Knowing Facts and Procedures

Weight of an adult

Which of these could be the weight (mass) of an adult?

Ⓐ 1 kg

Ⓑ 6 kg

Ⓒ 60 kg

Ⓓ 600 kg

Item Number: M011023

Overall Percent Correct

Chinese Taipei	91	▲
Singapore	90	▲
Japan	89	▲
Latvia	89	▲
Lithuania	88	▲
Netherlands	87	▲
Russian Federation	87	▲
Hungary	86	▲
Italy	82	▲
Hong Kong, SAR	81	▲
Moldova, Republic of	81	▲
Belgium (Flemish)	80	▲
Australia	79	▲
New Zealand	78	▲
Norway	78	▲
Armenia	76	▲
Cyprus	76	▲
International average	72	
Slovenia	61	▼
United States	54	▼
England	54	▼
Scotland	50	▼
Iran, Islamic Republic of	45	▼
Morocco	44	▼
Philippines	36	▼
Tunisia	32	▼

Country average vs.
International average:

Higher	▲
Not different	○
Lower	▼

Correct Response:

C

Content Domain	Main Topic	Cognitive Domain
MEASUREMENT	Attributes and Units	Knowing Facts and Procedures

Units to measure mass of egg

What units would be best to use to measure the weight (mass) of an egg?

(A) centimeters
 (B) milliliters
 (C) grams
 (D) kilograms

Overall Percent Correct

Japan	91	▲
Netherlands	88	▲
Cyprus	83	▲
Lithuania	82	▲
Singapore	82	▲
Latvia	81	▲
England	80	▲
Belgium (Flemish)	80	▲
Hong Kong, SAR	78	▲
Italy	77	▲
Hungary	76	▲
Russian Federation	75	▲
Moldova, Republic of	74	▲
International average	69	
Chinese Taipei	68	○
Australia	67	○
New Zealand	67	○
Armenia	65	○
Norway	59	▼
Slovenia	59	▼
Scotland	55	▼
United States	54	▼
Iran, Islamic Republic of	50	▼
Morocco	47	▼
Tunisia	43	▼
Philippines	40	▼

Country average vs. International average:	
Higher	▲
Not different	○
Lower	▼

Item Number: M012023

Correct Response:	C
-------------------	---

Content Domain	Main Topic	Cognitive Domain
MEASUREMENT	Attributes and Units	Knowing Facts and Procedures

Which could equal 150 milliliters

Which of these could equal 150 milliliters?

Ⓐ The amount of water in a cup

Ⓑ The length of a kitten

Ⓒ The weight of an egg

Ⓓ The area of a coin

Overall Percent Correct

Chinese Taipei	87	▲
Hong Kong, SAR	86	▲
Lithuania	82	▲
Singapore	81	▲
Japan	75	▲
Hungary	74	▲
Russian Federation	72	▲
England	72	▲
Cyprus	71	▲
Latvia	69	▲
Belgium (Flemish)	69	▲
Italy	68	▲
Moldova, Republic of	68	▲
Slovenia	63	○
International average	61	
Australia	60	○
Scotland	60	○
Netherlands	59	○
New Zealand	55	▼
United States	48	▼
Armenia	41	▼
Norway	39	▼
Philippines	36	▼
Morocco	32	▼
Tunisia	28	▼
Iran, Islamic Republic of	25	▼

Country average vs. International average:

Higher	▲
Not different	○
Lower	▼

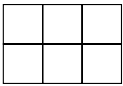
Item Number: M031338


Correct Response:	A
-------------------	---


Content Domain	Main Topic	Cognitive Domain
MEASUREMENT	Attributes and Units	Reasoning

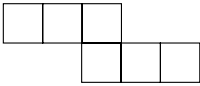
Which has largest area

Which of these figures has the largest area?

(A) 

(B) 

(C) 

(D) 

Item Number: M011005

Overall Percent Correct

Australia	85	▲
Chinese Taipei	96	▲
Japan	94	▲
Hong Kong, SAR	91	▲
Singapore	88	▲
Latvia	86	▲
Scotland	86	▲
Belgium (Flemish)	84	▲
Netherlands	83	▲
Russian Federation	82	○
Moldova, Republic of	81	○
United States	81	▲
Hungary	80	○
Lithuania	80	○
Armenia	79	○
Cyprus	79	○
Italy	79	○
New Zealand	79	○
England	78	○
International average	78	
Slovenia	77	○
Iran, Islamic Republic of	72	▼
Morocco	65	▼
Norway	65	▼
Tunisia	46	▼
Philippines	43	▼

Country average vs. International average:	
Higher	▲
Not different	○
Lower	▼

Correct Response: C

Content Domain	Main Topic	Cognitive Domain
MEASUREMENT	Attributes and Units	Solving Routine Problems

The length of the films

Simon wants to watch a film that is between $1\frac{1}{2}$ and 2 hours long.

Which of the following films should he choose?

- (A) a 59-minute film
- (B) a 102-minute film
- (C) a 121-minute film
- (D) a 150-minute film

Overall Percent Correct

Singapore	46	▲
England	42	▲
Hungary	41	▲
Netherlands	38	▲
Australia	37	▲
Hong Kong, SAR	37	▲
Russian Federation	37	▲
United States	34	▲
Belgium (Flemish)	33	○
Chinese Taipei	32	○
Lithuania	30	○
Slovenia	30	○
International average	30	
New Zealand	29	○
Norway	29	○
Scotland	28	○
Latvia	27	○
Italy	26	▼
Moldova, Republic of	26	○
Cyprus	25	▼
Japan	25	▼
Armenia	22	▼
Iran, Islamic Republic of	22	▼
Philippines	22	▼
Tunisia	17	▼
Morocco	16	▼

Country average vs.
International average:

Higher	▲
Not different	○
Lower	▼

Item Number: M031008

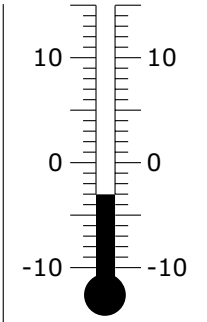
Correct Response:

B

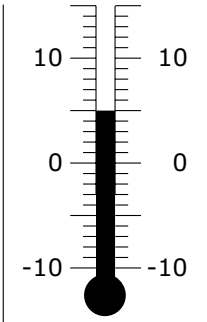
Content Domain	Main Topic	Cognitive Domain
MEASUREMENT	Tools, techniques, and formulas	Knowing Facts and Procedures

How much did temperature rise

When Tracy left for school, the temperature was minus 3 degrees.



At recess, the temperature was 5 degrees.



How many degrees did the temperature rise?

Overall Percent Correct

Netherlands	78	▲
England	76	▲
Belgium (Flemish)	76	▲
Hungary	74	▲
Japan	71	▲
Latvia	70	▲
Italy	66	▲
Norway	65	▲
Lithuania	63	▲
Russian Federation	63	▲
Chinese Taipei	60	○
Scotland	59	○
Hong Kong, SAR	58	○
International average	57	
Cyprus	55	○
Moldova, Republic of	55	○
Slovenia	54	○
Singapore	53	▼
United States	52	▼
Armenia	51	▼
New Zealand	49	▼
Australia	46	▼
Iran, Islamic Republic of	46	▼
Philippines	44	▼
Morocco	29	▼
Tunisia	27	▼

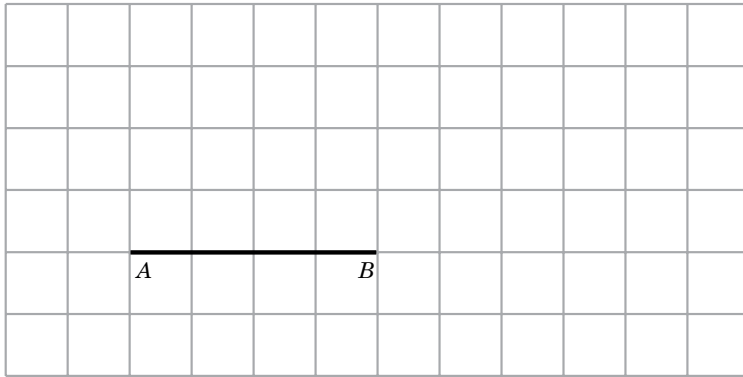
Country average vs. International average:	
Higher	▲
Not different	○
Lower	▼

Item Number: M011013

Correct Response:	D
-------------------	---

Content Domain	Main Topic	Cognitive Domain
MEASUREMENT	Tools, techniques, and formulas	Knowing Facts and Procedures

Draw a triangle with AB as the base



Draw a triangle in the grid so that the line AB is the base of the triangle and the two new sides are the same length as each other.

Overall Percent Correct

Hong Kong, SAR	95	▲
Latvia	84	▲
Japan	80	▲
New Zealand	80	▲
Australia	77	▲
Italy	77	▲
Russian Federation	77	▲
Singapore	77	▲
Belgium (Flemish)	77	▲
Lithuania	74	▲
England	73	▲
Hungary	72	▲
Scotland	71	○
Chinese Taipei	70	○
Moldova, Republic of	67	○
International average	67	
Slovenia	64	○
United States	63	▼
Norway	58	▼
Cyprus	57	▼
Armenia	56	▼
Iran, Islamic Republic of	48	▼
Philippines	45	▼
Morocco	42	▼
Tunisia	28	▼
Netherlands	0	▼

Country average vs. International average:

- Higher ▲
- Not different ○
- Lower ▼

Item Number: M031322

SCORING

Correct Response

- Triangle with two new sides equal (i.e. meeting on or within 2mm of the gridline that is the perpendicular bisector of AB)

Incorrect Response

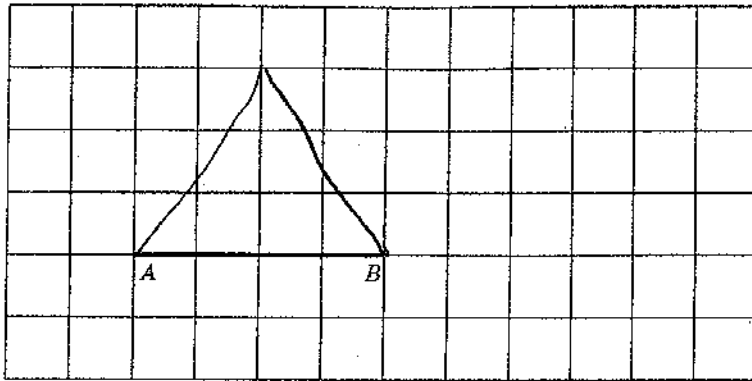
- Triangle with two new sides unequal
- Other incorrect (including crossed out/erased, stray marks, illegible, or off task)

Draw a triangle with AB as the base (continued)

Item Number: M031322

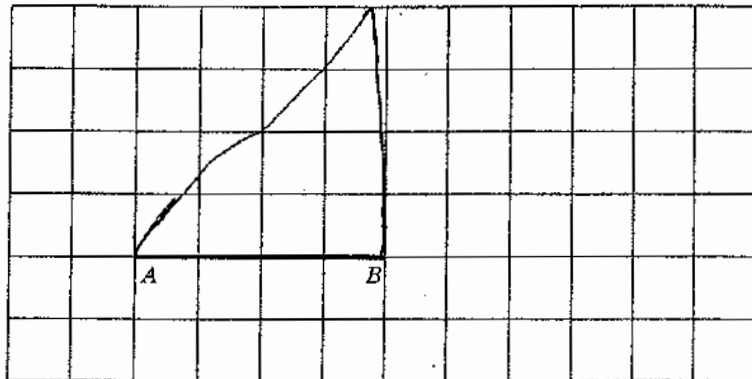
Student Responses

Correct Response:



Draw a triangle in the grid so that the line AB is the base of the triangle and the two new sides are the same length as each other.

Incorrect Response:



Draw a triangle in the grid so that the line AB is the base of the triangle and the two new sides are the same length as each other.

Content Domain	Main Topic	Cognitive Domain
MEASUREMENT	Tools, Techniques, and Formulas	Reasoning

Distance on map

One centimeter on the map represents 8 kilometers on the land.

About how far apart are Oxford and Smithville on the land?

Ⓐ 4 km
 Ⓑ 16 km
 Ⓒ 35 km
 Ⓓ 50 km

Item Number: M012065

Overall Percent Correct

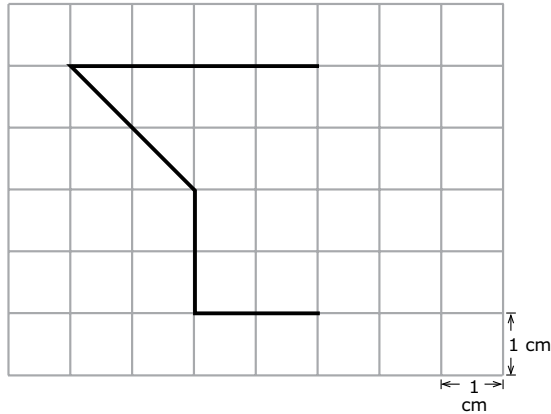
Netherlands	69	▲
Singapore	62	▲
Japan	61	▲
Belgium (Flemish)	61	▲
Hong Kong, SAR	60	▲
Lithuania	59	▲
Latvia	57	▲
Hungary	55	▲
Russian Federation	52	▲
England	51	▲
Chinese Taipei	49	▲
Australia	46	○
New Zealand	45	○
International average	45	
Italy	44	○
Moldova, Republic of	44	○
United States	41	▼
Slovenia	38	▼
Cyprus	37	▼
Norway	36	▼
Scotland	35	▼
Armenia	33	▼
Morocco	26	▼
Iran, Islamic Republic of	21	▼
Tunisia	21	▼
Philippines	20	▼

Country average vs. International average:	
Higher	▲
Not different	○
Lower	▼

Correct Response:	C
-------------------	---

Content Domain	Main Topic	Cognitive Domain
MEASUREMENT	Tools, Techniques, and Formulas	Reasoning

Complete the figure with an area of 13 cm²



The squares in the grid above have areas of 1 square centimeter. Draw lines to complete the figure so that it has an area of 13 square centimeters.

Overall Percent Correct

Japan	68	▲
Chinese Taipei	66	▲
Hong Kong, SAR	52	▲
Latvia	43	▲
Singapore	43	▲
Lithuania	40	▲
Netherlands	37	▲
Moldova, Republic of	35	▲
Cyprus	34	▲
Russian Federation	30	○
Australia	29	○
England	29	○
Scotland	29	○

International average 29

Belgium (Flemish)	28	○
Hungary	26	○
Armenia	25	○
United States	24	▼
Italy	22	▼
New Zealand	15	▼
Iran, Islamic Republic of	11	▼
Slovenia	11	▼
Norway	10	▼
Morocco	9	▼
Tunisia	9	▼
Philippines	5	▼

Country average vs. International average:

Higher	▲
Not different	○
Lower	▼

Item Number: M031298

SCORING

Correct Response

- Lines drawn to give area of 13 square cm

Incorrect Response

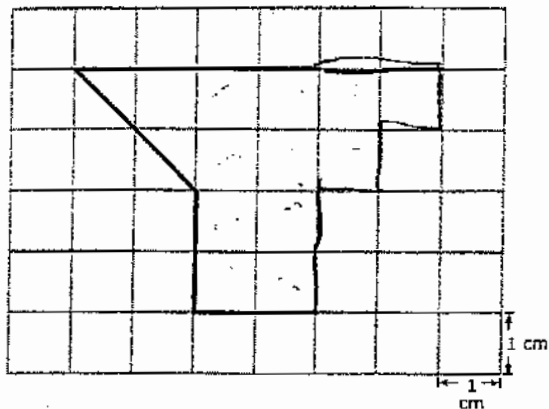
- Error due to counting half squares as full square centimeters
- One line drawn to close given figure
- Symmetrical figure drawn
- Other incorrect (including crossed out/erased, stray marks, illegible, or off task)

Complete the figure with an area of 13 cm² (continued)

Item Number: M031298

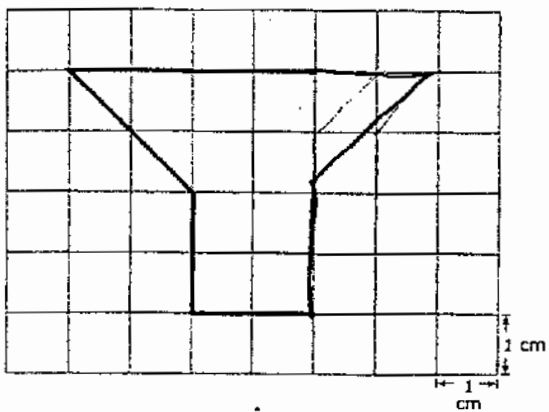
Student Responses

Correct Response:



The squares in the grid above have areas of 1 square centimeter. Draw lines to complete the figure so that it has an area of 13 square centimeters.

Incorrect Response:



The squares in the grid above have areas of 1 square centimeter. Draw lines to complete the figure so that it has an area of 13 square centimeters.

Content Domain	Main Topic	Cognitive Domain
MEASUREMENT	Tools, Techniques, and Formulas	Solving Routine Problems

When is Mary’s trip

Here is a calendar for December.

DECEMBER						
S	M	T	W	T	F	S
			1	2	3	4
5	6	7	8	9	10	11
12	13	14	15	16	17	18
19	20	21	22	23	24	25
26	27	28	29	30	31	

Mary’s birthday is on Thursday, December 2. She is going on a trip exactly 3 weeks later. On what date will she go on the trip?

- (A) December 16th
- (B) December 21st
- (C) December 23rd
- (D) December 30th

Item Number: M011017

Overall Percent Correct

Japan	83	▲
England	82	▲
Belgium (Flemish)	81	▲
Netherlands	79	▲
Scotland	79	▲
Hong Kong, SAR	76	▲
Australia	75	▲
Chinese Taipei	75	▲
Singapore	75	▲
United States	75	▲
New Zealand	74	▲
Latvia	69	▲
Hungary	67	○
Russian Federation	67	○
Italy	66	○
Slovenia	66	○
Lithuania	65	○
Moldova, Republic of	64	○
International average	64	
Norway	62	○
Cyprus	61	○
Armenia	51	▼
Philippines	36	▼
Iran, Islamic Republic of	31	▼
Morocco	26	▼
Tunisia	25	▼

Country average vs. International average:

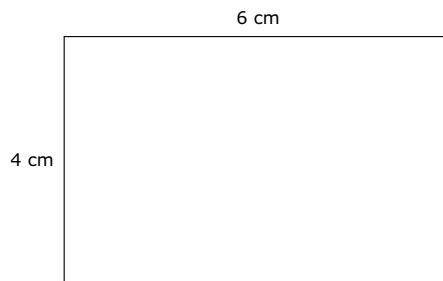
- Higher ▲
- Not different ○
- Lower ▼

Correct Response:	C
-------------------	---

Content Domain	Main Topic	Cognitive Domain
MEASUREMENT	Tools, Techniques, and Formulas	Solving Routine Problems

Perimeter of rectangle

Here is a rectangle with length 6 centimeters and width 4 centimeters. The distance right around its shape is called its perimeter.



Which of these gives the perimeter of the rectangle in centimeters?

- (A) $6 + 4$
- (B) 6×4
- (C) $6 \times 4 \times 2$
- (D) $6 + 4 + 6 + 4$

Overall Percent Correct

Singapore	93	▲
Latvia	77	▲
Lithuania	73	▲
Russian Federation	72	▲
Armenia	66	▲
United States	64	▲
Hong Kong, SAR	62	▲
Moldova, Republic of	62	▲
Belgium (Flemish)	61	▲
Australia	57	▲
Hungary	57	▲
Italy	57	▲
Cyprus	53	○
England	52	○
International average	51	
Chinese Taipei	42	▼
New Zealand	39	▼
Norway	39	▼
Philippines	39	▼
Scotland	36	▼
Netherlands	35	▼
Iran, Islamic Republic of	34	▼
Slovenia	33	▼
Japan	25	▼
Tunisia	25	▼
Morocco	21	▼

Country average vs.
International average:

Higher	▲
Not different	○
Lower	▼

Item Number: M011025

Correct Response:

D

Content Domain	Main Topic	Cognitive Domain
MEASUREMENT	Tools, Techniques, and Formulas	Solving Routine Problems

Betty's average driving speed

The distance from one town to another is 180 km. If Betty has to drive the distance in 3 hours, what must her average speed be in kilometers per hour?

- (A) 180×3
- (B) $180 + 3$
- (C) $180 \div 3$
- (D) $180 - 3$

Overall Percent Correct

Hong Kong, SAR	83	▲
Latvia	80	▲
Russian Federation	74	▲
Chinese Taipei	73	▲
Japan	73	▲
Lithuania	65	▲
Netherlands	62	▲
Singapore	59	▲
Belgium (Flemish)	56	▲
Armenia	54	▲
Hungary	53	○
Moldova, Republic of	53	○
International average	48	
Cyprus	39	▼
Slovenia	37	▼
United States	37	▼
England	36	▼
Italy	34	▼
New Zealand	32	▼
Australia	31	▼
Norway	30	▼
Scotland	29	▼
Tunisia	28	▼
Morocco	27	▼
Iran, Islamic Republic of	26	▼
Philippines	25	▼

Country average vs.
International average:

Higher	▲
Not different	○
Lower	▼

Item Number: M031097

Correct Response:

C

Content Domain	Main Topic	Cognitive Domain
MEASUREMENT	Tools, Techniques, and Formulas	Solving Routine Problems

George practiced soccer 6 days a week

George practiced soccer six days a week.
 For 3 of the days he practiced for 45 minutes each day.
 For 3 of the days he practiced for 20 minutes each day.

In hours and minutes, what is the total amount of time George practiced on these six days?

(A) 2 hours 20 minutes
 (B) 2 hours 55 minutes
 (C) 3 hours 5 minutes
 (D) 3 hours 15 minutes

Overall Percent Correct

Singapore	64	▲
Chinese Taipei	61	▲
Russian Federation	57	▲
Japan	53	▲
Lithuania	53	▲
Hong Kong, SAR	50	▲
Latvia	49	▲
Hungary	44	▲
England	42	○
Belgium (Flemish)	41	○
International average	37	
United States	36	○
Moldova, Republic of	35	○
Armenia	34	○
Australia	33	○
Italy	33	○
Netherlands	33	○
Slovenia	32	○
Cyprus	31	▼
New Zealand	28	▼
Scotland	27	▼
Norway	24	▼
Morocco	17	▼
Philippines	15	▼
Iran, Islamic Republic of	13	▼
Tunisia	11	▼

Country average vs. International average:

Higher	▲
Not different	○
Lower	▼

Item Number: M031178

Correct Response:	D
-------------------	---

Content Domain	Main Topic	Cognitive Domain
MEASUREMENT	Tools, Techniques, and Formulas	Using Concepts

Volume of stack of cubes

Jasmine made a stack of cubes of the same size. The stack had 5 layers and each layer had 10 cubes. What is the volume of the stack?

Ⓐ 5 cubes
 Ⓑ 15 cubes
 Ⓒ 30 cubes
 Ⓓ 50 cubes

Item Number: M011010

Overall Percent Correct

Chinese Taipei	93	▲
Hong Kong, SAR	91	▲
Netherlands	85	▲
Singapore	85	▲
Russian Federation	82	▲
Lithuania	80	▲
Latvia	79	▲
Belgium (Flemish)	75	▲
Japan	73	▲
Moldova, Republic of	70	▲
Italy	67	○
United States	67	▲
England	65	○
Hungary	64	○
International average	63	
Australia	61	○
Cyprus	61	○
Scotland	60	○
New Zealand	56	▼
Armenia	53	▼
Slovenia	53	▼
Norway	46	▼
Iran, Islamic Republic of	36	▼
Morocco	29	▼
Tunisia	28	▼
Philippines	26	▼

Country average vs.
International average:

Higher	▲
Not different	○
Lower	▼

Correct Response:

D

Content Domain	Main Topic	Cognitive Domain
NUMBER	Fractions and Decimals	Knowing Facts and Procedures

Sum of two numbers with decimals

What is the sum of 2.5 and 3.8?

- (A) 5.3
- (B) 6.3
- (C) 6.4
- (D) 9.5

Overall Percent Correct

Singapore	97	▲
Chinese Taipei	97	▲
Japan	96	▲
Belgium (Flemish)	91	▲
Lithuania	87	▲
Hong Kong, SAR	86	▲
Netherlands	85	▲
Italy	77	▲
England	73	▲
United States	72	▲
Russian Federation	72	○
Hungary	72	▲
Moldova, Republic of	69	○
Latvia	69	○
International average	67	
Armenia	67	○
Philippines	62	▼
Australia	58	▼
Scotland	55	▼
Cyprus	52	▼
New Zealand	49	▼
Slovenia	48	▼
Norway	45	▼
Morocco	42	▼
Iran, Islamic Republic of	37	▼
Tunisia	31	▼

**Country average vs.
International average:**

Higher	▲
Not different	○
Lower	▼

Item Number: M011008

Correct Response:

B

Content Domain	Main Topic	Cognitive Domain
NUMBER	Fractions and Decimals	Knowing Facts and Procedures

Subtraction with decimals

Subtract: 4.03
 -1.15

(A) 5.18
(B) 4.45
(C) 3.12
(D) 2.98
(E) 2.88

Item Number: M011015

Overall Percent Correct

Singapore	94	▲
Hong Kong, SAR	84	▲
Chinese Taipei	83	▲
Russian Federation	81	▲
Latvia	79	▲
Armenia	74	▲
Italy	74	▲
Lithuania	73	▲
Japan	72	▲
Moldova, Republic of	72	▲
United States	72	▲
Belgium (Flemish)	71	▲
Netherlands	69	▲
Cyprus	65	○
Hungary	63	○
International average	61	
Scotland	51	▼
Tunisia	47	▼
Slovenia	44	▼
England	43	▼
Morocco	41	▼
Philippines	40	▼
Iran, Islamic Republic of	38	▼
Norway	38	▼
Australia	35	▼
New Zealand	28	▼

Country average vs.
International average:

Higher	▲
Not different	○
Lower	▼

Correct Response:

E

Content Domain	Main Topic	Cognitive Domain
NUMBER	Fractions and Decimals	Knowing Facts and Procedures

Fraction to decimal

Which of these means $\frac{7}{10}$?

(A) 70
 (B) 7
 (C) 0.7
 (D) 0.07

Overall Percent Correct

Singapore	95	▲
Hong Kong, SAR	78	▲
Chinese Taipei	74	▲
Belgium (Flemish)	73	▲
Cyprus	65	▲
United States	62	▲
Japan	60	▲
Italy	58	▲
Moldova, Republic of	52	▲
Philippines	49	▲
Lithuania	48	▲
England	46	○
International average	43	
Australia	42	○
Armenia	42	○
Russian Federation	39	○
New Zealand	37	▼
Netherlands	29	▼
Morocco	23	▼
Scotland	22	▼
Hungary	17	▼
Norway	17	▼
Iran, Islamic Republic of	16	▼
Tunisia	15	▼
Latvia	12	▼
Slovenia	8	▼

Country average vs. International average:	
Higher	▲
Not different	○
Lower	▼

Item Number: M011020

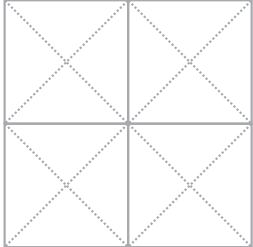
Correct Response:	C
-------------------	---

Content Domain	Main Topic	Cognitive Domain
A. NUMBER B. NUMBER	Fractions and Decimals Fractions and Decimals	Knowing Facts and Procedures Reasoning

Geometry Tiles: ½ black

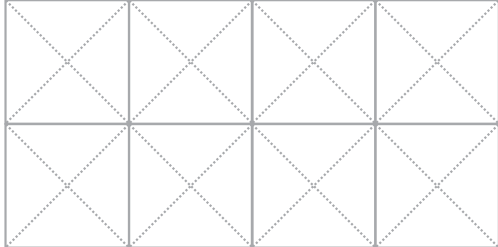
A. WITHOUT using any triangle tiles, place 4 tiles so that $\frac{1}{2}$ of a square shape is black. Then shade in the square below to show what you did with your tiles.

Shade in Here



B. Place 8 tiles so that $\frac{5}{8}$ of the rectangle shape is black. Then shade in the rectangle below to show what you did with your tiles.

Shade in Here



Item Number: M031348A

SCORING

Correct Response

- Draws a pattern made up of 2 black tiles and two white tiles. See examples below.



Incorrect Response

- Other incorrect (including crossed out/erased, stray marks, illegible, or off task)

Overall Percent Correct

Singapore	56	▲
Belgium (Flemish)	51	▲
England	49	▲
United States	48	▲
Netherlands	46	▲
Japan	45	▲
New Zealand	44	▲
Hong Kong, SAR	43	▲
Australia	42	▲
Cyprus	39	▲
Hungary	39	○
Latvia	37	▲
Scotland	36	○
Lithuania	35	○
International average	33	
Chinese Taipei	32	○
Russian Federation	32	○
Norway	31	○
Italy	30	○
Moldova, Republic of	28	▼
Slovenia	24	▼
Philippines	16	▼
Armenia	11	▼
Iran, Islamic Republic of	7	▼
Morocco	4	▼
Tunisia	4	▼

Country average vs. International average:

Higher	▲
Not different	○
Lower	▼

Geometry Tiles: $\frac{1}{2}$ black (continued)

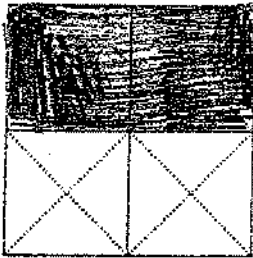
Item Number: M031348A

Student Responses

Correct Response:

- A. WITHOUT using any triangle tiles, place 4 tiles so that $\frac{1}{2}$ of a square shape is black. Then shade in the square below to show what you did with your tiles.

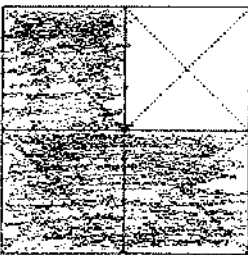
Shade in Here



Incorrect Response:

- A. WITHOUT using any triangle tiles, place 4 tiles so that $\frac{1}{2}$ of a square shape is black. Then shade in the square below to show what you did with your tiles.

Shade in Here

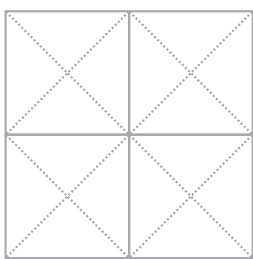


Content Domain	Main Topic	Cognitive Domain
A. NUMBER B. NUMBER	Fractions and Decimals Fractions and Decimals	Knowing Facts and Procedures Reasoning

Geometry Tiles: $\frac{5}{8}$ black

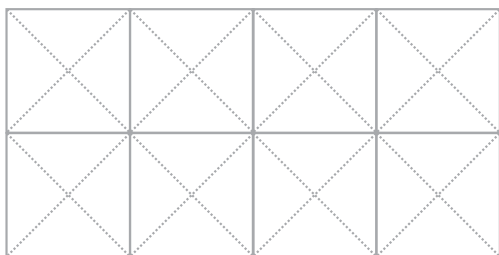
- A. WITHOUT using any triangle tiles, place 4 tiles so that $\frac{1}{2}$ of a square shape is black. Then shade in the square below to show what you did with your tiles.

Shade in Here



- B. Place 8 tiles so that $\frac{5}{8}$ of the rectangle shape is black. Then shade in the rectangle below to show what you did with your tiles.

Shade in Here



Item Number: M031348B

SCORING

Correct Response

- Any figure using 3 black, 1 white, and 4 triangle tiles:



Partially Correct Response

- $\frac{5}{8}$ of the figure shaded without using correct tiles

Incorrect Response

- $\frac{1}{2}$ of the figure shaded
- Other incorrect (including crossed out/erased, stray marks, illegible, or off task)

Overall Percent Correct

Japan	13	▲
Latvia	13	▲
England	13	▲
Belgium (Flemish)	13	▲
Australia	11	▲
Singapore	11	▲
New Zealand	10	▲
Russian Federation	10	○
Chinese Taipei	8	○
Cyprus	8	○
Lithuania	8	○
Netherlands	8	○
United States	8	○
Hong Kong, SAR	7	○
Scotland	7	○
International average	7	
Italy	6	○
Norway	5	○
Hungary	4	▼
Iran, Islamic Republic of	1	▼
Moldova, Republic of	1	▼
Philippines	1	▼
Slovenia	1	▼
Tunisia	1	▼
Armenia	0	▼
Morocco	0	▼

Country average vs. International average:

Higher	▲
Not different	○
Lower	▼

Geometry Tiles: $\frac{5}{8}$ black (continued)

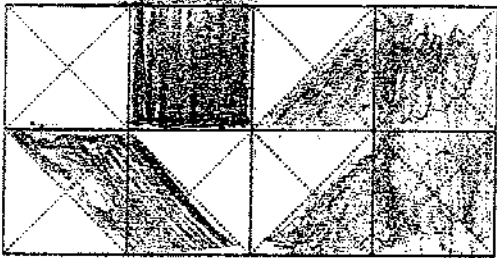
Item Number: M031348B

Student Responses

Correct Response:

- B. Place 8 tiles so that $\frac{5}{8}$ of the rectangle shape is black. Then shade in the rectangle below to show what you did with your tiles.

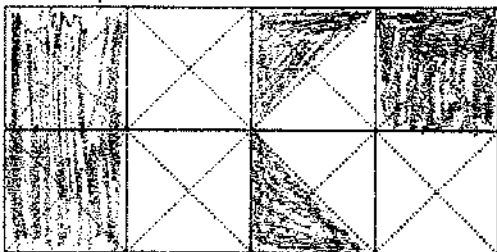
Shade in Here



Incorrect Response:

- B. Place 8 tiles so that $\frac{5}{8}$ of the rectangle shape is black. Then shade in the rectangle below to show what you did with your tiles.

Shade in Here



Content Domain	Main Topic	Cognitive Domain
NUMBER	Fractions and Decimals	Solving Routine Problems

Fraction of cake left

Janis, Maija, and their mother were eating a cake. Janis ate $\frac{1}{2}$ of the cake.
 Maija ate $\frac{1}{4}$ of the cake. Their mother ate $\frac{1}{4}$ of the cake.
 How much of the cake is left?

- (A) $\frac{3}{4}$
- (B) $\frac{1}{2}$
- (C) $\frac{1}{4}$
- (D) None

Overall Percent Correct

Singapore	83	▲
England	83	▲
Hong Kong, SAR	82	▲
New Zealand	74	▲
Lithuania	73	▲
Scotland	70	▲
Australia	68	▲
United States	65	▲
Belgium (Flemish)	65	▲
Netherlands	63	○
Russian Federation	63	○
Hungary	61	○
Moldova, Republic of	61	○
Italy	60	○
Latvia	60	○
International average	59	
Slovenia	58	○
Cyprus	54	▼
Chinese Taipei	51	▼
Norway	49	▼
Armenia	48	▼
Iran, Islamic Republic of	48	▼
Japan	47	▼
Morocco	32	▼
Philippines	32	▼
Tunisia	24	▼

Country average vs.
International average:

Higher ▲
 Not different ○
 Lower ▼

Item Number: M012119

Correct Response:

D

Content Domain	Main Topic	Cognitive Domain
NUMBER	Fractions and Decimals	Solving Routine Problems

$\frac{1}{3}$ of 600 balls in a box

There are 600 balls in a box, and $\frac{1}{3}$ of the balls are red.

How many red balls are in the box?

Answer: _____ red balls

Overall Percent Correct

Lithuania	85	▲
Singapore	84	▲
Latvia	82	▲
Belgium (Flemish)	82	▲
Russian Federation	78	▲
Moldova, Republic of	68	▲
Cyprus	64	▲
Hong Kong, SAR	64	▲
Armenia	63	▲
Netherlands	63	▲
Hungary	62	▲
Japan	56	▲
Chinese Taipei	55	▲
International average	49	
Italy	43	▼
England	41	▼
Scotland	40	▼
United States	38	▼
New Zealand	34	▼
Slovenia	32	▼
Australia	30	▼
Tunisia	24	▼
Norway	19	▼
Philippines	14	▼
Iran, Islamic Republic of	9	▼
Morocco	7	▼

Country average vs. International average:

Higher	▲
Not different	○
Lower	▼

Item Number: M031065

SCORING

Correct Response

- 200

Incorrect Response

- Incorrect (including crossed out/erased, stray marks, illegible, or off task)

$\frac{1}{3}$ of 600 balls in a box (continued)

Item Number: M031065

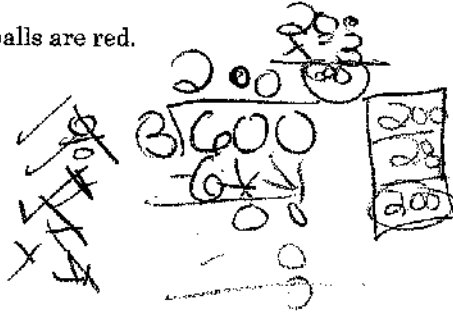
Student Responses

Correct Response:

There are 600 balls in a box, and $\frac{1}{3}$ of the balls are red.

How many red balls are in the box?

Answer: 200 red balls

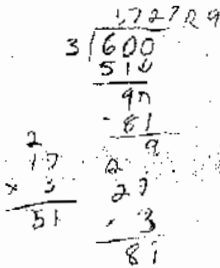


Incorrect Response:

There are 600 balls in a box, and $\frac{1}{3}$ of the balls are red.

How many red balls are in the box?

Answer: 1,727,29 red balls



Content Domain	Main Topic	Cognitive Domain
NUMBER	Fractions and Decimals	Solving Routine Problems

What fraction of cake John ate

A cake was cut into 8 pieces of equal size. John ate 3 pieces of the cake.
What fraction of the cake did John eat?

- (A) $\frac{1}{8}$
- (B) $\frac{3}{8}$
- (C) $\frac{3}{5}$
- (D) $\frac{8}{3}$

Overall Percent Correct

Chinese Taipei	97	▲
Hong Kong, SAR	93	▲
Singapore	89	▲
Belgium (Flemish)	89	▲
Japan	88	▲
United States	86	▲
Cyprus	85	▲
Netherlands	83	▲
England	80	▲
Australia	79	▲
New Zealand	77	▲
Lithuania	73	▲
Italy	72	○
Scotland	71	○
Latvia	69	○
International average	69	
Hungary	64	▼
Norway	62	▼
Iran, Islamic Republic of	58	▼
Russian Federation	58	▼
Armenia	53	▼
Philippines	52	▼
Moldova, Republic of	46	▼
Slovenia	42	▼
Tunisia	28	▼
Morocco	27	▼

Country average vs. International average:

Higher	▲
Not different	○
Lower	▼

Item Number: M031216

Correct Response:

B

Content Domain	Main Topic	Cognitive Domain
NUMBER	Fractions and Decimals	Using Concepts

Which figure has one-half black dots

In which figure are one-half of the dots black?

(A)

(B)

(C)

(D)

Overall Percent Correct

Belgium (Flemish)	97	▲
Netherlands	97	▲
Hungary	95	▲
Moldova, Republic of	91	▲
Russian Federation	90	▲
Hong Kong, SAR	90	▲
Lithuania	89	▲
Singapore	89	▲
Japan	88	▲
Italy	88	▲
Armenia	86	▲
Norway	85	▲
Australia	85	▲
Latvia	84	▲
England	84	▲
New Zealand	84	▲
United States	79	▲
Scotland	76	○
International average	75	
Iran, Islamic Republic of	66	▼
Cyprus	56	▼
Morocco	47	▼
Tunisia	46	▼
Chinese Taipei	42	▼
Philippines	37	▼

Country average vs. International average:

Higher ▲
 Not different ○
 Lower ▼

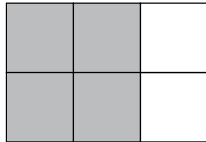
Item Number: M011001

Correct Response:	B
--------------------------	----------

Content Domain	Main Topic	Cognitive Domain
NUMBER	Fractions and Decimals	Using Concepts

3 of 4 squares shaded

In this diagram, 2 out of every 3 squares are shaded.



Which diagram has 3 out of every 4 squares shaded?

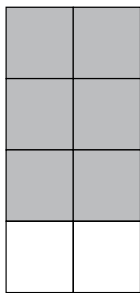
(A)



(B)



(C)



(D)



Item Number: M011016

Overall Percent Correct

Singapore	77	▲
Belgium (Flemish)	74	▲
Japan	73	▲
Lithuania	71	▲
Hong Kong, SAR	70	▲
Italy	68	▲
Netherlands	65	▲
United States	63	▲
England	63	▲
Cyprus	60	▲
Moldova, Republic of	60	▲
Chinese Taipei	59	▲
Slovenia	56	○
International average	55	
Scotland	54	○
Australia	51	○
New Zealand	51	○
Norway	46	▼
Russian Federation	46	▼
Hungary	45	▼
Latvia	45	▼
Armenia	43	▼
Iran, Islamic Republic of	43	▼
Philippines	33	▼
Morocco	25	▼
Tunisia	22	▼

Country average vs. International average:

- Higher ▲
- Not different ○
- Lower ▼

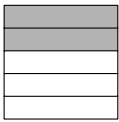
Correct Response:	C
--------------------------	----------

Content Domain	Main Topic	Cognitive Domain
NUMBER	Fractions and Decimals	Using Concepts

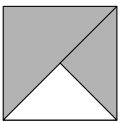
Figure showing fraction of shaded square

Which shows $\frac{2}{3}$ of the square shaded?

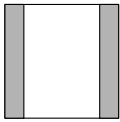
(A)



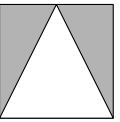
(B)



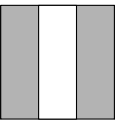
(C)



(D)



(E)



Overall Percent Correct

Singapore	93	▲
Hong Kong, SAR	86	▲
United States	82	▲
Chinese Taipei	81	▲
Belgium (Flemish)	79	▲
Japan	76	▲
Cyprus	75	▲
Netherlands	73	▲
England	67	▲
Australia	62	▲
Latvia	60	○
New Zealand	59	○
International average	57	
Hungary	56	○
Lithuania	56	○
Italy	55	○
Scotland	52	▼
Philippines	50	▼
Russian Federation	49	▼
Iran, Islamic Republic of	47	▼
Moldova, Republic of	43	▼
Slovenia	34	▼
Armenia	29	▼
Norway	29	▼
Morocco	13	▼
Tunisia	12	▼

Country average vs. International average:

Higher	▲
Not different	○
Lower	▼

Item Number: M012044

Correct Response:	E
--------------------------	----------

Content Domain	Main Topic	Cognitive Domain
NUMBER	Ratio, Proportions, and Percent	Solving Routine Problems

Maria collected soft drink bottles

For every soft drink bottle that Fred collected, Maria collected 3. Fred collected a total of 9 soft drink bottles. How many did Maria collect?

Ⓐ 3
 Ⓑ 12
 Ⓒ 13
 Ⓓ 27

Item Number: M031108

Overall Percent Correct

Chinese Taipei	74	▲
Hong Kong, SAR	74	▲
Lithuania	67	▲
Singapore	67	▲
Japan	65	▲
Netherlands	63	▲
England	60	▲
Belgium (Flemish)	59	▲
Cyprus	58	▲
United States	55	▲
Hungary	52	○
Russian Federation	52	○
International average	49	
Scotland	47	○
Armenia	46	○
Slovenia	46	○
Moldova, Republic of	43	○
Australia	42	▼
Italy	40	▼
New Zealand	40	▼
Norway	40	▼
Latvia	38	▼
Iran, Islamic Republic of	28	▼
Tunisia	21	▼
Morocco	20	▼
Philippines	20	▼

Country average vs. International average:

Higher	▲
Not different	○
Lower	▼

Correct Response:

D

Content Domain	Main Topic	Cognitive Domain
NUMBER	Whole Numbers	Knowing Facts and Procedures

Number rounded to 600

Which number would be rounded to 600 when rounded to the nearest hundred?

- (A) 62
- (B) 160
- (C) 546
- (D) 586
- (E) 660

Overall Percent Correct

Singapore	87	▲
Chinese Taipei	86	▲
Netherlands	86	▲
Japan	85	▲
England	84	▲
Hungary	83	▲
Hong Kong, SAR	82	▲
United States	80	▲
Australia	78	▲
Scotland	78	▲
Belgium (Flemish)	78	▲
Moldova, Republic of	70	▲
New Zealand	70	▲
Cyprus	68	▲
International average	64	
Lithuania	61	○
Norway	59	○
Italy	53	▼
Morocco	52	▼
Latvia	50	▼
Armenia	46	▼
Russian Federation	45	▼
Slovenia	39	▼
Tunisia	38	▼
Philippines	20	▼
Iran, Islamic Republic of	11	▼

Country average vs.
International average:

Higher	▲
Not different	○
Lower	▼

Item Number: M011019

Correct Response:

D

Content Domain	Main Topic	Cognitive Domain
NUMBER	Whole Numbers	Knowing Facts and Procedures

Which number is it

What number equals 3 ones + 5 tens + 4 hundreds + 60 thousands?

- (A) 6,453
- (B) 60,453
- (C) 64,530
- (D) 354,060
- (E) 604,530

Overall Percent Correct

Singapore	88	▲
Netherlands	85	▲
Japan	84	▲
Chinese Taipei	83	▲
Hungary	83	▲
Latvia	80	▲
Russian Federation	80	▲
United States	80	▲
Belgium (Flemish)	80	▲
Italy	72	▲
Cyprus	70	○
Lithuania	69	○
England	68	○
International average	68	
Iran, Islamic Republic of	63	○
Australia	62	▼
New Zealand	62	▼
Hong Kong, SAR	61	▼
Slovenia	61	▼
Norway	60	▼
Moldova, Republic of	59	▼
Morocco	53	▼
Scotland	52	▼
Tunisia	51	▼
Philippines	45	▼
Armenia	42	▼

Country average vs. International average:

- Higher ▲
- Not different ○
- Lower ▼

Item Number: M011021

Correct Response:	B
--------------------------	----------

Content Domain	Main Topic	Cognitive Domain
NUMBER	Whole Numbers	Knowing Facts and Procedures

Express number in words

Which of these is a name for 9,740?

(A) Nine thousand seventy-four
 (B) Nine thousand seven hundred forty
 (C) Nine thousand seventy-four hundred
 (D) Nine hundred seventy-four thousand

Item Number: M011024

Overall Percent Correct

Chinese Taipei	98	▲
Hong Kong, SAR	98	▲
Singapore	97	▲
Japan	96	▲
England	95	▲
Belgium (Flemish)	95	▲
Netherlands	92	▲
Italy	91	▲
Lithuania	91	▲
United States	91	▲
Latvia	90	▲
Russian Federation	90	▲
Australia	89	○
Hungary	88	○
Moldova, Republic of	87	○
New Zealand	87	○
Scotland	87	○
International average	86	
Cyprus	85	○
Slovenia	81	▼
Norway	80	▼
Armenia	79	▼
Philippines	79	▼
Iran, Islamic Republic of	72	▼
Morocco	64	▼
Tunisia	50	▼

Country average vs. International average:	
Higher	▲
Not different	○
Lower	▼

Correct Response:	B
-------------------	----------

Content Domain	Main Topic	Cognitive Domain
NUMBER	Whole Numbers	Knowing Facts and Procedures

Which number is equal

Which number is equal to eight tens plus nine tens?

(A) 17

(B) 170

(C) 1,700

(D) 17,000

Overall Percent Correct

Chinese Taipei	91	▲
Singapore	87	▲
Hungary	85	▲
Moldova, Republic of	84	▲
Hong Kong, SAR	80	▲
Netherlands	77	▲
Latvia	75	▲
Lithuania	73	▲
New Zealand	73	▲
England	73	▲
Armenia	72	▲
Russian Federation	72	▲
Belgium (Flemish)	70	▲
Japan	69	▲
Australia	67	○
Norway	65	○
United States	65	○
International average	65	
Scotland	64	○
Cyprus	54	▼
Slovenia	53	▼
Italy	51	▼
Iran, Islamic Republic of	34	▼
Morocco	29	▼
Philippines	28	▼
Tunisia	27	▼

Country average vs. International average:

Higher ▲

Not different ○

Lower ▼

Item Number: M011028

Correct Response:	B
-------------------	----------

Content Domain	Main Topic	Cognitive Domain
NUMBER	Whole Numbers	Knowing Facts and Procedures

15 times 9

$15 \times 9 =$

Answer: _____

Overall Percent Correct

Chinese Taipei	94	▲
Singapore	93	▲
Hong Kong, SAR	91	▲
Russian Federation	90	▲
Moldova, Republic of	88	▲
Lithuania	87	▲
Japan	86	▲
Latvia	86	▲
Netherlands	86	▲
Armenia	85	▲
Hungary	85	▲
Belgium (Flemish)	84	▲
Cyprus	76	▲
Italy	75	○
United States	73	○
International average	72	
Tunisia	68	○
Slovenia	67	○
Iran, Islamic Republic of	61	▼
Philippines	59	▼
England	59	▼
Scotland	54	▼
Australia	45	▼
New Zealand	41	▼
Morocco	36	▼
Norway	30	▼

Country average vs. International average:

Higher	▲
Not different	○
Lower	▼

Item Number: M031305

SCORING**Correct Response**

- 135

Incorrect Response

- Incorrect (including crossed out/erased, stray marks, illegible, or off task)

15 times 9 (continued)

Item Number: M031305

Student Responses

Correct Response:

$$\begin{array}{r} 15 \times 9 = \\ \underline{9} \\ 135 \end{array}$$

Answer: 135

Incorrect Response:

$$15 \times 9 =$$

Answer: 55

Content Domain	Main Topic	Cognitive Domain
NUMBER	Whole Numbers	Knowing Facts and Procedures

204 divided by 4

204 ÷ 4 =

Answer: _____

Overall Percent Correct

Hong Kong, SAR	93	▲
Singapore	91	▲
Chinese Taipei	90	▲
Russian Federation	90	▲
Hungary	86	▲
Moldova, Republic of	85	▲
Japan	84	▲
Latvia	82	▲
Lithuania	82	▲
Belgium (Flemish)	77	▲
Cyprus	72	▲
Italy	71	▲
Armenia	70	▲
Netherlands	65	○
International average	63	
United States	55	▼
Tunisia	47	▼
Iran, Islamic Republic of	46	▼
England	46	▼
Scotland	42	▼
Slovenia	41	▼
Philippines	38	▼
Australia	33	▼
New Zealand	33	▼
Norway	27	▼
Morocco	17	▼

Country average vs. International average:	
Higher	▲
Not different	○
Lower	▼

Item Number: M031306

SCORING

Correct Response

- 51

Incorrect Response

- Incorrect (including crossed out/erased, stray marks, illegible, or off task)

204 divided by 4 (continued)

Item Number: M031306

Student Responses

Correct Response:

$$204 \div 4 =$$

Answer: 51

$$\begin{array}{r} 51 \\ 4 \overline{)204} \\ \underline{20} \\ 04 \\ \underline{04} \\ 0 \end{array}$$

Incorrect Response:

$$204 \div 4 =$$

Answer: 150 R4

$$\begin{array}{r} 150 \\ 4 \overline{)204} \\ \underline{4} \\ 20 \\ \underline{20} \\ 04 \end{array}$$

Content Domain	Main Topic	Cognitive Domain
NUMBER	Whole Numbers	Reasoning

The number Lia should add to 142 to get 369

Lia is practicing addition and subtraction problems. What number should Lia add to 142 to get 369?

Answer: _____

Overall Percent Correct

Singapore	88	▲
Hungary	86	▲
Russian Federation	85	▲
Chinese Taipei	83	▲
Lithuania	83	▲
Hong Kong, SAR	82	▲
Japan	81	▲
Latvia	79	▲
Belgium (Flemish)	72	▲
United States	71	▲
Netherlands	69	▲
Armenia	64	○
Cyprus	64	○
Moldova, Republic of	64	○
International average	62	
England	59	○
Italy	57	○
Slovenia	54	▼
Australia	52	▼
Scotland	51	▼
New Zealand	46	▼
Iran, Islamic Republic of	39	▼
Norway	37	▼
Tunisia	29	▼
Philippines	28	▼
Morocco	24	▼

Country average vs. International average:

Higher	▲
Not different	○
Lower	▼

Item Number: M031130

SCORING

Correct Response

- 227

Incorrect Response

- Incorrect (including crossed out/erased, stray marks, illegible, or off task)

The number Lia should add to 142 to get 369 (continued)

Item Number: M031130

Student Responses

Correct Response:

Lia is practicing addition and subtraction problems. What number should Lia add to 142 to get 369?

Answer: 227

$$\begin{array}{r} 369 \\ - 142 \\ \hline 227 \end{array}$$

Incorrect Response:

Lia is practicing addition and subtraction problems. What number should Lia add to 142 to get 369?

Answer: 225

$$\begin{array}{r} 369 \\ - 142 \\ \hline 225 \end{array}$$

Content Domain	Main Topic	Cognitive Domain
NUMBER	Whole Numbers	Reasoning

1279 plus 243 by mistake

Juanita wanted to use her calculator to add 1,379 and 243. She entered 1,279+ 243 by mistake. Which of these could she do to correct the mistake?

(A) Add 100
 (B) Add 1
 (C) Subtract 1
 (D) Subtract 100

Overall Percent Correct

Hungary	89	▲
Netherlands	88	▲
Belgium (Flemish)	88	▲
Chinese Taipei	85	▲
Hong Kong, SAR	84	▲
Japan	83	▲
Russian Federation	83	▲
Singapore	83	▲
England	82	▲
Latvia	79	▲
Lithuania	77	▲
Slovenia	77	○
Australia	76	▲
United States	75	▲
Scotland	74	○
Cyprus	73	○
International average	72	
Italy	70	○
Norway	70	○
Moldova, Republic of	68	○
New Zealand	68	▼
Armenia	64	▼
Philippines	47	▼
Iran, Islamic Republic of	45	▼
Tunisia	39	▼
Morocco	38	▼

Country average vs. International average:	
Higher	▲
Not different	○
Lower	▼

Item Number: M031341

Correct Response:	A
-------------------	---

Content Domain	Main Topic	Cognitive Domain
NUMBER	Whole Numbers	Solving Routine Problems

Total number of boys and girls

In Toshi's class there are twice as many girls as boys. There are 8 boys in the class. What is the total number of boys and girls in the class?

(A) 12
 (B) 16
 (C) 20
 (D) 24

Item Number: M011002

Overall Percent Correct

Netherlands	82	▲
Singapore	81	▲
New Zealand	64	▲
Hungary	62	▲
Japan	62	▲
Belgium (Flemish)	62	▲
Australia	60	▲
Lithuania	60	▲
England	60	▲
Cyprus	56	▲
United States	54	▲
Latvia	53	○
Russian Federation	53	○
Italy	51	○
International average	51	
Hong Kong, SAR	50	○
Slovenia	50	○
Norway	49	○
Scotland	48	○
Moldova, Republic of	47	○
Armenia	40	▼
Chinese Taipei	29	▼
Morocco	24	▼
Tunisia	24	▼
Philippines	22	▼
Iran, Islamic Republic of	20	▼

Country average vs. International average:

Higher	▲
Not different	○
Lower	▼

Correct Response:

D

Content Domain	Main Topic	Cognitive Domain
NUMBER	Whole Numbers	Solving Routine Problems

Total number of pencils

There are 9 boxes of pencils. Each box has 125 pencils. What is the total number of pencils?

- (A) 1,025
- (B) 1,100
- (C) 1,125
- (D) 1,220
- (E) 1,225

Overall Percent Correct

Singapore	91	▲
Chinese Taipei	83	▲
Russian Federation	79	▲
Hong Kong, SAR	77	▲
Cyprus	76	▲
United States	76	▲
Japan	74	▲
Hungary	73	▲
Lithuania	73	▲
Latvia	72	▲
Italy	70	▲
Moldova, Republic of	69	▲
Armenia	66	○
Netherlands	64	○
Belgium (Flemish)	63	○
International average	63	
England	55	▼
Scotland	51	▼
Slovenia	50	▼
Iran, Islamic Republic of	49	▼
Philippines	49	▼
Australia	48	▼
New Zealand	47	▼
Tunisia	45	▼
Morocco	37	▼
Norway	34	▼

Country average vs. International average:

Higher	▲
Not different	○
Lower	▼

Item Number: M011003

Correct Response:

C

Content Domain	Main Topic	Cognitive Domain
NUMBER	Whole Numbers	Solving Routine Problems

How long to wash windows

It takes Chris 4 minutes to wash a window. He wants to know how many minutes it will take him to wash 8 windows at this rate. He should

- (A) multiply 4×8
- (B) divide 8 by 4
- (C) subtract 4 from 8
- (D) add 8 and 4

Overall Percent Correct

Chinese Taipei	94	▲
Singapore	93	▲
Netherlands	92	▲
Hong Kong, SAR	91	▲
Japan	91	▲
Belgium (Flemish)	89	▲
Lithuania	88	▲
United States	88	▲
England	88	▲
Cyprus	85	▲
Hungary	84	▲
Latvia	83	▲
Russian Federation	83	▲
Australia	81	▲
Italy	79	○
Scotland	79	○
Moldova, Republic of	77	○
International average	77	
Armenia	73	▼
New Zealand	73	▼
Slovenia	69	▼
Norway	68	▼
Philippines	56	▼
Iran, Islamic Republic of	51	▼
Morocco	40	▼
Tunisia	40	▼

Country average vs.
International average:

Higher	▲
Not different	○
Lower	▼

Item Number: M011011

Correct Response:

A

Content Domain	Main Topic	Cognitive Domain
NUMBER	Whole Numbers	Solving Routine Problems

Estimate number of cabbages

Mark's garden has 84 rows of cabbages. There are 57 cabbages in each row. Which of these gives the BEST way to estimate how many cabbages there are altogether?

- (A) $100 \times 50 = 5,000$
- (B) $90 \times 60 = 5,400$
- (C) $80 \times 60 = 4,800$
- (D) $80 \times 50 = 4,000$

Overall Percent Correct

Singapore	84	▲
Hong Kong, SAR	71	▲
United States	70	▲
Netherlands	68	▲
Belgium (Flemish)	68	▲
Hungary	66	▲
Moldova, Republic of	62	▲
Chinese Taipei	61	▲
Japan	59	▲
Cyprus	55	▲
England	51	○
International average	50	
Australia	48	○
Lithuania	46	▼
Armenia	45	▼
Russian Federation	45	○
Slovenia	45	▼
Scotland	42	▼
Latvia	40	▼
New Zealand	36	▼
Philippines	35	▼
Italy	34	▼
Norway	32	▼
Tunisia	31	▼
Iran, Islamic Republic of	30	▼
Morocco	26	▼

Country average vs.
International average:

Higher	▲
Not different	○
Lower	▼

Item Number: M012117

Correct Response:

C