



# The Fishing Line



Summer, 2005

Volume I, No. 2

## MEET THE FRIENDS STAFF



**M**ai Nou Lor-Vang, B.S., is the FRIENDS Center Project Manager and is responsible for directing the field research office in Green Bay, coordinating and directing the recruitment of participants.

FRIENDS Children's Environmental Health Center  
101 N Webster tel: 432-0015  
Green Bay, WI 54301 mainou@friendscenter.us

*Editors: Mai Nou Lor-Vang, Karen Decker*

**S**ay Vang has been with the FRIENDS Center since 2000. She is a Community Interviewer for the Green Bay area FRIENDS Center where she interviews couples and does cognitive testing with adults.



**X**ay Vue Lor, B.A., is a Translator and Community Interviewer for the Green Bay area FRIENDS Center. He translates for the Center as well as interviewing couples.

**P**a Houa P. Kiatoukaysi, M.S, is a Community Interviewer for the Green Bay area FRIENDS Center. She interviews couples and does testing with teenagers.



## MEMORIAL DAY WEEKEND BOOTH

**Saturday, May 28, 2005**

**Location: Brown County Fair Grounds,  
Green Bay, WI**

The FRIENDS Children's Environmental Health Center will have an information booth at the Annual Sports Soccer/Volleyball tournament on Saturday.

The researchers and staff involved with the project will be there to answer questions about their research, the FRIENDS Center, and fishing advisories.

Stop by our booth to enter your name to win a sports chair with umbrella and pick up a FRIENDS water bottle and balloons for the kids!

## MARCH FISHING RAFFLE RESULTS

Congratulations to the seven fishing license winners! In March we called our participants to tell them about the 2005 Fishing License Raffle that the FRIENDS Center held as a way to thank them for being a part of the FRIENDS Children's Environmental Health Center. For those who did not win, we will be holding

a fishing license raffle every March. We are also planning some other fun events and raffles for the people who are participants of the FRIENDS Center, so please be sure to update us with changes to your address or phone number so we can tell you about these fun events.

---

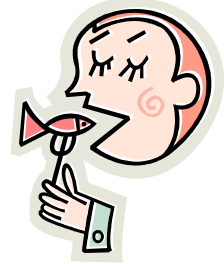
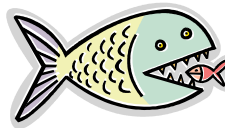
## THE QUESTION CORNER

The best way to learn is to ask! We enjoy answering your questions about PCBs and mercury, so please ask! Here are a couple of questions we often come across from our participants.

### *How did PCBs get into the River (or into fish)?*

PCBs are a chemical that was used by some paper companies to make some types of paper. The paper companies released waste containing PCBs into the River. This happened a long time ago, before we knew that PCBs were toxic. The PCBs settled to the bottom of the River and stayed there.

When fish feed at the bottom of the river they take up PCBs into their bodies. That is why catfish and carp have a lot of PCBs. If other fish eat smaller fish that have been feeding at the River bottom the PCBs get into to them. PCBs build up in fish just like they do in people, so the biggest fish that have been living in the River the longest usually have the most PCBs. Also, PCBs are stored in fat, so types of fish that have more fat usually have more PCBs.



### *What kinds of health problems do PCBs cause?*

PCBs are most harmful to unborn babies and very young children. If a pregnant woman has PCBs in her body they can pass to the baby. The PCBs probably won't make the baby sick, but research is being done to see if they could make the baby learn more slowly. When the child gets older and goes to school he or she might have more trouble learning.

### Would you like to Participate in the FRIENDS Center research?

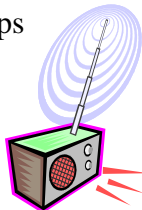
If you are interested in participating in the FRIENDS Center Research project and would like more information, please contact Mai Nou Lor-Vang at [mainou@friendscenter.us](mailto:mainou@friendscenter.us) or you can write to FRIENDS Center, 101 N. Webster Avenue, Green Bay, WI 54301. We will contact you with information and benefits to this educational research project.

---

## RADIO ANNOUNCEMENTS

The FRIENDS Center airs announcements twice a month on Hmong Radio. The Hmong radio program is on Saturdays, from 5:00 –7:00 p.m. on 88.1 FM, Wisconsin Public Radio. Listen for these upcoming announcements:

- |         |                               |
|---------|-------------------------------|
| May 7   | Women's Health Week           |
| May 21  | Burglary Home Prevention Tips |
| June 4  | Pesticides Safety             |
| June 18 | Helmet Safety                 |
| July 2  | Firework Safety               |
| July 16 | Sun Safety                    |
| July 30 | Missing Children Prevention   |



**Look for the next issue of  
*The Fishing Line* this  
August!**

If you have any questions about this newsletter or the FRIENDS Center you can call our office at 920-432-0015.

### Health and Safety Information: Helmets

In the summer kids often enjoy bicycling, skateboarding, and rollerblading. These activities are fun and healthy, but it is important to make sure children are safe while doing them. You can help protect your child by having them wear a helmet every time they go bicycling, skateboarding, or rollerblading. This helmet should fit correctly and meet helmet safety standards.

To make sure that the helmet fits correctly, put the helmet on the child's head. The helmet should not move back and forth or side to side loosely. You should be able to place one or two fingers between your child's eyebrows and the inside rim of the helmet. Make sure the straps of the helmet form a "V" under your child's ears when buckled. The strap should be snug but comfortable.

Wearing a properly fitted helmet and following these tips can help prevent your children from getting hurt.



### Thank you for attending the FRIENDS 2005 Open House!

The FRIENDS Center would like to take a moment to thank all of you who took the time to join us at our Open House event on March 19, 2005 at Neng Yee's Performance Center. We hope that all of you who came to the snowy Open House event had a wonderful time playing one of the many educational games, learning about the center from our posters, or just enjoyed the egg rolls. For those who were unable to attend this year's Open House event, come visit our booth at the Memorial Day celebration.

Moving? Let us know! Detach and mail to the FRIENDS Center, 101 N Webster, Green Bay, WI 54301



Name: \_\_\_\_\_

Old Address and phone:

\_\_\_\_\_  
\_\_\_\_\_  
\_\_\_\_\_

New address and phone:

\_\_\_\_\_  
\_\_\_\_\_  
\_\_\_\_\_



FRIENDS Children's Environmental Health Center  
University of Illinois, Department of Vet Biosciences  
2001 South Lincoln  
Urbana, IL 61802

Return service requested