

*APPENDIX A*  
*Figures*



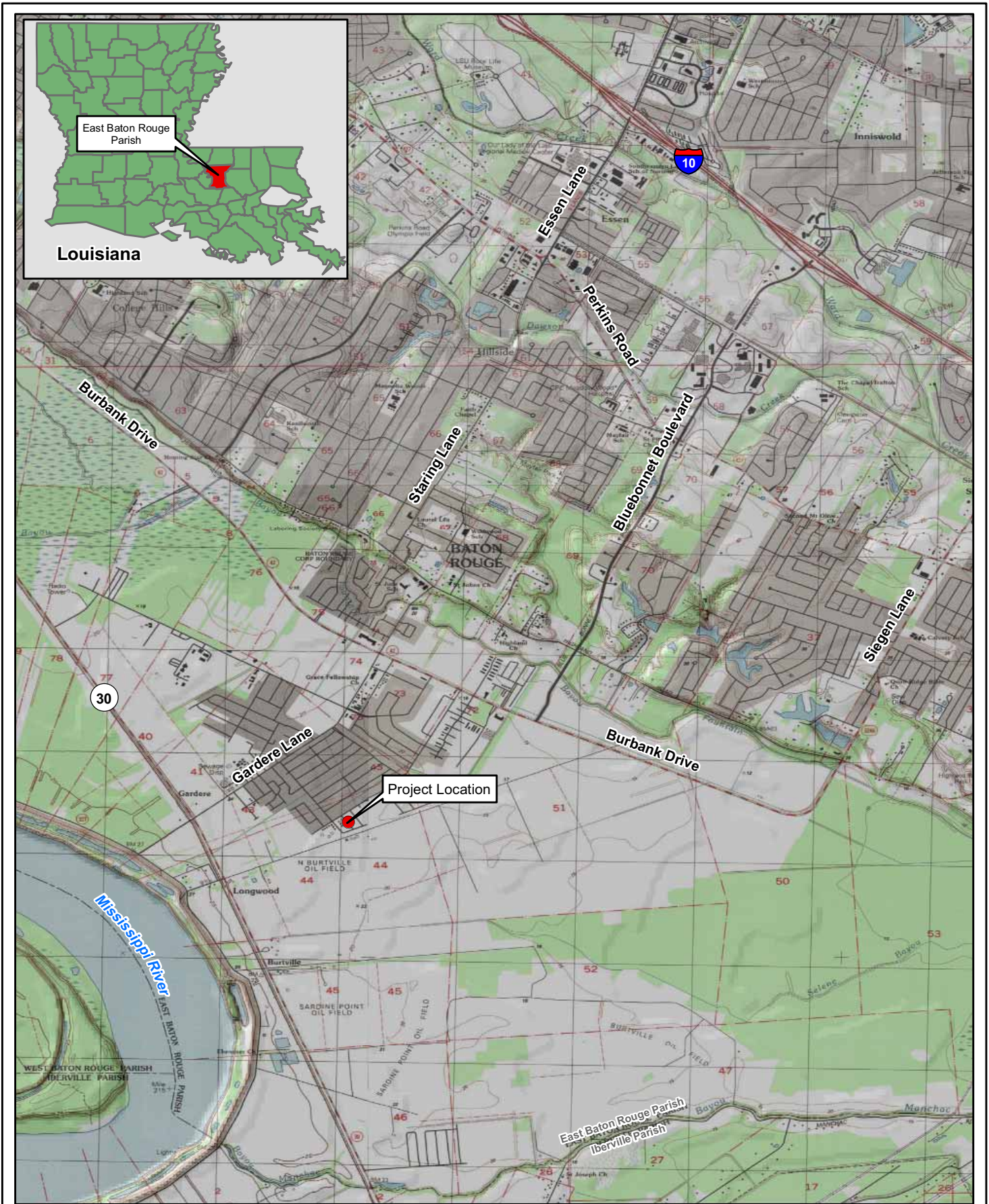


Figure 1: Vicinity Map





Figure 2: Project Location Map



Figure 3: Conceptual Site Plan  
 Louisiana Cottages - Baton Rouge



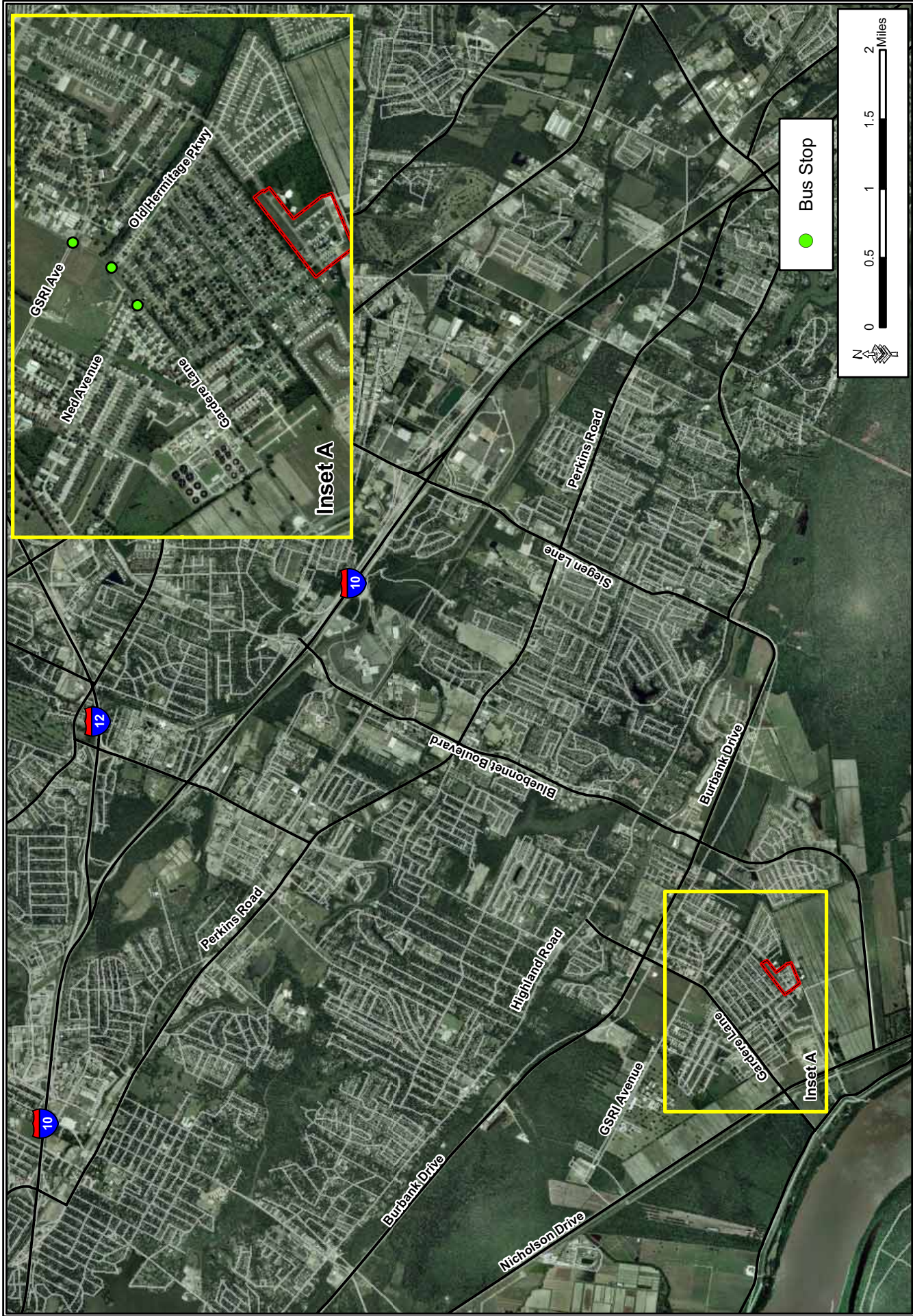


Figure 4: Hidden Cove Transportation Map

*APPENDIX C*  
*Air Emission Calculations*

---

---

CALCULATION SHEET-COMBUSTABLE EMISSIONS

Assumptions for Combustable Emissions						
Type of Construction Equipment	Num. of Units	HP Rated	Hrs/day	Days/yr	Total hp-hrs	
Water Truck	1	300	8	240	576000	
Diesel Road Compactors	1	100	8	240	192000	
Diesel Dump Truck	1	300	8	90	216000	
Diesel Excavator	1	300	8	90	216000	
Diesel Hole Trenchers	0	175	8	90	0	
Diesel Bore/Drill Rigs	0	300	8	90	0	
Diesel Cement & Mortar Mixers	1	300	8	240	576000	
Diesel Cranes	2	175	8	240	672000	
Diesel Graders	1	300	8	90	216000	
Diesel Tractors/Loaders/Backhoes	1	100	8	240	192000	
Diesel Bull Dozers	1	300	8	240	576000	
Diesel Front End Loaders	1	300	8	240	576000	
Diesel Fork Lifts	2	100	8	240	384000	
Diesel Generator Set	6	40	8	240	460800	

Emission Factors							
Type of Construction Equipment	VOC g/hp-hr	CO g/hp-hr	NOx g/hp-hr	PM-10 g/hp-hr	PM-2.5 g/hp-hr	SO2 g/hp-hr	CO2 g/hp-hr
Water Truck	0.440	2.070	5.490	0.410	0.400	0.740	536.000
Diesel Road Compactors	0.370	1.480	4.900	0.340	0.330	0.740	536.200
Diesel Dump Truck	0.440	2.070	5.490	0.410	0.400	0.740	536.000
Diesel Excavator	0.340	1.300	4.600	0.320	0.310	0.740	536.300
Diesel Trenchers	0.510	2.440	5.810	0.460	0.440	0.740	535.800
Diesel Bore/Drill Rigs	0.600	2.290	7.150	0.500	0.490	0.730	529.700
Diesel Cement & Mortar Mixers	0.610	2.320	7.280	0.480	0.470	0.730	529.700
Diesel Cranes	0.440	1.300	5.720	0.340	0.330	0.730	530.200
Diesel Graders	0.350	1.360	4.730	0.330	0.320	0.740	536.300
Diesel Tractors/Loaders/Backhoes	1.850	8.210	7.220	1.370	1.330	0.950	691.100
Diesel Bull Dozers	0.360	1.380	4.760	0.330	0.320	0.740	536.300
Diesel Front End Loaders	0.380	1.550	5.000	0.350	0.340	0.740	536.200
Diesel Fork Lifts	1.980	7.760	8.560	1.390	1.350	0.950	690.800
Diesel Generator Set	1.210	3.760	5.970	0.730	0.710	0.810	587.300



CALCULATION SHEET-COMBUSTABLE EMISSIONS

Emission factors (EF) were generated from the NONROAD2005 model for the 2006 calendar year. The VOC EFs includes exhaust and evaporative emissions. The VOC evaporative components included in the NONROAD2005 model are diurnal, hotsoak, running loss, tank permeation, hose permeation, displacement, and spillage. The construction equipment age distribution in the NONROAD2005 model is based on the population in U.S. for the 2006 calendar year.

Emission Calculations									
Type of Construction Equipment	VOC tons/yr	CO tons/yr	NOx tons/yr	PM-10 tons/yr	PM-2.5 tons/yr	SO2 tons/yr	CO2 tons/yr		
Water Truck	0.279	1.314	3.485	0.260	0.254	0.470	340.227		
Diesel Road Paver	0.078	0.313	1.037	0.072	0.070	0.157	113.451		
Diesel Dump Truck	0.105	0.493	1.307	0.098	0.095	0.176	127.585		
Diesel Excavator	0.081	0.309	1.095	0.076	0.074	0.176	127.657		
Diesel Hole Cleaners/Trenchers	0.000	0.000	0.000	0.000	0.000	0.000	0.000		
Diesel Bore/Drill Rigs	0.000	0.000	0.000	0.000	0.000	0.000	0.000		
Diesel Cement & Mortar Mixers	0.387	1.473	4.621	0.305	0.298	0.463	336.228		
Diesel Cranes	0.326	0.963	4.236	0.252	0.244	0.541	392.636		
Diesel Graders	0.083	0.324	1.126	0.079	0.076	0.176	127.657		
Diesel Tractors/Loaders/Backhoes	0.391	1.737	1.528	0.290	0.281	0.201	146.226		
Diesel Bull Dozers	0.229	0.876	3.021	0.209	0.203	0.470	340.417		
Diesel Front End Loaders	0.241	0.984	3.174	0.222	0.216	0.470	340.354		
Diesel Aerial Lifts	0.838	3.284	3.622	0.588	0.571	0.402	292.324		
Diesel Generator Set	0.614	1.909	3.032	0.371	0.361	0.411	298.232		
<b>Total Emissions</b>	<b>3.653</b>	<b>13.978</b>	<b>31.283</b>	<b>2.821</b>	<b>2.744</b>	<b>4.112</b>	<b>2982.995</b>		

Conversion factors	
Grams to tons	1.102E-06



CALCULATION SHEET-TRANSPORTATION COMBUSTABLE EMISSIONS

Construction Worker Personal Vehicle Commuting to Construction Site-Passenger and Light Duty Trucks									
Pollutants	Emission Factors			Assumptions			Results by Pollutant		
	Passenger Cars g/mile	Pick-up Trucks, SUVs g/mile	Mile/day	Day/yr	Number of cars	Number of trucks	Total Emissions Cars tns/yr	Total Emissions Trucks tns/yr	Total tns/yr
VOCs	1.36	1.61	60	240	15	15	0.32	0.38	0.71
CO	12.4	15.7	60	240	15	15	2.95	3.74	6.69
NOx	0.95	1.22	60	240	15	15	0.23	0.29	0.52
PM-10	0.0052	0.0065	60	240	15	15	0.00	0.00	0.00
PM 2.5	0.0049	0.006	60	240	15	15	0.00	0.00	0.00

Heavy Duty Trucks Delivery Supply Trucks to Construction Site									
Pollutants	Emission Factors			Assumptions			Results by Pollutant		
	10,000-19,500 lb Delivery Truck	33,000-60,000 lb semi trailer rig	Mile/day	Day/yr	Number of trucks	Number of trucks	Total Emissions Cars tns/yr	Total Emissions Trucks tns/yr	Total tns/yr
VOCs	0.29	0.55	60	240	2	2	0.01	0.02	0.03
CO	1.32	3.21	60	240	2	2	0.04	0.10	0.14
NOx	4.97	12.6	60	240	2	2	0.16	0.40	0.56
PM-10	0.12	0.33	60	240	2	2	0.00	0.01	0.01
PM 2.5	0.13	0.36	60	240	2	2	0.00	0.01	0.02

Daily Commute New Residents									
Pollutants	Emission Factors			Assumptions			Results by Pollutant		
	Passenger Cars g/mile	Pick-up Trucks, SUVs g/mile	Mile/day	Day/yr	Number of Cars	Number of trucks	Total Emissions cars tns/yr	Total Emissions Trucks tns/yr	Total tns/yr
VOCs	1.36	1.61	50	365	20	20	0.55	0.65	1.19
CO	12.4	15.7	50	365	20	20	4.99	6.32	11.30
NOx	0.95	1.22	50	365	20	20	0.38	0.49	0.87
PM-10	0.0052	0.0065	50	365	20	20	0.00	0.00	0.00
PM 2.5	0.0049	0.006	50	365	20	20	0.00	0.00	0.00

Truck Emission Factor Source: USEPA 2005 Emission Facts: Average annual emissions and fuel consumption for gasoline-fueled passenger cars and light trucks. EPA 420-F-05-022 August 2005. Emission rates were generated using MOBILE.6 highway vehicle emission factor model.

**Construction Fugitive Dust Emissions**

**Construction Fugitive Dust Emission Factors**

	<b>Emission Factor</b>	<b>Units</b>	<b>Source</b>
General Construction Activities	0.19 ton PM10/acre-month		MRI 1996; EPA 2001; EPA 2006
New Road Construction	0.42 ton PM10/acre-month		MRI 1996; EPA 2001; EPA 2006

**PM2.5 Emissions**

PM2.5 Multiplier 0.10 (10% of PM10 emissions assumed to be PM2.5) EPA 2001; EPA 2006

**Control Efficiency**

0.50 (assume 50% control efficiency for PM10 and PM2.5 emissions) EPA 2001; EPA 2006

**Project Assumptions**

**Construction Area (0.19 ton PM10/acre-month)**  
 Duration of Construction Project 12 months  
 Length 0 miles  
 Length (converted) 0 feet  
 Width 0 feet  
 Area 12.00 acres  
**Conversion Factors**  
 0.000022957 acres per feet  
 5280 feet per mile

**Staging Areas**

Duration of Construction Project  
 Length  
 Length (converted)  
 Width  
 Area 0.00

	<b>Project Emissions (tons/year)</b>		
	<b>PM10 uncontrolled</b>	<b>PM10 controlled</b>	<b>PM2.5 uncontrolled</b>
Construction Area (0.19 ton PM10/acr	27.36	13.68	2.74
Staging Areas	0.00	0.00	0.00
<b>Total</b>	<b>27.36</b>	<b>13.68</b>	<b>2.74</b>
			<b>1.37</b>
			<b>0.00</b>
			<b>1.37</b>

*APPENDIX D*  
*Rare, Sensitive, or Endangered Species*

---

---





Rare, Threatened, & Endangered Species & Natural Communities  
 Tracked by the Louisiana Natural Heritage Program  
 East Baton Rouge Parish - April 2008



PARISH: East Baton Rouge

Scientific Name	Common Name	State Rank	Global Rank	State Status	Federal Status
<i>Alosa alabamae</i>	Alabama Shad	S1	G3		C
<i>Anodontoideus radiatus</i>	Rayed Creekshell	S2	G3		
<a href="#"><i>Bottomland hardwood forest</i></a>	Bottomland Hardwood Forest	S4	G4G5		
<a href="#"><i>Cypress-tupelo swamp</i></a>	Cypress-tupelo Swamp	S4	G3G5		
<a href="#"><i>Dryopteris ludoviciana</i></a>	Southern Shield Wood-fern	S2	G4		
<i>Dryopteris x australis</i>	Hybrid	SH	GNA		
<a href="#"><i>Elanoides forficatus</i></a>	American Swallow-tailed Kite	S1S2B	G5		
<a href="#"><i>Eleocharis wolfii</i></a>	Wolf Spikerush	S3	G3G4		
<a href="#"><i>Farancia erythrogramma</i></a>	Rainbow Snake	S2	G4		
<a href="#"><i>Hackberry-american elm-green ash forest</i></a>	Hackberry-American Elm-Green Ash Bottomland Forest	S4	G4G5		
<a href="#"><i>Haliaeetus leucocephalus</i></a>	Bald Eagle	S2N,S3B	G5	Endangered	Delisted
<a href="#"><i>Hemidactylum scutatum</i></a>	Four-toed Salamander	S1	G5		
<i>Lampsilis ornata</i>	Southern Pocketbook	S3	G5		
<a href="#"><i>Mimulus ringens</i></a>	Square-stemmed Monkey-flower	S2	G5		
<a href="#"><i>Mustela frenata</i></a>	Long-tailed Weasel	S2S4	G5		
<i>National champion tree</i>	National Champion Tree	SNR	GNR		
<a href="#"><i>Obovaria jacksoniana</i></a>	Southern Hickorynut	S1S2	G2		
<a href="#"><i>Ophisaurus ventralis</i></a>	Eastern Glass Lizard	S3	G5		
<i>Platyhelys querceicola</i>	Low Erythrodes	S1	G3G5		
<a href="#"><i>Potamilus inflatus</i></a>	Inflated Heelsplitter	S1	G1G2Q	Threatened	LT
<a href="#"><i>Prairie terrace loess forest</i></a>	Prairie Terrace Loess Forest	S2	G2		
<i>Reithrodontomys humulis</i>	Eastern Harvest Mouse	S3S4	G5		
<a href="#"><i>Scaphirhynchus albus</i></a>	Pallid Sturgeon	S1	G1	Endangered	LE
<a href="#"><i>Sida elliotii</i></a>	Elliott Sida	SH	G4G5		
<a href="#"><i>Sorex longirostris</i></a>	Southeastern Shrew	S2S3	G5		
<a href="#"><i>Spruce pine-hardwood mesic flatwoods</i></a>	Spruce Pine-hardwood Mesic Flatwoods	S2	G1G2		
<i>State champion tree</i>	State Champion Tree	SNR	GNR		
<i>Stewartia malacodendron</i>	Silky Camellia	S2S3	G4		
<a href="#"><i>Sweetgum-water oak bottomland forest</i></a>	Sweetgum-water Oak Bottomland Forest	S4	G4?		



**Rare, Threatened, & Endangered Species & Natural Communities  
Tracked by the Louisiana Natural Heritage Program  
East Baton Rouge Parish - April 2008**



**PARISH: East Baton Rouge**

Scientific Name	Common Name	State Rank	Global Rank	State Status	Federal Status
<a href="#"><i>Thalita dealbata</i></a>	Powdery Thalia	S2S3	G4		
<a href="#"><i>Trichechus manatus</i></a>	Manatee	SZN	G2	Endangered	LE
<a href="#"><i>Trichomanes petersii</i></a>	Dwarf Filmy-fern	S2	G4G5		

## EXPLANATION OF RANKING CATEGORIES EMPLOYED BY NATURAL HERITAGE PROGRAMS NATIONWIDE

Each element is assigned a single global rank as well as a state rank for each state in which it occurs. Global ranking is done under the guidance of NatureServe, Arlington, VA. State ranks are assigned by each state's Natural Heritage Program, thus a rank for a particular element may vary considerably from state to state. Federal ranks are designated by the U.S. Fish & Wildlife Service under the provisions of the Endangered Species Act of 1973. **DISCLAIMER:** This document is not an official copy of the laws in effect and should not be utilized or relied upon as such. For this reason, the accuracy of the information contained within this document cannot be guaranteed and the reader is cautioned that it is his/her responsibility to be apprised of the laws in effect at any given time. These laws include those contained within the Louisiana Revised Statutes, particularly Title 56, the official regulations of the Louisiana Wildlife and Fisheries Commission, federal laws, and any local or parish ordinances.

### FEDERAL RANKS (USES A FIELD):

LE = Listed Endangered

LT = Listed Threatened

PE = Proposed endangered

PT = Proposed Threatened

C = Candidate

PDL = Proposed for delisting

E (S/A) or T (S/A) = Listed endangered or threatened because of similarity of appearance

XE = Essential experimental population

XN = Nonessential experimental population

No Rank = Usually indicates that the taxon does not have any federal status. However, because of potential lag time between publication in the Federal Register and entry in the central databases and state databases, some taxa may have a status which does not yet appear.

(Rank) = Combination values in parenthesis = The taxon itself is not named in the Federal Register as having U.S. ESA status; however, all of its infraspecific taxa (worldwide) do have official status. The statuses shown in parentheses indicate the statuses that apply to infraspecific taxa or populations within this taxon. *THE SPECIES IS CONSIDERED TO HAVE A COMBINATION STATUS IN LOUISIANA*

(PS) = partial status = Status in only a portion of the species' range. Typically indicated in a "full" species record where an infraspecific taxon or population has U.S. ESA status, but the entire species does not. *THE SPECIES DOES NOT HAVE A STATUS IN LOUISIANA*

(PS) = partial status = Status in only a portion of the species' range. The value of that status appears because the entity with status does not have an individual entry in NatureServe. *THE SPECIES MAY HAVE A STATUS IN LOUISIANA*

### GLOBAL ELEMENT RANKS:

G1 = critically imperiled globally because of extreme rarity (5 or fewer known extant populations) or because of some factor(s) making it especially vulnerable to extinction

G2 = imperiled globally because of rarity (6 to 20 known extant populations) or

because of some factor(s) making it very vulnerable to extinction throughout its range

G3 = either very rare and local throughout its range or found locally (even abundantly at some of its locations) in a restricted range (e.g., a single physiographic region) or because of other factors making it vulnerable to extinction throughout its range (21 to 100 known extant populations)

G4 = apparently secure globally, though it may be quite rare in parts of its range, especially at the periphery (100 to 1000 known extant populations)

G5 = demonstrably secure globally, although it may be quite rare in parts of its range, especially at the periphery (1000+ known extant populations)

GH = of historical occurrence throughout its range; i.e., formerly part of the established biota, with the possibility that it may be rediscovered (e.g., Bachman's Warbler)

GU = possibly in peril range-wide, but status uncertain; need more information

G? = rank uncertain. Or a range (e.g., G3G5) delineates the limits of uncertainty

GQ = uncertain taxonomic status

GX = believed to be extinct throughout its range (e.g., Passenger Pigeon) with virtually no likelihood that it will be rediscovered

T = subspecies or variety rank (e.g., G5T4 applies to a subspecies with a global species rank of G5, but with a subspecies rank of G4)

### STATE ELEMENT RANKS:

S1 = critically imperiled in Louisiana because of extreme rarity (5 or fewer known extant populations) or because of some factor(s) making it especially vulnerable to extirpation

S2 = imperiled in Louisiana because of rarity (6 to 20 known extant populations) or because of some factor(s) making it very vulnerable to extirpation

S3 = rare and local throughout the state or found locally (even abundantly at some of its locations) in a restricted region of the state, or because of other factors making it vulnerable to extirpation (21 to 100 known extant populations)

S4 = apparently secure in Louisiana with many occurrences (100 to 1000 known extant populations)

S5 = demonstrably secure in Louisiana (1000+ known extant populations)

(B or N) may be used as a qualifier of numeric ranks and indicating whether the occurrence is breeding or nonbreeding)

SA = accidental in Louisiana, including species (usually birds or butterflies) recorded once or twice or only at great intervals hundreds or even thousands of miles outside their usual range

SH = of historical occurrence in Louisiana, but no recent records verified within the last 20 years; formerly part of the established biota, possibly still persisting

SR = reported from Louisiana, but without conclusive evidence to accept or reject the report

SU = possibly in peril in Louisiana, but status uncertain; need more information

SX = believed to be extirpated from Louisiana

SZ = transient species in which no specific consistent area of occurrence is identifiable

### STATE PROTECTION STATUS:

State status are contained in Title 56 of the Louisiana Revised Statutes as well as relevant rules and regulations adopted by the Louisiana Wildlife and Fisheries Commission and the Secretary of the Department of Wildlife and Fisheries. The Secretary of the Department of Wildlife and Fisheries is authorized to implement additional restrictions in emergency situations in order to protect fish and wildlife resources.

Endangered = Taking or harassment of these species is a violation of state and federal laws.

Threatened = Taking or harassment of these species is a violation of state and federal laws.

Threatened/Endangered = Taking or harassment of these species is a violation of state and federal laws.

Prohibited = Possession of these species is prohibited. No legal harvest or possession.

Restricted Harvest = There are restrictions regarding the taking and possession of these species



*APPENDIX E*  
*EDR Report: Executive Summary*

---

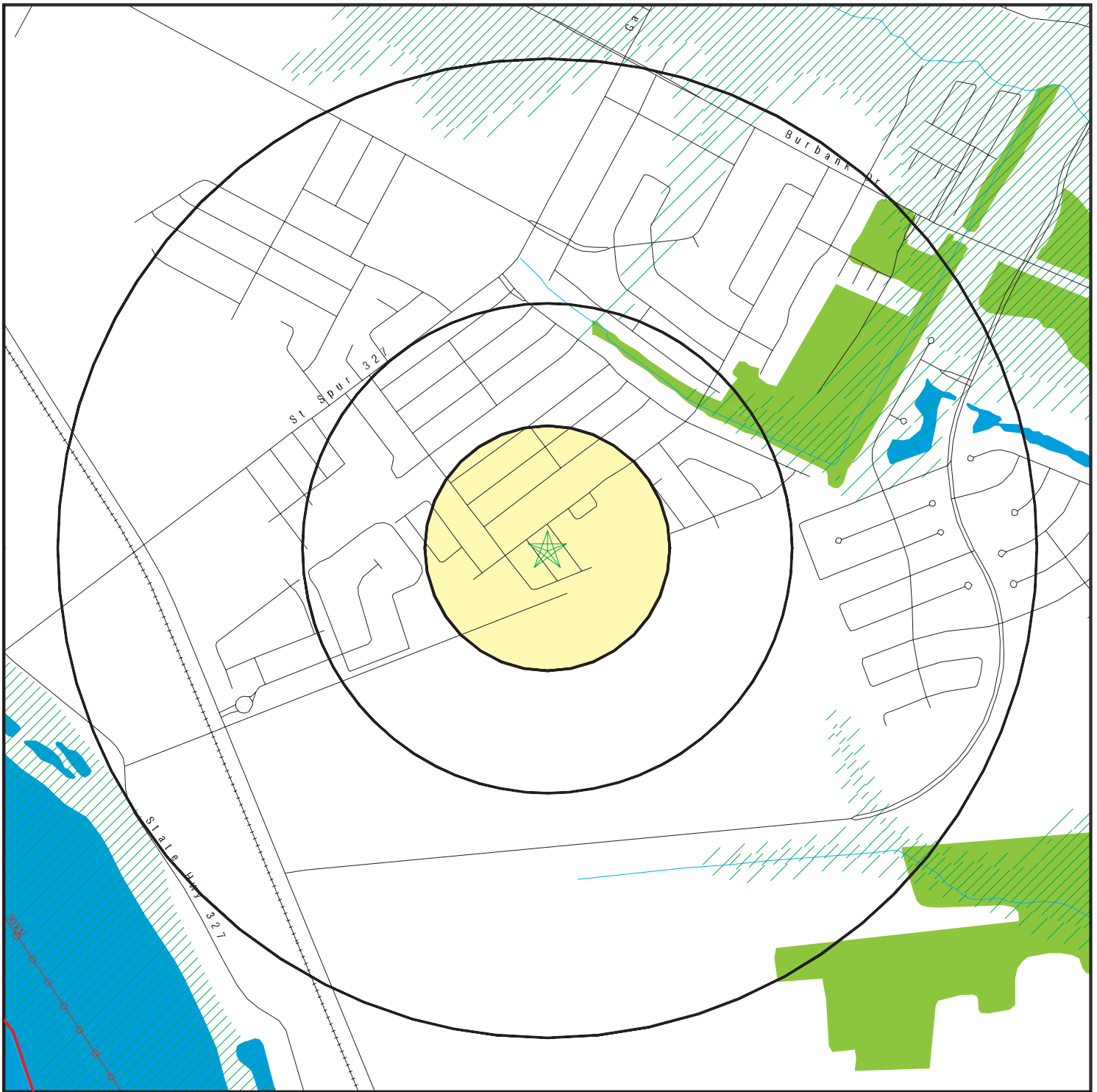
---

## EXECUTIVE SUMMARY

Due to poor or inadequate address information, the following sites were not mapped:

<u>Site Name</u>	<u>Database(s)</u>
ANSELMO DEVELOPMENT GROUP LLC - ANSELMO CONDOMINIUM	NPDES
HIDDEN COVE SUBDV - THE RESOURCE FOUNDATION INC	NPDES
SANFIL LAND RECLAMATION	SHWS
CHEVRON USA BATON ROUGE PLANT	SHWS
DEVILS SWAMP	SHWS
RONALD A. COCO INC.	SHWS
CONSTRUCTION SITE ON STARING LANE BETW. KINGCREST	SPILLS
BOCAGE LAKE SUBDIVISION CONSTRUCTION SITE	SPILLS
ON SITE FUEL SERVICE	SPILLS
FORMER CLAUDE PENN SITE ON FRENCHTOWN ROAD	SPILLS
NORTH 10TH STREET DRUMS	CERCLIS
LSU SOUTH CAMPUS - STAGING SITE	SWF/LF
EBR PARISH - ESSEN PARK LN SITE	DEBRIS
WARD'S CREEK SITE	DEBRIS
WHITNEY BANK BOCAGE SITE	VCP
COOLANT TOWER ON SITE	ERNS
CREWS ON SITE	ERNS
FLANGE SEPARATED FROM TRANSFER LINE REMEDIATION SITE/FLANGE	ERNS
PETRO PROCESSORS SUPER- FUND SITE ON HWY 61	ERNS
SPILL RESPONSE CONTRACTOR IS ON SITE / TAKING SAMPLES TO CHE	ERNS

# OVERVIEW MAP - 2383044.2s



- ★ Target Property
- ▲ Sites at elevations higher than or equal to the target property
- ◆ Sites at elevations lower than the target property
- ▲ Manufactured Gas Plants
- ☒ National Priority List Sites
- ☒ Dept. Defense Sites

- ☒ Indian Reservations BIA
- County Boundary
- ⚡ Power transmission lines
- ⚡ Oil & Gas pipelines
- ▨ 100-year flood zone
- ▨ 500-year flood zone
- ▨ National Wetland Inventory

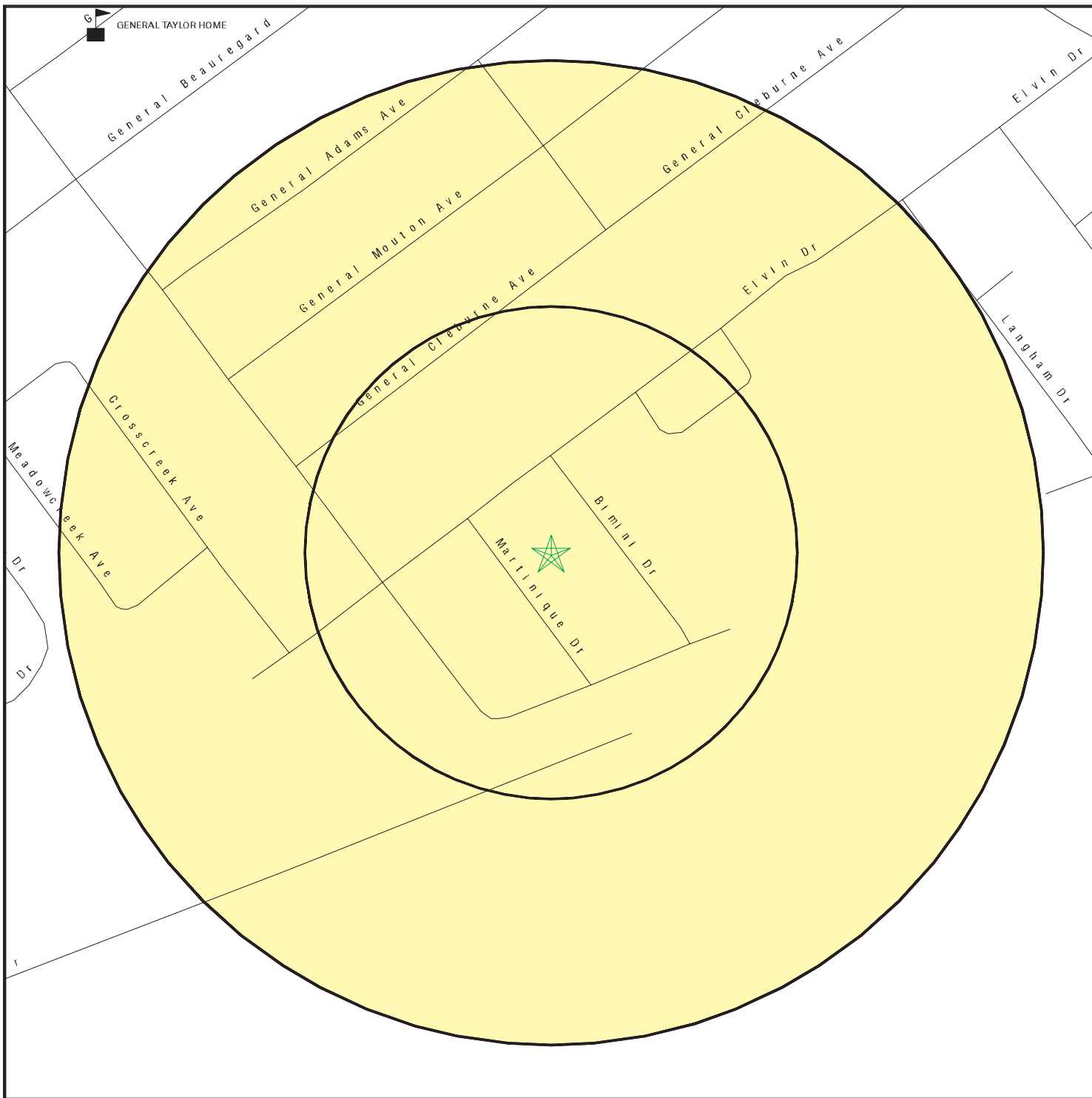
This report includes Interactive Map Layers to display and/or hide map information. The legend includes only those icons for the default map view.

SITE NAME: Hidden Cove Group Site  
 ADDRESS: Hidden Cove Group Site  
 Baton Rouge LA 70810  
 LAT/LONG: 30.3457 / 91.1266

CLIENT: Gulf South Research Corp.  
 CONTACT: Denise Ford  
 INQUIRY #: 2383044.2s  
 DATE: December 19, 2008 9:40 am



# DETAIL MAP - 2383044.2s



- ★ Target Property
- ▲ Sites at elevations higher than or equal to the target property
- ◆ Sites at elevations lower than the target property
- ▲ Manufactured Gas Plants
- Sensitive Receptors
- National Priority List Sites
- Dept. Defense Sites



- Indian Reservations BIA
- Oil & Gas pipelines
- 100-year flood zone
- 500-year flood zone



This report includes Interactive Map Layers to display and/or hide map information. The legend includes only those icons for the default map view.

SITE NAME: Hidden Cove Group Site  
 ADDRESS: Hidden Cove Group Site  
 Baton Rouge LA 70810  
 LAT/LONG: 30.3457 / 91.1266

CLIENT: Gulf South Research Corp.  
 CONTACT: Denise Ford  
 INQUIRY #: 2383044.2s  
 DATE: December 19, 2008 9:40 am

## MAP FINDINGS SUMMARY

Database	Target Property	Search Distance (Miles)	< 1/8	1/8 - 1/4	1/4 - 1/2	1/2 - 1	> 1	Total Plotted
<b><u>FEDERAL RECORDS</u></b>								
NPL		1.000	0	0	0	0	NR	0
Proposed NPL		1.000	0	0	0	0	NR	0
Delisted NPL		1.000	0	0	0	0	NR	0
NPL LIENS	TP		NR	NR	NR	NR	NR	0
CERCLIS		0.500	0	0	0	NR	NR	0
CERC-NFRAP		0.500	0	0	0	NR	NR	0
LIENS 2	TP		NR	NR	NR	NR	NR	0
CORRACTS		1.000	0	0	0	0	NR	0
RCRA-TSDF		0.500	0	0	0	NR	NR	0
RCRA-LQG		0.250	0	0	NR	NR	NR	0
RCRA-SQG		0.250	0	0	NR	NR	NR	0
RCRA-CESQG		0.250	0	0	NR	NR	NR	0
RCRA-NonGen		0.250	0	0	NR	NR	NR	0
US ENG CONTROLS		0.500	0	0	0	NR	NR	0
US INST CONTROL		0.500	0	0	0	NR	NR	0
ERNS	TP		NR	NR	NR	NR	NR	0
HMIRS	TP		NR	NR	NR	NR	NR	0
DOT OPS	TP		NR	NR	NR	NR	NR	0
US CDL	TP		NR	NR	NR	NR	NR	0
US BROWNFIELDS		0.500	0	0	0	NR	NR	0
DOD		1.000	0	0	0	0	NR	0
FUDS		1.000	0	0	0	0	NR	0
LUCIS		0.500	0	0	0	NR	NR	0
CONSENT		1.000	0	0	0	0	NR	0
ROD		1.000	0	0	0	0	NR	0
UMTRA		0.500	0	0	0	NR	NR	0
DEBRIS REGION 9		0.500	0	0	0	NR	NR	0
ODI		0.500	0	0	0	NR	NR	0
MINES		0.250	0	0	NR	NR	NR	0
TRIS	TP		NR	NR	NR	NR	NR	0
TSCA	TP		NR	NR	NR	NR	NR	0
FTTS	TP		NR	NR	NR	NR	NR	0
HIST FTTS	TP		NR	NR	NR	NR	NR	0
SSTS	TP		NR	NR	NR	NR	NR	0
ICIS	TP		NR	NR	NR	NR	NR	0
PADS	TP		NR	NR	NR	NR	NR	0
MLTS	TP		NR	NR	NR	NR	NR	0
RADINFO	TP		NR	NR	NR	NR	NR	0
FINDS	TP		NR	NR	NR	NR	NR	0
RAATS	TP		NR	NR	NR	NR	NR	0
SCRD DRYCLEANERS		0.500	0	0	0	NR	NR	0
<b><u>STATE AND LOCAL RECORDS</u></b>								
SHWS		1.000	0	0	0	0	NR	0
SWF/LF		0.500	0	0	0	NR	NR	0
DEBRIS		0.500	0	0	0	NR	NR	0
AUL		0.500	0	0	0	NR	NR	0

## MAP FINDINGS SUMMARY

Database	Target Property	Search Distance (Miles)	< 1/8	1/8 - 1/4	1/4 - 1/2	1/2 - 1	> 1	Total Plotted
SWRCY		0.500	0	0	0	NR	NR	0
LUST		0.500	0	0	0	NR	NR	0
HIST LUST		0.500	0	0	0	NR	NR	0
UST		0.250	0	0	NR	NR	NR	0
LIENS		TP	NR	NR	NR	NR	NR	0
SPILLS		TP	NR	NR	NR	NR	NR	0
VCP		0.500	0	0	0	NR	NR	0
DRYCLEANERS		0.250	0	0	NR	NR	NR	0
NPDES		TP	NR	NR	NR	NR	NR	0
<b><u>TRIBAL RECORDS</u></b>								
INDIAN RESERV		1.000	0	0	0	0	NR	0
INDIAN ODI		0.500	0	0	0	NR	NR	0
INDIAN LUST		0.500	0	0	0	NR	NR	0
INDIAN UST		0.250	0	0	NR	NR	NR	0
INDIAN VCP		0.500	0	0	0	NR	NR	0
<b><u>EDR PROPRIETARY RECORDS</u></b>								
Manufactured Gas Plants		1.000	0	0	0	0	NR	0

**NOTES:**

TP = Target Property

NR = Not Requested at this Search Distance

Sites may be listed in more than one database

Map ID  
Direction  
Distance  
Elevation

MAP FINDINGS

Site

Database(s)

EDR ID Number  
EPA ID Number

NO SITES FOUND

ORPHAN SUMMARY

City	EDR ID	Site Name	Site Address	Zip	Database(s)
BATON ROUGE	1011845477	NORTH 10TH STREET DRUMS	10TH STREET 1 BLOCK NORTH OF SPANISH		CERCLIS
BATON ROUGE	S105201203	SANFIL LAND RECLAMATION	HWY 61 856 MOORE ST		SHWS
BATON ROUGE	S105529262	WHITNEY BANK BOGAGE SITE	7976 / 8006 JEFFERSON HWY.		VCP
BATON ROUGE	S108994974	ANSELMO DEVELOPMENT GROUP LLC - ANSELMO CONDOMINIUM	ANSELMO LN	70810	NPDES
BATON ROUGE	S108614051	CONSTRUCTION SITE ON STARING LANE BETW. KINGCREST	CONSTRUCTION SITE ON STARING LANE BETW. KINGCREST		SPILLS
BATON ROUGE	99653143	COOLANT TOWER ON SITE	COOLANT TOWER ON SITE		ERNS
BATON ROUGE	S108615682	BOCAGE LAKE SUBDIVISION CONSTRUCTION SITE	CORPORATE BLVD.		SPILLS
BATON ROUGE	96504229	CREWS ON SITE	CREWS ON SITE		ERNS
BATON ROUGE	S108618469	ON SITE FUEL SERVICE	CYPRESS POINT SUBDIVISION OFF ESSEN LANE FROM NORT		SPILLS
BATON ROUGE	S108995066	HIDDEN COVE SUBDV - THE RESOURCE FOUNDATION INC	ELVIN DR, BIMINI DR, ST CROIX / PASCAGOULA DR	70810	NPDES
BATON ROUGE	S109277993	EBR PARISH - ESSEN PARK LN SITE	ESSEN PARK LN		DEBRIS
BATON ROUGE	S106167870	CHEVRON USA BATON ROUGE PLANT	1001 S FIRST ST		SHWS
BATON ROUGE	96478028	FLANGE SEPARATED FROM TRANSFER LINE REMEDIATION SITE/FLANGE	FLANGE SEPARATED FROM TRANSFER LINE REMEDIATION SITE/FLANGE		ERNS
BATON ROUGE	S108591749	FORMER CLAUDE PENN SITE ON FRENCHTOWN RO	14461 FRENCHTOWN RD. GREENWELL SPRINGS		SPILLS
BATON ROUGE	S109278237	LSU SOUTH CAMPUS - STAGING SITE	GSRI AVE	70820	SWF/LF
BATON ROUGE	S105200973	DEVILS SWAMP	IMMEDIATELY NORTH OF THE BATON ROUGE HARBOR		SHWS
BATON ROUGE	93328875	PETRO PROCESSORS SUPER- FUND SITE ON HWY 61	PETRO PROCESSORS SUPER- FUND SITE ON HWY 61		ERNS
BATON ROUGE	S105201197	RONALD A. COCO INC.	RONALD A COCO INC		SHWS
BATON ROUGE	984505661	SPILL RESPONSE CONTRACTOR IS ON SITE / TAKING SAMPLES TO CHE	SPILL RESPONSE CONTRACTOR IS ON SITE / TAKING SAMPLES TO CHE		ERNS
BATON ROUGE	S109278112	WARD'S CREEK SITE	NORTH WEST OF CORPORATE BLVD @ WARD'S CREEK		DEBRIS



# GOVERNMENT RECORDS SEARCHED / DATA CURRENCY TRACKING

To maintain currency of the following federal and state databases, EDR contacts the appropriate governmental agency on a monthly or quarterly basis, as required.

**Number of Days to Update:** Provides confirmation that EDR is reporting records that have been updated within 90 days from the date the government agency made the information available to the public.

## FEDERAL RECORDS

### NPL: National Priority List

National Priorities List (Superfund). The NPL is a subset of CERCLIS and identifies over 1,200 sites for priority cleanup under the Superfund Program. NPL sites may encompass relatively large areas. As such, EDR provides polygon coverage for over 1,000 NPL site boundaries produced by EPA's Environmental Photographic Interpretation Center (EPIC) and regional EPA offices.

Date of Government Version: 09/29/2008	Source: EPA
Date Data Arrived at EDR: 10/10/2008	Telephone: N/A
Date Made Active in Reports: 11/19/2008	Last EDR Contact: 09/29/2008
Number of Days to Update: 40	Next Scheduled EDR Contact: 01/26/2009
	Data Release Frequency: Quarterly

### NPL Site Boundaries

#### Sources:

EPA's Environmental Photographic Interpretation Center (EPIC)  
Telephone: 202-564-7333

EPA Region 1  
Telephone 617-918-1143

EPA Region 6  
Telephone: 214-655-6659

EPA Region 3  
Telephone 215-814-5418

EPA Region 7  
Telephone: 913-551-7247

EPA Region 4  
Telephone 404-562-8033

EPA Region 8  
Telephone: 303-312-6774

EPA Region 5  
Telephone 312-886-6686

EPA Region 9  
Telephone: 415-947-4246

EPA Region 10  
Telephone 206-553-8665

### Proposed NPL: Proposed National Priority List Sites

A site that has been proposed for listing on the National Priorities List through the issuance of a proposed rule in the Federal Register. EPA then accepts public comments on the site, responds to the comments, and places on the NPL those sites that continue to meet the requirements for listing.

Date of Government Version: 09/29/2008	Source: EPA
Date Data Arrived at EDR: 10/10/2008	Telephone: N/A
Date Made Active in Reports: 11/19/2008	Last EDR Contact: 09/29/2008
Number of Days to Update: 40	Next Scheduled EDR Contact: 01/26/2009
	Data Release Frequency: Quarterly

### DELISTED NPL: National Priority List Deletions

The National Oil and Hazardous Substances Pollution Contingency Plan (NCP) establishes the criteria that the EPA uses to delete sites from the NPL. In accordance with 40 CFR 300.425.(e), sites may be deleted from the NPL where no further response is appropriate.

Date of Government Version: 09/29/2008	Source: EPA
Date Data Arrived at EDR: 10/10/2008	Telephone: N/A
Date Made Active in Reports: 11/19/2008	Last EDR Contact: 09/29/2008
Number of Days to Update: 40	Next Scheduled EDR Contact: 01/26/2009
	Data Release Frequency: Quarterly

# GOVERNMENT RECORDS SEARCHED / DATA CURRENCY TRACKING

## NPL LIENS: Federal Superfund Liens

Federal Superfund Liens. Under the authority granted the USEPA by CERCLA of 1980, the USEPA has the authority to file liens against real property in order to recover remedial action expenditures or when the property owner received notification of potential liability. USEPA compiles a listing of filed notices of Superfund Liens.

Date of Government Version: 10/15/1991	Source: EPA
Date Data Arrived at EDR: 02/02/1994	Telephone: 202-564-4267
Date Made Active in Reports: 03/30/1994	Last EDR Contact: 11/17/2008
Number of Days to Update: 56	Next Scheduled EDR Contact: 02/16/2009
	Data Release Frequency: No Update Planned

## CERCLIS: Comprehensive Environmental Response, Compensation, and Liability Information System

CERCLIS contains data on potentially hazardous waste sites that have been reported to the USEPA by states, municipalities, private companies and private persons, pursuant to Section 103 of the Comprehensive Environmental Response, Compensation, and Liability Act (CERCLA). CERCLIS contains sites which are either proposed to or on the National Priorities List (NPL) and sites which are in the screening and assessment phase for possible inclusion on the NPL.

Date of Government Version: 10/07/2008	Source: EPA
Date Data Arrived at EDR: 10/16/2008	Telephone: 703-412-9810
Date Made Active in Reports: 12/08/2008	Last EDR Contact: 10/16/2008
Number of Days to Update: 53	Next Scheduled EDR Contact: 01/12/2009
	Data Release Frequency: Quarterly

## CERCLIS-NFRAP: CERCLIS No Further Remedial Action Planned

Archived sites are sites that have been removed and archived from the inventory of CERCLIS sites. Archived status indicates that, to the best of EPA's knowledge, assessment at a site has been completed and that EPA has determined no further steps will be taken to list this site on the National Priorities List (NPL), unless information indicates this decision was not appropriate or other considerations require a recommendation for listing at a later time. This decision does not necessarily mean that there is no hazard associated with a given site; it only means that, based upon available information, the location is not judged to be a potential NPL site.

Date of Government Version: 12/03/2007	Source: EPA
Date Data Arrived at EDR: 12/06/2007	Telephone: 703-412-9810
Date Made Active in Reports: 02/20/2008	Last EDR Contact: 12/15/2008
Number of Days to Update: 76	Next Scheduled EDR Contact: 03/16/2009
	Data Release Frequency: Quarterly

## LIENS 2: CERCLA Lien Information

A Federal CERCLA ('Superfund') lien can exist by operation of law at any site or property at which EPA has spent Superfund monies. These monies are spent to investigate and address releases and threatened releases of contamination. CERCLIS provides information as to the identity of these sites and properties.

Date of Government Version: 08/19/2008	Source: Environmental Protection Agency
Date Data Arrived at EDR: 08/29/2008	Telephone: 202-564-6023
Date Made Active in Reports: 09/09/2008	Last EDR Contact: 11/17/2008
Number of Days to Update: 11	Next Scheduled EDR Contact: 02/16/2009
	Data Release Frequency: Varies

## CORRACTS: Corrective Action Report

CORRACTS identifies hazardous waste handlers with RCRA corrective action activity.

Date of Government Version: 09/11/2008	Source: EPA
Date Data Arrived at EDR: 09/19/2008	Telephone: 800-424-9346
Date Made Active in Reports: 10/16/2008	Last EDR Contact: 12/01/2008
Number of Days to Update: 27	Next Scheduled EDR Contact: 03/02/2009
	Data Release Frequency: Quarterly

## RCRA-TSDF: RCRA - Transporters, Storage and Disposal

RCRAInfo is EPA's comprehensive information system, providing access to data supporting the Resource Conservation and Recovery Act (RCRA) of 1976 and the Hazardous and Solid Waste Amendments (HSWA) of 1984. The database includes selective information on sites which generate, transport, store, treat and/or dispose of hazardous waste as defined by the Resource Conservation and Recovery Act (RCRA). Transporters are individuals or entities that move hazardous waste from the generator offsite to a facility that can recycle, treat, store, or dispose of the waste. TSDFs treat, store, or dispose of the waste.

# GOVERNMENT RECORDS SEARCHED / DATA CURRENCY TRACKING

Date of Government Version: 09/10/2008  
Date Data Arrived at EDR: 09/23/2008  
Date Made Active in Reports: 10/16/2008  
Number of Days to Update: 23

Source: Environmental Protection Agency  
Telephone: 214-665-6444  
Last EDR Contact: 11/18/2008  
Next Scheduled EDR Contact: 02/16/2009  
Data Release Frequency: Quarterly

## RCRA-LQG: RCRA - Large Quantity Generators

RCRAInfo is EPA's comprehensive information system, providing access to data supporting the Resource Conservation and Recovery Act (RCRA) of 1976 and the Hazardous and Solid Waste Amendments (HSWA) of 1984. The database includes selective information on sites which generate, transport, store, treat and/or dispose of hazardous waste as defined by the Resource Conservation and Recovery Act (RCRA). Large quantity generators (LQGs) generate over 1,000 kilograms (kg) of hazardous waste, or over 1 kg of acutely hazardous waste per month.

Date of Government Version: 09/10/2008  
Date Data Arrived at EDR: 09/23/2008  
Date Made Active in Reports: 10/16/2008  
Number of Days to Update: 23

Source: Environmental Protection Agency  
Telephone: 214-665-6444  
Last EDR Contact: 11/18/2008  
Next Scheduled EDR Contact: 02/16/2009  
Data Release Frequency: Quarterly

## RCRA-SQG: RCRA - Small Quantity Generators

RCRAInfo is EPA's comprehensive information system, providing access to data supporting the Resource Conservation and Recovery Act (RCRA) of 1976 and the Hazardous and Solid Waste Amendments (HSWA) of 1984. The database includes selective information on sites which generate, transport, store, treat and/or dispose of hazardous waste as defined by the Resource Conservation and Recovery Act (RCRA). Small quantity generators (SQGs) generate between 100 kg and 1,000 kg of hazardous waste per month.

Date of Government Version: 09/10/2008  
Date Data Arrived at EDR: 09/23/2008  
Date Made Active in Reports: 10/16/2008  
Number of Days to Update: 23

Source: Environmental Protection Agency  
Telephone: 214-665-6444  
Last EDR Contact: 11/18/2008  
Next Scheduled EDR Contact: 02/16/2009  
Data Release Frequency: Quarterly

## RCRA-CESQG: RCRA - Conditionally Exempt Small Quantity Generators

RCRAInfo is EPA's comprehensive information system, providing access to data supporting the Resource Conservation and Recovery Act (RCRA) of 1976 and the Hazardous and Solid Waste Amendments (HSWA) of 1984. The database includes selective information on sites which generate, transport, store, treat and/or dispose of hazardous waste as defined by the Resource Conservation and Recovery Act (RCRA). Conditionally exempt small quantity generators (CESQGs) generate less than 100 kg of hazardous waste, or less than 1 kg of acutely hazardous waste per month.

Date of Government Version: 09/10/2008  
Date Data Arrived at EDR: 09/23/2008  
Date Made Active in Reports: 10/16/2008  
Number of Days to Update: 23

Source: Environmental Protection Agency  
Telephone: 214-665-6444  
Last EDR Contact: 11/18/2008  
Next Scheduled EDR Contact: 02/16/2009  
Data Release Frequency: Varies

## RCRA-NonGen: RCRA - Non Generators

RCRAInfo is EPA's comprehensive information system, providing access to data supporting the Resource Conservation and Recovery Act (RCRA) of 1976 and the Hazardous and Solid Waste Amendments (HSWA) of 1984. The database includes selective information on sites which generate, transport, store, treat and/or dispose of hazardous waste as defined by the Resource Conservation and Recovery Act (RCRA). Non-Generators do not presently generate hazardous waste.

Date of Government Version: 09/10/2008  
Date Data Arrived at EDR: 09/23/2008  
Date Made Active in Reports: 10/16/2008  
Number of Days to Update: 23

Source: Environmental Protection Agency  
Telephone: 214-665-6444  
Last EDR Contact: 11/18/2008  
Next Scheduled EDR Contact: 02/16/2009  
Data Release Frequency: Varies

# GOVERNMENT RECORDS SEARCHED / DATA CURRENCY TRACKING

## US ENG CONTROLS: Engineering Controls Sites List

A listing of sites with engineering controls in place. Engineering controls include various forms of caps, building foundations, liners, and treatment methods to create pathway elimination for regulated substances to enter environmental media or effect human health.

Date of Government Version: 10/06/2008	Source: Environmental Protection Agency
Date Data Arrived at EDR: 10/17/2008	Telephone: 703-603-0695
Date Made Active in Reports: 12/08/2008	Last EDR Contact: 09/29/2008
Number of Days to Update: 52	Next Scheduled EDR Contact: 12/29/2008
	Data Release Frequency: Varies

## US INST CONTROL: Sites with Institutional Controls

A listing of sites with institutional controls in place. Institutional controls include administrative measures, such as groundwater use restrictions, construction restrictions, property use restrictions, and post remediation care requirements intended to prevent exposure to contaminants remaining on site. Deed restrictions are generally required as part of the institutional controls.

Date of Government Version: 10/06/2008	Source: Environmental Protection Agency
Date Data Arrived at EDR: 10/17/2008	Telephone: 703-603-0695
Date Made Active in Reports: 12/08/2008	Last EDR Contact: 06/30/2008
Number of Days to Update: 52	Next Scheduled EDR Contact: 09/29/2008
	Data Release Frequency: Varies

## ERNS: Emergency Response Notification System

Emergency Response Notification System. ERNS records and stores information on reported releases of oil and hazardous substances.

Date of Government Version: 12/31/2007	Source: National Response Center, United States Coast Guard
Date Data Arrived at EDR: 01/23/2008	Telephone: 202-267-2180
Date Made Active in Reports: 03/17/2008	Last EDR Contact: 10/21/2008
Number of Days to Update: 54	Next Scheduled EDR Contact: 01/19/2009
	Data Release Frequency: Annually

## HMIRS: Hazardous Materials Information Reporting System

Hazardous Materials Incident Report System. HMIRS contains hazardous material spill incidents reported to DOT.

Date of Government Version: 09/30/2008	Source: U.S. Department of Transportation
Date Data Arrived at EDR: 10/16/2008	Telephone: 202-366-4555
Date Made Active in Reports: 11/19/2008	Last EDR Contact: 10/16/2008
Number of Days to Update: 34	Next Scheduled EDR Contact: 01/12/2009
	Data Release Frequency: Annually

## DOT OPS: Incident and Accident Data

Department of Transportation, Office of Pipeline Safety Incident and Accident data.

Date of Government Version: 05/14/2008	Source: Department of Transportation, Office of Pipeline Safety
Date Data Arrived at EDR: 05/28/2008	Telephone: 202-366-4595
Date Made Active in Reports: 08/08/2008	Last EDR Contact: 11/26/2008
Number of Days to Update: 72	Next Scheduled EDR Contact: 02/23/2009
	Data Release Frequency: Varies

## CDL: Clandestine Drug Labs

A listing of clandestine drug lab locations. The U.S. Department of Justice ("the Department") provides this web site as a public service. It contains addresses of some locations where law enforcement agencies reported they found chemicals or other items that indicated the presence of either clandestine drug laboratories or dumpsites. In most cases, the source of the entries is not the Department, and the Department has not verified the entry and does not guarantee its accuracy. Members of the public must verify the accuracy of all entries by, for example, contacting local law enforcement and local health departments.

# GOVERNMENT RECORDS SEARCHED / DATA CURRENCY TRACKING

Date of Government Version: 09/01/2007  
Date Data Arrived at EDR: 12/03/2007  
Date Made Active in Reports: 12/28/2007  
Number of Days to Update: 25

Source: Drug Enforcement Administration  
Telephone: 202-307-1000  
Last EDR Contact: 10/31/2008  
Next Scheduled EDR Contact: 12/22/2008  
Data Release Frequency: Quarterly

## US BROWNFIELDS: A Listing of Brownfields Sites

Included in the listing are brownfields properties addresses by Cooperative Agreement Recipients and brownfields properties addressed by Targeted Brownfields Assessments. Targeted Brownfields Assessments-EPA's Targeted Brownfields Assessments (TBA) program is designed to help states, tribes, and municipalities--especially those without EPA Brownfields Assessment Demonstration Pilots--minimize the uncertainties of contamination often associated with brownfields. Under the TBA program, EPA provides funding and/or technical assistance for environmental assessments at brownfields sites throughout the country. Targeted Brownfields Assessments supplement and work with other efforts under EPA's Brownfields Initiative to promote cleanup and redevelopment of brownfields. Cooperative Agreement Recipients-States, political subdivisions, territories, and Indian tribes become Brownfields Cleanup Revolving Loan Fund (BCRLF) cooperative agreement recipients when they enter into BCRLF cooperative agreements with the U.S. EPA. EPA selects BCRLF cooperative agreement recipients based on a proposal and application process. BCRLF cooperative agreement recipients must use EPA funds provided through BCRLF cooperative agreement for specified brownfields-related cleanup activities.

Date of Government Version: 07/01/2008  
Date Data Arrived at EDR: 08/25/2008  
Date Made Active in Reports: 09/09/2008  
Number of Days to Update: 15

Source: Environmental Protection Agency  
Telephone: 202-566-2777  
Last EDR Contact: 10/16/2008  
Next Scheduled EDR Contact: 01/12/2009  
Data Release Frequency: Semi-Annually

## DOD: Department of Defense Sites

This data set consists of federally owned or administered lands, administered by the Department of Defense, that have any area equal to or greater than 640 acres of the United States, Puerto Rico, and the U.S. Virgin Islands.

Date of Government Version: 12/31/2005  
Date Data Arrived at EDR: 11/10/2006  
Date Made Active in Reports: 01/11/2007  
Number of Days to Update: 62

Source: USGS  
Telephone: 703-692-8801  
Last EDR Contact: 11/07/2008  
Next Scheduled EDR Contact: 02/02/2009  
Data Release Frequency: Semi-Annually

## FUDS: Formerly Used Defense Sites

The listing includes locations of Formerly Used Defense Sites properties where the US Army Corps of Engineers is actively working or will take necessary cleanup actions.

Date of Government Version: 12/31/2007  
Date Data Arrived at EDR: 09/05/2008  
Date Made Active in Reports: 09/23/2008  
Number of Days to Update: 18

Source: U.S. Army Corps of Engineers  
Telephone: 202-528-4285  
Last EDR Contact: 09/05/2008  
Next Scheduled EDR Contact: 12/29/2008  
Data Release Frequency: Varies

## LUCIS: Land Use Control Information System

LUCIS contains records of land use control information pertaining to the former Navy Base Realignment and Closure properties.

Date of Government Version: 12/09/2005  
Date Data Arrived at EDR: 12/11/2006  
Date Made Active in Reports: 01/11/2007  
Number of Days to Update: 31

Source: Department of the Navy  
Telephone: 843-820-7326  
Last EDR Contact: 12/08/2008  
Next Scheduled EDR Contact: 03/09/2009  
Data Release Frequency: Varies

## CONSENT: Superfund (CERCLA) Consent Decrees

Major legal settlements that establish responsibility and standards for cleanup at NPL (Superfund) sites. Released periodically by United States District Courts after settlement by parties to litigation matters.



# GOVERNMENT RECORDS SEARCHED / DATA CURRENCY TRACKING

Date of Government Version: 04/25/2008  
Date Data Arrived at EDR: 06/12/2008  
Date Made Active in Reports: 08/25/2008  
Number of Days to Update: 74

Source: Department of Justice, Consent Decree Library  
Telephone: Varies  
Last EDR Contact: 12/17/2008  
Next Scheduled EDR Contact: 01/19/2009  
Data Release Frequency: Varies

## ROD: Records Of Decision

Record of Decision. ROD documents mandate a permanent remedy at an NPL (Superfund) site containing technical and health information to aid in the cleanup.

Date of Government Version: 06/18/2008  
Date Data Arrived at EDR: 07/11/2008  
Date Made Active in Reports: 08/25/2008  
Number of Days to Update: 45

Source: EPA  
Telephone: 703-416-0223  
Last EDR Contact: 09/29/2008  
Next Scheduled EDR Contact: 12/29/2008  
Data Release Frequency: Annually

## UMTRA: Uranium Mill Tailings Sites

Uranium ore was mined by private companies for federal government use in national defense programs. When the mills shut down, large piles of the sand-like material (mill tailings) remain after uranium has been extracted from the ore. Levels of human exposure to radioactive materials from the piles are low; however, in some cases tailings were used as construction materials before the potential health hazards of the tailings were recognized.

Date of Government Version: 07/13/2007  
Date Data Arrived at EDR: 12/03/2007  
Date Made Active in Reports: 01/24/2008  
Number of Days to Update: 52

Source: Department of Energy  
Telephone: 505-845-0011  
Last EDR Contact: 12/17/2008  
Next Scheduled EDR Contact: 03/16/2009  
Data Release Frequency: Varies

## ODI: Open Dump Inventory

An open dump is defined as a disposal facility that does not comply with one or more of the Part 257 or Part 258 Subtitle D Criteria.

Date of Government Version: 06/30/1985  
Date Data Arrived at EDR: 08/09/2004  
Date Made Active in Reports: 09/17/2004  
Number of Days to Update: 39

Source: Environmental Protection Agency  
Telephone: 800-424-9346  
Last EDR Contact: 06/09/2004  
Next Scheduled EDR Contact: N/A  
Data Release Frequency: No Update Planned

## DEBRIS REGION 9: Torres Martinez Reservation Illegal Dump Site Locations

A listing of illegal dump sites location on the Torres Martinez Indian Reservation located in eastern Riverside County and northern Imperial County, California.

Date of Government Version: 03/25/2008  
Date Data Arrived at EDR: 04/17/2008  
Date Made Active in Reports: 05/15/2008  
Number of Days to Update: 28

Source: EPA, Region 9  
Telephone: 415-972-3336  
Last EDR Contact: 09/22/2008  
Next Scheduled EDR Contact: 12/22/2008  
Data Release Frequency: Varies

## MINES: Mines Master Index File

Contains all mine identification numbers issued for mines active or opened since 1971. The data also includes violation information.

Date of Government Version: 08/07/2008  
Date Data Arrived at EDR: 09/23/2008  
Date Made Active in Reports: 10/16/2008  
Number of Days to Update: 23

Source: Department of Labor, Mine Safety and Health Administration  
Telephone: 303-231-5959  
Last EDR Contact: 09/23/2008  
Next Scheduled EDR Contact: 12/22/2008  
Data Release Frequency: Semi-Annually

## TRIS: Toxic Chemical Release Inventory System

Toxic Release Inventory System. TRIS identifies facilities which release toxic chemicals to the air, water and land in reportable quantities under SARA Title III Section 313.

# GOVERNMENT RECORDS SEARCHED / DATA CURRENCY TRACKING

Date of Government Version: 12/31/2006  
Date Data Arrived at EDR: 02/29/2008  
Date Made Active in Reports: 04/18/2008  
Number of Days to Update: 49

Source: EPA  
Telephone: 202-566-0250  
Last EDR Contact: 09/19/2008  
Next Scheduled EDR Contact: 12/15/2008  
Data Release Frequency: Annually

## TSCA: Toxic Substances Control Act

Toxic Substances Control Act. TSCA identifies manufacturers and importers of chemical substances included on the TSCA Chemical Substance Inventory list. It includes data on the production volume of these substances by plant site.

Date of Government Version: 12/31/2002  
Date Data Arrived at EDR: 04/14/2006  
Date Made Active in Reports: 05/30/2006  
Number of Days to Update: 46

Source: EPA  
Telephone: 202-260-5521  
Last EDR Contact: 10/14/2008  
Next Scheduled EDR Contact: 01/12/2009  
Data Release Frequency: Every 4 Years

FTTS: FIFRA/ TSCA Tracking System - FIFRA (Federal Insecticide, Fungicide, & Rodenticide Act)/TSCA (Toxic Substances Control Act)  
FTTS tracks administrative cases and pesticide enforcement actions and compliance activities related to FIFRA, TSCA and EPCRA (Emergency Planning and Community Right-to-Know Act). To maintain currency, EDR contacts the Agency on a quarterly basis.

Date of Government Version: 10/08/2008  
Date Data Arrived at EDR: 10/17/2008  
Date Made Active in Reports: 12/08/2008  
Number of Days to Update: 52

Source: EPA/Office of Prevention, Pesticides and Toxic Substances  
Telephone: 202-566-1667  
Last EDR Contact: 12/15/2008  
Next Scheduled EDR Contact: 03/16/2009  
Data Release Frequency: Quarterly

FTTS INSP: FIFRA/ TSCA Tracking System - FIFRA (Federal Insecticide, Fungicide, & Rodenticide Act)/TSCA (Toxic Substances Control Act)  
A listing of FIFRA/TSCA Tracking System (FTTS) inspections and enforcements.

Date of Government Version: 10/08/2008  
Date Data Arrived at EDR: 10/17/2008  
Date Made Active in Reports: 12/08/2008  
Number of Days to Update: 52

Source: EPA  
Telephone: 202-566-1667  
Last EDR Contact: 12/15/2008  
Next Scheduled EDR Contact: 03/16/2009  
Data Release Frequency: Quarterly

## HIST FTTS: FIFRA/TSCA Tracking System Administrative Case Listing

A complete administrative case listing from the FIFRA/TSCA Tracking System (FTTS) for all ten EPA regions. The information was obtained from the National Compliance Database (NCDB). NCDB supports the implementation of FIFRA (Federal Insecticide, Fungicide, and Rodenticide Act) and TSCA (Toxic Substances Control Act). Some EPA regions are now closing out records. Because of that, and the fact that some EPA regions are not providing EPA Headquarters with updated records, it was decided to create a HIST FTTS database. It included records that may not be included in the newer FTTS database updates. This database is no longer updated.

Date of Government Version: 10/19/2006  
Date Data Arrived at EDR: 03/01/2007  
Date Made Active in Reports: 04/10/2007  
Number of Days to Update: 40

Source: Environmental Protection Agency  
Telephone: 202-564-2501  
Last EDR Contact: 12/17/2007  
Next Scheduled EDR Contact: 03/17/2008  
Data Release Frequency: No Update Planned

## HIST FTTS INSP: FIFRA/TSCA Tracking System Inspection & Enforcement Case Listing

A complete inspection and enforcement case listing from the FIFRA/TSCA Tracking System (FTTS) for all ten EPA regions. The information was obtained from the National Compliance Database (NCDB). NCDB supports the implementation of FIFRA (Federal Insecticide, Fungicide, and Rodenticide Act) and TSCA (Toxic Substances Control Act). Some EPA regions are now closing out records. Because of that, and the fact that some EPA regions are not providing EPA Headquarters with updated records, it was decided to create a HIST FTTS database. It included records that may not be included in the newer FTTS database updates. This database is no longer updated.

# GOVERNMENT RECORDS SEARCHED / DATA CURRENCY TRACKING

Date of Government Version: 10/19/2006  
Date Data Arrived at EDR: 03/01/2007  
Date Made Active in Reports: 04/10/2007  
Number of Days to Update: 40

Source: Environmental Protection Agency  
Telephone: 202-564-2501  
Last EDR Contact: 12/17/2008  
Next Scheduled EDR Contact: 03/17/2008  
Data Release Frequency: No Update Planned

## SSTS: Section 7 Tracking Systems

Section 7 of the Federal Insecticide, Fungicide and Rodenticide Act, as amended (92 Stat. 829) requires all registered pesticide-producing establishments to submit a report to the Environmental Protection Agency by March 1st each year. Each establishment must report the types and amounts of pesticides, active ingredients and devices being produced, and those having been produced and sold or distributed in the past year.

Date of Government Version: 12/31/2006  
Date Data Arrived at EDR: 03/14/2008  
Date Made Active in Reports: 04/18/2008  
Number of Days to Update: 35

Source: EPA  
Telephone: 202-564-4203  
Last EDR Contact: 12/04/2008  
Next Scheduled EDR Contact: 01/12/2009  
Data Release Frequency: Annually

## ICIS: Integrated Compliance Information System

The Integrated Compliance Information System (ICIS) supports the information needs of the national enforcement and compliance program as well as the unique needs of the National Pollutant Discharge Elimination System (NPDES) program.

Date of Government Version: 07/31/2008  
Date Data Arrived at EDR: 08/13/2008  
Date Made Active in Reports: 09/09/2008  
Number of Days to Update: 27

Source: Environmental Protection Agency  
Telephone: 202-564-5088  
Last EDR Contact: 10/14/2008  
Next Scheduled EDR Contact: 01/12/2009  
Data Release Frequency: Quarterly

## PADS: PCB Activity Database System

PCB Activity Database. PADS identifies generators, transporters, commercial storers and/or brokers and disposers of PCB's who are required to notify the EPA of such activities.

Date of Government Version: 12/04/2007  
Date Data Arrived at EDR: 02/07/2008  
Date Made Active in Reports: 03/17/2008  
Number of Days to Update: 39

Source: EPA  
Telephone: 202-566-0500  
Last EDR Contact: 09/18/2008  
Next Scheduled EDR Contact: 11/03/2008  
Data Release Frequency: Annually

## MLTS: Material Licensing Tracking System

MLTS is maintained by the Nuclear Regulatory Commission and contains a list of approximately 8,100 sites which possess or use radioactive materials and which are subject to NRC licensing requirements. To maintain currency, EDR contacts the Agency on a quarterly basis.

Date of Government Version: 10/03/2008  
Date Data Arrived at EDR: 10/15/2008  
Date Made Active in Reports: 11/19/2008  
Number of Days to Update: 35

Source: Nuclear Regulatory Commission  
Telephone: 301-415-7169  
Last EDR Contact: 09/29/2008  
Next Scheduled EDR Contact: 12/29/2008  
Data Release Frequency: Quarterly

## RADINFO: Radiation Information Database

The Radiation Information Database (RADINFO) contains information about facilities that are regulated by U.S. Environmental Protection Agency (EPA) regulations for radiation and radioactivity.

Date of Government Version: 10/28/2008  
Date Data Arrived at EDR: 10/29/2008  
Date Made Active in Reports: 12/08/2008  
Number of Days to Update: 40

Source: Environmental Protection Agency  
Telephone: 202-343-9775  
Last EDR Contact: 10/29/2008  
Next Scheduled EDR Contact: 01/26/2009  
Data Release Frequency: Quarterly

# GOVERNMENT RECORDS SEARCHED / DATA CURRENCY TRACKING

## FINDS: Facility Index System/Facility Registry System

Facility Index System. FINDS contains both facility information and 'pointers' to other sources that contain more detail. EDR includes the following FINDS databases in this report: PCS (Permit Compliance System), AIRS (Aerometric Information Retrieval System), DOCKET (Enforcement Docket used to manage and track information on civil judicial enforcement cases for all environmental statutes), FURS (Federal Underground Injection Control), C-DOCKET (Criminal Docket System used to track criminal enforcement actions for all environmental statutes), FFIS (Federal Facilities Information System), STATE (State Environmental Laws and Statutes), and PADS (PCB Activity Data System).

Date of Government Version: 07/01/2008	Source: EPA
Date Data Arrived at EDR: 07/09/2008	Telephone: (214) 665-2200
Date Made Active in Reports: 08/25/2008	Last EDR Contact: 09/29/2008
Number of Days to Update: 47	Next Scheduled EDR Contact: 12/29/2008
	Data Release Frequency: Quarterly

## RAATS: RCRA Administrative Action Tracking System

RCRA Administration Action Tracking System. RAATS contains records based on enforcement actions issued under RCRA pertaining to major violators and includes administrative and civil actions brought by the EPA. For administration actions after September 30, 1995, data entry in the RAATS database was discontinued. EPA will retain a copy of the database for historical records. It was necessary to terminate RAATS because a decrease in agency resources made it impossible to continue to update the information contained in the database.

Date of Government Version: 04/17/1995	Source: EPA
Date Data Arrived at EDR: 07/03/1995	Telephone: 202-564-4104
Date Made Active in Reports: 08/07/1995	Last EDR Contact: 06/02/2008
Number of Days to Update: 35	Next Scheduled EDR Contact: 09/01/2008
	Data Release Frequency: No Update Planned

## BRS: Biennial Reporting System

The Biennial Reporting System is a national system administered by the EPA that collects data on the generation and management of hazardous waste. BRS captures detailed data from two groups: Large Quantity Generators (LQG) and Treatment, Storage, and Disposal Facilities.

Date of Government Version: 12/31/2005	Source: EPA/NTIS
Date Data Arrived at EDR: 03/06/2007	Telephone: 800-424-9346
Date Made Active in Reports: 04/13/2007	Last EDR Contact: 12/09/2008
Number of Days to Update: 38	Next Scheduled EDR Contact: 03/09/2009
	Data Release Frequency: Biennially

## SCRD DRYCLEANERS: State Coalition for Remediation of Drycleaners Listing

The State Coalition for Remediation of Drycleaners was established in 1998, with support from the U.S. EPA Office of Superfund Remediation and Technology Innovation. It is comprised of representatives of states with established drycleaner remediation programs. Currently the member states are Alabama, Connecticut, Florida, Illinois, Kansas, Minnesota, Missouri, North Carolina, Oregon, South Carolina, Tennessee, Texas, and Wisconsin.

Date of Government Version: 09/08/2008	Source: Environmental Protection Agency
Date Data Arrived at EDR: 09/10/2008	Telephone: 615-532-8599
Date Made Active in Reports: 09/23/2008	Last EDR Contact: 12/08/2008
Number of Days to Update: 13	Next Scheduled EDR Contact: 02/09/2009
	Data Release Frequency: Varies

## STATE AND LOCAL RECORDS

### SHWS: Potential and Confirmed Sites List

Confirmed status denotes that assessments have been performed and a determination made that (1) hazardous waste(s) or substance(s) are present at the site and (2) these sites are under the jurisdiction of the LDEQ/RSD. Potential status is an indicator that sites are either waiting to be assessed or the assessment is in progress.

Date of Government Version: 11/06/2008	Source: Department of Environmental Quality
Date Data Arrived at EDR: 12/08/2008	Telephone: 225-219-3181
Date Made Active in Reports: 12/17/2008	Last EDR Contact: 11/10/2008
Number of Days to Update: 9	Next Scheduled EDR Contact: 02/09/2009
	Data Release Frequency: Quarterly

# GOVERNMENT RECORDS SEARCHED / DATA CURRENCY TRACKING

## SWF/LF: Landfill List

Solid Waste Facilities/Landfill Sites. SWF/LF type records typically contain an inventory of solid waste disposal facilities or landfills in a particular state. Depending on the state, these may be active or inactive facilities or open dumps that failed to meet RCRA Subtitle D Section 4004 criteria for solid waste landfills or disposal sites.

Date of Government Version: 11/05/2008  
Date Data Arrived at EDR: 11/13/2008  
Date Made Active in Reports: 11/21/2008  
Number of Days to Update: 8

Source: Department of Environmental Quality  
Telephone: 225-219-3181  
Last EDR Contact: 11/03/2008  
Next Scheduled EDR Contact: 01/05/2009  
Data Release Frequency: Annually

## DEBRIS: LDEQ Approved Debris Sites

A listing of LDEQ Approved Debris Sites where hurricane debris is dumped.

Date of Government Version: 09/12/2008  
Date Data Arrived at EDR: 10/31/2008  
Date Made Active in Reports: 11/21/2008  
Number of Days to Update: 21

Source: Department of Environmental Quality  
Telephone: 225-219-3953  
Last EDR Contact: 09/24/2008  
Next Scheduled EDR Contact: 12/22/2008  
Data Release Frequency: Varies

## AUL: Listing of Institutional and/or Engineering Controls

A notice of contamination (nature and levels of contaminants) and restriction of property to non-residential use are placed in the conveyance records for the property.

Date of Government Version: 05/15/2007  
Date Data Arrived at EDR: 06/05/2007  
Date Made Active in Reports: 07/12/2007  
Number of Days to Update: 37

Source: Department of Environmental Quality  
Telephone: 225-219-3168  
Last EDR Contact: 11/10/2008  
Next Scheduled EDR Contact: 02/09/2009  
Data Release Frequency: Quarterly

## SWRCY: Recycling Directory

A listing of recycling facilities.

Date of Government Version: 10/01/2008  
Date Data Arrived at EDR: 10/08/2008  
Date Made Active in Reports: 11/21/2008  
Number of Days to Update: 44

Source: Department of Environmental Quality  
Telephone: 225-219-3181  
Last EDR Contact: 10/08/2008  
Next Scheduled EDR Contact: 10/06/2008  
Data Release Frequency: Semi-Annually

## LUST: Leaking Underground Storage Tanks

Leaking Underground Storage Tank Incident Reports. LUST records contain an inventory of reported leaking underground storage tank incidents. Not all states maintain these records, and the information stored varies by state.

Date of Government Version: 11/05/2008  
Date Data Arrived at EDR: 12/08/2008  
Date Made Active in Reports: 12/17/2008  
Number of Days to Update: 9

Source: Department of Environmental Quality  
Telephone: 225-219-3181  
Last EDR Contact: 11/10/2008  
Next Scheduled EDR Contact: 02/09/2009  
Data Release Frequency: Varies

## HIST LUST: Underground Storage Tank Case History Incidents

This listing includes detailed information for Leaking Underground Storage Tanks reported through November 1999. It is no longer updated. Current LUST incidents, without detail, can be found in the Leaking Underground Storage Tank Database

Date of Government Version: 11/01/1999  
Date Data Arrived at EDR: 02/16/2000  
Date Made Active in Reports: 05/01/2000  
Number of Days to Update: 75

Source: Department of Environmental Quality  
Telephone: N/A  
Last EDR Contact: 12/04/2001  
Next Scheduled EDR Contact: N/A  
Data Release Frequency: No Update Planned



# GOVERNMENT RECORDS SEARCHED / DATA CURRENCY TRACKING

## UST: Louisiana Underground Storage Tank Database

Registered Underground Storage Tanks. UST's are regulated under Subtitle I of the Resource Conservation and Recovery Act (RCRA) and must be registered with the state department responsible for administering the UST program. Available information varies by state program.

Date of Government Version: 08/18/2008  
Date Data Arrived at EDR: 08/29/2008  
Date Made Active in Reports: 09/09/2008  
Number of Days to Update: 11

Source: Department of Environmental Quality  
Telephone: 225-219-3181  
Last EDR Contact: 11/10/2008  
Next Scheduled EDR Contact: 02/09/2009  
Data Release Frequency: Quarterly

## LIENS: Environmental Liens

An Environmental Lien is a charge, security, or encumbrance upon title to a property to secure the payment of a cost, damage, debt, obligation, or duty arising out of response actions, cleanup, or other remediation of hazardous substances or petroleum products upon a property, including (but not limited to) liens imposed pursuant to CERCLA 42 USC ? 9607(1) and similar state or local laws. In other words: a lien placed upon a property's title due to an environmental condition.

Date of Government Version: 11/17/2008  
Date Data Arrived at EDR: 12/08/2008  
Date Made Active in Reports: 12/17/2008  
Number of Days to Update: 9

Source: Department of Environmental Quality  
Telephone: N/A  
Last EDR Contact: 11/10/2008  
Next Scheduled EDR Contact: 02/09/2009  
Data Release Frequency: Varies

## SPILLS: Emergency Response Section Incidents

Spills and/or releases, to land, reported to the Emergency Response Section.

Date of Government Version: 09/29/2008  
Date Data Arrived at EDR: 10/15/2008  
Date Made Active in Reports: 12/17/2008  
Number of Days to Update: 63

Source: Department of Environmental Quality  
Telephone: 225-219-3620  
Last EDR Contact: 12/08/2008  
Next Scheduled EDR Contact: 03/09/2009  
Data Release Frequency: Varies

## VCP: Voluntary Remediation Program Sites

Sites that have entered the Department of Environmental Quality's Voluntary Remediation Program

Date of Government Version: 08/26/2008  
Date Data Arrived at EDR: 11/12/2008  
Date Made Active in Reports: 11/21/2008  
Number of Days to Update: 9

Source: Department of Environmental Quality  
Telephone: 225-219-3181  
Last EDR Contact: 11/10/2008  
Next Scheduled EDR Contact: 02/09/2009  
Data Release Frequency: Varies

## DRYCLEANERS: Drycleaner Facility Listing

A listing of drycleaner facilities.

Date of Government Version: 01/22/2007  
Date Data Arrived at EDR: 01/30/2007  
Date Made Active in Reports: 03/22/2007  
Number of Days to Update: 51

Source: Department of Environmental Quality  
Telephone: 225-219-3168  
Last EDR Contact: 11/10/2008  
Next Scheduled EDR Contact: 02/09/2009  
Data Release Frequency: Varies

## NPDES: LPDES Permits Database

A listing of sites with a Louisiana Pollutant Discharge Elimination System (LPDES) program issued permit.

Date of Government Version: 08/19/2008  
Date Data Arrived at EDR: 08/29/2008  
Date Made Active in Reports: 09/09/2008  
Number of Days to Update: 11

Source: Department of Environmental Quality  
Telephone: 225-219-3181  
Last EDR Contact: 11/17/2008  
Next Scheduled EDR Contact: 02/16/2009  
Data Release Frequency: Varies

# GOVERNMENT RECORDS SEARCHED / DATA CURRENCY TRACKING

## TRIBAL RECORDS

### INDIAN RESERV: Indian Reservations

This map layer portrays Indian administered lands of the United States that have any area equal to or greater than 640 acres.

Date of Government Version: 12/31/2005	Source: USGS
Date Data Arrived at EDR: 12/08/2006	Telephone: 202-208-3710
Date Made Active in Reports: 01/11/2007	Last EDR Contact: 11/07/2008
Number of Days to Update: 34	Next Scheduled EDR Contact: 02/02/2009
	Data Release Frequency: Semi-Annually

### INDIAN ODI: Report on the Status of Open Dumps on Indian Lands

Location of open dumps on Indian land.

Date of Government Version: 12/31/1998	Source: Environmental Protection Agency
Date Data Arrived at EDR: 12/03/2007	Telephone: 703-308-8245
Date Made Active in Reports: 01/24/2008	Last EDR Contact: 11/24/2008
Number of Days to Update: 52	Next Scheduled EDR Contact: 02/23/2009
	Data Release Frequency: Varies

### INDIAN LUST R10: Leaking Underground Storage Tanks on Indian Land

LUSTs on Indian land in Alaska, Idaho, Oregon and Washington.

Date of Government Version: 08/22/2008	Source: EPA Region 10
Date Data Arrived at EDR: 08/22/2008	Telephone: 206-553-2857
Date Made Active in Reports: 09/09/2008	Last EDR Contact: 11/17/2008
Number of Days to Update: 18	Next Scheduled EDR Contact: 02/16/2009
	Data Release Frequency: Quarterly

### INDIAN LUST R9: Leaking Underground Storage Tanks on Indian Land

LUSTs on Indian land in Arizona, California, New Mexico and Nevada

Date of Government Version: 10/10/2008	Source: Environmental Protection Agency
Date Data Arrived at EDR: 10/10/2008	Telephone: 415-972-3372
Date Made Active in Reports: 10/16/2008	Last EDR Contact: 11/17/2008
Number of Days to Update: 6	Next Scheduled EDR Contact: 02/16/2009
	Data Release Frequency: Quarterly

### INDIAN LUST R8: Leaking Underground Storage Tanks on Indian Land

LUSTs on Indian land in Colorado, Montana, North Dakota, South Dakota, Utah and Wyoming.

Date of Government Version: 08/21/2008	Source: EPA Region 8
Date Data Arrived at EDR: 09/04/2008	Telephone: 303-312-6271
Date Made Active in Reports: 09/09/2008	Last EDR Contact: 11/17/2008
Number of Days to Update: 5	Next Scheduled EDR Contact: 02/16/2009
	Data Release Frequency: Quarterly

### INDIAN LUST R7: Leaking Underground Storage Tanks on Indian Land

LUSTs on Indian land in Iowa, Kansas, and Nebraska

Date of Government Version: 03/17/2008	Source: EPA Region 7
Date Data Arrived at EDR: 03/27/2008	Telephone: 913-551-7003
Date Made Active in Reports: 05/06/2008	Last EDR Contact: 11/19/2008
Number of Days to Update: 40	Next Scheduled EDR Contact: 02/16/2009
	Data Release Frequency: Varies

### INDIAN LUST R4: Leaking Underground Storage Tanks on Indian Land

LUSTs on Indian land in Florida, Mississippi and North Carolina.

Date of Government Version: 06/06/2008	Source: EPA Region 4
Date Data Arrived at EDR: 10/09/2008	Telephone: 404-562-8677
Date Made Active in Reports: 11/19/2008	Last EDR Contact: 11/17/2008
Number of Days to Update: 41	Next Scheduled EDR Contact: 02/16/2009
	Data Release Frequency: Semi-Annually

# GOVERNMENT RECORDS SEARCHED / DATA CURRENCY TRACKING

INDIAN LUST R1: Leaking Underground Storage Tanks on Indian Land  
A listing of leaking underground storage tank locations on Indian Land.

Date of Government Version: 03/12/2008	Source: EPA Region 1
Date Data Arrived at EDR: 03/14/2008	Telephone: 617-918-1313
Date Made Active in Reports: 03/20/2008	Last EDR Contact: 11/17/2008
Number of Days to Update: 6	Next Scheduled EDR Contact: 02/16/2009
	Data Release Frequency: Varies

INDIAN LUST R6: Leaking Underground Storage Tanks on Indian Land  
LUSTs on Indian land in New Mexico and Oklahoma.

Date of Government Version: 09/05/2008	Source: EPA Region 6
Date Data Arrived at EDR: 09/05/2008	Telephone: 214-665-6597
Date Made Active in Reports: 09/23/2008	Last EDR Contact: 11/17/2008
Number of Days to Update: 18	Next Scheduled EDR Contact: 02/16/2009
	Data Release Frequency: Varies

INDIAN UST R1: Underground Storage Tanks on Indian Land  
A listing of underground storage tank locations on Indian Land.

Date of Government Version: 03/12/2008	Source: EPA, Region 1
Date Data Arrived at EDR: 03/14/2008	Telephone: 617-918-1313
Date Made Active in Reports: 03/20/2008	Last EDR Contact: 11/17/2008
Number of Days to Update: 6	Next Scheduled EDR Contact: 02/16/2009
	Data Release Frequency: Varies

INDIAN UST R4: Underground Storage Tanks on Indian Land  
No description is available for this data

Date of Government Version: 06/06/2008	Source: EPA Region 4
Date Data Arrived at EDR: 10/09/2008	Telephone: 404-562-9424
Date Made Active in Reports: 11/19/2008	Last EDR Contact: 11/17/2008
Number of Days to Update: 41	Next Scheduled EDR Contact: 02/16/2009
	Data Release Frequency: Semi-Annually

INDIAN UST R5: Underground Storage Tanks on Indian Land  
No description is available for this data

Date of Government Version: 09/08/2008	Source: EPA Region 5
Date Data Arrived at EDR: 09/19/2008	Telephone: 312-886-6136
Date Made Active in Reports: 10/16/2008	Last EDR Contact: 11/17/2008
Number of Days to Update: 27	Next Scheduled EDR Contact: 02/16/2009
	Data Release Frequency: Varies

INDIAN UST R6: Underground Storage Tanks on Indian Land  
No description is available for this data

Date of Government Version: 09/05/2008	Source: EPA Region 6
Date Data Arrived at EDR: 09/05/2008	Telephone: 214-665-7591
Date Made Active in Reports: 09/23/2008	Last EDR Contact: 11/17/2008
Number of Days to Update: 18	Next Scheduled EDR Contact: 02/16/2009
	Data Release Frequency: Semi-Annually

INDIAN UST R7: Underground Storage Tanks on Indian Land  
No description is available for this data

Date of Government Version: 06/01/2007	Source: EPA Region 7
Date Data Arrived at EDR: 06/14/2007	Telephone: 913-551-7003
Date Made Active in Reports: 07/05/2007	Last EDR Contact: 11/19/2008
Number of Days to Update: 21	Next Scheduled EDR Contact: 02/16/2009
	Data Release Frequency: Varies

# GOVERNMENT RECORDS SEARCHED / DATA CURRENCY TRACKING

## INDIAN UST R8: Underground Storage Tanks on Indian Land

No description is available for this data

Date of Government Version: 08/21/2008  
Date Data Arrived at EDR: 09/04/2008  
Date Made Active in Reports: 09/09/2008  
Number of Days to Update: 5

Source: EPA Region 8  
Telephone: 303-312-6137  
Last EDR Contact: 11/17/2008  
Next Scheduled EDR Contact: 02/16/2009  
Data Release Frequency: Quarterly

## INDIAN UST R9: Underground Storage Tanks on Indian Land

No description is available for this data

Date of Government Version: 09/05/2008  
Date Data Arrived at EDR: 09/19/2008  
Date Made Active in Reports: 10/16/2008  
Number of Days to Update: 27

Source: EPA Region 9  
Telephone: 415-972-3368  
Last EDR Contact: 11/17/2008  
Next Scheduled EDR Contact: 02/16/2009  
Data Release Frequency: Quarterly

## INDIAN UST R10: Underground Storage Tanks on Indian Land

No description is available for this data

Date of Government Version: 08/22/2008  
Date Data Arrived at EDR: 08/22/2008  
Date Made Active in Reports: 09/09/2008  
Number of Days to Update: 18

Source: EPA Region 10  
Telephone: 206-553-2857  
Last EDR Contact: 11/17/2008  
Next Scheduled EDR Contact: 02/16/2009  
Data Release Frequency: Quarterly

## INDIAN VCP R1: Voluntary Cleanup Priority Listing

A listing of voluntary cleanup priority sites located on Indian Land located in Region 1.

Date of Government Version: 04/02/2008  
Date Data Arrived at EDR: 04/22/2008  
Date Made Active in Reports: 05/19/2008  
Number of Days to Update: 27

Source: EPA, Region 1  
Telephone: 617-918-1102  
Last EDR Contact: 10/20/2008  
Next Scheduled EDR Contact: 01/19/2009  
Data Release Frequency: Varies

## INDIAN VCP R7: Voluntary Cleanup Priority Listing

A listing of voluntary cleanup priority sites located on Indian Land located in Region 7.

Date of Government Version: 03/20/2008  
Date Data Arrived at EDR: 04/22/2008  
Date Made Active in Reports: 05/19/2008  
Number of Days to Update: 27

Source: EPA, Region 7  
Telephone: 913-551-7365  
Last EDR Contact: 10/20/2008  
Next Scheduled EDR Contact: 01/19/2009  
Data Release Frequency: Varies

## EDR PROPRIETARY RECORDS

### Manufactured Gas Plants: EDR Proprietary Manufactured Gas Plants

The EDR Proprietary Manufactured Gas Plant Database includes records of coal gas plants (manufactured gas plants) compiled by EDR's researchers. Manufactured gas sites were used in the United States from the 1800's to 1950's to produce a gas that could be distributed and used as fuel. These plants used whale oil, rosin, coal, or a mixture of coal, oil, and water that also produced a significant amount of waste. Many of the byproducts of the gas production, such as coal tar (oily waste containing volatile and non-volatile chemicals), sludges, oils and other compounds are potentially hazardous to human health and the environment. The byproduct from this process was frequently disposed of directly at the plant site and can remain or spread slowly, serving as a continuous source of soil and groundwater contamination.

Date of Government Version: N/A  
Date Data Arrived at EDR: N/A  
Date Made Active in Reports: N/A  
Number of Days to Update: N/A

Source: EDR, Inc.  
Telephone: N/A  
Last EDR Contact: N/A  
Next Scheduled EDR Contact: N/A  
Data Release Frequency: No Update Planned

# GOVERNMENT RECORDS SEARCHED / DATA CURRENCY TRACKING

## COUNTY RECORDS

### ORLEANS COUNTY:

#### Brownfields Inventory

Brownfields are abandoned, idled, or underused industrial or commercial real property, the expansion, redevelopment or reuse of which may be complicated by the presence of or potential presence of a hazardous substance, pollutant, or contaminant.

Date of Government Version: 11/10/2008  
Date Data Arrived at EDR: 11/12/2008  
Date Made Active in Reports: 11/21/2008  
Number of Days to Update: 9

Source: New Orleans Office of Environmental Affairs  
Telephone: 504-658-4070  
Last EDR Contact: 11/10/2008  
Next Scheduled EDR Contact: 02/09/2009  
Data Release Frequency: Quarterly

## OTHER DATABASE(S)

Depending on the geographic area covered by this report, the data provided in these specialty databases may or may not be complete. For example, the existence of wetlands information data in a specific report does not mean that all wetlands in the area covered by the report are included. Moreover, the absence of any reported wetlands information does not necessarily mean that wetlands do not exist in the area covered by the report.

### CT MANIFEST: Hazardous Waste Manifest Data

Facility and manifest data. Manifest is a document that lists and tracks hazardous waste from the generator through transporters to a tsd facility.

Date of Government Version: 12/31/2005  
Date Data Arrived at EDR: 06/15/2007  
Date Made Active in Reports: 08/20/2007  
Number of Days to Update: 66

Source: Department of Environmental Protection  
Telephone: 860-424-3375  
Last EDR Contact: 12/11/2008  
Next Scheduled EDR Contact: 03/09/2009  
Data Release Frequency: Annually

### NY MANIFEST: Facility and Manifest Data

Manifest is a document that lists and tracks hazardous waste from the generator through transporters to a TSD facility.

Date of Government Version: 10/21/2008  
Date Data Arrived at EDR: 11/26/2008  
Date Made Active in Reports: 12/11/2008  
Number of Days to Update: 15

Source: Department of Environmental Conservation  
Telephone: 518-402-8651  
Last EDR Contact: 11/26/2008  
Next Scheduled EDR Contact: 02/23/2009  
Data Release Frequency: Annually

### PA MANIFEST: Manifest Information

Hazardous waste manifest information.

Date of Government Version: 12/31/2007  
Date Data Arrived at EDR: 09/11/2008  
Date Made Active in Reports: 10/02/2008  
Number of Days to Update: 21

Source: Department of Environmental Protection  
Telephone: N/A  
Last EDR Contact: 12/08/2008  
Next Scheduled EDR Contact: 03/09/2009  
Data Release Frequency: Annually

### WI MANIFEST: Manifest Information

Hazardous waste manifest information.

Date of Government Version: 12/31/2007  
Date Data Arrived at EDR: 08/22/2008  
Date Made Active in Reports: 09/08/2008  
Number of Days to Update: 17

Source: Department of Natural Resources  
Telephone: N/A  
Last EDR Contact: 10/06/2008  
Next Scheduled EDR Contact: 01/05/2009  
Data Release Frequency: Annually

## GOVERNMENT RECORDS SEARCHED / DATA CURRENCY TRACKING

Oil/Gas Pipelines: This data was obtained by EDR from the USGS in 1994. It is referred to by USGS as GeoData Digital Line Graphs from 1:100,000-Scale Maps. It was extracted from the transportation category including some oil, but primarily gas pipelines.

### Electric Power Transmission Line Data

Source: PennWell Corporation

Telephone: (800) 823-6277

This map includes information copyrighted by PennWell Corporation. This information is provided on a best effort basis and PennWell Corporation does not guarantee its accuracy nor warrant its fitness for any particular purpose. Such information has been reprinted with the permission of PennWell.

Sensitive Receptors: There are individuals deemed sensitive receptors due to their fragile immune systems and special sensitivity to environmental discharges. These sensitive receptors typically include the elderly, the sick, and children. While the location of all sensitive receptors cannot be determined, EDR indicates those buildings and facilities - schools, daycares, hospitals, medical centers, and nursing homes - where individuals who are sensitive receptors are likely to be located.

### AHA Hospitals:

Source: American Hospital Association, Inc.

Telephone: 312-280-5991

The database includes a listing of hospitals based on the American Hospital Association's annual survey of hospitals.

### Medical Centers: Provider of Services Listing

Source: Centers for Medicare & Medicaid Services

Telephone: 410-786-3000

A listing of hospitals with Medicare provider number, produced by Centers of Medicare & Medicaid Services, a federal agency within the U.S. Department of Health and Human Services.

### Nursing Homes

Source: National Institutes of Health

Telephone: 301-594-6248

Information on Medicare and Medicaid certified nursing homes in the United States.

### Public Schools

Source: National Center for Education Statistics

Telephone: 202-502-7300

The National Center for Education Statistics' primary database on elementary and secondary public education in the United States. It is a comprehensive, annual, national statistical database of all public elementary and secondary schools and school districts, which contains data that are comparable across all states.

### Private Schools

Source: National Center for Education Statistics

Telephone: 202-502-7300

The National Center for Education Statistics' primary database on private school locations in the United States.

Flood Zone Data: This data, available in select counties across the country, was obtained by EDR in 1999 from the Federal Emergency Management Agency (FEMA). Data depicts 100-year and 500-year flood zones as defined by FEMA.

NWI: National Wetlands Inventory. This data, available in select counties across the country, was obtained by EDR in 2002 and 2005 from the U.S. Fish and Wildlife Service.

### Scanned Digital USGS 7.5' Topographic Map (DRG)

Source: United States Geologic Survey

A digital raster graphic (DRG) is a scanned image of a U.S. Geological Survey topographic map. The map images are made by scanning published paper maps on high-resolution scanners. The raster image is georeferenced and fit to the Universal Transverse Mercator (UTM) projection.

# GOVERNMENT RECORDS SEARCHED / DATA CURRENCY TRACKING

## STREET AND ADDRESS INFORMATION

© 2008 Tele Atlas North America, Inc. All rights reserved. This material is proprietary and the subject of copyright protection and other intellectual property rights owned by or licensed to Tele Atlas North America, Inc. The use of this material is subject to the terms of a license agreement. You will be held liable for any unauthorized copying or disclosure of this material.



## GEOCHECK<sup>®</sup> - PHYSICAL SETTING SOURCE ADDENDUM

### TARGET PROPERTY ADDRESS

HIDDEN COVE GROUP SITE  
HIDDEN COVE GROUP SITE  
BATON ROUGE, LA 70810

### TARGET PROPERTY COORDINATES

Latitude (North):	30.34570 - 30° 20' 44.5"
Longitude (West):	91.12665 - 91° 7' 35.9"
Universal Tranverse Mercator:	Zone 15
UTM X (Meters):	680070.2
UTM Y (Meters):	3358399.0
Elevation:	20 ft. above sea level

### USGS TOPOGRAPHIC MAP

Target Property Map:	30091-C2 PLAQUEMINE, LA
Most Recent Revision:	2002

East Map:	30091-C1 SAINT GABRIEL, LA
Most Recent Revision:	1995

EDR's GeoCheck Physical Setting Source Addendum is provided to assist the environmental professional in forming an opinion about the impact of potential contaminant migration.

Assessment of the impact of contaminant migration generally has two principle investigative components:

1. Groundwater flow direction, and
2. Groundwater flow velocity.

Groundwater flow direction may be impacted by surface topography, hydrology, hydrogeology, characteristics of the soil, and nearby wells. Groundwater flow velocity is generally impacted by the nature of the geologic strata.

# GEOCHECK® - PHYSICAL SETTING SOURCE SUMMARY

## GROUNDWATER FLOW DIRECTION INFORMATION

Groundwater flow direction for a particular site is best determined by a qualified environmental professional using site-specific well data. If such data is not reasonably ascertainable, it may be necessary to rely on other sources of information, such as surface topographic information, hydrologic information, hydrogeologic data collected on nearby properties, and regional groundwater flow information (from deep aquifers).

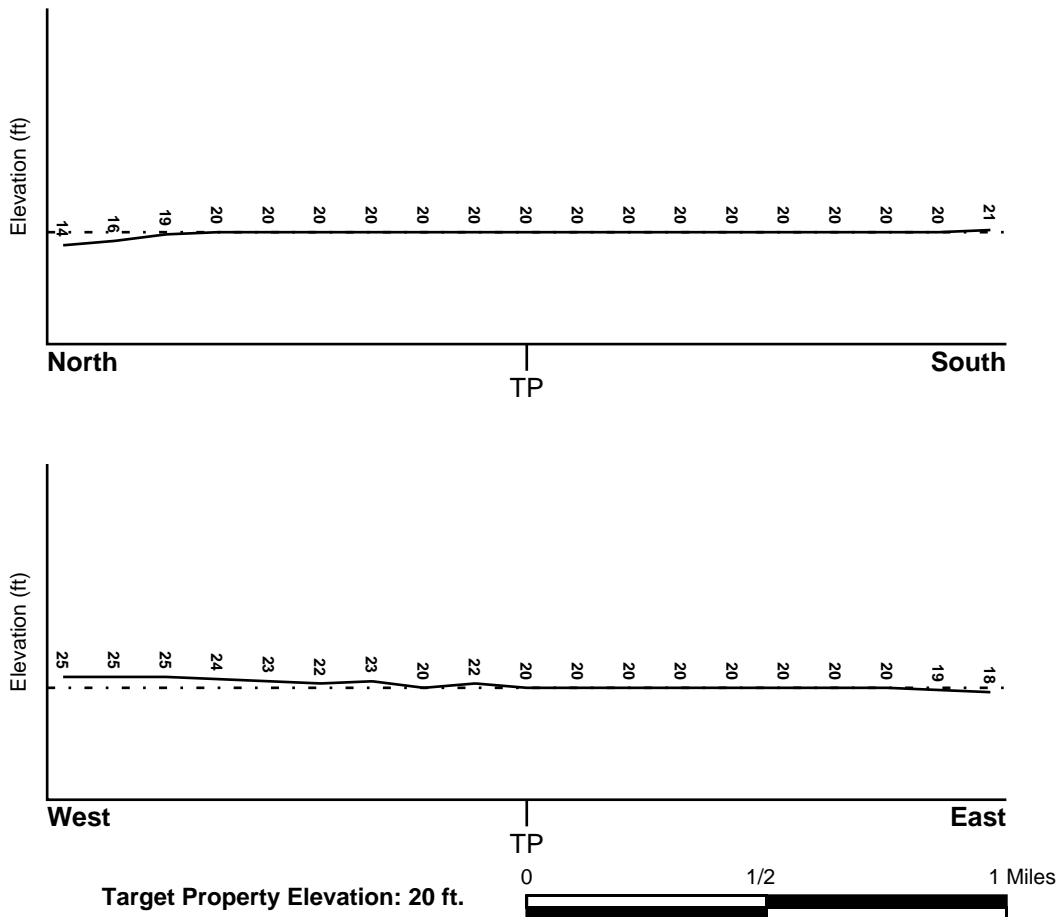
## TOPOGRAPHIC INFORMATION

Surface topography may be indicative of the direction of surficial groundwater flow. This information can be used to assist the environmental professional in forming an opinion about the impact of nearby contaminated properties or, should contamination exist on the target property, what downgradient sites might be impacted.

## TARGET PROPERTY TOPOGRAPHY

General Topographic Gradient: General NE

## SURROUNDING TOPOGRAPHY: ELEVATION PROFILES



Source: Topography has been determined from the USGS 7.5' Digital Elevation Model and should be evaluated on a relative (not an absolute) basis. Relative elevation information between sites of close proximity should be field verified.

# GEOCHECK® - PHYSICAL SETTING SOURCE SUMMARY

## HYDROLOGIC INFORMATION

Surface water can act as a hydrologic barrier to groundwater flow. Such hydrologic information can be used to assist the environmental professional in forming an opinion about the impact of nearby contaminated properties or, should contamination exist on the target property, what downgradient sites might be impacted.

Refer to the Physical Setting Source Map following this summary for hydrologic information (major waterways and bodies of water).

## **FEMA FLOOD ZONE**

<u>Target Property County</u> EAST BATON ROUGE, LA	<u>FEMA Flood Electronic Data</u> YES - refer to the Overview Map and Detail Map
Flood Plain Panel at Target Property:	2200580110D
Additional Panels in search area:	2200580105D 2200580120D

## **NATIONAL WETLAND INVENTORY**

<u>NWI Quad at Target Property</u> PLAQUEMINE	<u>NWI Electronic Data Coverage</u> Not Available
--	--

## HYDROGEOLOGIC INFORMATION

Hydrogeologic information obtained by installation of wells on a specific site can often be an indicator of groundwater flow direction in the immediate area. Such hydrogeologic information can be used to assist the environmental professional in forming an opinion about the impact of nearby contaminated properties or, should contamination exist on the target property, what downgradient sites might be impacted.

### ***Site-Specific Hydrogeological Data\*:***

Search Radius:	1.25 miles
Status:	Not found

## **AQUIFLOW®**

Search Radius: 1.000 Mile.

EDR has developed the AQUIFLOW Information System to provide data on the general direction of groundwater flow at specific points. EDR has reviewed reports submitted by environmental professionals to regulatory authorities at select sites and has extracted the date of the report, groundwater flow direction as determined hydrogeologically, and the depth to water table.

<u>MAP ID</u>	<u>LOCATION FROM TP</u>	<u>GENERAL DIRECTION GROUNDWATER FLOW</u>
Not Reported		

## GEOCHECK® - PHYSICAL SETTING SOURCE SUMMARY

### GROUNDWATER FLOW VELOCITY INFORMATION

Groundwater flow velocity information for a particular site is best determined by a qualified environmental professional using site specific geologic and soil strata data. If such data are not reasonably ascertainable, it may be necessary to rely on other sources of information, including geologic age identification, rock stratigraphic unit and soil characteristics data collected on nearby properties and regional soil information. In general, contaminant plumes move more quickly through sandy-gravelly types of soils than silty-clayey types of soils.

### GEOLOGIC INFORMATION IN GENERAL AREA OF TARGET PROPERTY

Geologic information can be used by the environmental professional in forming an opinion about the relative speed at which contaminant migration may be occurring.

#### ROCK STRATIGRAPHIC UNIT

Era: Cenozoic  
System: Quaternary  
Series: Holocene  
Code: Qh (decoded above as Era, System & Series)

#### GEOLOGIC AGE IDENTIFICATION

Category: Stratified Sequence

Geologic Age and Rock Stratigraphic Unit Source: P.G. Schruben, R.E. Arndt and W.J. Bawiec, Geology of the Conterminous U.S. at 1:2,500,000 Scale - a digital representation of the 1974 P.B. King and H.M. Beikman Map, USGS Digital Data Series DDS - 11 (1994).

### DOMINANT SOIL COMPOSITION IN GENERAL AREA OF TARGET PROPERTY

The U.S. Department of Agriculture's (USDA) Soil Conservation Service (SCS) leads the National Cooperative Soil Survey (NCSS) and is responsible for collecting, storing, maintaining and distributing soil survey information for privately owned lands in the United States. A soil map in a soil survey is a representation of soil patterns in a landscape. Soil maps for STATSGO are compiled by generalizing more detailed (SSURGO) soil survey maps. The following information is based on Soil Conservation Service STATSGO data.

Soil Component Name: COMMERCE  
Soil Surface Texture: silty clay loam  
Hydrologic Group: Class C - Slow infiltration rates. Soils with layers impeding downward movement of water, or soils with moderately fine or fine textures.  
Soil Drainage Class: Somewhat poorly. Soils commonly have a layer with low hydraulic conductivity, wet state high in profile, etc. Depth to water table is 1 to 3 feet.

Hydric Status: Soil does not meet the requirements for a hydric soil.

Corrosion Potential - Uncoated Steel: HIGH

Depth to Bedrock Min: > 60 inches

Depth to Bedrock Max: > 60 inches

## GEOCHECK® - PHYSICAL SETTING SOURCE SUMMARY

Soil Layer Information							
Layer	Boundary		Soil Texture Class	Classification		Permeability Rate (in/hr)	Soil Reaction (pH)
	Upper	Lower		AASHTO Group	Unified Soil		
1	0 inches	10 inches	silty clay loam	Silt-Clay Materials (more than 35 pct. passing No. 200), Clayey Soils.	FINE-GRAINED SOILS, Silts and Clays (liquid limit less than 50%), Lean Clay Soils.	Max: 0.60 Min: 0.20	Max: 8.40 Min: 5.60
2	10 inches	36 inches	silty clay loam	Silt-Clay Materials (more than 35 pct. passing No. 200), Clayey Soils.	FINE-GRAINED SOILS, Silts and Clays (liquid limit less than 50%), Lean Clay Soils.	Max: 0.60 Min: 0.20	Max: 8.40 Min: 6.10
3	36 inches	60 inches	stratified	Silt-Clay Materials (more than 35 pct. passing No. 200), Silty Soils.	FINE-GRAINED SOILS, Silts and Clays (liquid limit less than 50%), Lean Clay. FINE-GRAINED SOILS, Silts and Clays (liquid limit less than 50%), silt.	Max: 2.00 Min: 0.20	Max: 8.40 Min: 6.60

### OTHER SOIL TYPES IN AREA

Based on Soil Conservation Service STATSGO data, the following additional subordinant soil types may appear within the general area of target property.

Soil Surface Textures: silt loam  
clay  
very fine sandy loam

Surficial Soil Types: silt loam  
clay  
very fine sandy loam

Shallow Soil Types: No Other Soil Types

Deeper Soil Types: silt loam  
clay  
very fine sandy loam  
fine sandy loam  
silty clay loam

# GEOCHECK® - PHYSICAL SETTING SOURCE SUMMARY

## LOCAL / REGIONAL WATER AGENCY RECORDS

EDR Local/Regional Water Agency records provide water well information to assist the environmental professional in assessing sources that may impact ground water flow direction, and in forming an opinion about the impact of contaminant migration on nearby drinking water wells.

## WELL SEARCH DISTANCE INFORMATION

<u>DATABASE</u>	<u>SEARCH DISTANCE (miles)</u>
Federal USGS	1.000
Federal FRDS PWS	Nearest PWS within 1 mile
State Database	1.000

## FEDERAL USGS WELL INFORMATION

<u>MAP ID</u>	<u>WELL ID</u>	<u>LOCATION FROM TP</u>
A1	USGS2494264	1/2 - 1 Mile SW
A2	USGS2494265	1/2 - 1 Mile SW
A3	USGS2494263	1/2 - 1 Mile SW
4	USGS2494138	1/2 - 1 Mile WNW
5	USGS2494300	1/2 - 1 Mile WNW
6	USGS2494250	1/2 - 1 Mile SE
7	USGS2494252	1/2 - 1 Mile WSW
B8	USGS2494225	1/2 - 1 Mile SSW
B9	USGS2494224	1/2 - 1 Mile SSW

## FEDERAL FRDS PUBLIC WATER SUPPLY SYSTEM INFORMATION

<u>MAP ID</u>	<u>WELL ID</u>	<u>LOCATION FROM TP</u>
No PWS System Found		

Note: PWS System location is not always the same as well location.

## STATE DATABASE WELL INFORMATION

<u>MAP ID</u>	<u>WELL ID</u>	<u>LOCATION FROM TP</u>
No Wells Found		

## OTHER STATE DATABASE INFORMATION

### STATE OIL/GAS WELL INFORMATION

<u>DISTANCE FROM TP (Miles)</u>	<u>DISTANCE FROM TP (Miles)</u>
1/2 - 1 Mile NNW	1/2 - 1 Mile NW
1/2 - 1 Mile WNW	1/2 - 1 Mile WNW
1/4 - 1/2 Mile NW	1/4 - 1/2 Mile NW
1/2 - 1 Mile WNW	1/2 - 1 Mile WNW
1/2 - 1 Mile WNW	1/8 - 1/4 Mile NNW
1/8 - 1/4 Mile NNW	1/2 - 1 Mile ENE

# GEOCHECK® - PHYSICAL SETTING SOURCE SUMMARY

## STATE OIL/GAS WELL INFORMATION

### DISTANCE FROM TP (Miles)

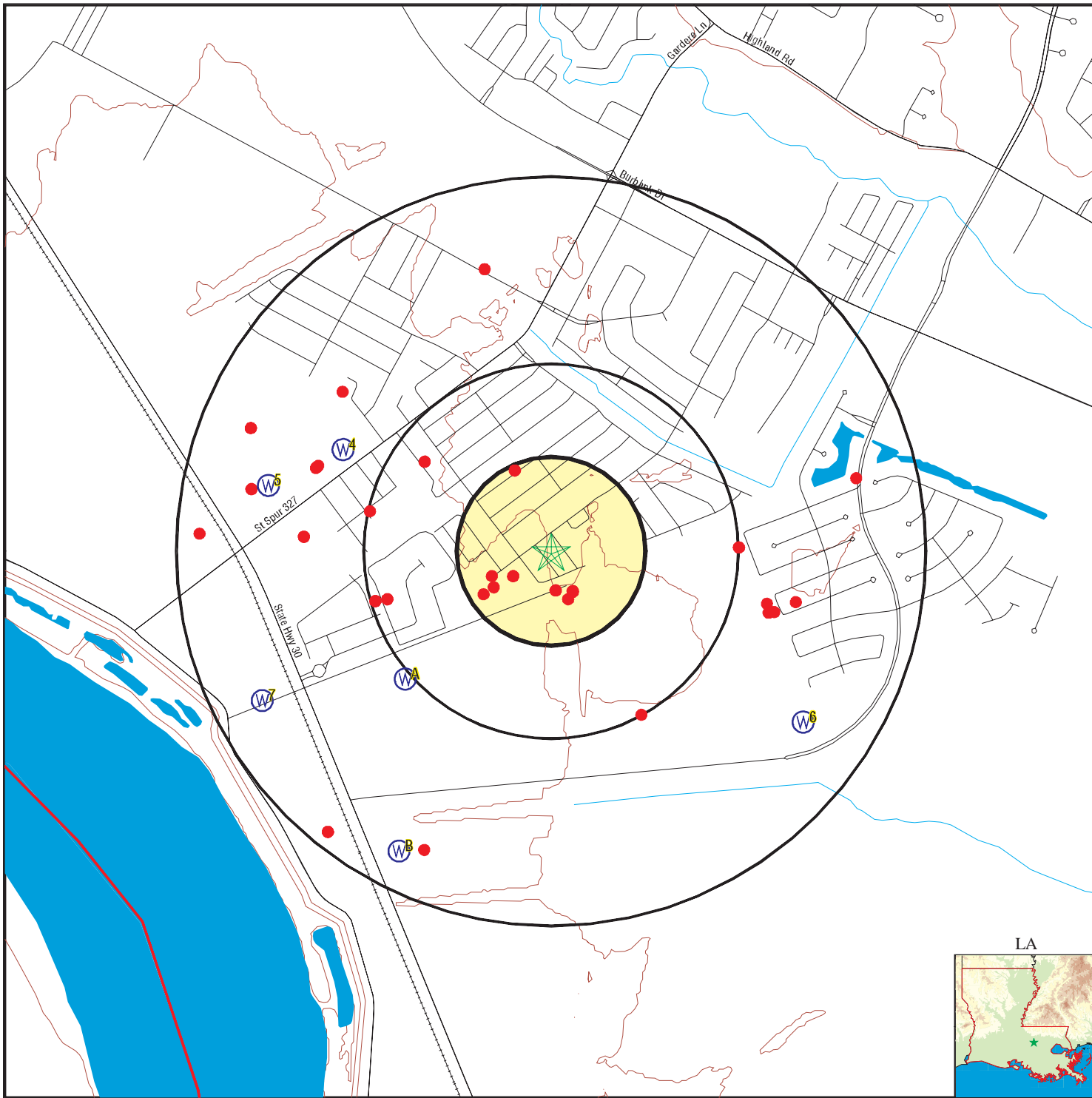
1/2 - 1 Mile WNW  
1/4 - 1/2 Mile WNW  
1/2 - 1 Mile West  
1/2 - 1 Mile East  
1/8 - 1/4 Mile WSW  
0 - 1/8 Mile WSW  
0 - 1/8 Mile South  
0 - 1/8 Mile South  
0 - 1/8 Mile SSE  
1/8 - 1/4 Mile WSW  
1/4 - 1/2 Mile WSW  
1/4 - 1/2 Mile WSW  
1/4 - 1/2 Mile WSW  
1/2 - 1 Mile ESE  
1/2 - 1 Mile ESE  
1/2 - 1 Mile SW  
1/2 - 1 Mile SSW

### DISTANCE FROM TP (Miles)

1/2 - 1 Mile WNW  
1/2 - 1 Mile West  
1/2 - 1 Mile West  
1/2 - 1 Mile East  
0 - 1/8 Mile WSW  
1/8 - 1/4 Mile WSW  
0 - 1/8 Mile South  
0 - 1/8 Mile SSE  
0 - 1/8 Mile SSE  
1/8 - 1/4 Mile SSE  
1/4 - 1/2 Mile WSW  
1/4 - 1/2 Mile WSW  
1/2 - 1 Mile ESE  
1/2 - 1 Mile ESE  
1/4 - 1/2 Mile SSE  
1/2 - 1 Mile SW



# PHYSICAL SETTING SOURCE MAP - 2383044.2s



- County Boundary
- Major Roads
- Contour Lines
- Earthquake epicenter, Richter 5 or greater
- Water Wells
- Public Water Supply Wells
- Cluster of Multiple Icons

- Groundwater Flow Direction
- Indeterminate Groundwater Flow at Location
- Groundwater Flow Varies at Location
- Closest Hydrogeological Data
- Oil, gas or related wells



SITE NAME: Hidden Cove Group Site  
 ADDRESS: Hidden Cove Group Site  
 Baton Rouge LA 70810  
 LAT/LONG: 30.3457 / 91.1266

CLIENT: Gulf South Research Corp.  
 CONTACT: Denise Ford  
 INQUIRY #: 2383044.2s  
 DATE: December 19, 2008 9:40 am

# GEOCHECK® - PHYSICAL SETTING SOURCE MAP FINDINGS

Map ID  
 Direction  
 Distance  
 Elevation

Database      EDR ID Number

**A1**  
**SW**  
**1/2 - 1 Mile**  
**Higher**

**FED USGS      USGS2494264**

Agency cd:	USGS	Site no:	302026091075902
Site name:	EB- 257		
Latitude:	302026		
Longitude:	0910759	Dec lat:	30.34074881
Dec lon:	-91.13316087	Coor meth:	M
Coor accr:	T	Latlong datum:	NAD27
Dec latlong datum:	NAD83	District:	22
State:	22	County:	033
Country:	US	Land net:	S 44T 8S R 1E
Location map:	PLAQUEMINE 163C	Map scale:	24000
Altitude:	24.00		
Altitude method:	Interpolated from topographic map		
Altitude accuracy:	5.		
Altitude datum:	National Geodetic Vertical Datum of 1929		
Hydrologic:	Amite. Louisiana, Mississippi. Area = 1890 sq.mi.		
Topographic:	Not Reported		
Site type:	Ground-water other than Spring	Date construction:	19170101
Date inventoried:	Not Reported	Mean greenwich time offset:	CST
Local standard time flag:	Y		
Type of ground water site:	Single well, other than collector or Ranney type		
Aquifer Type:	Not Reported		
Aquifer:	MISSISSIPPI RIVER ALLUVIAL AQUIFER		
Well depth:	220	Hole depth:	Not Reported
Source of depth data:	Not Reported		
Project number:	Not Reported		
Real time data flag:	0		
Daily flow data begin date:	0000-00-00	Daily flow data count:	0
Daily flow data end date:	0000-00-00	Peak flow data end date:	0000-00-00
Peak flow data begin date:	0000-00-00	Water quality data begin date:	1959-04-24
Peak flow data count:	0	Water quality data count:	1
Water quality data end date:	1959-04-24	Ground water data begin date:	1943-05-03
Ground water data begin date:	1943-05-03	Ground water data end date:	1943-05-03
Ground water data count:	1		

Ground-water levels, Number of Measurements: 1

	Feet below	Feet to
Date	Surface	Sealevel

-----  
 1943-05-03    2.95

**A2**  
**SW**  
**1/2 - 1 Mile**  
**Higher**

**FED USGS      USGS2494265**

# GEOCHECK® - PHYSICAL SETTING SOURCE MAP FINDINGS

Agency cd:	USGS	Site no:	302026091075903
Site name:	EB- 258		
Latitude:	302026		
Longitude:	0910759	Dec lat:	30.34074881
Dec lon:	-91.13316087	Coor meth:	M
Coor accr:	T	Latlong datum:	NAD27
Dec latlong datum:	NAD83	District:	22
State:	22	County:	033
Country:	US	Land net:	S 44T 8S R 1E
Location map:	PLAQUEMINE 163C	Map scale:	24000
Altitude:	24.00		
Altitude method:	Interpolated from topographic map		
Altitude accuracy:	5.		
Altitude datum:	National Geodetic Vertical Datum of 1929		
Hydrologic:	Amite. Louisiana, Mississippi. Area = 1890 sq.mi.		
Topographic:	Not Reported		
Site type:	Ground-water other than Spring	Date construction:	19220101
Date inventoried:	Not Reported	Mean greenwich time offset:	CST
Local standard time flag:	Y		
Type of ground water site:	Single well, other than collector or Ranney type		
Aquifer Type:	Not Reported		
Aquifer:	MISSISSIPPI RIVER ALLUVIAL AQUIFER		
Well depth:	220	Hole depth:	Not Reported
Source of depth data:	Not Reported		
Project number:	Not Reported		
Real time data flag:	0	Daily flow data begin date:	0000-00-00
Daily flow data end date:	0000-00-00	Daily flow data count:	0
Peak flow data begin date:	0000-00-00	Peak flow data end date:	0000-00-00
Peak flow data count:	0	Water quality data begin date:	1959-04-24
Water quality data end date:	1959-04-24	Water quality data count:	1
Ground water data begin date:	1945-05-05	Ground water data end date:	1945-05-05
Ground water data count:	1		

Ground-water levels, Number of Measurements: 1

Date	Feet below Surface	Feet to Sealevel
------	-----------------------	---------------------

-----  
1945-05-05

Note: The site was flowing, but the head could not be measured without additional equipment.

**A3  
SW  
1/2 - 1 Mile  
Higher**

**FED USGS      USGS2494263**

Agency cd:	USGS	Site no:	302026091075901
Site name:	EB- 256		
Latitude:	302026		
Longitude:	0910759	Dec lat:	30.34074881
Dec lon:	-91.13316087	Coor meth:	M
Coor accr:	T	Latlong datum:	NAD27
Dec latlong datum:	NAD83	District:	22
State:	22	County:	033
Country:	US	Land net:	S 44T 8S R 1E
Location map:	PLAQUEMINE 163C	Map scale:	24000

## GEOCHECK® - PHYSICAL SETTING SOURCE MAP FINDINGS

Altitude:	24.00		
Altitude method:	Interpolated from topographic map		
Altitude accuracy:	5.		
Altitude datum:	National Geodetic Vertical Datum of 1929		
Hydrologic:	Amite. Louisiana, Mississippi. Area = 1890 sq.mi.		
Topographic:	Not Reported		
Site type:	Ground-water other than Spring	Date construction:	Not Reported
Date inventoried:	Not Reported	Mean greenwich time offset:	CST
Local standard time flag:	Y		
Type of ground water site:	Single well, other than collector or Ranney type		
Aquifer Type:	Not Reported		
Aquifer:	MISSISSIPPI RIVER ALLUVIAL AQUIFER		
Well depth:	220	Hole depth:	Not Reported
Source of depth data:	Not Reported		
Project number:	Not Reported		
Real time data flag:	0	Daily flow data begin date:	0000-00-00
Daily flow data end date:	0000-00-00	Daily flow data count:	0
Peak flow data begin date:	0000-00-00	Peak flow data end date:	0000-00-00
Peak flow data count:	0	Water quality data begin date:	1945-05-05
Water quality data end date:	1945-05-05	Water quality data count:	1
Ground water data begin date:	0000-00-00	Ground water data end date:	0000-00-00
Ground water data count:	0		

Ground-water levels, Number of Measurements: 0

**4  
WNW  
1/2 - 1 Mile  
Higher**

**FED USGS      USGS2494138**

Agency cd:	USGS	Site no:	302058091080901
Site name:	EB- 736		
Latitude:	302058		
Longitude:	0910809	Dec lat:	30.34963749
Dec lon:	-91.13593877	Coor meth:	M
Coor accr:	S	Latlong datum:	NAD27
Dec latlong datum:	NAD83	District:	22
State:	22	County:	033
Country:	US	Land net:	S 41T 8S R 1E
Location map:	PLAQUEMINE 163C	Map scale:	Not Reported
Altitude:	23.00		
Altitude method:	Interpolated from topographic map		
Altitude accuracy:	5		
Altitude datum:	National Geodetic Vertical Datum of 1929		
Hydrologic:	Amite. Louisiana, Mississippi. Area = 1890 sq.mi.		
Topographic:	Flat surface		
Site type:	Ground-water other than Spring	Date construction:	19611201
Date inventoried:	Not Reported	Mean greenwich time offset:	CST
Local standard time flag:	Y		
Type of ground water site:	Single well, other than collector or Ranney type		
Aquifer Type:	Not Reported		
Aquifer:	MISSISSIPPI RIVER ALLUVIAL AQUIFER		
Well depth:	211	Hole depth:	252
Source of depth data:	Not Reported		
Project number:	Not Reported		
Real time data flag:	Not Reported	Daily flow data begin date:	Not Reported
Daily flow data end date:	Not Reported	Daily flow data count:	Not Reported
Peak flow data begin date:	Not Reported	Peak flow data end date:	Not Reported

## GEOCHECK® - PHYSICAL SETTING SOURCE MAP FINDINGS

Peak flow data count: Not Reported  
 Water quality data end date: Not Reported  
 Ground water data begin date: Not Reported  
 Ground water data count: Not Reported

Water quality data begin date: Not Reported  
 Water quality data count: Not Reported  
 Ground water data end date: Not Reported

Ground-water levels, Number of Measurements: 0

**5**  
**WNW**  
**1/2 - 1 Mile**  
**Higher**

**FED USGS      USGS2494300**

Agency cd:	USGS	Site no:	302053091082101
Site name:	EB- 217		
Latitude:	302053		
Longitude:	0910821	Dec lat:	30.34824863
Dec lon:	-91.13927219	Coor meth:	M
Coor accr:	F	Latlong datum:	NAD27
Dec latlong datum:	NAD83	District:	22
State:	22	County:	033
Country:	US	Land net:	S 41T 8S R 1E
Location map:	PLAQUEMINE 163C	Map scale:	24000
Altitude:	22.00		
Altitude method:	Interpolated from topographic map		
Altitude accuracy:	5.		
Altitude datum:	National Geodetic Vertical Datum of 1929		
Hydrologic:	Amite. Louisiana, Mississippi. Area = 1890 sq.mi.		
Topographic:	Flat surface		
Site type:	Ground-water other than Spring	Date construction:	Not Reported
Date inventoried:	Not Reported	Mean greenwich time offset:	CST
Local standard time flag:	Y		
Type of ground water site:	Single well, other than collector or Ranney type		
Aquifer Type:	Not Reported		
Aquifer:	MISSISSIPPI RIVER ALLUVIAL AQUIFER		
Well depth:	125	Hole depth:	Not Reported
Source of depth data:	Not Reported		
Project number:	Not Reported		
Real time data flag:	Not Reported		
Daily flow data end date:	Not Reported	Daily flow data begin date:	Not Reported
Daily flow data count:	Not Reported	Daily flow data count:	Not Reported
Peak flow data begin date:	Not Reported	Peak flow data end date:	Not Reported
Peak flow data count:	Not Reported	Water quality data begin date:	Not Reported
Water quality data end date:	Not Reported	Water quality data count:	Not Reported
Ground water data begin date:	Not Reported	Ground water data end date:	Not Reported
Ground water data count:	Not Reported		

Ground-water levels, Number of Measurements: 0

**6**  
**SE**  
**1/2 - 1 Mile**  
**Lower**

**FED USGS      USGS2494250**

## GEOCHECK® - PHYSICAL SETTING SOURCE MAP FINDINGS

Agency cd:	USGS	Site no:	302020091065501
Site name:	EB- 261		
Latitude:	302020		
Longitude:	0910655	Dec lat:	30.33908218
Dec lon:	-91.1153826	Coor meth:	M
Coor accr:	S	Latlong datum:	NAD27
Dec latlong datum:	NAD83	District:	22
State:	22	County:	033
Country:	US	Land net:	S 51T 8S R 1E
Location map:	ST. GABRIEL 163D	Map scale:	24000
Altitude:	15.00		
Altitude method:	Interpolated from topographic map		
Altitude accuracy:	5.		
Altitude datum:	National Geodetic Vertical Datum of 1929		
Hydrologic:	Amite. Louisiana, Mississippi. Area = 1890 sq.mi.		
Topographic:	Flat surface		
Site type:	Ground-water other than Spring	Date construction:	19250101
Date inventoried:	Not Reported	Mean greenwich time offset:	CST
Local standard time flag:	Y		
Type of ground water site:	Single well, other than collector or Ranney type		
Aquifer Type:	Not Reported		
Aquifer:	MISSISSIPPI RIVER ALLUVIAL AQUIFER		
Well depth:	160	Hole depth:	Not Reported
Source of depth data:	Not Reported		
Project number:	Not Reported		
Real time data flag:	Not Reported	Daily flow data begin date:	Not Reported
Daily flow data end date:	Not Reported	Daily flow data count:	Not Reported
Peak flow data begin date:	Not Reported	Peak flow data end date:	Not Reported
Peak flow data count:	Not Reported	Water quality data begin date:	Not Reported
Water quality data end date:	Not Reported	Water quality data count:	Not Reported
Ground water data begin date:	Not Reported	Ground water data end date:	Not Reported
Ground water data count:	Not Reported		

Ground-water levels, Number of Measurements: 0

**7**  
**WSW**  
**1/2 - 1 Mile**  
**Higher**

**FED USGS      USGS2494252**

Agency cd:	USGS	Site no:	302023091082201
Site name:	EB- 259		
Latitude:	302023		
Longitude:	0910822	Dec lat:	30.3399155
Dec lon:	-91.13954992	Coor meth:	M
Coor accr:	S	Latlong datum:	NAD27
Dec latlong datum:	NAD83	District:	22
State:	22	County:	033
Country:	US	Land net:	S 44T 8S R 1E
Location map:	PLAQUEMINE 163C	Map scale:	24000
Altitude:	26.00		
Altitude method:	Interpolated from topographic map		
Altitude accuracy:	5.		
Altitude datum:	National Geodetic Vertical Datum of 1929		
Hydrologic:	Amite. Louisiana, Mississippi. Area = 1890 sq.mi.		
Topographic:	Flat surface		
Site type:	Ground-water other than Spring	Date construction:	18980101
Date inventoried:	Not Reported	Mean greenwich time offset:	CST

## GEOCHECK® - PHYSICAL SETTING SOURCE MAP FINDINGS

Local standard time flag:	Y		
Type of ground water site:	Single well, other than collector or Ranney type		
Aquifer Type:	Not Reported		
Aquifer:	MISSISSIPPI RIVER ALLUVIAL AQUIFER		
Well depth:	200	Hole depth:	Not Reported
Source of depth data:	Not Reported		
Project number:	Not Reported		
Real time data flag:	Not Reported	Daily flow data begin date:	Not Reported
Daily flow data end date:	Not Reported	Daily flow data count:	Not Reported
Peak flow data begin date:	Not Reported	Peak flow data end date:	Not Reported
Peak flow data count:	Not Reported	Water quality data begin date:	Not Reported
Water quality data end date:	Not Reported	Water quality data count:	Not Reported
Ground water data begin date:	Not Reported	Ground water data end date:	Not Reported
Ground water data count:	Not Reported		

Ground-water levels, Number of Measurements: 0

**B8**  
**SSW**  
**1/2 - 1 Mile**  
**Higher**

**FED USGS      USGS2494225**

Agency cd:	USGS	Site no:	302002091080002
Site name:	EB- 438		
Latitude:	302002		
Longitude:	0910800	Dec lat:	30.3340823
Dec lon:	-91.13343861	Coor meth:	M
Coor accr:	S	Latlong datum:	NAD27
Dec latlong datum:	NAD83	District:	22
State:	22	County:	033
Country:	US	Land net:	S 45T 8S R 1E
Location map:	PLAQUEMINE 163C	Map scale:	24000
Altitude:	24.00		
Altitude method:	Interpolated from topographic map		
Altitude accuracy:	5.		
Altitude datum:	National Geodetic Vertical Datum of 1929		
Hydrologic:	Amite, Louisiana, Mississippi. Area = 1890 sq.mi.		
Topographic:	Flat surface		
Site type:	Ground-water other than Spring	Date construction:	Not Reported
Date inventoried:	Not Reported	Mean greenwich time offset:	CST
Local standard time flag:	Y		
Type of ground water site:	Single well, other than collector or Ranney type		
Aquifer Type:	Not Reported		
Aquifer:	MISSISSIPPI RIVER ALLUVIAL AQUIFER		
Well depth:	182	Hole depth:	182
Source of depth data:	Not Reported		
Project number:	Not Reported		
Real time data flag:	0	Daily flow data begin date:	0000-00-00
Daily flow data end date:	0000-00-00	Daily flow data count:	0
Peak flow data begin date:	0000-00-00	Peak flow data end date:	0000-00-00
Peak flow data count:	0	Water quality data begin date:	0000-00-00
Water quality data end date:	0000-00-00	Water quality data count:	0
Ground water data begin date:	1946-00-00	Ground water data end date:	1946-01-01
Ground water data count:	2		

# GEOCHECK® - PHYSICAL SETTING SOURCE MAP FINDINGS

Ground-water levels, Number of Measurements: 2

Date	Feet below Surface	Feet to Sealevel	Date	Feet below Surface	Feet to Sealevel
1946-01-01	10.00		1946	10.00	

**B9  
SSW  
1/2 - 1 Mile  
Higher**

**FED USGS      USGS2494224**

Agency cd:	USGS	Site no:	302002091080001
Site name:	EB- 262		
Latitude:	302002		
Longitude:	0910800	Dec lat:	30.3340823
Dec lon:	-91.13343861	Coor meth:	M
Coor accr:	S	Latlong datum:	NAD27
Dec latlong datum:	NAD83	District:	22
State:	22	County:	033
Country:	US	Land net:	S 45T 8S R 1E
Location map:	PLAQUEMINE 163C	Map scale:	24000
Altitude:	24.00		
Altitude method:	Interpolated from topographic map		
Altitude accuracy:	5.		
Altitude datum:	National Geodetic Vertical Datum of 1929		
Hydrologic:	Amite. Louisiana, Mississippi. Area = 1890 sq.mi.		
Topographic:	Flat surface		
Site type:	Ground-water other than Spring	Date construction:	Not Reported
Date inventoried:	Not Reported	Mean greenwich time offset:	CST
Local standard time flag:	Y		
Type of ground water site:	Single well, other than collector or Ranney type		
Aquifer Type:	Not Reported		
Aquifer:	MISSISSIPPI RIVER ALLUVIAL AQUIFER		
Well depth:	170	Hole depth:	Not Reported
Source of depth data:	Not Reported		
Project number:	Not Reported		
Real time data flag:	Not Reported		
Daily flow data end date:	Not Reported	Daily flow data begin date:	Not Reported
Peak flow data begin date:	Not Reported	Daily flow data count:	Not Reported
Peak flow data count:	Not Reported	Peak flow data end date:	Not Reported
Water quality data end date:	Not Reported	Water quality data begin date:	Not Reported
Ground water data begin date:	Not Reported	Water quality data count:	Not Reported
Ground water data count:	Not Reported	Ground water data end date:	Not Reported

Ground-water levels, Number of Measurements: 0



## GEOCHECK® - PHYSICAL SETTING SOURCE MAP FINDINGS

Direction \_\_\_\_\_ Database \_\_\_\_\_ EDR ID Number \_\_\_\_\_  
 Distance \_\_\_\_\_

**NNW**

1/2 - 1 Mile

OIL\_GAS

LAOG30000091998

Well seria:	26726	Wlc line i:	1
Coordinate:	01	Received d:	01-DEC-1976
Lambert x:	2064290	Lambert y:	614524
Zone:	S	Create dat:	02-MAY-1999
Create use:	CONVALL	Update dat:	19-SEP-2008
Update use:	OPS\$OOC	Coordinat1:	03
Coordinat2:	1	Ground ele:	Not Reported
Longitude :	46.199	Longitude1:	7
Longitude2:	91	Latitude s:	23.04
Latitude m:	21	Latitude d:	30
Surface la:	Not Reported	Surface lo:	Not Reported
Coordinat3:	17	G utmx:	679761.2402882
G utmy:	3359786.78912889	G laty:	30.3566273356031
G longx:	-91.1296181420791	Site id:	LAOG30000091998

**NW**

1/2 - 1 Mile

OIL\_GAS

LAOG30000091777

Well seria:	200837	Wlc line i:	1
Coordinate:	01	Received d:	01-SEP-1985
Lambert x:	2062292	Lambert y:	612793
Zone:	S	Create dat:	02-MAY-1999
Create use:	CONVALL	Update dat:	19-SEP-2008
Update use:	OPS\$OOC	Coordinat1:	03
Coordinat2:	1	Ground ele:	Not Reported
Longitude :	9.044	Longitude1:	8
Longitude2:	91	Latitude s:	5.935
Latitude m:	21	Latitude d:	30
Surface la:	Not Reported	Surface lo:	Not Reported
Coordinat3:	17	G utmx:	679160.050247846
G utmy:	3359250.24105983	G laty:	30.3518773706568
G longx:	-91.1359624027847	Site id:	LAOG30000091777

**WNW**

1/2 - 1 Mile

OIL\_GAS

LAOG30000091708

Well seria:	188976	Wlc line i:	1
Coordinate:	01	Received d:	01-NOV-1983
Lambert x:	2061000	Lambert y:	612280
Zone:	S	Create dat:	02-MAY-1999
Create use:	CONVALL	Update dat:	19-SEP-2008
Update use:	OPS\$OOC	Coordinat1:	03
Coordinat2:	1	Ground ele:	Not Reported
Longitude :	23.799	Longitude1:	8
Longitude2:	91	Latitude s:	.878
Latitude m:	21	Latitude d:	30

## GEOCHECK® - PHYSICAL SETTING SOURCE MAP FINDINGS

Surface la:	Not Reported	Surface lo:	Not Reported
Coordinat3:	17	G utmx:	678768.571902404
G utmy:	3359088.08956578	G laty:	30.350472871997
G longx:	-91.1400613341728	Site id:	LAOG30000091708

**WNW**  
1/2 - 1 Mile

**OIL\_GAS      LAOG30000091709**

Well seria:	189986	Wlc line i:	1
Coordinate:	01	Received d:	01-DEC-1983
Lambert x:	2061000	Lambert y:	612280
Zone:	S	Create dat:	02-MAY-1999
Create use:	CONVALL	Update dat:	19-SEP-2008
Update use:	OPS\$OOC	Coordinat1:	03
Coordinat2:	1	Ground ele:	Not Reported
Longitude :	23.799	Longitude1:	8
Longitude2:	91	Latitude s:	.878
Latitude m:	21	Latitude d:	30
Surface la:	Not Reported	Surface lo:	Not Reported
Coordinat3:	17	G utmx:	678768.571902404
G utmy:	3359088.08956578	G laty:	30.350472871997
G longx:	-91.1400613341728	Site id:	LAOG30000091709

**NW**  
1/4 - 1/2 Mile

**OIL\_GAS      LAOG30000091623**

Well seria:	187111	Wlc line i:	1
Coordinate:	01	Received d:	01-AUG-1983
Lambert x:	2063450	Lambert y:	611810
Zone:	S	Create dat:	02-MAY-1999
Create use:	CONVALL	Update dat:	19-SEP-2008
Update use:	OPS\$OOC	Coordinat1:	03
Coordinat2:	1	Ground ele:	Not Reported
Longitude :	55.847	Longitude1:	7
Longitude2:	91	Latitude s:	56.184
Latitude m:	20	Latitude d:	30
Surface la:	Not Reported	Surface lo:	Not Reported
Coordinat3:	17	G utmx:	679517.401186255
G utmy:	3358955.83461734	G laty:	30.3491689684941
G longx:	-91.1322965159508	Site id:	LAOG30000091623

**NW**  
1/4 - 1/2 Mile

**OIL\_GAS      LAOG30000091624**

Well seria:	189984	Wlc line i:	1
Coordinate:	01	Received d:	01-JAN-1984
Lambert x:	2063450	Lambert y:	611810
Zone:	S	Create dat:	02-MAY-1999
Create use:	CONVALL	Update dat:	19-SEP-2008
Update use:	OPS\$OOC	Coordinat1:	03
Coordinat2:	1	Ground ele:	Not Reported
Longitude :	55.847	Longitude1:	7
Longitude2:	91	Latitude s:	56.184
Latitude m:	20	Latitude d:	30

# GEOCHECK® - PHYSICAL SETTING SOURCE MAP FINDINGS

Surface la:	Not Reported	Surface lo:	Not Reported
Coordinat3:	17	G utmx:	679517.401186255
G utmy:	3358955.83461734	G laty:	30.3491689684941
G longx:	-91.1322965159508	Site id:	LAOG30000091624

**WNW**  
**1/2 - 1 Mile**

**OIL\_GAS      LAOG30000091614**

Well seria:	186281	Wlc line i:	1
Coordinate:	01	Received d:	01-JUN-1983
Lambert x:	2061950	Lambert y:	611750
Zone:	S	Create dat:	02-MAY-1999
Create use:	CONVALL	Update dat:	19-SEP-2008
Update use:	OPS\$OOC	Coordinat1:	01
Coordinat2:	1	Ground ele:	Not Reported
Longitude :	12.967	Longitude1:	8
Longitude2:	91	Latitude s:	55.616
Latitude m:	20	Latitude d:	30
Surface la:	Not Reported	Surface lo:	Not Reported
Coordinat3:	5	G utmx:	679060.494360385
G utmy:	3358930.81698089	G laty:	30.3490111387401
G longx:	-91.1370523497547	Site id:	LAOG30000091614

**WNW**  
**1/2 - 1 Mile**

**OIL\_GAS      LAOG30000091608**

Well seria:	186281	Wlc line i:	2
Coordinate:	01	Received d:	01-JAN-1984
Lambert x:	2061920	Lambert y:	611720
Zone:	S	Create dat:	02-MAY-1999
Create use:	CONVALL	Update dat:	19-SEP-2008
Update use:	OPS\$OOC	Coordinat1:	03
Coordinat2:	Not Reported	Ground ele:	Not Reported
Longitude :	13.31	Longitude1:	8
Longitude2:	91	Latitude s:	55.319
Latitude m:	20	Latitude d:	30
Surface la:	Not Reported	Surface lo:	Not Reported
Coordinat3:	17	G utmx:	679051.485457578
G utmy:	3358921.53885994	G laty:	30.3489287915121
G longx:	-91.1371476225277	Site id:	LAOG30000091608

**WNW**  
**1/2 - 1 Mile**

**OIL\_GAS      LAOG30000091609**

Well seria:	190425	Wlc line i:	1
Coordinate:	01	Received d:	01-JAN-1984
Lambert x:	2061920	Lambert y:	611720
Zone:	S	Create dat:	02-MAY-1999
Create use:	CONVALL	Update dat:	19-SEP-2008
Update use:	OPS\$OOC	Coordinat1:	03
Coordinat2:	1	Ground ele:	Not Reported
Longitude :	13.31	Longitude1:	8
Longitude2:	91	Latitude s:	55.319
Latitude m:	20	Latitude d:	30

## GEOCHECK® - PHYSICAL SETTING SOURCE MAP FINDINGS

Surface la:	Not Reported	Surface lo:	Not Reported
Coordinat3:	17	G utmx:	679051.485457578
G utmy:	3358921.53885994	G laty:	30.3489287915121
G longx:	-91.1371476225277	Site id:	LAOG30000091609

### NNW

1/8 - 1/4 Mile

OIL\_GAS

LAOG30000091602

Well seria:	188587	Wlc line i:	1
Coordinate:	01	Received d:	01-OCT-1983
Lambert x:	2064720	Lambert y:	611690
Zone:	S	Create dat:	02-MAY-1999
Create use:	CONVALL	Update dat:	19-SEP-2008
Update use:	OPS\$OOC	Coordinat1:	03
Coordinat2:	1	Ground ele:	Not Reported
Longitude :	41.355	Longitude1:	7
Longitude2:	91	Latitude s:	54.974
Latitude m:	20	Latitude d:	30
Surface la:	Not Reported	Surface lo:	Not Reported
Coordinat3:	17	G utmx:	679905.016097195
G utmy:	3358924.95920153	G laty:	30.3488328298914
G longx:	-91.1282708667848	Site id:	LAOG30000091602

### NNW

1/8 - 1/4 Mile

OIL\_GAS

LAOG30000091603

Well seria:	191248	Wlc line i:	1
Coordinate:	01	Received d:	01-MAR-1984
Lambert x:	2064720	Lambert y:	611690
Zone:	S	Create dat:	02-MAY-1999
Create use:	CONVALL	Update dat:	19-SEP-2008
Update use:	OPS\$OOC	Coordinat1:	03
Coordinat2:	1	Ground ele:	Not Reported
Longitude :	41.355	Longitude1:	7
Longitude2:	91	Latitude s:	54.974
Latitude m:	20	Latitude d:	30
Surface la:	Not Reported	Surface lo:	Not Reported
Coordinat3:	17	G utmx:	679905.016097195
G utmy:	3358924.95920153	G laty:	30.3488328298914
G longx:	-91.1282708667848	Site id:	LAOG30000091603

### ENE

1/2 - 1 Mile

OIL\_GAS

LAOG30000091584

Well seria:	115002	Wlc line i:	1
Coordinate:	01	Received d:	01-DEC-1976
Lambert x:	2069531	Lambert y:	611588
Zone:	S	Create dat:	02-MAY-1999
Create use:	CONVALL	Update dat:	19-SEP-2008
Update use:	OPS\$OOC	Coordinat1:	03
Coordinat2:	1	Ground ele:	Not Reported
Longitude :	46.439	Longitude1:	6
Longitude2:	91	Latitude s:	53.88
Latitude m:	20	Latitude d:	30

## GEOCHECK® - PHYSICAL SETTING SOURCE MAP FINDINGS

Surface la:	Not Reported	Surface lo:	Not Reported
Coordinat3:	17	G utmx:	681371.798632224
G utmy:	3358915.46024831	G laty:	30.3485278273541
G longx:	-91.1130190458435	Site id:	LAOG30000091584

**WNW**  
**1/2 - 1 Mile**

**OIL\_GAS      LAOG30000091563**

Well seria:	188247	Wlc line i:	1
Coordinate:	01	Received d:	01-OCT-1983
Lambert x:	2061010	Lambert y:	611420
Zone:	S	Create dat:	02-MAY-1999
Create use:	CONVALL	Update dat:	19-SEP-2008
Update use:	OPS\$OOC	Coordinat1:	03
Coordinat2:	1	Ground ele:	Not Reported
Longitude :	23.702	Longitude1:	8
Longitude2:	91	Latitude s:	52.365
Latitude m:	20	Latitude d:	30
Surface la:	Not Reported	Surface lo:	Not Reported
Coordinat3:	17	G utmx:	678775.478481814
G utmy:	3358826.02076092	G laty:	30.3481081575682
G longx:	-91.1400342276106	Site id:	LAOG30000091563

**WNW**  
**1/2 - 1 Mile**

**OIL\_GAS      LAOG30000091564**

Well seria:	189985	Wlc line i:	1
Coordinate:	01	Received d:	01-DEC-1983
Lambert x:	2061010	Lambert y:	611420
Zone:	S	Create dat:	02-MAY-1999
Create use:	CONVALL	Update dat:	19-SEP-2008
Update use:	OPS\$OOC	Coordinat1:	03
Coordinat2:	1	Ground ele:	Not Reported
Longitude :	23.702	Longitude1:	8
Longitude2:	91	Latitude s:	52.365
Latitude m:	20	Latitude d:	30
Surface la:	Not Reported	Surface lo:	Not Reported
Coordinat3:	17	G utmx:	678775.478481814
G utmy:	3358826.02076092	G laty:	30.3481081575682
G longx:	-91.1400342276106	Site id:	LAOG30000091564

**WNW**  
**1/4 - 1/2 Mile**

**OIL\_GAS      LAOG30000091526**

Well seria:	186563	Wlc line i:	1
Coordinate:	01	Received d:	01-JUL-1983
Lambert x:	2062680	Lambert y:	611110
Zone:	S	Create dat:	02-MAY-1999
Create use:	CONVALL	Update dat:	19-SEP-2008
Update use:	OPS\$OOC	Coordinat1:	03
Coordinat2:	1	Ground ele:	Not Reported
Longitude :	4.649	Longitude1:	8
Longitude2:	91	Latitude s:	49.268
Latitude m:	20	Latitude d:	30

# GEOCHECK® - PHYSICAL SETTING SOURCE MAP FINDINGS

Surface la:	Not Reported	Surface lo:	Not Reported
Coordinat3:	17	G utmx:	679285.858218738
G utmy:	3358739.03069276	G laty:	30.347247928484
G longx:	-91.1347415210517	Site id:	LAOG30000091526

**West  
1/2 - 1 Mile**

**OIL\_GAS      LAOG30000091492**

Well seria:	195453	Wlc line i:	1
Coordinate:	01	Received d:	01-OCT-1984
Lambert x:	2060280	Lambert y:	610790
Zone:	S	Create dat:	02-MAY-1999
Create use:	CONVALL	Update dat:	19-SEP-2008
Update use:	OPS\$OOC	Coordinat1:	03
Coordinat2:	1	Ground ele:	Not Reported
Longitude :	32.045	Longitude1:	8
Longitude2:	91	Latitude s:	46.141
Latitude m:	20	Latitude d:	30
Surface la:	Not Reported	Surface lo:	Not Reported
Coordinat3:	17	G utmx:	678555.813240353
G utmy:	3358630.73210155	G laty:	30.3463792638798
G longx:	-91.1423518776736	Site id:	LAOG30000091492

**West  
1/2 - 1 Mile**

**OIL\_GAS      LAOG30000091483**

Well seria:	187720	Wlc line i:	1
Coordinate:	01	Received d:	01-SEP-1983
Lambert x:	2061750	Lambert y:	610750
Zone:	S	Create dat:	02-MAY-1999
Create use:	CONVALL	Update dat:	19-SEP-2008
Update use:	OPS\$OOC	Coordinat1:	03
Coordinat2:	1	Ground ele:	Not Reported
Longitude :	15.27	Longitude1:	8
Longitude2:	91	Latitude s:	45.72
Latitude m:	20	Latitude d:	30
Surface la:	Not Reported	Surface lo:	Not Reported
Coordinat3:	17	G utmx:	679004.024369336
G utmy:	3358625.13587956	G laty:	30.3462624636212
G longx:	-91.137691826834	Site id:	LAOG30000091483

**West  
1/2 - 1 Mile**

**OIL\_GAS      LAOG30000091484**

Well seria:	190168	Wlc line i:	1
Coordinate:	01	Received d:	01-JAN-1984
Lambert x:	2061750	Lambert y:	610750
Zone:	S	Create dat:	02-MAY-1999
Create use:	CONVALL	Update dat:	19-SEP-2008
Update use:	OPS\$OOC	Coordinat1:	03
Coordinat2:	1	Ground ele:	Not Reported
Longitude :	15.27	Longitude1:	8
Longitude2:	91	Latitude s:	45.72
Latitude m:	20	Latitude d:	30

# GEOCHECK® - PHYSICAL SETTING SOURCE MAP FINDINGS

Surface la:	Not Reported	Surface lo:	Not Reported
Coordinat3:	17	G utmx:	679004.024369336
G utmy:	3358625.13587956	G laty:	30.3462624636212
G longx:	-91.137691826834	Site id:	LAOG30000091484

**East**  
**1/2 - 1 Mile**

**OIL\_GAS      LAOG30000091465**

Well seria:	182885	Wlc line i:	2
Coordinate:	01	Received d:	01-APR-1984
Lambert x:	2067880	Lambert y:	610610
Zone:	S	Create dat:	02-MAY-1999
Create use:	CONVALL	Update dat:	19-SEP-2008
Update use:	OPS\$OOC	Coordinat1:	03
Coordinat2:	Not Reported	Ground ele:	Not Reported
Longitude :	5.313	Longitude1:	7
Longitude2:	91	Latitude s:	44.226
Latitude m:	20	Latitude d:	30
Surface la:	Not Reported	Surface lo:	Not Reported
Coordinat3:	17	G utmx:	680872.984679541
G utmy:	3358609.97025325	G laty:	30.3458473246992
G longx:	-91.1182590566843	Site id:	LAOG30000091465

**East**  
**1/2 - 1 Mile**

**OIL\_GAS      LAOG30000091466**

Well seria:	191541	Wlc line i:	1
Coordinate:	01	Received d:	01-APR-1984
Lambert x:	2067880	Lambert y:	610610
Zone:	S	Create dat:	02-MAY-1999
Create use:	CONVALL	Update dat:	19-SEP-2008
Update use:	OPS\$OOC	Coordinat1:	03
Coordinat2:	1	Ground ele:	Not Reported
Longitude :	5.313	Longitude1:	7
Longitude2:	91	Latitude s:	44.226
Latitude m:	20	Latitude d:	30
Surface la:	Not Reported	Surface lo:	Not Reported
Coordinat3:	17	G utmx:	680872.984679541
G utmy:	3358609.97025325	G laty:	30.3458473246992
G longx:	-91.1182590566843	Site id:	LAOG30000091466

**WSW**  
**1/8 - 1/4 Mile**

**OIL\_GAS      LAOG30000091428**

Well seria:	171991	Wlc line i:	1
Coordinate:	01	Received d:	01-FEB-1982
Lambert x:	2064400	Lambert y:	610200
Zone:	S	Create dat:	02-MAY-1999
Create use:	CONVALL	Update dat:	19-SEP-2008
Update use:	OPS\$OOC	Coordinat1:	03
Coordinat2:	1	Ground ele:	Not Reported
Longitude :	45.037	Longitude1:	7
Longitude2:	91	Latitude s:	40.23
Latitude m:	20	Latitude d:	30

# GEOCHECK® - PHYSICAL SETTING SOURCE MAP FINDINGS

Surface la:	Not Reported	Surface lo:	Not Reported
Coordinat3:	17	G utmx:	679814.170436676
G utmy:	3358469.39389848	G laty:	30.3447374729108
G longx:	-91.1292937790552	Site id:	LAOG30000091428

**WSW**

**0 - 1/8 Mile**

**OIL\_GAS**

**LAOG30000091426**

Well seria:	179438	Wlc line i:	1
Coordinate:	01	Received d:	01-DEC-1981
Lambert x:	2064700	Lambert y:	610200
Zone:	S	Create dat:	02-MAY-1999
Create use:	CONVALL	Update dat:	19-SEP-2008
Update use:	OPS\$OOC	Coordinat1:	03
Coordinat2:	1	Ground ele:	Not Reported
Longitude :	41.614	Longitude1:	7
Longitude2:	91	Latitude s:	40.225
Latitude m:	20	Latitude d:	30
Surface la:	Not Reported	Surface lo:	Not Reported
Coordinat3:	17	G utmx:	679905.605923676
G utmy:	3358470.7398805	G laty:	30.3447360013548
G longx:	-91.1283427199462	Site id:	LAOG30000091426

**WSW**

**0 - 1/8 Mile**

**OIL\_GAS**

**LAOG30000091427**

Well seria:	176866	Wlc line i:	1
Coordinate:	01	Received d:	01-AUG-1981
Lambert x:	2064700	Lambert y:	610200
Zone:	S	Create dat:	02-MAY-1999
Create use:	CONVALL	Update dat:	19-SEP-2008
Update use:	OPS\$OOC	Coordinat1:	03
Coordinat2:	1	Ground ele:	Not Reported
Longitude :	41.614	Longitude1:	7
Longitude2:	91	Latitude s:	40.225
Latitude m:	20	Latitude d:	30
Surface la:	Not Reported	Surface lo:	Not Reported
Coordinat3:	17	G utmx:	679905.605923676
G utmy:	3358470.7398805	G laty:	30.3447360013548
G longx:	-91.1283427199462	Site id:	LAOG30000091427

**WSW**

**1/8 - 1/4 Mile**

**OIL\_GAS**

**LAOG30000091402**

Well seria:	170515	Wlc line i:	1
Coordinate:	01	Received d:	01-FEB-1982
Lambert x:	2064426	Lambert y:	610042
Zone:	S	Create dat:	02-MAY-1999
Create use:	CONVALL	Update dat:	19-SEP-2008
Update use:	OPS\$OOC	Coordinat1:	03
Coordinat2:	1	Ground ele:	Not Reported
Longitude :	45	Longitude1:	7
Longitude2:	91	Latitude s:	39
Latitude m:	20	Latitude d:	30



# GEOCHECK® - PHYSICAL SETTING SOURCE MAP FINDINGS

Surface la:	Not Reported	Surface lo:	Not Reported
Coordinat3:	17	G utmx:	679822.803720821
G utmy:	3358421.35453197	G laty:	30.3443029061557
G longx:	-91.129212245776	Site id:	LAOG30000091402

**South  
0 - 1/8 Mile**

**OIL\_GAS      LAOG30000091393**

Well seria:	970970	Wlc line i:	1
Coordinate:	01	Received d:	01-MAY-1982
Lambert x:	2065300	Lambert y:	610000
Zone:	S	Create dat:	02-MAY-1999
Create use:	CONVALL	Update dat:	19-SEP-2008
Update use:	OPS\$OOC	Coordinat1:	03
Coordinat2:	1	Ground ele:	Not Reported
Longitude :	34.2	Longitude1:	7
Longitude2:	91	Latitude s:	36.5
Latitude m:	20	Latitude d:	30
Surface la:	Not Reported	Surface lo:	Not Reported
Coordinat3:	17	G utmx:	680089.374337389
G utmy:	3358412.47481548	G laty:	30.3441831143214
G longx:	-91.126441746053	Site id:	LAOG30000091393

**South  
0 - 1/8 Mile**

**OIL\_GAS      LAOG30000091392**

Well seria:	165504	Wlc line i:	1
Coordinate:	01	Received d:	01-OCT-1979
Lambert x:	2065300	Lambert y:	609999
Zone:	S	Create dat:	02-MAY-1999
Create use:	CONVALL	Update dat:	19-SEP-2008
Update use:	OPS\$OOC	Coordinat1:	03
Coordinat2:	1	Ground ele:	Not Reported
Longitude :	34.77	Longitude1:	7
Longitude2:	91	Latitude s:	38.234
Latitude m:	20	Latitude d:	30
Surface la:	Not Reported	Surface lo:	Not Reported
Coordinat3:	17	G utmx:	680089.378823991
G utmy:	3358412.17003019	G laty:	30.3441803647042
G longx:	-91.1264417517742	Site id:	LAOG30000091392

**South  
0 - 1/8 Mile**

**OIL\_GAS      LAOG30000091391**

Well seria:	164163	Wlc line i:	1
Coordinate:	01	Received d:	01-JUL-1979
Lambert x:	2065300	Lambert y:	609999
Zone:	S	Create dat:	02-MAY-1999
Create use:	CONVALL	Update dat:	19-SEP-2008
Update use:	OPS\$OOC	Coordinat1:	03
Coordinat2:	1	Ground ele:	Not Reported
Longitude :	34.77	Longitude1:	7
Longitude2:	91	Latitude s:	38.234
Latitude m:	20	Latitude d:	30

# GEOCHECK® - PHYSICAL SETTING SOURCE MAP FINDINGS

Surface la:	Not Reported	Surface lo:	Not Reported
Coordinat3:	17	G utmx:	680089.378823991
G utmy:	3358412.17003019	G laty:	30.3441803647042
G longx:	-91.1264417517742	Site id:	LAOG30000091391

**SSE**

**0 - 1/8 Mile**

**OIL\_GAS**

**LAOG30000091388**

Well seria:	176205	Wlc line i:	2
Coordinate:	01	Received d:	09-MAR-2004
Lambert x:	2065539	Lambert y:	609992
Zone:	S	Create dat:	09-MAR-2004
Create use:	DANIELA	Update dat:	19-SEP-2008
Update use:	OPS\$OOC	Coordinat1:	05
Coordinat2:	1	Ground ele:	Not Reported
Longitude :	32.046	Longitude1:	7
Longitude2:	91	Latitude s:	38.151
Latitude m:	20	Latitude d:	30
Surface la:	Not Reported	Surface lo:	Not Reported
Coordinat3:	9	G utmx:	680162.253925463
G utmy:	3358411.10883318	G laty:	30.34415992925
G longx:	-91.1256841191556	Site id:	LAOG30000091388

**SSE**

**0 - 1/8 Mile**

**OIL\_GAS**

**LAOG30000091389**

Well seria:	174333	Wlc line i:	2
Coordinate:	01	Received d:	09-MAR-2004
Lambert x:	2065539	Lambert y:	609992
Zone:	S	Create dat:	09-MAR-2004
Create use:	DANIELA	Update dat:	19-SEP-2008
Update use:	OPS\$OOC	Coordinat1:	05
Coordinat2:	1	Ground ele:	Not Reported
Longitude :	32.046	Longitude1:	7
Longitude2:	91	Latitude s:	38.151
Latitude m:	20	Latitude d:	30
Surface la:	Not Reported	Surface lo:	Not Reported
Coordinat3:	9	G utmx:	680162.253925463
G utmy:	3358411.10883318	G laty:	30.34415992925
G longx:	-91.1256841191556	Site id:	LAOG30000091389

**SSE**

**0 - 1/8 Mile**

**OIL\_GAS**

**LAOG30000091382**

Well seria:	174333	Wlc line i:	3
Coordinate:	02	Received d:	09-MAR-2004
Lambert x:	3346337	Lambert y:	670700
Zone:	S	Create dat:	09-MAR-2004
Create use:	DANIELA	Update dat:	19-SEP-2008
Update use:	OPS\$OOC	Coordinat1:	05
Coordinat2:	Not Reported	Ground ele:	Not Reported
Longitude :	32.424	Longitude1:	7
Longitude2:	91	Latitude s:	38.847
Latitude m:	20	Latitude d:	30

## GEOCHECK® - PHYSICAL SETTING SOURCE MAP FINDINGS

Surface la:	Not Reported	Surface lo:	Not Reported
Coordinat3:	10	G utmx:	680163.233638049
G utmy:	3358407.02658877	G laty:	30.3441229642149
G longx:	-91.1256746331137	Site id:	LAOG30000091382

### WSW

1/8 - 1/4 Mile

OIL\_GAS

LAOG30000091380

Well seria:	203992	Wlc line i:	1
Coordinate:	01	Received d:	01-JUN-1986
Lambert x:	2064283	Lambert y:	609944
Zone:	S	Create dat:	02-MAY-1999
Create use:	CONVALL	Update dat:	19-SEP-2008
Update use:	OPS\$OOC	Coordinat1:	01
Coordinat2:	1	Ground ele:	Not Reported
Longitude :	46.378	Longitude1:	7
Longitude2:	91	Latitude s:	37.698
Latitude m:	20	Latitude d:	30
Surface la:	Not Reported	Surface lo:	Not Reported
Coordinat3:	5	G utmx:	679779.659157603
G utmy:	3358390.84404134	G laty:	30.3440341429729
G longx:	-91.1296661339163	Site id:	LAOG30000091380

### SSE

1/8 - 1/4 Mile

OIL\_GAS

LAOG30000091373

Well seria:	971932	Wlc line i:	1
Coordinate:	01	Received d:	07-OCT-2003
Lambert x:	2065475	Lambert y:	609876
Zone:	S	Create dat:	08-OCT-2003
Create use:	SONRIS_DBA	Update dat:	19-SEP-2008
Update use:	OPS\$OOC	Coordinat1:	02
Coordinat2:	1	Ground ele:	Not Reported
Longitude :	Not Reported	Longitude1:	Not Reported
Longitude2:	Not Reported	Latitude s:	Not Reported
Latitude m:	Not Reported	Latitude d:	Not Reported
Surface la:	30.343611	Surface lo:	91.125771
Coordinat3:	13	G utmx:	680143.268106474
G utmy:	3358375.46658607	G laty:	30.3438412922347
G longx:	-91.1258876760119	Site id:	LAOG30000091373

### WSW

1/4 - 1/2 Mile

OIL\_GAS

LAOG30000091370

Well seria:	972245	Wlc line i:	1
Coordinate:	01	Received d:	01-DEC-1990
Lambert x:	2062928	Lambert y:	609871
Zone:	S	Create dat:	02-MAY-1999
Create use:	CONVALL	Update dat:	19-SEP-2008
Update use:	OPS\$OOC	Coordinat1:	03
Coordinat2:	1	Ground ele:	Not Reported
Longitude :	1.843	Longitude1:	8
Longitude2:	91	Latitude s:	36.999
Latitude m:	20	Latitude d:	30

## GEOCHECK® - PHYSICAL SETTING SOURCE MAP FINDINGS

Surface la:	Not Reported	Surface lo:	Not Reported
Coordinat3:	17	G utmx:	679367.003532287
G utmy:	3358362.51570792	G laty:	30.3438399700568
G longx:	-91.1339621233424	Site id:	LAOG30000091370

**WSW**

1/4 - 1/2 Mile

**OIL\_GAS**

**LAOG30000091371**

Well seria:	972445	Wlc line i:	2
Coordinate:	01	Received d:	01-JUL-1997
Lambert x:	2062928	Lambert y:	609871
Zone:	S	Create dat:	02-MAY-1999
Create use:	CONVALL	Update dat:	19-SEP-2008
Update use:	OPS\$OOC	Coordinat1:	03
Coordinat2:	Not Reported	Ground ele:	Not Reported
Longitude :	24.023	Longitude1:	34
Longitude2:	92	Latitude s:	15.65
Latitude m:	15	Latitude d:	30
Surface la:	Not Reported	Surface lo:	Not Reported
Coordinat3:	17	G utmx:	679367.003532287
G utmy:	3358362.51570792	G laty:	30.3438399700568
G longx:	-91.1339621233424	Site id:	LAOG30000091371

**WSW**

1/4 - 1/2 Mile

**OIL\_GAS**

**LAOG30000091363**

Well seria:	204816	Wlc line i:	1
Coordinate:	01	Received d:	01-NOV-1986
Lambert x:	2062759	Lambert y:	609845
Zone:	S	Create dat:	02-MAY-1999
Create use:	CONVALL	Update dat:	19-SEP-2008
Update use:	OPS\$OOC	Coordinat1:	03
Coordinat2:	1	Ground ele:	Not Reported
Longitude :	3.772	Longitude1:	8
Longitude2:	91	Latitude s:	36.745
Latitude m:	20	Latitude d:	30
Surface la:	Not Reported	Surface lo:	Not Reported
Coordinat3:	17	G utmx:	679315.611630548
G utmy:	3358353.83313309	G laty:	30.3437692870355
G longx:	-91.1344980248127	Site id:	LAOG30000091363

**WSW**

1/4 - 1/2 Mile

**OIL\_GAS**

**LAOG30000091364**

Well seria:	203992	Wlc line i:	2
Coordinate:	01	Received d:	01-NOV-1986
Lambert x:	2062759	Lambert y:	609845
Zone:	S	Create dat:	02-MAY-1999
Create use:	CONVALL	Update dat:	19-SEP-2008
Update use:	OPS\$OOC	Coordinat1:	03
Coordinat2:	Not Reported	Ground ele:	Not Reported
Longitude :	3.772	Longitude1:	8
Longitude2:	91	Latitude s:	36.745
Latitude m:	20	Latitude d:	30

## GEOCHECK® - PHYSICAL SETTING SOURCE MAP FINDINGS

Surface la:	Not Reported	Surface lo:	Not Reported
Coordinat3:	17	G utmx:	679315.611630548
G utmy:	3358353.83313309	G laty:	30.3437692870355
G longx:	-91.1344980248127	Site id:	LAOG30000091364

### WSW

1/4 - 1/2 Mile

OIL\_GAS

LAOG30000091365

Well seria:	205233	Wlc line i:	1
Coordinate:	01	Received d:	01-DEC-1986
Lambert x:	2062759	Lambert y:	609845
Zone:	S	Create dat:	02-MAY-1999
Create use:	CONVALL	Update dat:	19-SEP-2008
Update use:	OPS\$OOC	Coordinat1:	03
Coordinat2:	1	Ground ele:	Not Reported
Longitude :	3.772	Longitude1:	8
Longitude2:	91	Latitude s:	36.745
Latitude m:	20	Latitude d:	30
Surface la:	Not Reported	Surface lo:	Not Reported
Coordinat3:	17	G utmx:	679315.611630548
G utmy:	3358353.83313309	G laty:	30.3437692870355
G longx:	-91.1344980248127	Site id:	LAOG30000091365

### ESE

1/2 - 1 Mile

OIL\_GAS

LAOG30000091361

Well seria:	48590	Wlc line i:	1
Coordinate:	01	Received d:	01-DEC-1976
Lambert x:	2068683	Lambert y:	609841
Zone:	S	Create dat:	02-MAY-1999
Create use:	CONVALL	Update dat:	19-SEP-2008
Update use:	OPS\$OOC	Coordinat1:	03
Coordinat2:	1	Ground ele:	Not Reported
Longitude :	56.159	Longitude1:	6
Longitude2:	91	Latitude s:	36.599
Latitude m:	20	Latitude d:	30
Surface la:	Not Reported	Surface lo:	Not Reported
Coordinat3:	17	G utmx:	681121.178739211
G utmy:	3358379.19249699	G laty:	30.3437287030611
G longx:	-91.1157179882697	Site id:	LAOG30000091361

### ESE

1/2 - 1 Mile

OIL\_GAS

LAOG30000091355

Well seria:	217715	Wlc line i:	1
Coordinate:	01	Received d:	07-OCT-2003
Lambert x:	2068276	Lambert y:	609818
Zone:	S	Create dat:	08-OCT-2003
Create use:	SONRIS_DBA	Update dat:	19-SEP-2008
Update use:	OPS\$OOC	Coordinat1:	05
Coordinat2:	1	Ground ele:	17.9
Longitude :	Not Reported	Longitude1:	Not Reported
Longitude2:	Not Reported	Latitude s:	Not Reported
Latitude m:	Not Reported	Latitude d:	Not Reported

## GEOCHECK® - PHYSICAL SETTING SOURCE MAP FINDINGS

Surface la:	30.34343748	Surface lo:	91.11689143
Coordinat3:	9	G utmx:	680997.233784455
G utmy:	3358370.3562524	G laty:	30.3436675798636
G longx:	-91.1170083827229	Site id:	LAOG30000091355

### ESE

1/2 - 1 Mile

OIL\_GAS

LAOG30000091343

Well seria:	182885	Wlc line i:	1
Coordinate:	01	Received d:	01-SEP-1982
Lambert x:	2068380	Lambert y:	609700
Zone:	S	Create dat:	02-MAY-1999
Create use:	CONVALL	Update dat:	19-SEP-2008
Update use:	OPS\$OOC	Coordinat1:	01
Coordinat2:	1	Ground ele:	Not Reported
Longitude :	59.627	Longitude1:	6
Longitude2:	91	Latitude s:	35.208
Latitude m:	20	Latitude d:	30
Surface la:	Not Reported	Surface lo:	Not Reported
Coordinat3:	5	G utmx:	681029.461030982
G utmy:	3358334.85806599	G laty:	30.3433425850232
G longx:	-91.1166793927904	Site id:	LAOG30000091343

### ESE

1/2 - 1 Mile

OIL\_GAS

LAOG30000091341

Well seria:	181530	Wlc line i:	1
Coordinate:	01	Received d:	01-JUN-1982
Lambert x:	2068300	Lambert y:	609690
Zone:	S	Create dat:	02-MAY-1999
Create use:	CONVALL	Update dat:	19-SEP-2008
Update use:	OPS\$OOC	Coordinat1:	03
Coordinat2:	1	Ground ele:	Not Reported
Longitude :	.54	Longitude1:	7
Longitude2:	91	Latitude s:	35.111
Latitude m:	20	Latitude d:	30
Surface la:	Not Reported	Surface lo:	Not Reported
Coordinat3:	17	G utmx:	681005.122973146
G utmy:	3358331.45125694	G laty:	30.3433155043131
G longx:	-91.1169330647893	Site id:	LAOG30000091341

### SSE

1/4 - 1/2 Mile

OIL\_GAS

LAOG30000091183

Well seria:	174333	Wlc line i:	1
Coordinate:	01	Received d:	01-FEB-1982
Lambert x:	2066510	Lambert y:	608250
Zone:	S	Create dat:	02-MAY-1999
Create use:	CONVALL	Update dat:	19-SEP-2008
Update use:	OPS\$OOC	Coordinat1:	03
Coordinat2:	Not Reported	Ground ele:	Not Reported
Longitude :	20.998	Longitude1:	7
Longitude2:	91	Latitude s:	20.889
Latitude m:	20	Latitude d:	30

# GEOCHECK® - PHYSICAL SETTING SOURCE MAP FINDINGS

Surface la:	Not Reported	Surface lo:	Not Reported
Coordinat3:	17	G utmx:	680466.015976202
G utmy:	3357884.52838251	G laty:	30.3393652216486
G longx:	-91.1226160265627	Site id:	LAOG30000091183

**SW**

1/2 - 1 Mile

**OIL\_GAS**

**LAOG30000091006**

Well seria:	135632	Wlc line i:	1
Coordinate:	01	Received d:	01-DEC-1976
Lambert x:	2062096	Lambert y:	606592
Zone:	S	Create dat:	02-MAY-1999
Create use:	CONVALL	Update dat:	19-SEP-2008
Update use:	OPS\$OOC	Coordinat1:	03
Coordinat2:	1	Ground ele:	Not Reported
Longitude :	11.4	Longitude1:	8
Longitude2:	91	Latitude s:	4.559
Latitude m:	20	Latitude d:	30
Surface la:	Not Reported	Surface lo:	Not Reported
Coordinat3:	17	G utmx:	679128.131224694
G utmy:	3357359.39587231	G laty:	30.334827914746
G longx:	-91.1366175407606	Site id:	LAOG30000091006

**SW**

1/2 - 1 Mile

**OIL\_GAS**

**LAOG30000091007**

Well seria:	144908	Wlc line i:	1
Coordinate:	01	Received d:	01-DEC-1976
Lambert x:	2062096	Lambert y:	606592
Zone:	S	Create dat:	02-MAY-1999
Create use:	CONVALL	Update dat:	19-SEP-2008
Update use:	OPS\$OOC	Coordinat1:	03
Coordinat2:	1	Ground ele:	Not Reported
Longitude :	11.4	Longitude1:	8
Longitude2:	91	Latitude s:	4.559
Latitude m:	20	Latitude d:	30
Surface la:	Not Reported	Surface lo:	Not Reported
Coordinat3:	17	G utmx:	679128.131224694
G utmy:	3357359.39587231	G laty:	30.334827914746
G longx:	-91.1366175407606	Site id:	LAOG30000091007

**SSW**

1/2 - 1 Mile

**OIL\_GAS**

**LAOG30000090975**

Well seria:	82817	Wlc line i:	1
Coordinate:	01	Received d:	01-DEC-1976
Lambert x:	2063453	Lambert y:	606340
Zone:	S	Create dat:	02-MAY-1999
Create use:	CONVALL	Update dat:	19-SEP-2008
Update use:	OPS\$OOC	Coordinat1:	03
Coordinat2:	1	Ground ele:	Not Reported
Longitude :	55.919	Longitude1:	7
Longitude2:	91	Latitude s:	2.039
Latitude m:	20	Latitude d:	30

## GEOCHECK® - PHYSICAL SETTING SOURCE MAP FINDINGS

Surface Ia: Not Reported  
Coordinat3: 17  
G utmy: 3357288.67614753  
G longx: -91.1323174124825

Surface lo: Not Reported  
G utmx: 679542.854132954  
G lathy: 30.3341285368951  
Site id: LAOG30000090975



# GEOCHECK® - PHYSICAL SETTING SOURCE MAP FINDINGS RADON

## AREA RADON INFORMATION

Federal EPA Radon Zone for EAST BATON ROUGE County: 3

- Note: Zone 1 indoor average level > 4 pCi/L.  
 : Zone 2 indoor average level  $\geq$  2 pCi/L and  $\leq$  4 pCi/L.  
 : Zone 3 indoor average level < 2 pCi/L.

Federal Area Radon Information for Zip Code: 70810

Number of sites tested: 10

Area	Average Activity	% <4 pCi/L	% 4-20 pCi/L	% >20 pCi/L
Living Area - 1st Floor	0.430 pCi/L	100%	0%	0%
Living Area - 2nd Floor	Not Reported	Not Reported	Not Reported	Not Reported
Basement	Not Reported	Not Reported	Not Reported	Not Reported

# PHYSICAL SETTING SOURCE RECORDS SEARCHED

## TOPOGRAPHIC INFORMATION

### USGS 7.5' Digital Elevation Model (DEM)

Source: United States Geologic Survey

EDR acquired the USGS 7.5' Digital Elevation Model in 2002 and updated it in 2006. The 7.5 minute DEM corresponds to the USGS 1:24,000- and 1:25,000-scale topographic quadrangle maps. The DEM provides elevation data with consistent elevation units and projection.

### Scanned Digital USGS 7.5' Topographic Map (DRG)

Source: United States Geologic Survey

A digital raster graphic (DRG) is a scanned image of a U.S. Geological Survey topographic map. The map images are made by scanning published paper maps on high-resolution scanners. The raster image is georeferenced and fit to the Universal Transverse Mercator (UTM) projection.

## HYDROLOGIC INFORMATION

**Flood Zone Data:** This data, available in select counties across the country, was obtained by EDR in 1999 from the Federal Emergency Management Agency (FEMA). Data depicts 100-year and 500-year flood zones as defined by FEMA.

**NWI:** National Wetlands Inventory. This data, available in select counties across the country, was obtained by EDR in 2002 and 2005 from the U.S. Fish and Wildlife Service.

## HYDROGEOLOGIC INFORMATION

### AQUIFLOW<sup>R</sup> Information System

Source: EDR proprietary database of groundwater flow information

EDR has developed the AQUIFLOW Information System (AIS) to provide data on the general direction of groundwater flow at specific points. EDR has reviewed reports submitted to regulatory authorities at select sites and has extracted the date of the report, hydrogeologically determined groundwater flow direction and depth to water table information.

## GEOLOGIC INFORMATION

### Geologic Age and Rock Stratigraphic Unit

Source: P.G. Schruben, R.E. Arndt and W.J. Bawiec, Geology of the Conterminous U.S. at 1:2,500,000 Scale - A digital representation of the 1974 P.B. King and H.M. Beikman Map, USGS Digital Data Series DDS - 11 (1994).

### STATSGO: State Soil Geographic Database

Source: Department of Agriculture, Natural Resources Conservation Services

The U.S. Department of Agriculture's (USDA) Natural Resources Conservation Service (NRCS) leads the national Conservation Soil Survey (NCSS) and is responsible for collecting, storing, maintaining and distributing soil survey information for privately owned lands in the United States. A soil map in a soil survey is a representation of soil patterns in a landscape. Soil maps for STATSGO are compiled by generalizing more detailed (SSURGO) soil survey maps.

### SSURGO: Soil Survey Geographic Database

Source: Department of Agriculture, Natural Resources Conservation Services (NRCS)

Telephone: 800-672-5559

SSURGO is the most detailed level of mapping done by the Natural Resources Conservation Services, mapping scales generally range from 1:12,000 to 1:63,360. Field mapping methods using national standards are used to construct the soil maps in the Soil Survey Geographic (SSURGO) database. SSURGO digitizing duplicates the original soil survey maps. This level of mapping is designed for use by landowners, townships and county natural resource planning and management.

# PHYSICAL SETTING SOURCE RECORDS SEARCHED

## LOCAL / REGIONAL WATER AGENCY RECORDS

### FEDERAL WATER WELLS

#### PWS: Public Water Systems

Source: EPA/Office of Drinking Water

Telephone: 202-564-3750

Public Water System data from the Federal Reporting Data System. A PWS is any water system which provides water to at least 25 people for at least 60 days annually. PWSs provide water from wells, rivers and other sources.

#### PWS ENF: Public Water Systems Violation and Enforcement Data

Source: EPA/Office of Drinking Water

Telephone: 202-564-3750

Violation and Enforcement data for Public Water Systems from the Safe Drinking Water Information System (SDWIS) after August 1995. Prior to August 1995, the data came from the Federal Reporting Data System (FRDS).

#### USGS Water Wells: USGS National Water Inventory System (NWIS)

This database contains descriptive information on sites where the USGS collects or has collected data on surface water and/or groundwater. The groundwater data includes information on wells, springs, and other sources of groundwater.

### STATE RECORDS

#### Louisiana Public Water Supply Wells

Source: Office of Public Health

Telephone: 504-568-5101

#### Water Well Registration Data File

Source: Department of Transportation and Development

Telephone: 225-274-4172

## OTHER STATE DATABASE INFORMATION

### Oil and Gas Well Database

Source: Department of Natural Resources

Telephone: 225-342-1977

Oil and gas well locations in Louisiana.

### RADON

#### State Database: LA Radon

Source: Department of Environmental Quality

Telephone: 225-925-1752

Radon Levels

#### Area Radon Information

Source: USGS

Telephone: 703-356-4020

The National Radon Database has been developed by the U.S. Environmental Protection Agency (USEPA) and is a compilation of the EPA/State Residential Radon Survey and the National Residential Radon Survey. The study covers the years 1986 - 1992. Where necessary data has been supplemented by information collected at private sources such as universities and research institutions.

#### EPA Radon Zones

Source: EPA

Telephone: 703-356-4020

Sections 307 & 309 of IRAA directed EPA to list and identify areas of U.S. with the potential for elevated indoor radon levels.

## PHYSICAL SETTING SOURCE RECORDS SEARCHED

### OTHER

Airport Landing Facilities: Private and public use landing facilities  
Source: Federal Aviation Administration, 800-457-6656

Epicenters: World earthquake epicenters, Richter 5 or greater  
Source: Department of Commerce, National Oceanic and Atmospheric Administration

### STREET AND ADDRESS INFORMATION

© 2008 Tele Atlas North America, Inc. All rights reserved. This material is proprietary and the subject of copyright protection and other intellectual property rights owned by or licensed to Tele Atlas North America, Inc. The use of this material is subject to the terms of a license agreement. You will be held liable for any unauthorized copying or disclosure of this material.