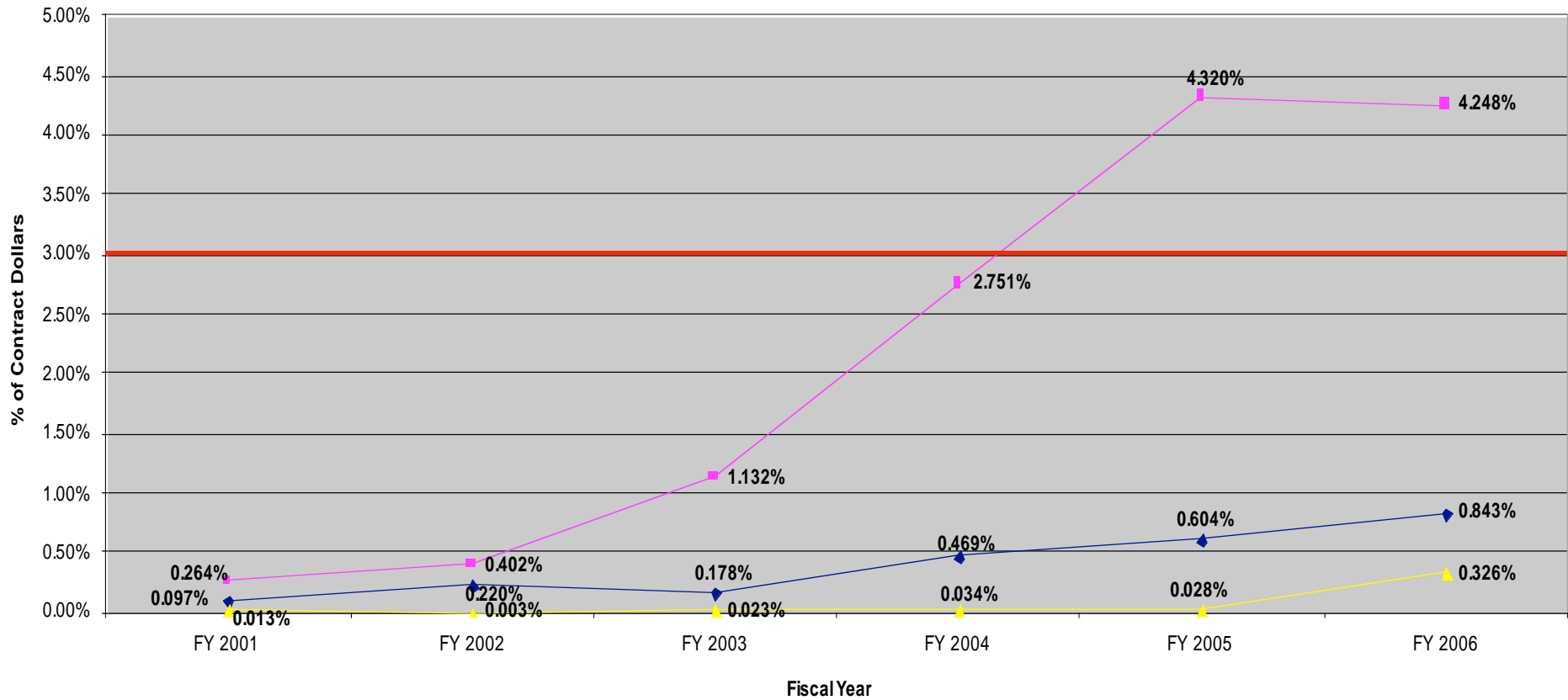


Prime and Subcontracting Percentages

Department of Agriculture

◆ % of SDV OSB Contract Dollars
 ■ % of VOSB Contract Dollars
 ▲ % of SDV OSB Subcontract Dollars



“%” represents the percentage of total prime contract dollars.
 Source of information: SBA Office of Government Contracting -
<http://www.sba.gov/aboutsba/sbaprograms/gc/index.html>

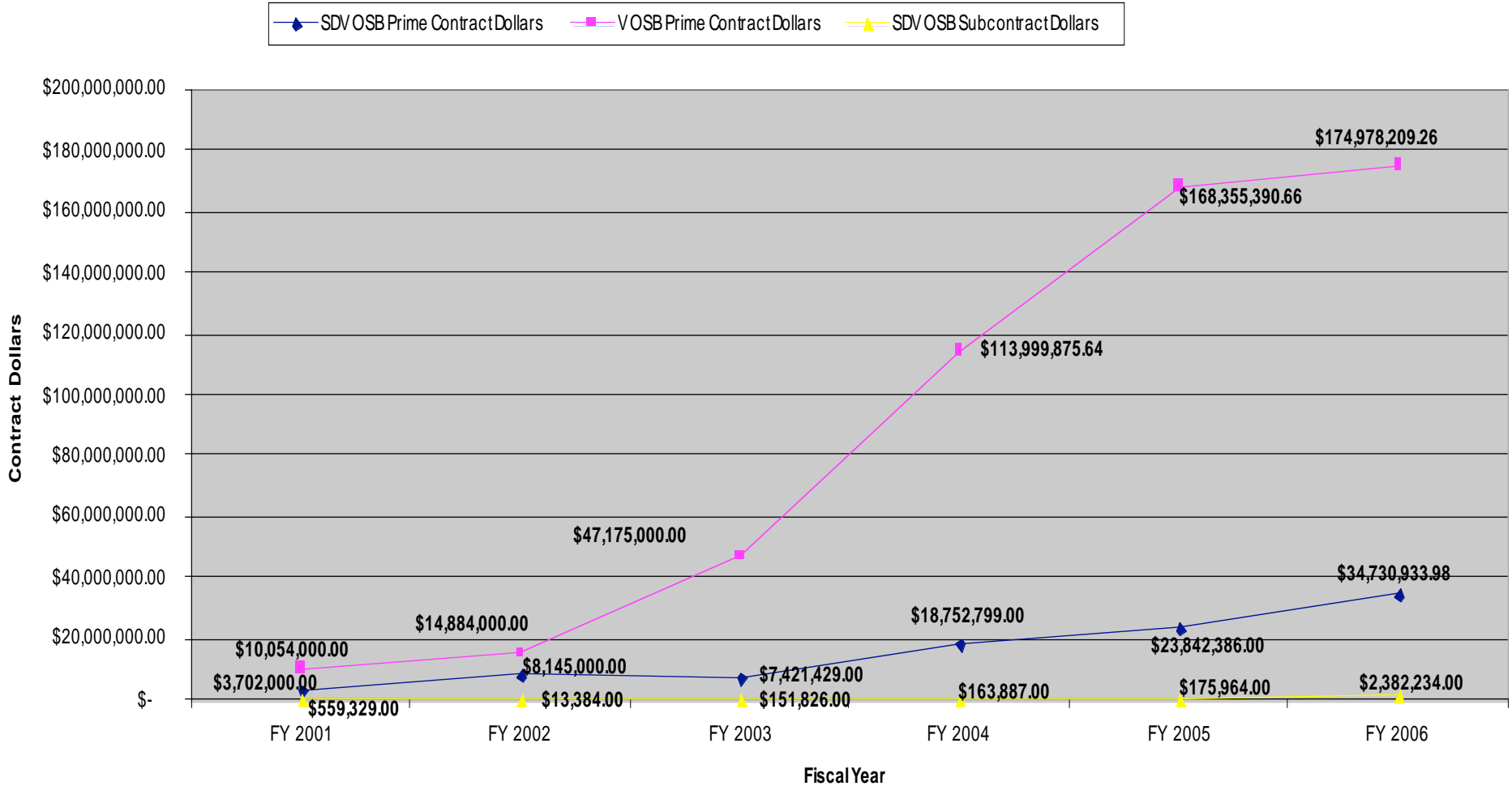
For missing data, please contact the agency directly.



*We are not responsible for the accuracy of the data depicted and questions about the data should be referred to the originating agency's Director for Small Business Programs. Contact information is available at www.OSDBU.gov.

Total Contract Dollars

Department of Agriculture



“\$” represents total prime and sub- contract dollars.
 Source of information: SBA Office of Government Contracting -
<http://www.sba.gov/aboutsba/sbaprograms/gc/index.html>

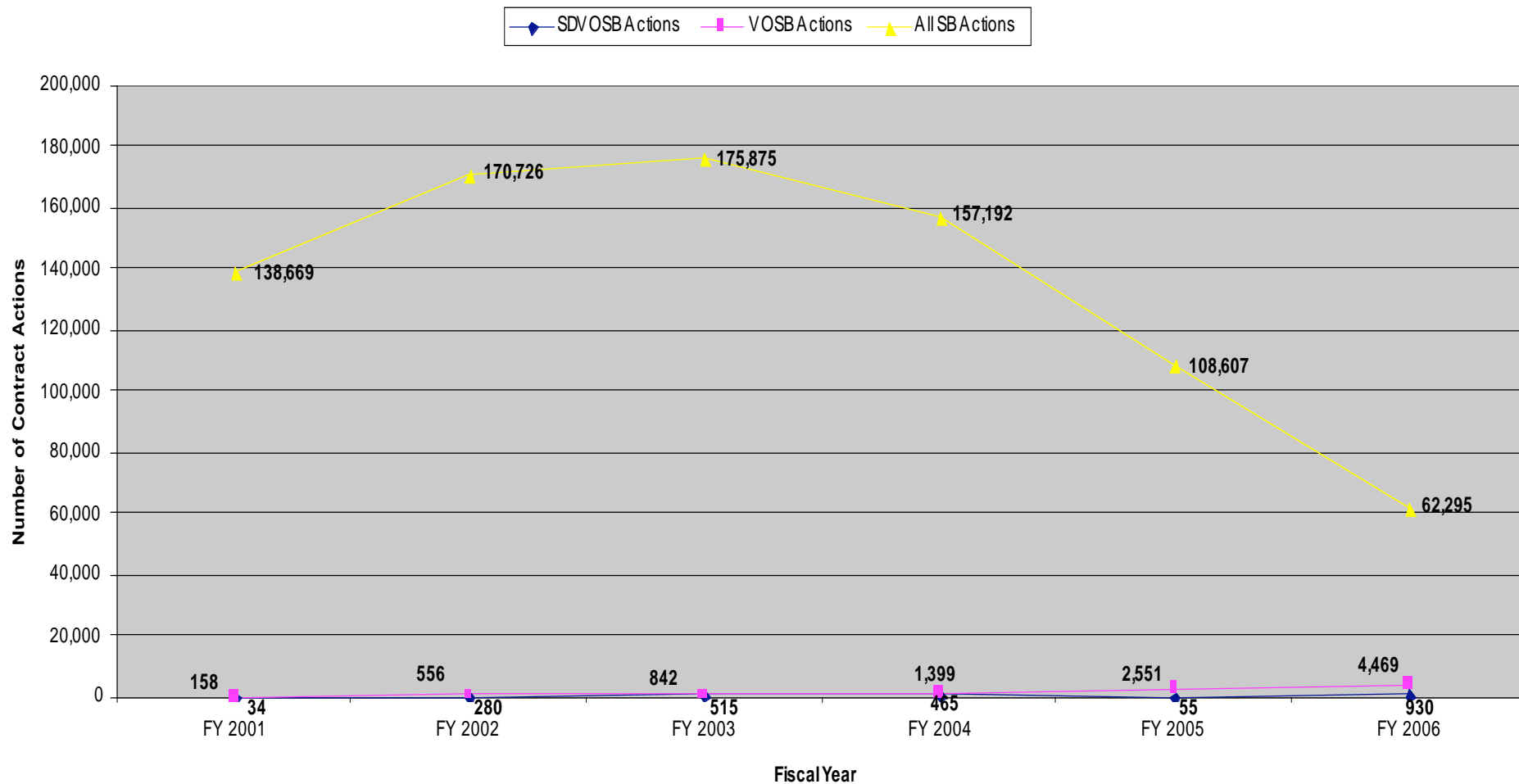
For missing data, please contract the agency directly.



*We are not responsible for the accuracy of the data depicted and questions about the data should be referred to the originating agency's Director for Small Business Programs. Contact information is available at www.OSDBU.gov.

Contract Actions

Department of Agriculture



Source of information: SBA Office of Government Contracting - <http://www.sba.gov/aboutsba/sbaprograms/gc/index.html>



For missing data, please contact the agency directly.

*We are not responsible for the accuracy of the data depicted and questions about the data should be referred to the originating agency's Director for Small Business Programs. Contact information is available at www.OSDBU.gov.