

US Department of the Interior  
Bureau of Land Management  
Coeur d'Alene Field Office



Coeur d'Alene, Idaho  
January, 2008

# BLM Recreation Access Map - Rochat Divide/Pine Creek Area

## Trails not on BLM subject to other travel designations or restrictions

Motorized vehicle travel (except snowmobiles) is limited to designated roads and trails on all BLM managed land, except within areas designated as closed. Some of the designated roads and trails also have vehicle class or seasonal restrictions (see table below). Cross-country motorized travel off designated routes is prohibited, except for snowmobiles. Snowmobiles are allowed to travel off-road on all BLM lands, except where depicted otherwise on this map.

0 0.5 1 2 3 4 Miles



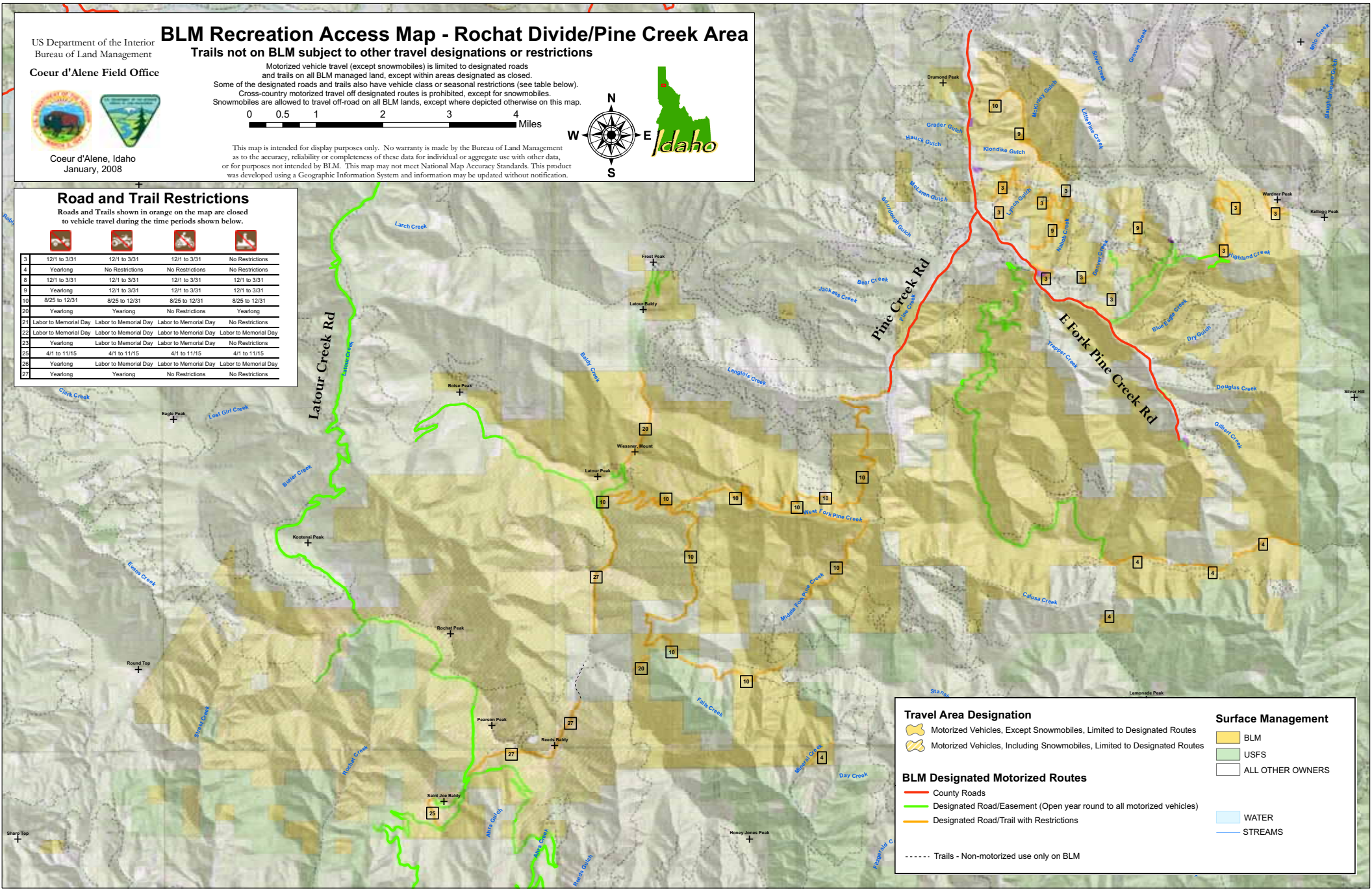
This map is intended for display purposes only. No warranty is made by the Bureau of Land Management as to the accuracy, reliability or completeness of these data for individual or aggregate use with other data, or for purposes not intended by BLM. This map may not meet National Map Accuracy Standards. This product was developed using a Geographic Information System and information may be updated without notification.

### Road and Trail Restrictions

Roads and Trails shown in orange on the map are closed to vehicle travel during the time periods shown below.



Restriction Code	Restriction 1	Restriction 2	Restriction 3	Restriction 4
3	12/1 to 3/31	12/1 to 3/31	12/1 to 3/31	No Restrictions
4	Yearlong	No Restrictions	No Restrictions	No Restrictions
8	12/1 to 3/31	12/1 to 3/31	12/1 to 3/31	12/1 to 3/31
9	Yearlong	12/1 to 3/31	12/1 to 3/31	12/1 to 3/31
10	8/25 to 12/31	8/25 to 12/31	8/25 to 12/31	8/25 to 12/31
20	Yearlong	Yearlong	No Restrictions	Yearlong
21	Labor to Memorial Day	Labor to Memorial Day	Labor to Memorial Day	No Restrictions
22	Labor to Memorial Day	Labor to Memorial Day	Labor to Memorial Day	Labor to Memorial Day
23	Yearlong	Labor to Memorial Day	Labor to Memorial Day	No Restrictions
25	4/1 to 11/15	4/1 to 11/15	4/1 to 11/15	4/1 to 11/15
26	Yearlong	Labor to Memorial Day	Labor to Memorial Day	Labor to Memorial Day
27	Yearlong	Yearlong	No Restrictions	No Restrictions



### Travel Area Designation

- Motorized Vehicles, Except Snowmobiles, Limited to Designated Routes
- Motorized Vehicles, Including Snowmobiles, Limited to Designated Routes

### BLM Designated Motorized Routes

- County Roads
- Designated Road/Easement (Open year round to all motorized vehicles)
- Designated Road/Trail with Restrictions
- Trails - Non-motorized use only on BLM

### Surface Management

- BLM
- USFS
- ALL OTHER OWNERS
- WATER
- STREAMS