

CNMI's Coral Reef Initiative Program



Fran Castro

Point of Contact

Commonwealth of the Northern Mariana Islands

Overview

- **Micronesia Challenge**
- **Sustainable Financing**
- **Talakhaya Revegetation**
- **MPA Accomplishments**
- **Education, Outreach & IYOR**
- **Internship and projects**
- **Military Task Force**
- **Capacity**



Micronesia Challenge

- **Discussions on the approach for marine group**
- **MC Photo Contest**
- **Community meetings**



Sustainable Financing

- **Bill introduced and under review with House Natural Resources Committee**

NOAA assisting with development of sustainable financing plan



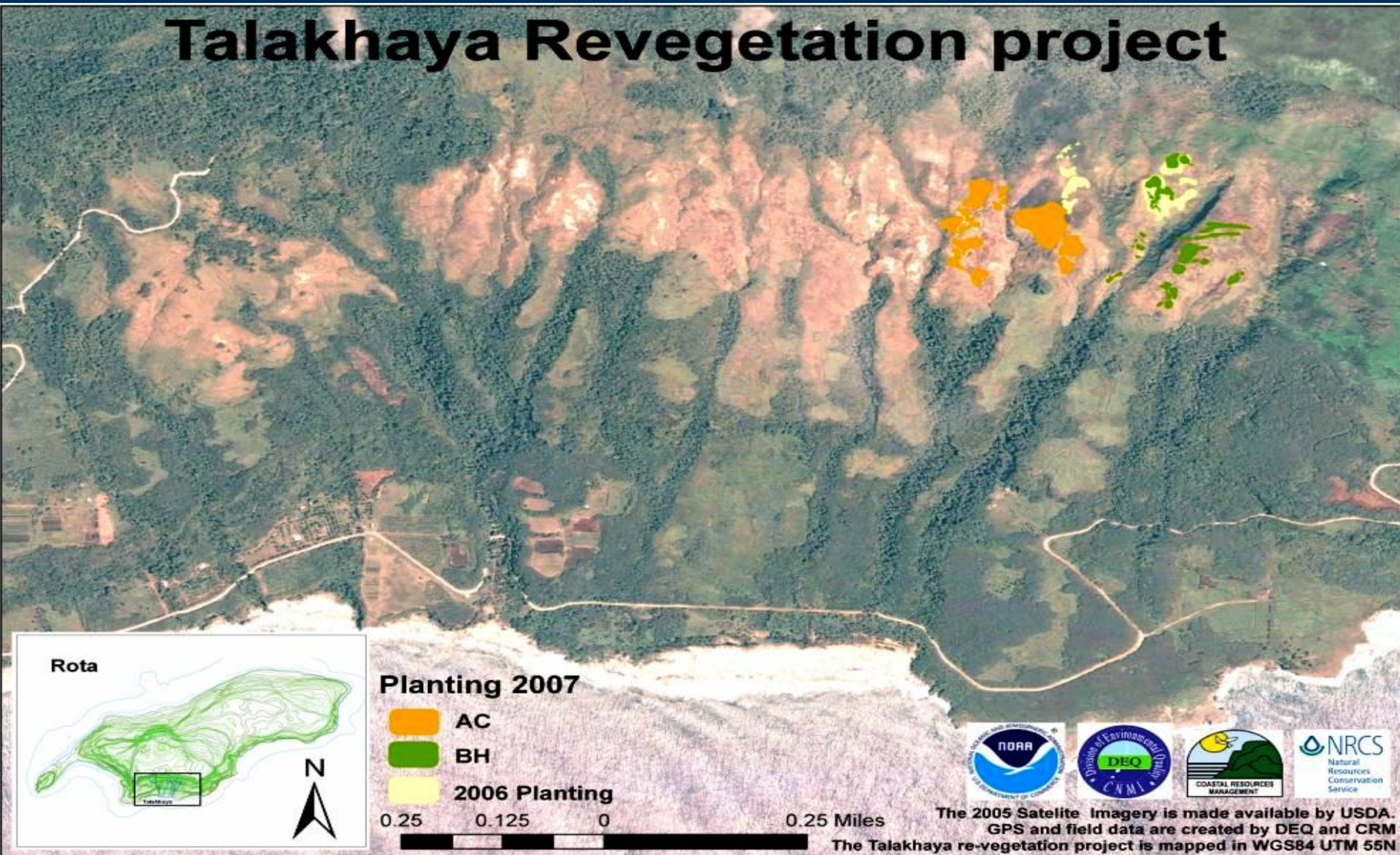
Talakhaya Revegetation Project (LAS)

- Luta Livelihoods Initiative
- 19,000 seedlings planted
- Community & partner collaboration
- NRCS Conservation Plan Finalized
- Phase 1 Complete



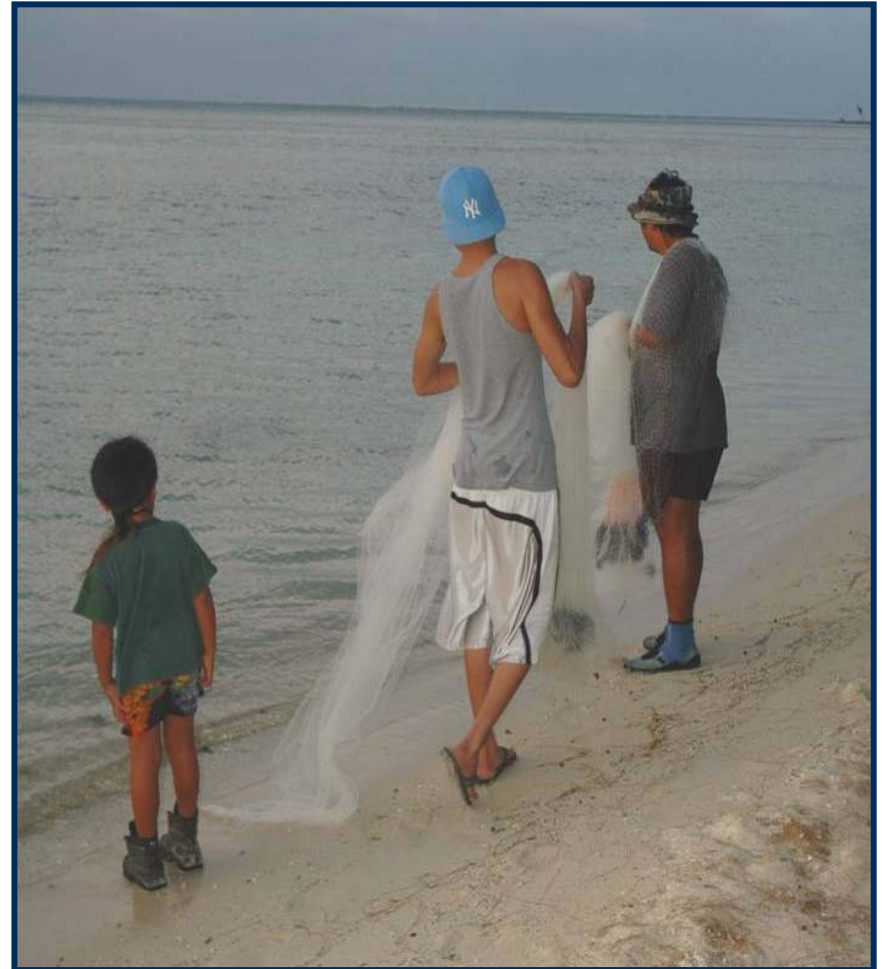
Continued Support for LAS

Talakhaya Revegetation project



CNMI MPA Program Focus: Community Involvement

**PIMPAC partnership
to bring fishermen
from Hawaii and
Pohnpei to share
experiences with
CNMI agencies, NGOs,
and communities
(October)**



Marine Protected Areas: Signage

FORBIDDEN ISLAND
Welcome to our beautiful conservation area!

Please Stay Safe

WARNING!
Enter at your own risk. People have drowned here.
Dangerous currents and waves possible, even when water looks calm.
Dangerous cliffs and difficult trail.
Never enter the ocean without a local guide.

Conservation Area Rules

- No Hunting
- No Fishing
- No Feeding
- No Collecting (Dead or Alive)

TO REPORT VIOLATIONS: Call DFW 664-6000 (daytime), 898-3570 (24hrs), or DPS (911).

HELP PROTECT ALL OF OUR CONSERVATION AREAS

- Forbidden Island Sanctuary (Includes Tank Beach)
- Bird Island Sanctuary (Includes The Grotto)
- Mañagaha Marine Conservation Area
- Kagman Wildlife Conservation Area (Forbidden Island to Tank Beach)
- Bird Island Wildlife Conservation Area - Marpi Commonwealth Forest

New interpretive signs designed & installed



Forbidden Island
Marine
Conservation
Area

FORBIDDEN ISLAND

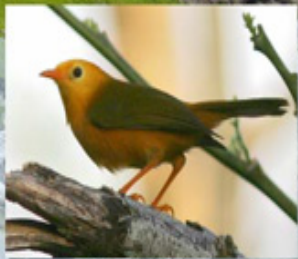
This is a Marine and Wildlife Conservation Area

Kagman
Wildlife
Conservation
Area

PLEASE RESPECT THIS SPECIAL PLACE



White-tailed Tropicbird
(*Phaethon lepturus*)



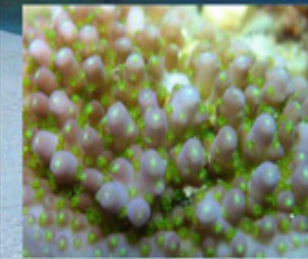
The endemic Golden White-eye
(*Cleptornis marchei*)



Green Sea Turtle
(*Chelonia mydas*)



Strawberry Land Hermit Crabs
(*Coenobita perlatus*)
in Turban shells (*Turbo argyrostomus*).



Coral
(*Acropora cerealis*)



Banded sergeant fish
(*Abudefduf septemfasciatus*)
and a coral (*Porites* sp.) at Forbidden Island

Please Report All Violations: 664-6000 (DFW), 898-3570 (DFW 24hrs), 911(DPS), or 234-PARA (Crimestoppers)

MPA Boundaries

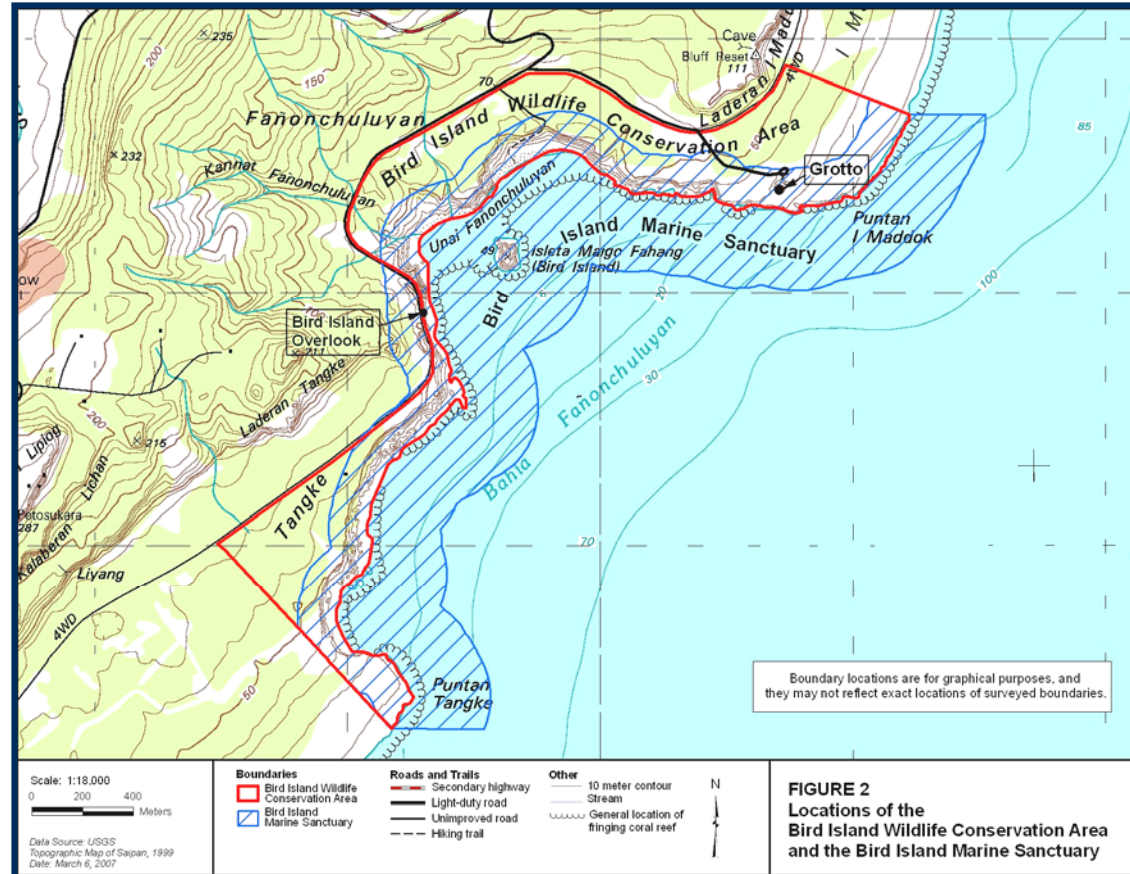
Alignment of MPA Boundaries with Wildlife Conservation Area Boundaries

Orientation of MPA Boundaries in East-West Direction to aid with enforcement and compliance.



MPA Boundaries cont.

Finalization and Certification of Official MPA Boundary Maps in AutoCAD (official survey plats) and ArcGIS



MPA Outreach and Education

Outreach Booth at Community Events



MPA Activities in Rota

- Fisherman's meeting to foster community engagement in fisheries management
- Enforcement strategic planning to build capacity and identify training needs
- 2nd Annual Rota Eco Camp MPA Activity with 35 students, aired on local TV for 4 months



- High school group trained in marine monitoring, bilingual MPA puppet show for elementary schools and ecotourism booklet highlighting MPA

MPA Management

Completed Management Plans for

- Mañagaha Marine Conservation Area
- Forbidden Island
- Bird Island Sanctuary



Education and Outreach

- Dive, Snorkel, Protect Brochure
- Movie Theater Ad



- Magnets
- Placemats



Education & Outreach, cont'd

Marianas Pride Magazine

INTERNATIONAL YEAR of the REEF 2008

CORAL REEF FOOD WEB

Zooxanthellae are tiny single-celled algae that live inside of corals and clams. These algae provide ~ 90% of the food for these animals. Zooxanthellae form the base of the coral reef food web.

The piggy of a table coral will eat lots of zooxanthellae, being within the coral reef food web.

The piggy of a table coral will eat lots of zooxanthellae, being within the coral reef food web.

Logos: Department of Fish & Wildlife Resources, Department of Environmental Quality (DEQ), CNMI MMT, MICs (Marianas Island Council of Scientists), Coastal Resources Management, and others.

Pre-Public Education Survey

The CNMI Public:

Support for Measures to Better Manage Change to Coral Reefs

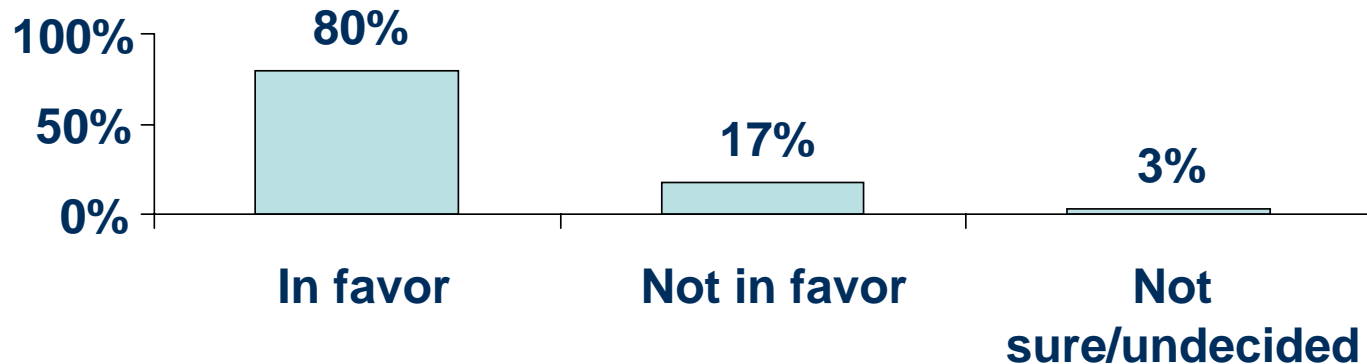
DP3. Would you support, or not support...	Not Support	Support	Don't Know	Total (N)
A. Setting and enforcing stricter rules on development?	8%	91%	1%	(401)
B. Improving the sewage system by repair/extending sewage pipe?	7%	93%	1%	(400)
C. Expanding the marine protected areas?	8%	90%	2%	(401)
D. Introducing a user fee for foreign scuba divers and snorkelers?	25%	71%	3%	(401)
E. Increasing the penalties for violators of existing laws?	11%	89%	1%	(401)
F. Educating children and general public about the marine ecosystem?	1%	99%	0%	(401)

Nine out of ten CNMI residents support a range of measures to better manage change to the reefs.

71% of the public support introduction of a user fee for foreign scuba divers and snorkelers.

The CNMI Public: Support for CNMI Spending More on Maintaining Coral Reefs

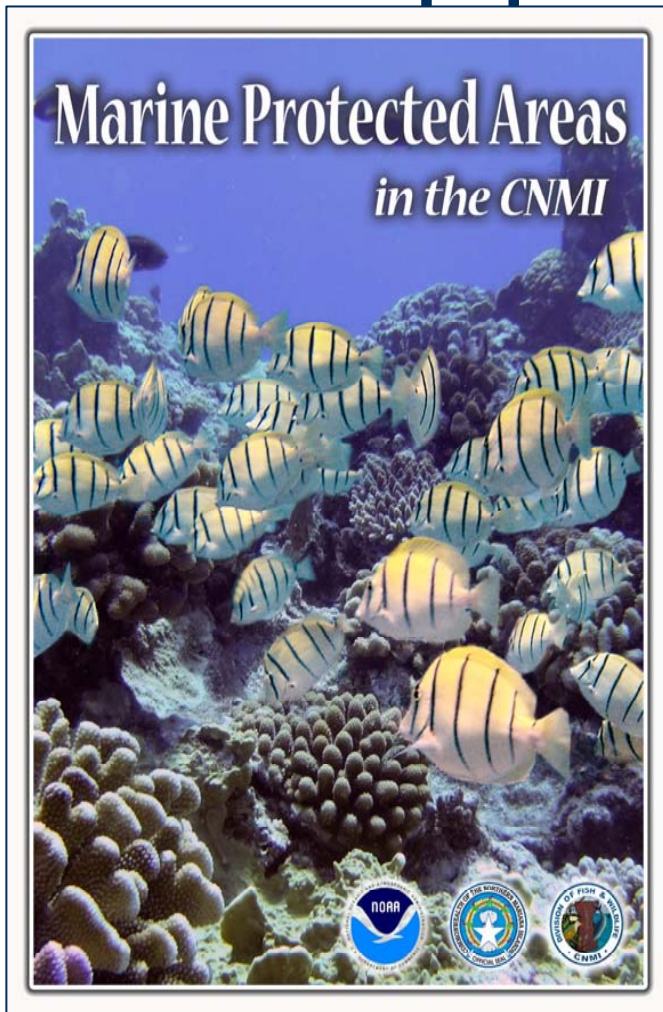
**PS1. In general, are you in favor, or not in favor, of the CNMI spending more money on maintaining the local coral reef environment?
(N=393)**



The CNMI public gives “in general” support for the CNMI spending more to maintain the local reefs, with 80% saying they are “in favor”.

2007 Summer Internship Outreach Products

MPA newspaper insert



Green Guide

- Tri lingual
- Local and tourist audience
- Environmental friendly action guide

IYOR Calendar



CNMI IYOR Overview

Increase awareness



→ Community involvement

Build a Castle, Save a Reef!

- 16 Schools Participated
- Awareness to protect reefs



CNMI's IYOR 2008 Activities

January

- Proclamation
- IYOR Calendar distribution
- Bus Stop Mural Painting

February

- MPA Puppet Show Performance at
Flame Tree Arts Festival

April

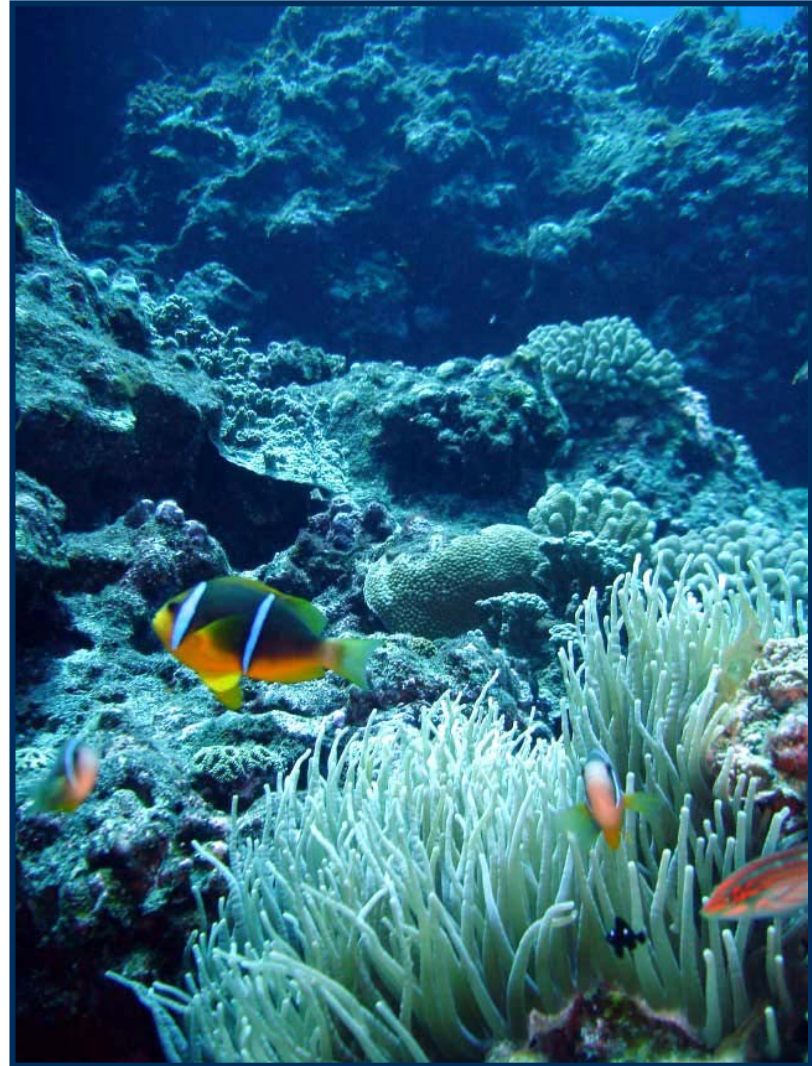
- Coral Reef Parade and Concert

July

- World's Largest Dive Cleanup
- 3rd Annual Eco Camp

October

- Underwater Scavenger Hunt



Military Task Force

- **Governor established military task force**
- **Preparation for military build-up in Guam that will extend to the CNMI**

MPA Program Specialist
2005-2007



Coral Management Fellow
2006-2008



Resolution for CNMI Coral Reef Initiative Program



- **Enforcement Capacity & Training**
- **Support for IYOR Activities**
- **Assistance in development of New Round of Local Action Strategies**
- **Support for Micronesia Challenge**

- **Community Participation in MPA management**
- **Sustainable Development Plan**
- **Develop new round of LAS's**

A tropical sunset scene with palm trees and a body of water. The sky is filled with orange and yellow clouds, and the water is calm. A palm tree trunk is visible in the foreground, and some rocks are in the water.

**Si Yu'us Ma'ase
Fa'afetai
Thank You!**