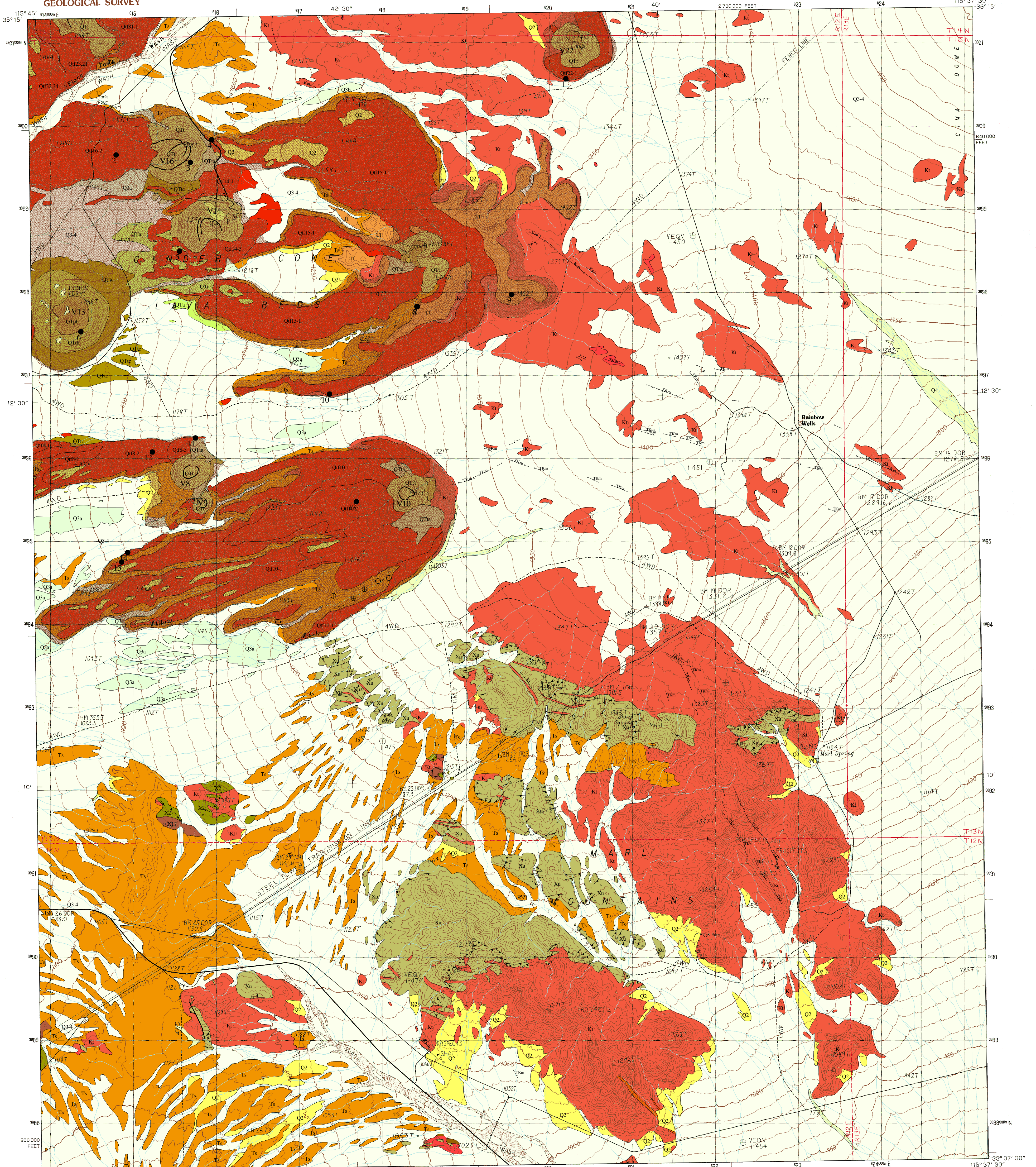


UNITED STATES
DEPARTMENT OF THE INTERIOR
GEOLOGICAL SURVEY

MARL MOUNTAINS QUADRANGLE
CALIFORNIA—SAN BERNARDINO CO.
7.5 MINUTE SERIES (TOPOGRAPHIC)



PRODUCED BY THE UNITED STATES GEOLOGICAL SURVEY
CONTROL BY THE UNITED STATES GEOLOGICAL SURVEY
USGS, NOS/NOAA
COMPILED FROM AERIAL PHOTOGRAPHS TAKEN 1978
FIELD CHECKED 1980, MAP EDITED 1978
PROJECTION UNIVERSAL TRANSVERSE MERCATOR
GRID 1000-METER UNIVERSAL TRANSVERSE MERCATOR
10,000-FOOT STATE GRID TICS
CALIFORNIA ZONE 5
UTM GRID DECLINATION 045° EAST
1980 MAGNETIC NORTH DECLINATION 18° EAST
VERTICAL DATUM NATIONAL GEODETIC VERTICAL DATUM OF 1929
HORIZONTAL DATUM 1927 NORTH AMERICAN DATUM
To place on the predicted North American Datum of 1983,
move the projection lines as shown by dashed corner ticks
(3 meters north / 77 meters east)
There may be private inholdings within the boundaries of any
Federal and State Reservations shown on this map
Certain land lines are omitted because of insufficient data

PROVISIONAL MAP
Produced from original
manuscript drawings. Information
shown as of date of
field check.

SCALE 1:24 000
KILOMETERS
METERS
MILES
FEET

CONTOUR INTERVAL 10 METERS
CONTROL ELEVATIONS SHOWN TO THE NEAREST 0.1 METER
OTHER ELEVATIONS SHOWN TO THE NEAREST METER
To convert meters to feet multiply by 3.2808
To convert feet to meters multiply by 0.3048

THIS MAP COMPLIES WITH NATIONAL MAP ACCURACY STANDARDS
FOR SALE BY U.S. GEOLOGICAL SURVEY, DENVER, COLORADO 80225, OR RESTON, VIRGINIA 22092

ROAD LEGEND

- Improved Road
- Unimproved Road
- Trail
- Interstate Route
- U.S. Route
- State Route

QUADRANGLE LOCATION

1	2	3	Granite Spring
4	5	6	Cow Cove
7	8	9	Cima Dome
			Indian Spring
			Cima
			Old Dad Mtn.
			Kaloo
			Hayden

ADJOINING 7.5' QUADRANGLE NAMES

MARL MOUNTAINS, CALIF.
PROVISIONAL EDITION 1983
35115-B6-TM-024

Digital Version of 'Open-File Report 92-182: Geologic Map of the Marl Mountains Quadrangle, San Bernardino County, California'
Geology By
Howard G. Wilshire
GIS Database By
David R. Bedford and Teresa Coleman
2002