



October 2008

JIO Funds \$1 Million for Wildlife Friendly Fencing

JIO Project Coordinator Ted Rentmeister presented a letter confirming the award at the unveiling of an interpretive sign celebrating the pronghorn migration through Bridger-Teton National Forest land. "As an interagency organization consisting of BLM, DEQ, WYGFD, and the Wyoming Department of Agriculture, we are proud to be a participant in addressing obstacles facing the 'Path of the Pronghorn,'" said Rentmeister.

Through the Wildlife-Friendly Fencing Initiative, the Green River Valley Land Trust (GRVLT) hopes to work with interested landowners to provide 500 miles of cost-free wildlife-friendly fence throughout Sublette County in the next five years.

The Wildlife-Friendly Fencing Initiative began in August by working with landowners on an inventory of existing fences within a portion of the pronghorn route from the Forest Service boundary to Trappers Point. The GRVLT then evaluated which fences most affect pronghorn and other big game migration based on objective criteria by private landowners and other project partners. Based on this information, the GRVLT is now working with landowners to reconstruct/modify those fences to **facilitate better big game movement and monitor those efforts to evaluate the project's effectiveness.** The JIO grant requires 1:1 match, meaning that GRVLT must raise an additional million dollars. The GRVLT is working with other groups, including oil and gas companies, corporations, sportsmen groups, foundations, other conservation organizations, and individuals to secure the needed match.

The GRVLT intends the project to serve as a model for collaborative efforts throughout the Northern Rockies by bringing non-traditional partners together to develop concrete, affordable, on-the-ground ways that landowners and others can choose to maintain the migration route. "We applaud these efforts to protect wildlife corridors in Wyoming, and we hope it is just the beginning," said Governor Dave Freudenthal of Wyoming. "This effort is an example of the right way to approach this challenge, by sitting down with landowners and negotiating with them on how best to protect corridors that border or cross their land. An important ingredient here is the recognition of the paramount nature of private property rights as we work with our federal partners."

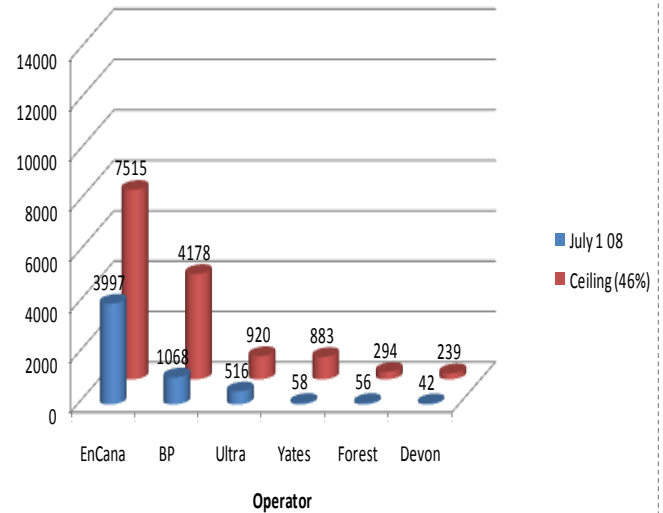
Inside this issue:

<i>JIO Funds 1 million for Wildlife Friendly Fencing Initiative</i>	<i>Page 1</i>
<i>Jonah Surface Disturbance Report</i>	<i>Page 2</i>
<i>Mitigation Map</i>	<i>Page 3</i>
<i>Pinedale Air Quality Station</i>	<i>Page 4</i>
<i>Compliance in the Jonah and Pinedale Natural Gas Fields</i>	<i>Page 5</i>
<i>Mat Pads Roll-Over</i>	<i>Page 6</i>

Jonah Surface Disturbance Report

One of the many innovations in the Jonah Record of Decision was the establishment of an acreage “roll-over” credit. What that means is although a total of 20,334 acres are allowed to be disturbed in Jonah, only 14,030 (46% of the 30,500 ac. field) can be disturbed at any given time. Therefore, once the 14,030 mark is reached, land must be successfully reclaimed in order for more acreage to be disturbed. This “roll-over” caveat gives an incentive for gas operators to restore the land to a functioning ecosystem as quickly as possible. This requirement also demands close attention to surface disturbance tracking.

Disturbance tracking by Operator



The graph on the upper right shows field disturbance by operator as of July 1st. The column in blue indicates the number of acres disturbed, the column in red indicates how many acres are allowed before requiring roll-over for additional disturbance.

The graph on the bottom right shows total field disturbance by operator. Notice, total field disturbance on July 1st was 5737 acres.

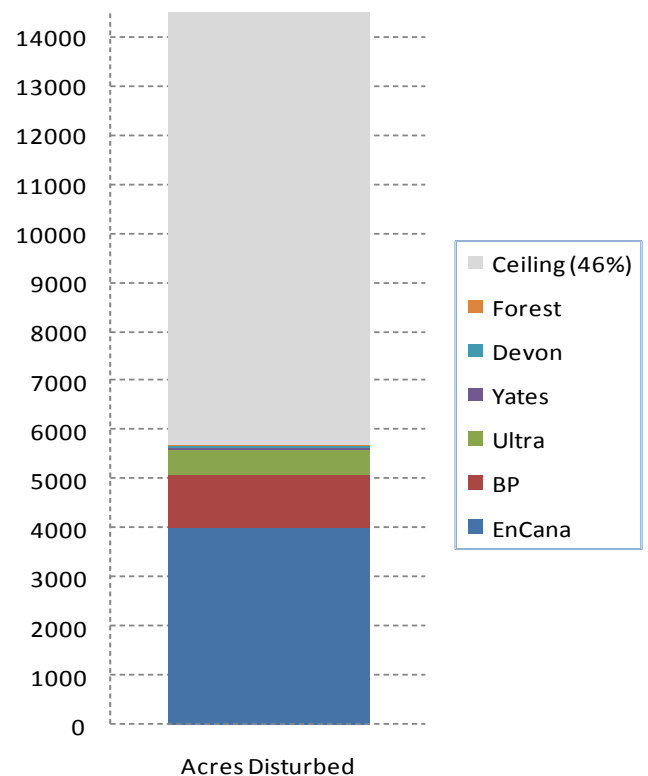
You may review the Reclamation Criteria at:

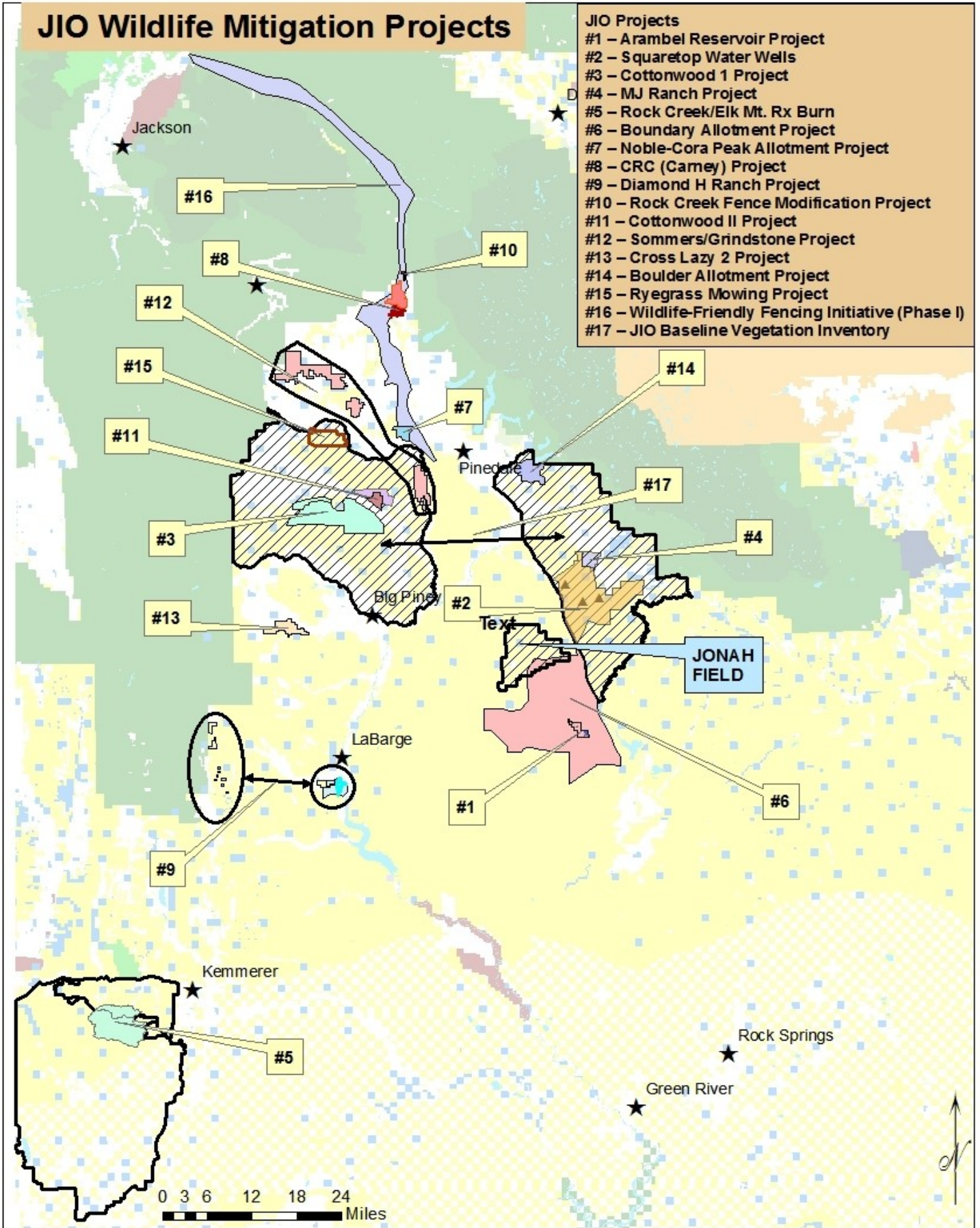
http://www.wy.blm.gov/jonah_office/docs/reclamation_criteria_020807.pdf

STAY TUNED

Disturbance is tracked on a bi-annual basis and updated versions will be available in following newsletters.

Current Field Disturbance by Operator as of 7/1/08





Ambient Air Quality Monitoring Station To Be Located In Pinedale

The Wyoming Department of Environmental Quality (DEQ) will be locating an ambient air quality monitoring station in the Town of Pinedale to enhance the current monitoring network in the Upper Green River Basin. The new station will be located in a city lot the Town of Pinedale graciously provided. The city council voted unanimously to approve the location selected by DEQ and Meteorological Solutions, Inc. The station is scheduled to be fully operational by early December 2008 and will measure ambient air concentrations of ozone, nitrous oxides, and particulate matter (PM_{2.5}). Meteorological conditions will also be measured. In addition, the real-time measurements will be made available to the public via the **station's web site**. **DEQ is also hoping to engage interested Pinedale science students so that they may understand ozone events and how the ambient air is monitored.**

Photo courtesy of Google Earth (2005).



Compliance in the Jonah and Pinedale Natural Gas Fields

The Wyoming Department of Environmental Quality (DEQ) currently staffs a full-time field inspector through funds provided by the Jonah Interagency Office. The field inspector's duties consist of going into the Jonah Natural Gas Field and verifying compliance with air quality permit conditions as well as keeping track of air quality-related commitments designated in the Jonah Infill Development Project's Record of Decision. In addition to the full-time Jonah inspector, the DEQ staffs inspectors that look at Southwest Wyoming (including the Jonah and Pinedale Area) through the District Five Office located in Lander.

All major sources (i.e., compressor stations) and minor sources (i.e., individual natural gas production equipment [dehydration units, tanks]) are subject to inspection. Utilizing sensory techniques and an infrared camera, the inspectors are in the field on a weekly basis ensuring equipment is operating as permitted. The DEQ also maintains an enforcement website located at <http://deq.state.wy.us/out/Enforcementactionmainpage.htm>





Mat Pads Roll Over

In 2008, the BLM approved two more mat pad locations for roll-over release. After EnCana Oil and Gas requested the sites be inspected, staff from the JIO and BLM conducted vegetative monitoring and confirmed locations SHB 61-28 and SHB 68-28 indeed met the roll-over criteria.

This is the second year EnCana has had mat pads meet the roll-over criteria and we are excited to see how successful the mat locations are proving to be for reclamation.



Mat Location Stud Horse Butte 68-28



Mat Location Stud Horse Butte 61-28

Contact us for more information at:

**BLM Project Coordinator 367-5363
Dan Stroud, WY Game & Fish 367-5387
Jennifer Frazier, WY DEQ / Air Quality 367-5388
Lisa Reinhart, WY Dept. of Agriculture 367-5386**

