

# REPORT OF THE ADVISORY COMMITTEE FOR GPRA PERFORMANCE ASSESSMENT

**FY 2008**

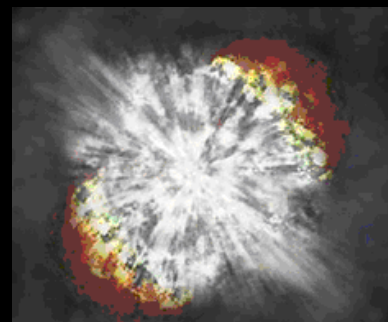
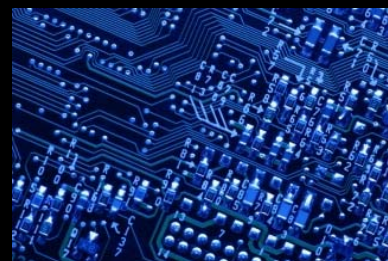
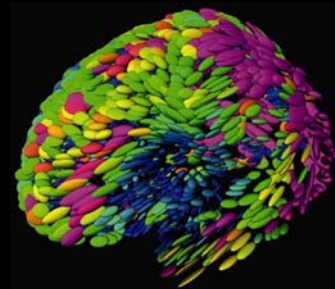
**SUBMITTED: JULY 31, 2008**

**DAVID B. SPENCER, SC.D.**

**CHAIR**

**SHARON DAWES, PH.D.**

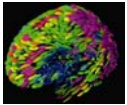
**VICE CHAIR**



## Advisory Committee for GPRA Performance Assessment (AC/GPA)

The Advisory Committee for GPRA Performance Assessment (AC/GPA) was established in June 2002 to provide advice and recommendations to the NSF Director regarding the Foundation's performance under the Government Performance and Results Act (GPRA) of 1993. The Committee meets annually to assess the Foundation's overall performance according to the strategic outcome goals in the NSF Strategic Plan for FY 2006 – 2011. The Committee has responsibility for assessing the three strategic outcome goals of Discovery, Learning, and Research Infrastructure. The Committee is comprised of representatives from academia, industry, and government research organizations. This report was compiled by the Chair, David Spencer, and the Vice Chair, Sharon Dawes, from contributions from all Committee members. It features an Executive Summary with conclusions and recommendations, followed by detailed evaluations organized by strategic goal.

### Cover Photo Information and Credits



Composite image of brain MRIs.

*Credit: Image courtesy of Dr. Paul Thompson, National Institute of Biomedical Imaging and Bioengineering, University of California, Los Angeles.*



Jerome Babauta, Washington State University senior, working with Nigerian students in engineering class. Babauta's work in Nigeria is supported by the Office of International Science and Engineering.

*Credit: Van Wie Research Group, Washington State University*



Image of a printed circuit similar to those used in modern electronics. Model checking, a system for checking the accuracy and reliability of computers and software, has made it possible to create more advanced computer-aided devices that we can depend on in our day-to-day lives.

*Credit: Copyright 2008 JupiterImages Corporation*



Illustration of a supernova explosion. Three exceptionally luminous supernovae explosions have been observed in recent years. One was first observed using a robotic telescope at Caltech's Palomar Observatory. Data collected with Palomar's Samuel Oschin Telescope was transmitted from the remote mountain site in southern California to astronomers via the NSF-funded High-Performance Wireless Research and Education Network (HPWREN). The Nearby Supernova Factory research group at the Lawrence Berkeley Laboratory reported the co-discovery of the supernova, known as SN2005gj. Researchers in Canada have analyzed this, along with two other supernovae, and believe that they each may be the signature of the explosive conversion of a neutron star into a quark star.

*Credit: NASA/CXC/M.Weiss*



Melting sea ice in the Arctic Ocean.

*Credit: J. Harbeck, University of Alaska, Fairbanks*

# Contents

<b>2008 AC/GPA Membership List</b> .....	i
<b>Executive Summary</b> .....	1
<b>Reports from AC/GPA Subgroups</b>	
Discovery Subgroup .....	6
Learning Subgroup .....	14
Research Infrastructure Subgroup .....	22
Committee of Visitor Reports (COV) Subgroup .....	27
<b>Appendices</b>	
<i>Appendix I</i> Charge for the FY2008 AC/GPA .....	30
<i>Appendix II</i> Process Overview .....	32
<i>Appendix III</i> 2008 Evaluation Criteria for Program Highlights .....	33
<i>Appendix IV</i> Committee of Visitor Reports .....	37
<i>Appendix V</i> NSF-funded Prize Winners .....	39
<i>Appendix VI</i> Photo Information and Credits .....	41

THIS PAGE INTENTIONALLY LEFT BLANK

## **Advisory Committee for GPRA Performance Assessment (AC/GPA) 2008 Membership List**

**David Spencer – Chair**

Chairman & Chief Technical Officer  
wTe Corporation  
Bedford, MA

**Sharon Dawes - Vice-Chair**

Senior Fellow, Center for Technology in  
Government  
University at Albany  
State University of New York  
Albany, NY

**Mary R. Albert**

Research Mechanical Engineer  
Terrestrial and Cryospheric Sciences  
Branch  
Army EDRC Cold Regions Research and  
Engineering Lab  
Hanover, NH

**Diran Apelian**

Howmet Professor of Mechanical  
Engineering  
and Director, Metal Processing Institute  
Worcester Polytechnic Institute  
Worcester, MA

**Elaine L. Craft**

Director, SC ATE Center of Excellence  
Florence-Darlington Technical College  
Florence, SC

**Julio C. de Paula**

Dean of the College of Arts & Sciences  
Lewis & Clark College  
Portland, OR

**Jorge L. Díaz-Herrera**

Dean, Golisano College of Computing and  
Information Sciences  
Rochester Institute of Technology  
Rochester, NY

**María Alicia López Freeman**

Executive Director, California Science Project  
University of California, Los Angeles  
Los Angeles, CA

**Robert Frodeman**

Chair, Department of Philosophy and  
Religion Studies  
University of North Texas  
Denton, TX

**Ira Harkavy**

Associate Vice President and Director  
Barbara and Edward Netter Center  
for Community Partnerships  
University of Pennsylvania  
Philadelphia, PA

**John K. Haynes**

David Packard Professor and Dean  
Division of Science and Mathematics  
Morehouse College  
Atlanta, GA

**George M. Hornberger**

Ernest H. Ern Professor of Environmental  
Sciences  
University of Virginia  
Charlottesville, VA

**Deanna Paniataaq Kingston**  
Associate Professor  
Department of Anthropology  
Oregon State University  
Corvallis, OR

**Robert L. Lichter**  
Principal, Merrimack Consultants, LLC  
Great Barrington, MA

**Alan Needleman**  
Florence Pirce Grant University Professor of  
Engineering  
Brown University  
Providence, RI

**Pamela O'Neil**  
Associate Provost  
Brown University  
Providence, RI

**Samuel M. Rankin, III**  
Associate Executive Director  
American Mathematical Society  
Washington, DC

**Mary Ellen Sheridan**  
Special Assistant to the Vice President  
for Research  
The University of Chicago  
Worthington, OH

**Joel E. Tohline**  
Professor of Physics and Astronomy  
Louisiana State University  
Baton Rouge, LA

**Gordon E. Uno**  
Academic Chair and David Ross Boyd  
Professor  
Department of Botany and Microbiology  
University of Oklahoma  
Norman, OK