

BUREAU OF THE CENSUS  
MANUFACTURING AND CONSTRUCTION DIVISION

MCD Working Paper Number:  
Census/MCD/WP-97/01

**EFFECTS OF CLASSIFICATION CHANGE IN THE  
ANNUAL SURVEY OF MANUFACTURES:  
A SNAPSHOT VIEW OF 1995**

By  
John H. Gates  
July 1997

This series contains a working paper, written by or in cooperation with staff members of the Manufacturing and Construction Division. The views reflected in this working paper are not necessarily those of the Census Bureau nor do they necessarily represent Census Bureau statistical policy or practice. Inquiries may be addressed to the author(s) or the MCD Working Paper Coordinator, Manufacturing and Construction Division, Bureau of the Census, Washington, DC 20233.

## Introduction<sup>1</sup>

Preparation for testing the collection of annual data on product shipments from companies included an analysis of the importance of industry classification changes in the Annual Survey of Manufactures (ASM). If annual data on product shipments were collected from companies, questions on shipments by product class (PC) would be removed from the ASM forms. One important use of the PC data now collected on the ASM form is that some establishments are allowed to be reclassified on the basis of this data.

Discussions of alternatives to using the PC data to reclassify ASM establishments ranged from the possibility of only reclassifying in census years to the extreme of continuing to collect partial PC data. There was no quantitative data on the importance of such reclassifications available to guide choices across this broad range. We decided to undertake a project to develop quantitative measures of the effects of establishment reclassification on the ASM estimates. We decided to treat "births" separately because they frequently appear in the survey with an initial classification which has not been verified by Bureau staff, and they are subject to different rules of reclassification.

To develop such measures, we used information relating to establishments in the 1995 ASM. The 1995 ASM sample was an updated form of the 1994 ASM sample which was based on information collected in the 1992 Census of Manufactures (CM). We considered "matched" establishments that were present in both the 1995 ASM and the 1992 CM, and "births" that were present in 1995 and not in 1992. For the matched establishments, we considered the change from 1992 to 1995 since our concern is with the cumulative effects of reclassification (or its absence) on the ASM results. For the birth establishments, we focused on the change from 1994 to 1995 since they are subject to different rules of reclassification during their first years in the survey.

The details of our review are presented below. Our conclusion is that reclassification of establishments in the ASM based on information collected each year appears to result in significant differences in the survey estimates. It seems reasonable to recommend that we develop alternative procedures for capturing these reclassification effects if PC data is no longer collected on the ASM. The conclusion is not stated more strongly because this is only a "snapshot" study using data for the 1995 ASM. A more conclusive result would require a multiyear data set which could consider the stability of these results over time.

---

<sup>1</sup> This paper summarizes the efforts of many people. Stacey Cole supervised the work of Cathy Ritenour without whose tabulations there would be no paper. Several of Stacey's staff contributed to the discussion of statistical tests and variance calculations. Ken Hansen provided assistance obtaining data files. Lori Guido produced the files and provided assistance navigating computer security systems so the files could be accessed.

## All Manufacturing

The 1992/95 matched group included 49,983 establishments and represented cases selected for the 1994 ASM sample that were still active in 1995. Many, perhaps half, were selected for the first time when the 1994 sample was drawn, while the other half were included in the 1989-93 sample. In general, for both cases, the 1992 CM industry code was based on product data reported in the CM. For cases that did not respond in the CM, their industry code was obtained from the Standard Statistical Establishment List (SSEL), or in some cases, from the 1991 ASM. [SSEL industry codes come from a variety of sources.]

The 1995/94 birth group included only 4,318 establishments and represented births and newly-classified adds to the 1994 ASM that were carried forward into the 1995 ASM. These 4,318 cases were not all of the births added to the ASM in 1994. We actually added about 12,000. To keep the ASM sample from becoming too large, we select a sample of births from year "1" to be mailed in year "2." The selected births then receive sample weights. For these births, the 1994 industry code was generally obtained from the SSEL. Only a portion of multiunit (MU) births are actually mailed an ASM form for the year in which they are born. All single-unit (SU) births are imputed the first year using Internal Revenue Service data. About 3,000 of the 4,318 were SU's.

Summary tabulations for all manufacturing showing counts and weighted value of shipments (VS) for these establishments are shown below.

### Change for Matched Establishments Between the 1995 ASM and 1992 CM

SIC	Count	Percent	Weighted VS (\$millions)	Percent
<u>Totals</u>	49,983	100.0	3,335,440	100.0
<u>Same or Different SIC4 in 1995 and 1992</u>				
Same	48,469	97.0	3,256,937	97.6
Diff	1,514	3.0	78,503	2.4

### Change for Birth Establishments Between the 1995 ASM and 1994 ASM

SIC	Count	Percent	Weighted VS (\$millions)	Percent
<u>Totals</u>	4,318	100.0	44,826	100.0
<u>Same or Different SIC4 in 1995 and 1994</u>				
Same	3,994	92.5	42,077	93.9
Diff	324	7.5	2,749	6.1

Since the ASM is a sample survey, the establishments referred to in this table represent themselves and other establishments when estimates are created. We see that establishments accounting for 2.4 percent of the shipments represented by the matched establishments were classified in a different industry in 1995 compared to 1992. Establishments accounting for 6.1 percent of the shipments represented by the birth establishments were classified in a different industry in 1995 compared to 1994.

To understand the importance of these classification changes, we need to 1) relate them to the estimate of value of shipments (VS) for all manufacturing, and 2) relate them to estimates of detailed industry VS produced from the ASM and examine their distribution across industries. The first item is fairly straightforward; the 1995 publication, "Statistics for Industry Groups and Industries," indicates that the ASM estimate of VS in 1995 by all manufacturing industries was \$3,589 billion. Then the \$78.5 billion of weighted VS by matched establishments with a classification change between 1992 and 1995, which was 2.4 percent of shipments represented by matched establishments, was 2.2 percent of the total shipments measured by the ASM. The 6.1 percent of shipments represented by birth establishments with a classification change in their first year in the ASM was less than 0.1 percent of total manufacturing VS for that year. The second item, relating the changes to detailed industry values, is discussed below.

### **Detailed Industries<sup>2</sup>**

We want to know if the establishments that were reclassified (matched and birth establishments) were spread uniformly across all industries or concentrated in a few industries. Further, we would like to know if the shipments represented by reclassified establishments are a large or small portion of the total shipments from the detailed industries in which the establishments are located. To answer these questions, we compared the change in industry VS due to reclassifications to total industry VS for detailed industries. We compared weighted shipments by reclassified matched establishments and by reclassified birth establishments separately.

In order to isolate the effects of reclassifications, we calculated "pseudo-1995 estimates." For example, to consider the effect of changes in the classifications of matched establishments, we calculated what the VS of each industry would have been in 1995 if the only difference was the change in the classifications of these establishments. These pseudo-1995 estimates would never have actually existed because there are many other changes that occur from year-to-year. But, the difference between the pseudo-1995 estimates and the 1995 published estimates is an accurate portrayal of the effect of reclassifying matched establishments. Similarly, for birth establishments, we calculated pseudo-1995 estimates as they would have occurred if these establishments had their 1994 classification but all else was exactly the same as in 1995.

---

<sup>2</sup> The industry codes and their titles are shown in the appendix.

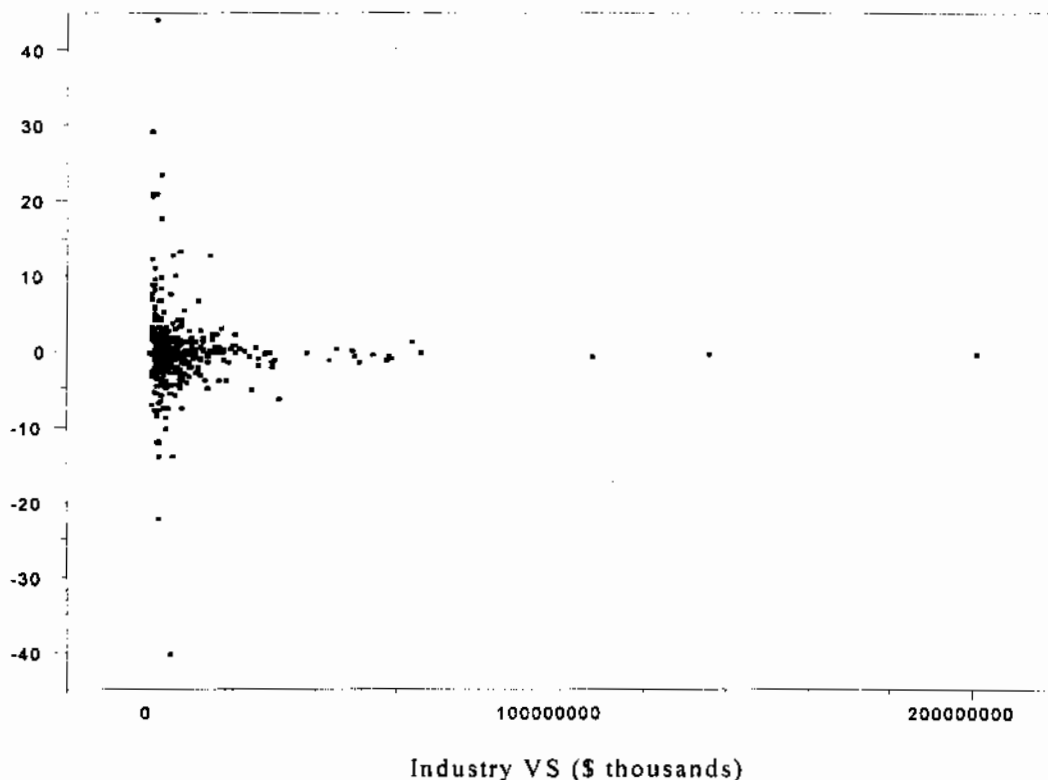
Reclassification and industry totals:

Table 1 presents detailed information on the effects of reclassification. It shows the total value of shipments from the industry for two-digit (SIC2's) and four-digit SIC's (SIC4's), the number of matched establishments in the industry based on 1992 and on 1995 classifications, the sum of the weighted shipments of those establishments, and the difference between the weighted shipments of birth establishments in the industry based on 1994 and on 1995 classifications. The information relating to birth establishments is limited to avoid disclosing confidential information.

We find from Table 1 that the reclassifications and their effects were not spread uniformly across industries. It is easier to see this with a graphical display. Chart 1 was created by plotting the percentage change that would occur in each SIC4, if 1992 classifications of matched establishments were used in place of actual 1995 classifications, against the 1995 estimate of VS for the industry.

Chart 1. Percent Change in Shipments by SIC4 if 1992 Classifications Used vs. Actual Shipments by SIC4: 1995

Percent Change if 1992 Classifications Used



The chart shows that many industries are clustered along the horizontal zero axis. These are industries for which reclassifications accounted for a small percentage of total industry VS in 1995. However, there are some industries for which the industry VS would have been more than 10 percent higher or lower if reclassifications had not occurred. We can quantify this discussion by very detailed review of Table 1 or, with less precision, by considering the table below.<sup>3</sup>

**Distribution of Percent Difference in SIC4 Industry Shipments Due to  
Reclassification of Matched Establishments: 1995 ASM**

Percent difference	44.3	12.1	1.2	0.0	-0.9	-7.8	-39.9
Percent of all industries with this value or less	100.0	97.5	75.0	50.0	25.0	2.5	0

This table shows the percent of all industries for which the percent difference in VS when 1992 classifications were used was less than the value shown. For example, 100.0 percent of establishments had a percent difference of 44.3 or less because that is the highest value observed. 50.0 percent had a percent difference of 0.0 or less.

The table shows that the percent difference in shipments due to reclassifications ranged from +44 percent to -40 percent. The chart shows that these two extreme points were set by two small industries. The median percentage was 0.0, 50 percent had a value of 0 or lower, so 50 percent had a value above 0.0. Some 2.5 percent of the industries had a percent difference due to reclassification greater than 12 percent, and another 2.5 percent had a difference less than -8 percent. Finally, 25 percent of establishments had a percentage greater than 1.2 and 25 percent had a percentage of -0.9 or less.

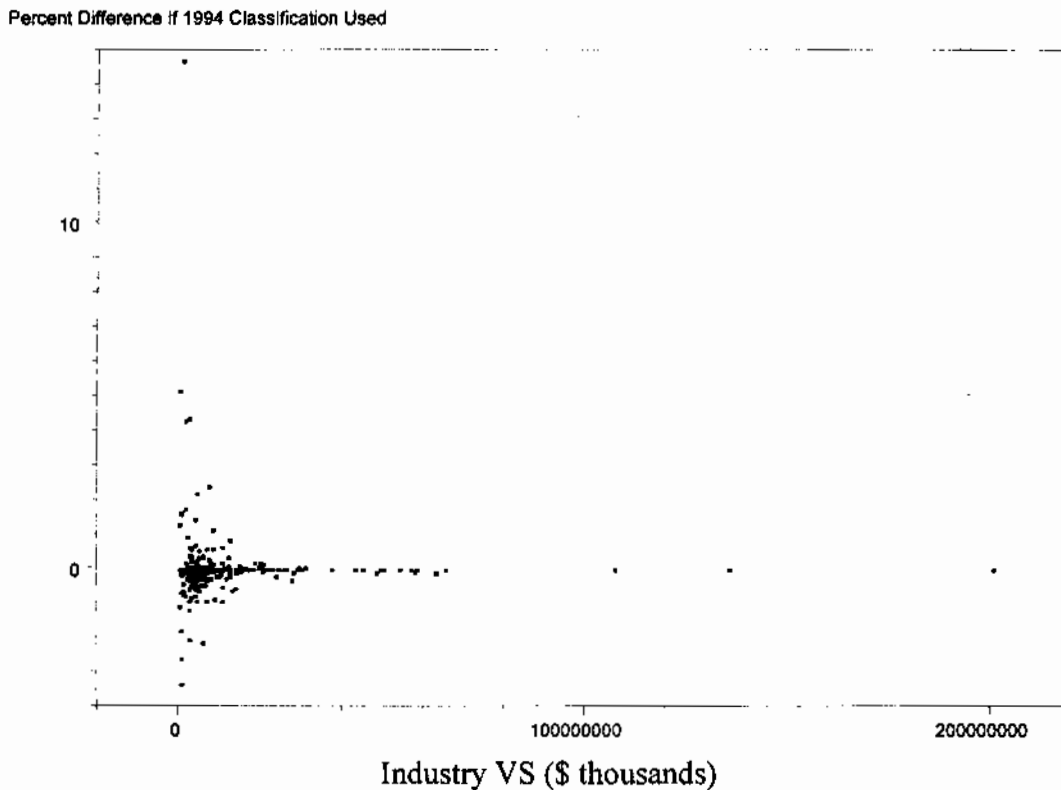
We can interpret these data as follows. If the limited reclassifications that occur during ASM processing had not occurred, the median change in an SIC4 industry's total VS would have been 0. However, approximately 5 percent of all industries would have had a VS 10 percent different from the observed value, and approximately 50 percent of all industries would have had a total VS that is at least 1 percent different from the published estimate. The differences in detailed industry VS would have been widespread, symmetrically distributed about 0, and largest in small industries. That is the situation depicted in Chart 1.

A different picture emerges for the birth establishments. Since there was no 1992 classification of these establishments, we compared their 1995 classification to the one

<sup>3</sup> We could use absolute percent differences in this analysis and probably would have if we were limited to summary statistics for our discussions. With modern computer software, we can expand the discussion to include graphical displays that allow us to observe both the magnitude and the sign of the percentages without undue difficulty so the standard percentages will be used.

assigned when they first entered the sample during 1994 processing. We calculated the difference in the value of shipments from each industry in 1995 that would have occurred if the birth establishments were tabulated with their 1994 classifications instead of their 1995 classifications. We then calculated the percentage that each of these differences was of the actual 1995 ASM estimate of shipments. Chart 2 shows these percentages plotted against the 1995 estimate of VS for each SIC4.

Chart 2. Percent Change in Shipments by SIC4 if 1994 Classifications of Birth Establishments Used vs. Actual Shipments by SIC4: 1995



This chart looks like Chart 1 with two important exceptions. One, there is a single industry with a large percentage value that pushes up the maximum value on the vertical axis. Two, the scale of the vertical axis is much smaller. Chart 1's vertical axis ranged from +45 to -45 while Chart 2's covers only +15 to -4. Without the single large percentage, the range would be +6 to -4. Thus, the percentages of industry VS related to birth reclassifications were much smaller than those related to matched establishment reclassifications. And, ignoring the +15 outlier, they were fairly symmetric around 0.

The table below shows that, as with the matched establishments, the extremes of the range of the percentages were set by two small industries. The median was again 0.0.

Approximately 5 percent of all industries had a percentage greater than 1.5 or less than -1. For more than 50 percent of all industries, any reclassification effect did not appear when rounding to the first decimal.

**Distribution of Percent Difference in SIC4 Industry Shipments Due to  
Reclassification of Birth Establishments: 1995 ASM**

Percent difference	14.7	1.6	0.0	0.0	-0.0	-0.9	-3.3
Percent of all industries with this value or less	100.0	97.5	75.0	50.0	25.0	2.5	0

Still, there were industries in which the reclassification of births caused a 1 percent or more difference in total industry VS. This is remarkable, given the small number of birth establishments and their small total weighted shipments (\$44.8 billion) relative to total manufacturing shipments (\$3,589 billion). More surprising, were a few industries in which the reclassification of births caused a change of more than 2.5 percent in total industry VS.

A more detailed view of the industries where reclassification had the largest impact in 1995 is shown in Tables 2 and 3. Both tables contain the same variables (columns) as Table 1 but contain information only for SIC4 industries. Table 2 is sorted in descending order by the absolute value of the percent of total industry VS accounted for by reclassification of matched establishments and contains the 100 industries with the largest absolute value of this percentage. Table 3 is sorted in descending order by the absolute value of the percent of total industry VS accounted for by reclassification of birth establishments and contains the 50 industries with the largest absolute value of this percentage.

The size and distribution of reclassification effects at the 2-digit industry level are shown in Charts 3 and 4, and in Table 4. Charts 3 and 4 are similar to Charts 1 and 2. Both have the value of total industry shipments on the horizontal axis. Chart 3 has the percent difference in industry shipments due to reclassification of matched establishments on the vertical axis. Chart 4 has the percent difference due to reclassification of birth establishments on that axis. Both Charts 3 and 4 show the data for SIC2 industries 20 through 39. Table 4 contains the variables (columns) from Table 1 but is limited to SIC2 industries.



Chart 3. Percent Change in Shipments by SIC2 if 1992 Classifications Used vs. Actual Shipments by SIC2: 1995

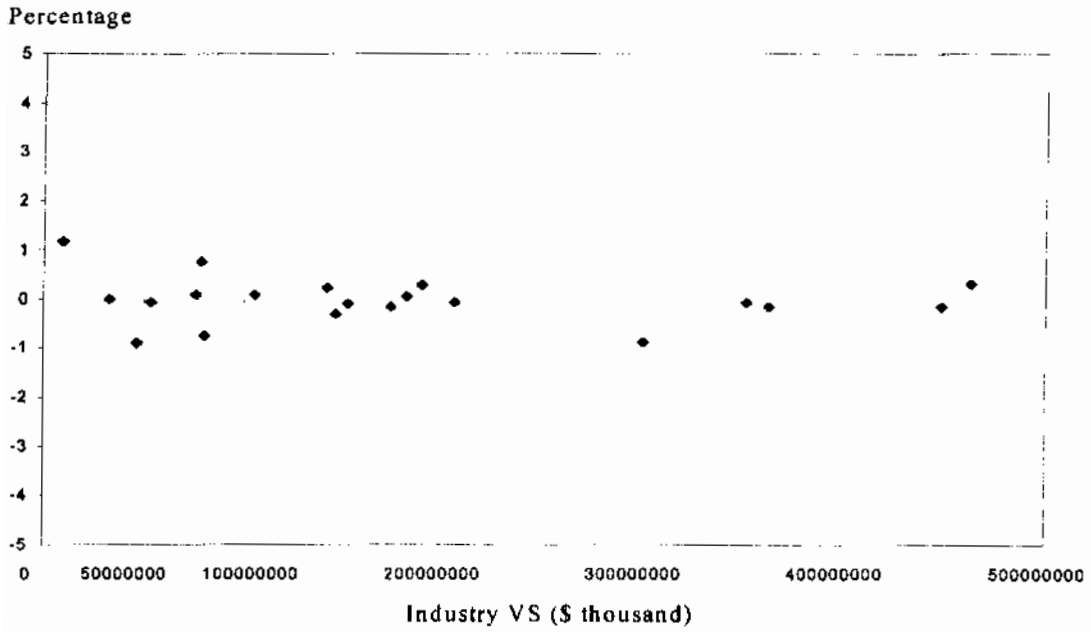
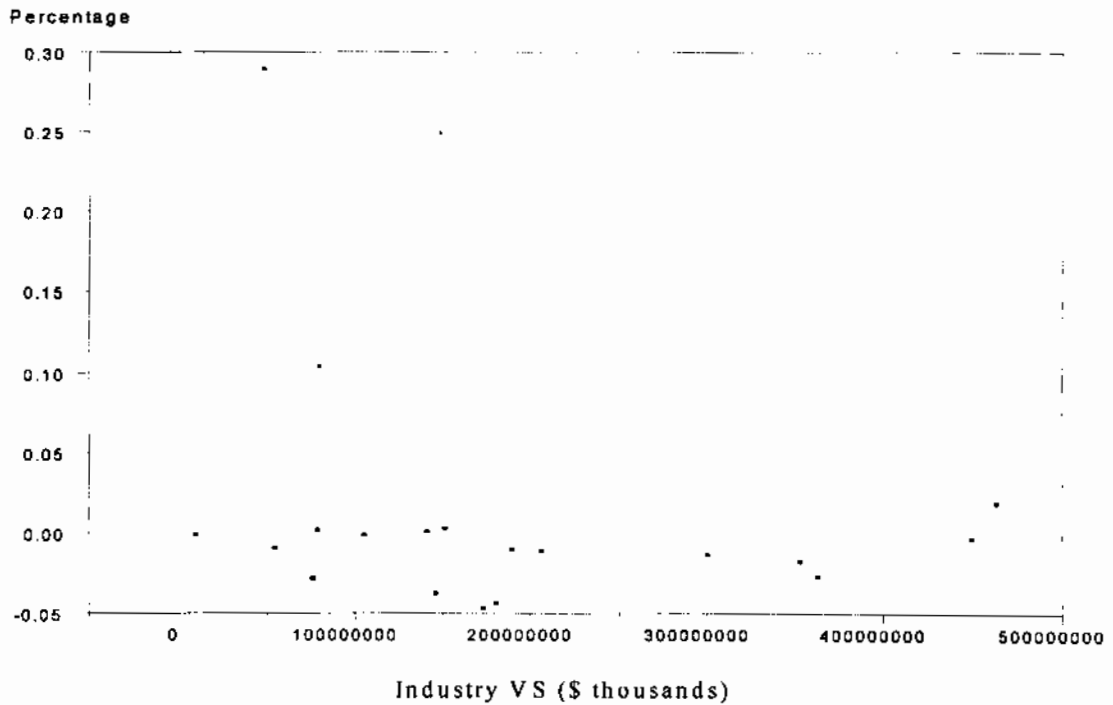


Chart 4. Percent Change in Shipments by SIC2 if 1994 Classifications of Birth Establishments Used vs. Actual Shipments by SIC2: 1995



At this level of aggregation, the largest effects canceled each other out. Industry 31 is the only SIC2 industry for which reclassification of matched establishments had an effect of more than 1 percent of total industry VS (see table 4). There is one SIC2 industry for which the effect rounds to 1 percent (23) and three industries for which the effect rounds to -1 percent (39, 36, and 22). All other SIC2 industries had effects of reclassification of matched establishments of less than 0.5 percent in absolute value. The only two SIC2 industries where the effect of reclassifying birth establishments accounted for more than 0.1 percent in absolute value are 39 (0.3%) and 22 (0.1%).

#### Accounting for random effects:

Up to this point, we have not taken the random portion of the estimates into account. The estimates of VS arising from the ASM and the weighted sum of shipments from birth establishments with various classifications in effect have random components because they are sample based estimates. When we observe that these values would be different if a reclassification had not occurred, we can consider that the difference may be no more than might reasonably be expected to occur if we drew a new sample with the old classifications and calculated new estimates of shipments. That is, we might be considering a difference that is no larger than that which could occur as a result of random variation among samples drawn from the same population. To distinguish differences that are larger than those that could be expected due to random variation, we calculated a "z- statistic."<sup>4</sup> We could then identify and consider differences larger than those expected from random variation with probability 0.9 by looking for values of the z- statistic greater than 1.64 in absolute value.

Since matched establishments are allowed to be reclassified only when they are among those sampled with certainty, their classification does not affect the variance of the SIC4 industry estimates. The z-statistic for considering differences in shipments from an industry due to reclassification of matched establishments is:

$$z = \frac{V_{1995} - V_{1992}^{calc}}{\sqrt{2\sigma_{1995}^2}}$$

where  $V_{1995}$  is the value of industry VS in 1995,  $V_{1992}^{calc}$  is the calculated value of VS in 1995 if 1992 classifications were assigned to the matched establishments, and  $\sigma_{1995}^2$  is the variance of  $V_{1995}$ .

The birth establishments are sample establishments. They introduce random variation in the industry where they are classified. When we reclassify one of them there is a change

---

<sup>4</sup> The formulas for these statistics were worked out by the staff of the Manufacturing Programs Methodology Branch. A detailed derivation is beyond the scope of this document. Those wishing to pursue the derivations further can contact the Methodology Branch at (301) 457-4771.

in the variance of the industry it exits, a change in the variance of the industry it enters, and a covariance effect that all need to be considered. The z-statistic for differences in shipments from an industry due to reclassification of birth establishments is:

$$z = \frac{V_{1995} - V_{1994}^{calc2}}{\sqrt{(\sigma_{1995}^2 + \sigma_{1994}^2 - 2Cov(1994,1995))}}$$

where  $V_{1995}$  is the value of industry VS in 1995,  $V_{1994}^{calc2}$  is the calculated value of VS in 1995 if the birth establishments had not been reclassified,  $\sigma_{1995}^2$  is the variance of  $V_{1995}$ ,  $\sigma_{1994}^2$  is the variance of  $V_{1994}^{calc2}$ , and  $Cov(1994,1995)$  is the covariance term.

Both of these statistics were calculated for each of the SIC4 industries. Table 5 presents the industries for which the z-statistic for matched establishments exceeded 1.64 in absolute value. Table 6 presents the industries for which the z-statistic for birth establishments exceeded 1.64 in absolute value.

Chart 5 shows the difference in 1995 industry VS due to reclassification of matched establishments for the industries shown in Table 5. Each of these differences were larger than what was expected to occur due to random variation between samples. Note that there were only 43 such industries. This is many less than the 50 percent of all industries for which the reclassification of matched establishments caused a 1 percent or larger difference in industry VS. The absolute value of the changes ranged from \$1.9 billion to \$11.8 million.

Chart 5. Difference in 1995 VS by SIC4 Due to Reclassification of Matched Establishments from 1992 to 1995: Where Difference is Statistically Significant

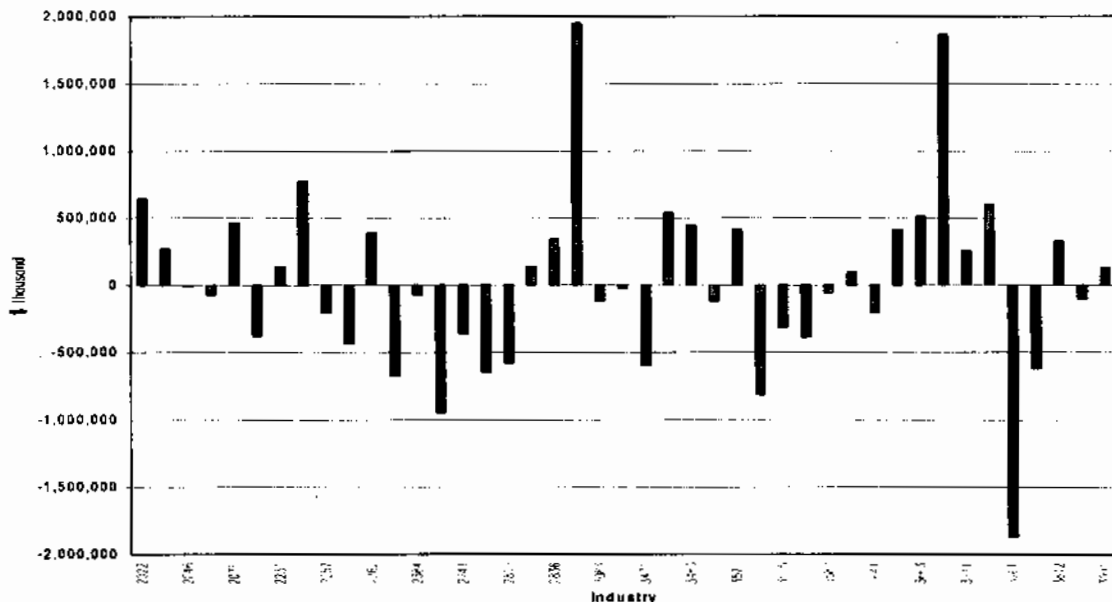
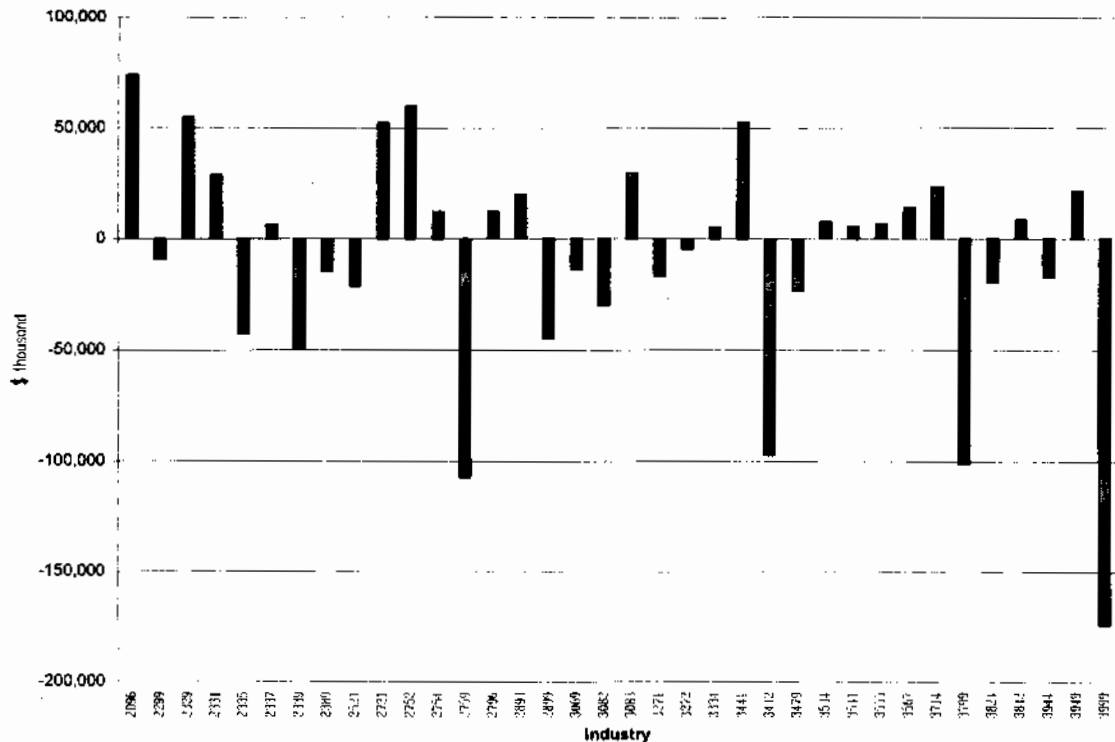


Chart 6 shows the differences in industry VS due to reclassification of birth establishments in the industries where this difference was larger than would be expected due to random variation among samples (Table 6). There were 36 such industries with differences that ranged in absolute value from \$174.1 million to \$4.4 million. Smaller values of differences were significant when reclassification of birth establishments was considered compared to those due to reclassification of matched establishments. This was because the covariance term which was subtracted in the denominator of the z-statistic resulted in a larger statistic for the same value of dollar difference. There is no covariance term in the denominator of the z-statistic for matched establishments because 1992 was a Census year and hence not subject to sampling variation.

Chart 6. Difference in 1995 VS by SIC4 Due to Reclassification of Birth Establishments from 1994 to 1995: Where Difference is Statistically Significant



**Conclusions:**

We found that reclassification of matched establishments accounted for a difference in total industry VS of 1 percent or more in 50 percent of the SIC4 industries. The difference in industry VS due to reclassification of matched establishments was larger than could be expected due to random variation between samples in 43 industries. Approximately 5 percent of all industries had a difference due to reclassification of birth establishments of greater than 1.5 or less than -1 percent. The difference in industry VS due to reclassification of birth establishments was larger than could be expected due to random variation between samples in 36 industries.

This analysis is based on the assumption that the effects of reclassification are consistent enough to be cumulative over multiple periods. Confirming that reclassification effects are consistent and cumulative across periods would require a multi-period data set. With the data set available, it seems reasonable to conclude only that the reclassification of establishments in the ASM has a significant impact on the survey results. Removal of PC data from the ASM form should probably be followed up by the implementation of an alternative mechanism to allow reclassification of establishments whose activities change enough from year-to-year to warrant such reclassification. We have not developed an alternative mechanism and have delayed discussion of that problem until the results of testing the collection of annual data on product shipments from companies are available.

Table 1. Counts and Weighted Shipments of Establishments By Industry Using Classifications in Selected Years

Industry	ASM estimate of 1995 industry VS (\$,000)	Data for 1994 Adds		Data for establishments that matched in '95 and '92					
		Difference between sums with 94 and with '95 classifications		Count of estab's -- '92 classifications	Count of estab's -- '95 classifications	Weighted sum of '95 shipments with '92 class (\$,000)	Weighted sum of '95 shipments with '95 class (\$,000)	Difference between sums with 92 and with '95 classifications	
		(\$,000)	as percent of industry VS					(\$,000)	As percent of industry VS
20	448,405,500	-8,227	0.00	5,144	5,158	426,576,088	427,333,271	-757,183	-0.17
2011	50,687,500	0	0.00	260	260	48,756,045	49,253,507	-497,461	-0.98
2013	20,685,400	0	0.00	309	306	20,455,649	19,900,229	555,420	2.69
2015	28,886,700	0	0.00	302	303	28,186,570	28,143,009	43,561	0.15
2021	947,000	0	0.00	10	8	747,492	691,430	56,062	5.92
2022	18,373,800	0	0.00	200	203	17,455,085	18,095,549	-640,464	-3.49
2023	7,220,200	-4,899	-0.07	74	73	7,086,823	6,985,506	101,317	1.40
2024	6,059,700	0	0.00	72	71	6,956,238	7,003,313	-47,076	-0.78
2026	22,865,200	4,999	0.02	294	293	21,706,072	21,616,699	89,373	0.39
2032	7,643,700	0	0.00	63	64	7,419,333	7,689,667	-270,334	-3.54
2033	14,711,800	-8,339	-0.04	177	174	13,573,193	13,224,989	348,204	2.37
2034	2,942,100	-4,622	-0.18	51	55	2,739,403	2,787,340	-47,937	-1.63
2035	7,753,400	10,961	0.14	90	90	8,383,855	8,022,897	360,958	4.66
2037	9,035,100	-4,111	-0.05	110	108	8,747,440	8,613,737	133,703	1.48
2038	8,262,700	0	0.00	105	109	8,606,443	8,621,014	-14,571	-0.16
2041	7,323,000	0	0.00	139	138	6,717,557	6,593,884	133,673	1.83
2043	12,605,800	-9,721	-0.08	31	31	12,270,158	12,209,596	60,562	0.48
2044	1,890,400	0	0.00	14	14	2,108,794	2,108,794	0	0.00
2045	4,790,800	0	0.00	81	82	4,461,192	4,364,705	96,487	2.01
2046	8,532,500	0	0.00	33	32	7,944,331	7,932,628	11,805	0.14
2047	7,253,000	0	0.00	63	63	7,157,325	7,157,325	0	0.00
2048	16,159,800	8,743	0.05	549	543	14,522,363	14,493,684	28,679	0.18
2051	19,640,000	13,554	0.07	443	441	18,319,521	18,210,329	109,192	0.56
2052	10,500,000	68,784	0.66	119	118	10,097,974	10,155,280	-57,306	-0.55
2053	2,444,800	-6,879	-0.28	41	41	2,541,825	2,510,051	31,774	1.30
2061	1,586,800	0	0.00	13	13	1,640,805	1,640,805	0	0.00
2062	2,582,200	0	0.00	11	11	3,162,810	3,162,810	0	0.00
2063	2,787,700	0	0.00	33	33	3,071,773	3,071,773	0	0.00
2064	11,340,900	0	0.00	146	149	11,105,164	11,303,295	-198,131	-1.75
2066	3,302,300	0	0.00	19	18	3,219,686	3,147,009	72,677	2.20
2068	3,390,500	0	0.00	28	29	3,526,061	3,527,550	-1,489	-0.04
2074	835,700	0	0.00	15	15	713,973	713,973	0	0.00
2075	13,275,500	0	0.00	75	76	12,364,008	12,826,844	-462,836	-3.49
2076	721,700	0	0.00	9	9	437,296	437,296	0	0.00
2077	2,033,600	978	0.05	58	61	1,270,575	1,338,060	-67,485	-3.32
2079	4,671,800	0	0.00	43	43	5,080,287	4,702,561	377,726	8.09
2082	17,150,800	0	0.00	58	58	16,568,443	16,568,443	0	0.00
2083	676,300	0	0.00	14	14	832,068	832,068	0	0.00
2084	4,742,700	-4,242	-0.09	52	52	4,212,071	4,212,071	0	0.00
2085	3,826,900	0	0.00	30	31	3,781,849	3,851,221	-69,372	-1.81
2086	30,203,300	-3,985	-0.01	259	259	28,407,738	28,637,290	-229,552	-0.76
2087	7,814,900	0	0.00	79	77	7,459,619	7,470,265	-10,646	-0.14
2091	830,500	0	0.00	26	26	822,432	822,432	0	0.00
2092	6,872,100	0	0.00	121	122	6,093,135	6,105,468	-12,333	-0.18
2095	6,418,100	0	0.00	47	46	5,848,460	5,749,678	98,782	1.54
2096	8,748,900	-73,849	-0.84	82	82	8,506,044	8,474,891	31,153	0.36
2097	417,500	0	0.00	19	19	82,730	82,892	-162	-0.04
2098	1,936,500	0	0.00	21	24	1,020,328	1,244,767	-224,439	-11.59
2099	14,024,500	2,501	0.02	257	271	10,388,250	11,034,947	-646,697	-4.61
21	32,983,800	0	0.00	37	37	32,206,620	32,206,620	0	0.00
2111	27,608,900	0	0.00	9	9	27,606,815	27,606,815	0	0.00
2121	390,900	0	0.00	3	3	261,051	261,051	0	0.00
2131	1,974,500	0	0.00	6	6	1,546,156	1,546,156	0	0.00
2141	3,009,500	0	0.00	19	19	2,792,598	2,792,598	0	0.00
22	79,742,300	83,975	0.11	1,426	1,433	73,850,245	74,459,092	-608,847	-0.76
2211	6,674,800	0	0.00	87	83	6,655,159	6,549,765	105,394	1.58
2221	9,838,200	0	0.00	172	174	9,546,366	9,506,714	39,652	0.40
2231	1,835,900	0	0.00	20	21	1,425,386	1,563,689	-138,303	-7.53
2241	1,542,800	0	0.00	41	43	1,450,841	1,488,685	-37,844	-2.45
2251	1,568,100	0	0.00	34	33	1,406,527	1,386,639	19,888	1.27
2252	2,856,700	0	0.00	69	70	2,147,329	2,172,518	-25,189	-0.88
2253	5,675,200	-118,637	-2.09	96	99	4,252,694	5,027,286	-774,592	-13.65
2254	972,100	0	0.00	18	21	1,051,391	999,585	51,796	5.33

Table 1. Counts and Weighted Shipments of Establishments By Industry Using Classifications in Selected Years

Industry	ASM estimate of 1995 industry VS (\$,000)	Data for 1994 Adds			Data for establishments that matched in '95 and '92					
		Difference between sums with '94 and with '95 classifications (\$,000)	as percent of industry VS	Count of estab's -- '92 classifications	Count of estab's -- '95 classifications	Weighted sum of '95 shipments with '92 class (\$,000)	Weighted sum of '95 shipments with '95 class (\$,000)	Difference between sums with '92 and with '95 classifications		
								(\$,000)	As percent of industry VS	
2257	5,227,000	0	0.00	124	121	5,269,614	5,062,258	207,356	3.97	
2258	2,608,500	114,136	4.38	62	61	2,071,767	2,180,698	-108,931	-4.18	
2259	308,100	0	0.00	4	4	138,736	138,736	0	0.00	
2261	2,427,000	0	0.00	50	51	2,778,999	2,344,685	434,314	17.90	
2262	3,909,800	0	0.00	79	79	3,499,881	3,888,215	-388,334	-9.93	
2269	1,115,300	0	0.00	20	20	1,151,541	1,151,541	0	0.00	
2273	10,731,900	0	0.00	123	126	10,342,119	10,322,865	19,254	0.18	
2281	8,473,700	0	0.00	217	219	8,064,875	8,183,044	-118,169	-1.39	
2282	3,384,000	0	0.00	48	48	3,453,295	3,437,307	15,988	0.47	
2284	918,400	0	0.00	12	11	676,641	660,541	16,100	1.75	
2295	1,827,900	79,126	4.33	22	22	1,707,776	1,707,776	0	0.00	
2296	1,056,200	0	0.00	9	9	809,066	809,066	0	0.00	
2297	3,606,600	0	0.00	40	40	3,227,984	3,186,872	61,122	1.69	
2298	817,400	0	0.00	27	27	625,478	625,478	0	0.00	
2299	2,366,700	9,351	0.40	52	51	2,096,769	2,085,119	11,651	0.49	
23	78,096,900	2,987	0.00	2,237	2,240	69,063,616	68,480,196	583,420	0.75	
2311	2,078,400	-5,325	-0.26	60	61	1,728,375	1,735,173	-6,798	-0.33	
2321	5,200,600	0	0.00	175	174	5,639,962	4,963,103	676,859	13.02	
2322	717,900	-4,800	-0.67	26	25	670,029	610,025	60,004	8.36	
2323	665,600	0	0.00	10	10	492,643	492,643	0	0.00	
2325	7,494,100	0	0.00	158	154	7,119,355	7,018,758	100,597	1.34	
2326	1,863,200	-1,732	-0.09	58	58	1,629,454	1,648,978	-19,524	-1.05	
2329	2,756,300	-55,014	-2.00	125	131	2,476,735	2,540,992	-64,257	-2.33	
2331	3,770,900	-28,925	-0.77	126	133	2,912,548	3,227,897	-315,349	-8.36	
2335	6,983,000	42,805	0.61	273	272	5,083,808	5,351,941	-268,333	-4.13	
2337	3,703,600	-8,756	-0.18	129	130	3,399,350	3,313,761	85,589	2.31	
2339	8,410,900	49,343	0.59	270	259	7,506,920	7,031,254	475,666	5.66	
2341	2,493,800	0	0.00	77	74	2,776,151	2,522,988	253,165	10.15	
2342	2,083,300	0	0.00	26	29	1,858,774	2,107,823	-249,049	-11.95	
2353	1,042,600	-1,065	-0.10	36	38	697,621	748,701	-51,080	-4.90	
2361	1,631,300	0	0.00	51	50	1,201,184	1,334,187	-133,003	-8.15	
2369	2,048,000	0	0.00	55	61	1,648,403	1,926,918	-278,515	-13.60	
2371	101,300	0	0.00	5	5	62,364	62,364	0	0.00	
2381	410,000	0	0.00	8	9	429,045	438,952	-9,907	-2.42	
2384	252,400	0	0.00	7	5	178,475	103,908	74,567	29.54	
2385	183,000	0	0.00	6	4	165,529	151,029	14,600	7.98	
2386	205,600	0	0.00	4	4	39,444	39,444	0	0.00	
2387	742,300	0	0.00	14	14	486,967	486,967	0	0.00	
2389	893,900	14,436	1.61	32	33	892,605	695,696	196,909	22.06	
2391	1,333,300	0	0.00	31	32	1,664,872	1,722,246	-57,374	-4.30	
2392	6,292,300	-15,336	-0.24	110	107	5,817,341	5,538,694	280,647	4.46	
2393	917,400	15,336	1.67	33	33	604,922	604,922	0	0.00	
2394	1,320,900	-7,714	-0.58	48	48	885,459	885,459	0	0.00	
2395	718,500	-785	-0.11	31	30	598,466	527,486	70,980	9.88	
2396	7,283,100	-2,631	-0.04	179	184	6,676,656	6,702,813	-26,157	-0.36	
2397	268,900	0	0.00	7	7	227,799	227,799	0	0.00	
2399	4,230,500	11,151	0.26	67	66	3,712,462	3,719,279	-6,817	-0.16	
24	104,923,300	0	0.00	3,721	3,720	88,603,820	88,534,696	69,125	0.07	
2411	16,775,500	0	0.00	1,014	1,013	11,005,460	10,972,579	32,881	0.20	
2421	25,796,300	0	0.00	781	778	23,971,855	23,776,607	195,247	0.76	
2426	2,919,800	0	0.00	84	84	2,519,783	2,519,783	0	0.00	
2429	153,500	0	0.00	16	15	142,743	138,148	4,595	2.99	
2431	11,141,700	0	0.00	292	292	9,388,214	9,422,656	-34,442	-0.31	
2434	6,429,300	0	0.00	272	273	5,419,961	5,421,719	-1,758	-0.03	
2435	2,646,600	0	0.00	42	43	2,161,553	2,165,239	-3,686	-0.14	
2436	6,887,000	0	0.00	95	98	6,807,961	6,789,663	18,298	0.23	
2439	4,225,200	0	0.00	90	91	3,755,494	3,757,735	-2,241	-0.05	
2441	483,400	0	0.00	24	26	314,520	328,270	-13,750	-2.84	
2448	3,070,900	0	0.00	435	432	2,444,357	2,363,395	80,962	2.64	
2449	402,600	0	0.00	16	16	488,795	488,795	0	0.00	
2451	8,020,100	0	0.00	101	102	6,344,941	6,377,645	-32,704	-0.41	
2452	2,668,900	0	0.00	89	88	2,527,196	2,494,492	32,704	1.23	
2491	3,648,900	0	0.00	80	80	3,135,609	3,150,933	-15,324	-0.42	

Table 1. Counts and Weighted Shipments of Establishments By Industry Using Classifications In Selected Years

Industry	Data for 1994 Adds				Data for establishments that matched in '95 and '92				
	ASM estimate of 1995 industry VS (\$,000)	Difference between sums with 94 and with '95 classifications		Count of estab's -- '92 classifications	Count of estab's -- '95 classifications	Weighted sum of '95 shipments with '92 class (\$,000)	Weighted sum of '95 shipments with '95 class (\$,000)	Difference between sums with 92 and with '95 classifications	
		(\$,000)	(\$,000)	as percent of industry VS					(\$,000)
2493	5,195,600	0	0.00	113	113	4,570,035	4,570,035	0	0.00
2499	4,460,000	0	0.00	177	176	3,805,345	3,797,002	8,343	0.19
25	53,571,400	-4,338	-0.01	1,113	1,117	45,997,966	46,037,969	-40,003	-0.07
2511	10,235,900	-6,284	-0.06	244	240	8,750,347	8,594,207	156,140	1.53
2512	7,921,800	14,278	0.18	150	153	6,529,930	6,616,240	-86,310	-1.09
2514	2,007,400	678	0.03	57	55	1,718,398	1,692,282	26,118	1.30
2515	3,477,200	0	0.00	79	78	2,821,876	2,813,350	8,526	0.25
2517	466,200	-678	-0.15	8	8	380,228	394,100	-13,872	-2.98
2519	504,700	-16,870	-3.34	8	8	326,496	326,496	0	0.00
2521	2,182,600	21,179	0.97	103	104	1,916,866	1,919,894	-3,027	-0.14
2522	6,760,800	-17,877	-0.26	93	90	6,802,657	6,665,852	136,805	2.02
2531	6,808,000	2,350	0.04	88	89	6,132,275	6,174,628	-42,353	-0.64
2541	3,827,700	-3,933	-0.10	102	104	2,989,388	3,009,285	-19,897	-0.52
2542	4,256,500	0	0.00	67	71	3,311,381	3,321,840	-10,459	-0.25
2591	2,229,200	0	0.00	43	41	1,926,068	1,691,795	34,273	1.54
2599	3,093,400	2,819	0.09	73	78	2,392,055	2,617,999	-225,944	-7.30
26	172,638,000	-78,255	-0.05	1,900	1,906	163,367,519	163,625,634	-258,115	-0.15
2611	6,924,000	0	0.00	27	26	7,604,627	6,657,879	946,748	13.67
2621	45,121,100	0	0.00	192	190	46,384,015	46,146,977	237,038	0.53
2631	24,528,300	0	0.00	129	131	22,646,822	23,807,697	-1,160,875	-4.73
2652	577,100	0	0.00	4	4	907,118	907,118	0	0.00
2653	27,521,400	-78,255	-0.28	519	519	24,442,964	24,452,174	-9,210	-0.03
2655	2,125,400	0	0.00	111	110	1,617,881	1,596,670	20,991	0.99
2656	2,649,700	0	0.00	50	46	2,716,412	2,589,229	127,183	4.80
2657	8,795,800	0	0.00	148	154	7,784,704	7,890,541	-105,837	-1.20
2671	4,181,800	61,616	1.47	65	63	4,405,743	4,275,646	130,097	3.11
2672	9,332,700	0	0.00	149	149	8,499,947	8,655,475	-165,528	-1.77
2673	6,913,700	-61,616	-0.89	118	121	6,425,494	6,449,278	-23,784	-0.34
2674	3,074,000	0	0.00	64	62	2,433,217	2,400,485	32,732	1.06
2675	2,504,100	0	0.00	39	40	1,554,208	1,595,201	-40,993	-1.64
2676	17,831,100	0	0.00	78	81	17,407,627	17,554,597	-146,970	-0.82
2677	3,235,800	0	0.00	52	52	2,448,045	2,448,045	0	0.00
2678	1,557,600	0	0.00	27	27	1,600,718	1,600,718	0	0.00
2679	5,754,400	0	0.00	128	131	4,498,197	4,597,904	-99,707	-1.73
27	198,438,800	-16,486	-0.01	4,362	4,351	164,335,636	163,822,227	513,409	0.27
2711	37,731,900	-1,037	0.00	908	910	36,814,348	36,774,850	39,398	0.10
2721	23,904,900	-52,630	-0.22	320	326	21,108,247	21,181,159	-72,911	-0.31
2731	20,803,600	29,270	0.14	192	195	16,729,174	16,717,406	11,768	0.06
2732	5,425,100	-994	-0.02	90	90	4,921,661	4,695,744	225,917	4.16
2741	11,992,100	4,144	0.03	225	217	9,561,778	9,197,550	364,228	3.04
2752	48,773,800	-59,903	-0.12	1,570	1,558	41,128,323	40,889,629	238,694	0.49
2754	3,990,200	-12,262	-0.31	48	52	3,702,238	3,878,729	-176,491	-4.42
2759	12,329,100	107,221	0.87	498	495	9,775,360	9,673,439	101,921	0.83
2761	7,911,200	-19,880	-0.25	120	122	7,115,778	7,117,585	-1,807	-0.02
2771	4,726,400	0	0.00	24	24	4,497,081	4,497,081	0	0.00
2782	4,538,600	0	0.00	156	161	3,922,809	4,249,573	-326,764	-7.20
2789	1,512,200	-1,669	-0.11	64	63	1,048,436	1,014,517	33,919	2.24
2791	1,632,200	3,664	0.22	30	29	1,165,109	1,155,250	9,859	0.60
2796	3,367,500	-12,411	-0.37	117	109	2,845,295	2,779,616	65,679	1.95
28	362,128,500	-92,479	-0.03	3,288	3,293	338,978,640	339,537,554	-558,914	-0.15
2812	2,729,600	0	0.00	20	18	2,988,541	2,317,500	651,041	23.85
2813	3,805,700	0	0.00	333	338	3,107,124	3,156,674	-49,550	-1.37
2816	3,213,400	0	0.00	32	33	2,795,515	2,771,823	23,692	0.74
2819	17,173,600	0	0.00	280	288	18,147,407	17,567,173	580,234	3.38
2821	43,528,700	0	0.00	260	273	38,649,273	39,044,057	-394,784	-0.91
2822	5,942,200	0	0.00	34	36	5,409,409	5,545,986	-136,577	-2.30
2823	1,222,100	0	0.00	7	8	1,214,949	1,214,689	260	0.02
2824	12,813,300	-75,807	-0.59	49	49	12,492,817	12,405,415	87,402	0.68
2833	7,037,900	0	0.00	46	48	6,752,834	6,890,872	-138,238	-1.96
2834	57,943,300	-30,445	-0.05	213	219	53,580,360	53,823,498	-243,138	-0.42
2835	9,676,400	0	0.00	52	60	7,855,495	8,043,312	-187,817	-1.94
2836	6,226,600	0	0.00	68	68	5,771,392	6,111,682	-340,290	-5.47
2841	16,131,800	0	0.00	102	98	16,144,987	15,732,842	412,145	2.55



Table 1. Counts and Weighted Shipments of Establishments By Industry Using Classifications In Selected Years									
Industry	ASM estimate of 1995 industry VS (\$,000)	Data for 1994 Adds		Data for establishments that matched in '95 and '92					
		Difference between sums with 94 and with '95 classifications		Count of estab's -- '92	Count of estab's -- '95	Weighted sum of '95 shipments	Weighted sum of '95 shipments	Difference between sums with 92 and with '95 classifications	
		(\$,000)	as percent of industry VS	classifications	classifications	with '92 class (\$,000)	with '95 class (\$,000)	(\$,000)	As percent of industry VS
2842	8,700,300	0	0.00	103	110	8,101,196	8,427,498	-326,302	-3.75
2843	4,886,600	0	0.00	50	52	2,541,036	4,492,679	-1,951,643	-39.94
2844	20,438,900	30,445	0.15	155	152	20,039,219	19,798,794	240,425	1.18
2851	17,942,600	3,012	0.02	284	282	17,480,564	17,404,310	76,254	0.42
2881	816,900	0	0.00	31	31	826,350	810,528	15,822	1.94
2885	12,419,000	0	0.00	72	74	11,757,555	11,567,584	189,971	1.53
2889	83,303,100	-62,137	-0.10	311	318	61,420,051	60,375,686	1,044,365	1.65
2873	4,445,900	33,146	0.75	46	45	4,345,550	4,285,043	80,507	1.81
2874	5,358,300	0	0.00	27	30	4,908,470	4,920,155	-11,685	-0.22
2875	2,641,100	-24,271	-0.92	44	42	1,338,556	1,482,338	-143,782	-5.44
2879	10,079,300	-11,967	-0.12	70	66	9,711,661	9,600,659	111,001	1.10
2891	5,934,700	21,274	0.36	137	130	5,872,012	5,674,480	197,532	3.33
2892	1,138,300	0	0.00	29	30	1,048,943	1,058,796	-9,853	-0.87
2893	3,805,600	-20,444	-0.54	163	163	3,567,306	3,577,774	-10,468	-0.28
2895	772,300	0	0.00	12	11	711,646	693,140	18,506	2.40
2899	12,199,000	44,715	0.37	238	245	10,418,624	10,762,568	-343,945	-2.82
29	151,261,200	7,108	0.00	673	672	146,647,220	146,816,950	-169,730	-0.11
2911	136,023,300	0	0.00	145	146	132,280,285	132,590,770	-310,485	-0.23
2951	4,724,900	-28,818	-0.61	313	313	3,891,185	3,891,814	-629	-0.01
2952	4,267,500	8,333	0.20	94	93	4,112,083	4,110,184	1,899	0.04
2992	5,367,600	0	0.00	105	105	5,380,895	5,267,681	113,214	2.11
2999	877,900	27,591	3.14	16	15	982,772	956,501	26,271	2.99
30	145,425,600	-52,833	-0.04	3,289	3,292	135,254,595	135,700,553	-445,959	-0.31
3011	14,073,900	0	0.00	69	69	13,809,061	13,809,061	0	0.00
3021	909,500	0	0.00	18	17	867,490	864,281	3,209	0.35
3052	3,294,800	0	0.00	56	57	2,861,365	2,867,919	-6,554	-0.20
3053	4,518,700	-4,952	-0.11	88	90	5,320,299	5,425,074	-104,775	-2.32
3061	5,741,800	-6,834	-0.12	93	92	4,883,769	4,849,658	34,110	0.59
3069	8,332,000	13,899	0.16	146	152	7,514,882	7,731,359	-216,477	-2.60
3081	13,912,000	-11,197	-0.08	177	176	12,869,286	12,843,041	26,245	0.19
3082	4,196,200	28,896	0.71	69	69	3,610,788	3,569,197	41,591	0.99
3083	2,570,200	-29,532	-1.15	29	27	2,271,247	2,152,139	119,108	4.63
3084	3,854,400	0	0.00	95	96	3,980,950	4,015,544	-34,594	-0.90
3085	6,172,500	4,872	0.08	166	163	6,817,321	5,609,493	207,828	3.37
3086	11,428,200	-26,994	-0.24	306	309	11,516,198	11,782,112	-245,914	-2.15
3087	6,302,200	0	0.00	181	159	6,106,095	6,027,727	78,368	1.24
3088	1,577,600	-11,676	-0.74	36	37	1,351,388	1,371,839	-20,451	-1.30
3089	58,541,600	-10,115	-0.02	1,780	1,779	52,474,456	52,802,109	-327,653	-0.56
31	9,064,000	0	0.00	183	181	7,724,714	7,619,686	105,027	1.16
3111	3,118,600	-5,148	-0.17	45	43	2,600,578	2,510,900	89,678	2.88
3131	281,700	0	0.00	7	7	179,131	179,131	0	0.00
3142	113,100	0	0.00	4	3	134,071	110,025	24,046	21.26
3143	2,429,900	0	0.00	42	44	2,105,702	2,158,449	-52,747	-2.17
3144	757,700	0	0.00	27	30	745,526	749,488	-3,962	-0.52
3149	397,300	0	0.00	12	10	290,432	276,258	14,174	3.57
3151	113,600	0	0.00	5	5	248,083	248,083	0	0.00
3161	835,100	0	0.00	10	10	450,131	473,397	-23,266	-2.79
3171	304,500	0	0.00	6	6	366,805	366,805	0	0.00
3172	321,200	0	0.00	11	10	237,700	230,046	7,654	2.38
3199	391,300	5,148	1.32	14	13	366,554	317,104	49,450	12.64
32	75,990,100	-19,951	-0.03	2,601	2,604	70,424,522	70,379,081	45,441	0.06
3211	2,595,200	0	0.00	25	25	2,584,557	2,584,557	0	0.00
3221	4,429,600	0	0.00	66	67	4,519,325	4,519,325	0	0.00
3229	5,387,300	-2,734	-0.05	67	67	5,224,481	5,224,481	0	0.00
3231	8,095,500	-5,331	-0.07	135	134	6,784,374	6,758,819	25,555	0.32
3241	5,342,300	0	0.00	89	89	5,094,873	5,094,873	0	0.00
3251	1,283,300	0	0.00	68	67	1,444,088	1,433,674	10,414	0.81
3253	937,600	0	0.00	17	17	939,483	939,483	0	0.00
3255	958,200	0	0.00	29	30	870,379	810,900	59,479	6.21
3259	150,400	0	0.00	5	5	D	D	D	D
3261	1,019,100	0	0.00	15	15	829,176	829,176	0	0.00
3262	368,000	0	0.00	8	8	310,218	310,218	0	0.00
3283	46,300	0	0.00	2	2	D	D	D	D

Table 1. Counts and Weighted Shipments of Establishments By Industry Using Classifications In Selected Years

Industry	ASM estimate of 1995 industry VS (\$,000)	Data for 1994 Adds		Data for establishments that matched in '95 and '92				Difference between sums with 92 and with '95 classifications (\$,000)	As percent of industry VS
		Difference between sums with 94 and with '95 classifications		Count of estab's -- '92 classifications	Count of estab's -- '95 classifications	Weighted sum of '95 shipments with '92 class (\$,000)	Weighted sum of '95 shipments with '95 class (\$,000)		
		(\$,000)	as percent of industry VS						
3264	1,399,600	0	0.00	20	21	1,504,151	1,511,550	-7,399	-0.53
3269	899,400	0	0.00	13	13	395,990	397,583	-1,593	-0.23
3271	2,597,900	16,813	0.65	113	117	2,270,729	2,286,823	-16,094	-0.62
3272	7,616,400	4,377	0.06	439	442	6,882,163	6,917,314	-35,151	-0.48
3273	15,081,300	15,283	0.10	1,107	1,105	13,232,746	13,215,849	16,897	0.11
3274	838,900	25	0.00	11	11	978,455	978,455	0	0.00
3275	3,455,800	-13,212	-0.38	82	83	3,385,077	3,417,095	-32,018	-0.93
3281	1,096,400	-4,494	-0.41	29	30	932,053	935,210	-3,158	-0.29
3291	4,352,400	-488	-0.01	55	55	4,505,924	4,523,143	-17,219	-0.40
3292	0	0		2		D	D		
3295	1,993,000	488	0.02	74	75	1,870,963	1,876,236	-5,273	-0.26
3296	3,966,700	-7,532	-0.19	67	65	3,835,781	3,804,153	31,628	0.80
3297	1,370,400	0	0.00	38	33	1,280,369	1,258,434	1,935	0.14
3299	909,100	-23,146	-2.55	27	28	555,649	576,567	-20,917	-2.30
33	180,302,900	-75,561	-0.04	1,436	1,449	172,374,177	172,309,113	65,064	0.04
3312	54,113,400	0	0.00	140	147	52,527,711	52,605,215	-77,504	-0.14
3313	1,211,000	0	0.00	10	9	822,873	800,386	22,487	1.86
3315	5,372,000	-12,713	-0.24	68	68	5,012,537	4,983,673	48,864	0.91
3316	7,057,700	0	0.00	50	50	7,455,380	7,455,380	0	0.00
3317	6,792,900	-19,467	-0.29	100	99	6,129,089	6,098,155	30,934	0.46
3321	10,168,900	-16,184	-0.16	145	143	10,083,388	9,876,264	207,124	2.04
3322	312,400	16,184	5.18	4	4	252,564	252,564	0	0.00
3324	1,943,600	0	0.00	24	25	1,805,483	1,783,843	21,640	1.11
3325	2,811,800	0	0.00	56	56	2,136,322	2,088,290	48,032	1.71
3331	8,660,900	0	0.00	17	17	8,657,241	8,657,241	0	0.00
3334	6,677,800	-5,243	-0.08	29	30	6,577,346	6,585,595	-8,249	-0.12
3339	3,082,700	0	0.00	29	33	2,639,767	2,677,266	-37,501	-1.22
3341	7,628,900	0	0.00	64	64	6,674,218	6,695,289	-21,071	-0.28
3351	8,183,700	0	0.00	49	50	7,949,954	7,985,962	-36,008	-0.44
3353	13,913,800	-74,502	-0.54	35	36	13,101,753	13,166,108	-64,355	-0.46
3354	5,859,900	-11,807	-0.21	77	76	5,108,239	5,159,750	-51,511	-0.91
3355	781,800	0	0.00	5	6	615,747	673,295	-57,548	-7.36
3356	3,500,900	0	0.00	60	60	3,286,305	3,304,486	-18,181	-0.52
3357	16,276,800	0	0.00	171	178	16,176,116	16,111,805	64,311	0.40
3363	4,213,200	-12,354	-0.29	56	56	4,014,844	4,014,844	0	0.00
3364	1,322,300	0	0.00	29	29	1,254,902	1,253,850	1,052	0.08
3365	3,012,500	0	0.00	72	71	2,961,686	2,924,737	36,949	1.23
3366	776,700	0	0.00	5	5	560,682	560,682	0	0.00
3369	506,300	74,502	14.72	8	7	523,636	486,738	37,098	7.33
3368	3,192,500	-25,691	-0.80	64	64	3,162,268	3,162,268	0	0.00
3399	3,128,500	11,714	0.37	69	71	2,883,927	2,965,426	-81,499	-2.61
34	204,819,200	-19,321	-0.01	4,986	4,996	186,969,810	187,113,408	-143,599	-0.07
3411	12,325,500	-764	-0.01	189	192	11,400,457	11,507,811	-107,354	-0.87
3412	1,308,100	0	0.00	35	34	1,325,502	1,260,320	65,182	4.98
3421	1,921,100	0	0.00	18	18	1,789,844	1,723,500	66,344	3.45
3423	5,088,600	0	0.00	90	89	5,033,404	5,048,961	-15,557	-0.31
3425	1,377,300	0	0.00	17	17	1,985,049	1,985,049	0	0.00
3429	10,621,500	21,055	0.20	184	187	9,471,959	9,460,176	11,783	0.11
3431	909,400	0	0.00	9	9	683,178	663,178	0	0.00
3432	3,409,200	0	0.00	34	33	3,418,482	3,358,465	60,017	1.76
3433	2,706,000	0	0.00	71	72	2,382,741	2,468,614	-85,873	-3.17
3441	10,822,200	-52,809	-0.49	436	433	9,923,345	9,743,113	180,232	1.67
3442	8,228,100	97,043	1.18	186	184	7,920,386	7,791,031	129,355	1.57
3443	10,912,400	3,005	0.03	271	269	9,556,641	9,486,959	69,682	0.64
3444	14,394,400	-2,155	-0.01	554	555	12,719,898	12,654,889	65,008	0.45
3446	2,860,900	2,272	0.08	110	112	2,113,475	2,132,503	-19,028	-0.67
3448	4,221,700	-20,775	-0.49	55	59	3,953,517	4,003,987	-50,470	-1.20
3449	4,637,700	0	0.00	111	112	4,423,606	4,473,567	-49,961	-1.08
3451	5,130,900	4,018	0.08	206	207	5,323,569	5,343,290	-19,721	-0.38
3452	6,393,100	-29,603	-0.46	164	163	5,149,901	5,125,181	24,720	0.39
3462	3,911,000	0	0.00	42	39	3,104,561	3,068,972	37,589	0.96
3463	1,500,100	0	0.00	21	20	1,271,880	1,260,754	11,126	0.74
3465	20,638,900	-9,928	-0.05	198	204	19,977,370	19,952,915	24,455	0.12

Table 1. Counts and Weighted Shipments of Establishments By Industry Using Classifications In Selected Years

Industry	ASM estimate of 1995 industry VS (\$,000)	Data for 1994 Adds		Data for establishments that matched in '95 and '92				Difference between sums with '92 and with '95 classifications			
		Difference between sums with '94 and with '95 classifications (\$,000)	as percent of industry VS	Count of estab's -- '92 classifications	Count of estab's -- '95 classifications	Weighted sum of '95 shipments with '92 classf (\$,000)	Weighted sum of '95 shipments with '95 classf (\$,000)	Difference between sums with '92 and with '95 classifications (\$,000)	As percent of industry VS		
3466	821,200	0	0.00	14	13	585,445	557,341	28,104	3.42		
3469	12,545,400	-22,411	-0.18	393	386	12,495,149	12,233,914	261,235	2.08		
3471	5,778,400	22,024	0.38	300	297	5,772,835	5,175,477	597,358	10.34		
3479	7,498,200	23,016	0.31	200	207	5,945,183	6,483,781	-538,578	-7.18		
3482	919,500	0	0.00	8	7	914,694	892,644	22,050	2.40		
3483	2,024,100	0	0.00	27	30	1,520,667	1,965,693	-445,026	-21.99		
3484	1,385,800	0	0.00	17	16	1,205,279	1,141,278	64,001	4.62		
3489	1,244,200	0	0.00	11	9	992,606	1,028,152	-35,546	-2.86		
3491	8,026,400	0	0.00	149	152	7,935,622	7,901,841	33,781	0.42		
3492	4,707,300	3,809	0.08	89	88	4,045,456	4,239,817	-194,161	-4.12		
3493	570,900	0	0.00	30	28	613,351	493,530	119,821	20.99		
3494	2,309,200	0	0.00	59	59	2,204,624	2,197,861	6,763	0.29		
3495	2,223,900	0	0.00	69	68	2,097,303	2,083,556	13,747	0.62		
3496	4,606,800	-41,932	-0.91	114	114	3,962,031	3,962,031	0	0.00		
3497	3,696,900	0	0.00	33	35	3,052,216	3,210,358	-158,142	-4.28		
3498	3,774,500	3,037	0.08	184	186	3,320,344	3,350,999	-30,655	-0.81		
3499	9,368,400	-18,224	-0.19	288	295	7,398,242	7,684,122	-285,879	-3.05		
35	351,113,300	-58,349	-0.02	5,329	5,311	320,533,615	320,756,364	-222,749	-0.06		
3511	6,143,800	0	0.00	30	31	5,758,741	6,002,408	-243,667	-3.97		
3519	16,670,700	0	0.00	96	97	16,235,147	16,104,602	130,545	0.78		
3523	13,745,000	20	0.00	98	97	12,125,682	12,290,762	-165,080	-1.20		
3524	6,971,300	0	0.00	41	43	6,783,821	6,981,784	-197,963	-2.84		
3531	19,978,800	45,072	0.23	148	146	19,709,720	19,480,850	228,870	1.15		
3532	2,113,500	0	0.00	17	23	1,402,900	1,538,606	-135,706	-6.42		
3533	3,790,700	3,137	0.08	70	72	3,249,619	3,141,972	107,647	2.84		
3534	1,129,100	-8,052	-0.71	30	30	967,273	967,273	0	0.00		
3535	5,331,800	-23,824	-0.45	94	91	4,605,328	4,599,995	5,333	0.10		
3536	1,203,300	0	0.00	24	25	962,505	967,281	-4,777	-0.40		
3537	4,909,700	0	0.00	41	44	4,398,593	4,604,745	-206,152	-4.20		
3541	4,056,000	-5,719	-0.14	55	55	3,428,347	3,401,396	26,951	0.66		
3542	1,982,200	-777	-0.04	25	24	1,507,435	1,496,789	10,646	0.54		
3543	627,300	0	0.00	38	37	756,111	744,162	11,949	1.90		
3544	12,476,300	-13,285	-0.11	814	810	11,178,372	11,069,754	88,618	0.71		
3545	5,341,400	2,672	0.05	152	156	4,448,877	4,552,530	-103,653	-1.94		
3546	3,790,800	0	0.00	28	31	3,540,862	3,502,853	38,009	1.00		
3547	658,200	0	0.00	12	12	574,443	574,443	0	0.00		
3548	3,302,900	0	0.00	48	45	3,223,367	3,040,635	182,732	5.53		
3549	2,822,300	-4,075	-0.14	70	73	2,887,489	2,990,959	-103,470	-3.67		
3552	1,995,800	-287	-0.01	43	43	1,882,958	1,882,958	0	0.00		
3553	1,482,600	0	0.00	34	34	1,322,628	1,355,085	-32,457	-2.19		
3554	3,424,100	0	0.00	59	62	2,951,201	3,044,709	-93,508	-2.73		
3555	3,498,200	-6,745	-0.19	79	88	3,395,598	3,471,136	-75,538	-2.16		
3556	2,819,100	-12,418	-0.44	54	54	2,445,006	2,404,130	40,876	1.45		
3559	18,826,300	40,219	0.21	232	243	16,755,298	16,939,091	-183,793	-0.98		
3561	6,082,800	-12,098	-0.20	109	111	6,078,918	6,106,617	-27,699	-0.46		
3562	5,281,100	0	0.00	68	66	4,785,583	4,737,325	48,258	0.91		
3563	5,087,000	27,301	0.54	56	60	4,626,485	4,760,529	-134,044	-2.64		
3564	3,852,600	-13,279	-0.38	84	86	2,859,621	2,859,863	-242	-0.01		
3565	4,184,700	-17,543	-0.42	96	95	3,632,791	3,637,057	-4,278	-0.10		
3566	2,351,200	-5,041	-0.21	49	51	2,174,865	2,277,898	-103,033	-4.38		
3567	2,654,700	-14,368	-0.54	48	50	2,376,450	2,407,715	-31,265	-1.18		
3568	2,897,100	5,041	0.17	65	64	2,495,196	2,498,698	-3,502	-0.12		
3569	7,031,100	-6,207	-0.09	215	224	6,372,966	6,598,978	-226,012	-3.21		
3571	57,054,000	-4,778	-0.01	475	395	49,702,218	50,116,588	-414,370	-0.73		
3572	11,725,600	0	0.00	41	50	11,850,764	11,040,091	810,673	6.91		
3575	1,498,700	0	0.00	31	26	1,530,679	1,214,270	316,409	21.11		
3577	14,718,500	-5,368	-0.04	161	166	14,249,916	13,862,358	387,559	2.63		
3578	1,462,500	0	0.00	23	26	1,374,969	1,450,700	-75,731	-5.18		
3579	3,789,600	0	0.00	58	58	3,586,914	3,735,849	-148,935	-3.93		
3581	956,300	0	0.00	13	13	791,085	791,085	0	0.00		
3582	608,400	0	0.00	10	9	425,184	369,325	55,859	9.18		
3585	26,227,000	0	0.00	260	255	25,846,821	26,006,463	-159,642	-0.61		
3586	1,479,000	0	0.00	15	14	1,317,638	1,290,039	27,599	1.87		

Table 1. Counts and Weighted Shipments of Establishments By Industry Using Classifications In Selected Years

Industry	Data for 1994 Adds			Data for establishments that matched in '95 and '92				Difference between sums with	
	ASM estimate of 1995	Difference between sums with 94 and with '95 classifications	as percent of industry VS	Count of estab's - '92 classifications	Count of estab's - '95 classifications	Weighted sum of '95 shipments with '92 classf (\$,000)	Weighted sum of '95 shipments with '95 classf (\$,000)	(\$,000)	As percent of industry VS
	industry VS (\$,000)	(\$,000)							
3589	7,303,800	4,751	0.07	118	118	6,378,323	6,412,081	-33,758	-0.46
3592	2,834,400	0	0.00	39	40	2,968,890	2,941,453	27,437	0.97
3593	2,567,000	0	0.00	54	53	2,671,041	2,630,941	40,100	1.56
3594	1,892,900	0	0.00	32	30	1,813,443	1,683,401	130,042	6.87
3596	642,800	-7,608	-1.18	13	14	736,284	779,643	-43,359	-6.75
3599	28,039,500	-23,090	-0.08	784	771	23,389,248	23,376,477	12,771	0.05
36	299,837,000	-36,927	-0.01	3,327	3,368	284,441,458	287,083,683	-2,642,227	-0.88
3612	5,344,200	0	0.00	62	64	7,015,980	7,153,827	-137,847	-2.58
3613	6,796,800	0	0.00	137	140	6,335,124	6,453,392	-118,268	-1.74
3621	10,757,400	-99,201	-0.92	148	153	10,547,963	10,816,004	-268,041	-2.49
3624	1,704,600	0	0.00	20	21	1,591,923	1,617,272	-25,349	-1.49
3625	9,840,500	0	0.00	180	177	9,198,137	8,990,413	207,724	2.11
3629	2,688,800	3,018	0.11	63	62	2,923,982	2,691,266	232,716	8.68
3631	3,788,200	0	0.00	29	31	3,708,153	3,842,757	-134,604	-3.55
3632	5,005,600	0	0.00	13	13	4,552,587	4,552,587	0	0.00
3633	3,958,800	0	0.00	11	11	3,915,632	3,915,632	0	0.00
3634	3,184,300	0	0.00	49	49	3,010,437	2,939,576	70,861	2.24
3635	2,030,900	0	0.00	15	14	1,868,357	1,859,706	8,651	0.43
3639	4,433,300	0	0.00	18	20	4,200,231	4,293,824	-93,393	-2.11
3641	2,888,900	0	0.00	42	40	3,034,026	2,831,353	202,673	7.02
3643	5,154,500	0	0.00	104	106	4,537,024	4,487,495	49,528	0.96
3644	4,127,200	-12,088	-0.29	56	57	3,651,180	3,628,557	22,623	0.55
3645	1,744,600	3,642	0.21	34	36	1,323,226	1,527,067	-203,871	-11.69
3646	3,836,100	-3,195	-0.08	47	46	3,504,209	3,543,983	-39,774	-1.04
3647	2,965,300	0	0.00	20	20	2,387,531	2,387,531	0	0.00
3648	2,521,000	-7,597	-0.30	43	43	2,574,011	2,515,647	58,364	2.32
3651	11,278,000	0	0.00	60	59	10,820,164	10,777,214	42,950	0.38
3652	2,434,000	0	0.00	52	52	2,084,231	2,084,231	0	0.00
3661	25,858,600	0	0.00	177	181	24,167,909	24,577,536	-409,627	-1.58
3663	29,360,300	17,232	0.06	238	237	27,527,049	28,037,802	-510,753	-1.74
3669	3,595,600	0	0.00	81	86	3,770,045	3,838,828	-131,219	-3.65
3671	3,447,700	0	0.00	32	30	3,148,229	3,143,133	5,096	0.15
3672	9,577,900	-74	0.00	250	252	8,892,565	8,410,405	282,159	2.95
3674	65,622,900	0	0.00	193	196	66,004,508	65,856,580	147,928	0.23
3675	2,346,000	0	0.00	37	35	2,336,356	2,277,645	58,711	2.50
3676	890,700	0	0.00	27	26	1,033,174	1,018,746	14,428	1.62
3677	1,471,700	25,525	1.73	44	45	1,311,895	1,348,971	-37,076	-2.52
3678	4,860,200	27,473	0.57	70	76	4,165,494	4,360,346	-194,852	-4.01
3679	31,070,600	9,087	0.03	571	589	25,450,544	27,319,184	-1,868,640	-8.01
3691	4,048,100	0	0.00	58	58	3,796,239	3,796,239	0	0.00
3692	1,864,700	0	0.00	21	20	2,245,523	2,209,832	35,691	1.91
3694	8,290,900	0	0.00	99	98	7,895,523	7,753,302	142,221	1.79
3695	5,481,500	0	0.00	38	40	5,106,354	5,329,570	-223,216	-4.07
3699	5,576,600	-749	-0.01	188	183	5,205,963	5,096,423	109,540	1.96
37	462,615,800	92,117	0.02	1,979	1,979	433,495,658	432,094,178	1,401,481	0.30
3711	200,939,400	6,898	0.00	113	115	187,090,413	187,346,704	-256,291	-0.13
3713	7,802,700	0	0.00	116	110	7,094,072	6,793,881	300,191	3.85
3714	107,417,300	-23,558	-0.02	783	783	100,497,752	100,911,023	-413,270	-0.38
3715	6,381,500	0	0.00	65	67	5,943,601	5,884,341	59,260	0.93
3716	3,640,300	0	0.00	35	35	3,612,467	3,575,425	37,042	1.02
3721	49,504,100	170	0.00	57	61	47,415,676	47,580,728	-165,052	-0.33
3724	17,519,400	0	0.00	146	143	15,413,157	15,308,786	106,371	0.61
3728	16,841,300	0	0.00	160	163	15,657,029	16,257,117	-600,088	-3.58
3731	9,585,900	0	0.00	86	89	9,331,718	9,438,463	-106,745	-1.11
3732	5,639,900	0	0.00	158	156	5,057,048	4,962,708	94,340	1.67
3743	7,316,700	0	0.00	62	62	6,931,977	6,859,016	72,961	1.00
3751	2,832,900	7,471	0.26	25	26	2,325,778	2,326,562	-784	-0.03
3761	14,315,200	0	0.00	22	18	14,438,289	12,567,245	1,869,045	13.06
3764	2,953,600	0	0.00	21	22	2,871,979	2,881,035	-209,056	-7.08
3769	1,397,900	0	0.00	23	20	1,996,529	1,376,446	620,083	44.36
3792	2,593,800	0	0.00	37	37	2,527,778	2,527,778	0	0.00
3795	1,375,400	0	0.00	14	14	1,337,778	1,337,778	0	0.00
3799	4,558,500	101,136	2.22	56	58	4,154,615	4,161,141	-6,526	-0.14

Table 1. Counts and Weighted Shipments of Establishments By Industry Using Classifications In Selected Years

Industry	Data for 1994 Adds			Data for establishments that matched in '95 and '92						
	ASM estimate	Difference between sums with		Count of	Count of	Weighted sum	Weighted sum	Difference between sums with		
	of 1995	'94 and with '95 classifications	as percent of	estab's -- '92	estab's -- '95	of '95 shipments	of '95 shipments	'92 and with '95 classifications	As percent of	
industry VS	(\$,000)	industry VS	classifications	classifications	with '92 class	with '95 class	(\$,000)	(\$,000)	(\$,000)	industry VS
38	140,910,600	3,189	0.00	1,601	1,798	131,985,581	131,692,323	293,258	0.21	
3812	29,434,800	0	0.00	213	213	28,348,445	28,673,442	-326,997	-1.11	
3821	2,349,300	0	0.00	35	35	2,114,483	2,095,281	19,182	0.82	
3822	2,738,900	929	0.03	47	45	2,799,888	2,712,594	87,294	3.19	
3823	7,864,900	-20,249	-0.26	166	172	7,265,881	7,496,383	-240,482	-3.06	
3824	3,255,700	19,276	0.59	36	37	3,345,076	3,302,393	42,683	1.31	
3825	11,909,000	12,088	0.10	126	129	10,457,866	10,521,493	-63,627	-0.53	
3826	6,770,200	-5,680	-0.08	153	153	6,553,045	6,424,116	128,929	1.90	
3827	2,899,600	0	0.00	97	101	2,745,603	2,928,993	-183,390	-6.32	
3829	4,891,000	5,748	0.12	113	115	4,464,746	4,449,299	15,447	0.32	
3841	15,441,900	-1,686	-0.01	257	249	13,745,694	13,623,920	121,774	0.79	
3842	14,850,400	-8,672	-0.06	222	219	14,588,897	14,297,975	290,922	1.96	
3843	2,391,000	1,418	0.06	48	47	2,263,945	2,210,575	53,370	2.23	
3844	3,422,700	0	0.00	29	28	3,111,401	3,089,782	21,619	0.63	
3845	7,114,300	0	0.00	63	60	7,085,526	6,839,506	246,020	3.46	
3851	3,212,600	0	0.00	53	54	2,960,159	3,023,699	-63,540	-1.98	
3861	21,583,500	0	0.00	125	123	19,465,762	19,321,708	144,054	0.67	
3873	780,800	0	0.00	18	18	681,185	681,185	0	0.00	
39	46,891,300	136,465	0.29	1,079	1,080	39,412,133	39,837,006	-424,873	-0.91	
3911	4,439,400	-7,913	-0.18	104	106	4,418,441	4,478,300	-59,859	-1.35	
3914	808,700	0	0.00	21	20	730,506	728,727	1,779	0.22	
3915	973,600	0	0.00	37	36	1,165,636	1,054,848	110,788	11.38	
3931	1,144,100	-7,828	-0.68	25	24	1,044,039	1,006,601	37,438	3.27	
3942	226,900	-2,396	-1.06	9	9	132,370	132,370	0	0.00	
3944	4,810,400	17,360	0.36	75	77	4,083,348	4,335,187	-251,839	-5.24	
3949	9,588,000	-21,677	-0.23	147	146	7,505,532	7,494,865	10,667	0.11	
3951	1,152,800	0	0.00	19	18	1,199,623	1,093,975	105,648	9.16	
3952	1,081,100	0	0.00	15	15	873,945	873,945	0	0.00	
3953	841,200	0	0.00	13	12	754,244	715,846	38,398	4.56	
3955	878,800	0	0.00	10	10	349,384	349,384	0	0.00	
3961	1,666,100	0	0.00	41	42	1,508,607	1,565,271	-56,664	-3.40	
3965	856,900	-15,155	-1.77	13	14	431,270	446,355	-15,085	-1.76	
3991	1,559,700	0	0.00	42	43	1,495,450	1,620,397	-124,947	-8.01	
3993	6,735,500	0	0.00	239	236	5,821,363	5,720,100	101,263	1.50	
3995	1,196,000	0	0.00	20	20	889,348	889,348	0	0.00	
3996	1,718,000	0	0.00	12	12	1,564,071	1,564,071	0	0.00	
3999	7,214,100	174,074	2.41	237	240	5,444,959	5,767,399	-322,440	-4.47	
Aux.		18,878	0	17	0	1,781,386	0	1,781,386		
Nonmfg		116,006	0	31	0	170,412	0	170,412		

Table 2. Counts and Weighted Shipments of Establishments By Industry Using Classifications In Selected Years										
Sorted in Descending Order by the Absolute Value of "Difference between sums with '92 and '95 classifications as percent of industry VS"										
Industry	ASM estimate of 1995 industry VS (\$,000)	Data for 1994 Adds		Data for establishments that matched in '95 and '92		Weighted sum of '95 shipments with '92 classf (\$,000)	Weighted sum of '95 shipments with '95 classf (\$,000)	Difference between sums with '92 and with '95 classifications		
		Difference between sums with '94 and with '95 classifications (\$,000)	as percent of industry VS	Count of estab's -- '92 classifications	Count of estab's -- '95 classifications			(\$,000)	(\$,000)	As percent of industry VS
3769	1,397,900	0	0.00	23	20	1,996,529	1,376,446	620,083	44.36	
2843	4,888,600	0	0.00	50	52	2,541,036	4,492,679	-1,951,643	-39.94	
2384	252,400	0	0.00	7	5	178,475	103,908	74,567	29.54	
2812	2,729,600	0	0.00	20	18	2,968,541	2,317,500	651,041	23.85	
3483	2,024,100	0	0.00	27	30	1,520,667	1,965,693	-445,026	-21.99	
3142	113,100	0	0.00	4	3	134,071	110,025	24,046	21.26	
3575	1,498,700	0	0.00	31	26	1,530,679	1,214,270	316,409	21.11	
3493	570,900	0	0.00	30	28	613,351	493,530	119,821	20.99	
2261	2,427,000	0	0.00	50	51	2,778,999	2,344,685	434,314	17.90	
2611	6,924,000	0	0.00	27	26	7,604,627	6,657,879	946,748	13.67	
2253	5,675,200	-118,637	-2.09	96	99	4,252,694	5,027,266	-774,592	-13.65	
2389	2,048,000	0	0.00	55	61	1,648,403	1,928,918	-278,515	-13.60	
3761	14,315,200	0	0.00	22	18	14,436,289	12,567,245	1,869,045	13.06	
2321	5,200,600	0	0.00	175	174	5,639,962	4,963,103	676,859	13.02	
3199	391,300	5,148	1.32	14	13	366,554	317,104	49,450	12.64	
2342	2,083,300	0	0.00	26	29	1,858,774	2,107,823	-249,049	-11.95	
3645	1,744,600	3,642	0.21	34	36	1,323,226	1,527,097	-203,871	-11.69	
2098	1,938,500	0	0.00	21	24	1,020,328	1,244,767	-224,439	-11.59	
3915	973,600	0	0.00	37	36	1,165,638	1,054,848	110,788	11.38	
3471	5,778,400	22,024	0.38	300	297	5,772,835	5,175,477	597,358	10.34	
2341	2,493,800	0	0.00	77	74	2,776,151	2,522,986	253,165	10.15	
2262	3,909,800	0	0.00	79	79	3,499,881	3,888,215	-388,334	-9.93	
2395	718,500	-785	-0.11	31	30	598,486	527,486	70,980	9.88	
3582	608,400	0	0.00	10	9	425,184	369,325	55,859	9.18	
3951	1,152,800	0	0.00	19	18	1,199,823	1,093,975	105,848	9.16	
3629	2,686,800	3,018	0.11	63	62	2,923,982	2,691,266	232,716	8.66	
2331	3,770,900	-28,925	-0.77	126	133	2,912,548	3,227,897	-315,349	-8.36	
2322	717,900	-4,800	-0.67	26	25	670,029	610,025	60,004	8.36	
2361	1,631,300	0	0.00	51	50	1,201,184	1,334,187	-133,003	-8.15	
2079	4,671,800	0	0.00	43	43	5,080,287	4,702,561	377,726	8.09	
3991	1,559,700	0	0.00	42	43	1,495,450	1,620,397	-124,947	-8.01	
2385	183,000	0	0.00	6	4	165,629	151,029	14,600	7.98	
2231	1,835,900	0	0.00	20	21	1,425,386	1,563,689	-138,303	-7.53	
3355	781,800	0	0.00	5	6	615,747	673,295	-57,548	-7.36	
3369	506,300	74,502	14.72	8	7	523,836	486,738	37,098	7.33	
2599	3,093,400	2,819	0.09	73	78	2,392,055	2,617,999	-225,944	-7.30	
2782	4,538,600	0	0.00	156	161	3,922,809	4,249,573	-326,764	-7.20	
3479	7,498,200	23,018	0.31	200	207	5,945,183	6,483,761	-538,578	-7.18	
3764	2,953,600	0	0.00	21	22	2,671,979	2,881,035	-209,056	-7.08	
3641	2,888,900	0	0.00	42	40	3,034,026	2,831,353	202,673	7.02	
3572	11,725,600	0	0.00	41	50	11,850,764	11,040,091	810,673	6.91	
3594	1,892,900	0	0.00	32	30	1,813,443	1,683,401	130,042	6.87	
3596	642,800	-7,608	-1.18	13	14	736,284	779,643	-43,359	-6.75	
3532	2,113,500	0	0.00	17	23	1,402,900	1,538,806	-135,706	-6.42	
3827	2,899,600	0	0.00	97	101	2,745,603	2,928,993	-183,390	-6.32	
3255	958,200	0	0.00	29	30	870,379	810,900	59,479	6.21	
3679	31,070,600	9,087	0.03	571	589	25,450,544	27,319,184	-1,868,640	-6.01	
2021	947,000	0	0.00	10	8	747,492	691,430	56,062	5.92	
2339	8,410,900	49,343	0.59	270	259	7,506,920	7,031,254	475,666	5.66	
3548	3,302,900	0	0.00	48	45	3,223,367	3,040,635	182,732	5.53	
2836	6,226,600	0	0.00	68	68	5,771,392	6,111,682	-340,290	-5.47	
2875	2,841,100	-24,271	-0.92	44	42	1,338,556	1,482,338	-143,782	-5.44	
2254	972,100	0	0.00	18	21	1,051,391	999,595	51,786	5.33	
3944	4,810,400	17,360	0.36	75	77	4,083,348	4,335,187	-251,839	-5.24	
3578	1,462,500	0	0.00	23	26	1,374,969	1,450,700	-75,731	-5.18	
3412	1,308,100	0	0.00	35	34	1,325,502	1,280,320	45,182	4.98	
2353	1,042,800	-1,085	-0.10	36	38	697,621	748,701	-51,080	-4.90	
2656	2,649,700	0	0.00	50	46	2,716,412	2,589,229	127,183	4.80	
2631	24,528,300	0	0.00	129	131	22,646,822	23,807,697	-1,160,875	-4.73	
2035	7,753,400	10,961	0.14	90	90	8,383,855	8,022,897	360,958	4.66	
3083	2,570,200	-29,532	-1.15	29	27	2,271,247	2,152,139	119,108	4.63	
3484	1,385,800	0	0.00	17	18	1,205,279	1,141,278	64,001	4.62	

Table 2. Counts and Weighted Shipments of Establishments By Industry Using Classifications In Selected Years									
Sorted in Descending Order by the Absolute Value of "Difference between sums with '92 and '95 classifications as percent of industry VS"									
Industry	Data for 1994 Adds			Data for establishments that matched in '95 and '92				Difference between sums with '92 and with '95 classifications	
	ASM estimate of 1995	Difference between sums with '94 and with '95 classifications		Count of estab's -- '92	Count of estab's -- '95	Weighted sum of '95 shipments with '92 class	Weighted sum of '95 shipments with '95 class		
	industry VS (\$,000)	(\$,000)	as percent of industry VS	classifications	classifications	(\$,000)	(\$,000)	(\$,000)	As percent of industry VS
2099	14,024,500	2,501	0.02	257	271	10,388,250	11,034,947	-646,697	-4.61
3953	841,200	0	0.00	13	12	754,244	715,846	38,398	4.56
3999	7,214,100	174,074	2.41	237	240	5,444,959	5,767,399	-322,440	-4.47
2392	6,292,300	-15,336	-0.24	110	107	5,817,341	5,536,694	280,647	4.46
2754	3,990,200	-12,262	-0.31	48	52	3,702,238	3,878,729	-176,491	-4.42
3566	2,351,200	-5,041	-0.21	49	51	2,174,865	2,277,898	-103,033	-4.38
2391	1,333,300	0	0.00	31	32	1,664,872	1,722,246	-57,374	-4.30
3497	3,696,900	0	0.00	33	35	3,052,216	3,210,358	-158,142	-4.28
3537	4,909,700	0	0.00	41	44	4,398,593	4,604,745	-206,152	-4.20
2258	2,608,500	114,136	4.38	62	61	2,071,767	2,180,698	-108,931	-4.18
2732	5,425,100	-994	-0.02	90	90	4,821,661	4,695,744	225,917	4.16
2335	6,983,000	42,805	0.61	273	272	5,063,608	5,351,941	-288,333	-4.13
3492	4,707,300	3,809	0.08	89	88	4,045,456	4,239,617	-194,161	-4.12
3695	5,481,500	0	0.00	38	40	5,106,354	5,329,570	-223,216	-4.07
3678	4,880,200	27,473	0.57	70	76	4,165,494	4,360,346	-194,852	-4.01
2257	5,227,000	0	0.00	124	121	5,289,614	5,062,256	207,358	3.97
3511	6,143,800	0	0.00	30	31	5,758,741	6,002,408	-243,667	-3.97
3579	3,789,600	0	0.00	58	58	3,586,914	3,735,849	-148,935	-3.93
3713	7,802,700	0	0.00	116	110	7,094,072	6,793,881	300,191	3.85
2842	8,700,300	0	0.00	103	110	8,101,196	8,427,498	-326,302	-3.75
3549	2,822,300	-4,075	-0.14	70	73	2,887,489	2,990,959	-103,470	-3.67
3669	3,595,600	0	0.00	81	86	3,770,045	3,638,826	131,219	3.65
3149	397,300	0	0.00	12	10	290,432	276,258	14,174	3.57
3728	16,841,300	0	0.00	160	163	15,657,029	16,257,117	-600,088	-3.56
3631	3,788,200	0	0.00	29	31	3,708,153	3,842,757	-134,604	-3.55
2032	7,643,700	0	0.00	63	64	7,419,333	7,689,667	-270,334	-3.54
2075	13,275,500	0	0.00	75	76	12,364,008	12,826,844	-462,836	-3.49
2022	18,373,600	0	0.00	200	203	17,455,085	18,095,549	-640,464	-3.49
3845	7,114,300	0	0.00	63	60	7,085,526	6,839,506	246,020	3.46
3421	1,921,100	0	0.00	18	16	1,789,844	1,723,500	66,344	3.45
3466	821,200	0	0.00	14	13	585,445	557,341	28,104	3.42
3961	1,666,100	0	0.00	41	42	1,508,607	1,585,271	-56,664	-3.40
2819	17,173,600	0	0.00	280	268	18,147,407	17,567,173	580,234	3.38
3085	6,172,500	4,872	0.08	166	163	5,817,321	5,609,493	207,828	3.37
2891	5,934,700	21,274	0.36	137	130	5,872,012	5,674,480	197,532	3.33
2077	2,033,600	978	0.05	58	61	1,270,575	1,338,060	-67,485	-3.32
3931	1,144,100	-7,828	-0.68	25	24	1,044,039	1,006,601	37,438	3.27
3569	7,031,100	-6,207	-0.09	215	224	6,372,966	6,598,978	-226,012	-3.21

Table 3. Counts and Weighted Shipments of Establishments By Industry Using Classifications In Selected Years										
Sorted in Descending Order by the Absolute Value of "Difference between sums with '94 and '95 classifications as percent of industry VS"										
Industry	ASM estimate of 1995 industry VS (\$,000)	Data for 1994 Adds			Data for establishments that matched in '95 and '92				Difference between sums with 92 and with '95 classifications	
		Difference between sums with 94 and with '95 classifications as percent of industry VS	Count of estab's - '92 classifications	Count of estab's - '95 classifications	Weighted sum of '95 shipments with '92 class (\$,000)	Weighted sum of '95 shipments with '95 class (\$,000)	Difference between sums with 92 and with '95 classifications (\$,000)	As percent of industry VS		
3368	506,300	74,502	14.72	8	7	523,836	486,738	37,098	7.33	
3322	312,400	16,184	5.18	4	4	252,564	252,564	0	0.00	
2258	2,608,500	114,136	4.38	62	61	2,071,787	2,180,698	-108,931	-4.18	
2295	1,827,900	79,128	4.33	22	22	1,707,778	1,707,778	0	0.00	
2519	504,700	-16,870	-3.34	6	6	326,496	326,496	0	0.00	
2999	877,900	27,591	3.14	16	15	982,772	956,501	26,271	2.99	
3299	909,100	-23,146	-2.55	27	28	555,649	576,587	-20,917	-2.30	
3999	7,214,100	174,074	2.41	237	240	5,444,959	5,767,399	-322,440	-4.47	
3799	4,558,500	101,136	2.22	56	58	4,154,815	4,161,141	-6,526	-0.14	
2253	5,675,200	-118,637	-2.09	96	99	4,252,694	5,027,286	-774,592	-13.65	
2329	2,758,300	-55,014	-2.00	125	131	2,476,735	2,540,992	-64,257	-2.33	
3965	858,900	-15,155	-1.77	13	14	431,270	446,355	-15,085	-1.78	
3877	1,471,700	25,525	1.73	44	45	1,311,895	1,348,971	-37,076	-2.52	
2393	917,400	15,336	1.67	33	33	604,922	604,922	0	0.00	
2389	893,900	14,436	1.61	32	33	692,605	695,696	-3,091	-0.35	
2671	4,181,800	61,616	1.47	65	63	4,405,743	4,275,646	130,097	3.11	
3199	391,300	5,148	1.32	14	13	366,554	317,104	49,450	12.64	
3596	642,800	-7,808	-1.18	13	14	738,284	779,643	-43,359	-6.75	
3442	8,228,100	97,043	1.18	186	184	7,920,386	7,791,031	129,355	1.57	
3083	2,570,200	-29,532	-1.15	29	27	2,271,247	2,152,139	119,108	4.83	
3942	226,900	-2,398	-1.08	9	9	132,370	132,370	0	0.00	
2521	2,182,600	21,179	0.97	103	104	1,916,866	1,919,894	-3,027	-0.14	
3621	10,757,400	-99,201	-0.92	148	153	10,547,963	10,816,004	-268,041	-2.49	
2875	2,641,100	-24,271	-0.92	44	42	1,338,556	1,482,336	-143,782	-5.44	
3496	4,606,800	-41,932	-0.91	114	114	3,982,031	3,962,031	0	0.00	
2873	6,913,700	-61,616	-0.89	118	121	6,425,494	6,449,278	-23,784	-0.34	
2759	12,329,100	107,221	0.87	498	495	9,775,360	9,673,439	101,921	0.83	
2096	8,748,900	-73,849	-0.84	82	82	8,506,044	8,474,891	31,153	0.36	
3398	3,192,500	-25,691	-0.80	64	64	3,162,268	3,162,268	0	0.00	
2331	3,770,900	-28,925	-0.77	126	133	2,912,548	3,227,897	-315,349	-8.36	
2873	4,445,900	33,146	0.75	46	45	4,345,550	4,265,043	80,507	1.81	
3088	1,577,600	-11,676	-0.74	36	37	1,351,388	1,371,839	-20,451	-1.30	
3534	1,129,100	-8,052	-0.71	30	30	967,273	967,273	0	0.00	
3082	4,196,200	29,898	0.71	69	69	3,610,788	3,569,197	41,591	0.99	
3931	1,144,100	-7,828	-0.68	25	24	1,044,039	1,006,801	37,438	3.27	
2322	717,900	-4,800	-0.67	26	25	670,029	610,025	60,004	8.36	
2052	10,500,000	68,784	0.66	119	118	10,097,974	10,155,280	-57,306	-0.55	
3271	2,597,900	16,813	0.65	113	117	2,270,729	2,286,823	-16,094	-0.62	
2335	6,983,000	42,805	0.61	273	272	5,063,608	5,351,941	-288,333	-4.13	
2951	4,724,900	-28,816	-0.61	313	313	3,891,185	3,891,814	-629	-0.01	
3824	3,255,700	19,276	0.59	36	37	3,345,076	3,302,393	42,683	1.31	
2824	12,813,300	-75,807	-0.59	49	49	12,492,817	12,405,415	87,402	0.68	
2339	8,410,900	49,343	0.59	270	259	7,508,920	7,031,254	475,666	5.66	
2394	1,320,900	-7,714	-0.58	48	48	885,459	885,459	0	0.00	
3878	4,860,200	27,473	0.57	70	76	4,165,494	4,360,346	-194,852	-4.01	
3567	2,654,700	-14,368	-0.54	48	50	2,376,450	2,407,715	-31,265	-1.18	
2893	3,805,600	-20,444	-0.54	163	163	3,567,306	3,577,774	-10,468	-0.28	
3563	5,087,000	27,301	0.54	56	60	4,826,485	4,760,529	-134,044	-2.64	
3353	13,913,800	-74,502	-0.54	35	36	13,101,753	13,166,108	-64,355	-0.46	
3448	4,221,700	-20,775	-0.49	55	59	3,953,517	4,003,987	-50,470	-1.20	



**Table 4. Counts and Weighted Shipments of Establishments By Industry Using Classifications In Selected Years:  
SIC2 Industries Only**

Industry	Data for 1994 Adds			Data for establishments that matched in '95 and '92					
	ASM estimate of 1995 industry VS (\$,000)	Difference between sums with 94 and with '95 classifications		Count of estab's -- '92 classifications	Count of estab's -- '95 classifications	Weighted sum of '95 shipments with '92 classf (\$,000)	Weighted sum of '95 shipments with '95 classf (\$,000)	Difference between sums with 92 and with '95 classifications	
		(\$,000)	as percent of industry VS					(\$,000)	As percent of industry VS
20	448,405,500	-8,227	0.00	5,144	5,158	426,576,088	427,333,271	-757,183	-0.17
21	32,983,800	0	0.00	37	37	32,206,620	32,206,620	0	0.00
22	79,742,300	83,975	0.11	1,426	1,433	73,850,245	74,459,092	-608,847	-0.76
23	78,096,900	2,987	0.00	2,237	2,240	69,063,616	68,480,196	583,420	0.75
24	104,923,300	0	0.00	3,721	3,720	88,603,620	88,534,696	69,125	0.07
25	53,571,400	-4,338	-0.01	1,113	1,117	45,997,966	46,037,969	-40,003	-0.07
26	172,638,000	-78,255	-0.05	1,900	1,906	163,367,519	163,625,634	-258,115	-0.15
27	188,438,800	-16,486	-0.01	4,362	4,351	164,335,636	163,822,227	513,409	0.27
28	352,126,500	-92,479	-0.03	3,268	3,293	338,978,640	339,537,554	-558,914	-0.15
29	151,261,200	7,108	0.00	673	672	146,647,220	146,818,950	-169,730	-0.11
30	145,425,600	-52,833	-0.04	3,289	3,292	135,254,595	135,700,553	-445,959	-0.31
31	9,064,000	0	0.00	183	181	7,724,714	7,619,686	105,027	1.16
32	75,990,100	-19,951	-0.03	2,601	2,604	70,424,522	70,379,081	45,441	0.06
33	180,302,900	-75,561	-0.04	1,436	1,449	172,374,177	172,309,113	65,064	0.04
34	204,819,200	-19,321	-0.01	4,986	4,996	186,969,810	187,113,408	-143,599	-0.07
35	351,113,300	-56,349	-0.02	5,329	5,311	320,533,615	320,758,364	-222,749	-0.06
36	299,837,000	-36,927	-0.01	3,327	3,366	284,441,456	287,083,683	-2,642,227	-0.66
37	462,615,800	92,117	0.02	1,979	1,979	433,495,656	432,094,178	1,401,481	0.30
38	140,910,600	3,189	0.00	1,801	1,798	131,985,581	131,692,323	293,258	0.21
39	46,891,300	136,465	0.29	1,079	1,080	39,412,133	39,837,006	-424,873	-0.91
Aux's		18,878		17		1,781,386		1,781,386	
Nonmfg		116,006		31	0	170,412	0	170,412	

Table 5. Data for SIC4 Industries in which the Change in Industry VS Due to Reclassification of Matched Establishments is Significantly Different from Zero at the 90 Percent Test Level: 1992-1995

Industry	ASM estimate of 1995 Industry VS (\$,000)	Data for Matched Establishments		Difference between Shipments with 1992 and 1995 Classifications (\$,000)	Test Statistic for Difference in Industry VS
		Sum of Weighted Shipments: 1992 Classifications (\$,000)	Sum of Weighted Shipments: 1995 Classifications (\$,000)		
2022	18,373,600	17,455,085	18,095,549	640,464	1.7171
2032	7,643,700	7,419,333	7,689,667	270,334	3.4984
2046	8,532,500	7,944,331	7,932,526	-11,805	-13.0837
2066	3,302,300	3,219,686	3,147,009	-72,677	-1.9917
2075	13,275,500	12,364,008	12,826,844	462,836	25.2800
2079	4,671,800	5,080,287	4,702,561	-377,726	-1.7481
2231	1,835,900	1,425,386	1,563,689	138,303	6.0185
2253	5,675,200	4,252,694	5,027,286	774,592	3.4197
2257	5,227,000	5,269,614	5,062,258	-207,356	-2.6694
2261	2,427,000	2,778,999	2,344,685	-434,314	-4.5034
2262	3,909,800	3,499,881	3,888,215	388,334	5.1245
2321	5,200,600	5,639,962	4,963,103	-676,859	-3.2265
2384	252,400	178,475	103,908	-74,567	-4.0045
2611	6,924,000	7,604,627	6,657,879	-946,748	-3.6601
2741	11,992,100	9,561,778	9,197,550	-364,228	-1.8272
2812	2,729,600	2,968,541	2,317,500	-651,041	-5.3972
2819	17,173,600	18,147,407	17,567,173	-580,234	-2.2316
2822	5,942,200	5,409,409	5,545,986	136,577	8.2226
2836	6,226,600	5,771,392	6,111,682	340,290	3.0745
2843	4,886,600	2,541,036	4,492,679	1,951,643	11.4453
3083	2,570,200	2,271,247	2,152,139	-119,108	-1.6637
3466	821,200	585,445	557,341	-28,104	-7.4849
3471	5,778,400	5,772,835	5,175,477	-597,358	-2.7573
3479	7,498,200	5,945,183	6,483,761	538,578	3.0597
3483	2,024,100	1,520,667	1,965,693	445,026	8.6722
3493	570,900	613,351	493,530	-119,821	-3.6786
3571	57,054,000	49,702,218	50,116,588	414,370	11.9025
3572	11,725,600	11,850,764	11,040,091	-810,673	-4.7850
3575	1,498,700	1,530,679	1,214,270	-316,409	-4.0779
3577	14,718,500	14,249,916	13,862,358	-387,559	-1.7422
3582	608,400	425,184	369,325	-55,859	-2.3632
3639	4,433,300	4,200,231	4,293,624	93,393	5.2558
3641	2,888,900	3,034,026	2,831,353	-202,673	-5.2134
3661	25,858,600	24,167,909	24,577,536	409,627	1.7451
3663	29,360,300	27,527,049	28,037,802	510,753	1.9891
3679	31,070,600	25,450,544	27,319,184	1,868,640	3.7707
3711	200,939,400	187,090,413	187,346,704	256,291	1.9069
3728	16,841,300	15,657,029	16,257,117	600,088	2.5816
3761	14,315,200	14,436,289	12,567,245	-1,869,045	-83.5196
3769	1,397,900	1,996,529	1,376,446	-620,083	-24.2139
3812	29,434,800	28,346,445	28,673,442	326,997	2.7949
3951	1,152,800	1,199,623	1,093,975	-105,648	-1.8668
3991	1,559,700	1,495,450	1,620,397	124,947	1.8496

Table 6. Data for SIC4 Industries in which the Change Due to Reclassifying Birth Establishments is Significantly Different from Zero at the 90 Percent Test Level: 1995

Industry	ASM estimate of 1995 industry VS (\$,000)	Difference between Shipments with 1994 and 1995 Classifications (\$,000)	Test Statistic for Difference in Industry VS
2096	8,748,900	73,849	17.5165
2299	2,366,700	-9,351	-1.6766
2329	2,756,300	55,014	1.6520
2331	3,770,900	28,925	1.8182
2335	6,983,000	-42,805	-2.2080
2337	3,703,600	6,756	1.9977
2339	8,410,900	-49,343	-1.6445
2389	893,900	-14,436	-19.1914
2521	2,182,600	-21,179	-7.5688
2721	23,904,900	52,630	1.6810
2752	48,773,800	59,903	2.1319
2754	3,990,200	12,262	1.7845
2759	12,329,100	-107,221	-4.1637
2796	3,367,500	12,411	2.2825
2893	3,805,600	20,444	2.8943
2899	12,199,000	-44,715	-3.0200
3069	8,332,000	-13,699	-2.5536
3082	4,196,200	-29,896	-1.6827
3083	2,570,200	29,532	20.7559
3271	2,597,900	-16,813	-1.8275
3272	7,616,400	-4,377	-2.5478
3334	6,677,800	5,243	4.6467
3441	10,822,200	52,809	2.7985
3442	8,228,100	-97,043	-17.2131
3479	7,498,200	-23,016	-12.0456
3534	1,129,100	8,052	3.7223
3541	4,056,000	5,719	5.4617
3555	3,498,200	6,745	1.6663
3567	2,654,700	14,368	2.2610
3714	107,417,300	23,558	1.7054
3799	4,558,500	-101,136	-61.6771
3824	3,255,700	-19,276	-5.0014
3842	14,850,400	8,672	1.9938
3944	4,810,400	-17,360	-15.1823
3949	9,588,000	21,677	3.5159
3999	7,214,100	-174,074	-2.2034

Appendix: Standard Industrial Classification Industry Codes  
and Titles for Manufacturing Industries

Code	Title
20	FOOD AND KINDRED PRODUCTS
2011	Meat Packing Plants
2013	Sausages and Other Prepared Meats
2015	Poultry Slaughtering and Processing
2021	Creamery Butter
2022	Cheese, Natural and Processed
2023	Condensed and Evaporated Milk
2024	Ice Cream and Frozen Desserts
2026	Fluid Milk
2032	Canned Specialties
2033	Canned Fruits and Vegetables
2034	Dehydrated Fruits, Vegetables, and Soups
2035	Pickles, Sauces, and Salad Dressings
2037	Frozen Fruits and Vegetables
2038	Frozen Specialties, n.e.c.
2041	Flour and Other Grain Mill Products
2043	Cereal Breakfast Foods
2044	Rice Milling
2045	Blended and Prepared Flour
2046	Wet Corn Milling
2047	Dog or Cat Food
2048	Prepared Feeds, n.e.c.
2051	Bread, Cake, and Related Products
2052	Cookies and Crackers
2053	Frozen Bakery Products, Except Bread
2061	Raw Cane Sugar
2062	Cane Sugar Refining
2063	Beet Sugar
2064	Candy and Other Confectionery Products
2066	Chocolate and Cocoa Products
2067	Chewing Gum
2068	Salted and Roasted Nuts and Seeds
2074	Cottonseed Oil Mills
2075	Soybean Oil Mills
2076	Vegetable Oil Mills, n.e.c.
2077	Animal and Marine Fats and Oil
2079	Shortening and Cooking Oils
2082	Malt Beverages
2083	Malt
2084	Wines, Brandy, and Brandy Spirits
2085	Distilled Liquor, Except Brandy
2086	Bottled and Canned Soft Drinks
2087	Flavoring Extracts and Syrups, n.e.c.

Code	Title
2091	Canned and Cured Seafood
2092	Fresh or Frozen Packaged Fish
2095	Roasted Coffee
2096	Potato Chips and Similar Snacks
2097	Manufactured Ice
2098	Macaroni and Spaghetti
2099	Food Preparations, n.e.c.
21	TOBACCO MANUFACTURES
2111	Cigarettes
2121	Cigars
2131	Chewing and Smoking Tobacco
2141	Tobacco Stemming and Redrying
22	TEXTILE MILL PRODUCTS
2211	Weaving Mills, Cotton
2221	Weaving Mills, Synthetics
2231	Weaving and Finishing Mills, Wool
2241	Narrow Fabric Mills
2251	Women's Hosiery, Except Socks
2252	Hosiery, n.e.c.
2253	Knit Outerwear Mills
2254	Knit Underwear Mills
2257	Circular Knit Fabric Mills
2258	Lace and Warp Knit Fabric Mills
2259	Knitting Mills, n.e.c.
2261	Finishing Plants, Cotton
2262	Finishing Plants, Synthetics
2269	Finishing Plants, n.e.c.
2273	Carpets and Rugs
2281	Yarn Spinning Mills
2282	Throwing and Winding Mills
2284	Thread Mills
2295	Coated Fabrics, Not Rubberized
2296	Tire Cord and Fabric
2297	Nonwoven Fabrics
2298	Cordage and Twine
2299	Textile Goods, n.e.c.
23	APPAREL AND OTHER TEXTILE PRODUCTS
2311	Men's and Boys' Suits and Coats
2321	Shirts, Men's and Boys'
2322	Men's and Boys' Underwear and Nightwear
2323	Men's and Boys' Neckwear
2325	Men's and Boys' Trousers and Slacks
2326	Men's and Boys' Work Clothing
2329	Men's and Boys' Clothing, n.e.c.

Code Title

-----  
2331 Women's and Misses' Blouses and Waists  
2335 Women's and Misses' Dresses  
2337 Women's and Misses' Suits and Coats  
2339 Women's and Misses' Outerwear, n.e.c.  
2341 Women's and Children's Underwear  
2342 Brassieres and Allied Garments  
2353 Hats, Caps, and Millinery  
2361 Children's Dresses and Blouses  
2369 Girls' and Children's Outerwear, n.e.c.  
2371 Fur Goods  
2381 Fabric Dress and Work Gloves  
2384 Robes and Dressing Gowns  
2385 Waterproof Outer Garments  
2386 Leather and Sheep Lined Clothing  
2387 Apparel Belts  
2389 Apparel and Accessories, n.e.c.  
2391 Curtains and Draperies  
2392 House Furnishings, n.e.c.  
2393 Textile Bags  
2394 Canvas and Related Products  
2395 Pleating and Stitching  
2396 Automotive and Apparel Trimmings  
2397 Schiffli Machine Embroideries  
2399 Fabricated Textile Products, n.e.c.  
24 LUMBER AND WOOD PRODUCTS  
2411 Logging Camps and Logging Contractors  
2421 Sawmills and Planing Mills, General  
2426 Hardwood Dimension and Flooring  
2429 Special Product Sawmills, n.e.c.  
2431 Millwork  
2434 Wood Kitchen Cabinets  
2435 Hardwood Veneer and Plywood  
2436 Softwood Veneer and Plywood  
2439 Structural Wood Members, n.e.c.  
2441 Nailed and Lock Corner Wood Boxes and Shook  
2448 Wood Pallets and Skids  
2449 Wood Containers, n.e.c.  
2451 Mobile Homes  
2452 Prefabricated Wood Buildings  
2491 Wood Preserving  
2493 Reconstituted Wood Products  
2499 Wood Products, n.e.c.

Code Title

-----  
25 FURNITURE AND FIXTURES  
2511 Wood Household Furniture  
2512 Upholstered Household Furniture  
2514 Metal Household Furniture  
2515 Mattresses and Bedsprings  
2517 Wood TV and Radio Cabinets  
2519 Household Furniture, n.e.c.  
2521 Wood Office Furniture  
2522 Metal Office Furniture  
2531 Public Building and Related Furniture  
2541 Wood Partitions and Fixtures  
2542 Metal Partitions and Fixtures  
2591 Drapery Hardware, Blinds, and Shades  
2599 Furniture and Fixtures, n.e.c.  
26 PAPER AND ALLIED PRODUCTS  
2611 Pulp Mills  
2621 Paper Mills, Except Building Paper  
2631 Paperboard Mills  
2652 Set-Up Paperboard Boxes  
2653 Corrugated and Solid Fiber Boxes  
2655 Fiber Cans, Drums, and Similar Products  
2656 Sanitary Food Containers  
2657 Folding Paperboard Boxes  
2671 Paper, Coated and Laminated: Packaging  
2672 Paper, Coated and Laminated: n.e.c.  
2673 Bags: Plastics, Laminated, and Coated  
2674 Bags, Uncoated Paper and Multiwall  
2675 Die-Cut Paper and Board  
2676 Sanitary Paper Products  
2677 Envelopes  
2678 Stationery Products  
2679 Converted Paper Products, n.e.c.  
27 PRINTING AND PUBLISHING  
2711 Newspapers  
2721 Periodicals  
2731 Book Publishing  
2732 Book Printing  
2741 Miscellaneous Publishing  
2752 Commercial Printing, Lithographic  
2754 Commercial Printing, Gravure  
2759 Commercial Printing, n.e.c.  
2761 Manifold Business Forms  
2771 Greeting Card Publishing  
2782 Blankbooks and Looseleaf Binders  
2789 Bookbinding and Related Work  
2791 Typesetting  
2796 Platemaking Services

Code Title

-----  
28 CHEMICALS AND ALLIED PRODUCTS  
2812 Alkalies and Chlorine  
2813 Industrial Gases  
2816 Inorganic Pigments  
2819 Industrial Inorganic Chemicals, n.e.c.  
2821 Plastics Materials and Resins  
2822 Synthetic Rubber  
2823 Cellulosic Manmade Fibers  
2824 Organic Fibers, Noncellulosic  
2833 Medicinals and Botanicals  
2834 Pharmaceutical Preparations  
2835 Diagnostic Substances  
2836 Biological Products Except Diagnostic  
2841 Soap and Other Detergents  
2842 Polishes and Sanitation Goods  
2843 Surface Active Agents  
2844 Toilet Preparations  
2851 Paints and Allied Products  
2861 Gum and Wood Chemicals  
2865 Cyclic Crude and Intermediates  
2869 Industrial Organic Chemicals, n.e.c.  
2873 Nitrogenous Fertilizers  
2874 Phosphatic Fertilizers  
2875 Fertilizers, Mixing Only  
2879 Agricultural Chemicals, n.e.c.  
2891 Adhesives and Sealants  
2892 Explosives  
2893 Printing Ink  
2895 Carbon Black  
2899 Chemical Preparations, n.e.c.  
29 PETROLEUM AND COAL PRODUCTS  
2911 Petroleum Refining  
2951 Paving Mixtures and Blocks  
2952 Asphalt Felts and Coatings  
2992 Lubricating Oils and Greases  
2999 Petroleum and Coal Products, n.e.c.



Code	Title
30	RUBBER AND MISCELLANEOUS PLASTICS PRODUCTS
3011	Tires and Inner Tubes
3021	Rubber and Plastic Footwear
3052	Rubber and Plastics Hose and Belting
3053	Gaskets, Packing and Sealing Devices
3061	Mechanical Rubber Goods
3069	Fabricated Rubber Products, n.e.c.
3081	Unsupported Plastics Film and Sheets
3082	Unsupported Plastics Profile Shapes
3083	Laminated Plastics Plate and Sheet
3084	Plastics Pipe
3085	Plastics Bottles
3086	Plastics Foam Products
3087	Custom Compound Purchased Resins
3088	Plastics Plumbing Fixtures
3089	Plastics Products, n.e.c.
31	LEATHER AND LEATHER PRODUCTS
3111	Leather Tanning and Finishing
3131	Boot and Shoe Cut Stock and Findings
3142	House Slippers
3143	Men's Footwear, Except Athletic
3144	Women's Footwear, Except Athletic
3149	Footwear, Except Rubber, n.e.c.
3151	Leather Gloves and Mittens
3161	Luggage
3171	Women's Handbags and Purses
3172	Personal Leather Goods, n.e.c.
3199	Leather Goods, n.e.c.
32	STONE, CLAY, AND GLASS PRODUCTS
3211	Flat Glass
3221	Glass Containers
3229	Pressed and Blown Glass, n.e.c.
3231	Products of Purchased Glass
3241	Cement, Hydraulic
3251	Brick and Structural Clay Tile
3253	Ceramic Wall and Floor Tile
3255	Clay Refractories
3259	Structural Clay Products, n.e.c.
3261	Vitreous Plumbing Fixtures
3262	Vitreous China Food Utensils
3263	Fine Earthenware Food Utensils
3264	Porcelain Electrical Supplies
3269	Pottery Products, n.e.c.
3271	Concrete Brick and Block
3272	Concrete Products, n.e.c.
3273	Ready-Mixed Concrete
3274	Lime
3275	Gypsum Products

3281 Cut Stone and Stone Products  
3291 Abrasive Products  
3292 Asbestos Products  
3295 Minerals, Ground or Treated  
3296 Mineral Wool  
3297 Nonclay Refractories  
3299 Nonmetallic Mineral Products, n.e.c.  
33 PRIMARY METAL INDUSTRIES  
3312 Blast Furnaces and Steel Mills  
3313 Electrometallurgical Products  
3315 Steel Wire and Related Products  
3316 Cold Finishing of Steel Shapes  
3317 Steel Pipe and Tubes  
3321 Gray Iron Foundries  
3322 Malleable Iron Foundries  
3324 Steel Investment Foundries  
3325 Steel Foundries, n.e.c.  
3331 Primary Copper  
3334 Primary Aluminum  
3339 Primary Nonferrous Metals, n.e.c.  
3341 Secondary Nonferrous Metals  
3351 Copper Rolling and Drawing  
3353 Aluminum Sheet, Plate, and Foil  
3354 Aluminum Extruded Products  
3355 Aluminum Rolling and Drawing, n.e.c.  
3356 Nonferrous Rolling and Drawing, n.e.c.  
3357 Nonferrous Wire Drawing and Insulating  
3363 Aluminum Die-Castings  
3364 Nonferrous Die-Casting Except Aluminum  
3365 Aluminum Foundries  
3366 Copper Foundries  
3369 Nonferrous Foundries, n.e.c.  
3398 Metal Heat Treating  
3399 Primary Metal Products, n.e.c.  
34 FABRICATED METAL PRODUCTS  
3411 Metal Cans  
3412 Metal Barrels, Drums, and Pails  
3421 Cutlery  
3423 Hand and Edge Tools, n.e.c.  
3425 Hand Saws and Saw Blades  
3429 Hardware, n.e.c.  
3431 Metal Sanitary Ware  
3432 Plumbing Fittings and Brass Goods  
3433 Heating Equipment, Except Electric

Code Title

-----  
3441 Fabricated Structural Metal  
3442 Metal Doors, Sash, and Trim  
3443 Fabricated Plate Work, Boiler Shops  
3444 Sheet Metal Work  
3446 Architectural Metal Work  
3448 Prefabricated Metal Buildings  
3449 Miscellaneous Metal Work  
3451 Screw Machine Products  
3452 Bolts, Nuts, Rivets, and Washers  
3462 Iron and Steel Forgings  
3463 Nonferrous Forgings  
3465 Automotive Stampings  
3466 Crowns and Closures  
3469 Metal Stampings, n.e.c.  
3471 Plating and Polishing  
3479 Metal Coating and Allied Services  
3482 Small Arms Ammunition  
3483 Ammunition, Except Small Arms, n.e.c.  
3484 Small Arms  
3489 Ordnance and Accessories, n.e.c.  
3491 Industrial Valves  
3492 Fluid Power Valves and Hose Fittings  
3493 Steel Springs, Except Wire  
3494 Valves and Pipe Fittings, n.e.c.  
3495 Wire Springs  
3496 Miscellaneous Fabricated Wire Products  
3497 Metal Foil and Leaf  
3498 Fabricated Pipe and Fittings  
3499 Fabricated Metal Products, n.e.c.  
35 MACHINERY, EXCEPT ELECTRICAL  
3511 Turbines and Turbine Generator Sets  
3519 Internal Combustion Engines, n.e.c.  
3523 Farm Machinery and Equipment  
3524 Lawn and Garden Equipment  
3531 Construction Machinery  
3532 Mining Machinery  
3533 Oil Field Machinery  
3534 Elevators and Moving Stairways  
3535 Conveyors and Conveying Equipment  
3536 Hoists, Cranes, and Monorails  
3537 Industrial Trucks and Tractors .

Code Title

-----  
3541 Machine Tools, Metal Cutting Types  
3542 Machine Tools, Metal Forming Types  
3543 Industrial Patterns  
3544 Special Dies, Tools, Jigs, and Fixtures  
3545 Machine Tool Accessories  
3546 Power Driven Hand Tools  
3547 Rolling Mill Machinery  
3548 Welding Apparatus  
3549 Metalworking Machinery, n.e.c.  
3552 Textile Machinery  
3553 Woodworking Machinery  
3554 Paper Industries Machinery  
3555 Printing Trades Machinery  
3556 Food Products Machinery  
3559 Special Industry Machinery, n.e.c.  
3561 Pumps and Pumping Equipment  
3562 Ball and Roller Bearings  
3563 Air and Gas Compressors  
3564 Blowers and Fans  
3565 Packaging Machinery  
3566 Speed Changers, Drives, and Gears  
3567 Industrial Furnaces and Ovens  
3568 Power Transmission Equipment, n.e.c.  
3569 General Industrial Machinery, n.e.c.  
3571 Electronic Computers  
3572 Computer Storage Devices  
3575 Computer Terminals  
3577 Computer Peripheral Equipment, n.e.c.  
3578 Calculating and Accounting Equipment  
3579 Office Machines, n.e.c.  
3581 Automatic Merchandising Machines  
3582 Commercial Laundry Equipment  
3585 Refrigeration and Heating Equipment  
3586 Measuring and Dispensing Pumps  
3589 Service Industry Machinery, n.e.c.  
3592 Carburetors, Pistons, Rings, and Valves  
3593 Fluid Power Cylinders and Actuators  
3594 Fluid Power Pumps and Motors  
3596 Scales and Balances, Except Laboratory  
3599 Industrial Machinery, n.e.c.

Code Title

-----  
36 ELECTRICAL AND ELECTRONIC EQUIPMENT  
3612 Transformers  
3613 Switchgear and Switchboard Apparatus  
3621 Motors and Generators  
3624 Carbon and Graphite Products  
3625 Relays and Industrial Controls  
3629 Electrical Industrial Apparatus, n.e.c.  
3631 Household Cooking Equipment  
3632 Household Refrigerators and Freezers  
3633 Household Laundry Equipment  
3634 Electric Housewares and Fans  
3635 Household Vacuum Cleaners  
3639 Household Appliances, n.e.c.  
3641 Electric Lamps  
3643 Current-Carrying Wiring Devices  
3644 Noncurrent-Carrying Wiring Devices  
3645 Residential Lighting Fixtures  
3646 Commercial Lighting Fixtures  
3647 Vehicular Lighting Equipment  
3648 Lighting Equipment, n.e.c.  
3651 Household Audio and Video Equipment  
3652 Prerecorded Records and Tapes  
3661 Telephone and Telegraph Apparatus  
3663 Radio and TV Communications Equipment  
3669 Communications Equipment, n.e.c.  
3671 Electron Tubes  
3672 Printed Circuit Boards  
3674 Semiconductors and Related Devices  
3675 Electronic Capacitors  
3676 Electronic Resistors  
3677 Electronic Coils and Transformers  
3678 Electronic Connectors  
3679 Electronic Components, n.e.c.  
3691 Storage Batteries  
3692 Primary Batteries, Dry and Wet  
3694 Engine Electrical Equipment  
3695 Magnetic and Optical Recording Media  
3699 Electrical Equipment and Supplies, n.e.c.

Code Title

-----  
37 TRANSPORTATION EQUIPMENT  
3711 Motor Vehicles and Car Bodies  
3713 Truck and Bus Bodies  
3714 Motor Vehicle Parts and Accessories  
3715 Truck Trailers  
3716 Motor Homes  
3721 Aircraft  
3724 Aircraft Engines and Engine Parts  
3728 Aircraft Parts and Equipment, n.e.c.  
3731 Ship Building and Repairing  
3732 Boat Building and Repairing  
3743 Railroad Equipment  
3751 Motorcycles, Bicycles, and Parts  
3761 Guided Missiles and Space Vehicles  
3764 Space Propulsion Units and Parts  
3769 Space Vehicle Equipment, n.e.c.  
3792 Travel Trailer and Campers  
3795 Tanks and Tank Components  
3799 Transportation Equipment, n.e.c.  
38 INSTRUMENTS AND RELATED PRODUCTS  
3812 Search and Navigation Equipment  
3821 Laboratory Apparatus and Furniture  
3822 Environmental Controls  
3823 Process Control Instruments  
3824 Fluid Meters and Counting Devices  
3825 Instruments to Measure Electricity  
3826 Analytical Instruments  
3827 Optical Instruments and Lenses  
3829 Measuring and Controlling Devices, n.e.c.  
3841 Surgical and Medical Instruments  
3842 Surgical Appliances and Supplies  
3843 Dental Equipment and Supplies  
3844 X-Ray Apparatus and Tubes  
3845 Electromedical Equipment  
3851 Ophthalmic Goods  
3861 Photographic Equipment and Supplies  
3873 Watches, Clocks, and Watchcases

Code Title

-----  
39 MISCELLANEOUS MANUFACTURING INDUSTRIES  
3911 Jewelry, Precious Metal  
3914 Silverware and Plated Ware  
3915 Jewelers' Materials and Lapidary Work  
3931 Musical Instruments  
3942 Dolls  
3944 Games, Toys, and Children's Vehicles  
3949 Sporting and Athletic Goods, n.e.c.  
3951 Pens and Mechanical Pencils  
3952 Lead Pencils and Art Goods  
3953 Marking Devices  
3955 Carbon Paper and Inked Ribbons  
3961 Costume Jewelry  
3965 Fasteners, Buttons, Needles, and Pins  
3991 Brooms and Brushes  
3993 Signs and Advertising Displays  
3995 Burial Caskets  
3996 Hard Surface Floor Coverings  
3999 Manufacturing Industries, n.e.c.