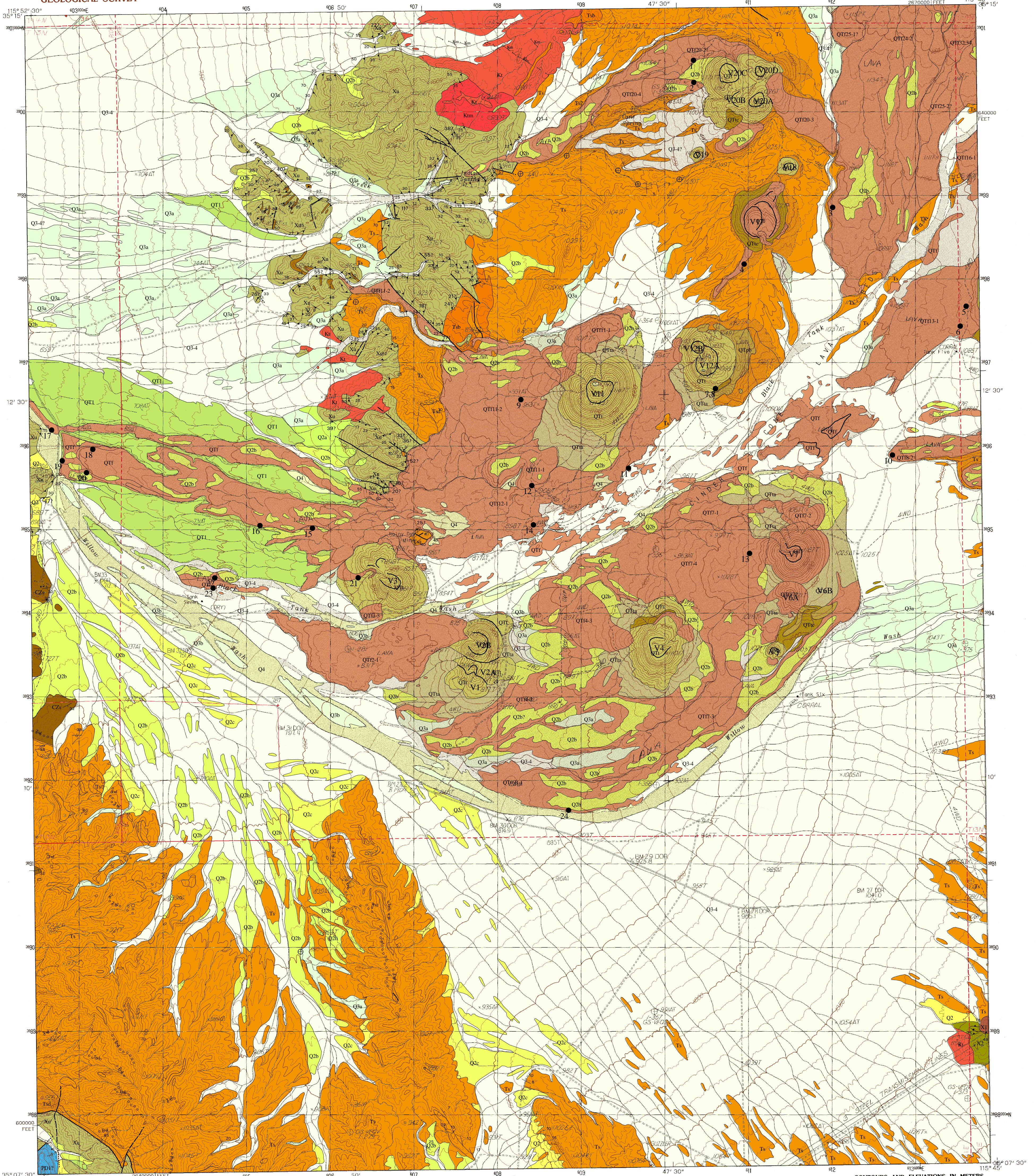


UNITED STATES
DEPARTMENT OF THE INTERIOR
GEOLOGICAL SURVEY

INDIAN SPRING QUADRANGLE
CALIFORNIA—SAN BERNARDINO CO.
7.5 MINUTE SERIES (TOPOGRAPHIC)



PRODUCED BY THE UNITED STATES GEOLOGICAL SURVEY
CONTROL BY USGS, NOS/NOAA
COMPILED FROM AERIAL PHOTOGRAPHS TAKEN 1958
FIELD CHECKED 1980. MAP EDITED 1983
PROJECTION UNIVERSAL TRANSVERSE MERCATOR
GRID 1000-METER UNIVERSAL TRANSVERSE MERCATOR, ZONE 11
10,000-FOOT STATE GRID TICKS CALIFORNIA, ZONE 5
UTM GRID DECLINATION 01° EAST
1980 MAGNETIC NORTH DECLINATION 14° EAST
VERTICAL DATUM NATIONAL GEODESIC VERTICAL DATUM OF 1929
HORIZONTAL DATUM 1927 NORTH AMERICAN DATUM
To place on the predicted North American Datum of 1983,
move the projection lines as shown by dashed corner ticks
(3 meters north / 77 meters east)
There may be private inholdings within the boundaries of any
Federal and State Reservations shown on this map
Where omitted, land lines have not been established
or are not shown because of insufficient data

PROVISIONAL MAP
Produced from original
manuscript drawings. Information
shown as of date of
field check.

SCALE 1:24 000
1 000 5 10 15 20 25 30 35 40 45 50 55 60 65 70 75 80 85 90 95 1000
KILOMETERS
1 5 10 15 20 25 30 35 40 45 50 55 60 65 70 75 80 85 90 95 1000
METERS
1 5 10 15 20 25 30 35 40 45 50 55 60 65 70 75 80 85 90 95 1000
MILES
CONTOUR INTERVAL 10 METERS
CONTROL ELEVATIONS SHOWN TO THE NEAREST 0.1 METER
OTHER ELEVATIONS SHOWN TO THE NEAREST METER
To convert meters to feet multiply by 3.2808
To convert feet to meters multiply by 0.3048
THIS MAP COMPLIES WITH NATIONAL MAP ACCURACY STANDARDS
FOR SALE BY U.S. GEOLOGICAL SURVEY, DENVER, COLORADO 80225, OR RESTON, VIRGINIA 22092

ROAD LEGEND

- Improved Road
- Unimproved Road
- Trail
- Interstate Route
- U.S. Route
- State Route

INDIAN SPRING, CALIF.
PROVISIONAL EDITION 1983
35115-B8-TM-024

1	2	3	4	5	6	7	8
1	2	3	4	5	6	7	8

ADJOINING 7.5' QUADRANGLE NAMES

Digital Version of 'Open-File Report 92-181: Geologic Map of the Indian Spring Quadrangle,
San Bernardino County, California'

Geology By

Howard G. Wilshire

GIS Database By

David R. Bedford and Teresa Coleman