

**NIH  
Research Supplements  
to  
Promote Diversity**

**Fiscal Year 2007**

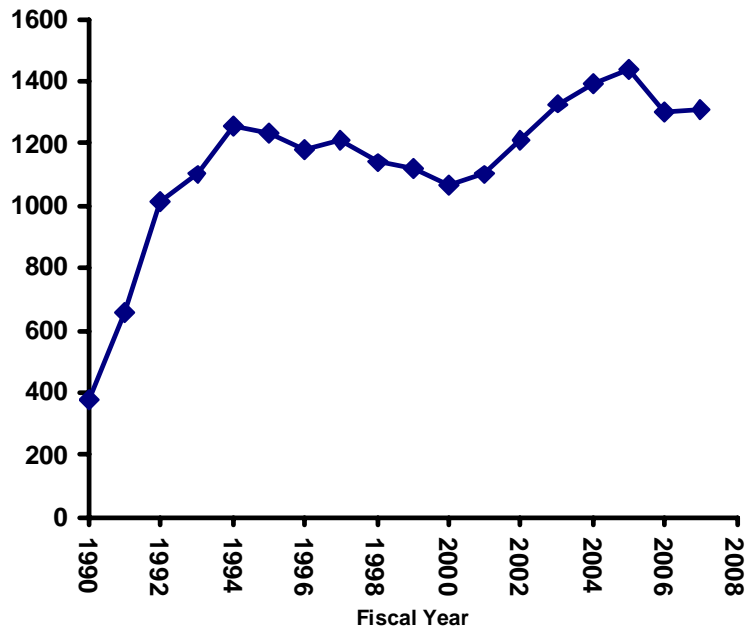
**NIH Office of Extramural Research: Prepared July 2008**

# NIH-WIDE TRENDS

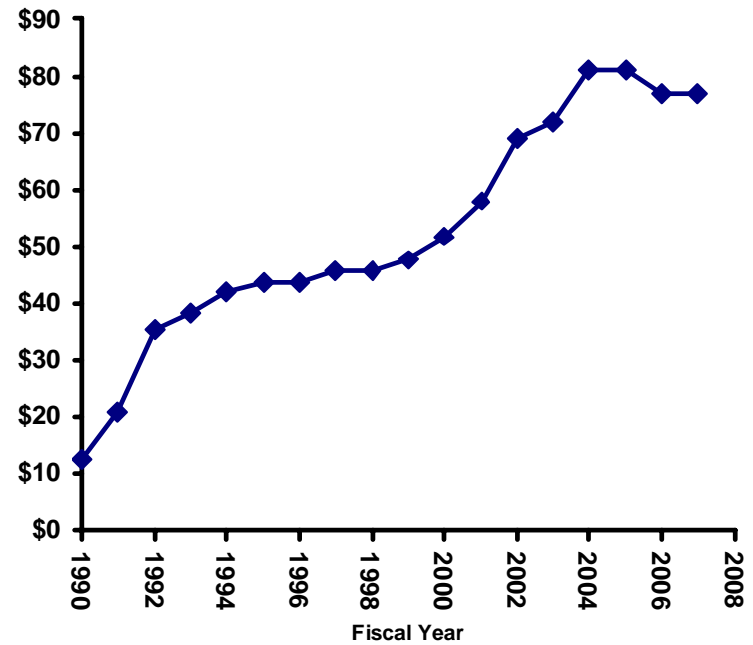
## SUPPLEMENTS TO INDIVIDUALS FROM UNDERREPRESENTED GROUPS OR DISADVANTAGED BACKGROUND

FISCAL YEARS 1990-2008

Number of Awards



Expenditures (millions)



## AWARDS FROM INSTITUTES AND CENTERS

### SUPPLEMENTS TO INDIVIDUALS FROM UNDERREPRESENTED GROUPS OR DISADVANTAGED BACKGROUND

FISCAL YEAR 2007

	New Awards		Continuing Awards		Total Awards	
	Number	Amount	Number	Amount	Number	Amount
FIC	0	\$0	1	49211	1	\$49,211
NCCAM	5	\$263,969	0	\$0	5	\$263,969
NCI	91	\$5,692,552	97	\$6,280,458	188	\$11,973,010
NCMHD	0	0	0	0	0	0
NCRR	1	\$52,300	8	\$390,930	9	\$443,230
NEI	11	\$533,326	10	\$552,508	21	\$1,085,834
NHGRI	4	\$240,171	2	\$87,806	6	\$327,977
NHLBI	86	\$5,335,289	97	\$6,204,769	183	\$11,540,058
NIA	28	\$2,198,810	24	\$1,635,692	52	\$3,834,502
NIAAA	9	\$569,890	10	\$760,264	19	\$1,330,154
NIAID	34	\$1,594,183	83	\$4,160,208	117	\$5,754,391
NIAMS	19	\$834,941 *	27	\$1,653,852	46	\$2,488,793
NIBIB	6	\$315,593	8	\$398,482	14	\$714,075
NICHHD	44	\$2,649,268	49	\$3,209,498	93	\$5,858,766
NIDA	34	\$1,782,918	36	\$1,801,098	70	\$3,584,016
NIDCD	9	\$509,294	9	\$388,403	18	\$897,697
NIDCR	11	\$548,425	2	\$91,665	13	\$640,090
NIDDK	65	\$4,169,506	36	\$2,305,460	101	\$6,474,966
NIEHS	5	\$128,118	16	\$840,467	21	\$968,585
NIGMS	131	\$6,710,955	82	\$3,238,419	213	\$9,949,374
NIMH	23	\$2,235,292	31	\$2,583,304	54	\$4,818,596
NINDS	15	\$849,967	42	\$2,453,484	57	\$3,303,451
NINR	3	\$264,737	6	\$291,477	9	\$556,214
NLM	0	\$0	0	\$0	0	\$0
<b>ALL ICs</b>	<b>634</b>	<b>\$37,479,504</b>	<b>676</b>	<b>\$39,377,455</b>	<b>1310</b>	<b>\$76,856,959</b>

\*Includes an additional award to support 8 students.

## AWARD RATE FOR NEW APPLICATIONS

### SUPPLEMENTS TO INDIVIDUALS FROM UNDERREPRESENTED GROUPS OR DISADVANTAGED BACKGROUND

FISCAL YEAR 2007\*

	Applications	New Awards	Percent Awarded
FIC	0	0	—
NCCAM	0	5	—
NCI	124	91	73%
NCMHD	0	0	—
NCRR	1	1	100%
NEI	11	11	100%
NHGRI	4	4	100%
NHLBI	95	86	91%
NIA	46	28	61%
NIAAA	12	9	75%
NIAID	84	34	40%
NIAMS	20	19	95%
NIBIB	9	6	67%
NICHD	64	44	69%
NIDA	46	34	74%
NIDCD	9	9	100%
NIDCR	11	11	100%
NIDDK	76	65	86%
NIEHS	6	5	83%
NIGMS	160	131	82%
NIMH	31	23	74%
NINDS	39	15	38%
NINR	5	3	60%
NLM	0	0	—
<b>ALL ICs</b>	<b>853</b>	<b>634</b>	<b>74%</b>

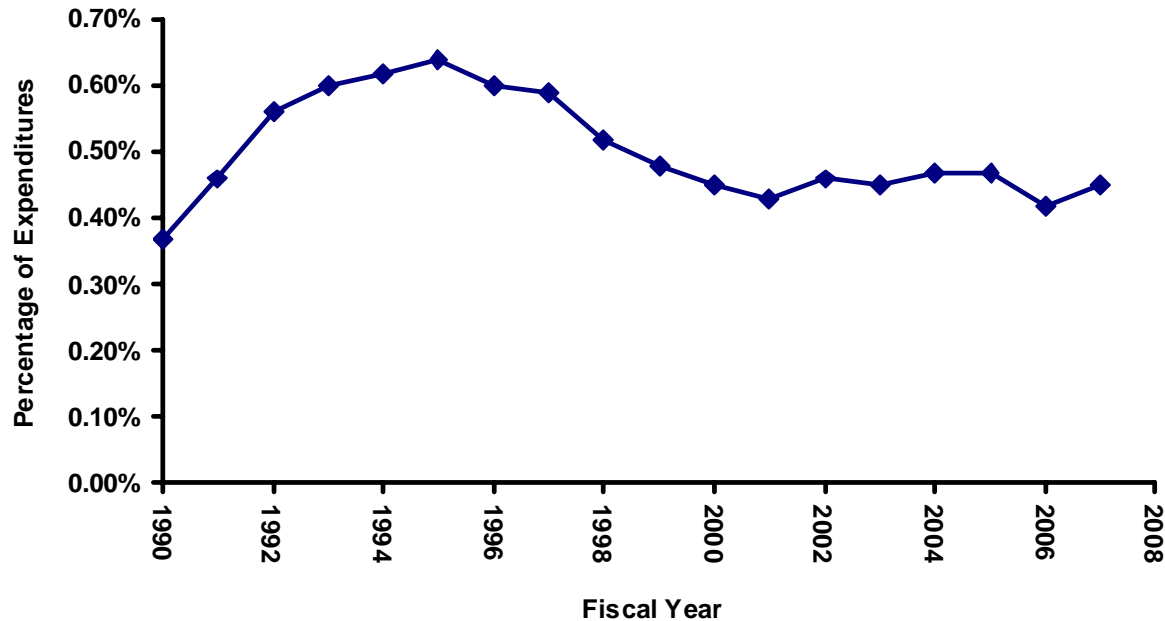
\*Unawarded applications may have been pending at the end of FY2007.

**FRACTION OF EXPENDITURES FOR ELIGIBLE RESEARCH GRANT AWARDS\***  
**SUPPLEMENTS TO INDIVIDUALS FROM UNDERREPRESENTED GROUPS**  
**OR DISADVANTAGED BACKGROUND**  
**FISCAL YEAR 2007**

	Supplement Awards	Eligible Parent Awards	Percentage
FIC	\$49,211	\$18,217,923	0.27%
NCCAM	\$263,969	\$65,013,639	0.41%
NCI	\$11,973,010	\$2,468,985,746	0.48%
NCMHD	\$0	\$93,684,319	0.00%
NCRR	\$443,230	\$519,669,884	0.09%
NEI	\$1,085,834	\$461,196,336	0.24%
NHGRI	\$327,977	\$402,838,094	0.08%
NHLBI	\$11,540,058	\$2,131,580,330	0.54%
NIA	\$3,834,502	\$701,176,536	0.55%
NIAAA	\$1,330,154	\$279,694,310	0.48%
NIAID	\$5,754,391	\$2,313,520,694	0.25%
NIAMS	\$2,488,793	\$354,139,892	0.70%
NIBIB	\$714,075	\$219,811,262	0.32%
NICHD	\$5,858,766	\$753,973,167	0.78%
NIDA	\$3,584,016	\$636,737,647	0.56%
NIDCD	\$897,697	\$265,128,062	0.34%
NIDCR	\$640,090	\$230,488,517	0.28%
NIDDK	\$6,474,966	\$1,160,804,688	0.56%
NIEHS	\$968,585	\$239,197,651	0.40%
NIGMS	\$9,949,374	\$1,571,029,530	0.63%
NIMH	\$4,818,596	\$856,804,424	0.56%
NINDS	\$3,303,451	\$1,119,616,880	0.30%
NINR	\$556,214	\$87,099,446	0.64%
NLM	\$0	\$30,321,879	0.00%
<b>ALL ICs</b>	<b>\$76,856,959</b>	<b>\$16,980,730,856</b>	<b>0.45%</b>

\*Eligible grant mechanisms: R01, R10, R18, R22, R24, R35, R37, R41, R42, R43, R44, P01, P20, P30, P40, P41, P50, P51, P60, U01, U10, U19, U41, U42, U54, S06.

**NIH-WIDE TRENDS  
EXPENDITURES AS A PERCENTAGE OF  
EXPENDITURES FOR ELIGIBLE RESEARCH GRANT AWARDS\*  
SUPPLEMENTS TO INDIVIDUALS FROM UNDERREPRESENTED GROUPS  
OR DISADVANTAGED BACKGROUND  
FISCAL YEARS 1990-2007**



\* Eligible grant mechanisms: R01, R10, R18, R22, R24, R35, R37, R41, R42, R43, R44, P01, P20, P30, P40, P41, P50, P51, P60, U01, U10, U19, U41, U42, U54, S06.

# CAREER LEVELS OF INDIVIDUALS APPOINTED

## SUPPLEMENTS TO INDIVIDUALS FROM UNDERREPRESENTED GROUPS OR DISADVANTAGED BACKGROUND

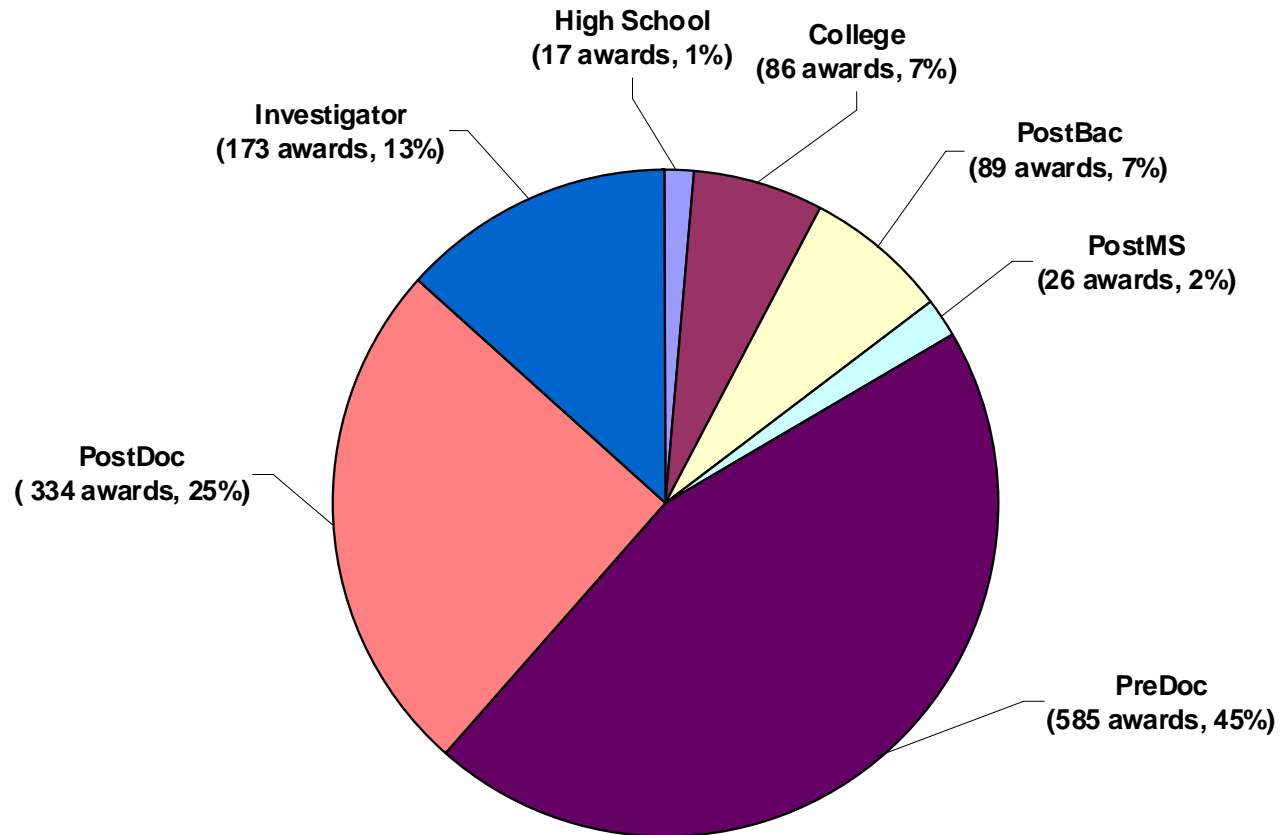
FISCAL YEAR 2007

	High School	College	PostBac	PostMS	PreDoc	PostDoc	Investigator	Total
FIC	0	0	0	0	1	0	0	1
NCCAM	0	0	0	0	4	1	0	5
NCI	2	4	7	0	103	43	29	188
NCMHD	0	0	0	0	0	0	0	0
NCRR	0	0	1	0	2	2	4	9
NEI	0	1	10	1	3	6	0	21
NHGRI	1	1	0	0	1	3	0	6
NHLBI	3	16	5	1	76	49	33	183
NIA	0	0	3	2	19	17	11	52
NIAAA	0	0	0	0	8	4	7	19
NIAID	5	12	7	2	61	23	7	117
NIAMS	1	5	4	16	6	11	3	46
NIBIB	0	0	1	0	10	2	1	14
NICHD	0	5	29	1	9	20	29	93
NIDA	0	3	0	0	39	18	10	70
NIDCD	0	2	2	0	9	5	0	18
NIDCR	0	2	2	0	3	5	1	13
NIDDK	0	5	1	0	51	27	17	101
NIEHS	0	0	0	0	14	6	1	21
NIGMS	5	24	12	0	114	54	4	213
NIMH	0	2	2	3	18	16	13	54
NINDS	0	3	2	0	30	22	0	57
NINR	0	1	1	0	4	0	3	9
NLM	0	0	0	0	0	0	0	0
<b>ALL ICs</b>	<b>17</b>	<b>86</b>	<b>89</b>	<b>26</b>	<b>585</b>	<b>334</b>	<b>173</b>	<b>1310</b>

# DISTRIBUTION OF AWARDS BY CAREER LEVEL

## SUPPLEMENTS TO INDIVIDUALS FROM UNDERREPRESENTED GROUPS OR DISADVANTAGED BACKGROUND

FISCAL YEAR 2007

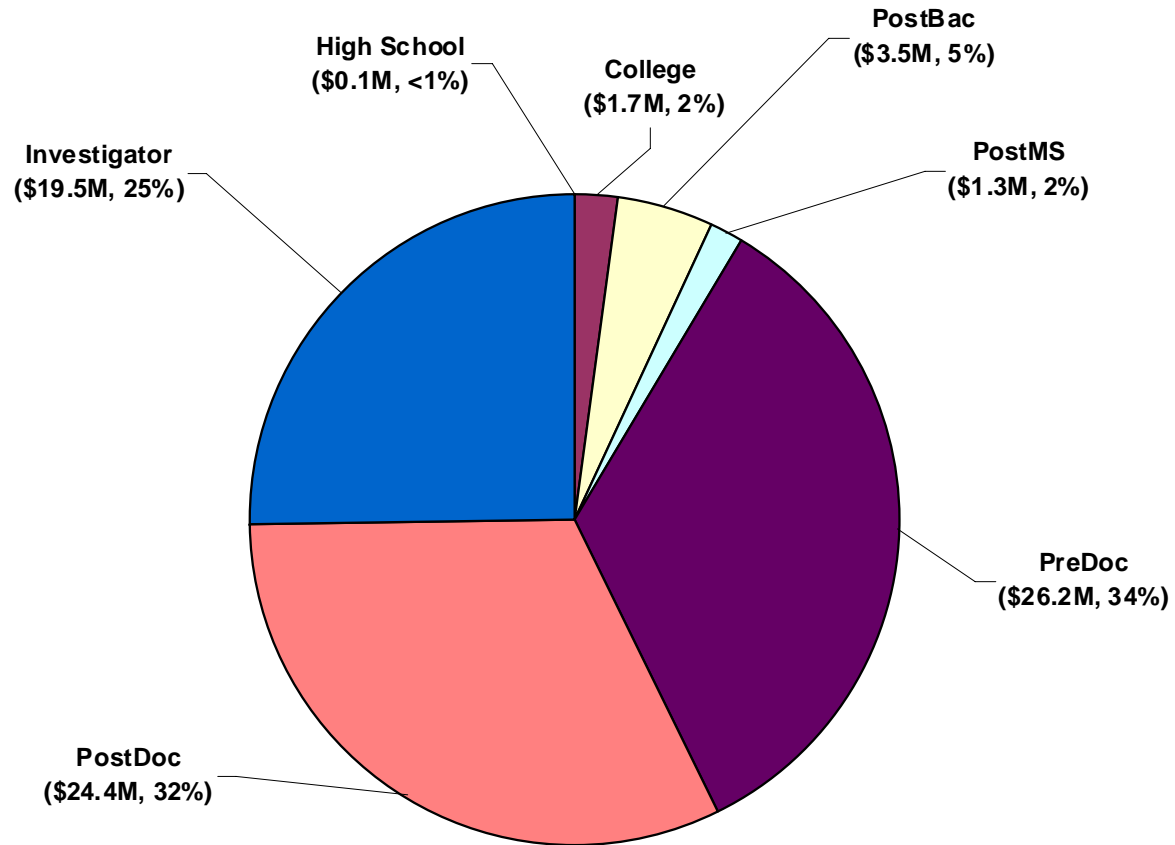




# DISTRIBUTION OF EXPENDITURES BY CAREER LEVEL

## SUPPLEMENTS TO INDIVIDUALS FROM UNDERREPRESENTED GROUPS OR DISADVANTAGED BACKGROUND

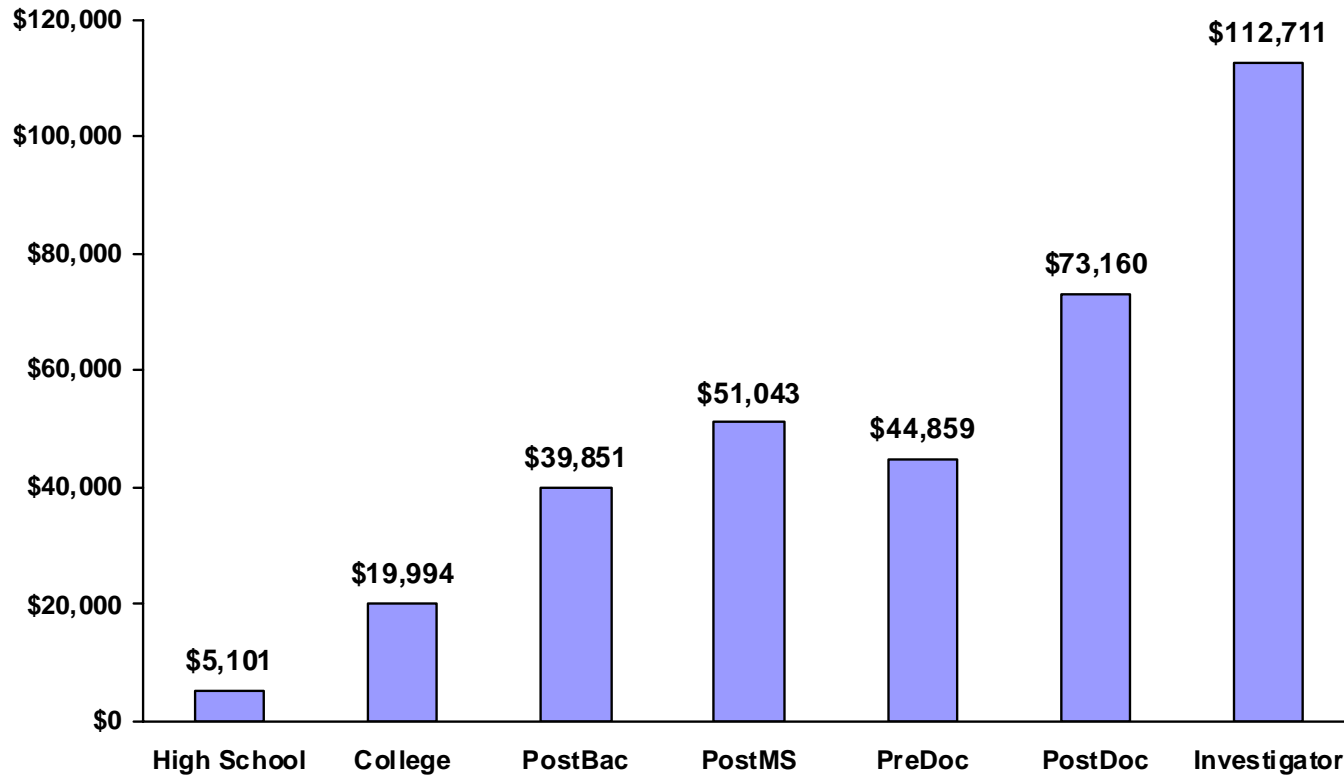
FISCAL YEAR 2007



# AVERAGE AWARD SIZE

## SUPPLEMENTS TO INDIVIDUALS FROM UNDERREPRESENTED GROUPS OR DISADVANTAGED BACKGROUND

FISCAL YEAR 2007



**DISTRIBUTION OF AWARDS BY GROUP**  
**SUPPLEMENTS TO INDIVIDUALS FROM UNDERREPRESENTED GROUPS**  
**OR DISADVANTAGED BACKGROUND**

**FISCAL YEAR 2007**

	Black	Hispanic	Native American	Pacific Islander	Other	Dis- advantaged	All Groups
FIC	0	1	0	0	0	0	1
NCCAM	5	0	0	0	0	0	5
NCI	98	75	2	8	4	1	188
NCMHD	0	0	0	0	0	0	0
NCRR	1	7	0	0	1	0	9
NEI	12	9	0	0	0	0	21
NHGRI	3	1	2	0	0	0	6
NHLBI	112	55	10	3	3	0	183
NIA	19	24	1	0	8	0	52
NIAAA	12	3	1	2	1	0	19
NIAID	46	64	2	0	5	0	117
NIAMS	23	22	0	0	1	0	46
NIBIB	9	4	0	1	0	0	14
NICHD	45	37	2	1	8	0	93
NIDA	37	25	0	2	6	0	70
NIDCD	6	10	1	1	0	0	18
NIDCR	7	4	0	0	1	1	13
NIDDK	54	45	1	1	0	0	101
NIEHS	5	8	1	0	7	0	21
NIGMS	89	100	12	11	0	1	213
NIMH	25	19	4	1	5	0	54
NINDS	22	25	3	7	0	0	57
NINR	4	4	1	0	0	0	9
NLM	0	0	0	0	0	0	0
<b>ALL ICs</b>	<b>634</b>	<b>542</b>	<b>43</b>	<b>38</b>	<b>50</b>	<b>3</b>	<b>1310</b>

**DISTRIBUTION OF AWARDS BY GROUP AND CAREER LEVEL  
SUPPLEMENTS TO INDIVIDUALS FROM UNDERREPRESENTED GROUPS  
OR DISADVANTAGED BACKGROUND**

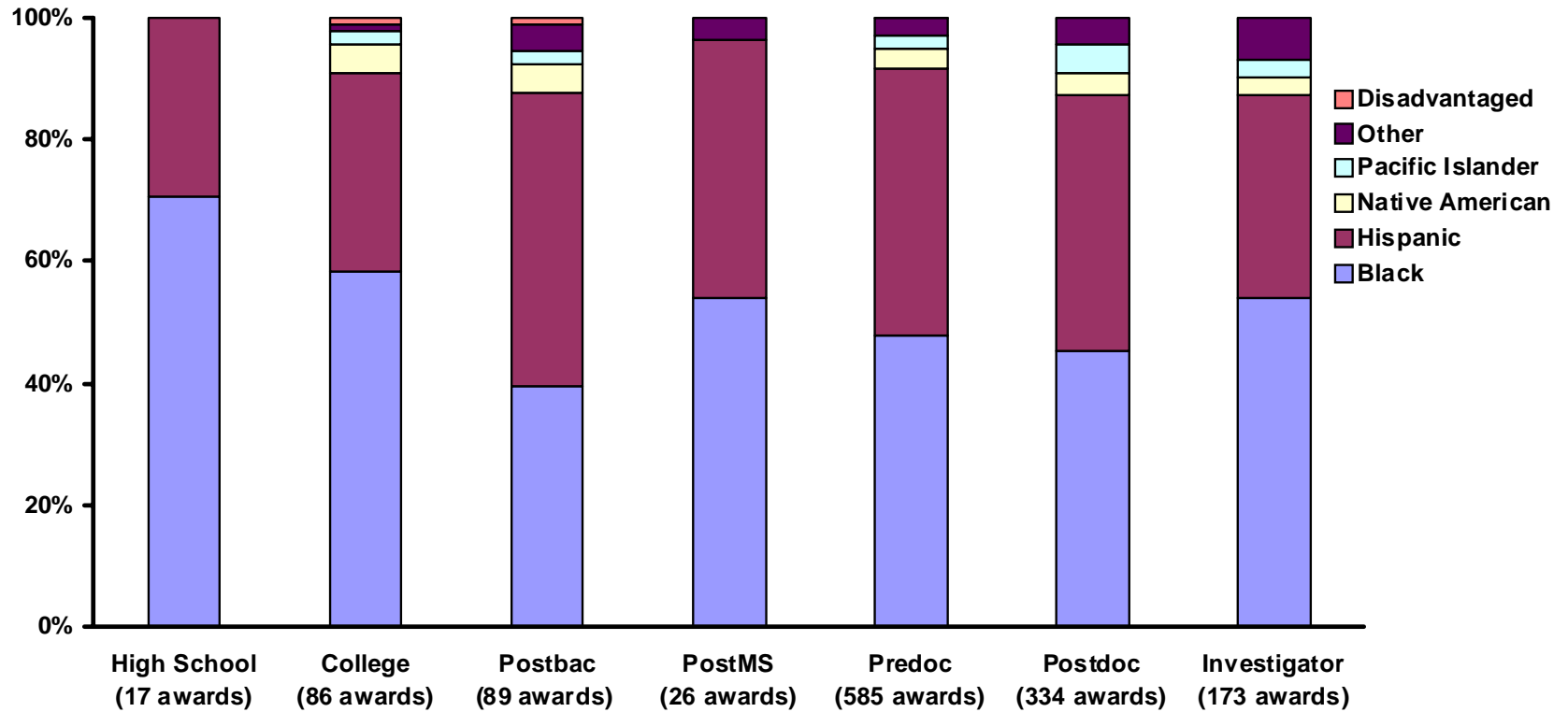
**FISCAL YEAR 2007**

	High School	College	Postbac	PostMS	Predoc	Postdoc	Investigator	All Levels
<b>Black</b>	12	50	35	14	279	151	93	634
<b>Hispanic</b>	5	28	43	11	257	140	58	542
<b>Native American</b>	0	4	4	0	18	12	5	43
<b>Pacific Islander</b>	0	2	2	0	13	16	5	38
<b>Other Ethnic</b>	0	1	4	1	17	15	12	50
<b>Disadvantaged</b>	0	1	1	0	1	0	0	3
<b>All Groups</b>	17	86	89	26	585	334	173	1310

# AWARDS BY CAREER LEVEL

## SUPPLEMENTS TO INDIVIDUALS FROM UNDERREPRESENTED GROUPS OR DISADVANTAGED BACKGROUND

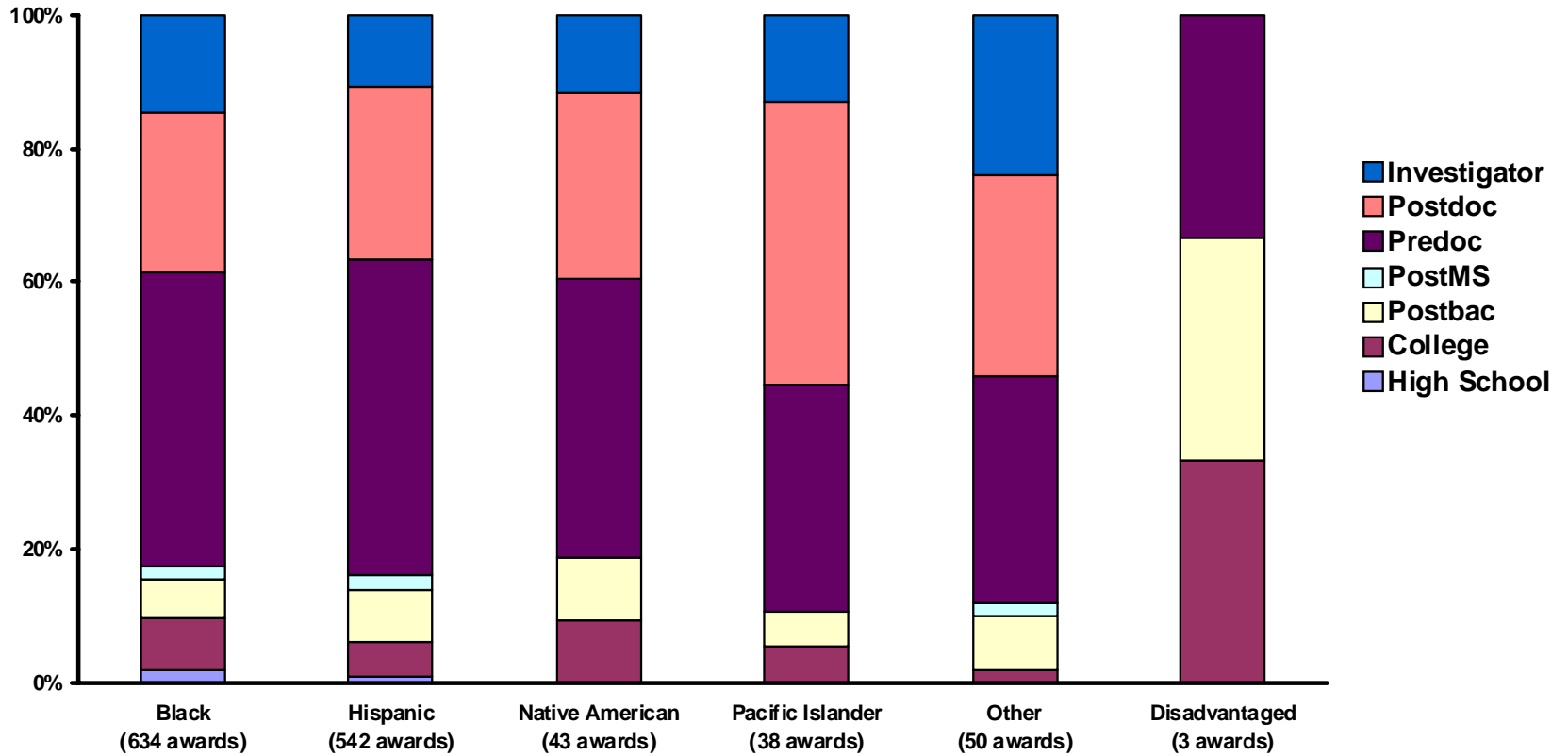
FISCAL YEAR 2007



# AWARDS BY GROUP

## SUPPLEMENTS TO INDIVIDUALS FROM UNDERREPRESENTED GROUPS OR DISADVANTAGED BACKGROUND

FISCAL YEAR 2007

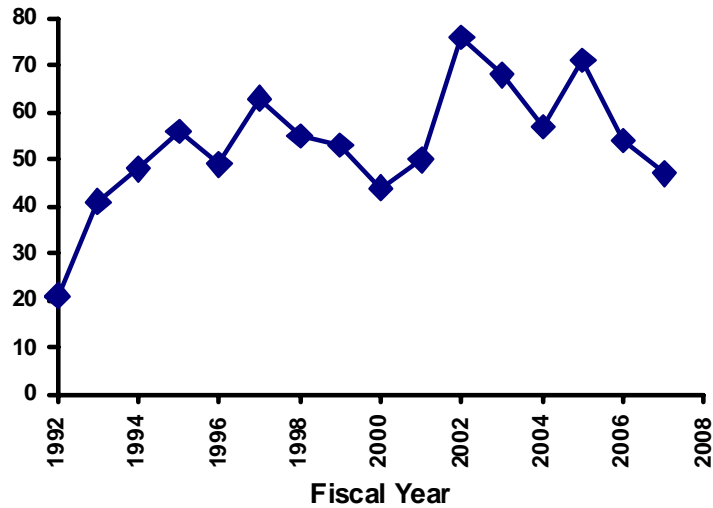


# NIH-WIDE TRENDS

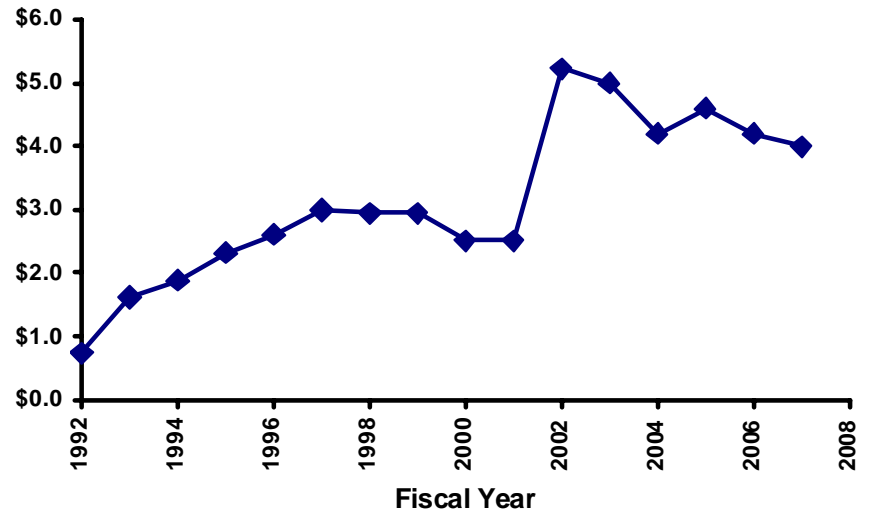
## SUPPLEMENTS TO INDIVIDUALS WITH DISABILITIES

FISCAL YEARS 1992-2007

Number of Awards



Expenditure (millions)



## AWARDS FROM INSTITUTES AND CENTERS

### SUPPLEMENTS TO INDIVIDUALS WITH DISABILITIES

FISCAL YEAR 2007

	New Awards		Continuing Awards		All Awards	
	Number	Amount	Number	Amount	Number	Amount
FIC	0	\$0	0	\$0	0	\$0
NCCAM	0	\$0	0	\$0	0	\$0
NCI	3	\$195,846	4	\$409,016	7	\$604,862
NCMHD	0	\$0	0	\$0	0	\$0
NCRR	0	\$0	1	\$28,030	1	\$28,030
NEI	2	\$80,753	1	\$118,385	3	\$199,138
NHGRI	0	\$0	0	\$0	0	\$0
NHLBI	2	\$214,191	1	\$39,301	3	\$253,492
NIA	2	\$130,173	1	\$37,647	3	\$167,820
NIAAA	0	\$0	2	\$210,097	2	\$210,097
NIAID	0	\$0	0	\$0	0	\$0
NIAMS	0	\$0	1	\$60,468	1	\$60,468
NIBIB	2	\$70,958	0	\$0	2	\$70,958
NICHD	0	\$0	3	\$931,350	3	\$931,350
NIDA	1	\$40,323	0	\$0	1	\$40,323
NIDCD	1	\$91,456	4	\$183,231	5	\$274,687
NIDCR	1	\$49,965	0	\$0	1	\$49,965
NIDDK	1	\$76,740	0	\$0	1	\$76,740
NIEHS	0	\$0	0	\$0	0	\$0
NIGMS	2	\$72,192	2	\$57,541	4	\$129,733
NIMH	2	\$274,613	2	\$85,808	4	\$360,421
NINDS	1	\$41,930	5	\$470,990	6	\$512,920
NINR	0	\$0	0	\$0	0	\$0
NLM	0	\$0	0	\$0	0	\$0
<b>All ICs</b>	<b>20</b>	<b>\$1,339,140</b>	<b>27</b>	<b>\$2,631,864</b>	<b>47</b>	<b>\$3,971,004</b>



**AWARD RATE FOR NEW APPLICATIONS**  
**SUPPLEMENTS TO INDIVIDUALS WITH DISABILITIES**  
**FISCAL YEAR 2007\***

	Applications	New Awards	Percent Awarded
FIC	0	0	—
NCCAM	0	0	—
NCI	3	3	100%
NCMHD	0	0	—
NCRR	1	0	—
NEI	2	2	100%
NHGR1	0	0	—
NHLBI	3	2	67%
NIA	4	2	50%
NIAAA	0	0	—
NIAID	1	0	0%
NIAMS	0	0	—
NIBIB	2	2	100%
NICHD	0	0	—
NIDA	1	1	100%
NIDCD	1	1	100%
NIDCR	1	1	100%
NIDDK	1	1	100%
NIEHS	0	0	—
NIGMS	2	2	100%
NIMH	2	2	100%
NINDS	1	1	100%
NINR	0	0	—
NLM	0	0	—
<b>ALL ICs</b>	<b>25</b>	<b>20</b>	<b>80%</b>

\*Unawarded applications may have been pending at the end of the fiscal year.

## TYPES OF DISABILITY AT SPECIFIC CAREER LEVELS

### SUPPLEMENTS TO INDIVIDUALS WITH DISABILITIES

FISCAL YEAR 2007

	High School	College	Postbac	Post MS	Predoc	Postdoc	Investigator	All awards
Speech Impairment	0	0	0	0	0	0	1	1
Hearing Impairment	0	0	1	0	4	4	1	10
Vision Impairment	0	0	2	0	2	2	0	6
Missing Extremities	0	0	0	0	1	0	0	1
Ortho Impairments	0	0	1	0	3	1	4	9
Partial Paralysis	0	0	0	0	3	0	2	5
Complete Paralysis	0	0	0	0	0	0	0	0
Other Impairments	0	0	1	0	8	4	2	15
<b>All Conditions</b>	<b>0</b>	<b>0</b>	<b>5</b>	<b>0</b>	<b>21</b>	<b>11</b>	<b>10</b>	<b>47</b>

**CAREER LEVELS OF INDIVIDUALS APPOINTED**

**SUPPLEMENTS TO INDIVIDUALS WITH DISABILITIES**

**FY 2007**

