

# WHISKEYTOWN NATIONAL RECREATION AREA FIRE SUCCESS STORY 2002

Whiskeytown National Recreation Area Fire Management Division had a successful 2002 and continues to benefit from the increased funding to the fire program through the National Fire Plan. In 2002 Whiskeytown worked with many local, state, private, and other federal agencies to reduce hazard fuels throughout the park. This was accomplished through shaded fuelbreak construction, mechanical treatment, pile burning and prescribed fire. Fuel accomplishment acres include the treatment of 615 acres and prescribed fire at 720 acres.

## PRESCRIBED FIRE

In 2002, Whiskeytown completed the Sunshine prescribed burn. This burn consisted of 720 acres. This burn was a complex Wildland Urban Interface burn. It was located on the east boundary of the park near a community of 1000 people and about 6 air miles from the town of Redding, with 100,00 people. Included in the burn unit boundaries were an inholder's home, power lines, and a major highway.



The Sunshine burn was an interagency project to help reduce the threat of wildfire to Old Shasta and west Redding. Smoke could be seen throughout Shasta County.



Conditions were good for a low intensity burn



Aerial ignition was used to burn the interior of the burn



One year after the Sunshine burn, new growth emerges

## FIRE SAFE PROJECTS

Whiskeytown puts a high priority on protecting structures in the park. These include National Park Service structures as well as park inholders. Through agreements with property owners in the park, Whiskeytown worked toward making several properties "Fire Safe" in 2002.

The Brown's property, located on Whiskeytown's east boundary, was completed during the winter of 2002. The California Conservation Corps and Whiskeytown's Engine Crew worked together to reduce hazardous fuels along this property. Fuels were thinned, piled and burned. Ninety-two acres were treated.



Heavy fuels are evident on the Brown's property



Crews burn piles at the Brown property



Removing hazardous fuels, makes this structure defensible.

## SHADED FUELBREAKS

Whiskeytown continues to place a high priority on building and maintaining shaded fuelbreaks. Whiskeytown works with many different agencies to accomplish these shaded fuelbreaks. Many of these shaded fuelbreaks are critical Wildland Urban Interface projects because of the closeness of communities of Old Shasta, French Gulch, Igo and Redding. Of the 616 acres that were treated, 357 acres were shaded fuelbreak construction and maintenance.



Heavy fuels are evident on the Northstar fuelbreak



Firestorm crews cut and pile brush on the Northstar fuelbreak



Crews leave large trees like ponderosa to provide the shade on the fuelbreaks



The Northstar fuelbreak is in a strategic location to help protect the community of French Gulch

## MECHANICAL THINNING PROJECTS

Whiskeytown continues to experiment with the use of mechanical thinning on small areas of the park to assist with hazard fuel reduction. Techniques are being evaluated to see if machinery will be used once the compliance section of the fire Management Plan is completed. In 2002 several types of mechanical treatments were used.



Brush mower was used at a demonstration site on Southshore Drive.



After brush mower treatment



PG&E used this brush mower in the park to maintain their lines.



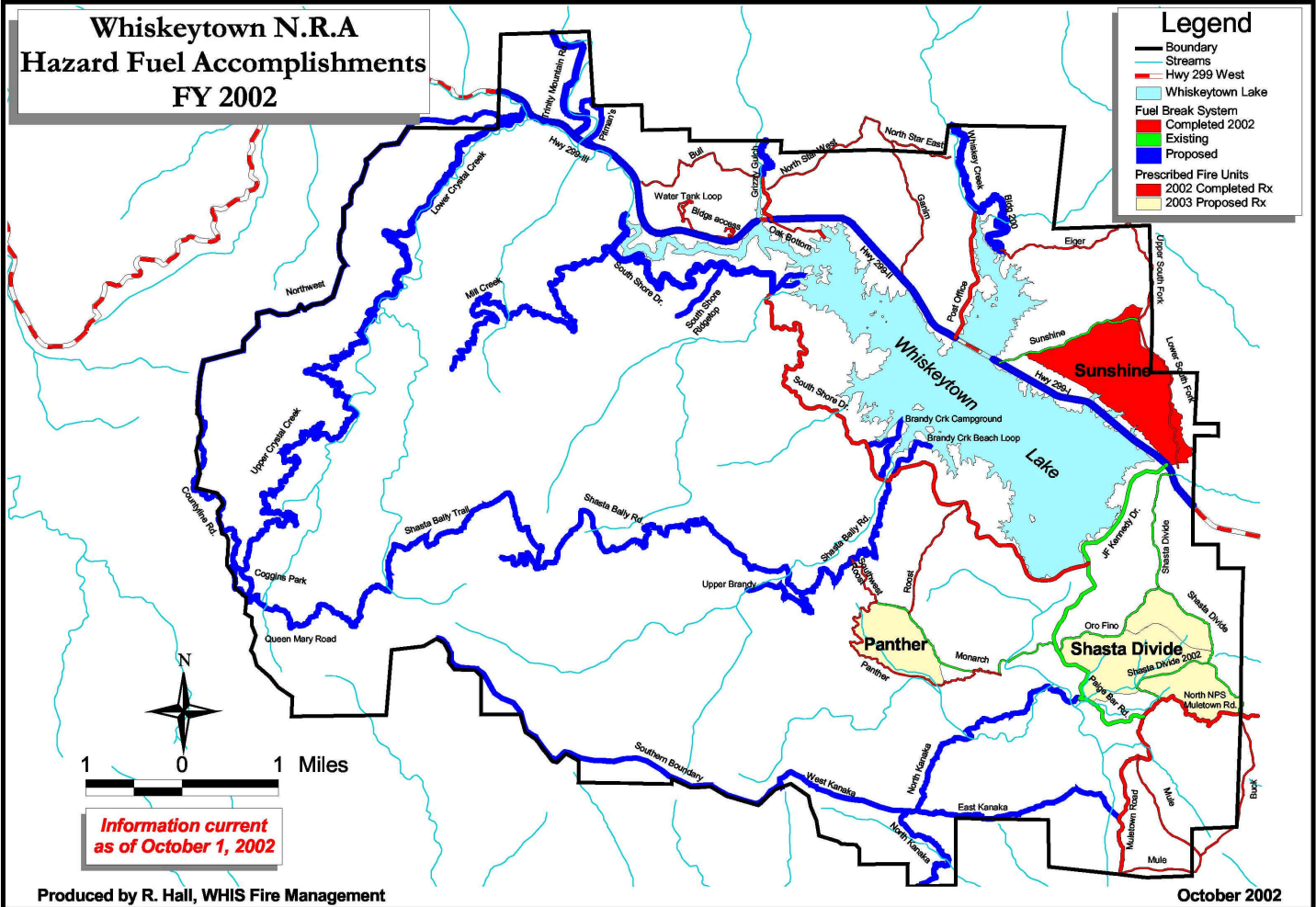
PG&E lines heading toward Old Shasta



# Whiskeytown N.R.A Hazard Fuel Accomplishments FY 2002

## Legend

- Boundary
- Streams
- Hwy 299 West
- Whiskeytown Lake
- Fuel Break System
  - Completed 2002
  - Existing
  - Proposed
- Prescribed Fire Units
  - 2002 Completed Rx
  - 2003 Proposed Rx



**Information current  
as of October 1, 2002**

Produced by R. Hall, WHIS Fire Management

October 2002

C:\NPS\_GIS\WHIS\_NAD27\Projects\fuels\_accomp\_2002.apr