



National Park Service  
Department of the Interior

Grand Teton National Park

PO Box 170  
Moose, WY 83012

February 2003

307 739-3311 phone  
307 739-3325 fax

## Grand Teton National Park Fire Management: Ske-Cology Workshop



Teton interagency personnel teamed up with Wyoming's Project Learning Tree and the Jackson Hole Mountain Resort to expand the ski area's Ske-Cology program. Grand Teton National Park and Bridger-Teton National Forest personnel assisted in a one-day workshop held at the ski resort, providing supplemental environmental education training to ski instructors. The Ske-Cology program's

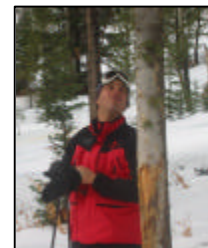
objective is to provide environmental education concepts to students during ski and snowboard lessons.



Each workshop participant received a copy of Project Learning Tree's *Environmental Education Activity Guide*. This resource guide gives ski instructors background information, multidisciplinary activities, and lesson variations to incorporate into the Ske-Cology program. Participants were led through a few of the activities.



The workshop also included a field session. Accompanying natural resource agency personnel shared information about local geology, plant life, and fire ecology as participants skied down the resort's Apres Vous Mountain. The class made a number of stops during the 2,170-foot descent to review basic tree identification and discuss the natural succession of the area.



The Ske-Cology program is used at ski resorts across the country and is modified at each resort to address local wildlife, habitat, and environmental issues. Environmental Affairs Coordinator, Bryan Foster, is working with Grand Teton National Park's Fire Education Specialist to incorporate fire ecology into Jackson Hole Mountain Resort's program. The Ske-Cology curriculum is centered around interpretive signs that give information on local animals and their habitats. Materials from the National Symbols Catalog will be used in conjunction with the panels, introducing various animals' response to fire. A display case outside the ski school lunch room at the mid-mountain Casper Restaurant will highlight local interagency fire management, outline the various methods used to manage fire and reduce fuels, and feature fire ecology materials.

