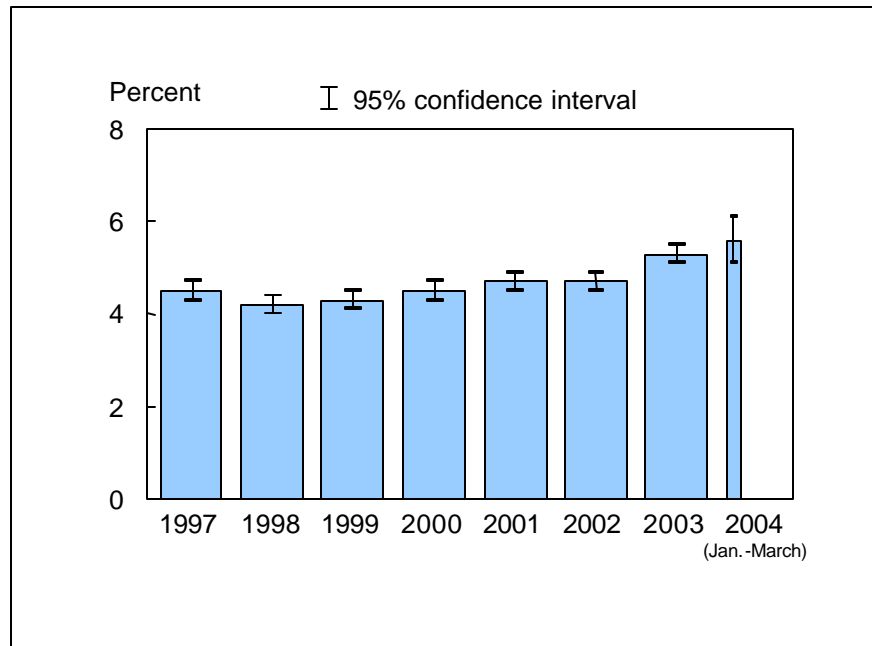


**Figure 3.1. Percent of persons of all ages who failed to obtain needed medical care due to cost at some time during the past 12 months: United States, 1997-2004**



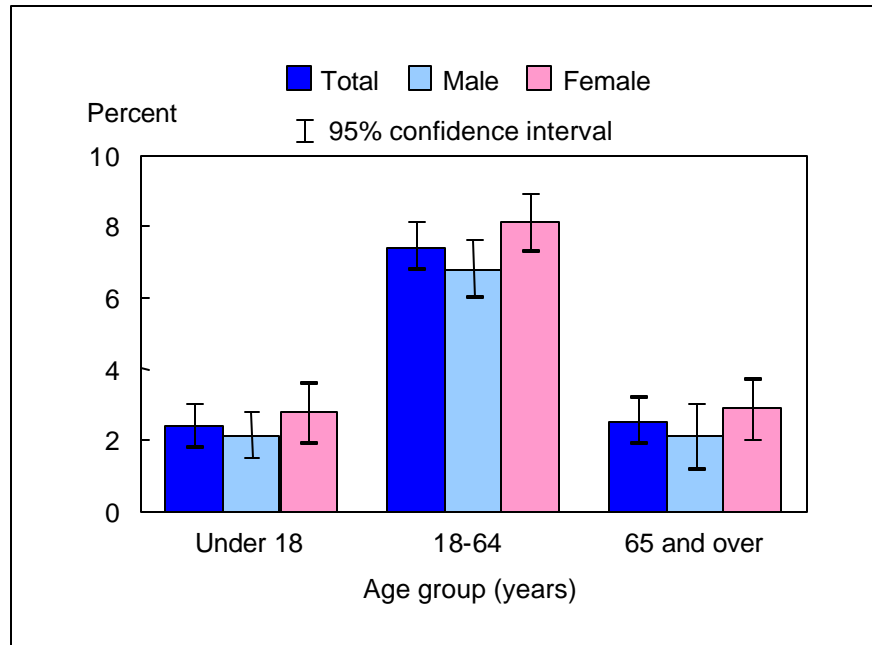
NOTES: The analyses excluded persons with unknown success in obtaining needed medical care (about 0.5% of respondents each year). CI is confidence interval. Beginning with the 2003 data, the National Health Interview Survey transitioned to weights derived from the 2000 census. In this Early Release, estimates for 2000-02 were recalculated using weights derived from the 2000 census. See "About This Release" and appendix tables in this release for more details.

DATA SOURCE: Family Core component of the 1997-2004 National Health Interview Surveys. The estimate for 2004 was based on data collected from January through March.

■ In early 2004, 5.6% (95% CI = 5.1%-6.1%) of the population was unable to obtain needed medical care due to cost at some time during the past 12 months. The estimate is slightly higher than, but not significantly different from, the 2003 estimate of 5.3%.

■ From 1998 through early 2004, an increasing trend has been observed in the percent of persons who experienced this lack of access to medical care (4.2% in 1998 to 5.6% in early 2004).

**Figure 3.2. Percent of persons of all ages who failed to obtain needed medical care due to cost at some time during the past 12 months, by age group and sex: United States, January-March 2004**



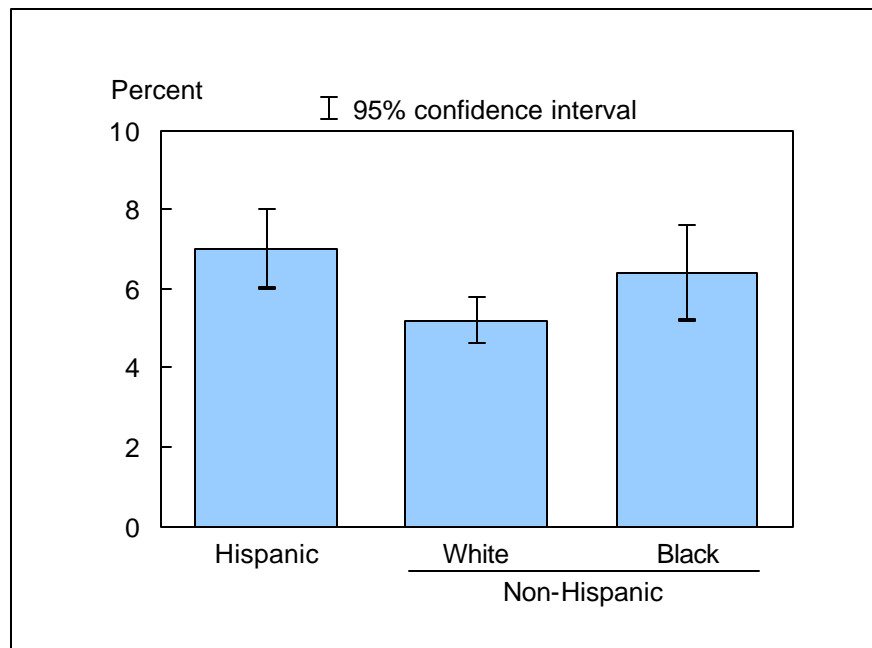
NOTE: The analyses excluded 77 persons (0.4%) with unknown success in obtaining needed medical care.

DATA SOURCE: Based on data collected from January through March in the Family Core component of the 2004 National Health Interview Survey.

■ For both sexes combined, the percent of persons who were unable to obtain needed medical care due to cost at some time during the past 12 months was 2.4% for those aged under 18 years, 7.4% for those aged 18-64 years, and 2.5% for those aged 65 years and over.

■ For adults 18-64 years, women were more likely than men to have experienced this lack of access to medical care during the past 12 months.

**Figure 3.3. Age-sex-adjusted percent of persons of all ages who failed to obtain needed medical care due to cost at some time during the past 12 months, by race/ethnicity: United States, January-March 2004**



NOTES: The analyses excluded 77 persons (0.4%) with unknown success in obtaining needed medical care. Estimates are age-sex-adjusted to the 2000 projected U.S. standard population using three age groups: under 18 years, 18-64 years, and 65 years and over.

DATA SOURCE: Based on data collected from January through March in the Family Core component of the 2004 National Health Interview Survey.

- After adjusting for age and sex, 7.0% of Hispanic persons, 5.2% of non-Hispanic white persons, and 6.4% of non-Hispanic black persons were unable to obtain needed medical care due to cost at some time during the year preceding the interview.
- Hispanic persons were more likely than non-Hispanic white persons to experience this lack of access to medical care.

## Data tables for figures 3.1-3.3:

**Data table for figure 3.1. Percent of persons of all ages who failed to obtain needed medical care due to cost at some time during the past 12 months: United States, 1997–2004**

Year	Percent	95% confidence interval
1997	4.5	4.3-4.7
1998	4.2	4.0-4.4
1999	4.3	4.1-4.5
2000	4.5	4.3-4.7
2001	4.7	4.5-4.9
2002	4.7	4.5-4.9
2003	5.3	5.1-5.5
January-March 2004	5.6	5.1-6.1

**Data table for figure 3.2. Percent of persons of all ages who failed to obtain needed medical care due to cost at some time during the past 12 months, by age group and sex, United States, January-March 2004**

Age and sex	Percent	95% confidence interval
<b>Under 18 years</b>		
Total	2.4	1.8-3.0
Male	2.1	1.5-2.8
Female	2.8	1.9-3.6
<b>18-64 years</b>		
Total	7.4	6.8-8.1
Male	6.8	6.0-7.6
Female	8.1	7.3-8.9
<b>65 years and over</b>		
Total	2.5	1.9-3.2
Male	2.1	1.2-3.0
Female	2.9	2.0-3.7
<b>All ages: Crude<sup>1</sup></b>		
Total	5.6	5.1-6.1
Male	5.1	4.5-5.6
Female	6.1	5.5-6.6
<b>All ages: Age-adjusted<sup>2</sup></b>		
Total	5.5	5.0-6.0
Male	5.0	4.4-5.5
Female	6.0	5.5-6.6

<sup>1</sup>Crude estimates are presented in the graph.

<sup>2</sup>Estimates for this Healthy People 2010 Leading Health Indicator are age-adjusted to the 2000 projected U.S. standard population using three age groups: under 18 years, 18-64 years, and 65 years and over.

**Data table for figure 3.3. Age-sex-adjusted percent of persons of all ages who failed to obtain needed medical care due to cost at some time during the past 12 months, by race/ethnicity, United States, January-March 2004**

<b>Race/ethnicity</b>	<b>Percent<sup>1</sup></b>	<b>95% confidence interval</b>
<b>Hispanic or Latino</b>	7.0	6.0-8.0
<b>Not Hispanic or Latino</b>		
<b>White, single race</b>	5.2	4.6-5.8
<b>Black, single race</b>	6.4	5.2-7.6

<sup>1</sup>Estimates are age-sex-adjusted to the 2000 projected U.S. standard population using three age groups: under 18 years, 18-64 years, and 65 years and over.