

**North Pacific Fishery Management Council
Central Gulf of Alaska Rockfish Demonstration Program
December 11, 2004**

The Council approves the following changes and additions to the referenced sections in the motion defining alternatives for analysis to establish the Central Gulf of Alaska Rockfish Demonstration Program:

1. Accept staff recommendations to delete the word “option” in Alternative 3.1
2. Select Option 2 as the preferred alternative in section 3.3.1, including the suboption.
3. Delete Option 2 in 3.3.1.2 and add the following new option 2: For the offshore sector, P.cod history will be managed by MRA using a range of 1.4 -7%.
4. Delay selection of a preferred alternative on secondary species allocations until the following data is available:

Staff is requested to add a column to table 4 which would show retained harvest of the target rockfish. The calculation methods for Option 1 and Option use retained catch/total catch. Staff is also directed to make similar calculations showing total catch/total catch, and retained catch/retained catch.

Additionally, staff is requested to prepare

- histograms depicting incidental catch rates of RE/SR and thornyhead bycatch on a set by set basis in the sablefish, halibut and P.cod longline fisheries, and
- histograms depicting incidental catch of RE/SR and thornyhead on a tow by tow basis in directed rockfish trawl fisheries.

Delete from 5.4 Alternative 2 and Alternative 3 the following option:

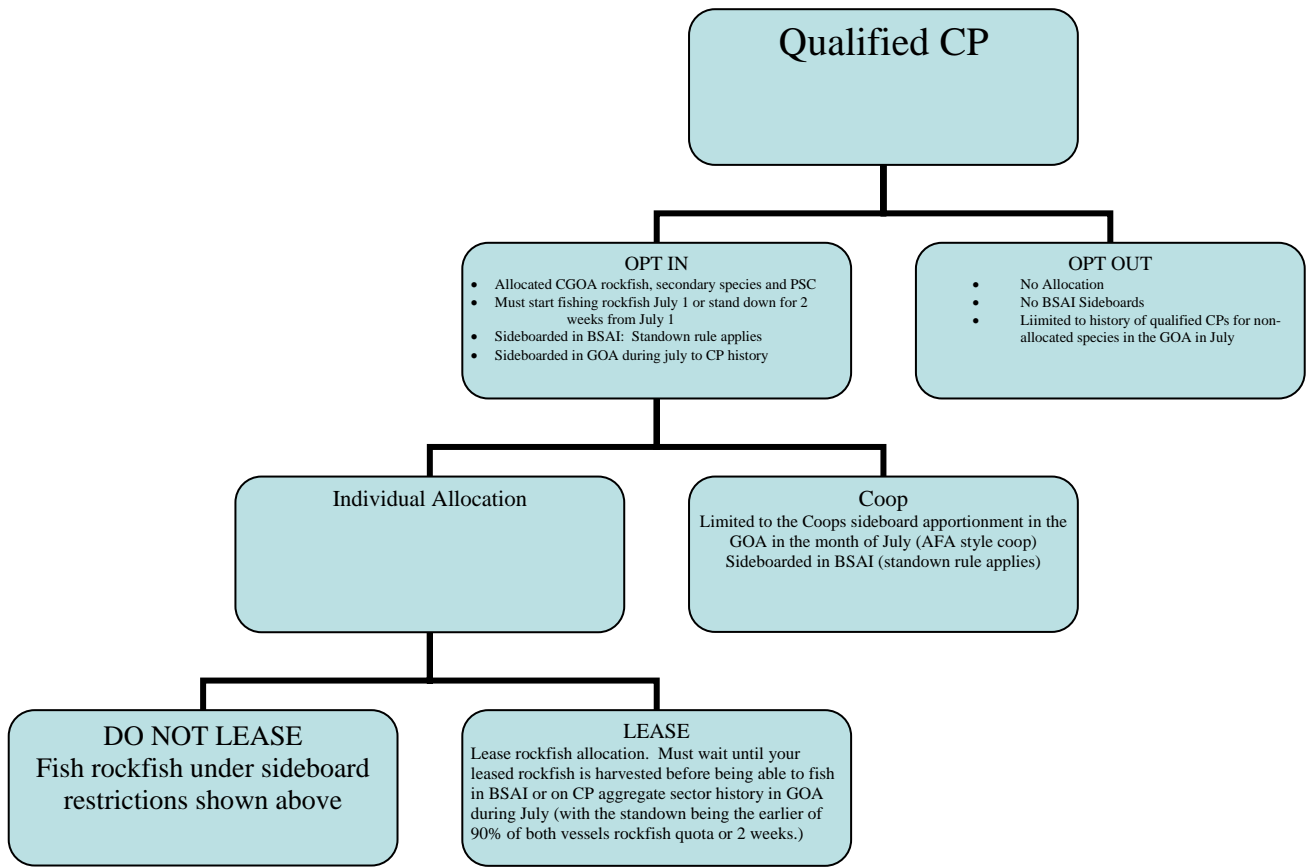
Option. When owner and operator are not affiliated, the license will be issued to the owner and operator, but the operator will receive the right to vessel coop linkages.

Under 5.4 Alternative 2 select the following option:

Catcher vessel cooperatives are required to have at least 4 eligible LLPs.

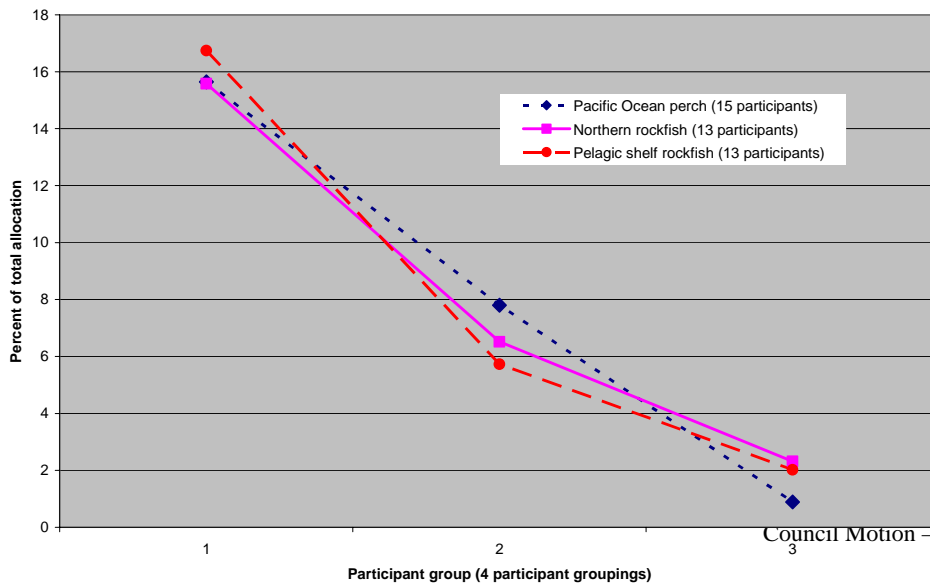
7. Add the following language to bullet 4 under Alternative 3:
 - A harvester is eligible to join a cooperative in association with the processing facility to which the harvester delivered the most pounds of the three rockfish species combined during the year's 1996 – 2000 drop 1 year (processor chooses the year to drop, same year for all LLPs). **If an LLP holder has no deliveries to a qualified processor, the LLP holder may join a coop with any one of the qualified processors.**
8. Delete CP Transfer provisions, Alternative 5.5.

Additionally,
 In section 9.2 of the Council motion:



Staff is directed to incorporate the above flowchart regarding CP sideboards into a new option in 9.2 with suboptions under the opt-out provisions that if a “serious rockfish boat” opts out they remain subject to a 2 week standown in the GOA. “Not serious” defined based on figure 1 from the rockfish decision notes: The “serious” rockfish boats are represented by the top seven vessels in Figure 1, comprising the top “tri-tile” harvest of POP. The “non-serious” rockfish vessels are included in all vessels represented by the distribution points in the center and right hand side of the graph. In addition, options 1 and 2 for the reallocation of history of opt-out vessels should be retained.

Catcher processor allocations (includes holders of permanent and interim LLP licenses)



Staff Version of Additional 9.2 Option

9.2 CP Specific Sideboard Provisions

CP vessels may decide to opt out of the CGOA pilot program on an annual basis. These CP vessels may not target POP, Northern rockfish or Pelagic Shelf rockfish in the CGOA in the years they choose to opt out. They may retain these species up to the MRA amount in other fisheries. They will be sideboarded at the sector level in the GOA as described in 9.1, but will not be subject to other sideboard restrictions within their sector, unless the vessel accounts for more than 5 percent of the allocated history in the rockfish fishery.

Option 1 -The history of CP vessels which opt out will remain with the sector.

Option 2 -The history of CP vessels which opt out will be distributed pro-rata between sectors.

Opting out is an annual decision. CP vessels which choose to opt out must so notify NMFS. The decision to opt out should not in any way alter the status of their catch history for future rationalization programs.

For the CP sector, the pilot program fishery participants must either:

- 1) start fishing in the target rockfish fisheries at the same time as the opening of the limited access fisheries (in July) and harvest 90% of their CGOA rockfish allocation prior to entering any other BSAI or GOA groundfish fishery, or
- 2) standdown for
 - Option 1. two weeks
 - Option 2. three weeksfrom the opening of the limited access fishery prior to participating in any other BSAI or GOA groundfish fishery.

A vessel which has met either standdown requirement can then move into the BSAI or GOA open access fisheries subject to the sector level limitations in the GOA in 9.1.

To the extent permitted by the motion, history may be leased between vessels that are not members of a cooperative. Each non-member of a cooperative that transfers its history to another CP or CV must still refrain from operating in any other BSAI or GOA groundfish fishery until the earlier of:

- 1) 90% of all of the CGOA rockfish allocation on the stacked vessel is harvested in the CGOA, provided fishing of the allocation began on or after the opening of the limited access fishery
- 2)
 - Option 1. two weeks
 - Option 2. three weeksfrom the opening of the limited access fishery prior to participating in any other BSAI or GOA groundfish fishery.

Members of a cooperative will be subject to all limitations and restrictions described in 9.1 and 9.2 except that cooperative members shall not be subject to any standdown in the GOA groundfish fisheries. The standdown provision in the BSAI groundfish fisheries will apply to cooperative members.

In addition to the other limitations and restrictions described above, each cooperative will be limited in the aggregate:

- a. for fisheries that close on TAC in the GOA in the month of July, to the historic average total catch of the cooperative members in the month of July during the qualification years 1996 to 2002. Fisheries that this sideboard provision would apply to include West Yakutat rockfish and WGOA rockfish, and
- b. for flatfish fisheries in the GOA that close because of halibut bycatch in the month of July, to the historic average halibut mortality taken by cooperative members in the target flatfish fisheries in the month of July by deep and shallow complex.