

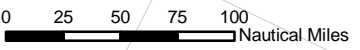
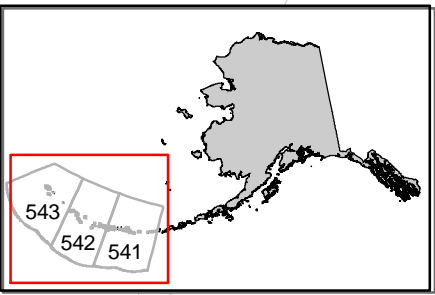
- Aleutian Islands Habitat Conservation Area
- Open to Bottom Trawling
- Aleutian Islands Coral Garden Marine Reserves
- Bowers Ridge Habitat Conservation Zone

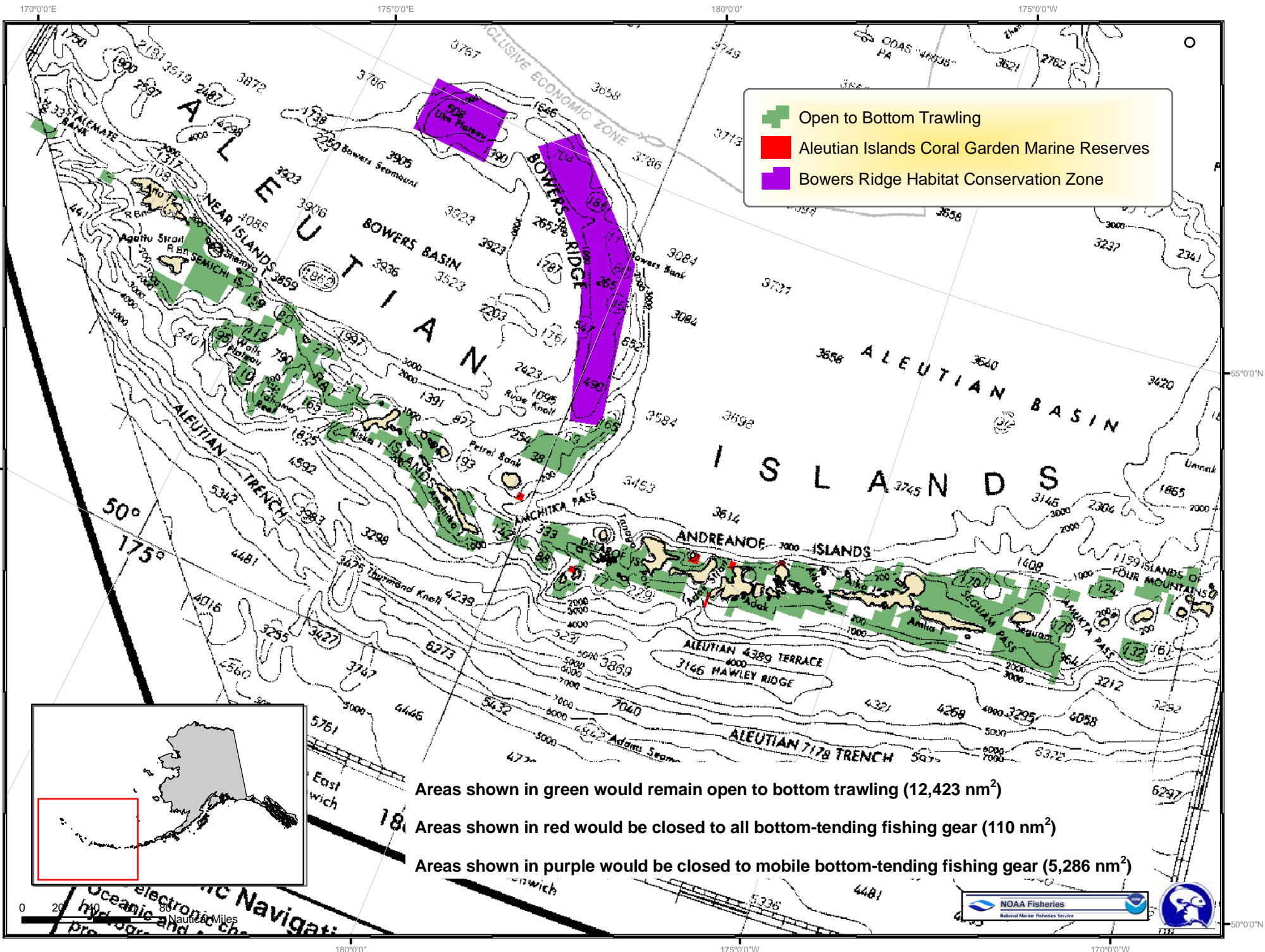
Areas shown in yellow represent the Aleutian Islands EEZ and would be closed to bottom trawling (279,114 nm²)

Areas shown in green would remain open to bottom trawling (12,423 nm²)

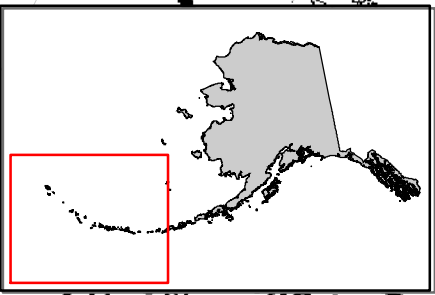
Areas shown in red would be closed to all bottom-tending fishing gear (110 nm²)

Areas shown in purple would be closed to mobile bottom-tending fishing gear (5,286 nm²)





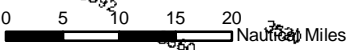
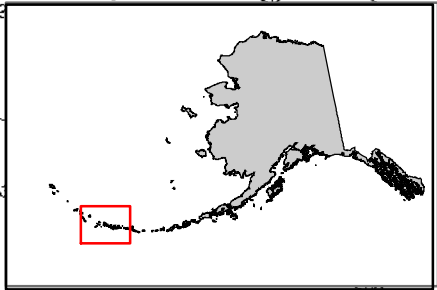
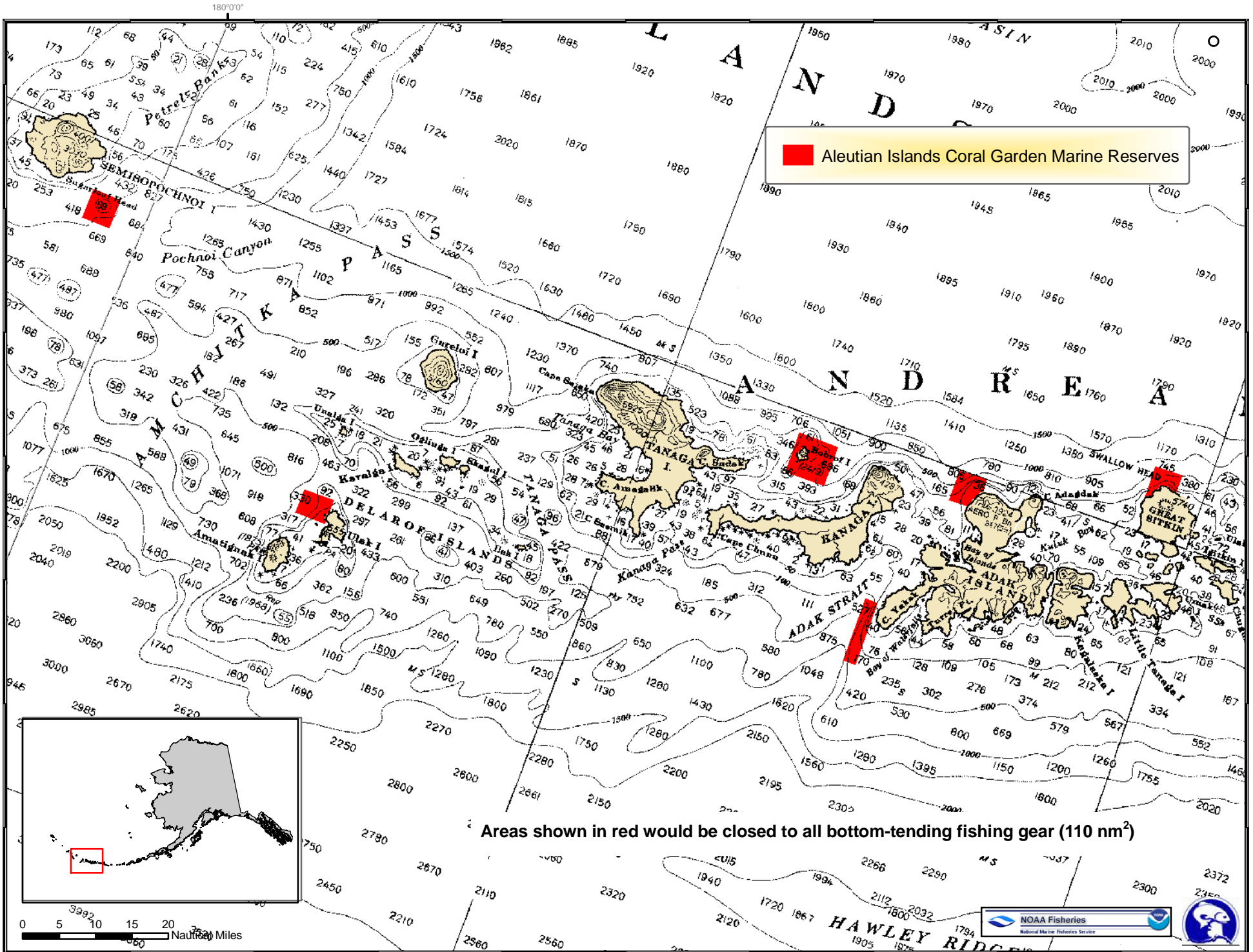
- Open to Bottom Trawling
- Aleutian Islands Coral Garden Marine Reserves
- Bowers Ridge Habitat Conservation Zone

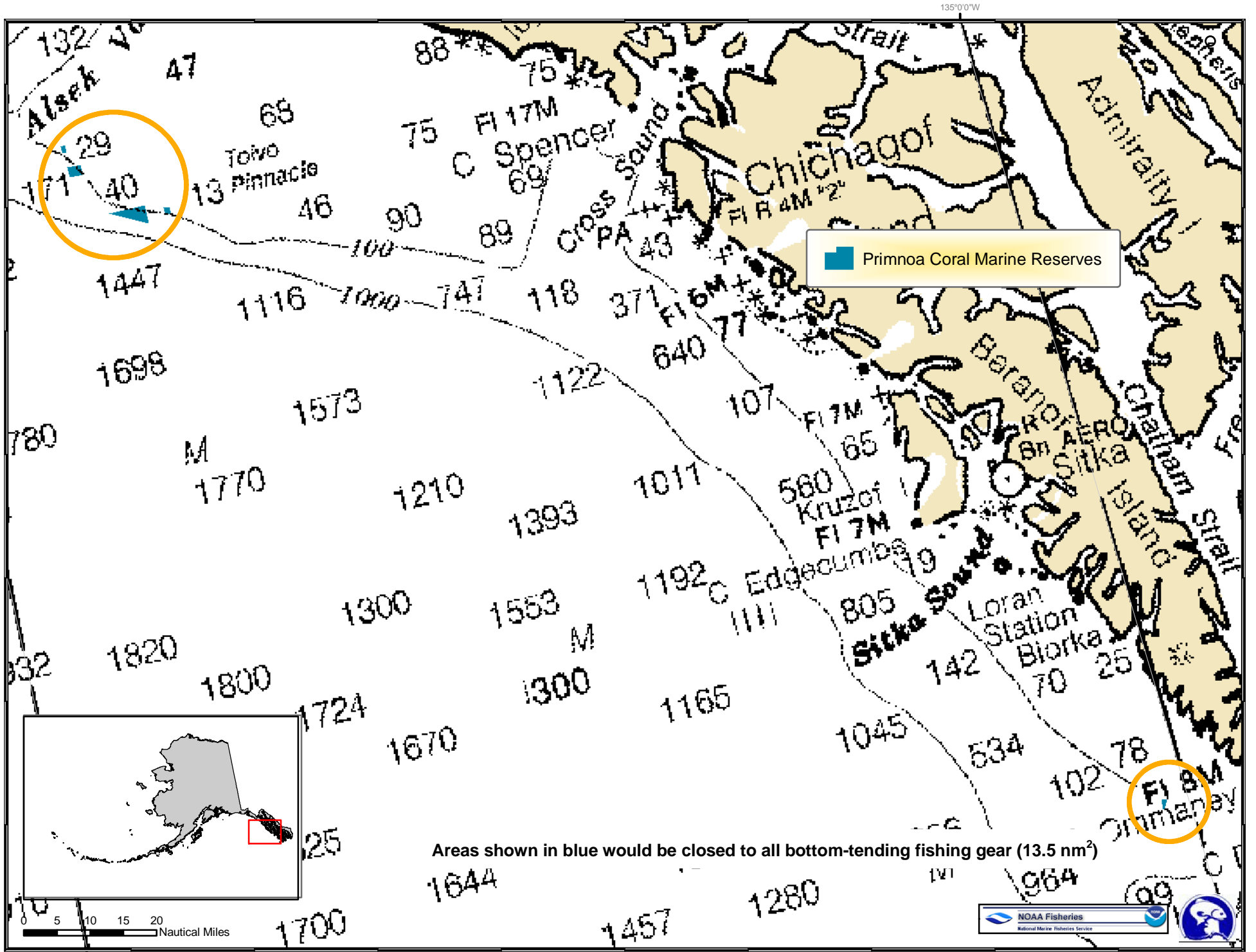


Areas shown in green would remain open to bottom trawling (12,423 nm²)

Areas shown in red would be closed to all bottom-tending fishing gear (110 nm²)

Areas shown in purple would be closed to mobile bottom-tending fishing gear (5,286 nm²)

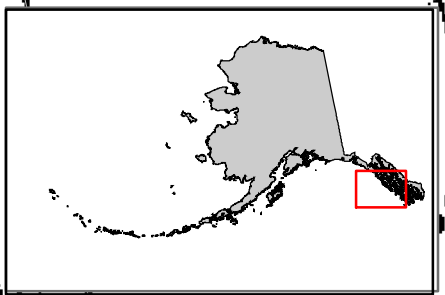




135°00'W

Primnoa Coral Marine Reserves

Areas shown in blue would be closed to all bottom-tending fishing gear (13.5 nm²)

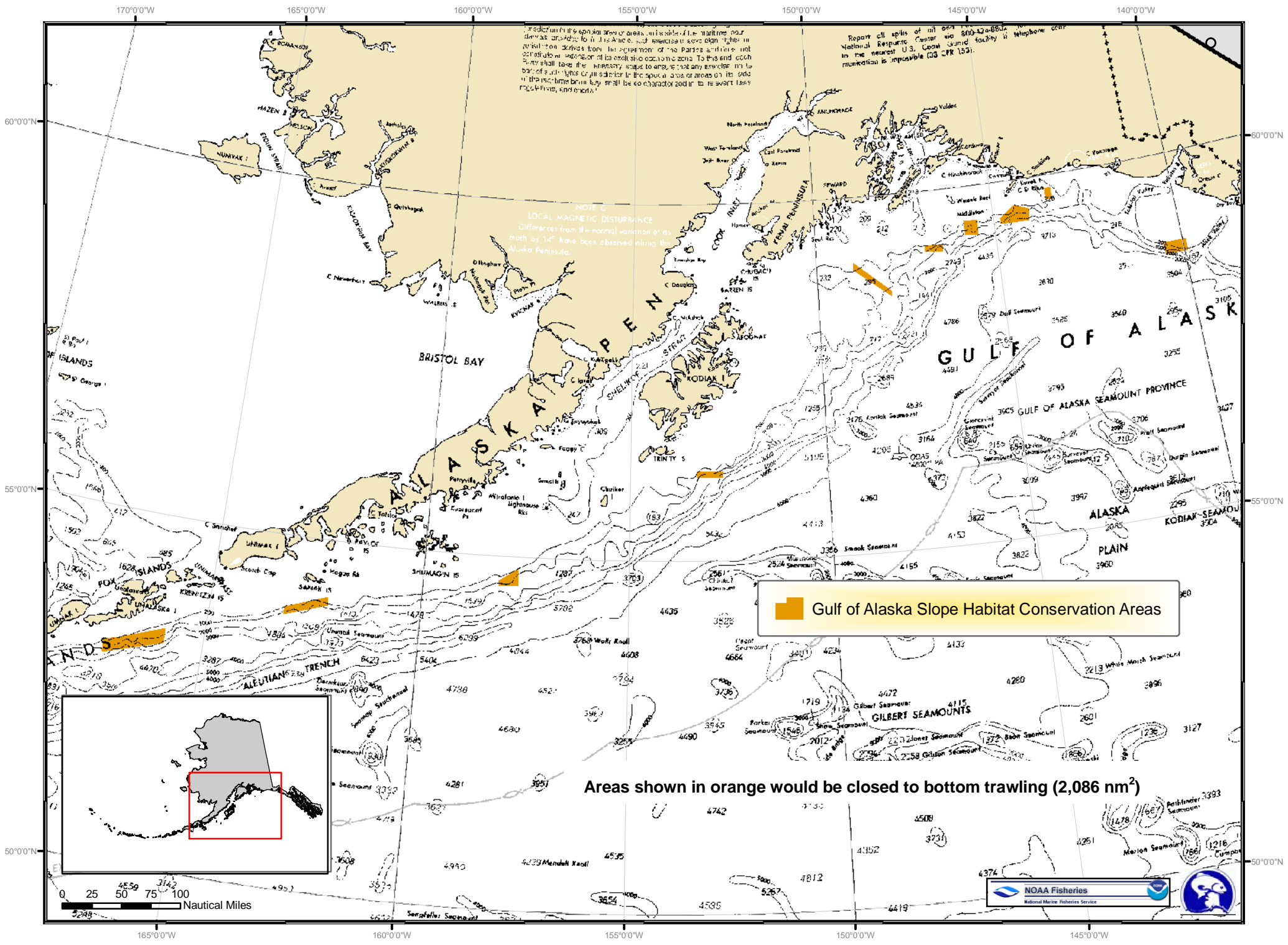


0 5 10 15 20 Nautical Miles



140°00'W

135°00'W



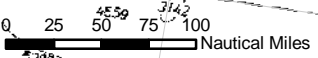
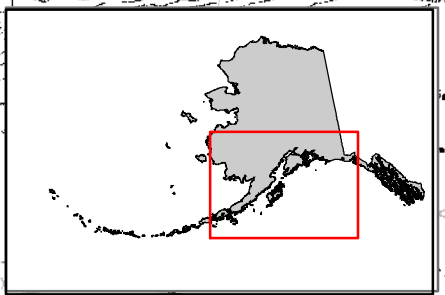
Trademarks, trade names, and other marks of the marine gear device brands to which Alaska and associated vessels rights in relation thereto derive from the agreement of the Parties and these rights are hereby acknowledged. The Parties and their agents shall take the necessary steps to ensure that any vessel, in the course of such visits or in connection with the activities or areas on the map of this time base may not be so characterized in its report laws, regulations, and marks.

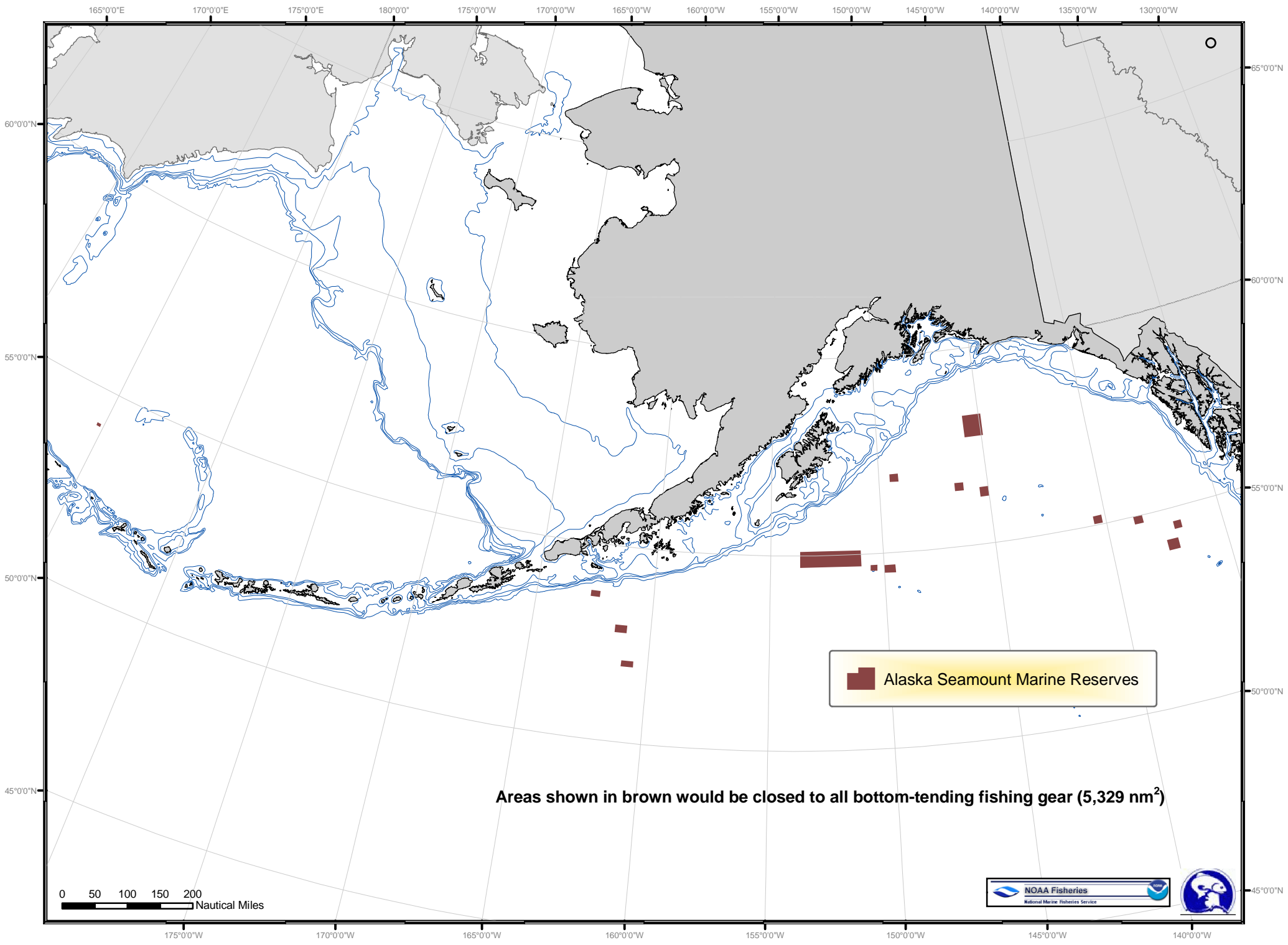
Report all spills of oil or other pollutants to the nearest U.S. Coast Guard facility or telephone center immediately in the event of a spill. Call 1-800-424-8822.


NOTE C
LOCAL MAGNETIC DISTURBANCE
 Differences from the normal variation of as much as 14° have been observed along the Alaska Peninsula.

 Gulf of Alaska Slope Habitat Conservation Areas

Areas shown in orange would be closed to bottom trawling (2,086 nm²)





 Alaska Seamount Marine Reserves

Areas shown in brown would be closed to all bottom-tending fishing gear (5,329 nm²)

0 50 100 150 200
Nautical Miles

