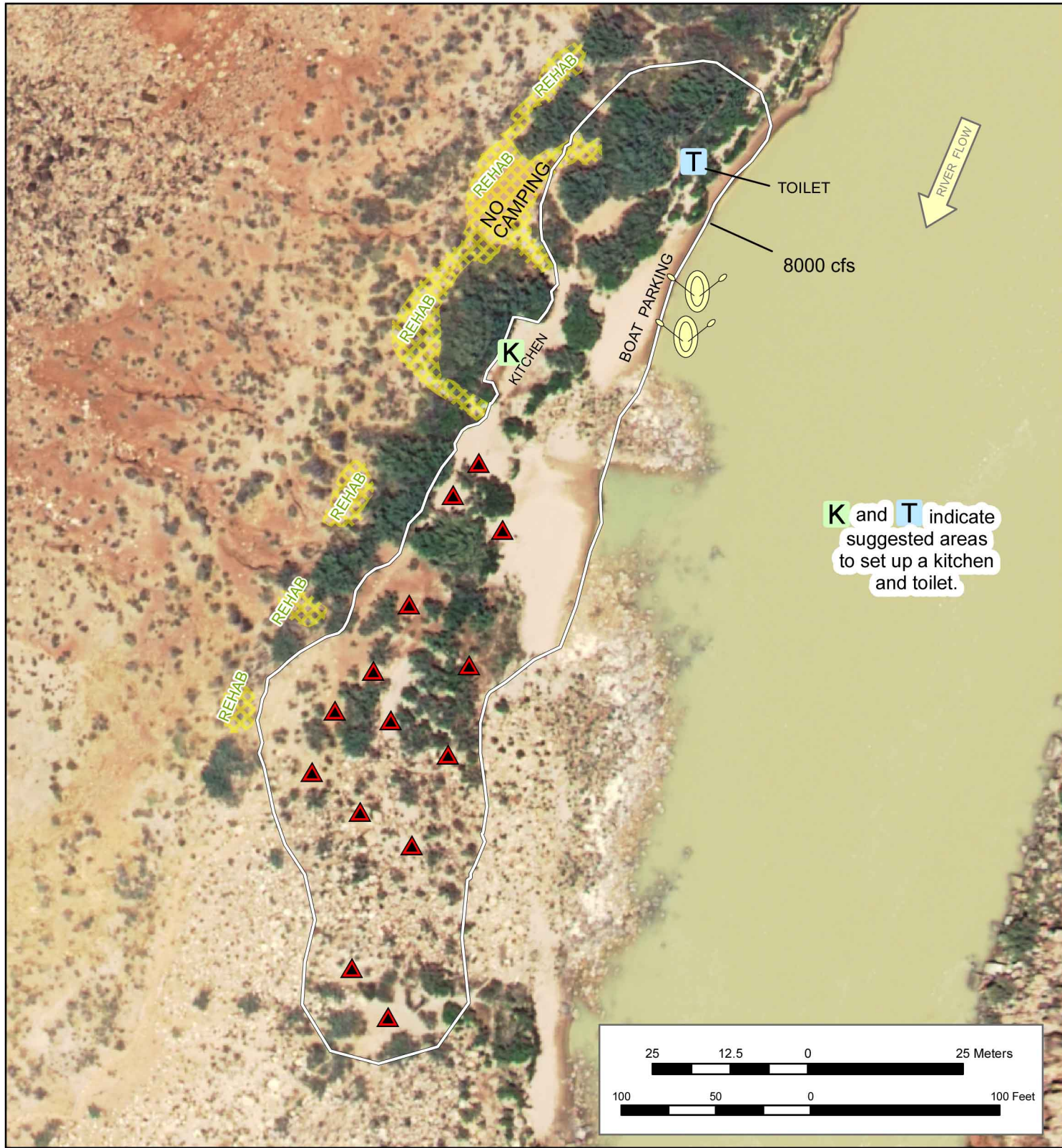




Soap Creek Camp

GCMRC RM 11.3 R



K and **T** indicate suggested areas to set up a kitchen and toilet.

LEAVE NO TRACE!
Camp on durable surfaces.
Protect Park resources!
Camp within campsite boundary.



- K** Kitchen
- T** Toilet
- ▲ Campsite
- Docking Area
- Closed for Rehab DO NOT ENTER
- Boundary