A dark green background with a faint, light green radar grid pattern. The grid consists of concentric circles and radial lines, typical of a weather radar display.

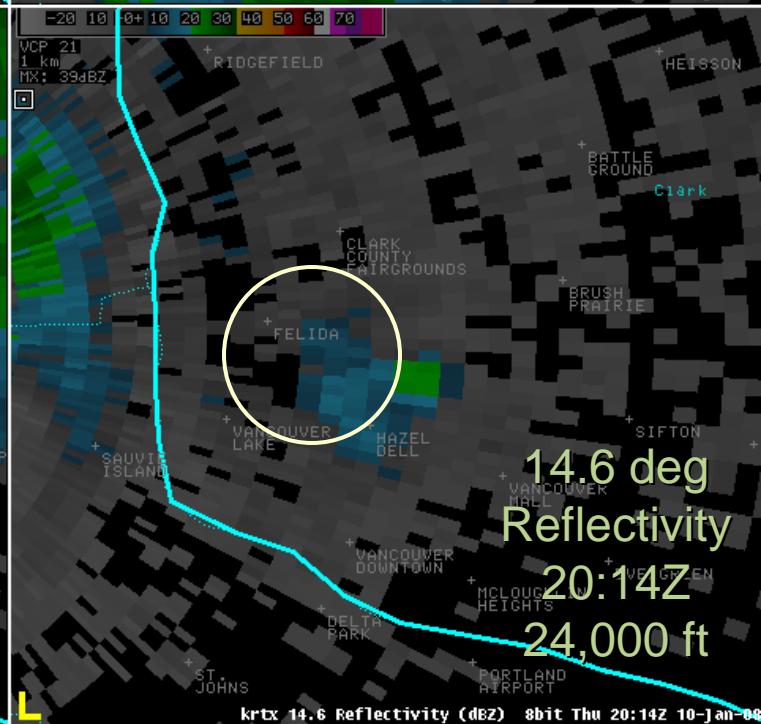
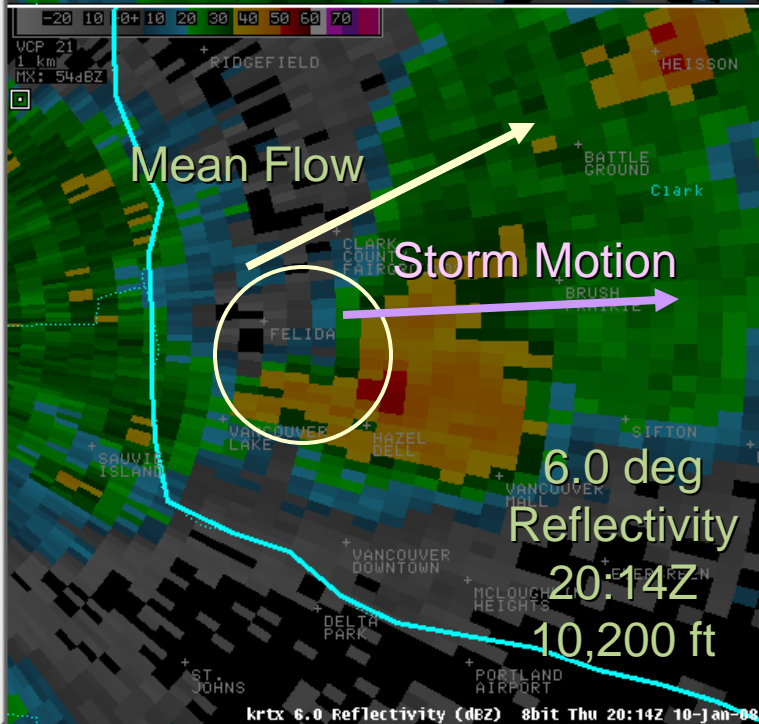
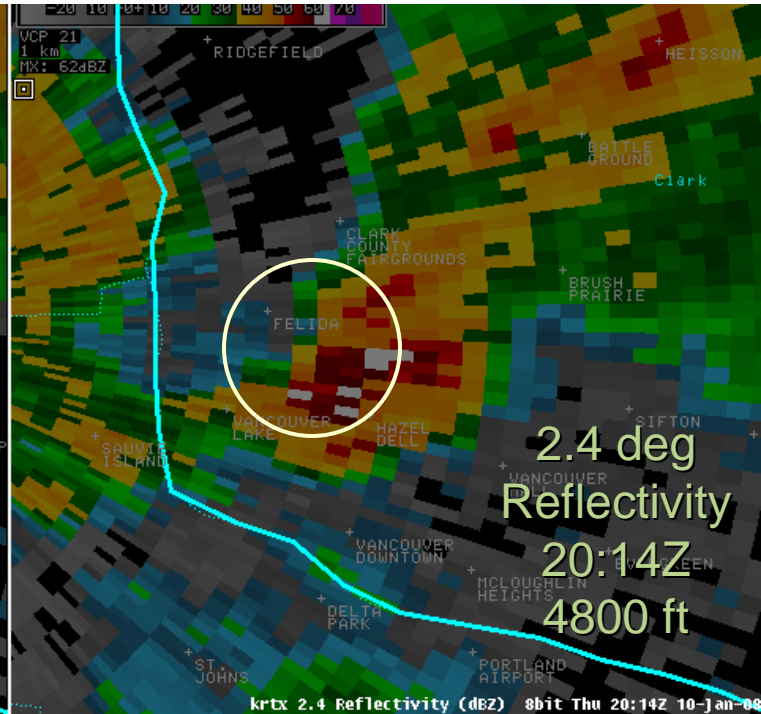
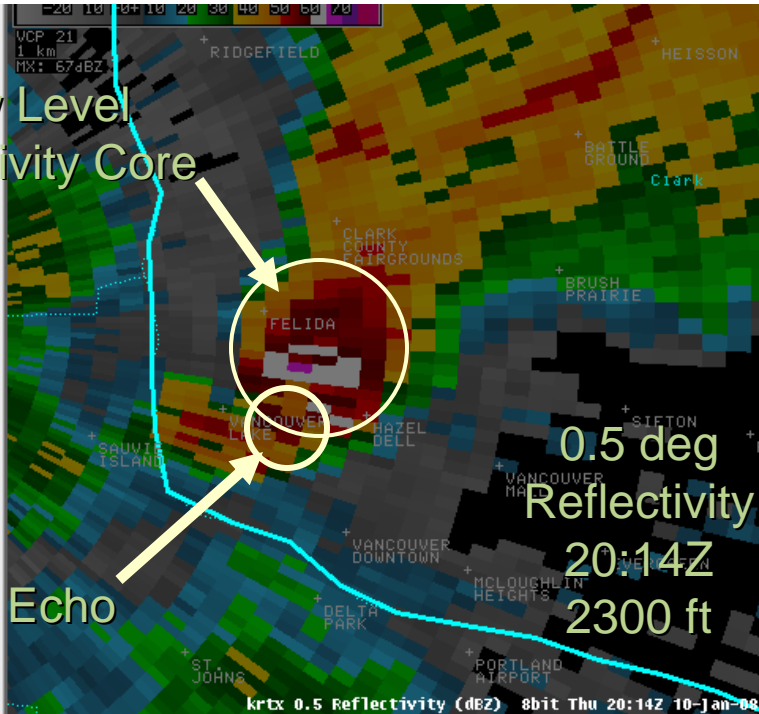
Radar Observations of the 10 January 2008 Vancouver WA Mini-Supercell and Tornado

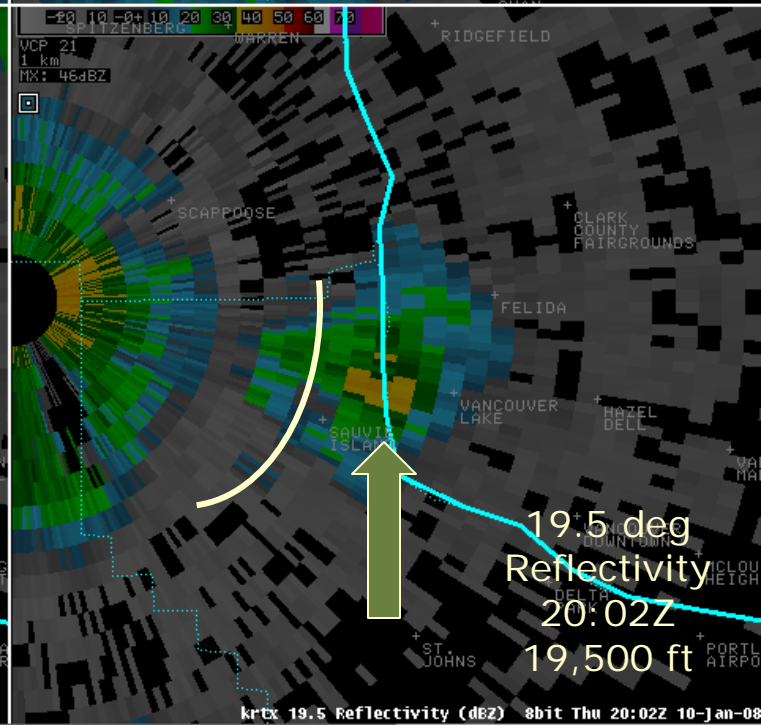
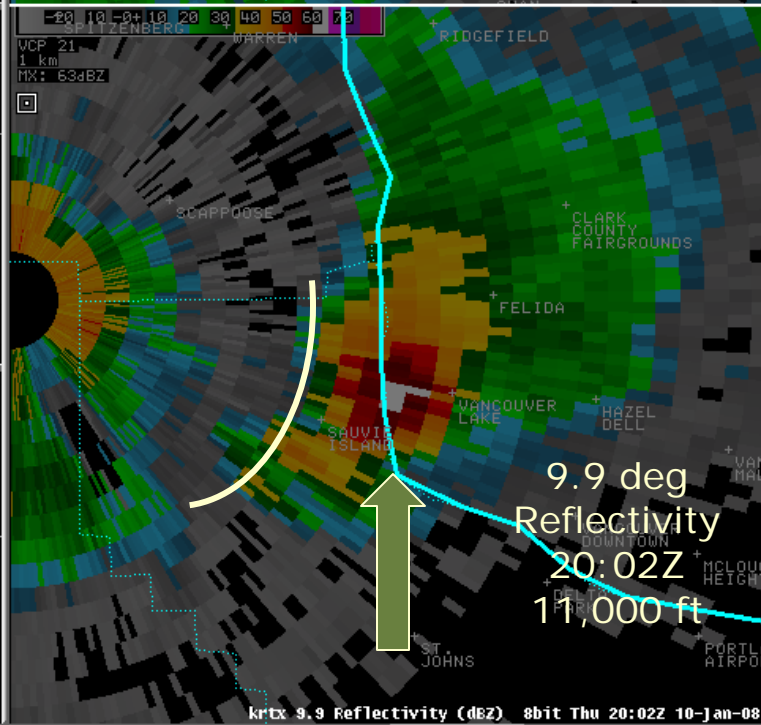
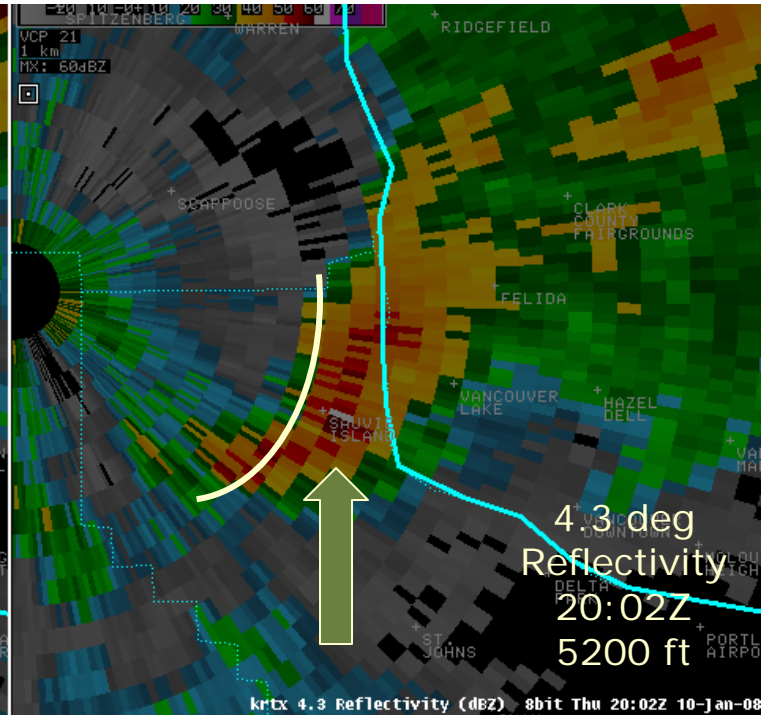
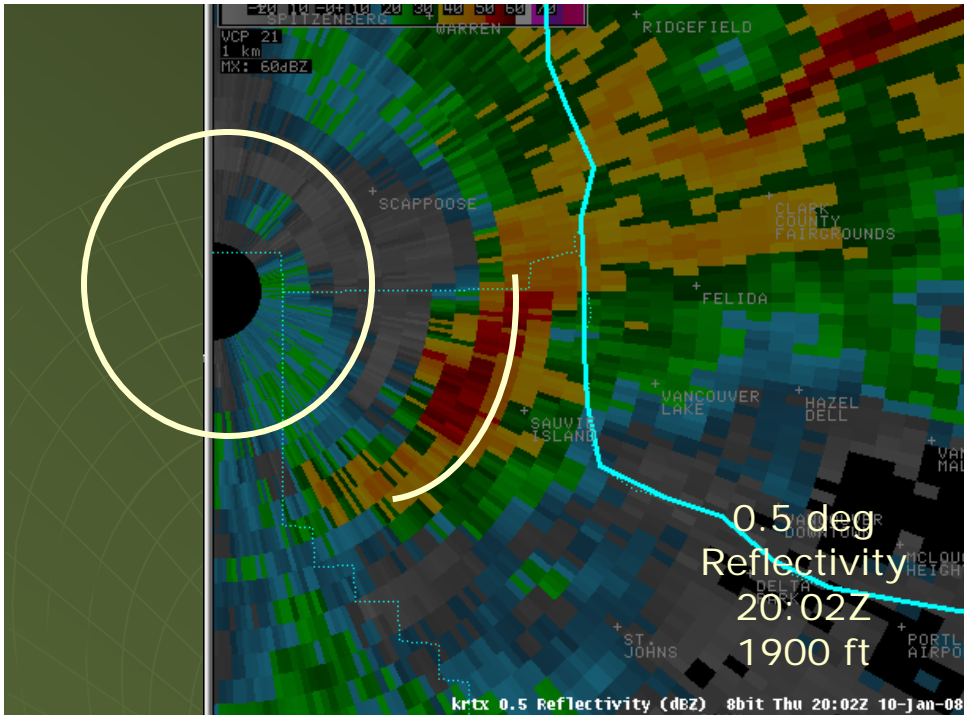
William R. Schneider, Paul Tolleson,
David Elson, Kirsten Elson, Julia Ruthford,
Charles Dalton, Jonathan Wolfe

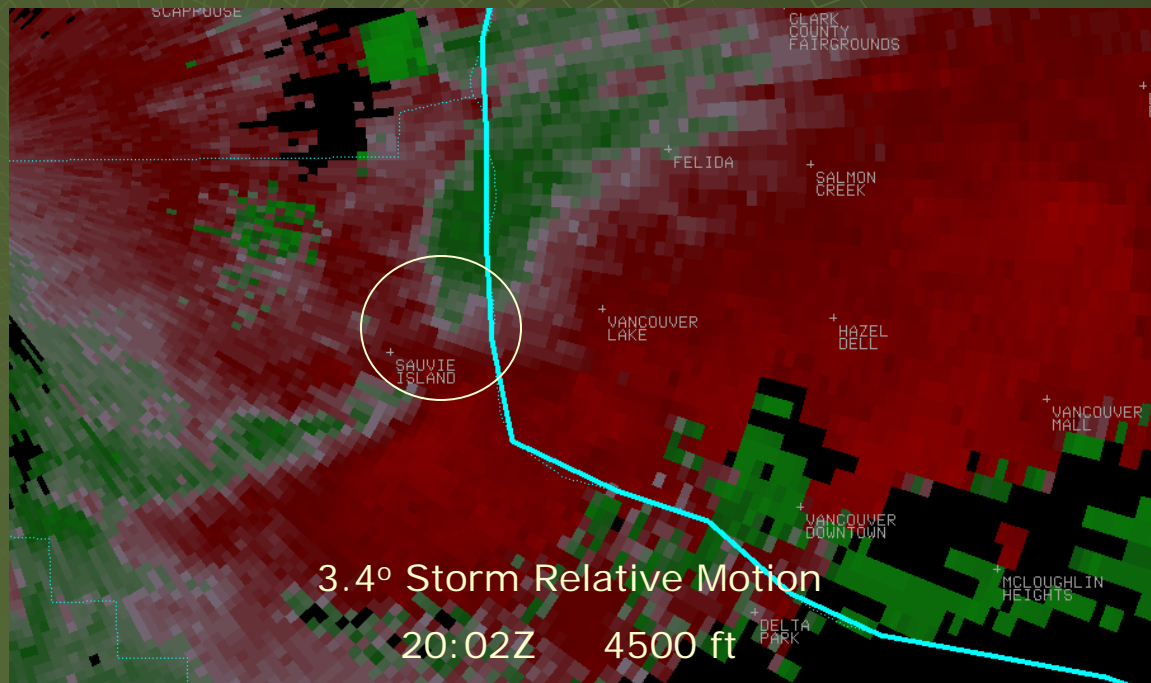
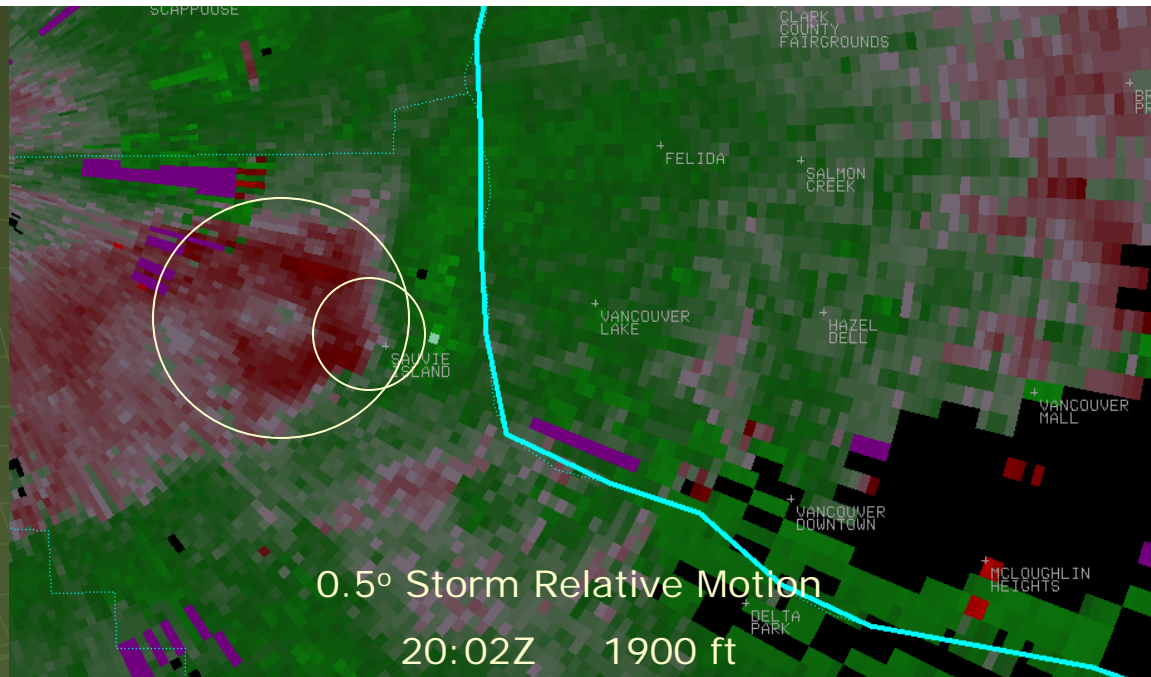
*National Weather Service Forecast Office
Portland OR*

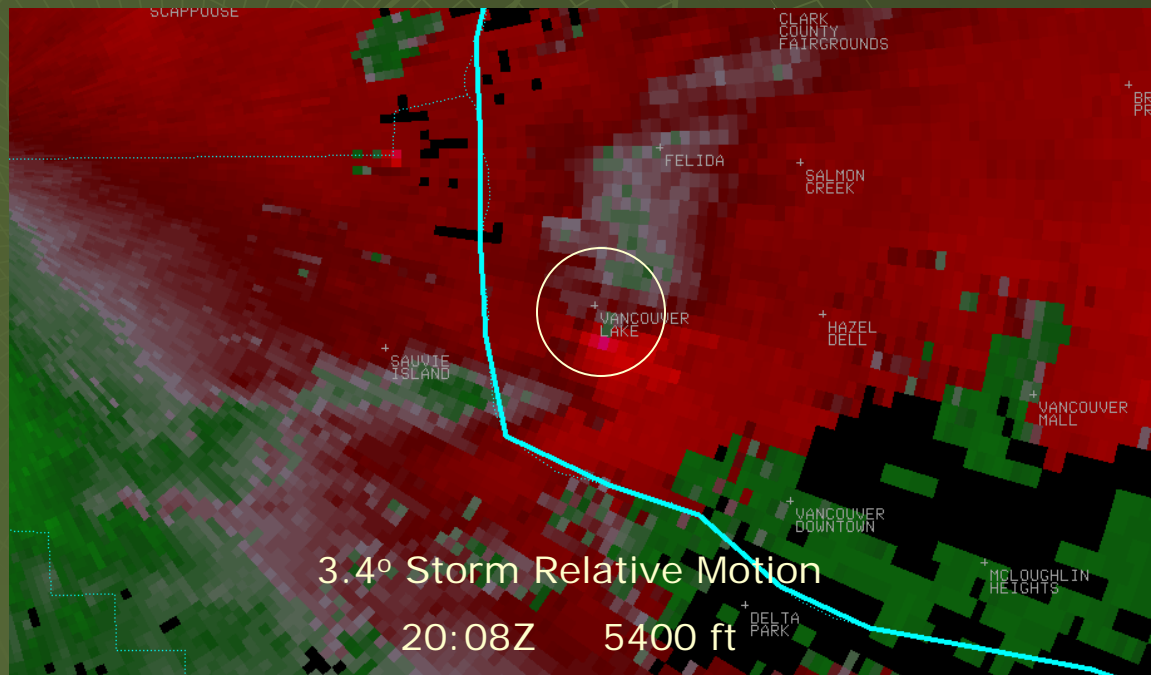
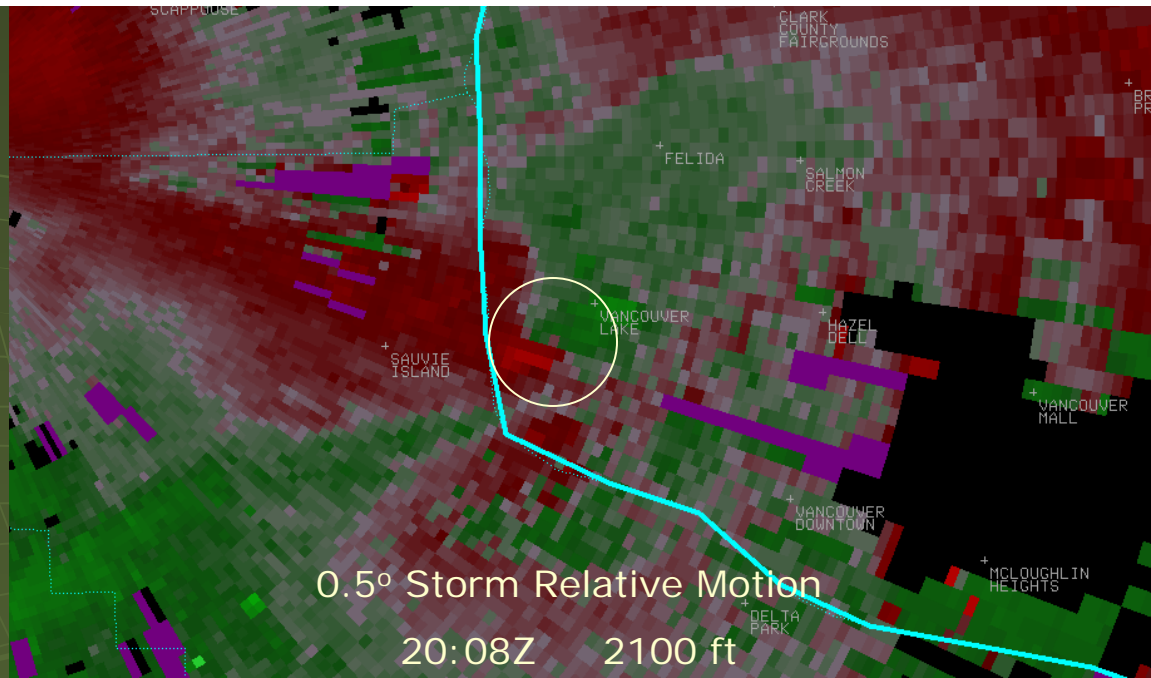
Low Level
Reflectivity Core

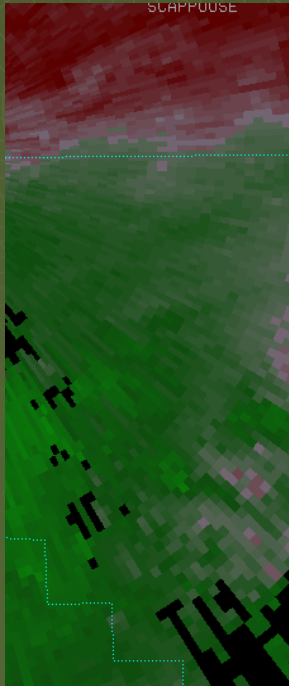
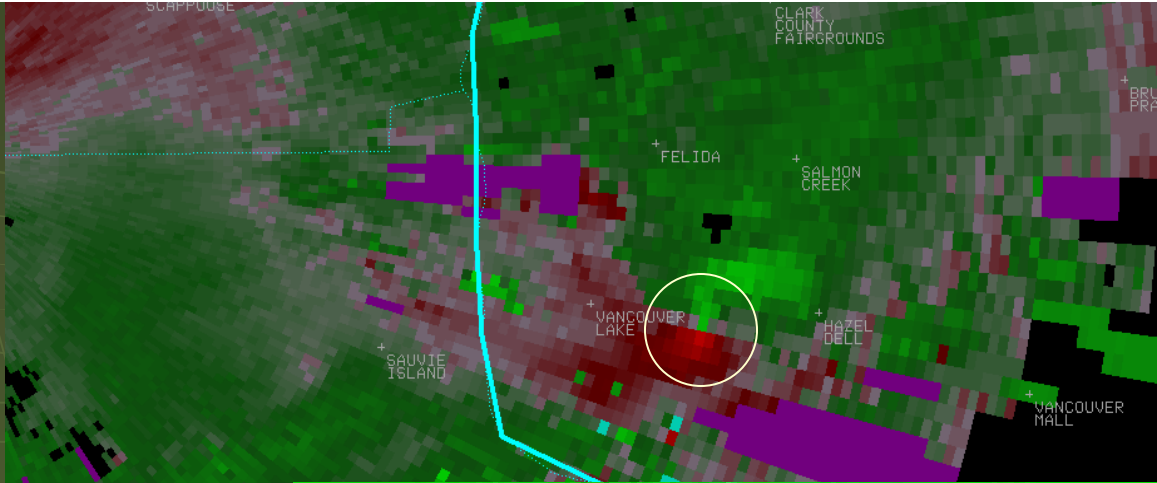
Hook Echo



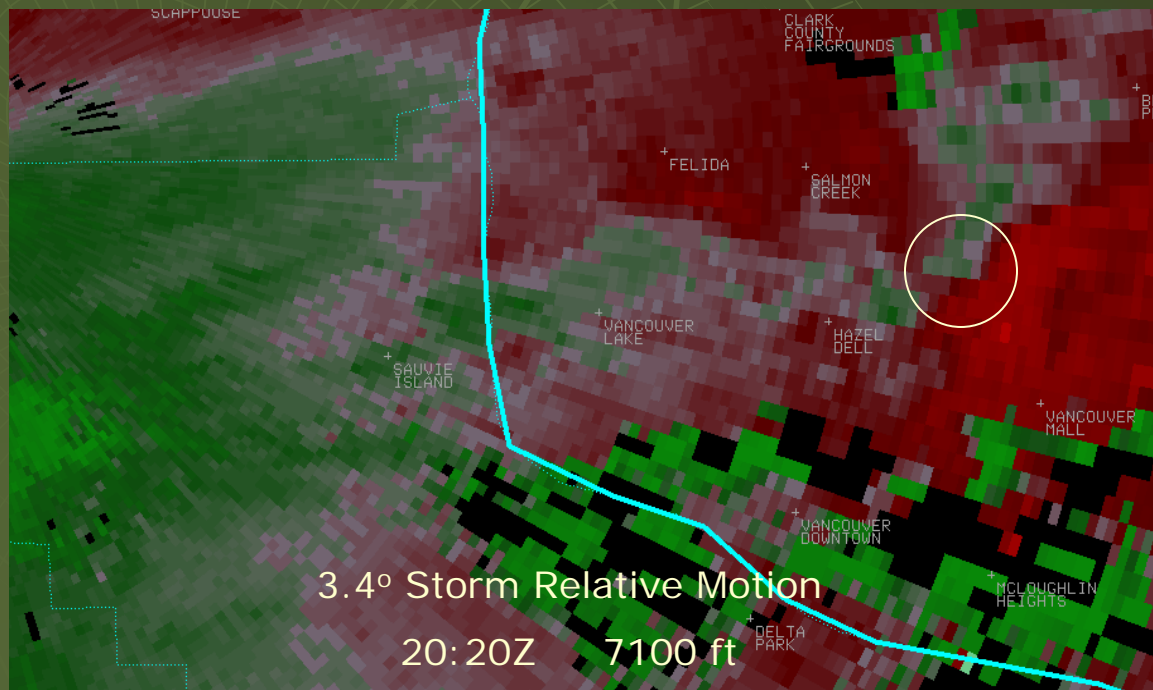
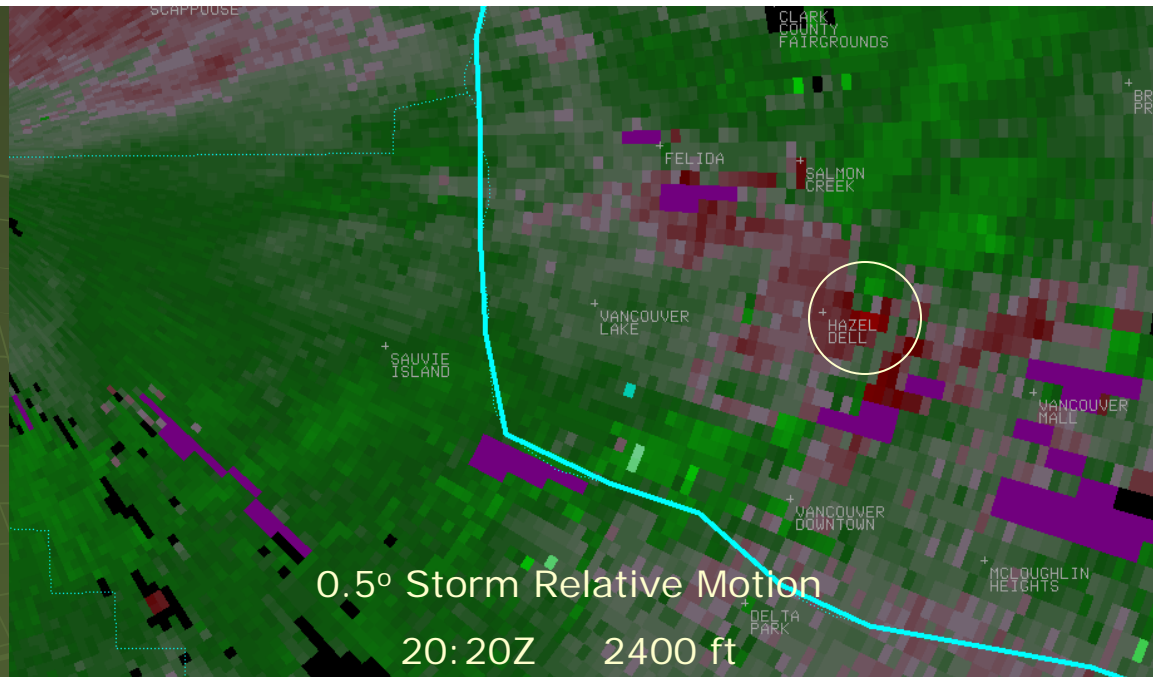


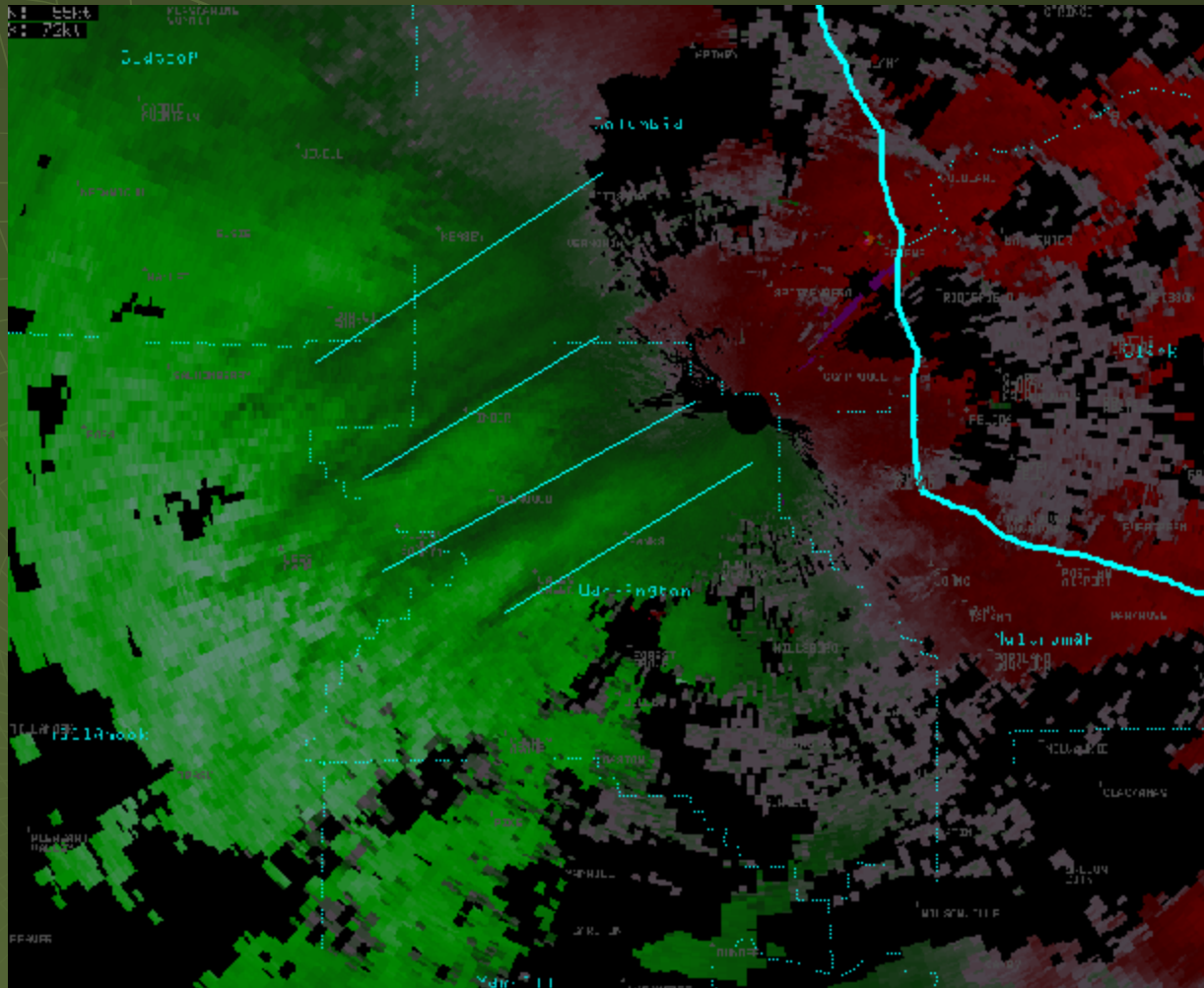




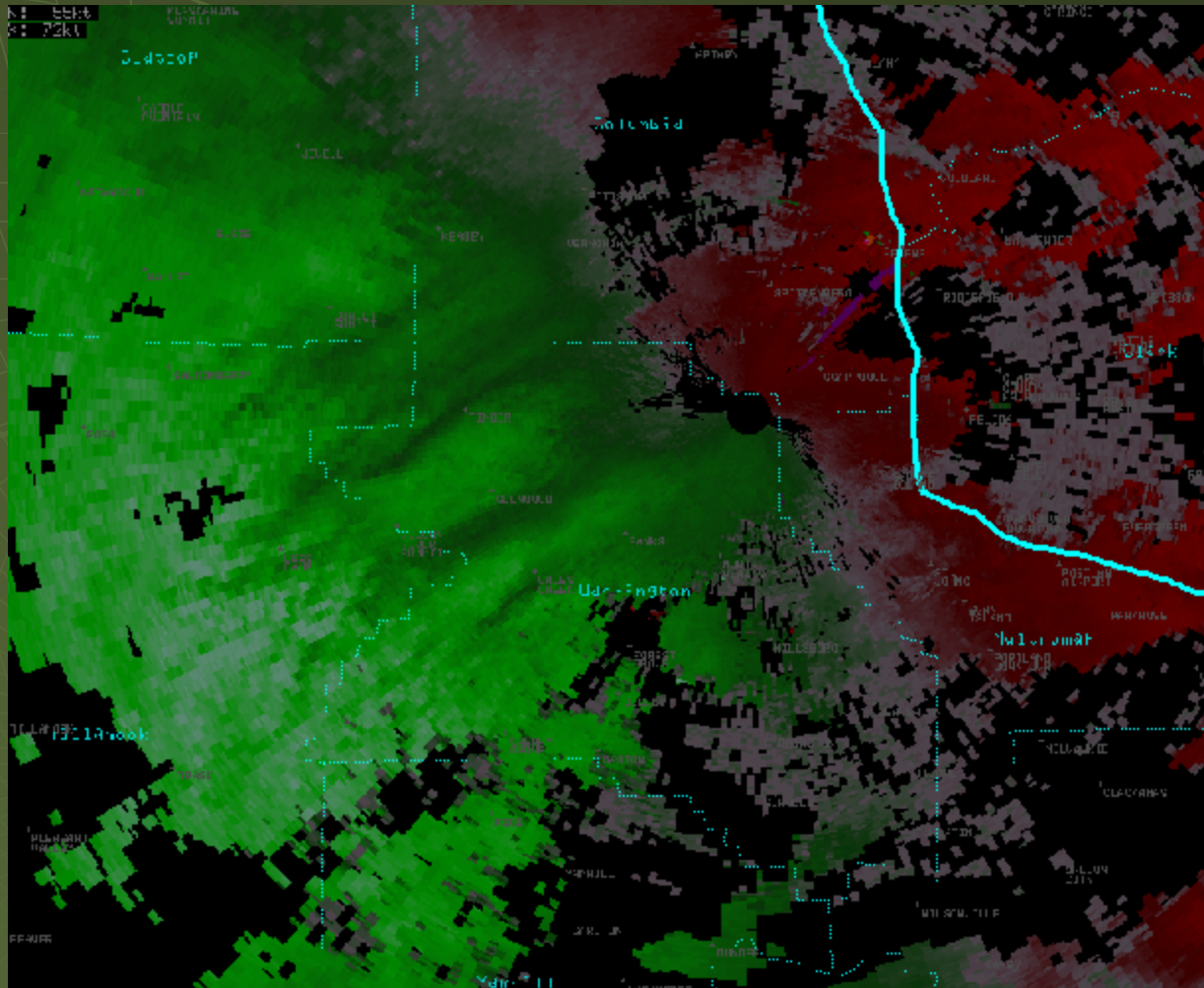


3.4° Storm Relative Motion
20:14Z 6200 ft

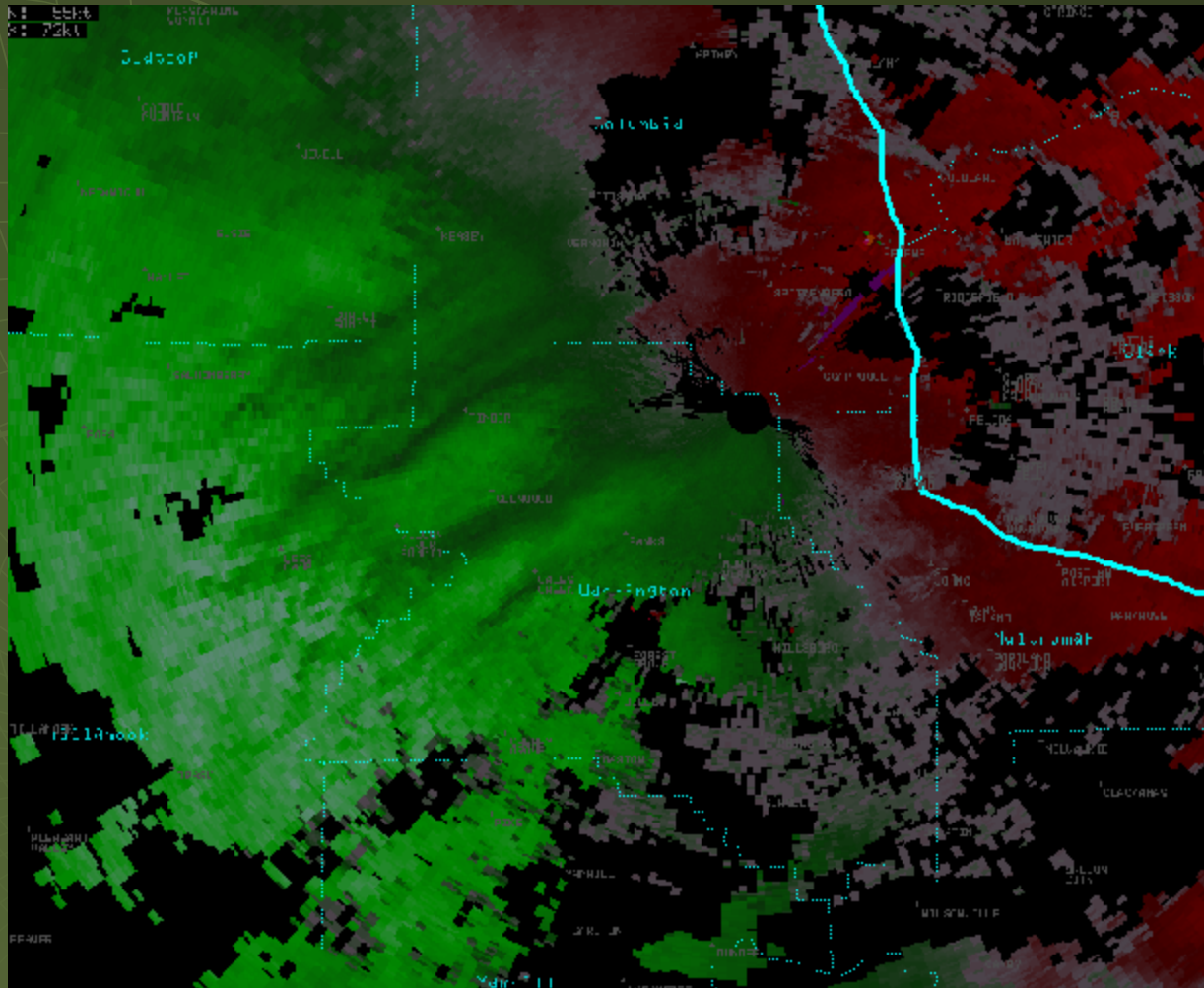




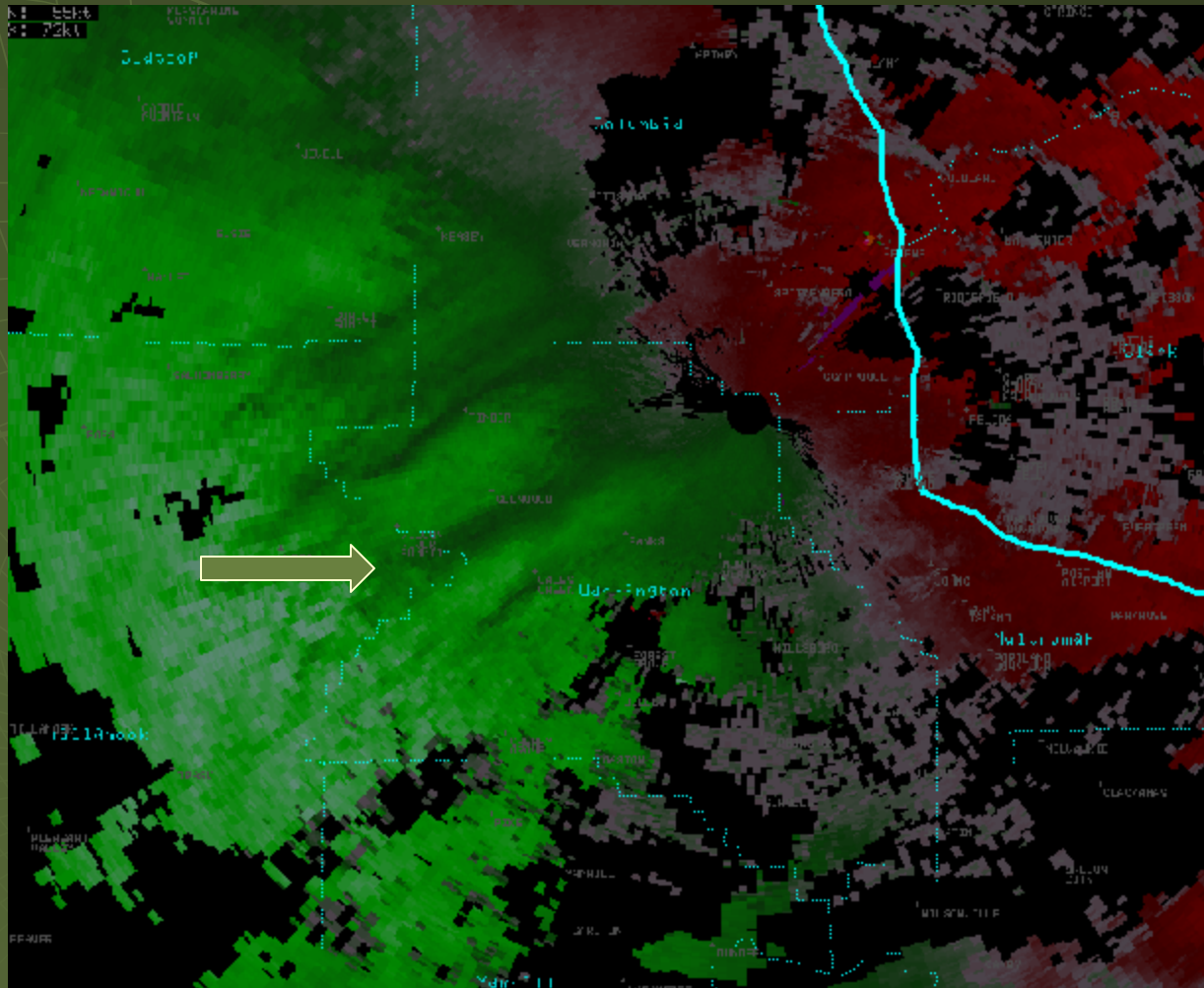
1.5° Velocity 18:59Z – 20:02Z



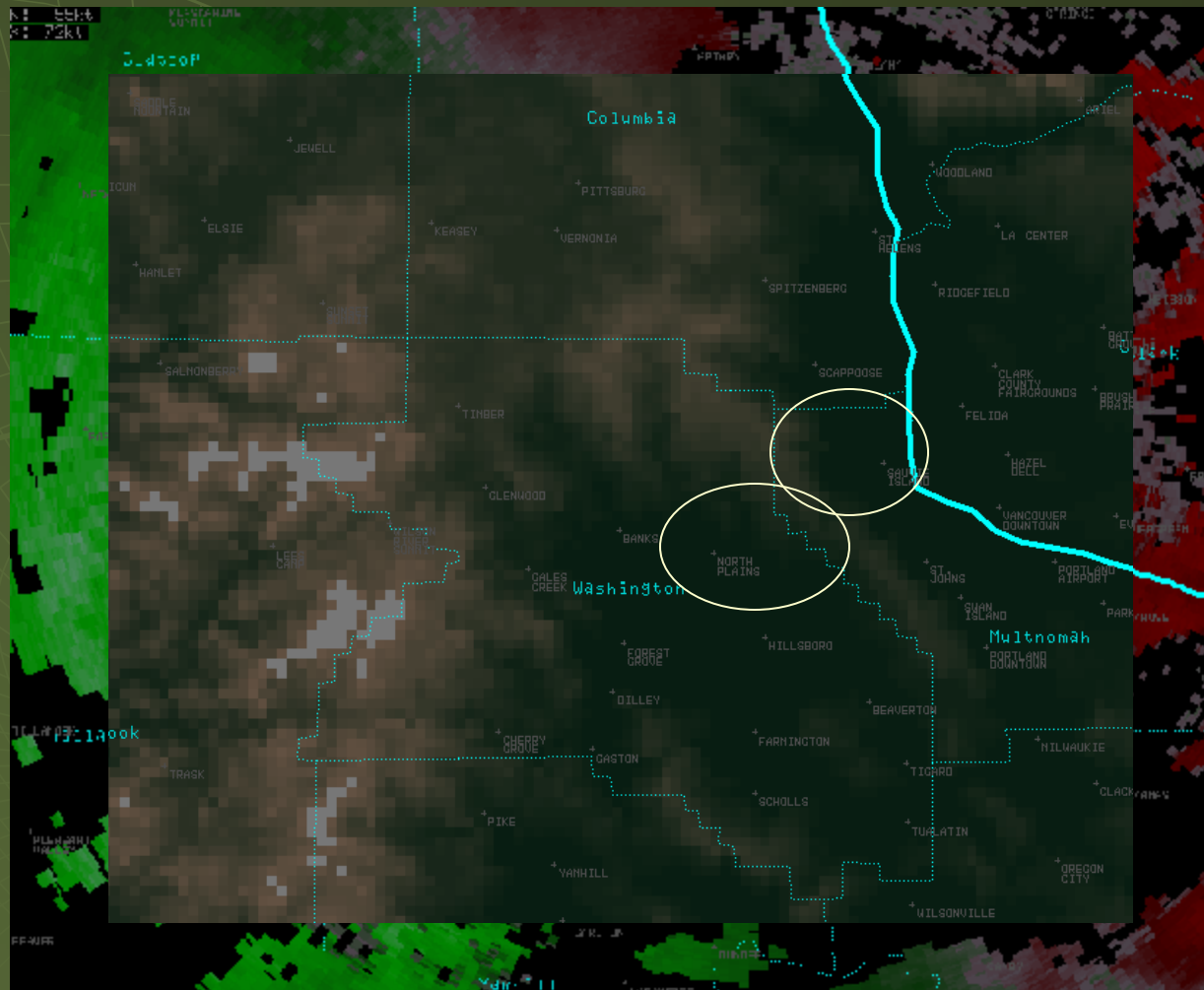
1.5° Velocity 18:59Z – 20:02Z



1.5° Velocity 18:59Z – 20:02Z

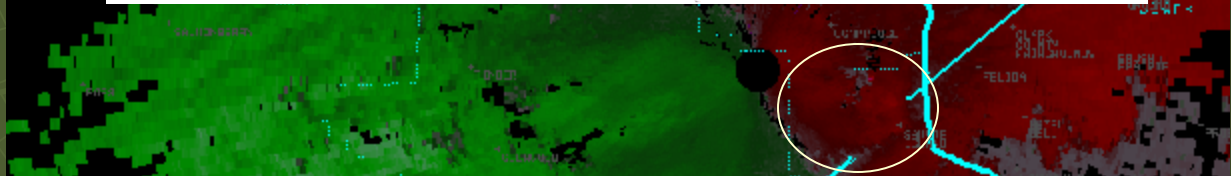
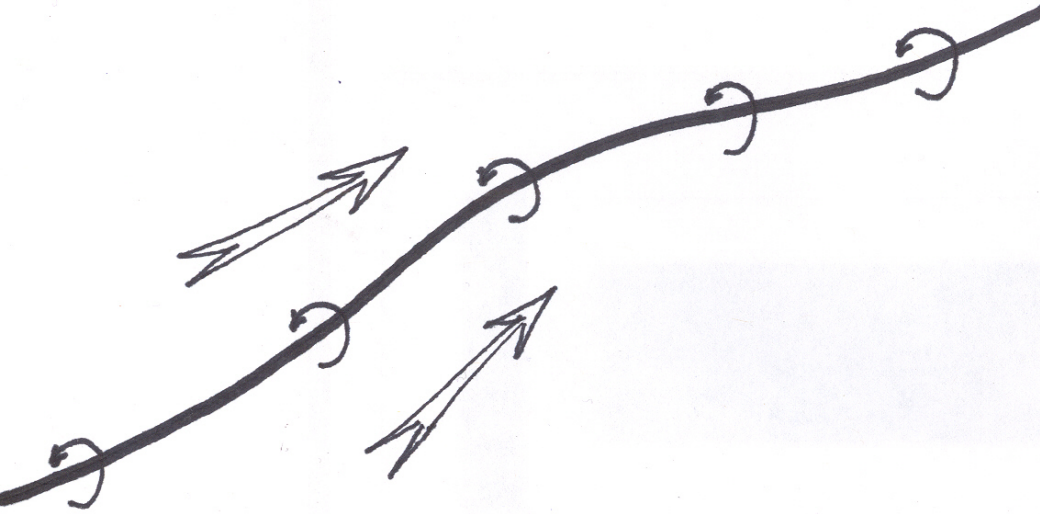


1.5° Velocity 18:59Z – 20:02Z



1.5° Velocity 18:59Z – 20:02Z

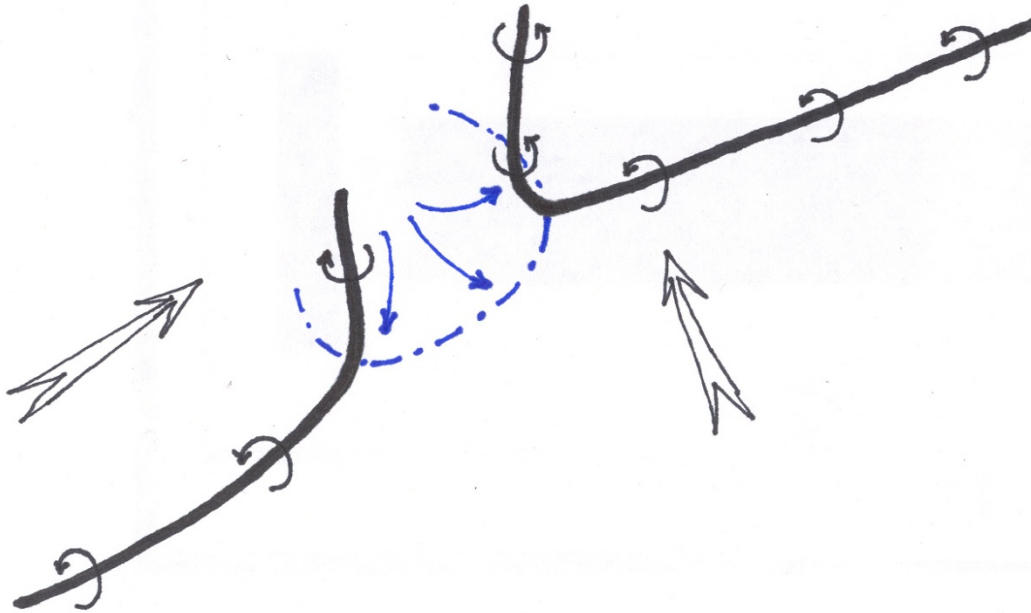
N: 5114
X: 03k1

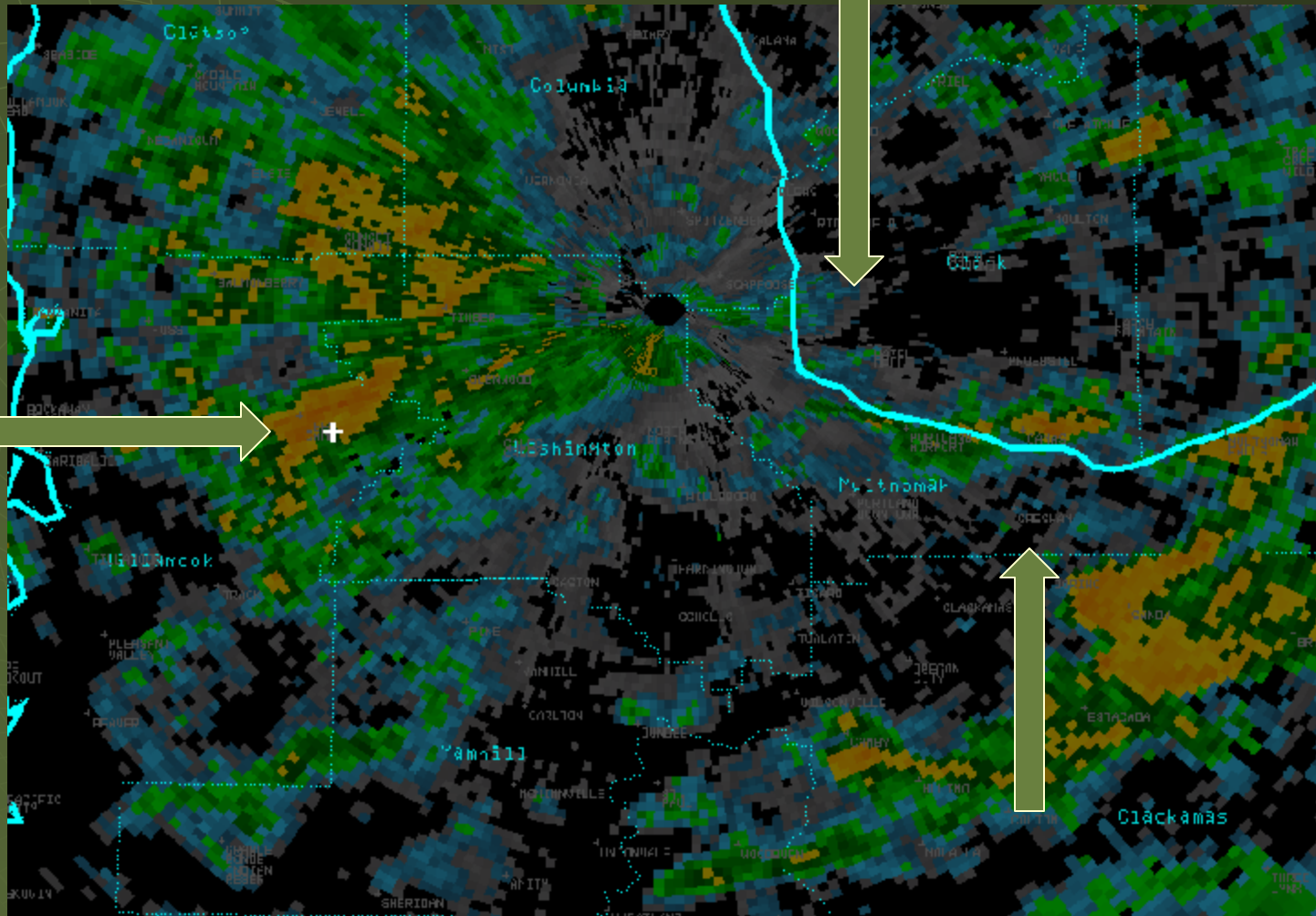


115113

115113

115113





0.5° Reflectivity 19:04Z – 21:47Z