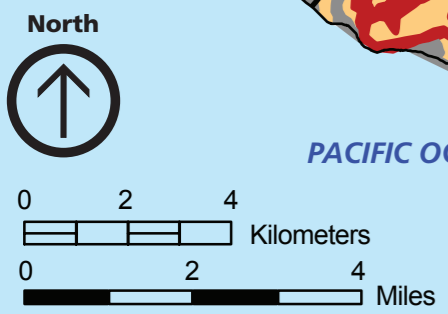
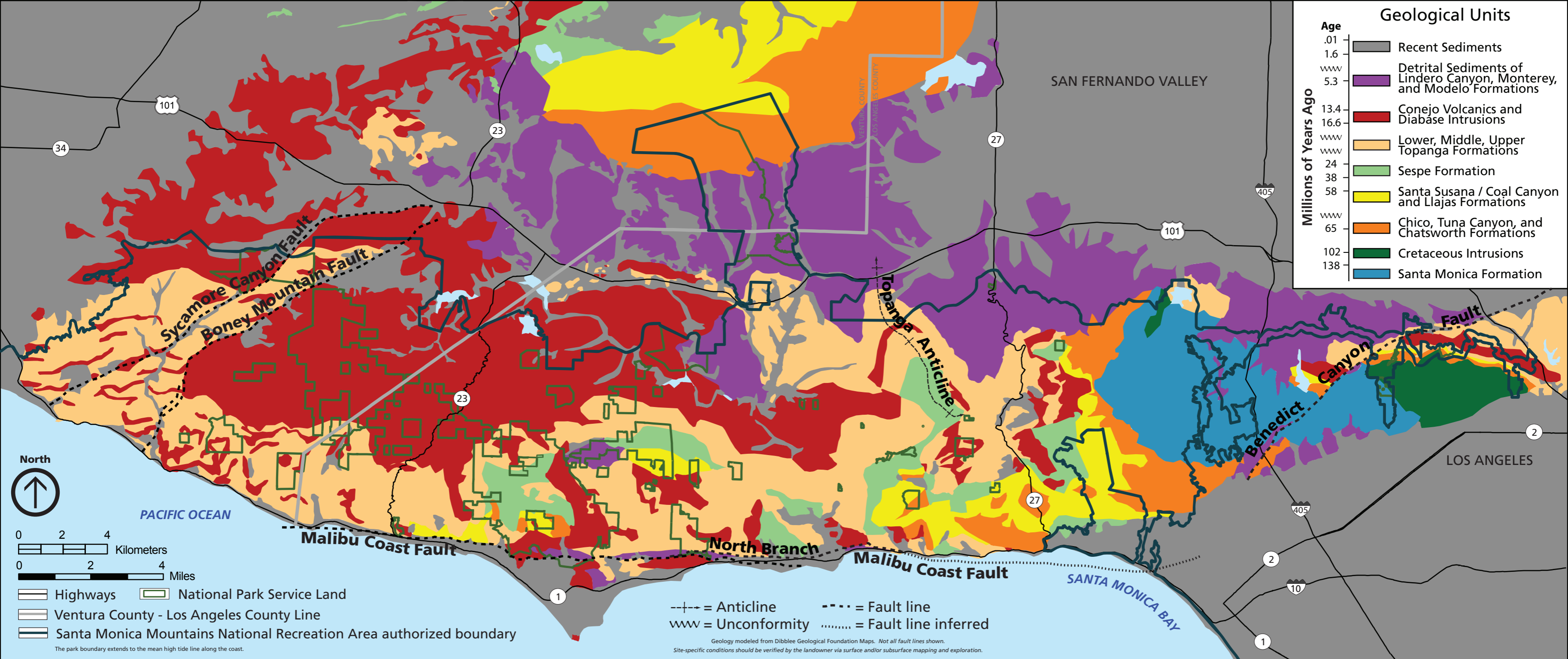
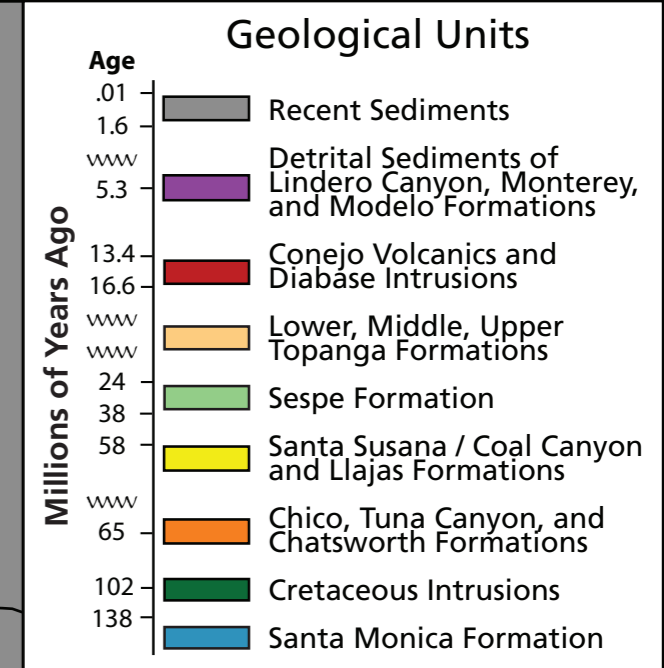


# Geology of the Santa Monica Mountains

Santa Monica Mountains  
National Recreation Area  
November 2007

National Park Service  
U.S. Department of the Interior



- Highways
  - National Park Service Land
  - Ventura County - Los Angeles County Line
  - Santa Monica Mountains National Recreation Area authorized boundary
- The park boundary extends to the mean high tide line along the coast.

- = Anticline
  - = Fault line
  - = Unconformity
  - = Fault line inferred
- Geology modeled from Dibblee Geological Foundation Maps. Not all fault lines shown.  
Site-specific conditions should be verified by the landowner via surface and/or subsurface mapping and exploration.